



KIRRIBILLI VILLAGE CENTRE MASTERPLAN

12 FEBRUARY 2021

turf

tpp
transport planning

Intrax

CONTEXT

Kirribilli is a **UNIQUE** harbourside suburb.

How can we make Kirribilli a **DESTINATION** and not just a by-route/ carpark for people commuting to the city or visiting nearby attractions.

So, what makes Kirribilli?





MARKETS



OLYMPIC POOL



ADMIRALTY HOUSE



COMMUNITY EVENTS



YACHT SQUADRON



PLATYPUS

THE CULTURE OF KIRRIBILLI





VISUAL JOURNEY





ISSUES OPPORTUNITIES

Lack of a centre

Utilisation of Burton St underpass as public space and heart

Fragmented pedestrian connections

Adjust Burton St/Ennis Rd intersection to improve connections across Broughton Rd

Connectivity between foreshore and main street

Improved pedestrian experience along Broughton street

Poor arrival experience from station

Redesign Ennis Road at station entry to improve amenity

Car and pedestrian conflicts on Burton and Bligh St

Pedestrianise Burton St and improve pedestrian priority on Bligh St

Markets not extending into Kirribilli

Extend markets into Kirribilli

Poor footpath amenity

Widen footpaths and provide more seating

Lack of shade trees

Additional tree planting throughout

Outdated furniture and lighting

New furniture and lightpoles throughout

Lack of art and events

Lighting to activate key spaces and lighting to stimulate night economy

Inconsistency of paving

Continue upgrades to paving throughout

KEY AREAS

1. Milsons Point Station Arrival

2. Burton Street Underpass

3. Burton St Green Heart

4. Broughton High St

5. Bligh St Community Heart

6. Fitzroy St



KIRRIBILLI'S URBAN DOMAIN + LANDSCAPE INVESTIGATION

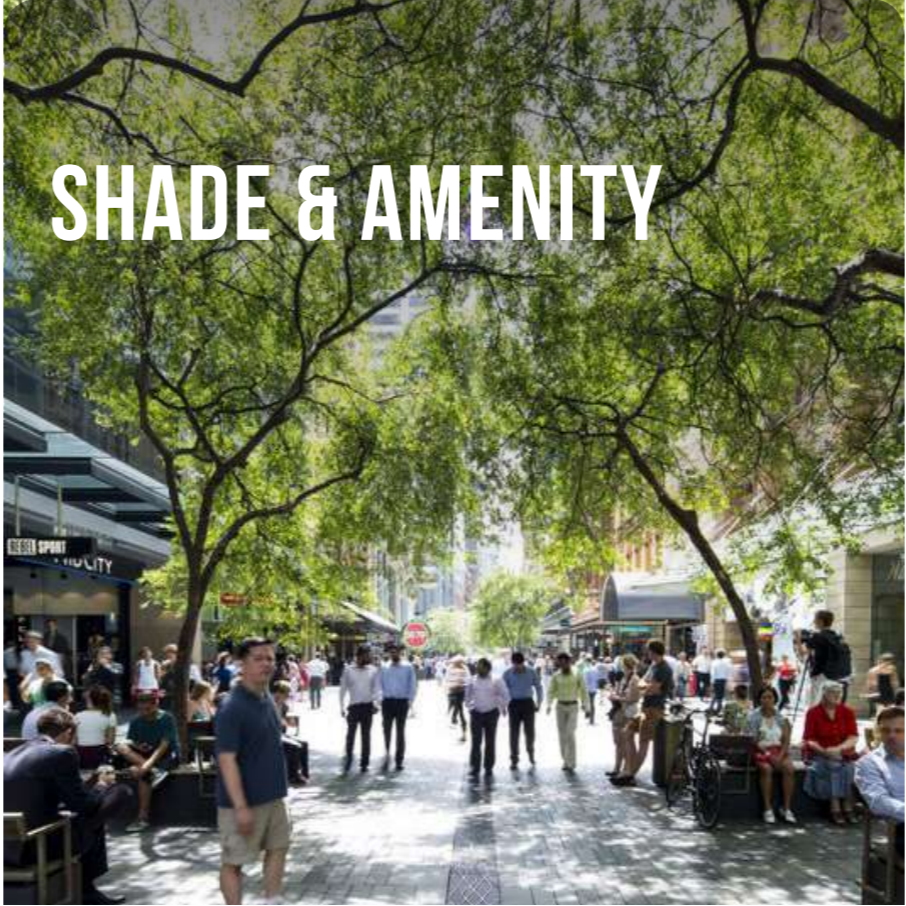
the

**MILSONS POINT
STATION ARRIVAL**

WHAT MAKES A GOOD ARRIVAL?



SEASONAL CHANGE



SHADE & AMENITY

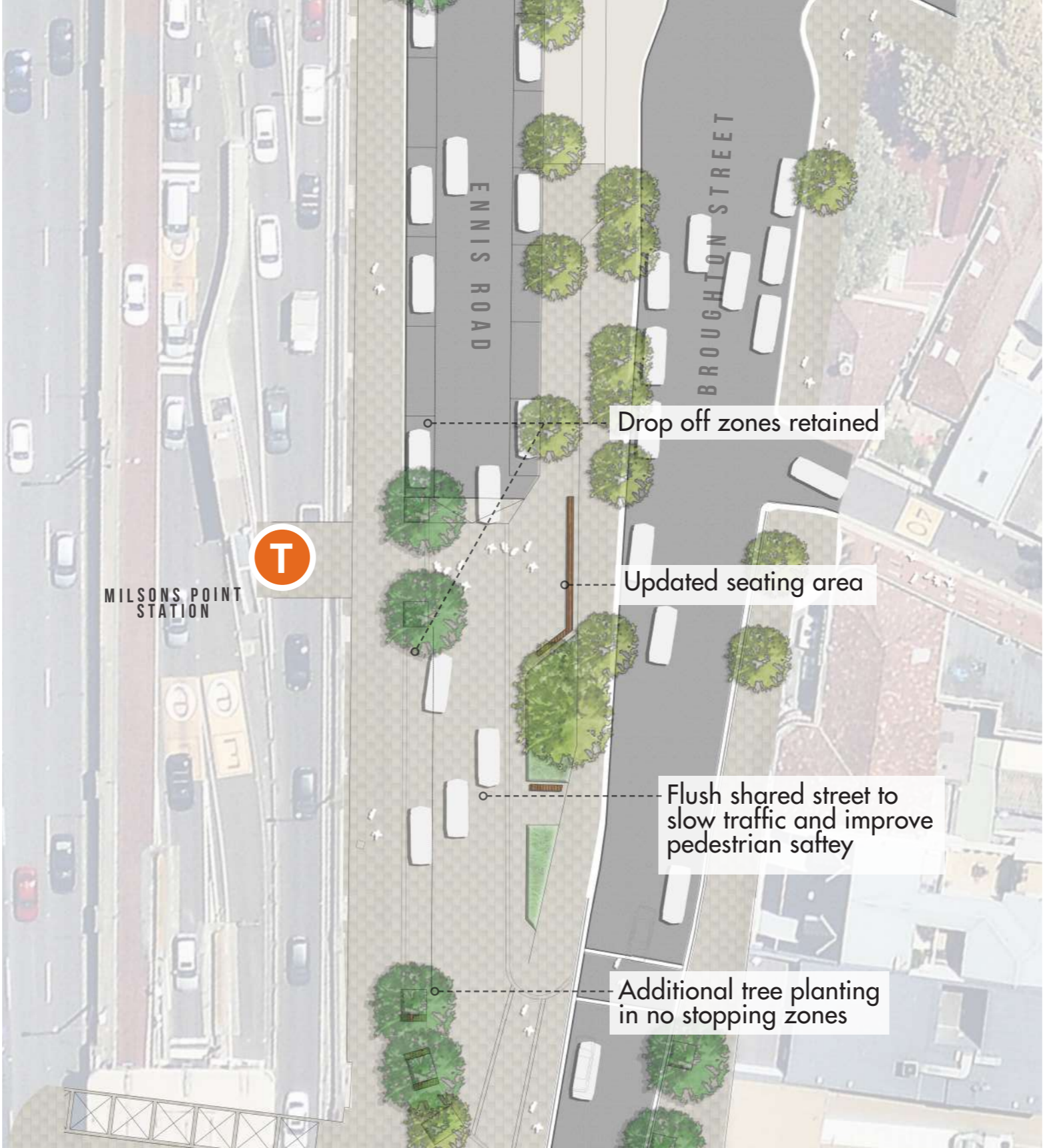


ACTIVATION



MILSON POINT STATION ARRIVAL

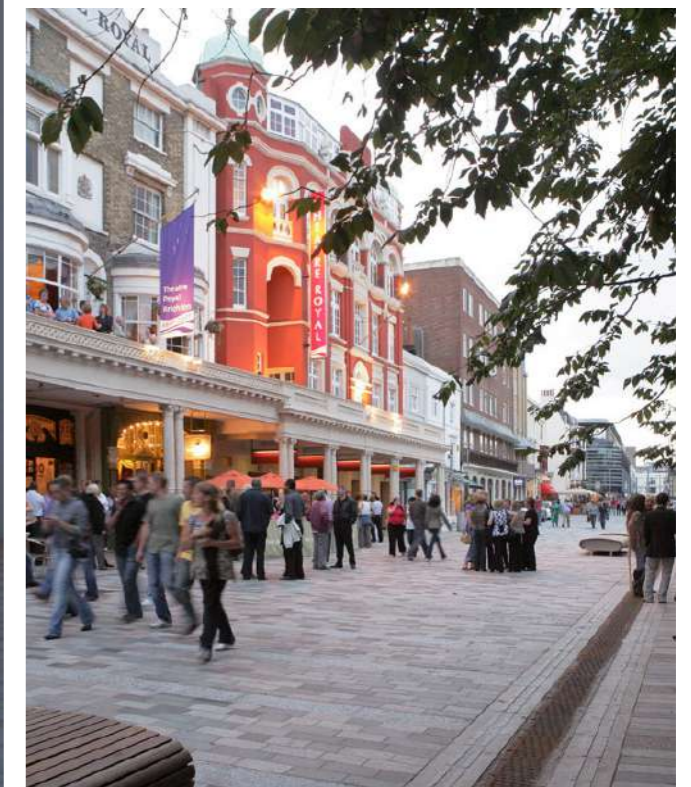
EXISTING CONDITION





MILSONS POINT STATION →

OPPORTUNITIES

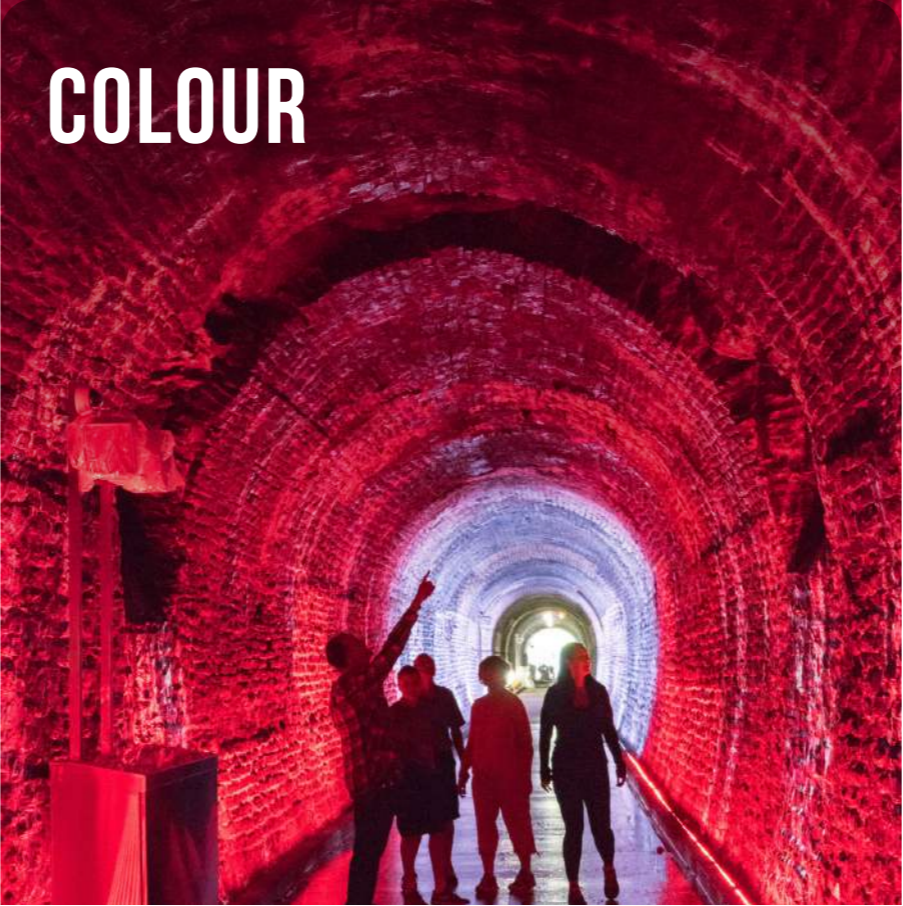


KIRRIBILLI'S URBAN DOMAIN + LANDSCAPE INVESTIGATION

the

BURTON STREET UNDERPASS

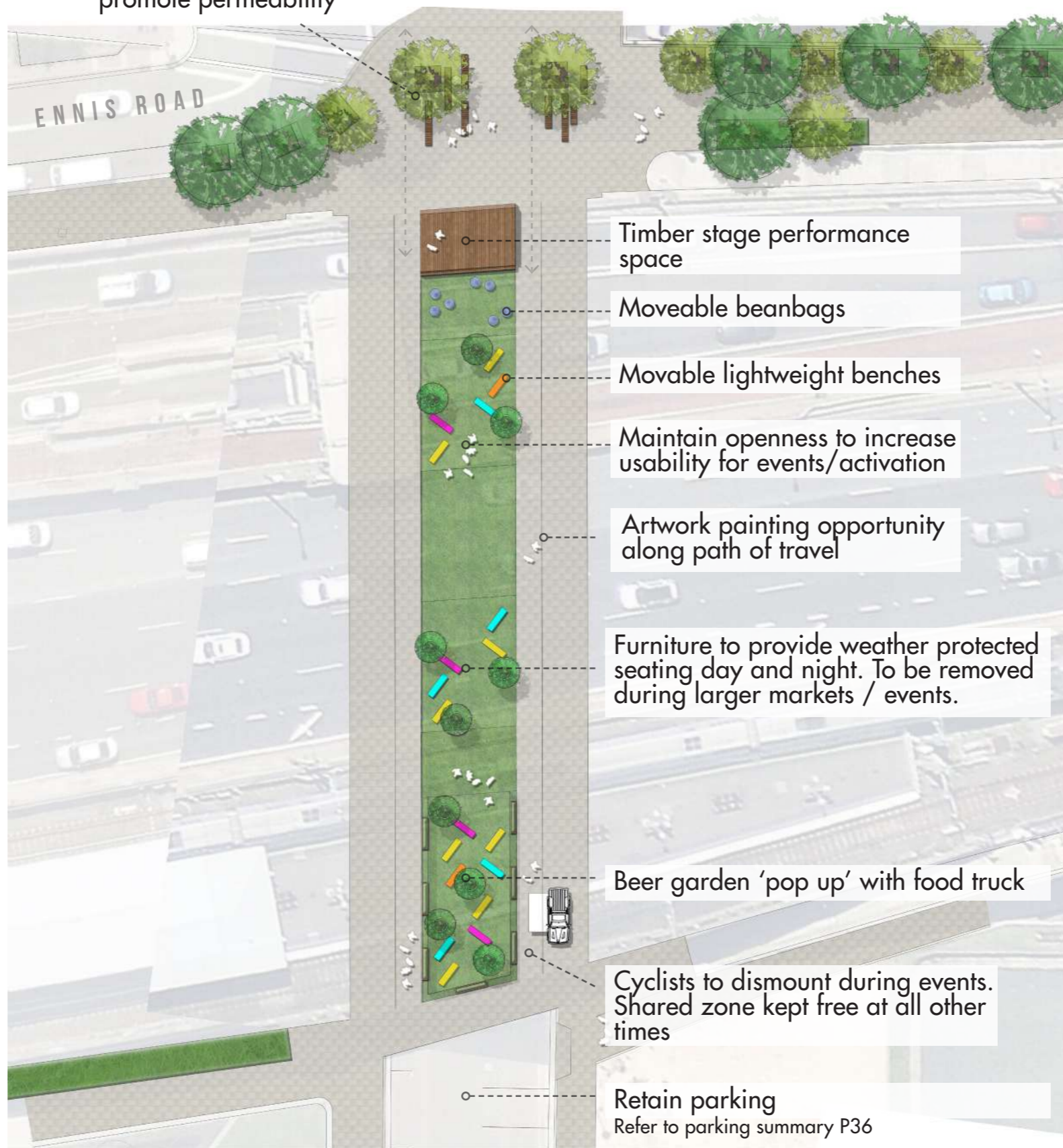
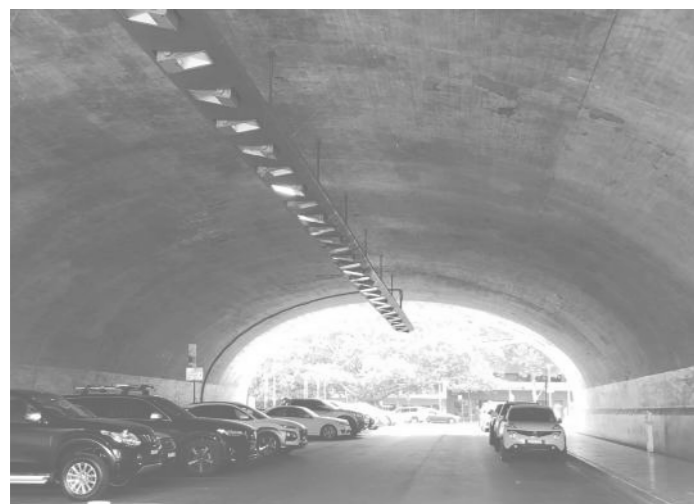
WHAT MAKES A GREAT UNDERPASS?



THE BURTON STREET UNDERPASS

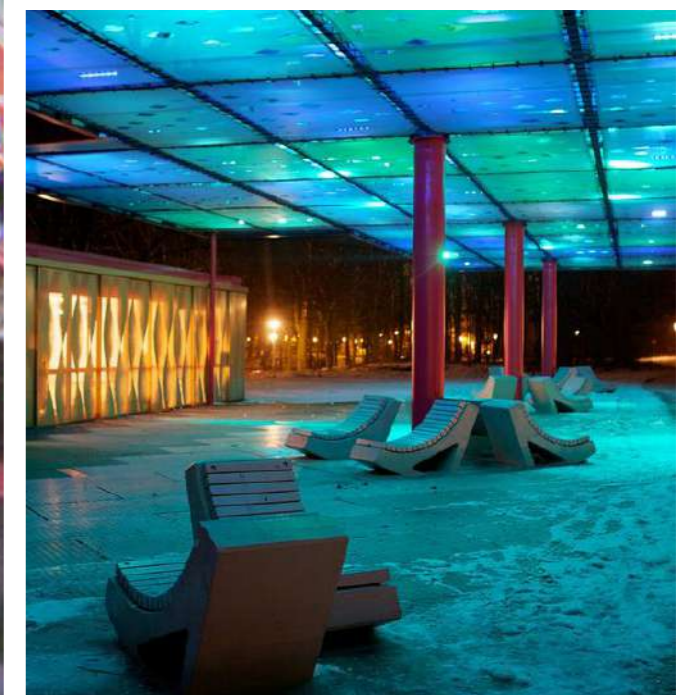
Redesign plaza to promote permeability

EXISTING CONDITION





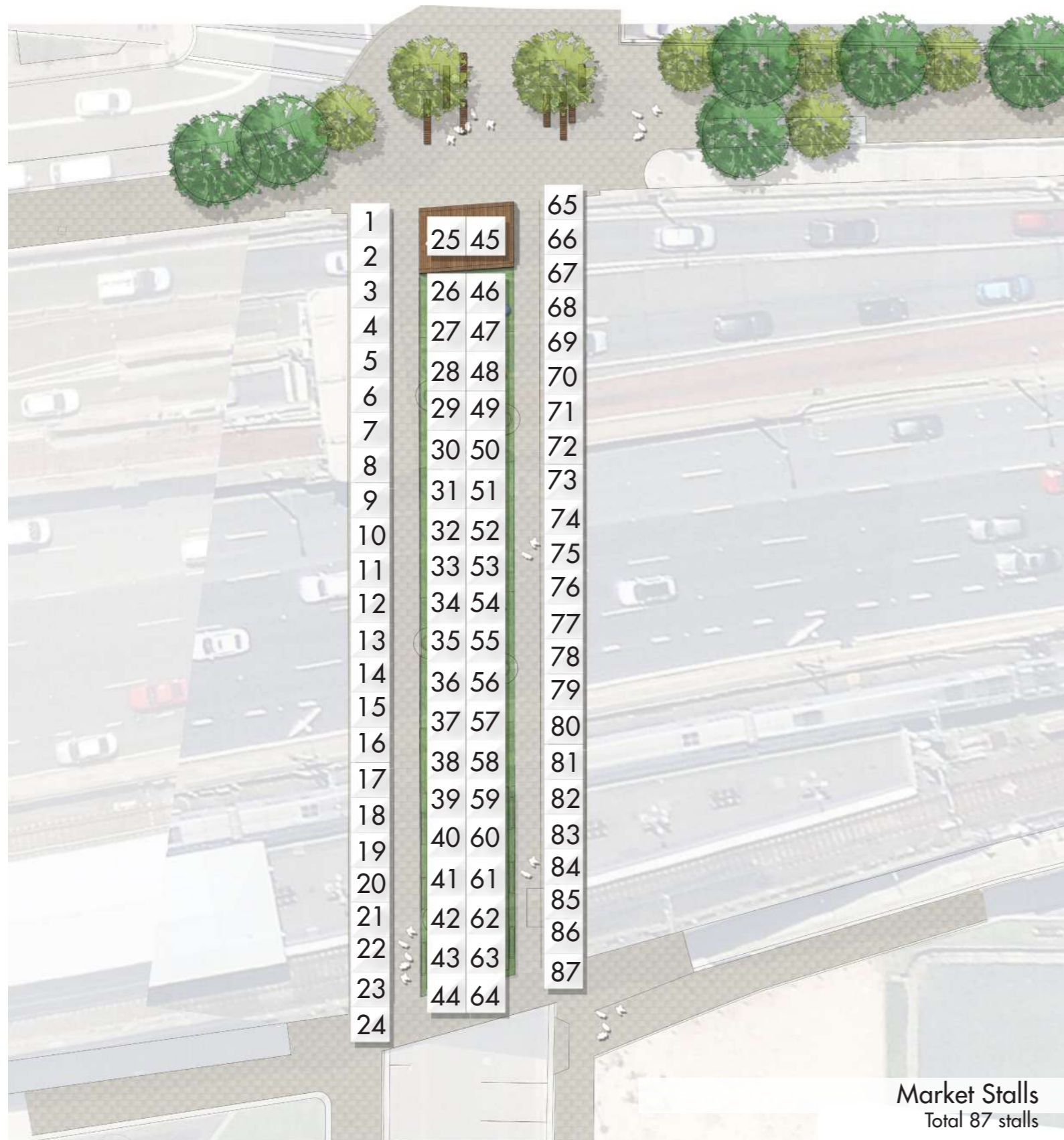
OPPORTUNITIES



the

BURTON STREET UNDERPASS MARKETS

THE BURTON STREET UNDERPASS MARKETS



the

BURTON STREET GREEN HEART

WHAT MAKES A GREEN HEART?



DAY & NIGHT USE



PEDESTRIAN PRIORITY

THE BURTON STREET GREEN HEART

EXISTING CONDITION





OPPORTUNITIES



KIRRIBILLI'S URBAN DOMAIN + LANDSCAPE INVESTIGATION

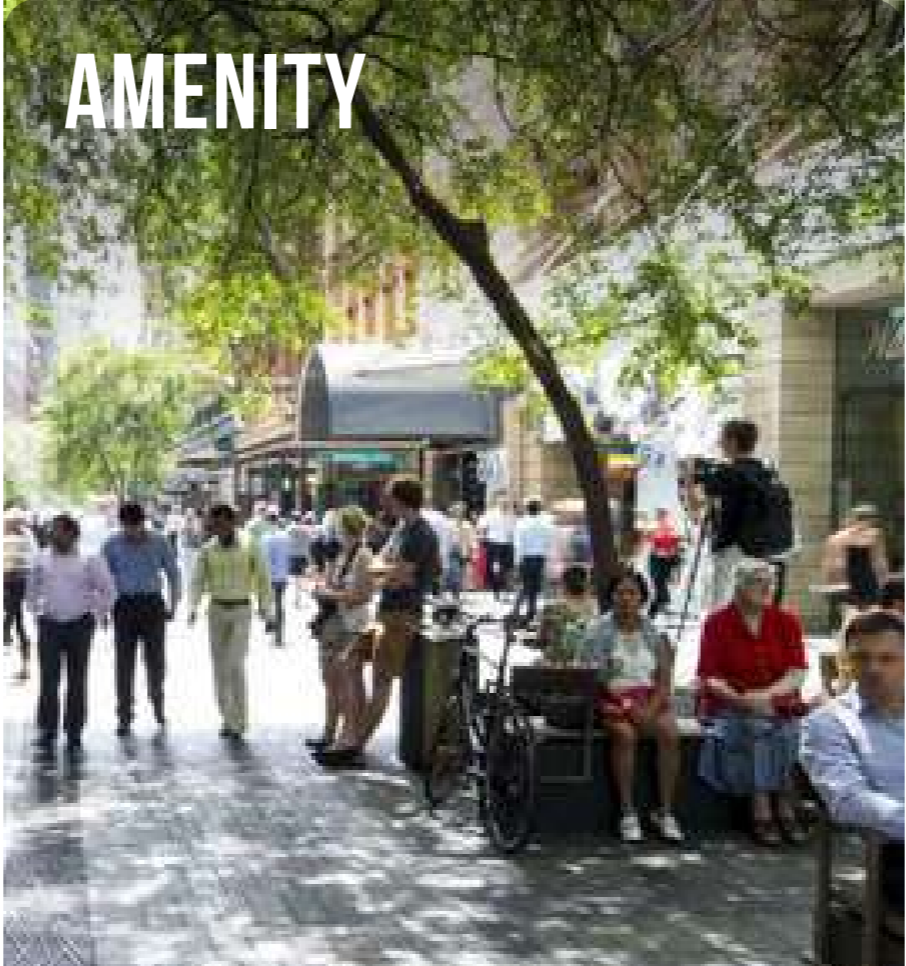
the

**BROUGHTON
HIGH STREET**

WHAT MAKES A GOOD HIGH STREET?



DAY AND NIGHT USE



AMENITY



EVENTS

THE BROUGHTON HIGH STREET

EXISTING CONDITION





OPPORTUNITIES



the

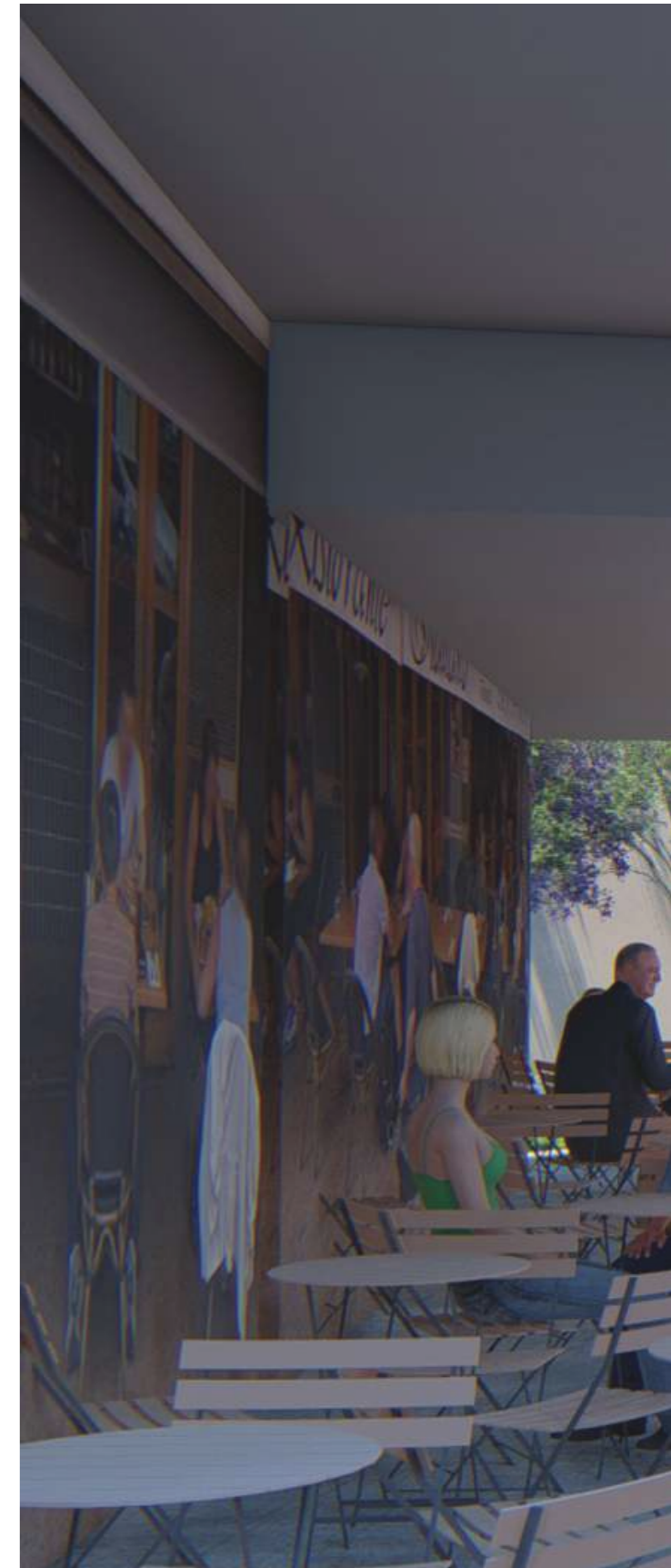
**BLIGH STREET
COMMUNITY
HEART**

WHAT IS A COMMUNITY HEART?



THE BLIGH STREET COMMUNITY HEART

EXISTING CONDITION





OPPORTUNITIES



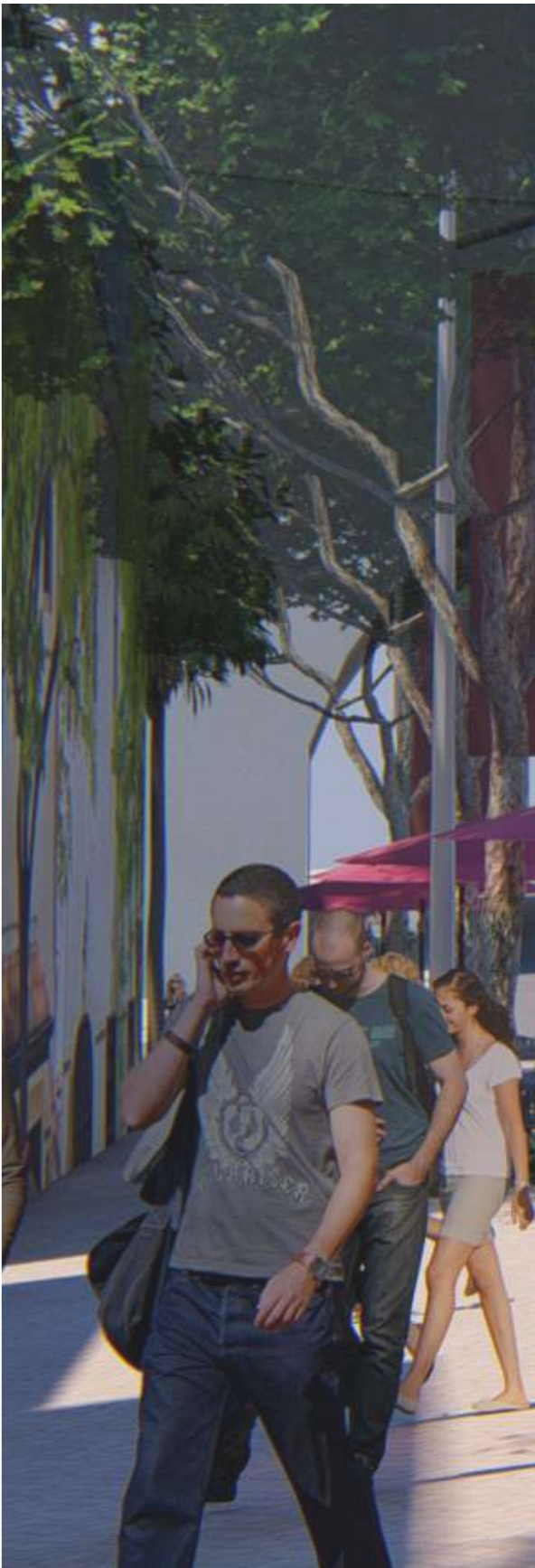
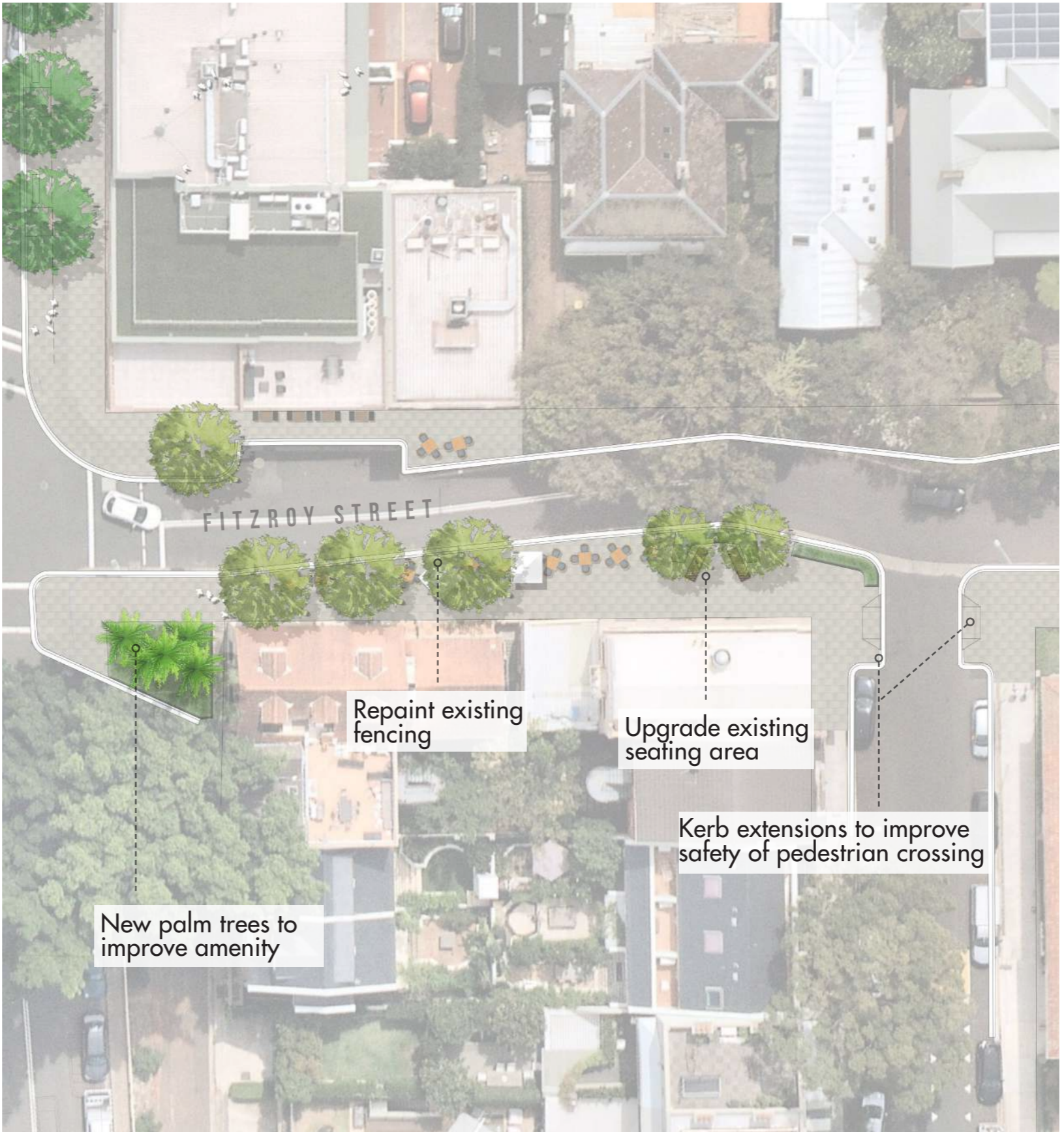
FITZROY STREET

WHAT DOES FITZROY NEED MORE OF?



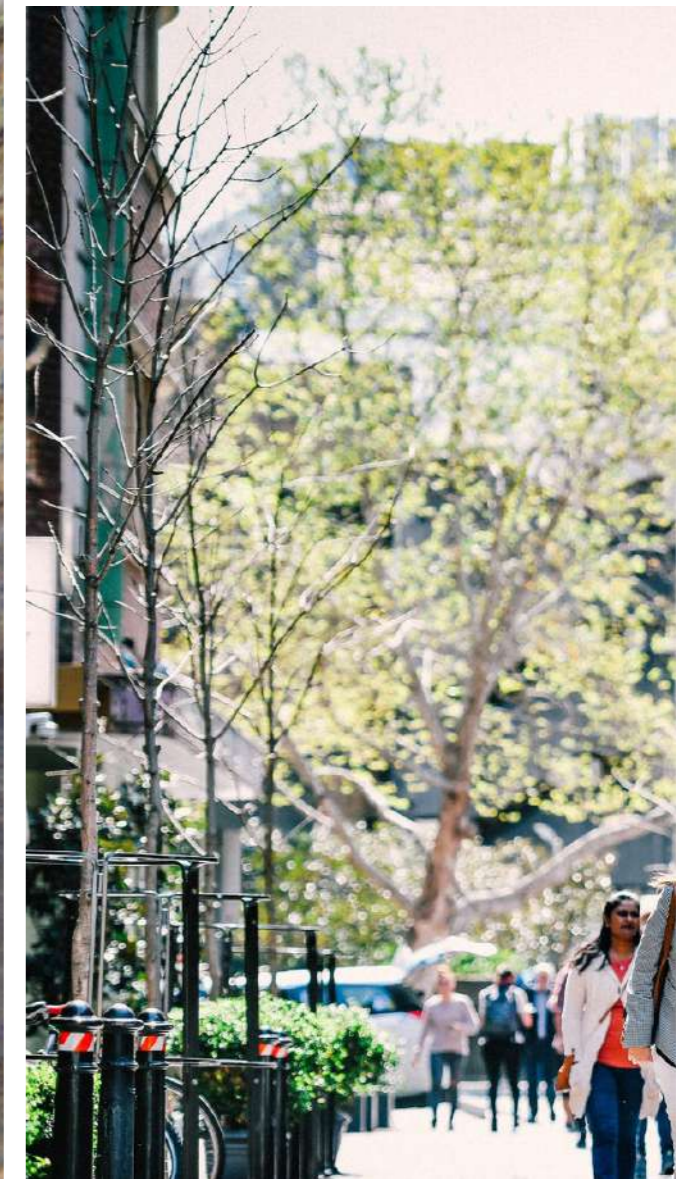
FITZROY STREET

EXISTING CONDITION



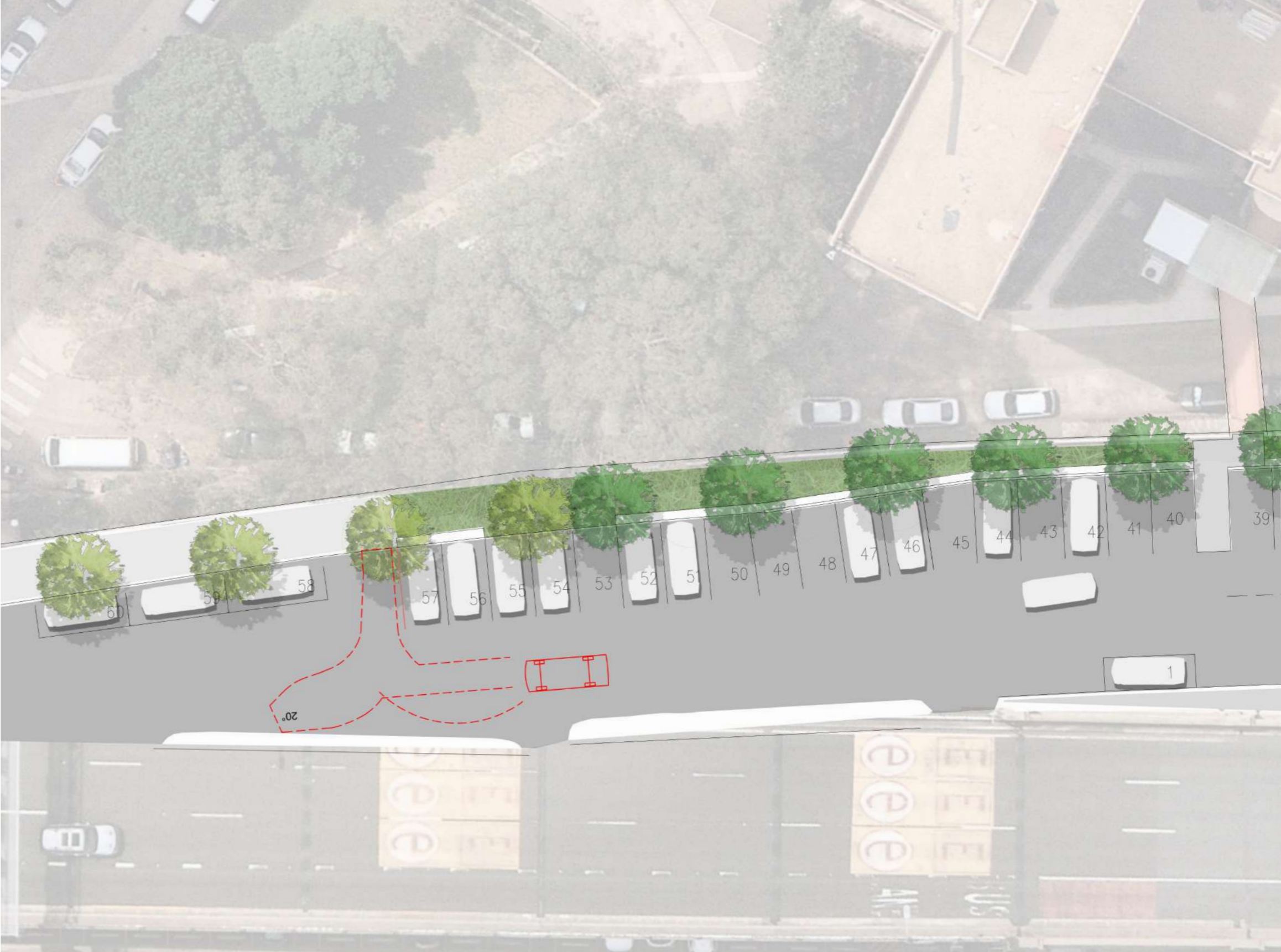


OPPORTUNITIES



UPPER ENNIS ROAD PARKING

EXISTING CONDITION



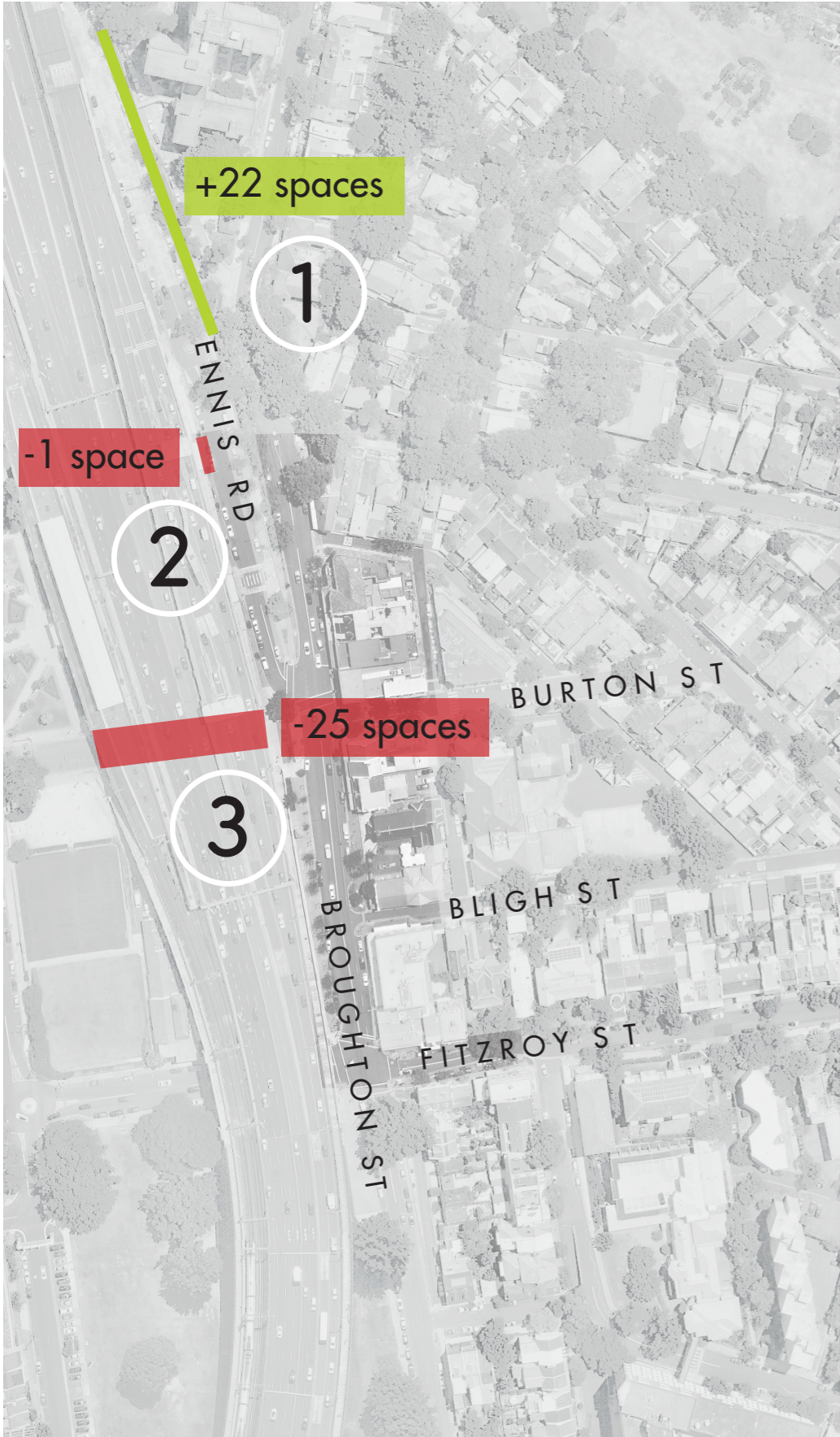


EXISTING LAYOUT =
38 SPACES

REVISED LAYOUT =
60 SPACES

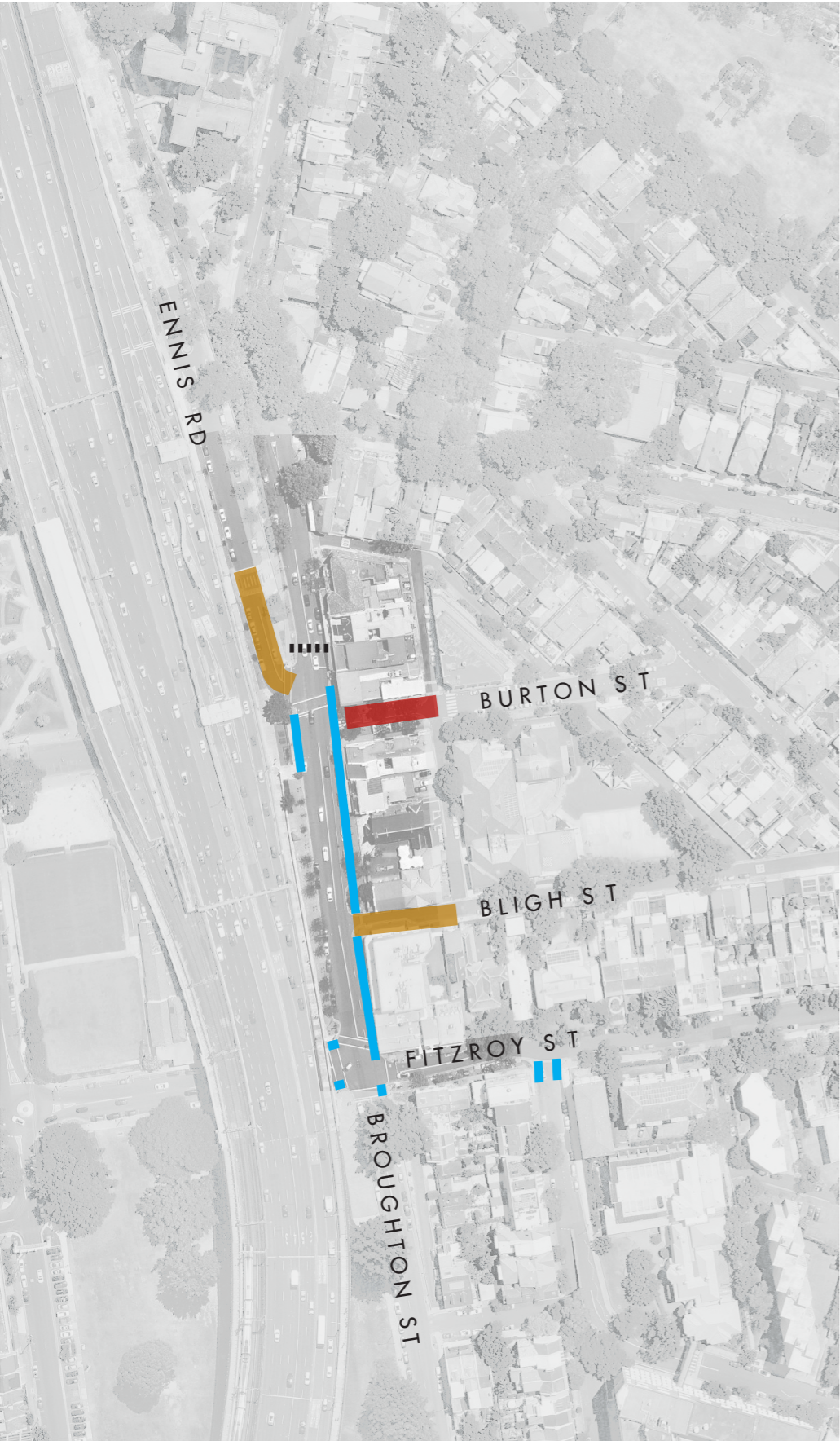
22 NEW SPACES

PARKING SPACES



AREAS	
1. UPPER ENNIS RD	+22
2. LOWER ENNIS RD	-1
3. BURTON ST UNDERPASS	-25
4. BURTON ST	NO CHANGE
5. BROUGHTON ST	NO CHANGE
6. FITZROY ST	NO CHANGE
TOTAL	-4

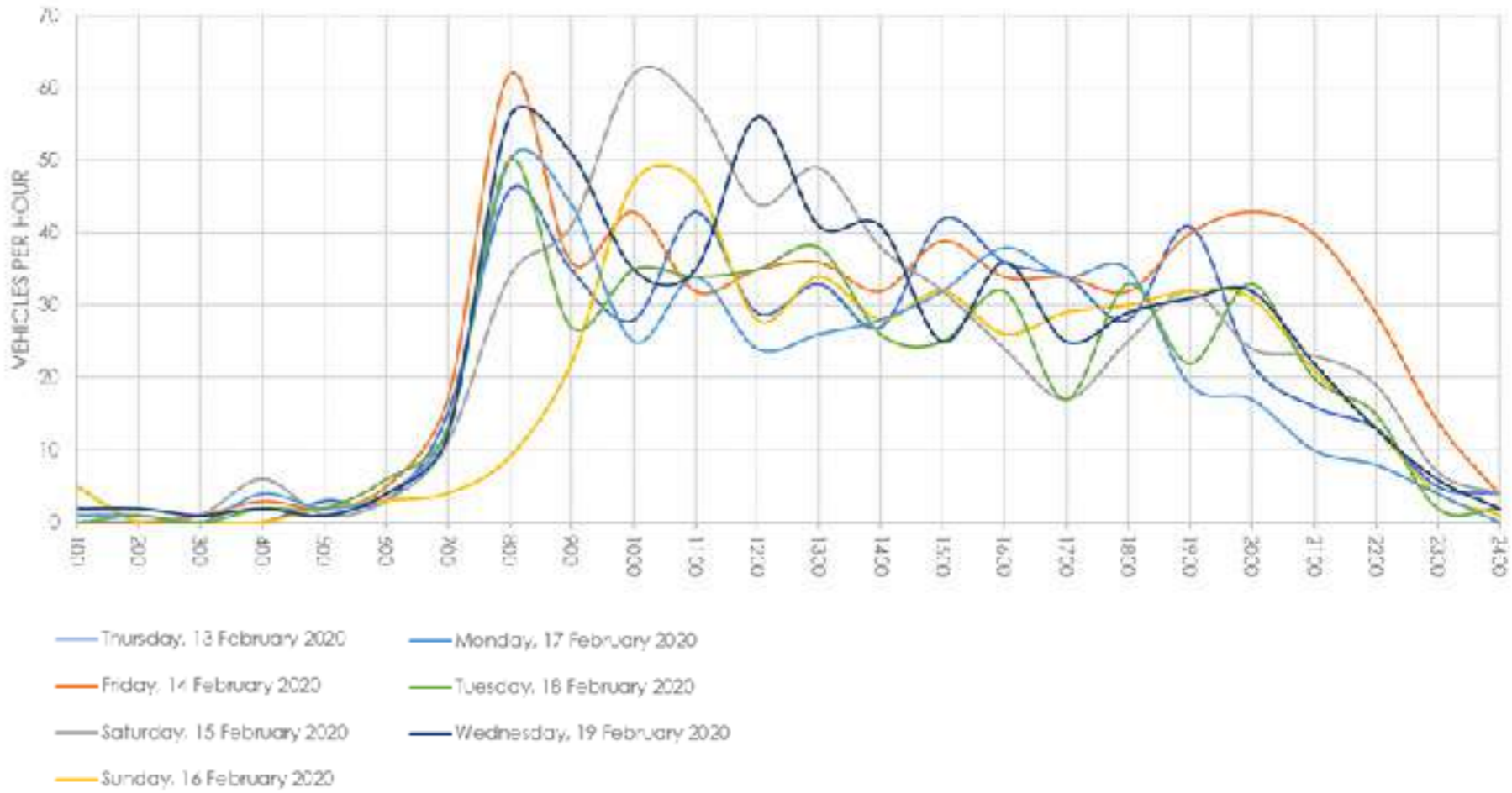
SUMMARY OF ROAD WORKS



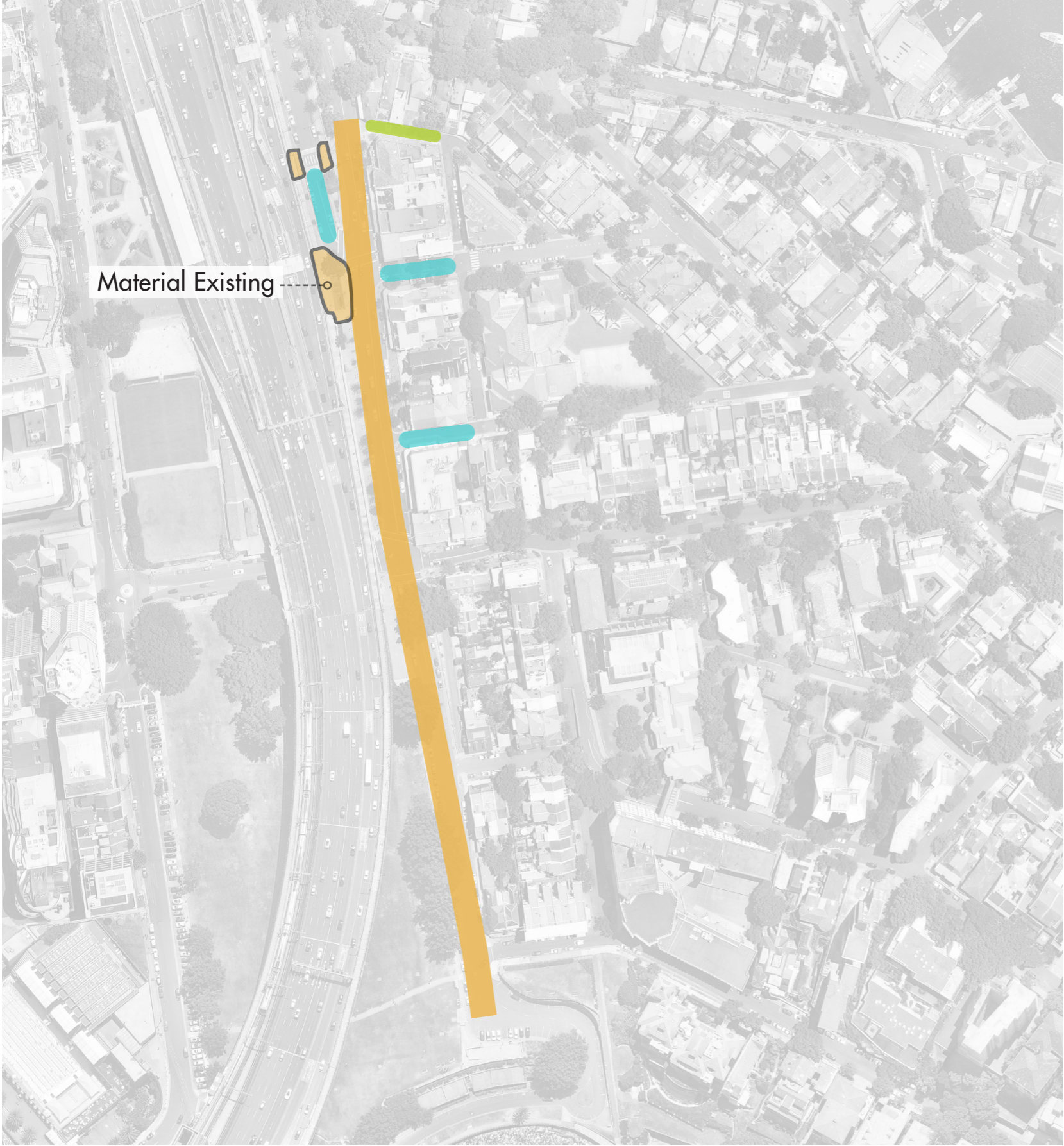
LEGEND

- FLUSH PEDESTRIAN STREET
- FLUSH SHARED STREET
- FOOTPATH WIDENING
- ADDITIONAL CROSSING

VEHICLE GENERATION PER HOUR - BLIGH STREET



MATERIAL PALETTE FUTURE



NORTH SYDNEY STYLE GUIDE CATEGORY 1 PAVING



MAIN STREETS



SHAREDWAYS



EXISTING PAVING TO BE REPLACED

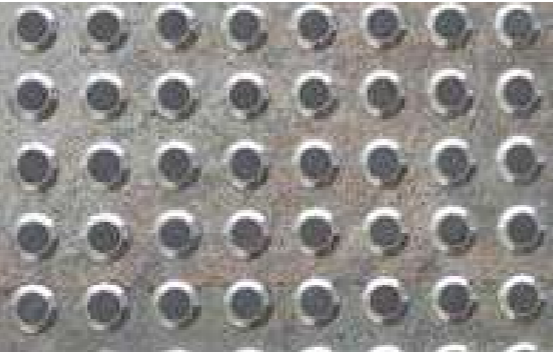
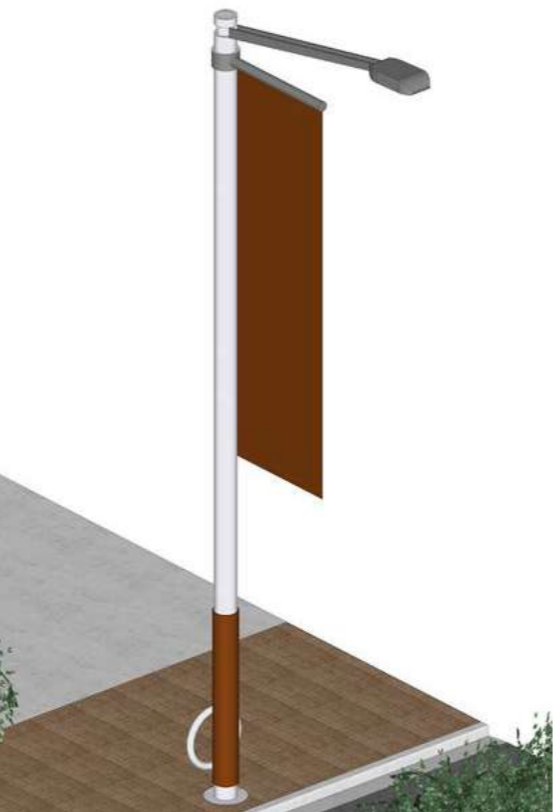


MATERIALS PALETTE NORTH SYDNEY STYLE GUIDE

FORMER



CURRENT



turf

SYDNEY

35 Wellington St
Chippendale NSW
2008

P 02 9527 3380

ABN: 77 097 739 663

TURFDESIGN.COM