



To the General Manager

Attach: 1. Concept Plan

SUBJECT: (4.3) Blues Point Road, McMahons Point - Proposed Traffic Calming

AUTHOR: Report of Manager Traffic & Transport Operations, Michaela Kemp

DESCRIPTION/SUBJECT MATTER:

Council has received further representations from residents of McMahons Point concerning vehicle noise, illegal parking and street racing in Blues Point Road near Blues Point Reserve.

A petition was tabled at the Traffic Committee meeting on 12 June 2020 where the Committee recommended and Council subsequently resolved:

1. *THAT the Committee receives and acknowledge the petition with 113 signatures and thanks all residents who have had input on this matter.*
2. *THAT discussions commence immediately with Council staff, NSW Police and the two local residents with a view to finding a permanent solution to the issues at this location.*
3. *THAT Council Traffic staff investigate restrictions to prohibit parking in evenings in consultation with the Police, and if approved under delegated authority, signage be installed by 12 July 2020.*
4. *THAT Council develop concept plans for immediate consultation with the local community regarding traffic calming at this location, and the associated actions in the LATM Action Plan at this location be given priority.*
5. *THAT the Minutes of this meeting be forwarded to Felicity O'Brien and Paul Singh.*

This report provides an update on progress of the investigations.

RECOMMENDATION:

1. **THAT** Council consults with the affected community with regard to the speed cushion traffic calming scheme for Blues Point Road between Princes Street and Blues Point Reserve as shown in the attached plans.
2. **THAT** Council request police enforcement of excessive noise from vehicles, illegal parking and street racing as raised by local residents, particularly on Friday and Saturday evenings between 9pm and 4am.
3. **THAT** Council request TfNSW install a speed camera in Blues Point Road between East Crescent Street and Blues Point Reserve.
4. **THAT** the traffic calming proposal be included in any funding applications for the McMahons Point (Blues Point Road) Public Domain Upgrade Masterplan and vice versa.

CONSULTATION REQUIREMENTS

Consultation will be undertaken in accordance with Council's Community Engagement Protocol

Relates to ECM No: 8272680; 8379670; 8379466; 8376892; 8272680; 8380674; 8380616; 8373543

Standard or Guideline Used: Austroads Guide to Traffic Management Part 8: Local Street Management

Signs & Lines Priority: N/A

Precinct and Ward: Lavender Bay, Wollstonecraft

Impact on Bicycles: Lower traffic speeds will provide safer environment for cyclists. Traffic calming scheme will comply with standards with regard to cycling

Impact on Pedestrians: Lower traffic speeds will provide safety environment for pedestrians.

Impact on Parking: Nil

DETAIL

Council has received further representations from residents of McMahons Point concerning vehicle noise, illegal parking and street racing in Blues Point Road near Blues Point Reserve.

The concerns raised include concerns about noise from frequent late-night gatherings at Blues Point Reserve and noisy vehicles and illegal parking in Blues Point Road adjacent to the Reserve.

Concerns raised about loud music and noise within Blues Point Reserve late at night is not a matter for the Traffic Committee and has been referred to Council's Open Space and Environment Division for attention.

A petition was tabled at the Traffic Committee meeting on 12 June 2020 where the Committee recommended and Council subsequently resolved:

- 1. THAT the Committee receives and acknowledge the petition with 113 signatures and thanks all residents who have had input on this matter.*
- 2. THAT discussions commence immediately with Council staff, NSW Police and the two local residents with a view to finding a permanent solution to the issues at this location.*
- 3. THAT Council Traffic staff investigate restrictions to prohibit parking in evenings in consultation with the Police, and if approved under delegated authority, signage be installed by 12 July 2020.*
- 4. THAT Council develop concept plans for immediate consultation with the local community regarding traffic calming at this location, and the associated actions in the LATM Action Plan at this location be given priority.*
- 5. THAT the Minutes of this meeting be forwarded to Felicity O'Brien and Paul Singh*

Following a site meeting with NSW Police and Manager Ranger Services, "No Stopping 9pm-6am" and "No Parking Other Times" were installed around the cul-de-sac adjacent to Blues Point Road. Four existing "½ Hour Parking 8.30am-6pm Mon-Fri" spaces at the south-easternmost end of Blues Point Road were retained and "No Stopping 9pm-6am" restrictions were also installed across these spaces.

Council staff also met with a local resident to discuss the specific traffic concerns onsite to assist the investigations.

Some suggestions requested by the residents to alleviate the traffic issues include:

- Remove the four parking spaces at the south-easternmost end of Blues Point Road and install a roundabout within the turning area
- Traffic calming devices along Blues Point Road
- Increased enforcement of parking restrictions and noisy vehicles
- Installation of additional signage “Restricted Parking Area – No Parking 10pm-6am”
- Roundabout at the intersection of Blues Point Road and Henry Lawson Avenue
- CCTV
- Speed camera

Other suggestions made by residents with respect to Blues Point Reserve would be a matter for Council’s Open Space and Environment Division to consider

- Increased lighting within Blues Point Reserve
- Closure of the park between 10pm to 6am
- CCTV

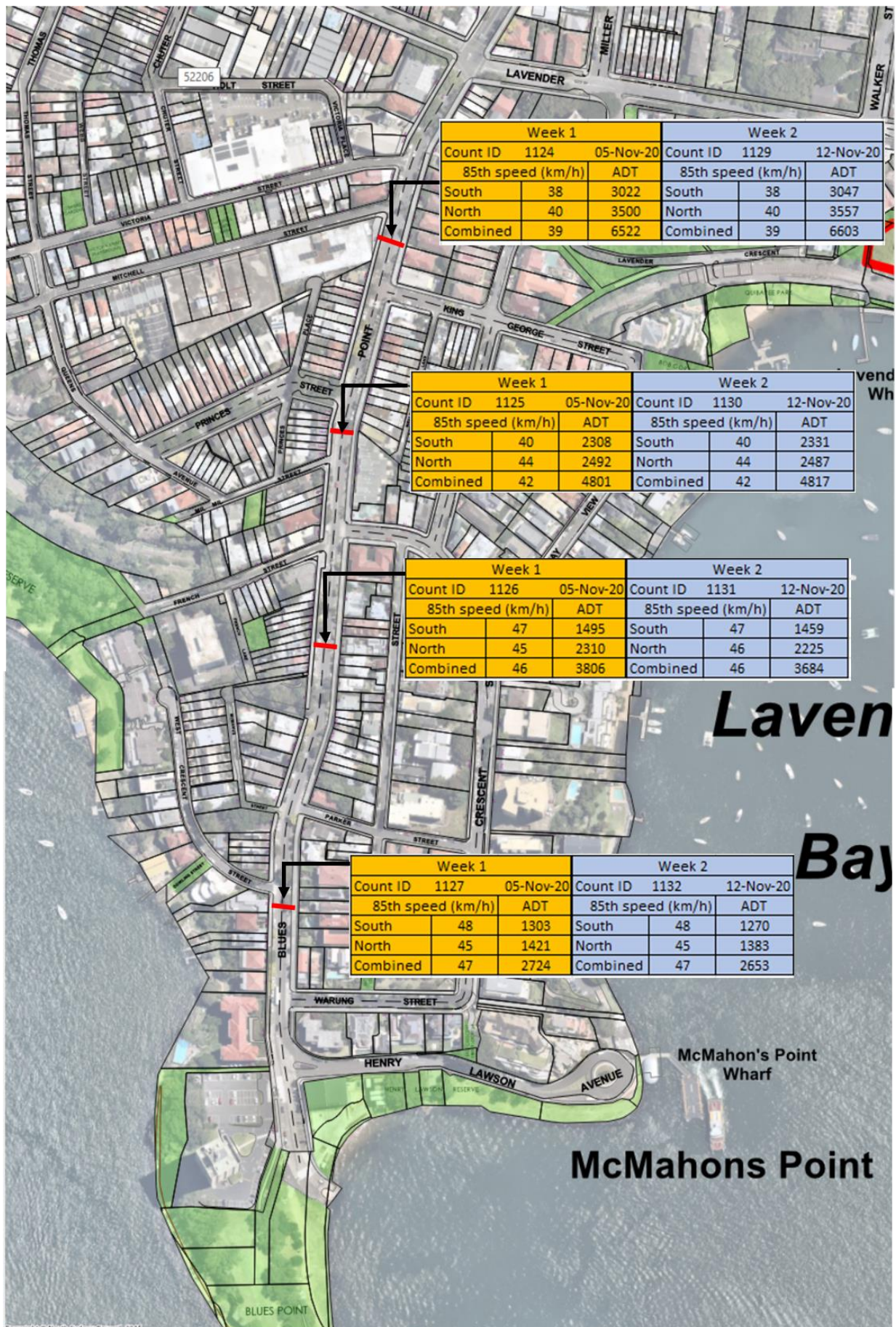
Traffic Data

Traffic counts were obtained on Blues Point Road, between Lavender Street and Warung Street, over a two-week period in November 2020 to gauge the extent of the speeding issues and to inform the development of the proposed traffic calming scheme.

The traffic volume increases from south to north along Blues Point Road, ranging between 2653 vehicles per day to 6603 vehicles per day. Traffic speeds gradually increase along Blues Point Road with 85th percentile speeds of 39km/h to 47km/h from north to south. The 85th percentile speeds are below the default urban speed limit of 50km/h applicable to Blues Point Road.

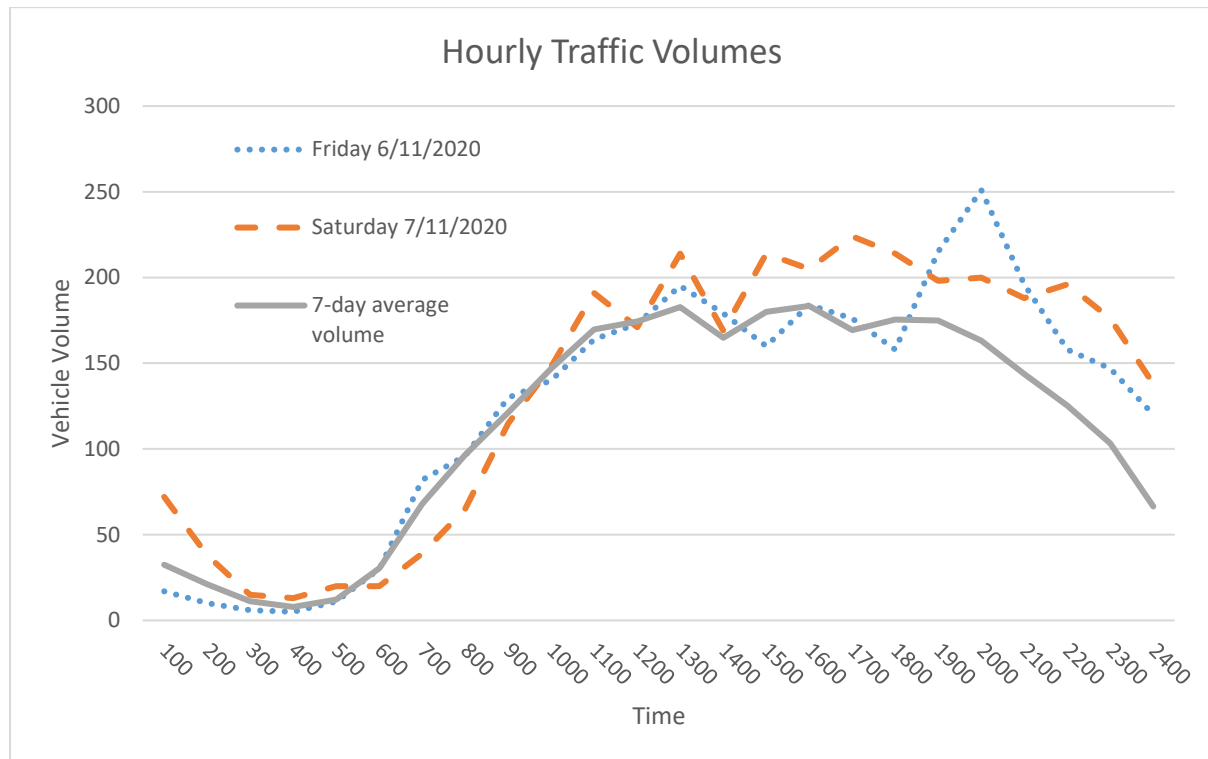
A summary of the traffic count data is presented in Figure 1 over page.

Figure 1 Summary of Blues Point Road traffic count speed and volume data 5/11/20 to 19/11/20



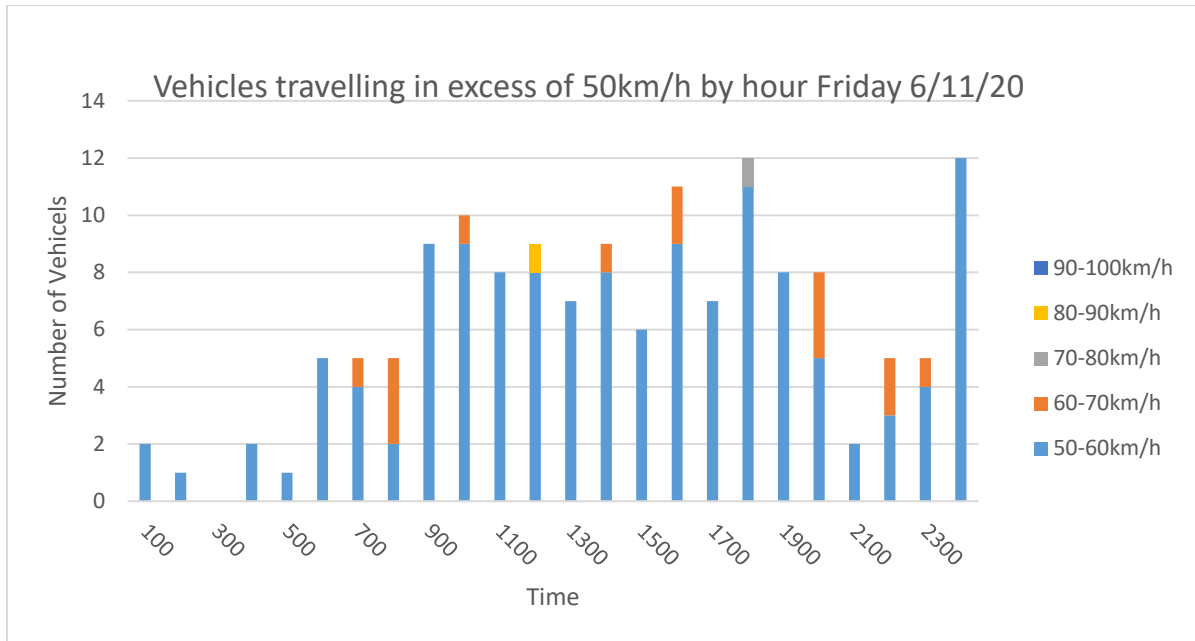
A more detailed analysis of the speed and volume data was undertaken for the portion of Blues Point Road south of West Crescent Street which is closest to Blues Point Reserve and experiences the highest traffic speeds. Traffic volumes peak on Fridays and Saturdays and are on average 10 to 20% higher than the 7-day average traffic volumes. There is a spike in traffic volumes on Saturday evenings between 7pm-10pm compared to the average 7-day volume at the same time.

Figure 2 Blues Point Road Hourly Traffic Volumes – Count ID 1127 – West Crescent Street to Warung Street



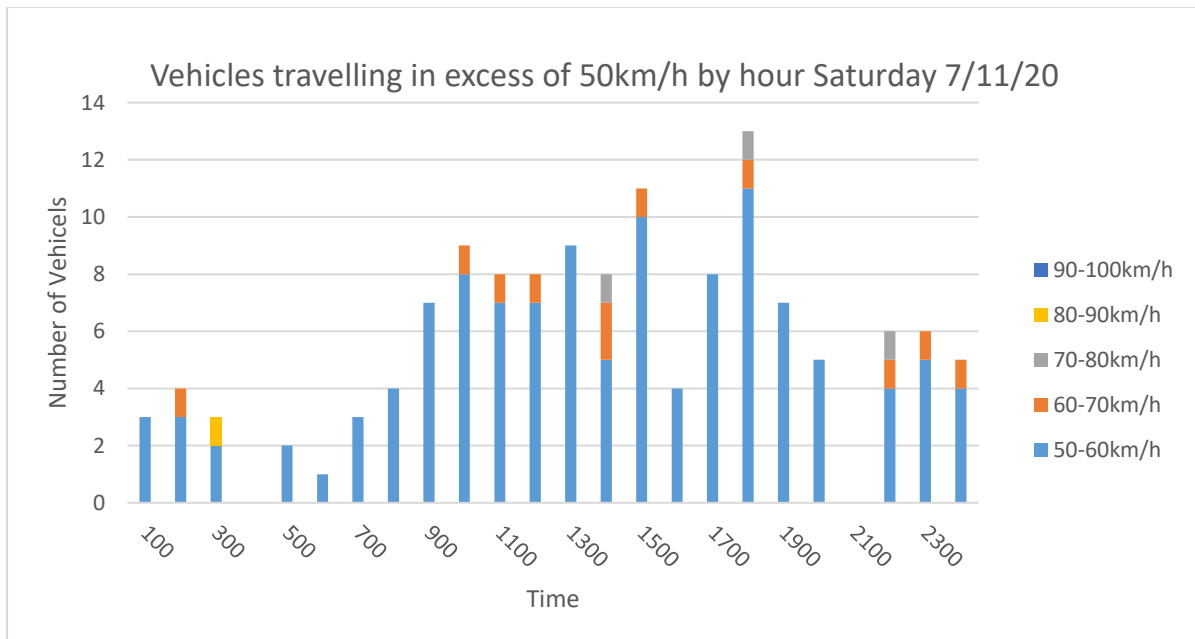
Of the 3,003 vehicles travelling on Blues Point Road on Friday 6/11/20, 95% of vehicles travelled at or below the 50km/h speed limit. 149 vehicles (4.9%) travelled in excess of the 50km/h speed limit. Of those, 14 vehicles (0.46%) travelled between 60-70km/h at various times between 7am and 10pm; 1 vehicle travelled between 70-80km/h between 6pm-7pm; and 1 vehicle travelled between 80-90km/h between 12pm-1pm. The graph in Figure 3 shows the hourly excess vehicle speeds.

Figure 3 Excess vehicle speeds Blues Point Road Count ID 1127 – Friday 6/11/20



Similarly, of the 3,243 vehicles travelling on Blues Point Road on Saturday 7/11/20, 96% of vehicles travelled at or below the 50km/h speed limit. 134 vehicles (4.1%) travelled in excess of the 50km/h speed limit. Of those, 11 vehicles (0.3%) travelled between 60-70km/h at various times throughout the day; 3 vehicles travelled between 70-80km/h at 2pm, 6pm and 10pm. The graph in Figure 4 shows the hourly excess vehicle speeds.

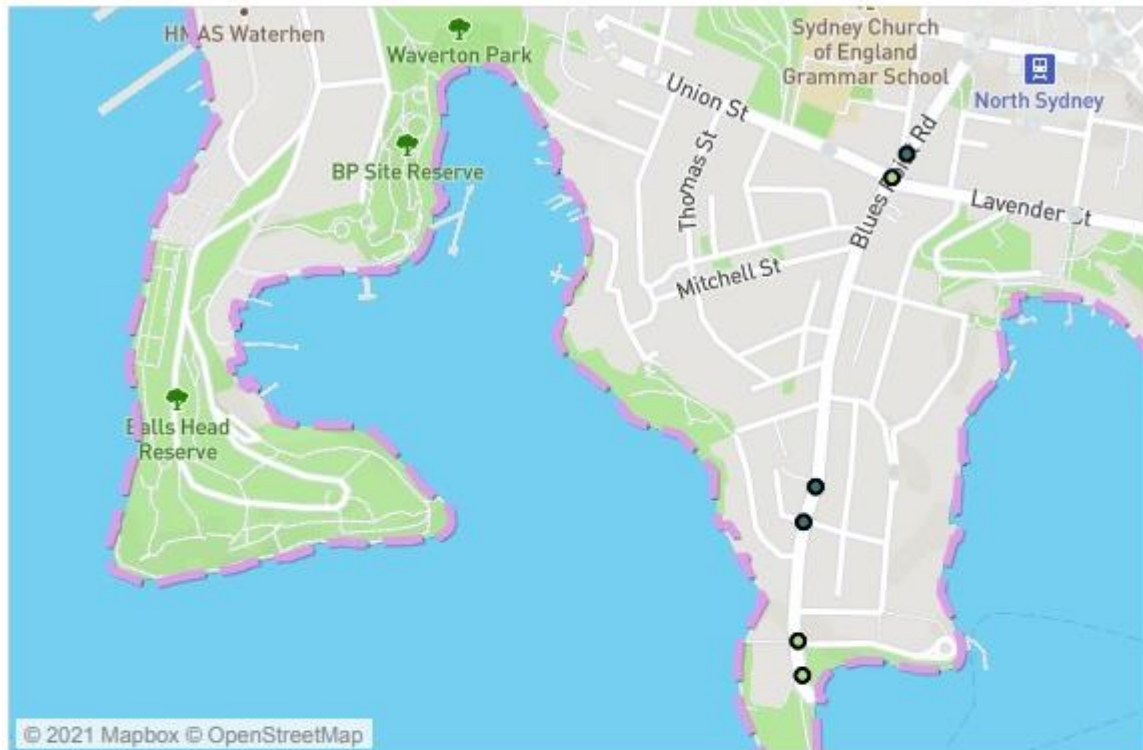
Figure 4 Excess vehicle speeds Blues Point Road Count ID 1127 - Saturday 7/11/20



Crash History

A review of the most recent 5-year TfNSW crash data revealed 6 crashes on Blues Point Road between Lavender Street and Blues Point Reserve including 3 casualty crashes. There were no crashes involving pedestrians or cyclists recorded. A summary of the crashes is outlined in Figure 5.

Figure 5 Blues Point Road crash summary 2015-2019 (Source TfNSW)



Reporting ..	Crash ID	Degree of crash	RUM - code	RUM - description	Type of location	Natural light
2015	1075375	Serious Injury	42	Leaving parking	2-way undivided	Daylight
2016	1099727	Non-casualty (t..	44	Parking vehicles	T-junction	Daylight
	1122971	Non-casualty (t..	41	U turn into object	2-way undivided	Darkness
2017	1150503	Serious Injury	30	Rear end	2-way undivided	Daylight
2018	1163451	Non-casualty (t..	11	Right far	X-intersection	Dusk
2019	1212693	Serious Injury	10	Cross traffic	T-junction	Daylight

Discussion

The traffic count data reveals that the 85th percentile speed of 39-47km/h on Blues Point Road is below the 50km/h speed limit. Therefore, the majority of motorists on Blues Point Road are obeying the speed limit. Less than 5% of motorists are exceeding the speed limit, and as outlined above, this occurs at different times throughout the day, and is not concentrated to late night. It is possible that the perceived speeding concerns late at night is associated with particularly noisy vehicles, which is further exacerbated when they accelerate up Blues Point Road.

Whilst traffic calming is not likely to prevent such noise, the desirable 85th percentile speed for Blues Point Road is 40km/h, as identified in the North Sydney 40km/h & 10km/h Shared Zone Masterplan; and traffic calming may assist to reduce general traffic speeds to this level.

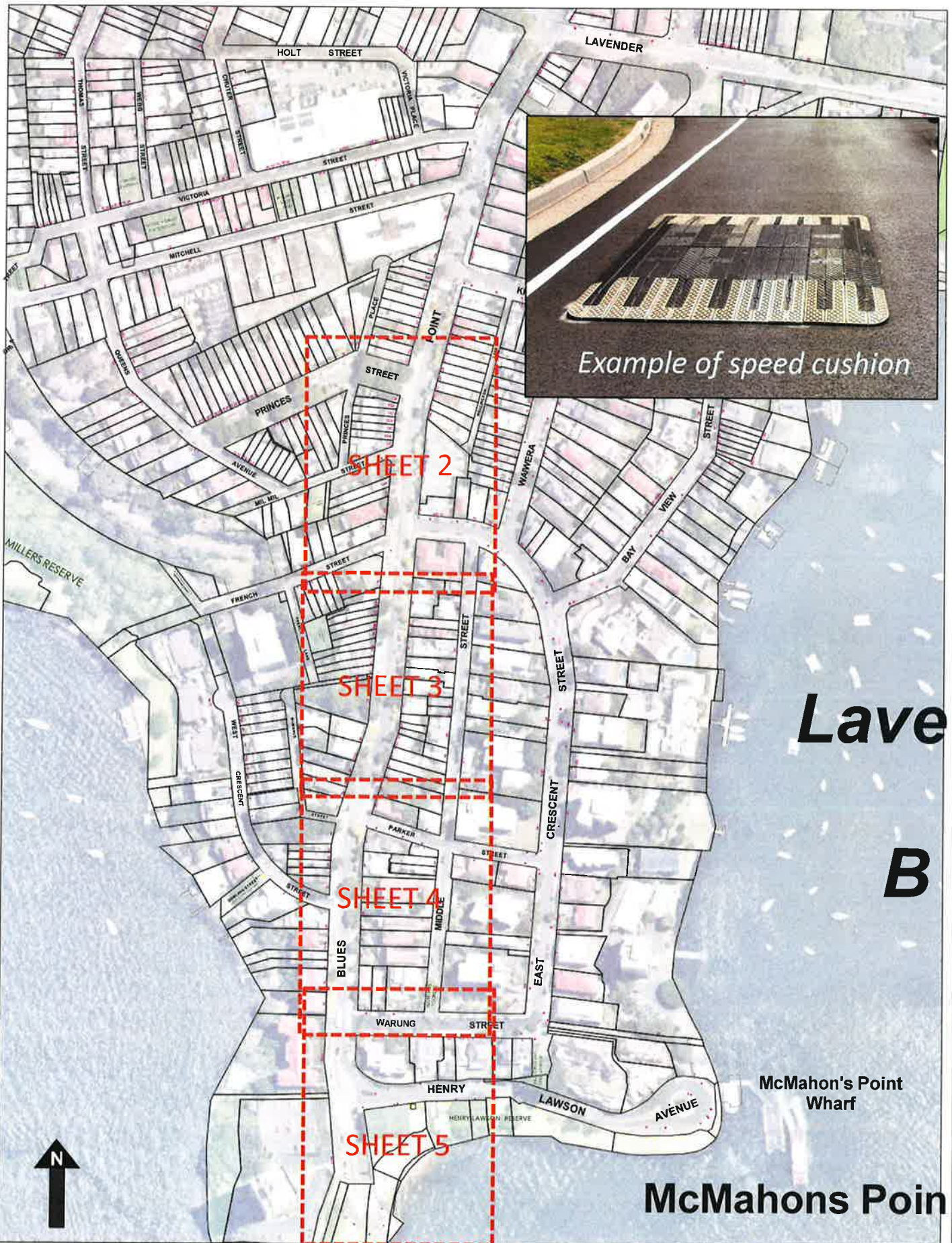
Angled slow-points, speed cushions and flat top road humps generally provide the most effective speed reductions. Angled slow points are unlikely to be suitable or effective in Blues Point Road due to the need for less deflection in order to accommodate buses which operate along the route. Similarly, speed cushions are preferred over flat top road humps on bus routes as they allow buses to straddle the devices.

However, it is possible that such devices could cause additional noise concerns as vehicles traverse over the devices and accelerate on departure from the device.

Based on the above, a concept plan for speed cushions spaced at the recommended 70-80 metre spacings has been prepared as attached and is recommended that Council consult with affected residents and businesses regarding the proposed scheme. The proposed locations of the speed cushions also take into consideration the McMahons Point (Blues Point Road) Public Domain Upgrade Masterplan that was recently exhibited to complement the planned upgrades along Blues Point Road.

The specific vehicle noise, street racing and illegal parking issues are a matter for the Police and/or Council Rangers and given the nature of the concerns, it is recommended that Council request Police enforcement to discourage illegal and anti-social activities.

In addition, Council may request TfNSW consider installation of a speed camera to target enforcement of speeding in Blues Point Road at all times of the day.



Example of speed cushion

SHEET 2

SHEET 3

SHEET 4

SHEET 5

Lave
B

McMahon's Point
Wharf

McMahons Poin



North Sydney Council

Copyright © North Sydney Council - No part of this map may be reproduced without permission. Commercial decisions should not be made based on information contained in this map without first checking details held by the responsible Government authority.

Further details can be obtained by calling (02) 9936 8100 or e-mail mapinfo@northsydney.nsw.gov.au

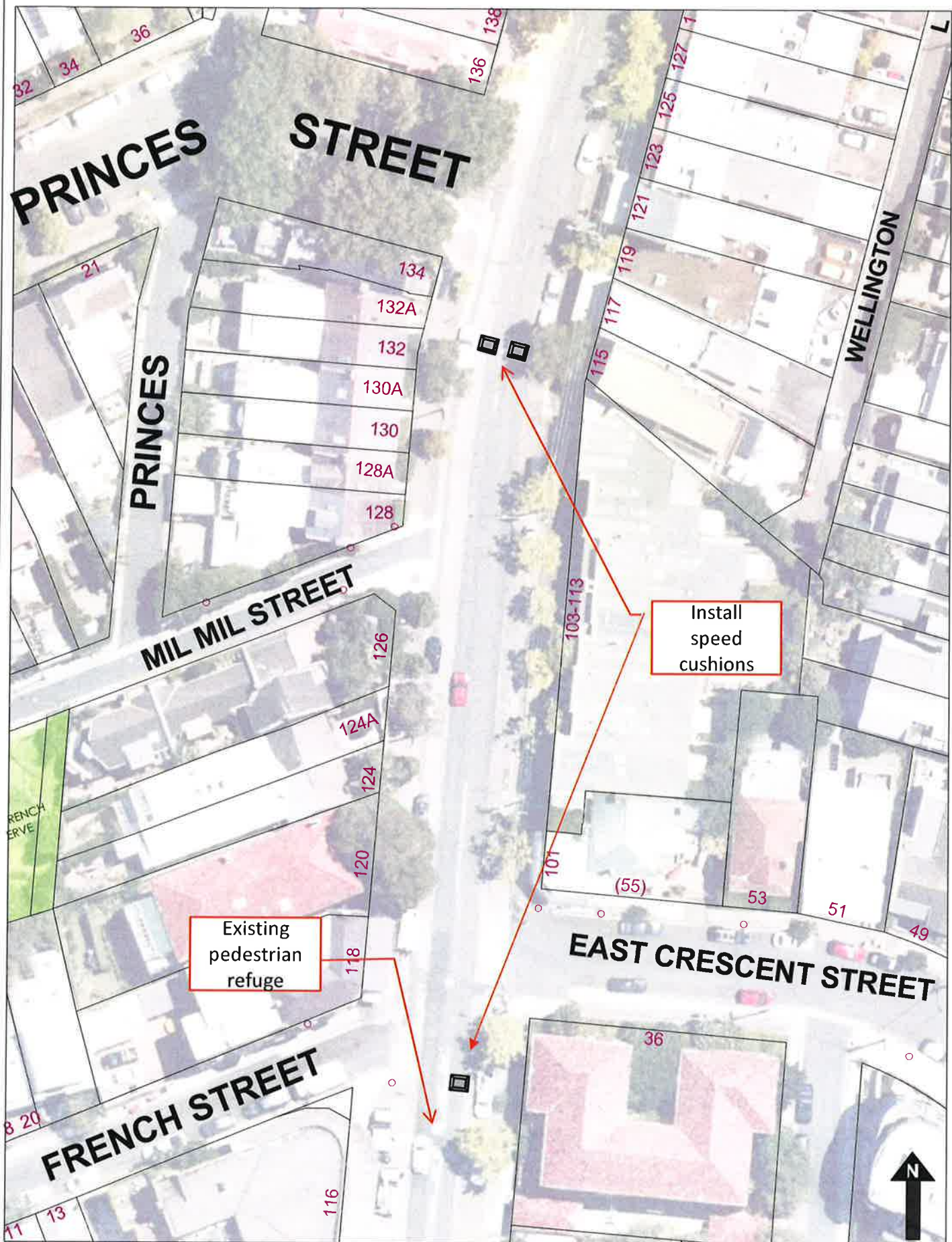
FOR CONSULTATION

Date: January 2021

Blues Point Road, McMahon's Point

Proposed Speed Cushions – Traffic Calming Scheme

Sheet 1 of 5 – General Arrangement



North Sydney Council

Copyright © North Sydney Council - No part of this map may be reproduced without permission. Commercial decisions should not be made based on information contained in this map without first checking details held by the responsible Government authority

Further details can be obtained by calling (02) 9936 6100 or e-mail mapinfo@northsydney.nsw.gov.au

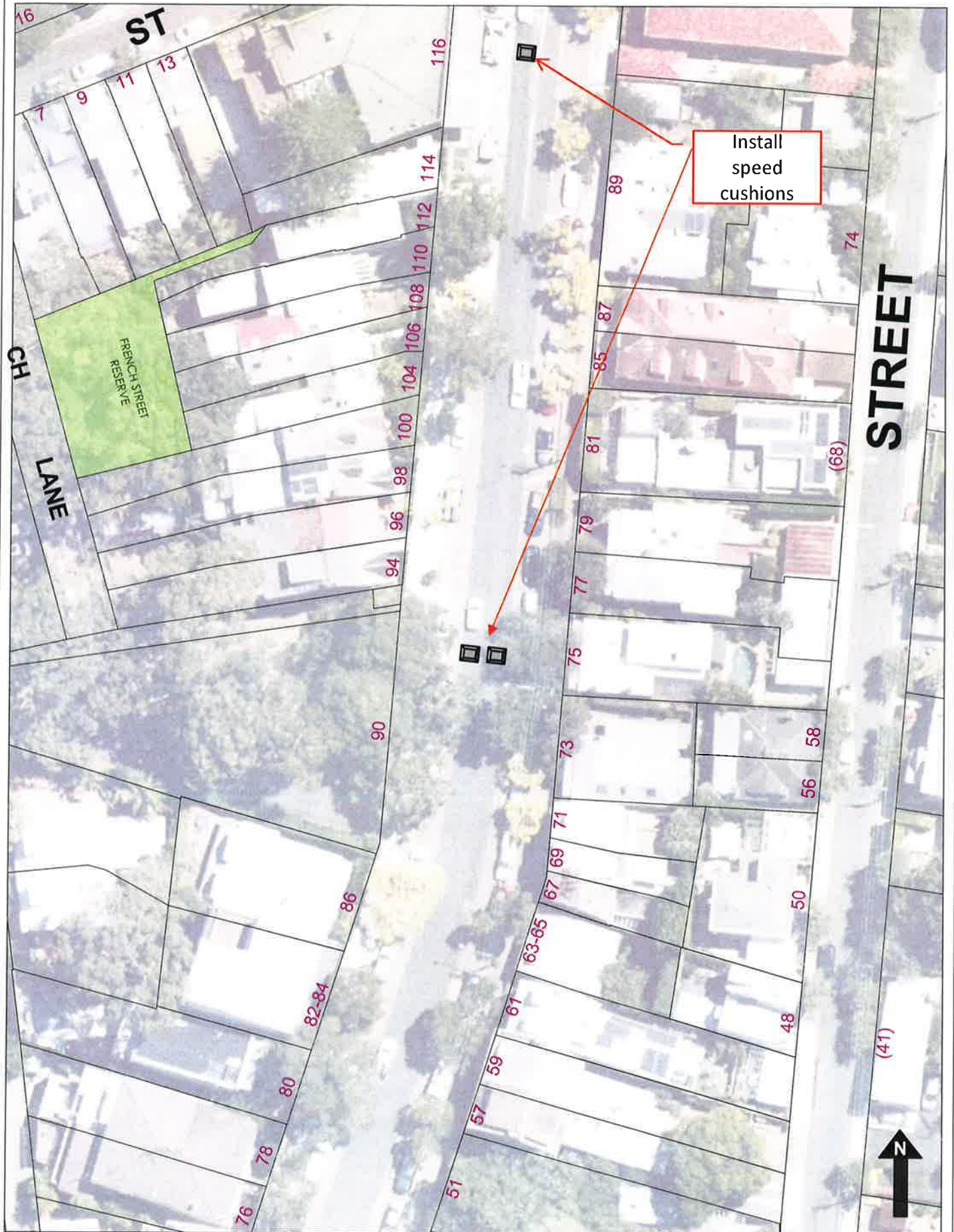
FOR CONSULTATION

Date: January 2021

Blues Point Road, McMahon's Point

Proposed Speed Cushions – Traffic Calming Scheme

Sheet 2 of 5



North Sydney Council

Copyright © North Sydney Council - No part of this map may be reproduced without permission. Commercial decisions should not be made based on information contained in this map without first checking details held by the responsible Government authority.

Further details can be obtained by calling (02) 9936 8100 or e-mail mapinfo@northsydney.nsw.gov.au

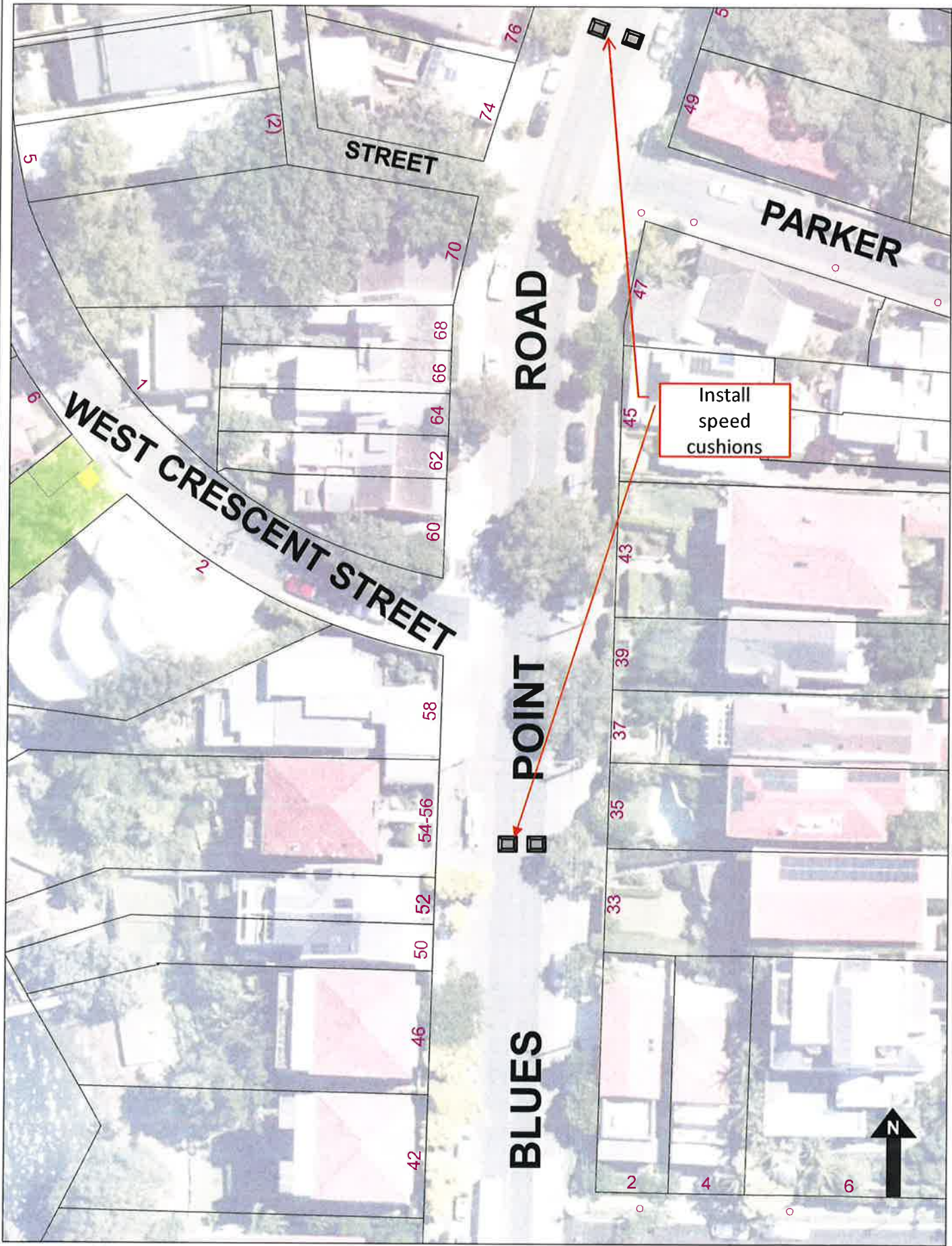
FOR CONSULTATION

Date: January 2021

Blues Point Road, McMahon's Point

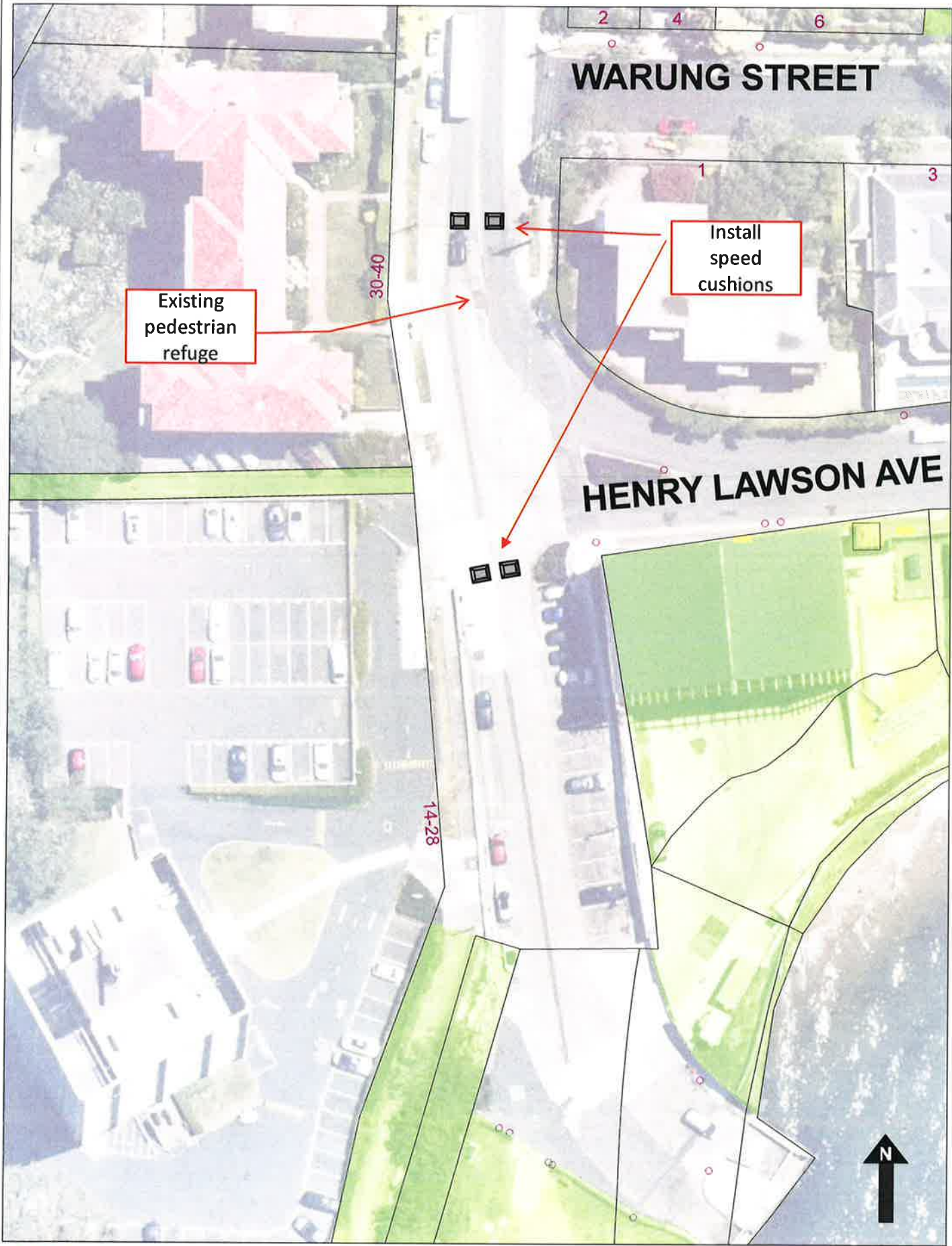
Proposed Speed Cushions – Traffic Calming Scheme

Sheet 3 of 5



North Sydney Council
 Copyright © North Sydney Council - No part of this map may be reproduced without permission. Commercial decisions should not be made based on information contained in this map without first checking details held by the responsible Government authority.
 Further details can be obtained by calling (02) 9936 8100 or e mail mapping@northsydney.nsw.gov.au

FOR CONSULTATION Date: January 2021
 Blues Point Road, McMahon's Point
 Proposed Speed Cushions – Traffic Calming Scheme
 Sheet 4 of 5



Existing pedestrian refuge

Install speed cushions

30-40

14-28

WARUNG STREET

HENRY LAWSON AVE



North Sydney Council
 Copyright © North Sydney Council - No part of this map may be reproduced without permission. Commercial decisions should not be made based on information contained in this map without first checking details held by the responsible Government authority.
 Further details can be obtained by calling (02) 9939 8100 or e-mail mspping@northsydney.nsw.gov.au

FOR CONSULTATION Date: January 2021
 Blues Point Road, McMahon's Point
 Proposed Speed Cushions – Traffic Calming Scheme
 Sheet 5 of 5