



# AGENDA

A meeting of **Sport and Recreation Reference Group** will be held on Cammeraygal Land at the Ros Crichton Pavilion Council Chambers, 200 Miller Street, North Sydney at 6:00 PM on Monday 16 May 2022.

The agenda is as follows.

Ken Gouldthorp  
**GENERAL MANAGER**



*North Sydney Council is an Open Government Council. The records of Council are available for public viewing in accordance with this policy, with the only exception being made for certain confidential documents such as legal advice, matters required by legislation not to be divulged, and staff matters.*



## **1. Confirmation of Minutes**

The Minutes of the previous meeting held on 16 March 2020, copies of which had been previously circulated, were taken as read and confirmed.

## **2. Disclosures of Interest**

### **3. Committee Reports**

#### **3.1. Outdoor Fitness Equipment**

**AUTHOR:** Alicja Batorowicz, Landscape Architect/Project Co-ordinator

**ENDORSED BY:** Rob Emerson, Director Open Space and Environmental Services

**ATTACHMENTS:** Nil

#### **PURPOSE:**

The purpose of this report is to provide Council with a progress update on the implementation of outdoor fitness equipment across North Sydney.

#### **EXECUTIVE SUMMARY:**

This report provides a progress summary of the outdoor gym equipment implementation.

#### **FINANCIAL IMPLICATIONS:**

Funds have been allocated in the 2021/22 budget for the installation of outdoor fitness equipment in Anderson Park. Funding is being sought for inclusion in the next Delivery Program to allow the installation of fitness equipment in Berry Island Reserve, Bradfield Park and Brennan Park.

#### **RECOMMENDATION:**

**1. THAT** the outdoor fitness equipment report be received.



## **LINK TO COMMUNITY STRATEGIC PLAN**

The relationship with the Community Strategic Plan is as follows:

### **1. Our Living Environment**

#### **1.4 Public open space and recreation facilities and services meet community needs**

## **BACKGROUND**

Placement of outdoor fitness equipment has been considered in the Draft Playground Plan of Management, which is currently on public exhibition. These facilities are often co-located with playgrounds, and cater to the needs of children, teens and older members of the community who have 'outgrown' playgrounds. This Report outlines the progress of outdoor gym equipment implementation in recent years and provides details on parks suitable to accommodate fitness equipment in the future.

## **CONSULTATION REQUIREMENTS**

Community engagement is not required.

## **DETAIL**

Outdoor fitness equipment hubs are a special part of North Sydney's open space network. They are more than equipment and physical spaces; they are places for the local community to be physically active, places for members of the public to gather and interact in an active way. It allows park users to exercise in the fresh air and to connect with nature and with others in the community in a friendly, social environment. It can help improve the mental and physical well-being of users.

As noted in the Draft Playgrounds Plan of Management: *'Providing free outdoor facilities which are available for use at any time removes some of the barriers that may prevent people from exercising. Park and reserves with fitness equipment and other facilities tend to be busier; this makes them feel safer and discourages antisocial behaviors. There is also less misuse of park furniture not intended for physical activity.'*

At present, North Sydney offers several parks which contain outdoor fitness equipment. In the early 1980's outdoor fitness equipment was installed in Ted Mack Civic Park. The equipment was instantly popular, however despite its attractiveness it was not until 2008 that the next fitness elements were introduced in Euroka Street Playground. Since then, outdoor fitness equipment has been installed in 7 other locations. Current locations of outdoor fitness equipment in North Sydney are listed in the table below.

Table 1

Outdoor Fitness Equipment in North Sydney

Location	Year of installation
Cremorne Reserve, Cremorne Point *	2010
Euroka Street Playground, Waverton *	2008
Forsyth Park, Neutral Bay *	2011
Green Park, Cammeray	2015
Kesterton Park, North Sydney*	2018
Ted Mack Civic Park	2003
Tunks Park, Cammeray	2003
Waverton Park, Waverton (3 locations)*	2015

\* Fitness equipment is directly associated with a playground

Following a thorough assessment of parks suitable to accommodate fitness equipment in North Sydney a list of priorities ordered from 1-3, with 1 being the highest priority, was created and is being presented in the Draft Playgrounds Plan of Management 2021.

Table 2

Priority Parks & Reserves for Fitness Equipment

Priority 1	Priority 2	Priority 3
Anderson Park	Blues Point Reserve	Anzac Park
Berry Island Reserve	Brightmore Reserve	Cammeray Park
Bradfield Park	Sawmillers Reserve	Carradah Park
Brennan Park	Watt Park	
Fred Hutley Reserve		

Installation of outdoor fitness equipment in Anderson Park is scheduled to be delivered in two stages by the end of 2022.

## **3.2. Anderson Park Sportsfield Reconstruction and Lighting Upgrade**

**AUTHOR:** David Manson, Manager Parks & Reserves

**ENDORSED BY:** Rob Emerson, Director Open Space and Environmental Services

**ATTACHMENTS:**

1. 2245- I-200- Rev C-01 IRRIGATION [**3.2.1** - 1 page]
2. 2245- I-200- Rev C-02 DRAINAGE [**3.2.2** - 1 page]

**PURPOSE:**

To present information on the Anderson Park Sportsfield Reconstruction and Lighting Upgrade

**EXECUTIVE SUMMARY:**

This report presents information on the Anderson Park Sportsfield Reconstruction and Lighting Upgrade. In particular the detail on the following

- New lighting
- Drainage
- Irrigation and
- Surface reconstruction

**FINANCIAL IMPLICATIONS:**

Grant funding of \$782,062.50 has been provided through a successful grant application.

North Sydney Council will provide the additional funding of \$260,687.50 through capital works reserves

**RECOMMENDATION:**

1. **THAT** the report be received

## LINK TO COMMUNITY STRATEGIC PLAN

The relationship with the Community Strategic Plan is as follows:

### 1. Our Living Environment

#### 1.4 Public open space and recreation facilities and services meet community needs

## BACKGROUND

A combined significant area Plan of Management/Masterplan was prepared for Anderson Park in response to a resolution made at the Council meeting on 18 April 2016. The new PoM/Masterplan for Anderson Park was completed in February 2019.

The Plan of Management listed key issues identified in relation to Sport and Recreation. The issues listed below relate specifically to the Stage 2 Sportsfield Relocation and Upgrade

**Park Maintenance** - The sportsfield is highly susceptible to wear due to its use levels (in winter) and the limitations of its soil, drainage, and water table regime. The PoM/Masterplan looks at strategies to improve soil conditions, to provide subsoil drainage, to upgrade irrigation systems and to investigate whether a different turf type would be most effective.

**Park Furniture and Lighting** - Both pedestrian and sportsfield lighting were identified as issues to be addressed in future. Better lighting at Park entrances and along the path across the foreshore is needed, and, when the playing field is 'shifted' west, away from the foreshore, the sportsfield lighting may require modification.

**Organised Sports** - The main issue of concern is the poor condition of the sports field in winter, and proposals in the PoM/Masterplan relate to how this can be rectified by upgrading the subsoil, drainage and irrigation, by investigating more appropriate turf species and by using the field for less than the maximum 32 hours a week. The PoM/Masterplan notes that Council has introduced reduced hours per week of field use in winter in an effort to reduce sportsfield wear and tear.

## CONSULTATION REQUIREMENTS

Community engagement will be undertaken in accordance with Council's Community Engagement Protocol.

## DETAIL

Council staff have spent significant time working on the detailed specification for both the Sportsfield Lighting upgrade and the Sportsfield reconstruction projects at Anderson Park. Both projects tender processes have now been completed and will be assessed in the coming weeks. It is envisaged that both tender evaluations will be reported to the May Council meeting in the hope of awarding the contracts in June 2022

Both contacts are expected to begin at the end of this current Winter season (September 2022). Due to this Council will need to close Anderson throughout the Summer season from September 2022 to April 2023. This allows the new turf to establish properly through the better growing conditions ready for the harsh high impact (winter) season.

The main hirers of Anderson Park during the summer period are schools as follows

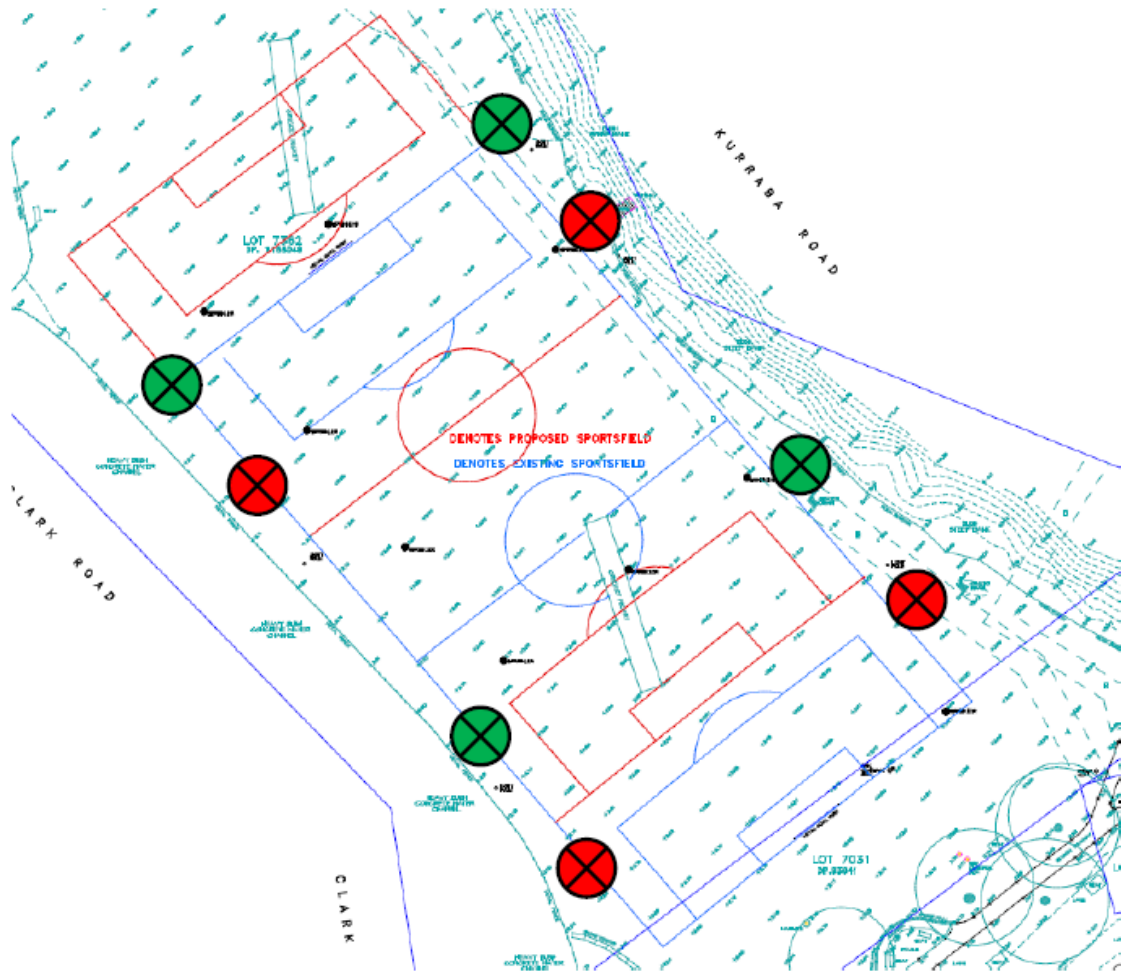
- St Aloysius Junior School– Hour's average 15 per week utilizing both Cricket pitches and the Practice Net. Used in the afternoons during the week 3.15-4.30pm. Also selected Saturdays through the season for all day use
- Loretto - – Hour's average 12.5 per week utilizing both Cricket pitches. Used in the mornings during the week 6.45-8.00am.
- North Sydney Boys - Hour's average 5.5 per week each Wednesday utilizing both Cricket pitches 12.30-3.15pm
- Monte Sant' Angelo - Hour's average 10 per week on selected Saturdays utilizing both Cricket pitches 7.30am-12.30pm



Council will be able to accommodate some of these bookings at Forsyth Park., Primrose Park and Waverton Park however weekend bookings will prove to be difficult as all fields are fully booked through the summer season

### **Lighting Upgrade**

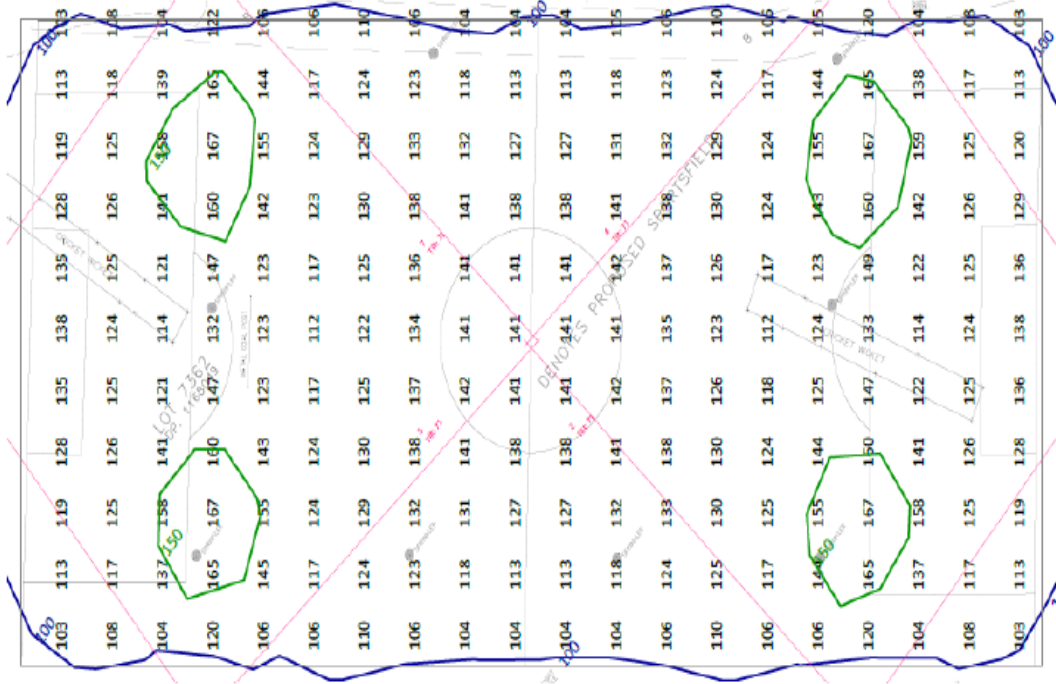
The Anderson Park PoM/Masterplan requires the Sportsfield to be relocated further West towards the Amenities block. This will require the lighting to be moved as well. The below image indicates the proposed location of the new field outlined in Red. The current field is indicated by the blue line. It also indicates the approximate location of the existing and new light locations





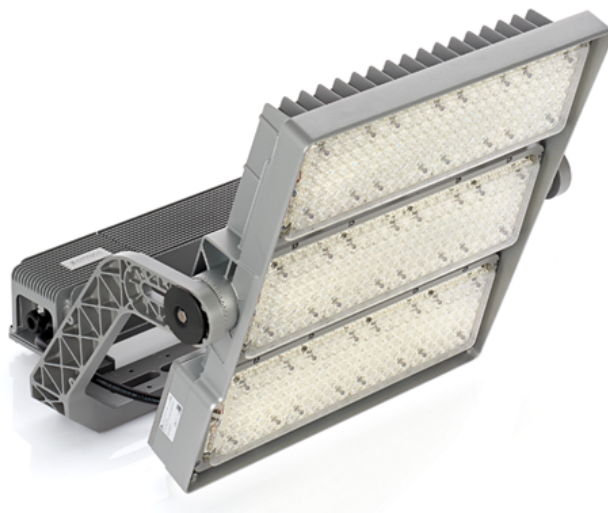
 Existing Light Locations
  New light locations

A snapshot from the lighting design below indicates the new lux levels with the installation of the 15 metre poles and new luminaires.

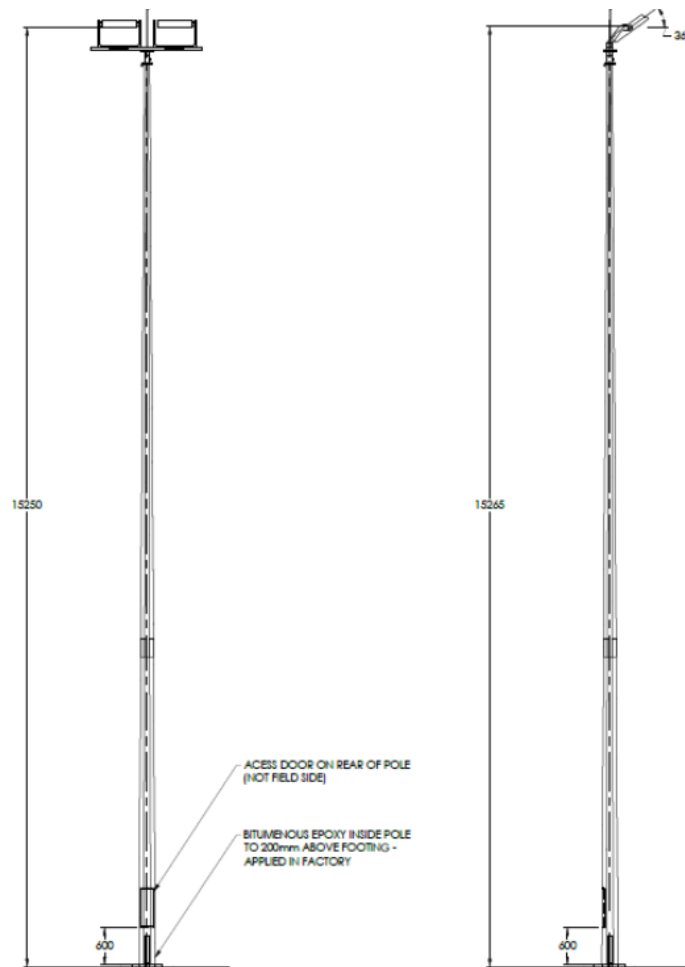


The new design has been developed to meet the current Australian Standards (AS 2560.2:2021). This standard sets the design and performance requirements for the lighting of specific outdoor and indoor sports areas.

The new lighting design will include 2 LED luminaires (OptiVision LED gen3.5) sitting a top of each 15 meter pole of which there are four (4). The Luminaires are tilted downwards to further enhance the light penetration onto the playing field and further reduce light spill. This luminaire meets the highest performance standards, provides outstanding light quality, uniformity and ensures safety and visual comfort. The wide range of optics ensure maximum optical efficiency and enables highly precise light distribution with minimum spill light



The light poles are made 3 metres smaller to limit the penetration into the Trees and improve the light onto the playing field itself. New light poles will be very similar to the existing poles being a tapered, octagonal hot dip galvanised steel pole



**Construction Process:** The method of installation will require the following process

1. Removal of existing poles, fittings, and footings.
2. Installation of new footings
3. Installation of underground reticulation
4. Supply and install new main Switchboard and property pole
5. Supply and install four (4) new 15 metre poles and light fittings
6. Cabling and connections of each
7. Testing and Commissioning

## Sportsfield Reconstruction

### Earthworks

- Spray fields 3 times prior to commencement to eliminate existing vegetation.
- Demolish & remove obsolete in ground fixtures (e.g., concrete pitch, irrigation, valve boxes).
- Cultivate ground to pulverise & blend dead & decaying turf.
- Bulk laser grade to achieve specified surface level characteristics.
- Import 750T of topsoil, spread, laser grade & cultivate (to 100mm) & consolidate. The preparation of the finished root zone requires a multistage process that includes the importation of topsoil / organic matter, physical blending by cultivation, laser grading and consolidation, before inclusion of surface soil amendments and preparation for irrigation / drainage.

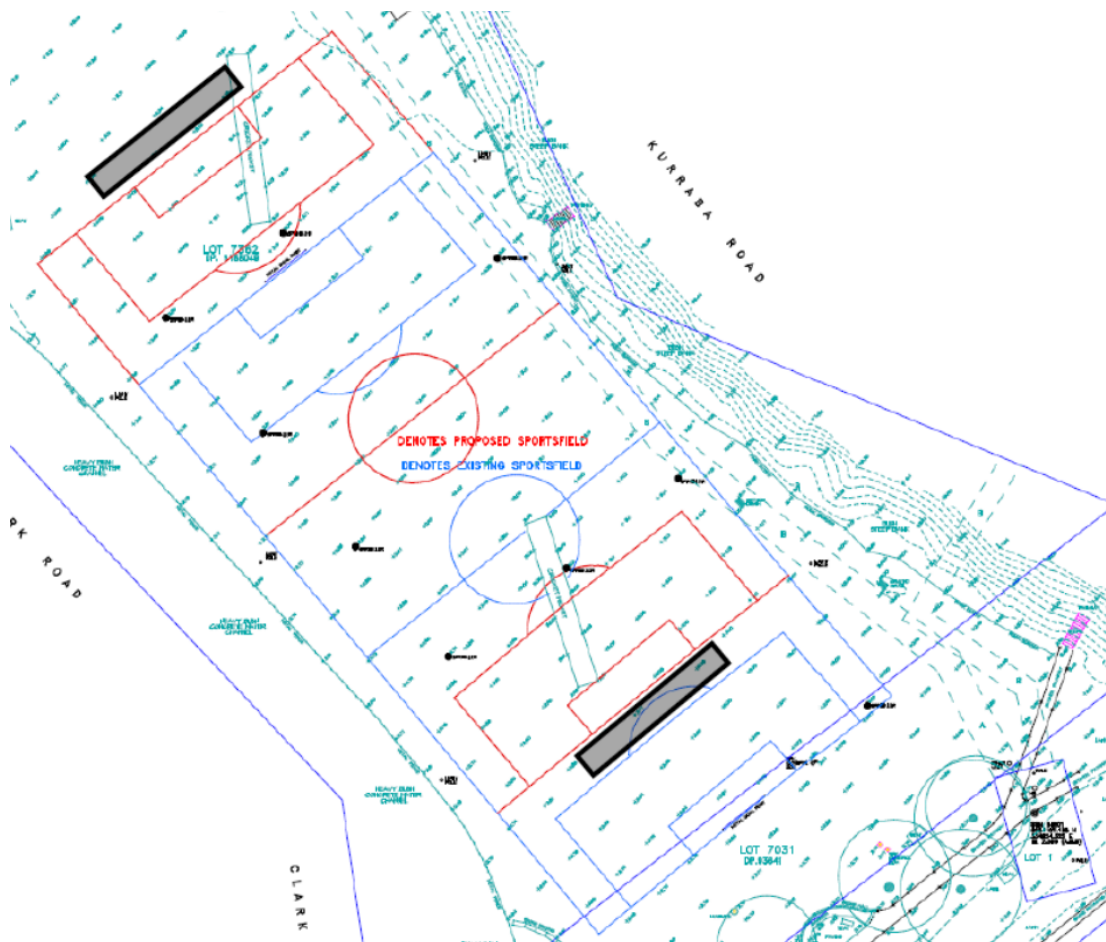
- Import another 750T of topsoil, spread, laser grade & consolidate.
- Screed to ensure final surfaces levels, consolidation, and surface smoothness.

**Install synthetic cricket wickets.**

During the grading and levelling phase, 2 x new synthetic cricket pitches will be constructed in the location & orientation prescribed by NSC and detailed in the Irrigation and Drainage plans. The synthetic pitches will blend seamlessly with finished surface levels of surrounding turf. The dimensions of the wicket shall be 28m x 2.8m. The finished surface must be laid with competition synthetic turf.

The Cricket wickets are to be relocated behind the goal mouths at each end of the football pitch. This will remove the need for any pitch covering to be undertaken during the Winter season.

The diagram below shows the location of the existing pitches in Red [red box] and the new pitches in grey [grey box]



The locations can also be seen in the attached Irrigation and Drainage plans

## **Drainage and Irrigation**

Irrigation and drainage will be installed simultaneously in the best interest of a fast and efficient project. The drainage is confined to the playing surface and 10 meters either side of the goal mouths only whilst Irrigation will be undertaken over the entire site

### **Drainage**

1. Mainline trenching will be 200mm wide to facilitate a 150mm PVC mainline. The mainline drainage trenches will be excavated at uniform grades and have a minimum of 0.5% fall. A sub-main should be installed to match the intended location of the new synthetic cricket pitches.
2. Carrier lines (laterals) will fall from the east to the west, and will be spaced 5m apart, and be 75mm in width to facilitate a 50mm agricultural pipe. This pipe will be laid on a PVC membrane to prevent siltation from underlying clay and the trench backfill must use pea gravel and sand, which is matched to produce a perched water table at their interface to prevent droughting of the trench.
3. Collector lines will be installed prior to turf establishment. These collectors will run in a north / south direction and will be spaced 3m apart, intersecting the 70mm carrier lines. These trenches will be 50mm wide and must be backfilled with pea gravel and sand.

### **Irrigation**

The new irrigation system has engaged computer modelled sprinkler performance data to improve water use and minimize any overuse. The new irrigation system is to connect downstream from the existing Potable water connection located up the embankment on the eastern side of the site. From there a completely new system is to be installed with the exception of retaining the two (2) existing foreshore turfgrass stations

Council investigated the potential to tap into the Stormwater Harvesting system at Forsyth Park and run it down to Anderson through both Council owned and Sydney Water drainage assets. This however was abandoned as was not cost effective

The new system will be hooked up to Council existing IRRInet control system

### **Turf**

After drainage and irrigation works are completed the chosen species of Turf will be laid. To best assess what variety of turf will be suited for the reconstruction the OSES sportsfields team are conducting a trial of several different cultivars of turf. They have been installed within a section of the park that is very difficult to maintain a good cover of turf. This will give the team the best chance to choose the best performing turf in the most challenging area of the park

There are 5 types of turf including

- Legend Couch
- Santa Ana Couch
- Tahoma 31 Couch
- Village Green Kikuyu and
- Kikuyu (the existing surface)

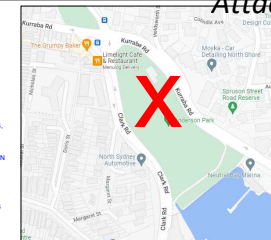


Below is a photo of the 5 types of turf when it was laid a couple of months ago



A detailed 'Turf establishment plan' as seen below will be implemented by Council. This plan is designed to protect and nurture the capital investment NSC have made in this project by establishing turf quickly, to anchor the roots and protect the sward against wear or erosion from early use.

TIMING	DESCRIPTION	COMMENTS	Kg's / Ltr REQ'	UNIT SIZE	UNITS REQ''	RATE / 100 M2
<b>SOIL INCORPORATED</b>						
PRIOR TO CULTIVATION	Aweganic Matta	Coir peat fibres for water and nutrient holding enhancement,	15,000	1000	15	100
<b>PRE-PLANT</b>						
	MatchPlay Terramaxx	Soil enhancing organics with root stimulating nutrients and water saving crystals	1,300	20	65	10
<b>TURF ESTABLISHMENT</b>						
7 days after planting	MERIDIAN	Systemic insecticide for protection against turf mites, soil borne and sap sucking insects, along with wetting agent with extra water holding capability.	2	1	2	0.013
	THUMPER		3	5	1.0	0.02
	PenMag		3	20	1.0	0.02
	SENTINEL		3	5	1.0	0.025
	MP ROOTS		78	20	4	0.6
	Contract spraying					1
	Turfstarter 14-11-8	Controlled release starter fertiliser.	325	22.7	14	2.5
<b>Mowing event 1 &amp; 2</b>						
21 days after planting	HYGRAN	Systemic insecticide for longe lived protection against turf mites along with establishment liquid fertiliser.	1	1	1	0.005
	MP ROOTS		78	20	4	0.6
	Contract spraying		3		1	
21 days after planting	Couchmaster 24-1-10	Slow release fertiliser for couch establishment	390	22.7	17	3
<b>Mowing event 3 &amp; 4</b>						
	Topdress	Smoothing and levelling	130	1	130	1
42 Days after planting	Couchmaster 24-1-10	Slow release fertiliser for couch establishment	390	22.7	17	3



**GENERAL NOTE:**

- CONTRACTOR TO VERIFY ALL DIMENSIONS ON SITE PRIOR TO COMMENCING WORK.
- CONTRACTOR SHALL BE FULLY SATISFIED WITH THE NATURE AND INTENT OF ALL WORK TO BE PERFORMED AND SHALL GUARANTEE THE DESIGN SYSTEM PERFORMANCE AND ALL DISCREPANCIES ARE FOUND AND PRIOR TO COMMENCING WORK.
- CONTRACTOR SHALL NOTIFY THE CLIENT IMMEDIATELY IN WRITING IMMEDIATELY IF ANY DISCREPANCIES ARE FOUND AND PRIOR TO COMMENCING WORK.
- THIS PLAN IS TO BE READ IN CONJUNCTION WITH OTHER LANDSCAPE, SITE AND SERVICES PLANS AS MAY BE AVAILABLE BY THE CLIENT.
- CONTRACTOR IS TO ALLOW TO COORDINATE ALL WORK WITH ANY OTHER TRADES REQUIRED.
- CONTRACTOR IS TO PROVIDE WRITTEN APPROVAL FOR ANY VARIATIONS TO BE PERFORMED.
- ALL ITEMS OF EQUIPMENT ARE INDICATIVE OF LOCATION AND SHALL BE ADJUSTED AS NECESSARY ACCORDING TO FINAL SITE CONDITIONS.

**LOCALITY SKETCH:**  
ANDERSON PARK  
KURUMBA ROAD  
NEUTRAL BAY, NSW

**CERTIFIED IRRIGATION DESIGN:**

MATTHEW WILSON

**TECHNICAL DATA:**

SYSTEM DUTY AT POINT OF CONNECTION IS TO BE 200mm @ 600kPa.

MAXIMUM TOTAL DRAIN OFF: 3.38sec

IRRIGATED AREA: ~15,000m<sup>2</sup>

DESIGNED SYSTEM PRESSURE: 600kPa.

DESIGNED SPRINKLER: RAINBIRD 8005 SS #12 NOZZLE AT SPACING TO FINAL SPRINKLER AT SPACING OF 15m X 13.75m.

DESIGNED DU: 90% CU/92%

DESIGNED SCS: 1 @ 10% OR 1.1 @ 5%

NOMINAL FINAL SYSTEM DUTY UP TO 3.31sec @ 600kPa.

NOMINAL AVERAGE SYSTEM APPLICATION RATE IS 15mm/hr.

**DIAL BEFORE YOU DIG**  
www.1100.com.au

CLIENT: NORTH SYDNEY COUNCIL

PROJECT: ANDERSON PARK NEUTRAL BAY

TITLE: PROPOSED IRRIGATION LAYOUT

CAD BY: M.W. DESIGN BY: M.W. CHECKED BY: M.W.

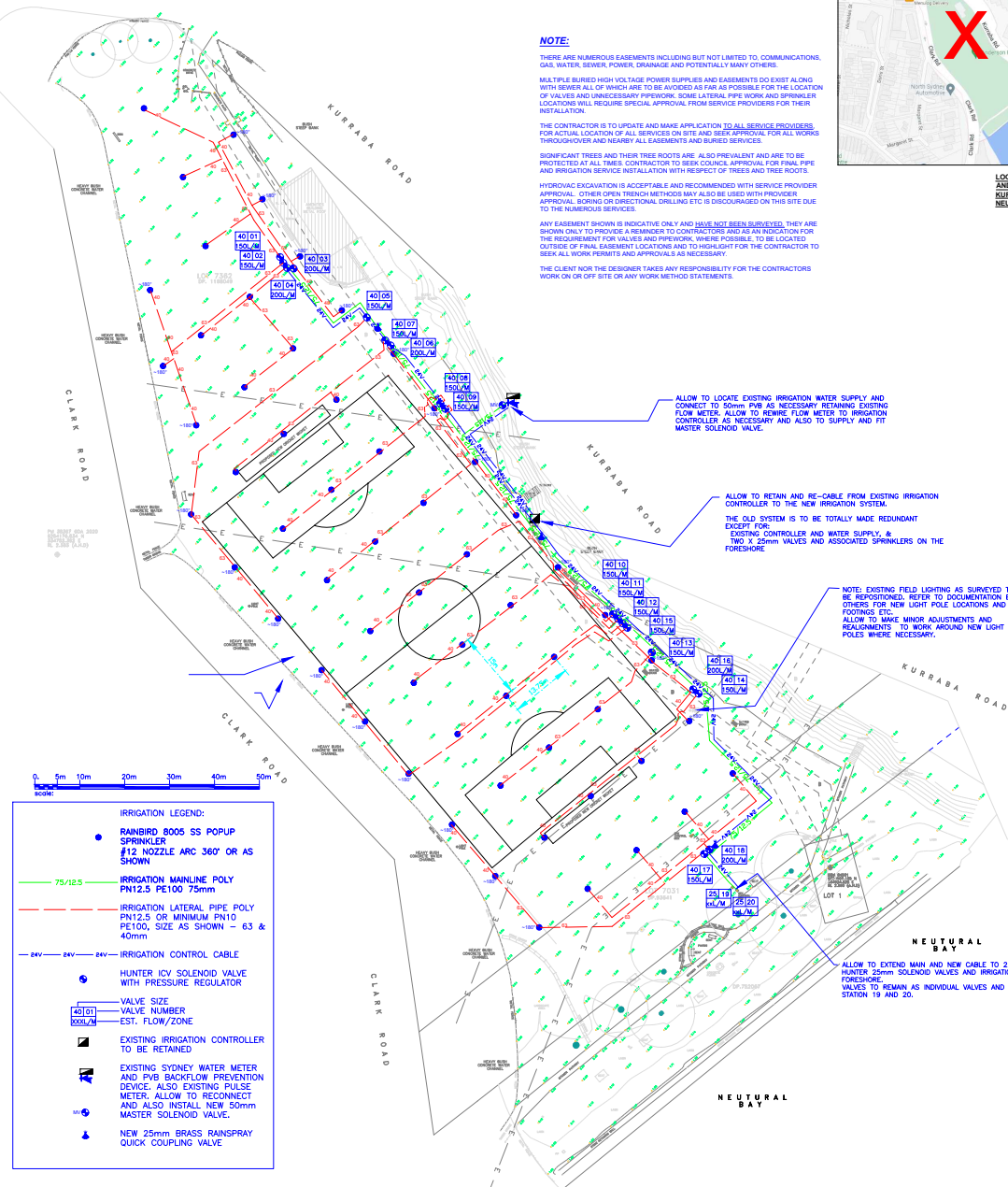
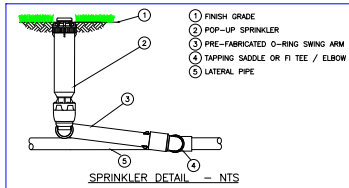
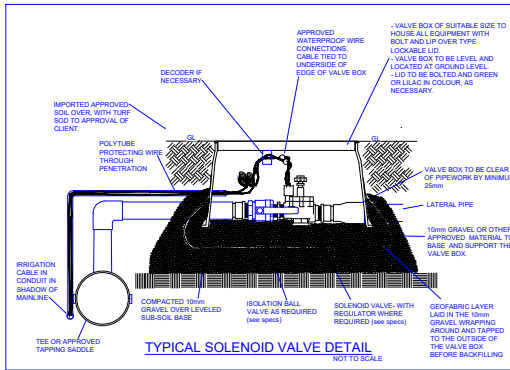
DATE: 17-09-21 DATE: 17-09-21 DATE: 17-09-21

BASE BY: CLIENT SURVEY DATE: 27-08-2021

SHEET: 01 of 03 SCALE: 1:500 @A1

DRAWING No: 2245-I-200- C REV SHEET No: -01

TOTAL IRRIGATION DESIGNERS  
P.O. BOX 183  
NORTH SYDNEY, NSW, 2254  
PH: 02 4211 3422  
WWW.NORTHSYDNEYCOUNCIL.NSW.GOV.AU



**NOTE:**

THERE ARE NUMEROUS EASEMENTS INCLUDING BUT NOT LIMITED TO, COMMUNICATIONS, GAS, WATER, SEWER, POWER, DRAINAGE AND POTENTIALLY MANY OTHERS.

MULTIPLE BURIED HIGH VOLTAGE POWER SUPPLIES AND EASEMENTS DO EXIST ALONG WITH SEWER ALL OF WHICH ARE TO BE AVOIDED AS FAR AS POSSIBLE FOR THE LOCATION OF VALVES AND UNNECESSARY PIPEWORK. SOME LATERAL PIPE WORK AND SPRINKLER LOCATIONS WILL REQUIRE SPECIAL APPROVAL FROM SERVICE PROVIDERS FOR THEIR INSTALLATION.

THE CONTRACTOR IS TO UPDATE AND MAKE APPLICATION TO ALL SERVICE PROVIDERS FOR ACTUAL LOCATION OF ALL SERVICES ON SITE AND USER APPROVAL FOR FINAL PIPE AND IRRIGATION SERVICE INSTALLATION WITH RESPECT OF TREES AND TREE ROOTS.

SIGNIFICANT TREES AND THEIR TREE ROOTS ARE ALSO PREVALENT AND ARE TO BE PROTECTED AT ALL TIMES. CONTRACTOR TO SEEK COUSCE APPROVAL FOR FINAL PIPE AND IRRIGATION SERVICE INSTALLATION WITH RESPECT OF TREES AND TREE ROOTS.

HYDROVAE EXCAVATION IS ACCEPTABLE AND RECOMMENDED WITH SERVICE PROVIDER APPROVAL. OTHER DRY TRENCH METHODS MAY ALSO BE USED WITH PROVIDER APPROVAL. BORING OR DIRECTIONAL DRILLING ETC IS DISCOURAGED ON THIS SITE DUE TO THE NUMEROUS SERVICES.

ANY EASEMENT SHOWN IS INDICATIVE ONLY AND HAVE NOT BEEN SURVEYED. THEY ARE SHOWN ONLY TO PROVIDE A REMINDER TO CONTRACTORS AND AS AN INDICATION FOR THE REQUIREMENT FOR VALVES AND PIPEWORK, WHERE POSSIBLE, TO BE LOCATED OUTSIDE OF FINAL EASEMENT LOCATIONS AND TO HIGHLIGHT FOR THE CONTRACTOR TO SEEK ALL WORK PERMITS AND APPROVALS AS NECESSARY.

THE CLIENT NOR THE DESIGNER TAKES ANY RESPONSIBILITY FOR THE CONTRACTORS WORK ON OR OFF SITE OR ANY WORK METHOD STATEMENTS.

ALLOW TO LOCATE EXISTING IRRIGATION WATER SUPPLY AND CONNECT TO 50mm PWB AS NECESSARY RETAINING EXISTING FLOW METER. ALLOW TO REWIRE FLOW METER TO IRRIGATION CONTROLLER AS NECESSARY AND ALSO TO SUPPLY AND FIT MASTER SOLENOID VALVE.

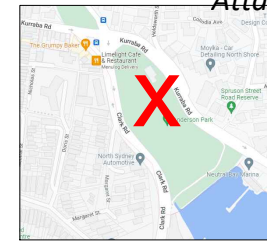
ALLOW TO RETAIN AND RE-CABLE FROM EXISTING IRRIGATION CONTROLLER TO THE NEW IRRIGATION SYSTEM.

THE OLD SYSTEM IS TO BE TOTALLY MADE REDUNDANT EXCEPT FOR: EXISTING CONTROLLER AND WATER SUPPLY, & TWO X 25mm VALVES AND ASSOCIATED SPRINKLERS IN THE FORESHORE.

NOTE: EXISTING FIELD LIGHTING AS SURVEYED TO BE REPOSITIONED. REFER TO DOCUMENTATION BY OTHERS FOR NEW LIGHT POLE LOCATIONS AND FOOTINGS ETC.

ALLOW TO MAKE MINOR ADJUSTMENTS AND REALIGNMENTS TO WORK AROUND NEW LIGHT POLES WHERE NECESSARY.

ALLOW TO EXTEND MAIN AND NEW CABLE TO 2 X EXISTING HUNTER 25mm SOLENOID VALVES AND IRRIGATION TO FORESHORE. VALVES TO REMAIN AS INDIVIDUAL VALVES AND BECOME STATION 19 AND 20.



LOCALITY SKETCH  
ANDERSON PARK  
KURURABA ROAD  
NEUTRAL BAY, NSW

GENERAL NOTE:  
 1. CONTRACTOR TO VERIFY ALL DIMENSIONS ON SITE PRIOR TO COMMENCING WORK.  
 2. THE CONTRACTOR SHALL BE FULLY SATISFIED BY THE NATURE AND INTENT OF ALL WORK TO BE PERFORMED AND SHALL GUARANTEE THE FINAL SYSTEM PERFORMANCE AND ALL WORKMANSHIP.  
 3. THE CONTRACTOR SHALL NOTIFY THE CLIENT IMMEDIATELY IF ANY DISCREPANCIES ARE FOUND AND PRIOR TO COMMENCING WORK.  
 4. THIS PLAN IS TO BE READ IN CONJUNCTION WITH OTHER LANDSCAPE, SITE AND SERVICES PLANS AS MAY BE AVAILABLE BY THE CLIENT.  
 5. THE CONTRACTOR IS TO ALLOW AND COORDINATE ALL WORK WITH ANY OTHER TRADES REQUIRED.  
 6. THE CONTRACTOR IS TO RESUBMIT WRITTEN APPROVAL FOR ANY VARIATIONS TO BE PERFORMED.  
 7. ALL ITEMS OF EQUIPMENT ARE INDICATIVE OF LOCATION AND SHALL BE ADJUSTED AS NECESSARY ACCORDING TO FINAL SITE CONDITIONS.

AS BUILT RECORDS ARE TO BE KEPT AND UPDATED DAILY. FINAL AS BUILT PLANS ARE TO BE SUPPLIED & APPROVED PRIOR TO FINAL COMPLETION.

CERTIFIED IRRIGATION DESIGN:



MATTHEW WILSON



1	17-09-2021	ISSUE FOR TENDER	NO. 1100
2	17-09-2021	ISSUE FOR TENDER	NO. 1100
3	17-09-2021	ISSUE FOR TENDER	NO. 1100

CLIENT: NORTH SYDNEY COUNCIL



PROJECT: ANDERSON PARK NEUTRAL BAY

TITLE: PROPOSED DRAINAGE LAYOUT

CAD BY: M.W. DESIGN BY: M.W. CHECKED BY: M.W.

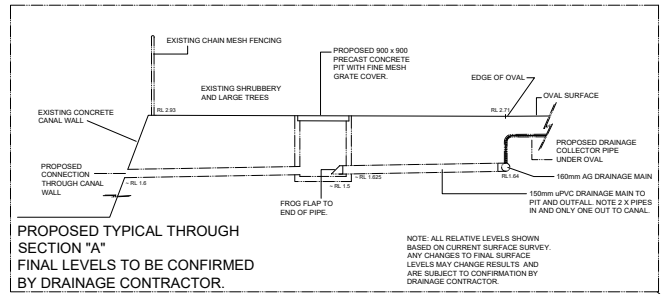
DATE: 17-09-21 DATE: 17-09-21 DATE: 17-09-21

BASE BY: CLIENT SURVEY DATE: 27-08-2021

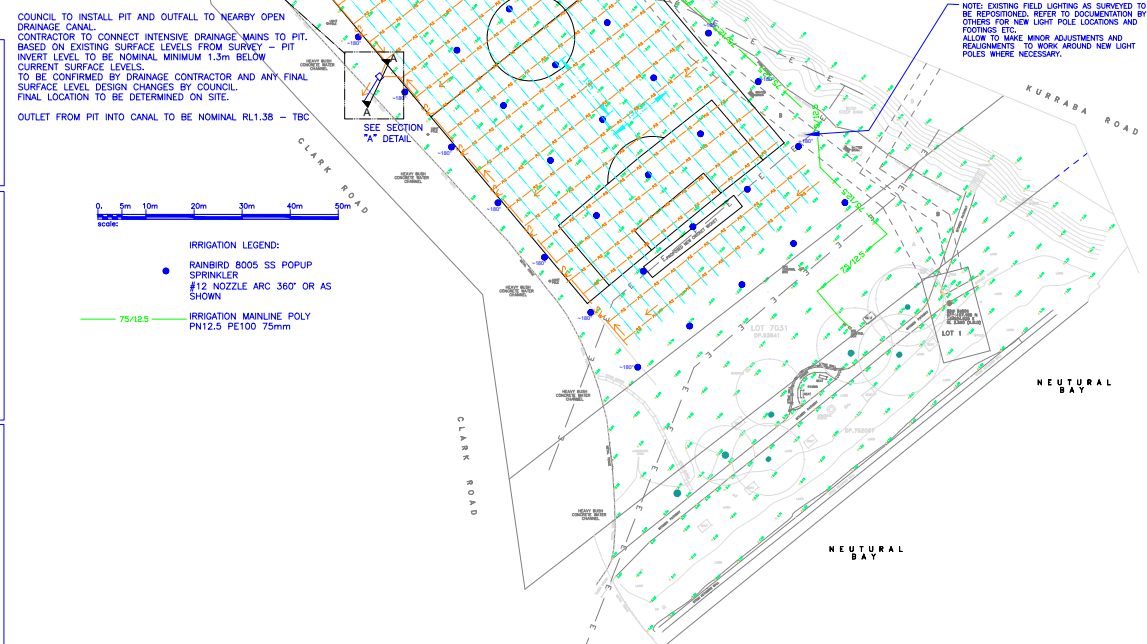
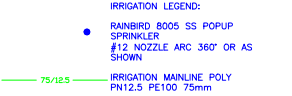
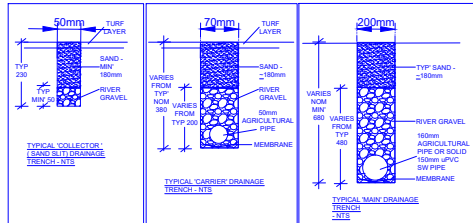
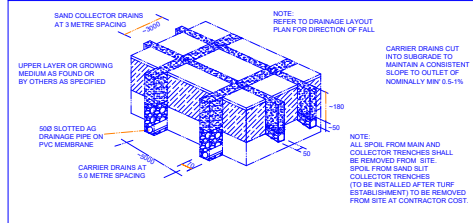
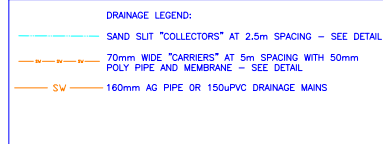
SHEET: 02 of 03 SCALE: 1:500 @A1

DRAWING No: 2245-I-200- C V SHEET No: -02

TOTAL Irrigation DESIGNERS  
 P.O. BOX 140  
 NORTH SYDNEY, NSW, 2154  
 PH. 02 4211 3442  
 WWW.TOTALIRRIGATIONDESIGNERS.COM.AU



COUNCIL TO INSTALL PIT AND OUTFALL TO NEARBY OPEN DRAINAGE CANAL.  
 CONTRACTOR TO CONNECT INTENSIVE DRAINAGE MAINS TO PIT. BASED ON EXISTING SURFACE LEVELS FROM SURVEY - PIT INVERT LEVEL TO BE NOMINAL MINIMUM 1.3m BELOW CURRENT SURFACE LEVELS.  
 TO BE CONFIRMED BY DRAINAGE CONTRACTOR AND ANY FINAL SURFACE LEVEL DESIGN CHANGES BY COUNCIL. FINAL LOCATION TO BE DETERMINED ON SITE.  
 OUTFALL FROM PIT INTO CANAL TO BE NOMINAL RL1.38 - TBC



NOTE: EXISTING FIELD LIGHTING AS SURVEYED TO BE REPOSITIONED. REFER TO DOCUMENTATION BY OTHERS FOR NEW LIGHT POLE LOCATIONS AND FOOTINGS, ETC. ALLOW TO MAKE MINOR ADJUSTMENTS AND REPOSITIONMENTS TO WORK AROUND NEW LIGHT POLES WHERE NECESSARY.

NOTE:  
 THERE ARE NUMEROUS EASEMENTS INCLUDING BUT NOT LIMITED TO, COMMUNICATIONS, GAS, WATER, SEWER, POWER, DRAINAGE AND POTENTIALLY MANY OTHERS.  
 MULTIPLE BURIED HIGH VOLTAGE POWER SUPPLIES AND EASEMENTS DO EXIST ALONG WITH SEWER. ALL OF WHICH ARE TO BE AVOIDED AS FAR AS POSSIBLE FOR THE LOCATION OF VALVES AND UNNECESSARY PREWORK. SOME LATERAL PIPE WORK AND SPRINKLER LOCATIONS WILL REQUIRE SPECIAL APPROVAL FROM SERVICE PROVIDERS FOR THEIR INSTALLATION.  
 THE CONTRACTOR IS TO UPDATE AND MAKE APPLICATION TO ALL SERVICE PROVIDERS FOR ACTUAL LOCATION OF ALL SERVICES ON SITE AND SEEK APPROVAL FOR ALL WORKS THROUGH OVERHEAD AND BURIED SERVICES.  
 SIGNIFICANT TREES AND THEIR TREE ROOTS ARE ALSO PRESENT AND ARE TO BE PROTECTED AT ALL TIMES. CONTRACTOR TO SEEK COUNCIL APPROVAL FOR FINAL PIPE AND IRRIGATION SERVICE INSTALLATION WITH RESPECT OF TREES AND TREE ROOTS.  
 HYDROVAC EXCAVATION IS ACCEPTABLE AND RECOMMENDED WITH SERVICE PROVIDER APPROVAL. OTHER OPEN TRENCH METHODS MAY ALSO BE USED WITH PROVIDER APPROVAL. BORING OR DIRECTIONAL DRILLING ETC IS DISCOURAGED ON THIS SITE DUE TO THE NUMEROUS SERVICES.  
 ANY EASEMENT SHOWN IS INDICATIVE ONLY AND HAVE NOT BEEN SURVEYED. THEY ARE SHOWN ONLY TO PROVIDE A REMINDER TO CONTRACTORS AND AS AN INDICATION FOR THE REQUIREMENT FOR VALVES AND PIPEWORK. WHERE POSSIBLE, TO BE LOCATED OUTSIDE OF FINAL EASEMENT LOCATIONS AND TO HIGHLIGHT FOR THE CONTRACTOR TO SEEK ALL WORK PERMITS AND APPROVALS AS NECESSARY.  
 THE CLIENT NOR THE DESIGNER TAKES ANY RESPONSIBILITY FOR THE CONTRACTORS WORK ON OR OFF SITE OR ANY WORK METHOD STATEMENTS.

### **3.3. Sport & Recreation Draft Future Capital Works Projects**

**AUTHOR:** Rob Emerson, Director Open Space & Environmental Services

**ENDORSED BY:** Rob Emerson, Director Open Space and Environmental Services

**ATTACHMENTS:** Nil

#### **PURPOSE:**

The purpose of this report is to provide the Sport & Recreation reference group with information regarding sport and recreation projects that are proposed for Councils consideration for funding within the organisations forward Delivery Program.

#### **EXECUTIVE SUMMARY:**

The public exhibition of the Councils Draft Community Strategic Plan and accompanying four-year Delivery Program is imminent. The Community Strategic Plan sets the direction for the Council over the next four years and the delivery program articulates amongst other things the projects that will be completed during this period. The table provided identifies projects that have been proposed to be completed within the Parks and Recreation scope.

#### **FINANCIAL IMPLICATIONS:**

The Councils Capital Works Program is developed based on Councils Resourcing Strategy, consideration and priority of competing programs and projects across Council and after the community has the opportunity to provide feedback to the elected Council for their deliberation.

#### **RECOMMENDATION:**

**1. THAT the report be received.**

## LINK TO COMMUNITY STRATEGIC PLAN

The relationship with the Community Strategic Plan is as follows:

1. Our Living Environment
- 1.3 Quality urban greenspaces
- 1.4 Public open space and recreational facilities and services meet community needs

## CONSULTATION REQUIREMENTS

Community engagement will be undertaken in accordance with Council's Community Engagement Protocol.

## DETAIL

The public exhibition (subject to Councils approval) of the Councils Draft Community Strategic Plan and accompanying four-year Delivery Program is imminent. The Community Strategic Plan sets the direction for the Council over the next four years and the delivery program articulates amongst other things the specific projects that will be completed during this period. The following table identifies projects that have been proposed to be completed within the Sport and Recreation scope.

The specific projects have generally been identified in Councils suite of Plans of Management for public open space, other adopted strategic Council documents or through a specific Council resolution.

<b>Project</b>	<b>2022/23</b>	<b>2023/24</b>	<b>2024/25</b>	<b>2025/26</b>
Hume Street Open Space Expansion Project -stage 2	990,000	-	-	-
OSSES Asset Condition Report - Remedial Work	200,000	200,000	200,000	205,000
Reintegrate the former Waverton Bowling Club site into Waverton Park	320,000	-	-	-
1 Henry Lawson Ave - Revert residential site to Parkland	1,400,000	-	-	-
Formalise path between Munro St bridge and main path leading down to foreshore in Sawmillers Reserve and associated landscape improvements	-	220,000	-	-
Anderson Park - Foreshore Access	-	-	240,000	-
Anderson Park - Small Watercraft Storage Facilities	-	-	20,000	-
Berry Island - Amenities Block Refurbishment	-	300,000	-	-



Berry Island Reserve - Outdoor Fitness Equipment	-	30,000	-	-
Bon Andrews Oval – New Irrigation System	-	100,000	-	-
Bradfield Park Central - Renew Synthetic Surface	-	100,000	-	-
Bradfield Park - Foreshore Upgrade as per Masterplan	-	-	-	2,500,000
Bradfield Park - Outdoor Fitness Equipment	-	-	30,000	-
Brennan Park - Outdoor Fitness Equipment	30,000	-	-	-
Cammeray Park - Master Planning	180,000	-	-	-
Cammeray Park - Synthetic Turf Replacement	-	-	400,000	-
Coal Loader - Additional Public Toilets	-	-	900,000	-
Dowling Street Reserve - Useability and Access Improvements	-	-	300,000	-
Dowling Street Reserve - Small Watercraft Storage Facilities and Improved Access to Foreshore	-	-	40,000	-
Forsyth Park - Install a New Cricket Wicket on Field 2	35,000	-	-	-
Grasmere Reserve - Playground Upgrade	-	-	170,000	-
Green Park (Cammeray) - Senior Playground Refurbishment	-	170,000	-	-
John Street Open Space - Small Watercraft Storage Facilities and Improved Access	-	40,000	-	-
Lady Gowrie Lookout - Restoration of Heritage Landscape and Upgrade	-	200,000	-	-
Lodge Road (Cremorne) - Playground Refurbishment	-	170,000	-	-
Milson Park - Storage Facilities for Kayaks	25,000	-	-	-
North Sydney Oval - Public Toilets Refurbishment	-	-	900,000	-
North Sydney Oval - Seat Replacement	-	-	903,000	-
Primrose Park - Additional Dual Cricket Net	-	150,000	-	-
Primrose Park - Drainage Improvements to Sportsfields	-	200,000	-	-
Primrose Park – Reconfiguration to add Additional Full-Size Playing Field	50,000	1,120,000	-	-
Prior Avenue (Cremorne Point) - Playground Refurbishment	170,000	-	-	-

Quarantine Boat Depot Site & Access Improvements	1,000,000	-	-	-
St Leonards Park - Landscape Masterplan Implementation	750,000	1,200,000	-	-
St Leonards Park - Playground Refurbishment	600,000	-	-	-
Sawmillers Reserve - Replace Step Tower	-	300,000	-	-
Tunks Park - Directional and/or Interpretive Signage	-	-	20,000	-
Tunks Park - Storage Facilities for Kayaks and Improved Access	-	60,000	-	-
Tunks Park - Turf Cricket Wicket Table Reconstruction	-	-	120,000	-
Waverton Park - Amenities Block Refurbishment	-	-	600,000	-
Various Parks - Fence Construction/Upgrade	100,000	100,000	100,000	103,000
Various Parks - Park Furniture	80,000	80,000	80,000	82,000
Various Parks - Park Signs	30,000	30,000	30,000	31,000
Various Parks - Pathway Construction	200,000	200,000	200,000	205,000

It is noted that the list of projects is often increased throughout the term of the delivery program as opportunities arise that provides third party funding for unfunded projects through State and Federal Government Grants, specific development contributions etc.

### **3.4. Capital Works Program update**

**AUTHOR:** David Manson, Parks Manager

**ENDORSED BY:** Rob Emerson, Director Open Space and Environmental Services

**ATTACHMENTS:** Nil

**PURPOSE:**

This report provides an update on sport and recreation Capital Works projects for the current financial year 2021/22

**EXECUTIVE SUMMARY:**

This report presents an update on capital works projects that are scheduled to be completed within the current financial year 2021/22

**FINANCIAL IMPLICATIONS:**

Funding for these projects is included in the adopted 2021/22 capital works budget.

**RECOMMENDATION:**

**1. THAT** The report be received

## LINK TO COMMUNITY STRATEGIC PLAN

The relationship with the Community Strategic Plan is as follows:

### 1. Our Living Environment

1.4 Public open space and recreation facilities and services meet community needs

## BACKGROUND

There are a number of sport and recreation projects that are scheduled to be completed in the current financial year. This report provides a brief update and information for the Sport and Recreation Reference on the status of these projects as of the end of April 2022.

## CONSULTATION REQUIREMENTS

Community engagement will be undertaken in accordance with Council's Community Engagement Protocol.

## DETAIL

### Projects Allocated in the 2020/21 Financial Year

#### St Leonard's Park Masterplan – Stage 3

##### Southern Lawn

This project is now underway and scheduled to be completed mid-2022. Works to be undertaken here include

- Relocation and widening the footpath
- Upgrading the lighting
- Installing w low level gardens to soften the North Sydney Oval wall
- Installing picnic/seating areas in the shade along the wall

The area of works on the Southern lawn is highlighted in picture below



## Playground Upgrade

The Masterplan includes a significant upgrade to the existing playground including expanding the play area for older children with custom equipment including bars, swings, and nets. This project is being funded by the State Government

## Coal Loader

**Irrigation System replacement** – A new overhead irrigation system replacing the dripline has been installed with Hunter prospray sprinklers. A new pressure compensated dripper system has been installed in western planter beds. All existing planting was removed, and new Lavender and Rosemary has been installed.

All Irrigation systems at the Coal Loader are also now being controlled under the IRRi net system. Council already had this system in place for all its Sports fields and selected gardens across the LGA. This system allows real time management of irrigation assets including the storage tanks, pumps, and water metres.



**Tunnel #2 resurfacing** – The surface of the main public tunnel will be resurfaced to remove any potential hazards that are currently identified. \$100,000.00 has been allocated to this project. Council is currently waiting on the outcome of a grant application for this project to commence.

**Shade system** – Installation of seven new extendable shade canopies, mounted on the colonnade which runs along the western side of the coal loader platform. This will provide 250m<sup>2</sup> of additional shade on the platform. The canopies can be opened or retracted as required and are designed to operate both automatically and manually. Automatic operation uses a wind sensor to retract when the wind is over a determined speed, in conjunction with a sunlight sensor which extends the shade out during daylight. Manual operation is via remote control. The motors for the canopies operate by solar power.





**Tunnel One - Lighting Upgrade** - The old, inefficient, and high maintenance emergency lights in Tunnel 1 at the Coal Loader have been replaced with high efficiency LED lighting. Aside from the lamps being far more energy efficient, the lights also have movement sensors to limit energy wastage when there is nobody in the vicinity



**Primrose Park Tennis Court Refurbishment** - The Primrose Park Tennis Courts Refurbishment project is continuing. Progress to date includes:

**Tennis Court Construction**

1. Site Clearance – 100% Complete
2. Disconnection of Existing Services – 100% Complete
3. Demolition of Tennis Court Infrastructure – 100% Complete

4. Earthworks – 100% Complete
5. Stormwater Drainage Installation – 100% Complete
6. Retaining Wall Construction – 100% Complete
7. Installation and Testing of Reinforced Concrete Micropiles – 100% Complete
8. Tennis Court Slab Preparation and Construction – 100% Complete
9. Electrical Services Installation – 80% Complete
- 10 Hydraulic Service Installation – 90% Complete
11. Fencing – 80% Complete
12. Lighting – 95% Complete
13. Structural Steel Seating Shelters – 50% Complete
14. Precast Paving & Sandstone Cladding – 40% Complete

#### **Club House Construction**

15. Site Clearance – 100% Complete
16. Disconnection of Existing Services – 100% Complete
- 17, Demolition of Existing Amenities – 100% Complete
18. Demolition of Partition wall – 100% Complete
19. Construction of Sub-floor – 100% complete
20. Waterproofing – 100% Complete
21. Installation of Beam – 100% Complete
22. Tiling – 100% Complete
23. Plastering & Painting – 100% Complete
24. Change facilities and Amenities – 100% complete
25. Hydraulic Services Installation - 100% Complete
26. Joinery – 100% complete
27. Electrical Services Installation – 95% complete
- 28, Floor preparation and installation – 20% Complete

Photos of site construction below



**Hume Street Park Expansion Stage One** - Construction is continuing the Hume Street Park Expansion project. Work undertaken to date includes:

- Demolition of pre-existing structures
- Propping of heritage facade
- Underpinning of adjacent buildings
- Bulk excavation including removal & replacement of unsuitable existing site fill and asbestos containing material
- Detailed excavation and trimming for concrete footings and slabs
- Installation of inground services (electrical, water, communications)
- Installation of concrete footings, slabs, and block-walling
- Structural steel installation to link canopy
- Offsite steel & metalwork fabrication (handrails, balustrading, wall paneling)
- Green wall modules (growing offsite).



**Neutral Bay Wharf Public Amenity Upgrade** - Following effective lobbying by residents and NSC, Transport for NSW (TfNSW) agreed to allow its bus driver toilet facilities at the Neutral Bay Wharf to be reconfigured by Council to provide a much-needed public toilet amenity. Construction work included demolition of internal fit-out, waterproofing of the roof structure and installation of one accessible toilet for the public and one lockable toilet for TfNSW staff members. The facility is now open for the convenience of the residents and visitors to the area.



**Cremorne Reserve Access Upgrade** - To protect fragile foreshore environment from damage caused by poor access and small watercraft storage, Council recently improved access to the harbour foreshore in Cremorne Reserve. Newly constructed timber boxed staircase provides safe and controlled access to the waterfront and the location of existing informal watercraft storage.



**Primrose Park New Foreshore Access**

A recently completed waterfront access upgrade in Primrose Park, Cammeray aims to provide a safe and easy way for the community to access the foreshore of Middle Harbour. It also provides protection of the fragile foreshore environment from damage caused by poor access and randomly stored watercraft. The new sandstone staircase fitted with safety handrails provides a controlled connection to the waterfront and the location of the watercraft storage.



Both facilities will manage the storage of watercraft on public land on the harbour foreshore in an effective and equitable manner, for the benefit of watercraft owners and for the convenience and enjoyment of those who access Cremorne Reserve for general recreation.

**Hodgsons Lookout Landscape Upgrade** - Recently completed landscape upgrade works at Hodgson Lookout aim to maintain the unique character of the park, minimise park maintenance, improve habitat and maximise the usability of the park for a range of visitors. The upgrade of the lookout provided an opportunity to remediate areas of wear and erosion, overgrown gardens and weed infestation. It addressed several safety concerns around steep slopes, improved circulation, and accessibility to ensure all North Sydney locals and visitors can safely enjoy Hodgsons Lookout.





**Smoothie Park Access and Footpath Upgrade** – Stage 2 Landscape Upgrade works, completed in the second half of December, included construction of two new sets of sandstone access stairs, installation of new wider footpaths, retaining, installation of park furniture, planting, and turfing. The improvements have been very well received by the local community as they have significantly improved safety and circulation of pedestrians in the park.



**Playgrounds** - Merret and Fred Hutley Reserve Playgrounds are receiving upgrades this year.

**Anderson Park Plan of Management Implementation** – Council has been awarded grant funding of \$782,000.00 through the Greater City Sport Facility Fund 2020/21. Further detail is provided in a separate report.

### **3.5. The Return of Hockey to North Sydney - Response to Notice of Motion**

**AUTHOR:** Robert Emerson, Director Open Space & Environmental Services

**ATTACHMENTS:** Nil

**PURPOSE:**

The purpose of this report is to provide the Reference Group with advice on potential options for supporting the sport of Hockey in the North Sydney Local Government area.

**EXECUTIVE SUMMARY:**

This report has been prepared in response to Notice of Motion No. 20/18 by Crs Keen and Mutton – Re: The Return of Hockey to North Sydney discussed at the Council Meeting held on 27 August 2018, where it was resolved (Min. No. 295):

- 1. THAT Council in principle support a hockey field in the North Sydney LGA.*
- 2. THAT Council report on the options available for hockey.*

Members of the Reference Group have requested an update on this matter. Council at its meeting on the 28 September 2020 resolved the following:

- 1. THAT the report be received.*
- 2. THAT Council continue to liaise with Hockey representatives to create opportunities to provide local training facilities.*
- 3. THAT Council further investigate the opportunity of having a dedicated natural turf facility for Hockey.*

**FINANCIAL IMPLICATIONS:**

Nil.

**RECOMMENDATION:**

- 1. THAT** the report be received.

## **LINK TO COMMUNITY STRATEGIC PLAN**

The relationship with the Community Strategic Plan is as follows:

### **4. Our Social Vitality**

#### **4.1 North Sydney is connected, inclusive, healthy and safe**

## **BACKGROUND**

At its meeting on 27 August 2018, Council considered Notice of Motion No. 20/18 by Crs Keen and Mutton – Re: The Return of Hockey to North Sydney and resolved (Min. No. 295):

- 1. THAT Council in principle support a hockey field in the North Sydney LGA.*
- 2. THAT Council report on the options available for hockey.*

## **CONSULTATION REQUIREMENTS**

Community engagement is not required.

## **DETAIL**

The first known organised hockey games were played in Australia in 1900 and there is evidence of Hockey being played in North Sydney in 1927 with the creation of a Sydney Metropolitan league represented by a number of Sydney based teams including a team from the Cremorne-North Sydney Club.

Today, Hockey has approximately 30,000 registered hockey players in regional and metropolitan areas of NSW. The player base is men, women, boys and girls ranging from five years of age in introductory programs to players aged over sixty-five in master's programs.

Historically, the game was played on natural turf but today it is predominantly played on an artificial turf surface. The transition onto artificial pitches at the elite level came during the 1970s and was made mandatory for major competitions in 1976. Since 1976 there has been a continual move to artificial turf playing surfaces for most senior grades and higher grades of junior hockey.

North Sydney District Hockey Club was a dominant hockey club in Sydney throughout the 1970s and 1980s. It was created from the merging of North Sydney Police Boys Club and Cremorne-North Sydney Hockey Club in 1953, and later including Mosman Hockey Club in 1959-60.

Their home field was Primrose Park where they also had a clubhouse within the current art exhibition space, and they enjoyed a substantial number of players and a large following within the North Sydney community at their height of success.





*North Sydney District Hockey Club playing at Primrose Park in the 1970s*

In 1991 the Gordon North Sydney Hockey Club was created from the merger of North Sydney District Hockey Club and Gordon Hockey Club, *“as North Sydney wasn't getting appraisal or help from the local council towards a future commitment to club infrastructure like a potential artificial turf field and declining player numbers, whereas Gordon had the newly built Ku-ring-gai Hockey Centre with increasing player numbers but still yet to crack the top Men's and Women's grades”* Gordon North Sydney Hockey Club website 2020.

The current Mosman Hockey Club was formed in 1992, fielding women's teams in the Northern Suburbs Grass Competition. Since then the Senior teams have moved to artificial turf pitches competitions on the North Shore playing and practicing primarily at Homebush, Concord, Lidcombe, Bankstown, and Pennant Hills hockey facilities.

In 2009 the club began a Mosman Junior program which has become extremely popular, with the Club fielding several Junior teams in the grass and artificial turf pitches winter competitions as well as indoor hockey teams. Mosman Hockey Club use several facilities across Sydney including natural grass fields within North Sydney. Hockey is also played competitively within North Sydney by students from Loreto Kirribilli using the Council grass facilities at Forsyth Park. On average 25 hours per week of hockey is played on North Sydney's grass fields during the winter season.

The primary objective for Hockey to support their sustainable existence within our community and further promote the development and growth of the sport is gaining access to a designated artificial turf Hockey pitch within the local area.

North Sydney Council undertook Recreational Needs Studies in 2005 and 2015 both studies identified the following strategies to be pursued:

*3.5 Maintain a diversity of sports and recreation activities in the LGA.*

*8.1.5 Provide an additional synthetic field in North Sydney – as a priority, suitable for sports including hockey.*

*8.5.3 Provide facilities suitable to retain a hockey competition in North Sydney.*

In response to these strategies and to work towards overcoming the demand and supply crisis for community sport within North Sydney, Council engaged a consultant to undertake a Synthetic Sports Surfaces Business Case Study, 2014 that rated the Council's existing sports fields for conversion to a synthetic sports surface based on a range of criteria. This report compared the existing sports fields and their facilities and prioritised them from most viable to least viable.

Anderson Park was rated the most viable sports field to accommodate a synthetic sports field (artificial turf) surface followed by Primrose Park, Tunks Park, Waverton Park and Forsyth Park.

Based on these findings Council prepared a Development Application for the resurfacing of Anderson Park with a synthetic sports surface that was approved by the North Sydney Independent Planning Panel in December 2015. This DA approval is still current.

In April 2016 Council resolved to suspend any works on Anderson Park until a site-specific Management Plan was produced for Anderson Park and subsequently in November 2017 Council resolved:

***THAT** Council makes a public commitment to all residents, ratepayers, friends and users of both Tunks Park and Anderson Park that artificial turf is not a matter for consideration in either park.*

The next highest ranked existing sports field based on the Synthetic Sports Surfaces Business Case Study findings is Primrose Park. However, as a similar proposal was raised for Primrose Park quite a few years ago and failed due to the local communities' concerns, it is likely the Council will again receive a negative reaction from residents living in the local vicinity of the park. It is also noted the preparation of a Development Application and associated required studies are significant in both the time it takes to prepare the documents and the costs involved.

### **Short to Medium Term Options to Assist Hockey as a Sport Within North Sydney**

If the construction of a synthetic surface hockey field is not possible in the short to medium term, Council could consider creating other opportunities that will support the playing of hockey within North Sydney until a field can be constructed either within North Sydney or in a neighbouring local government area.

This could be done through:

- Working with Hockey to create opportunities where hockey players can train locally and play small sided games on a suitable synthetic hockey surface through repurposing existing facilities e.g. disused Bowling Greens, School playgrounds and underutilised carparks.
- Work with both Mosman Hockey Club and Loretto to coordinate and restrict the playing of Hockey to one grass field within North Sydney rather than multiple fields as is currently the case. Council could then remove other high impact sports use in winter from a dedicated hockey field that would allow Council to maintain a grass surface for hockey at a significantly higher standard than can currently be provided.

### **3.6. North Sydney Olympic Pool Redevelopment Progress Report**

**AUTHOR:** John Thomson, Corporate Contracts Manager

**ENDORSED BY:** Duncan Mitchell, Director Engineering and Property Services

**ATTACHMENTS:** Nil

#### **PURPOSE:**

The purpose of this report is to provide the Reference Group with advice on the progress of the redevelopment of the North Sydney Olympic Pool.

#### **EXECUTIVE SUMMARY:**

At its meeting of 26 July 2021, Council resolved as follows:

- 1. THAT the General Manager provide a high-level update/report on the progress of the redevelopment of the North Sydney Olympic Pool to each Council meeting until the redevelopment is completed.*
- 2. THAT Council notes that this report does not alter the governance structure of the project.*

This report responds to this resolution. This report details Progress since the last Council meeting held on 28 March 2022.

Members of the Reference Group have requested an update on this matter. Council at its meeting on the 26 April 2022 resolved the following:

- 1. THAT the report be received.*

#### **FINANCIAL IMPLICATIONS:**

The financial position of the project is reported through the Quarterly Governance report which will be reported up to the Governance and Finance Committee on 9 May 2022.

#### **RECOMMENDATION:**

- 1. THAT** the report be received.

## **LINK TO COMMUNITY STRATEGIC PLAN**

The relationship with the Community Strategic Plan is as follows:

### **2. Our Built Infrastructure**

#### **2.1 Infrastructure and assets meet community needs**

## **BACKGROUND**

At its meeting of 26 July 2021, Council resolved as follows:

- 1. THAT the General Manager provide a high-level update/report on the progress of the redevelopment of the North Sydney Olympic Pool to each Council meeting until the redevelopment is completed.*
- 2. THAT Council notes that this report does not alter the governance structure of the project.*

This report responds to this resolution. This report details Progress since the last Council meeting held on 28 March 2022.

## **CONSULTATION REQUIREMENTS**

Community engagement is not required.

## **DETAIL**

### **1. Work Completed in Last Month**

Since the last Council Meeting the work has been impacted by the continuing heavy rain in Sydney and progress has been slowed as a result. In the 4 weeks to 12 April 2022 only 4 full day's work was possible due to rain or the effects of rain on the site. The construction industry also has an extended break over the Easter/Anzac Day period.

Significant works completed last month include:

- Program pool base poured.
- Mechanical plenum base and walls poured.
- Stair 3 (western end of grandstand) base poured.
- 50m pool deep end prepared ready for base slab.
- 50m pool backwash tank base and walls poured.
- Level 1 (western end) inground services commenced.
- Level 2 (crane base) inground services commenced.
- Piling rig floated to site.

Off-site works include:

- All major items of equipment are either in design finalisation or have been ordered.

## 2. Program

<b>DESCRIPTION</b>	<b>DATES/DURATIONS</b>
Date of Commencement on site	9 March 2021
Original Date for Practical Completion	14 November 2022
<b>Extensions of Time Granted (EoT)</b>	
Hazardous material removal and additional strengthening works and other issues at the beginning of the project	38 days
Inclement Weather	46 days
The industry-wide COVID-19 shutdown, inefficiencies caused by COVID-19 and a positive COVID1919 case on the site	22 days
Delays	6 days
<b>Total EoTs granted</b>	<b>112 days</b>
<b>Current Revised date for Practical Completion</b>	<b>2/5/2023</b>

## 3. Planned Activities for Next Month

Activities forecast on-site for the next month are:

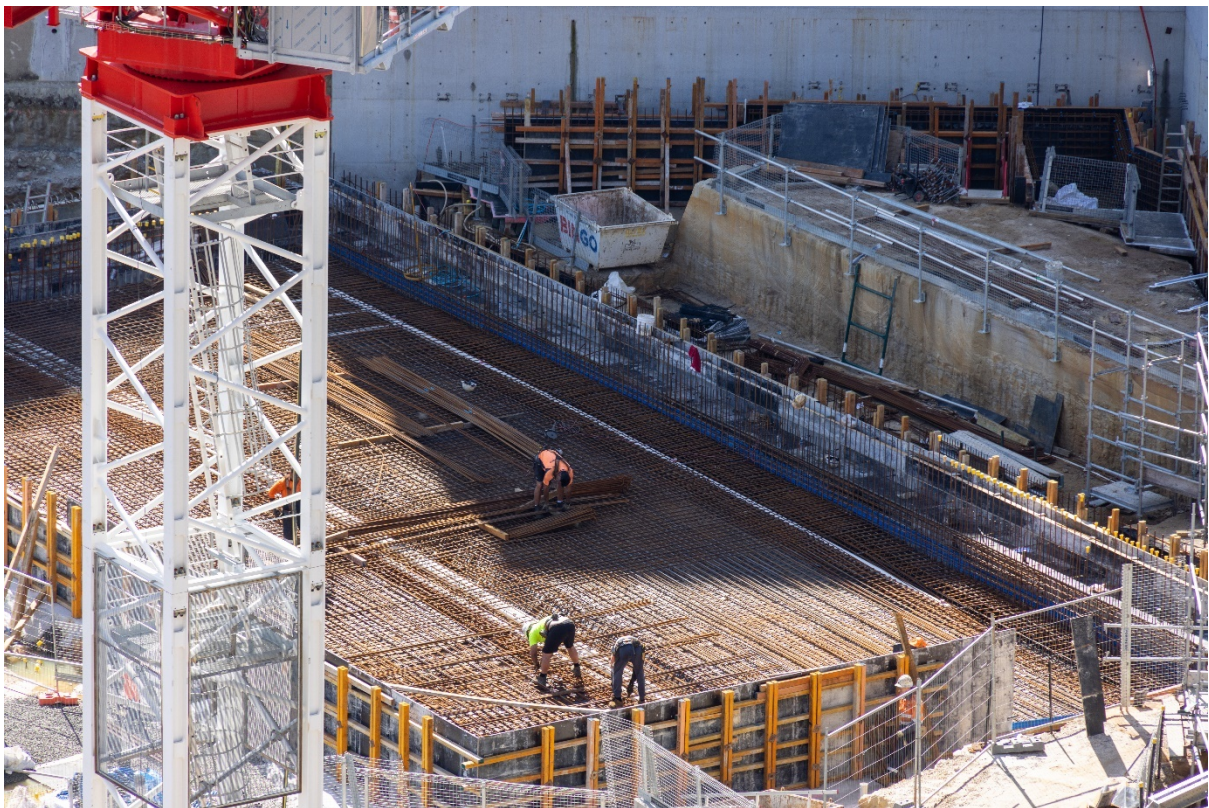
- Piling Works to commence
- Commence construction works to 50m pool, with balance tank construction.
- Inground civil works (Stormwater/grease arrestor) to be completed in the western stairs area.
- Continue detailed excavation in the leisure pool area.



#### 4. Photographs



View from the Harbour Bridge 11/4/2022



Program pool under construction 11/4/2022





The old Hopkins Park 11/4/2022



Western Stairs 11/4/2022





50m pool 11/4/2022



Lift pit and stairwell under construction 11/4/2022

### 3.7. General Business

Meeting the new Ovals Curator – Kieran Meurant

Easing Covid conditions and how are our Sporting Clubs are managing potentially the new normal?

- Mr Simon Cox would like to discuss the following:

*I would like to discuss again the use of Cammeray lights from 4.45-6.45pm in the winter season only and ideally from June until end of August this year.*

*With so much rain we are already way behind on the schedule after only 1 month of the season. On Sunday we had 2 North Sydney Womens teams playing on grounds in Hornsby Council area as there was only access to 1 grass field.*

*North Sydney is expanding in female/womens football and this is a key focus area for us. We have 6 teams who play every Sunday between 1pm and 5pm. If we can access Cammeray until 7pm we can alternate and have 3 teams playing guaranteed games each Sunday or we can include the U16 and U18 girls teams in a lunchtime game and play 2 adult games at 2.50pm and 4.45pm*

*A late Sunday game would be finished by 6.30pm with lights needed until 6.45pm to clear the field.*

*We had 2 experiments with this during our Female Football week in 2021 and am keen to know if there was any adverse feedback around noise? The women tend not to hang around after games compared to men, especially late on a Sunday.*

*Following on from the above this season has proven the worth or synthetic fields with some weeks games only proceeding on the 7 artificial surfaces across the Association. With no proven adverse effects top the environment and more eco friendly “infill” available each year do the Council have any plans moving forward to re visit a second artificial surface.*

*There are always Federal Grants available to upgrade facilities, especially where the sporting growth is primarily for females. With the Womens World Cup coming to Australia in 2023 Football NSW has already announced \$5 million is “legacy funding” to assist with improving facilities for females. An existing ground such as Primrose would be an ideal venue with no new development needed.*

- Mr Duncan Bendall would like an update on the following:

*I would ideally lie to revisit the Primrose Park sports precinct planning and the need for multiuse water Astro turfs for Hockey.*

## 4. Closure