



## **Sport and Recreation Reference Group**

**Report SR02 - 15 March 2021**

Attachments:  
Primrose Car Park lighting Poster

---

**SUBJECT:** Primrose Park Car Park Lighting

**AUTHOR:** David Manson, Manager Parks and Reserves

**ENDORSED BY:** Rob Emerson, Director Open Space and Environmental Services

### **EXECUTIVE SUMMARY:**

This report presents information on a proposal to install lighting within the Car Park at Primrose Park.

### **FINANCIAL IMPLICATIONS:**

Funding for the installation of the lights will come from Councils current minor access works budget at a cost of \$10,470.00 Ex GST.

### **RECOMMENDATION:**

**1. THAT** The report be received.

## LINK TO COMMUNITY STRATEGIC PLAN

The relationship with the Community Strategic Plan is as follows:

Direction: 1. Our Living Environment

Outcome: 1.5 Public open space, recreation facilities and services that meet community needs

## BACKGROUND

The Car Park at Primrose Park located at the end of Matora lane is currently quite uneven due to settlement and very poorly lit. There is currently one small Ausgrid streetlight that is housed on a telegraph pole just outside the Arts Centre and two others that are on poles within the Sportsfield. The two lights that are on the Sportsfield are at a low height and do not offer any light for the car park as the car park is elevated.



Report of David Manson, Manager Parks and Reserves  
Re: Primrose Park Car Park Lighting

---



The Arts Centre and Tennis club have raised some concerns about the safety of the area at night and there have been incidents of people falling and sustaining injuries due to the darkness.

To help improve the safety during the evening Council initially undertook line marking of the car park, the lines were painted with luminescent white paint as were the small tree pits and ends of the larger pits. Six *lagerstroemia Indica Biloxi* (Pink flowering Crepe Myrtle) were also planted within the smaller round tree pits.



Whilst the initial works have helped the area is still very dark in the evening especially if the sportsfield lighting is not in use.

## CONSULTATION REQUIREMENTS

Community engagement will be undertaken in accordance with Council's Community Engagement Protocol.

## SUSTAINABILITY STATEMENT

The sustainability implications are of a minor nature and did not warrant a detailed assessment.

## DETAIL

To alleviate this Council is proposing to install two double headed solar lights within the Primrose Park carpark. Lighting placement and design has been chosen for the following reasons:

1. Will result in minimum 'light-spill' outside of the carpark.
2. The lighting will be positioned 'flat' (0 degrees) meaning there will not be glare onto nearby residences.
3. The timing of lights operation will be aligned with evening use of Primrose Park Tennis Courts, Primrose Park and Primrose Park Art & Craft Centre.
4. The lighting is solar powered, in line with Council's sustainability objectives.

### PROPOSED LOCATION



### EXAMPLE OF LIGHTING



The proposal is currently out on public exhibition to attain feedback and all details can be found on Council's website under the "Your say" section of the website. Posters have also been placed on site at Primrose Park and community feedback closes on the 22<sup>nd</sup> of March 2021.

If Council receives support for the lighting installation the works will be completed in April/May.

# HAVE YOUR SAY

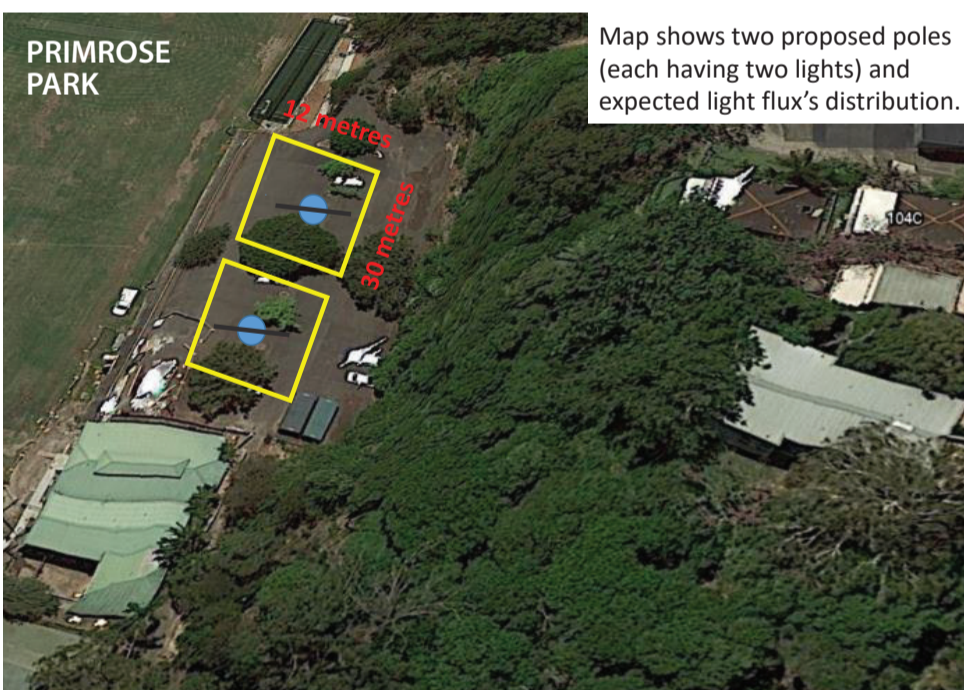


## Primrose Park carpark lighting

Council proposes to install two solar light poles (each pole having two lights) for improved safety and visibility in the Primrose Park carpark at night.

Lighting placement and design has been chosen to have minimum 'light-spill' outside of the carpark. The lighting will be positioned 'flat' (0 degrees) meaning there will not be glare onto nearby residences. There will be limited forward throw of the lighting. The timing of lights will be aligned with use of Primrose Park Tennis Courts, Primrose Park and Primrose Park Art & Craft Centre. The lighting is solar powered, in line with Council's sustainability objectives.

### PROPOSED LOCATION



### EXAMPLE OF LIGHTING



Scan the QR code or **complete the feedback form** online at [yoursay.northsydney.nsw.gov.au](https://yoursay.northsydney.nsw.gov.au):

- Email: [yoursay@northsydney.nsw.gov.au](mailto:yoursay@northsydney.nsw.gov.au)
- Mail: North Sydney Council, PO Box 12, NORTH SYDNEY NSW 2059



**Feedback closes Monday 22 March 2021**

For more information contact Council's A/Director Community and Library Services on 9936 8100.

[yoursay.northsydney.nsw.gov.au](https://yoursay.northsydney.nsw.gov.au)