



BRADFIELD PARK AND KIRRIBILLI FORESHORE MASTERPLAN

REPORT

VOLUME 1 OF 2

prepared for

North Sydney Council

by

CLOUSTON

Landscape Architects • Urban Designers • Landscape Planners

6A Wetherill Street • Leichhardt • NSW 2040

PO Box 44 • Leichhardt • NSW 2040

Telephone (02) 9569 3388 • Facsimile (02) 9569 3523

Email • clsyd@ozemail.com.au

JUNE 1998

NS 376

TABLE OF CONTENTS

	EXECUTIVE SUMMARY	
1.0	INTRODUCTION	1
2.0	PURPOSE OF THE MASTERPLAN	2
3.0	PROJECT PROCESS	3
4.0	COMMUNITY CONSULTATION	5
5.0	ISSUES AND OPPORTUNITIES	6
6.0	OBJECTIVES	8
7.0	VISION FOR THE PARK	10
8.0	MASTERPLAN CONCEPT MODELS	11
9.0	THE PREFERRED MASTERPLAN	13
	<i>APPENDICES VOLUME 2</i>	

EXECUTIVE SUMMARY

THE RESOURCE

Bradfield Park and the Kirribilli Foreshore is one of the most significant tracts of open space in the North Sydney area.

Its harbourside location and proximity to key Sydney landmarks including the Sydney Harbour Bridge makes this Park one of the most valuable visual and recreational assets in Sydney.

In recognition of its local, metropolitan and regional significance North Sydney Council commissioned the Masterplan project in 1997 as an important first step in providing a high quality landscape design for Bradfield Park and the Kirribilli Foreshore.

The Masterplan has been developed by North Sydney Council in conjunction with consultant Landscape Architects and Landscape Planners, CLOUSTON. It is based on a thorough analysis of existing site conditions, the site's harbour and urban context, Council's strategic directions and the stated needs and aspirations of local residents and other key stakeholders.

Community consultation has played an important role in the development of the Masterplan including workshops for local residents and key stakeholders, an information stall at Kirribilli Markets and on site interviews with park users. Input and feedback was invited during the key project stages of:

- Research and Analysis
- Concept Design
- Masterplan and Exhibition

Typical ideas, opportunities and issues raised during the consultation covered such topics as:

- Cultural and Natural Heritage
- Recreation, Leisure and Special Events
- Circulation and Access
- Landuse, Planning and Management
- Image and Character

THE VISION

In order to provide a conceptual framework for development of the Park key objectives were formulated and workshopped with stakeholders. These included the need to:

- recognise and balance the national and metropolitan as well as local significance of the Park
- allow for a range of informal recreational uses within the Park
- integrate all access strategies for the Park with those for major adjoining public land uses (Pool/Luna Park, etc.)
- reflect the strategic Harbourside location in the design of the Park
- establish landuses that do not impact adversely on amenity of adjoining residences and other landuses
- retain and enhance important views across the Park to the harbour and city and to the Park from the city

Workshop participants assisted the consultant team in describing the unique qualities of the site which were subsequently encapsulated in the phrase 'City Playground / Harbour Stage'. This vision will provide a sustained focus and image for the project.



THE PREFERRED MASTERPLAN

The preferred Masterplan is based on feedback on three concept models presented at concept review workshops as well as refinement of the Plan required to meet site planning constraints.

Principal features of the preferred Masterplan, which was placed on public exhibition are:

Redesign of *Park entries* and orientation points including creation of a major gateway in the north-west Park corner.

Redesign of the north/west area of the Park, north of Burton Street, to improve amenity, robustness, links to Kirribilli Centre and to accommodate the existing monthly markets. The area will feature grass and gravel spaces and a consolidation of the existing *tree canopy*.

Redefinition of the station *palm forecourt* improving pedestrian movement to and from the station and enhancing the address to the station entrance.

Reorganisation of the Bowling Club area to provide one bowling green in conjunction with the creation of a *new civic space* providing a link to Kirribilli centre. Redevelopment of the club house to provide a public refreshment facility while incorporating and improving existing Clubhouse functions.

Strengthening of links to Kirribilli Centre through Burton Street tunnel and via Fitzroy Street including *paved threshold treatments* to improve pedestrian safety.

Creation of a series of large scale *grassed terraces* formed by imported fill and topsoil formed over the existing grass slope. The terraces respond to the architectural scale and form of the Bridge pylons, define spaces for different recreation and leisure activities and help to resolve the problems of soil erosion and also lead in the soil.

Construction of *amphitheatre* style informal and special events seating near the North Pylon and adjoining the tunnel vent providing views oriented across the Harbour to Circular Quay, the Rocks and the Opera House.

Provision of temporary events support and *visitor facilities* of robust design integrated into the Park landscape.

Upgrading of the Jeffery Street *ferry wharf* area incorporating steps to the water's edge.

Redesign of the Harbour foreshore at Milson's Point including feature planting and pavement design to improve address to the Harbour and to achieve a dynamic *shared pedestrian and vehicle esplanade*.

Improvement of pedestrian connections along the foreshore and between major *transport and recreation foci*.

Accentuation of the Broughton Street vista to Circular Quay and the Opera House through selective tree planting to frame the vista and termination of the vista with a lookout point perhaps featuring *kinetic art works* above the tunnel vents.

Restoration of the natural character along the Kirribilli Foreshore including conservation of *native foreshore vegetation* and natural landform and safe low-key pedestrian access.

Sensitive treatment of *heritage and archaeological features* such as sandstone walling and pools.

Enhancement of foreshore and through-Park pedestrian links picking up on existing desire lines and including *improved disabled access*.

Local area traffic planning improvements aimed at minimising traffic impacts on local residents including limiting Park landtake for public and private vehicular parking and optimising access to *public transport* services and links from land and water.

The Masterplan also proposes innovative *interpretation* of the site's cultural and natural heritage values as well as its historically significant features. Interpretation may include use of artworks and will form part of the redesign of primary foreshore paths and orientation points, telling the rich story of Bradfield Park.

FINAL MASTERPLAN (JUNE 98)

The majority of feedback received from the public exhibition was extremely supportive of the Masterplan's principal features. A number of minor refinements were made in order to finalise the Masterplan. It should be noted that recommendations for the Bowling Club site have been identified as a long term option only and will not be implemented whilst the Club is viable.

REALISATION

It is recognised that while development of the Park must be seen as a comprehensive proposal, the financial resources of Council may necessitate a staged development programme. Council's attraction of State and Federal funding as well as joint initiatives with adjoining landowners will have a role in realising the potential of Bradfield Park and Kirribilli Foreshore.

1.0 INTRODUCTION

The Bradfield Park and Kirribilli Foreshore Masterplan has been prepared by North Sydney Council in conjunction with CLOUSTON Landscape Architects and in consultation with the community. It is based on a thorough analysis of existing site conditions, the Park's harbour and urban context, Council's strategic directions and the stated needs and aspirations of key stakeholders.

The Parkland is perceived as an integral part of the local and regional recreational and visual landscape and provides for a diverse range of recreational and aesthetic needs. For that reason, community involvement has played an important role in the development of the Masterplan.

The Masterplan phase has spanned approximately six months culminating in a public exhibition in February 1998 (refer to Appendices for Summary of Public Submissions).

PLANNING CONTEXT

Bradfield Park and the Kirribilli Foreshore are situated in the suburbs of Milson's Point and Kirribilli. Together these two parks form an almost unbroken line along the foreshore.

Located beneath the Sydney Harbour Bridge pylons Bradfield Park is North Sydney's most high profile Park. Adjacent to recreation facilities such as Luna Park and the North Sydney Olympic Pool and hosting the Kirribilli Markets this open space area is a popular local and visitor recreation venue.

At the time of preparing the Masterplan a number of significant initiatives in the immediate area were in varying states of progress.

- Luna Park redevelopment in concept stage
- North Sydney Olympic Pool redevelopment commencing
- Harbour Bridge North maintenance works in progress
- Kirribilli Village Study in progress
- Sea wall restoration in progress
- High-rise office and residential development in progress

All of these matters have bearing on the Park's future and require ongoing co-ordination.



2.0 PURPOSE OF THE MASTERPLAN

Bradfield Park and the Kirribilli Foreshore is one of the most significant tracts of open space in the North Sydney area.

Its harbourside location and proximity to key Sydney landmarks including the Sydney Harbour Bridge makes this Park one of the most valuable visual and recreational assets in Sydney.

In recognition of its local, metropolitan and regional significance North Sydney Council commissioned the Masterplan project in 1997 as an important first step in providing a high quality landscape design for Bradfield Park and the Kirribilli Foreshore.

The Masterplan for Bradfield Park and the Kirribilli Foreshore reflects North Sydney Council's objectives to:

- *Provide a high quality recreation facility for all*
- *Reflect the site's significance and Harbour setting through appropriate design*
- *Emphasise the physical and visual links in and around the area's wider recreational assets*
- *Upgrade the aesthetic standard of the whole area*
- *Encourage a wider appreciation of the site's historic significance*
- *Satisfy the expectations of the diverse range of park stakeholder groups*



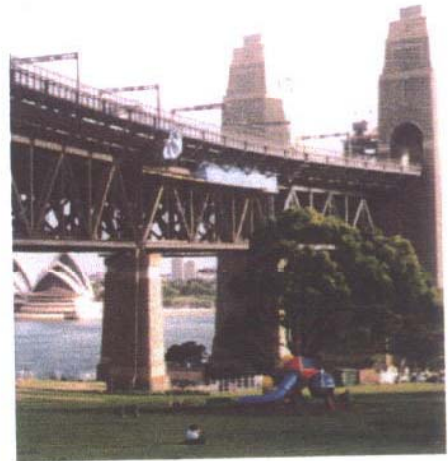
3.0 PROJECT PROCESS

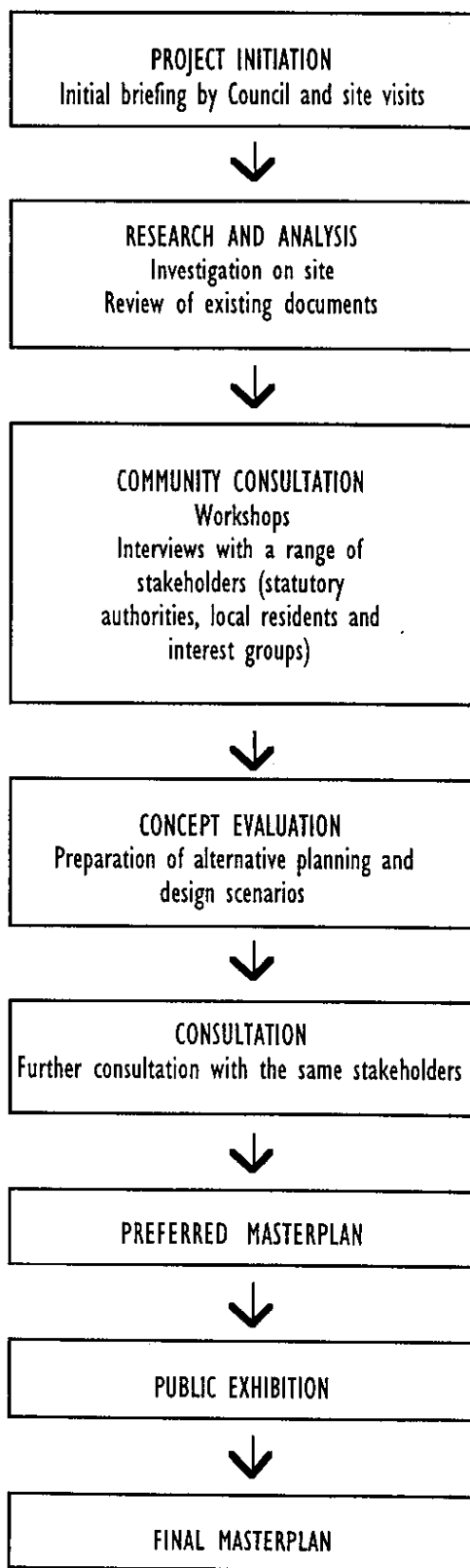
To arrive at the Final Masterplan a comprehensive process of investigation, analysis and consultation was employed.

The research phase for the project involved gathering, and where necessary updating, existing base information in the form of reports and survey material from Council as well as following up on suggested references and mapping from libraries and public agencies such as the Department of Land and Water Conservation (DLWC), the Roads and Traffic Authority (RTA), State Rail Authority (SRA) and the Sydney Harbour Tunnel Authority.

The results of this research and analysis were tested and augmented with feedback from each of the stakeholder consultation forums.

This study process is illustrated in the following diagram.





4.0 COMMUNITY CONSULTATION

The consultation programme aimed at achieving a comprehensive coverage throughout the project. The consultation strategy involved a combination of means to gather the widest possible stakeholder comment and feedback at three key project stages namely:

- Research and Analysis
- Concept Design
- Masterplan and Exhibition

A number of opportunities were provided to engage local residents, other Park users and interested stakeholders during preparation of the Masterplan. These included:

- stakeholder workshops
- on-site interviews
- written communication with statutory bodies
- flier letter box drop
- media promotion
- market stall
- newsletter

Details of invitees / participants are provided in the supporting Appendices document.

PUBLIC LAUNCH AND EXHIBITION

The preferred Bradfield Park and Kirribilli Foreshore Masterplan was placed on exhibition for six weeks between 13 February and 25 March 1998 following a public launch on 12 February. The closing date for submissions was 27 March 1998. The closing date was extended for approximately two weeks due to requests from the community

Written submissions were invited from the public in general and from key stakeholders from organisations who had attended workshops as part of the project (refer Volume 2 for Summary of Public Submissions).



5.0 ISSUES AND OPPORTUNITIES

Some of the ideas, opportunities and issues raised in the workshops with stakeholders and through analysis of background research material are included below and include the need to:

CULTURAL AND NATURAL HERITAGE

- Reflect the 30's Harbour bridge construction era
- Design in sympathy with older features
- Retain history and undeveloped edge along Kirribilli foreshore
- Use ephemeral sculptures and site related elements
- Recognise heritage and conservation values of the bridge

RECREATION AND LEISURE

- Maintain opportunities for casual and unstructured recreational uses of the Park
- Resolve conflict between other Park users and schools
- Maintain all organisational requirements of markets
- Maintain lower Broughton Street as a viewing point during events and by tourist coaches
- Provide robust Park design for special events
- Enhance use of Milson's Point for ceremonies eg. wedding photos

CIRCULATION AND ACCESS

- Simplify public and private traffic circulation and parking
- Ensure any new road/circulation arrangements do not change transport operational requirements
- Improve land and water based public and private transport connections
- Address multi-access points through path design
- Improve pedestrian safety along Broughton Street
- Enhance popularity of foreshore walking and jogging circuit

LANDUSE, PLANNING AND MANAGEMENT

- Review use of existing bowling club and market sites
- Consider possible provision of kiosk in Luna Park or Olympic Pool
- Consider site constraints resulting from infrastructure
- Recognise high community value of Kirribilli markets but address visual impacts and parking congestion
- Consider implications of Luna Park redevelopment to the Parks future.



IMAGE AND CHARACTER

- Enhance views to and from the Park
- Enhance visual relief provided by grassed surfaces and green space
- Minimise tree planting on foreshore for views
- Enhance visual axis down Broughton Street
- Reduce visual impacts of vehicles
- Reduce visual impact of rubbish/litter along foreshore
- Minimalist approach to design / reduce visual clutter



6.0 OBJECTIVES

The following objectives were tested with stakeholders during the consultation process and were used as a framework for development of the three concept models. They are set out under the five heads of consideration.

CULTURAL AND NATURAL HERITAGE

- To recognise and balance the national as well as local significance of the Park
- To ensure that the local cultural and social values of the Park are integrated in its design
- To recognise, conserve and interpret the natural and cultural heritage of the Park
- To integrate the Harbour Bridge as a central element in the Park

RECREATION, LEISURE AND SPECIAL EVENTS

- To allow for a range of unstructured recreational uses within the Park
- To enhance the popularity of the foreshore path between Lavender Bay and Kirribilli foreshore
- To accommodate youth and informal school recreation in the Park without compromise to the amenity of other Park users
- To accommodate for the peak use for special events with minimum infrastructure

CIRCULATION AND ACCESS

- To integrate all access strategies for the Park with those for major adjoining public land uses (Pool/Luna Park, etc.)
- To place a higher priority on public and collective transport and cycle access to the Park over private transport
- To achieve safe and convenient pedestrian access to and within the Park
- To optimise waterborne public transport links to the Park
- To encourage links between the Park and Kirribilli commercial area

LANDUSE, PLANNING AND MANAGEMENT

- To ensure landuses achieve the goals of highest and best public use
- To establish landuses that do not impact adversely on amenity of adjoining landuses
- To ensure that the Park is readily maintainable within existing Council resources (including for special events)
- To ensure public transport access is efficient and at minimum loss to park amenity

IMAGE AND CHARACTER

- To reflect the strategic Harbourside location in the design of the Park
- To recognise and integrate the diverse landscape characters of the Park
- To retain and enhance important views across the Park to the harbour and city and to the Park from the city
- To use planting as a means of complementing the Park's special qualities
- To integrate artworks and existing historic elements to enhance the Park's character

7.0 A VISION FOR THE PARK

Workshop participants assisted the consultant team in developing the following vision statement incorporating keywords describing the unique qualities of the site.

This engaging parkland and foreshore landscape will always reflect the values of the local community, while providing a unique image of Sydney to the world.

Its image will balance the visual serenity of its natural assets, with the awe inspiring scenery of towering bridge on green canvas, city alight in the dusk, energy of our harbour artery.

With the harbour and city on its stage, the parkland will be a theatre for all people, with a show everyone can share, and promise memories for generations to come.

This vision will provide a sustained focus and image for the project and is encapsulated in the key words:

'City Playground / Harbour Stage'.



8.0 MASTERPLAN CONCEPT MODELS

In developing the preferred Masterplan three alternative concept models were first developed. These were termed:

- elementary
- intermediate
- comprehensive

The three models provide a gradation in the scope of proposed development as well as incorporating different strategies for particular areas of the site. Key variations in the three models are described in a north to south chronology below:

ELEMENTARY

This model largely seeks to make low-key improvements with minimal disturbance to the existing Park layout or new infrastructure. Key elements include:

- markets relocated from north-west area of the Park to an agreed location outside the study area
- Bowling Club site remains in its present form
- regrading and upgrading of the sloping grass area under the bridge with existing pedestrian movement essentially unchanged
- Olympic Drive redesigned to create a shared traffic and pedestrian zone
- bus layover along Broughton Street and Alfred Streets promoted as an alternative to existing layover in Olympic Drive

INTERMEDIATE MODEL

This model provides a greater level of improvement to the existing landscape including modification of some existing landuses. Key elements include:

- markets accommodated in current location with a redesign of this space incorporating hard and soft ground surfaces
- Bowling Club site partially redeveloped in the medium term ie reduced to one bowling green providing improved public use of and access through the site
- the existing Club house redeveloped to provide community facilities such as a refreshment facility and incorporating an improved Bowling clubhouse
- the grassed area under the bridge terraced defining spaces for different activities
- pedestrian movement defined by the terraces
- buses directed across the Park on a new road on a pre-Bridge alignment extending westward from Pitt Street

- all vehicles excluded from the foreshore to create a shared pedestrian and cycle esplanade
- bus layover located on the new road running east-west across the Park and Alfred Street

COMPREHENSIVE MODEL

This model provides the greatest level of improvement to the Park maximising opportunities provided by the Masterplanning process. Key elements include:

- markets relocated to redeveloped Bowling Club site and the Burton Street tunnel area
- Bowling Club relocated to another site outside the study area in the medium to long term allowing creation of a large civic space with views to the Harbour
- shops and cafes within the masonry walls of the Bridge approach on the Bowling Club site
- an option for an underground carpark under the Bowling Club site providing parking for surrounding amenities
- the grassed area under the bridge terraced as in the intermediate model but minus the new road
- Olympic Drive open to buses as a shared one-way bus/pedestrian zone

The treatment of Kirribilli Foreshore will be essentially the same in all three models and will include:

- restoration of natural character including native vegetation and landform features
- provision of safe pedestrian access picking up on existing desire lines
- conservation and interpretation of remnant foreshore elements such as stone walling and pools

9.0 THE PREFERRED MASTERPLAN

The preferred Masterplan was based on feedback on the three concept models gained at the concept review workshops as well as further refinement of the Plan required to meet site planning constraints. The preferred Masterplan was placed on public exhibition to invite feedback and comment. It incorporates elements and aspects derived from the three models previously described.

Principal features of the preferred Masterplan are:

Redesign of *Park entries* and orientation points including creation of a major gateway in the north-west Park corner north of Burton Street.

Redesign of the north/west area of the Park, north of Burton Street, to improve amenity, robustness and to accommodate the existing monthly markets. The area will feature grass and gravel spaces and a consolidation of the existing *tree canopy*.

Redefinition of the station *palm forecourt* improving pedestrian movement to and from the station and enhancing the address to the station entrance.

Reorganisation of the Bowling Club area to provide one bowling green in conjunction with the creation of a *new civic space* providing a link to Kirribilli centre. Redevelopment of the club house to provide a public refreshment facility while incorporating and improving existing Clubhouse functions.

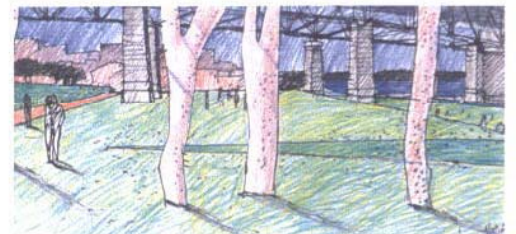
Strengthening of links to Kirribilli Centre through Burton Street tunnel and via Fitzroy Street including *paved threshold treatments* to improve pedestrian safety.

Creation of a series of large-scale *grassed terraces* formed by imported fill and topsoil formed over the existing grass slope. The terraces respond to the architectural scale and form of the Bridge pylons, define spaces for different recreation and leisure activities and help to resolve the problems of soil erosion and lead in the soil.

Construction of *amphitheatre* style informal and special events seating near the North Pylon and adjoining the tunnel vent, providing views oriented across the Harbour to Circular Quay, the Rocks and the Opera House.

Provision of temporary events support and *visitor facilities* of robust design integrated into the Park landscape.

Upgrading of the Jeffery Street *ferry wharf* area incorporating steps to the water's edge.



Redesign of the Harbour foreshore at Milson's Point including feature planting and pavement design to improve address to the Harbour and to achieve a dynamic *shared pedestrian and vehicle esplanade*.

Improvement of pedestrian connections along the foreshore and between major *transport and recreation foci*.

Accentuation of the Broughton Street vista to Circular Quay and the Opera House through selective tree planting to frame the vista and termination of the vista with a lookout point perhaps featuring *kinetic art works* above the tunnel vents.

Restoration of the natural character along the Kirribilli Foreshore including conservation of *native foreshore vegetation* and natural landform and safe low-key pedestrian access.

Sensitive treatment of *heritage and archaeological features* such as sandstone walling and pools.

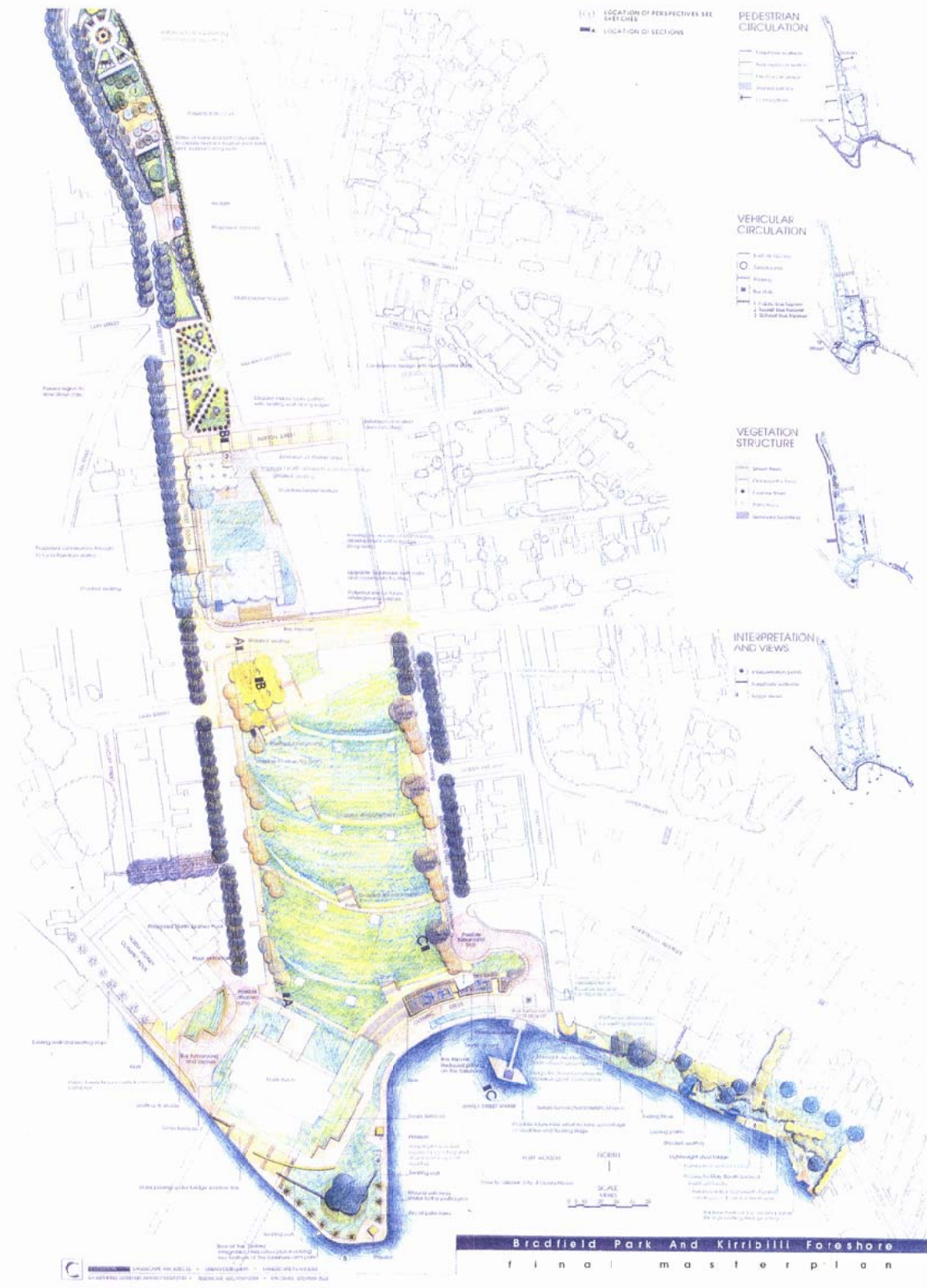
Enhancement of foreshore and through-Park pedestrian links picking up on existing desire lines and including *improved disabled access*.

Local area traffic planning improvements aimed at minimising traffic impacts on local residents including limiting Park landtake for public and private vehicular parking and optimising access to *public transport services* and links from land and water.

The Masterplan also proposes innovative *interpretation* of the site's cultural and natural heritage values as well as its historically significant features. Interpretation may include use of artworks and will form part of the redesign of primary foreshore paths and orientation points, telling the rich story of Bradfield Park.

FINAL MASTERPLAN (JUNE 98)

The majority of feedback received from the public exhibition was extremely supportive of the Masterplan's principal features. A number of minor refinements were made in order to finalise the Masterplan (refer Summary of Public Submissions Appendices Vol 2). It should be noted that recommendations for the Bowling Club site have been identified as a long term option only and will not be implemented whilst the Club is viable.





TYPICAL DESIGN CHARACTER

The landscape architecture is the primary focus of the design process and the design team has worked closely with the client to ensure that the design is both functional and aesthetically pleasing. The design team has also worked closely with the client to ensure that the design is both functional and aesthetically pleasing.

The design team has also worked closely with the client to ensure that the design is both functional and aesthetically pleasing. The design team has also worked closely with the client to ensure that the design is both functional and aesthetically pleasing.

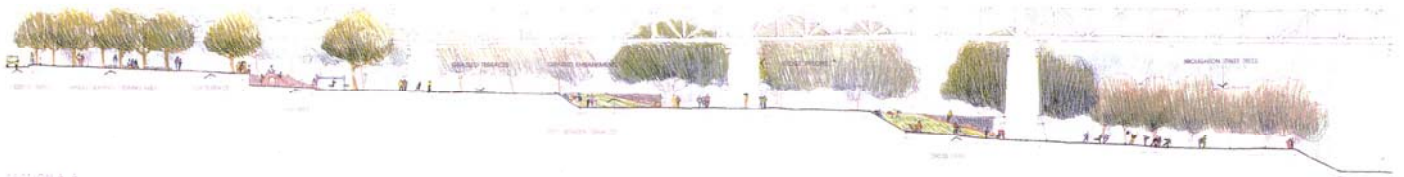
The design team has also worked closely with the client to ensure that the design is both functional and aesthetically pleasing. The design team has also worked closely with the client to ensure that the design is both functional and aesthetically pleasing.



View 201
View along Kirribilli Foreshore looking back to the Harbour Bridge



View 202
View along Kirribilli Foreshore looking back to the Harbour Bridge



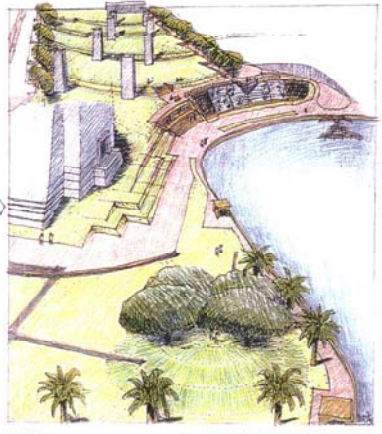
SECTION A-A

UNIVERSITY OF WOLLONGONG
SCHOOL OF ARCHITECTURE
100 WOLLONGONG AVENUE
WOLLONGONG NSW 2522
TEL: 02 8251 5000
WWW.UOW.AU

Bradfield Park And Kirribilli Foreshore
f i n a l m a s t e r p l a n



View One
view through parkland with proposed market stalls



View Four
looking from north at new footbridge, amphitheatre and open bar area



View Two
view through colonnade looking across bridge



View Three
view through colonnade looking across park



SECTION A-B



SECTION C-D

Bradfield Park And Kirribilli Foreshore
f i n a l m a s t e r p l a n

ALCOCK ARCHITECTS
100/102 Pitt Street Sydney NSW 2000
Tel: (02) 9231 1111 Fax: (02) 9231 1112
www.alcock.com.au



BRADFIELD PARK AND KIRRIBILLI FORESHORE MASTERPLAN

APPENDICES

VOLUME 2 OF 2

prepared for

North Sydney Council

by

CLOUSTON

Landscape Architects • Urban Designers • Landscape Planners

6A Wetherill Street • Leichhardt • NSW 2040

PO Box 44 • Leichhardt • NSW 2040

Telephone (02) 9569 3388 • Facsimile (02) 9569 3523

Email • clsyd@ozemail.com.au

JUNE 1998

NS 376

TABLE OF CONTENTS

VOLUME 1 REPORT (SEE SEPARATE DOCUMENT)

VOLUME 2 APPENDICES (THIS VOLUME)

SUMMARY OF PUBLIC SUBMISSIONS

EXHIBITION PANELS

LAUNCH HANDOUT: MASTERPLAN SUMMARY

NEWSLETTER

POSTERS / FLIERS

MEDIA RELEASES PROJECT LAUNCH
EXHIBITION LAUNCH

WORKSHOP ATTENDEES

WORKSHOP AGENDAS

EXHIBITION LAUNCH AGENDA

MEMORANDUM BRADFIELD PRECINCT 20.5.98

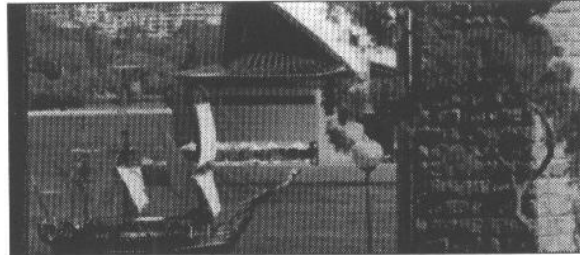
ANALYSIS PLANS

THREE MODEL PLANS

CONSULTATION RECORD / PHONE

ON-SITE QUESTIONNAIRE EXAMPLE

BUS MOVEMENT SURVEY: OLYMPIC DRIVE



**BRADFIELD PARK AND
KIRIBILLI FORESHORE MASTERPLAN**



CLOUSTON

**SUMMARY OF PUBLIC SUBMISSIONS
May 1998**



BRADFIELD PARK AND KIRIBILLI FORESHORE MASTERPLAN

SUMMARY OF PUBLIC SUBMISSIONS

prepared for

North Sydney Council

by

CLOUSTON

Landscape Architects • Urban Designers • Landscape Planners

6A Wetherill Street • Leichhardt • NSW 2040

PO Box 44 • Leichhardt • NSW 2040

Telephone (02) 9569 3388 • Facsimile (02) 9569 3523

Email • clsyd@ozemail.com.au

MAY 1998

NS 376

1.0 INTRODUCTION

The Draft Bradfield Park and Kirribilli Foreshore Masterplan was placed on exhibition for six weeks between 13 February and 26 March 1998 following a public launch on 12 February. The closing date for submissions was 27 March 1998.

Written submissions were invited from the public in general and from key stakeholders. The format for submissions was contained in a brief questionnaire.

1.1 SUBMISSIONS RECEIVED

50 submissions were received as a result of public exhibition not including accompanying documentation.

1.2 COMPILATION OF SUBMISSIONS

The written submissions received, either returned questionnaires or in letter form, are summarised under the key subject headings used during the masterplanning process. These are:

- Natural and Cultural Heritage
- Recreation, Tourism and Leisure
- Access and Circulation
- Landuse, Planning and Management
- Image and Quality

These are broken down further into issue sub-headings.

1.3 TABLE OF SUBMISSIONS

The table of submissions on the following pages is a summary of comments contained in written submissions received by the receipt of submissions closing date. Supporting, opposing and general comments are numbered and an action column shows implications of the comments for finalising the Masterplan.

Issues	Supporting Comment	No.	Opposing Comment	No.	General Comment	No.	Action
natural and cultural heritage							
Mary Booth Reserve	Break in hedge supported But need to show existing rotunda. Use upper lawn as walk- through. Check label - no trees or shrubs. Retain <i>Plumbago</i> sp. -no need to change - provides lookout as long as it is clipped. otherwise dangerous for children. through	2	Do not reduce trees/shrubs. Perfect views as is. The value of the Reserve is the balance between intimate aspects and spectacular views.	1	Show rotunda Provide plaque.	1 1	Show rotunda on plan. Amend label. Address plaque locations at detailed design stage.
Kirribilli Foreshore							
<i>Sandstone walls</i>	Plan respects	1					
<i>Planting</i>	Retention of important vegetation and restoration of 'secluded' planting character applauded. Oppose removal of any of the existing Ficus below Mary Booth Reserve. Wants more planting along Kirribilli than shown. Trees give depth and frame views.	6			Native Vegetation Study submitted with comment includes: • suggested species • revegetation techniques • Figs >100yrs old Keep trees low. No structures. Suggestion to replace large Oleanders near huge fig previously removed with other flowering species to define space	1	No change. Masterplan shows intended character and function. Intention is to reinforce native character of Kirribilli foreshore. 1 Resolve at design detail stage.
<i>Land up to cliff-line Lots 63-65</i>	Glad to see no fence shown	1			Should be accessible to public and be treated as one garden	1	No change.

Issues	Supporting Comment	No.	Opposing Comment	No.	General Comment	No.	Action
<i>Stone pool</i>	Suggestion for more sensitive V-shaped bridge across pool allowing water inflow. Contact for clarification provided.	1	Should be filled in. Previously agreed by residents at Council meeting. Keep open small beach for paddling. Would like to see Kirribilli pool rebuilt. Only recently become derelict.	2			Treatment shown in Masterplan follows comprehensive review of all the values of the foreshore sensitive to the archaeological importance of the pool. No change.
<i>Upper level behind stone pool</i>			Not shown or coloured Covered steps not shown. Show extent of public land	2	Unearth stone steps and create path around pool - remove straight long bridge	1	Check with NSC. Amend Masterplan to incorporate upper level.
Foreshore artificial stone balustrade			No mention made in Plan Turnaround and bridges may affect them.	1	Needs to be painted.	2	Address at detail design stage. No change.
North-end Alfred Street-'Historical Element'					National Trust- Unsure what reference to 'historical element' means	1	Change wording- label.
Treatment of heritage eg Bridge	Positive recognition of the important elements of the area	1			Need archaeological assessment of area - convict remains. Needs to be fenced to prevent objects falling into Park.	1	No change.

Issues	Supporting Comment	No.	Opposing Comment	No.	General Comment	No.	Action
recreation tourism and leisure							
Proposed Playground/Cnr Fitzroy & Alfred Sts	Needs to be fenced	1			More playgrounds	1	No change. Resolve at design detail stage.
Outdoor Eating	Outdoor cafe supported. Need for good reasonably proceed coffee shop for local visitors in area - not supplied in Kirribilli.	2					No change.
Mobile event support facilities eg vendors, toilets					Locations for motorised vendors to be included on Plan & enforced eg Mr Whippy. Need information kiosk at foreshore -could be unmanned. Joint venture - NSW Tourism, Australian Tourism commission, NSC, Stanton Library.	1 1	Investigate possible locations for integrated major event support and visitor information facilities incorporating three phase power outlets. Exact location to be resolved at design detail stage. Label Plan but do not locate.
Visitor Services eg Kiosk/Vending Machines/ Phones					Locations for vending machines eg softdrinks/film etc	1	Needs to conform to Council policy. Location will need to be fully integrated into existing structures. No change.
Existing Playground Structure			Retain existing structure	1			No change. Investigate re-use of existing structure or replacement.
Olympic Pool					Loss of grassed area	1	No change. Address in Pool design.

Issues	Supporting Comment	No.	Opposing Comment	No.	General Comment	No.	Action
Toilets/Mothers Rooms					Need for toilet under bridge-portaloo. Toilets generally.	6	Investigate possible locations for toilets if additional to those provided in new pool design are required. Structures to be fully integrated into existing framework. No change. Resolve exact location at detail design
Seating			Lack of seating.	2			No change. Resolve exact location at detail design in line with Council policy.
Water fountains					Provide numerous.	1	No change. Resolve exact location at detail design
Lighting					Sympathetic.	1	No change. Resolve exact location at detail design
Picnic tables and BBQ Facilities.					Provide.	1	No change. Resolve exact location at detail design
Recreation Use by Organised groups			Supports primary use of park for passive recreation only.	1	Better regulate of organised use to avoid conflict and impacts such as noise eg no weddings on Milson's Point no events on Sat & Sun mornings	3	No change. Intent of Masterplan is to provide a mix of recreation activities in a compatible fashion. This requires balancing opportunities and needs. Council to decide on regulatory policies if required.

Issues	Supporting Comment	No.	Opposing Comment	No.	General Comment	No.	Action
Events					Install fibre optic cable for live televising of events eg New years Eve, Olympics Contact Ric Birch Spectak.	1	No change. Resolve exact location at detail design
					Idea for regular event on foreshore every weekend -artists market - collectors fair		No change.
Parks Use by Visitors			Park should be improved for use by locals . Should not cater for visitor use eg provide more grass not less.	1			No change.
					No use by schools	1	
Markets	Good idea to extend markets into Burton Street tunnel.	1	Prefer option to relocate to Ennis Road	1	Try harder to create good market space.	1	No change. Resolve design at detail design stage.

Issues	Supporting Comment	No.	Opposing Comment	No.	General Comment	No.	Action
--------	--------------------	-----	------------------	-----	-----------------	-----	--------

access and circulation

Jeffrey Street Wharf	Pleased at upgrade.	1					No change.
Roads					Roads on Masterplan not labelled according to local naming. Replace: Pitt Street with Lower Pitt Street Lower Pitt Street with Kirribilli Ave & South Alfred Street with South Street	1	Amend labels.
					Reinstate Bligh Street?? Add on church /landmark.	1	Amend labels.
					No such street as South Street should be Alfred Street South	1	Amend labels.
Alfred Street	Needs total upgrade eg remove light posts, replace with period lamp posts/paving	1					No change.
Paths	Glad they're wider	1					No change.
Cycle access					Provide ramp access from Bridge instead of stairs	1	Add label to Plan
Steps			Bottle breaking opportunity.	1			No change.
Underground carpark	Club supports : would not disrupt Bowling facility. Scope for more within the hillside.	2					No change.

Issues	Supporting Comment	No.	Opposing Comment	No.	General Comment	No.	Action
Buses							
<i>General</i>	Supports bus layover in Fitzroy Tunnel	2	Discourage bus access and parking - no formal parking areas. Impact on views etc	1			
	Supports bus bays in Broughton Street. Needs fences to stop students going onto grass.						
<i>Public</i>	STA supports with following reservations: - No change to existing numbers using the area - No alternative sites for layover - Retain bus layover on southside Fitzroy Street - Turnaround at Jeffreys St Wharf cannot accommodate layover as well - radius needs to be 19m Retain use of park by school children waiting for buses	1	Wants buses and cars removed from foreshore for pedestrians All buses down South and Alfred Streets on commercial side away from residential areas. School children can walk across Park to buses. Wants buses turned around on either side of the Bridge.	4	Concerned that public buses will be taken out of Broughton Street. Lobbied hard for bus stop in Broughton Street to serve residents on eastern side of Park and for elderly . Need central and integrated bus terminus.	4	Meeting between STA and Council. Amend label to read "bus turnaround and drop-off point ' not 'layover' Check 19m radius turnaround. Amend Masterplan if required. Provision of turnaround at end of Alfred and Broughton Streets provides possibility for closing Olympic Drive to through traffic as long-term option.
	St Aloysius supports providing current bus arrangements for school children are maintained along Broughton Street	1					

Issues	Supporting Comment	No.	Opposing Comment	No.	General Comment	No.	Action
<i>Tourist Coaches</i>			Opposed to tourist bus parking Broughton Street	1	STA: Tourist coach parking needs to be catered for away from public buses - layover on Broughton Street may not be sufficient	1	No change. Masterplan intent is to remove tourist coach layover from foreshore and to keep public and tourist coach layovers separate. The intent is to limit sacrifice of parkland for bus parking. Decision to be made on tourist coaches. Options include -limiting numbers - sacrificing carparking elsewhere. To be resolved at detail design stage.
Olympic Drive	STA support with reservation needs to be wide enough to accommodate buses passing parked vehicles	2			Create a waterfront esplanade Eye catching paving Movement- people/traffic/harbour	1	Review and amend if required.
Parking			Provide parking under terraces for regional facilities for pool and Luna Park - use fill for terracing. Entry opposite Dind Street - near arch.	1			No change. Emphasis on public transport.
			Loss of parking in Burton Street Need alternative if stalls are in tunnel.	2			Loss of parking on market days to be absorbed in additional provision elsewhere.
Proposed path through Bowling Club	Needs to be more clearly defined and safe (no dead-ends)	1					No change. Sight lines and traffic management issues to be taken into account at detail design stage..

Issues	Supporting Comment	No.	Opposing Comment	No.	General Comment	No.	Action
Stairs from Bowling Club	No way to cross the street	1					Review and amend if required.
East - West Links between Park, Kirribilli and Pool			Not well developed	4			Detailed aspects of Park circulation to be resolved at detail design stage. Intent is to provide practical circulation across the Park without further dividing the Park.
			Recognise local links eg straight across Park between roads				
			Need diagonal path across Park from pool to Kirribilli				
			Axis is weak. Will lead to goat track.	1			
Links From Park To Kirribilli					Links not strong enough. Burton Street tunnel needs more than markets once a month and paving. Commercial activity under the bridge a good idea. need more.	1	No change. Resolve at detail design stage.
Links to Jeffreys Street Wharf from Broughton Street	Foreshore link to Kirribilli supported.	1	Lack of pedestrian path to the wharfs	1	Strengthen link between Kirribilli and harbour - commercial and visual.	1	No change. Resolve at detail design stage.
Broughton Street bus layovers	Seating bays unnecessary	1					No change.

Issues	Supporting Comment	No.	Opposing Comment	No.	General Comment	No.	Action
Kirribilli Foreshore footbridges	Link across Kirribilli foreshore supported.	4	Steel bridges not sensitive or strong.	5	Could be suitable but details need to be considered, handrails & steps to ensure structures are not intrusive.	1	Resolve shape of footbridges and paths along Kirribilli foreshore at detail design stage.
	Pleased that existing alignment of paths is kept Paths trodden by generations - antithesis of the western end Retain tiny scale		Too many steel bridges. One is enough. Otherwise just stone paths. Question use of steel - corrosive First footbridge (big, long, costly) dominates, covers and shadows sandstone enclosure & existing bridges Prefer meandering route. Bridge theme already there Only need to make existing paths stronger.				
Access to Mary Booth Reserve	Makes more sense of this high Park Good link to Lavender Bay	6	Stair preferred from the higher ground under the Waterhouse cliff which features a lookout and rock cut 'cross'. Even though is on private land would be more secure than as a cul-de-sac.	1	Extend links from Mary Booth Reserve to east end of Kirribilli Avenue	1	No change. Extent of public access onto private property not assured at this time.

Issues	Supporting Comment	No. Opposing Comment	No. General Comment	No. Action
--------	--------------------	----------------------	---------------------	------------

Land use planning and management

Bowling Club

Kirribilli Ex-Service Club General Manger requests meeting with Council to discuss the following:	10	Council to set up meeting with Bowling Club/RSL. No change.
Staged development to one Green not workable Impractical to run one green (12 weeks restoration required)		Masterplan illustrates retention of the Bowling Club function with redevelopment of part of the site to allow for some public access and use. The intent is to allow for highest and best use of this piece of public land given the recreation demands in the area.
Temporary use of another Club would result in loss of members		
Closure of other Clubs in North Sydney - Club willing to increase existing membership to replace closed facilities		
Club is district and regional facility - plays host to visiting bowlers from elsewhere		
Country and overseas visitors		
Club value - promotion of bowls in schools		
Club provides BBQ facility caters to 120 people		
Amalgamation of the Club - recent financial investment - landscaping etc agreed by Council		
Opposed to use of site by markets but approves of carpark underground		

Issues	Supporting Comment	No. Opposing Comment	No. General Comment	No. Action
	<p>Community services aspect of Club stressed eg charity market stall (letters of proof of donations to organisations including: NSW Police Pensioner groups Australian Army handcraft Groups Life saving groups Kirribilli Neighbourhood Centre Legacy Sporting and recreation groups St Aloysius School cadets RNS & Sydney Children's Hospitals</p> <p>Section of site leased to Vodaphone - 2005</p> <p>Exclusive use a fallacy 7000 registered RSL members</p> <p>Bowling Club access - possible for children in the company of responsible adults Membership reasonable</p> <p>Opposes loss of car parking on site - elderly and disabled</p> <p>Views to Opera House can only be achieved by removing trees</p> <p>Relocate to south of Fitzroy Street on corner use Bowling Club site for markets connect to Milson's Point</p>			<p>No action - additional carparking can be provided in Burton Street and under site</p> <p>Remove trees</p>
Construction			Regulate construction to	1 No change. Council to

Issues	Supporting Comment	No.	Opposing Comment	No.	General Comment	No.	Action
					avoid noise impacts on surrounding residential areas in particular on weekends.		enforce regulation during construction period.

Issues	Supporting Comment	No.	Opposing Comment	No.	General Comment	No.	Action
Image and quality							
Broughton Street Views			Angled planting will restrict views from houses.	2			No change.
			Trees will block views. Try tall palms as on south side of harbour.				Species, and exact location to be resolved at detailed design stage.
Articulation of spaces	More suggested - eg plaza spaces - pavilions etc	1	Further fragments the Park.	1			No change.
North-west zone			Create formal heritage garden to be viewed from above. In style of Luxembourg Gardens. Courtyard -trees and gravel.	2			Masterplan provides general pattern and use for the market space. Exact design to be resolved at detail design stage.
			Will be tidier but still lacks role.				
Station Forecourt	Bring this forward in construction.	1					No change. Phasing issue.
Foreshore vistas					Strong tree planting 'allee' a wall of planting to direct people to foreshore along Broughton and south Streets		No change.
Vent viewing area	Increase scale of viewing area above vent	1					No change
Vent kinetic artwork			Worried about noise masking desirable noise of traffic	1			No change

Issues	Supporting Comment	No.	Opposing Comment	No.	General Comment	No.	Action
Terraces	Breadth and scale in keeping with setting Facilitates school games	3	Fragments the lower portion of the park Steps will create desire lines where non exist now. Will exacerbate appropriation of area by schools.	4	Grade slope from centreline under bridge away to roads - deflect runoff away from centre of Park. Plan does not address difficulty of growing grass under the Bridge. Hard to visualise terraces. Need handrails on steep terraces. Minimise concrete - prefer grassed areas. Add playing fields. How to water and retain grass where students play?	4	Review circulation- impacts of steps etc Decide on implications of school use of terraces. A question of regulation or design? Resolve at detail design .
Amphitheatre	Monumental scale echoes the Opera House steps	2	Accentuate vent Safety hazard Target for vandals People prefer to picnic on grass terraces not concrete for special events.	2			The intent of the Masterplan is to fit the design elements into the existing context in terms of materials etc. Materials to be resolved at design detail stage. No change.
Foreshore Planting <i>General</i>	No more foreshore planting. Foreshore area is a lookout and should be tree free.		Need more trees for shade. More trees especially in front of tunnel vent.	2			No change. Exact planting layout to be resolved at design detail stage.

Issues	Supporting Comment	No.	Opposing Comment	No.	General Comment	No.	Action
<i>Palms</i>	Refreshingly clear of palm tree rows.	3	Remove palms from Milson's Point not replace. Shade is provided by the Bridge.	1	Look to south pylon for planting - needs to be the right trees and grasses		Review and amend if required.
<i>Trees under Bridge</i>			More trees under Bridge	1			
Foreshore Zone			Need water features to celebrate	1			
Planting Group - Milson's Point			Not necessary	1	Provide seating only		Review and amend if required.
Stormwater Runoff					Terraces need to survive major foot traffic and runoff from the bridge.	2	No change. To be resolved at design detail stage.
					Need stormwater/rubbish retention-water reuse system along Alfred and Broughton Streets.		
					Blocked drains - leaves and trash need to be addressed.		
Rubbish					Council needs to address aesthetic and safety problems posed by litter brought in by visitors.	4	Discuss Council policy. Resolve at detailed design stage.
					Need garbage bins.		
					Install a sink for fishermen for fish cleaning.		

Issues	Supporting Comment	No.	Opposing Comment	No.	General Comment	No.	Action
--------	--------------------	-----	------------------	-----	-----------------	-----	--------

Masterplanning Process

Consultation	Appreciate thoroughness of public consultation process	1	<p>Kirribilli Ex-Service Club claims lack of consultation re: Bowling Club with General Manager and Members of the Board.</p> <p>The Club proposes to survey its members.</p>	1			<p>General Manager was consulted as follows:</p> <ul style="list-style-type: none"> - invited to Stakeholder meeting - contacted by phone CLOUSTON - face to face interview CLOUSTON - phone and face to face consultation by North Sydney Council. <p>Board was not contacted directly. Like all other interested community members - widespread publicity and opportunity to comment.</p> <p>Council to set up meeting with General Manager as requested (Refer also Landuse , Planning and Management)</p>
Masterplan Project	Something being achieved etc. Implement quickly.	8					No change.
Exhibition Material			Not sure about photographs included. On site or elsewhere.	1			No change.
Stakeholder Rights			Not all stakeholders should have equal rights eg organised groups	2			No change.



The purpose of the Masterplan

Bradfield Park and the Kirribilli Foreshore is one of the most significant tracts of open space in the North Sydney area.

Its harbourside location and proximity to key Sydney landmarks including the Sydney Harbour Bridge makes this Park one of the most valuable visual and recreational assets in Sydney.

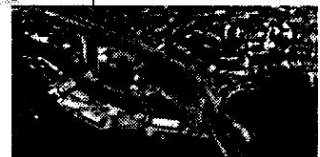
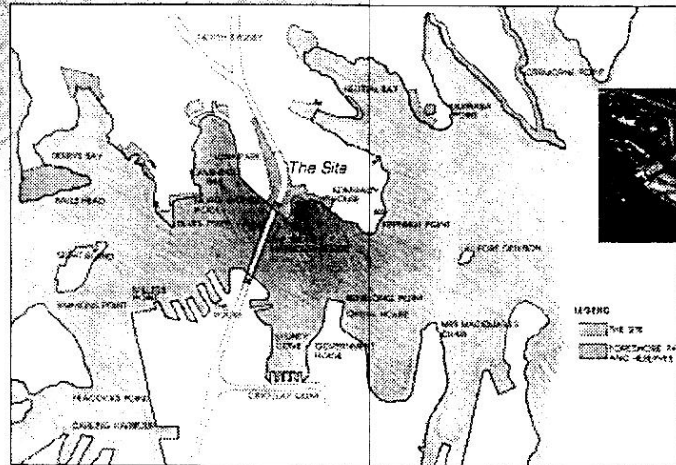
In recognition of its local and regional significance North Sydney Council commissioned the Masterplan project in 1997 as an important first step in providing a high quality landscape design for Bradfield Park and the Kirribilli Foreshore.

The importance of the Park's location

Bradfield Park and the Kirribilli Foreshore are situated in the suburbs of Milson's Point and Kirribilli. Together these two parks form an almost unbroken line along the foreshore.

Located beneath the Sydney Harbour Bridge pylons, Bradfield Park is North Sydney's most high profile Park. Adjacent to recreation facilities such as Linn Park and the North Sydney Olympic Pool and hosting the Kirribilli Markets, this open space area is a popular local and visitor recreation venue.

Importantly the Park has unparalleled views to the harbour and City.



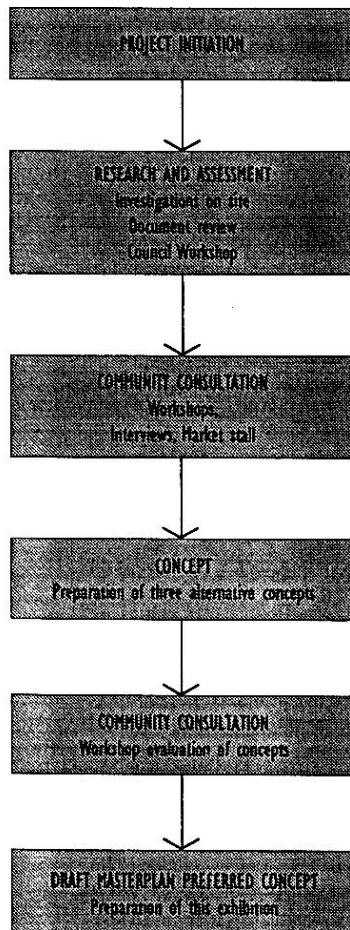
CLOUSTON LANDSCAPE ARCHITECTS • URBAN DESIGNERS • LANDSCAPE PLANNERS
84 McTHERELL STREET • PO BOX 41 • LEICHHARDT • NEW SOUTH WALES 1586 300 44 • TELEPHONE (02) 9550 3388 • FACSIMILE (02) 9550 3387

Bradfield Park and Kirribilli Foreshore
Preferred Masterplan



How the project has been run

To arrive at a preferred masterplan illustrated in this exhibition a comprehensive process of investigation, analysis and consultation was employed. This methodology is illustrated in the following diagram



Extensive Community Consultation underpins the findings of the study

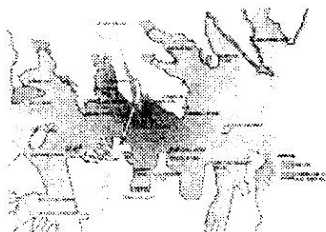




The major issues for the Park

Some of the ideas, opportunities and issues raised in the workshops with all stakeholders and through analysis of background research material are outlined below:

Kirribilli Foreshore



Peace park



Kirribilli markets



Buses on Olympic Drive

CULTURAL AND NATURAL HERITAGE

- Reflect the 30's Harbour bridge construction era
- Design in sympathy with older and historic features
- Retain history and undeveloped edge along Kirribilli foreshore
- Use ephemeral sculptures and site related elements
- Recognise heritage and conservation values of the bridge

RECREATION, LEISURE AND SPECIAL EVENTS

- Maintain Opportunities for Casual and Passive uses of the park
- Resolve conflict between other Park users and schools
- Maintain all organisational requirements of markets
- Maintain lower Broughton Street as a viewing point during events and by tourist coaches
- Maintain sense of a local park for Kirribilli residents
- Provide robust Park design for special events
- Enhance use of Milson's Point for ceremonies

CIRCULATION AND ACCESS

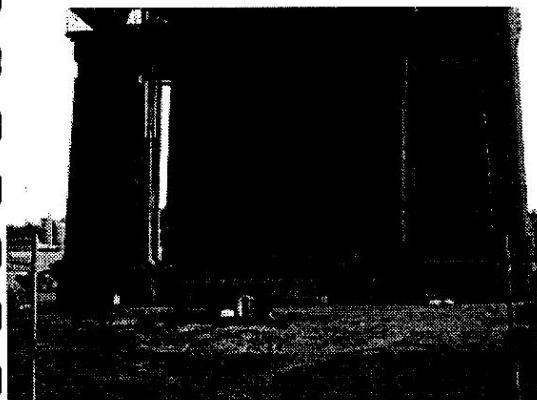
- Simplify and improve public and private traffic circulation and parking
- Address multi-access points through path design
- Improve pedestrian safety along Broughton street
- Improve land and water based public and private transport connections
- Ensure any new road/circulation arrangements do not change transport operational requirements
- Enhance popularity of foreshore walking and jogging circuit



The major issues for the Park

LANDUSE, PLANNING AND MANAGEMENT

- Consider implications of Luna Park and Swimming Pool redevelopment for Bradfield Park
- Review use of existing bowling club and market sites
- Consider possible provision of kiosk in Luna Park or Olympic Pool to serve Bradfield Park
- Consider site constraints resulting from infrastructure (harbour tunnel etc)
- Recognise high community value of Kirribilli markets but address visual and physical impacts and parking congestion



Ongoing maintenance and removal of lead from the Harbour Bridge and rehabilitation of eroded lawn areas.

IMAGE AND CHARACTER

- Enhance views to and from the Park
- Enhance visual relief provided by grassed surfaces and green space
- Minimise tree planting on foreshore for views
- Enhance visual axis down Broughton Street
- Reduce visual impact of vehicles
- Reduce visual impact of rubbish/litter along foreshore
- Minimise visual clutter



Historic remnants of the Kirribilli Pool.



Views to the City and Opera House



CLOUSTON

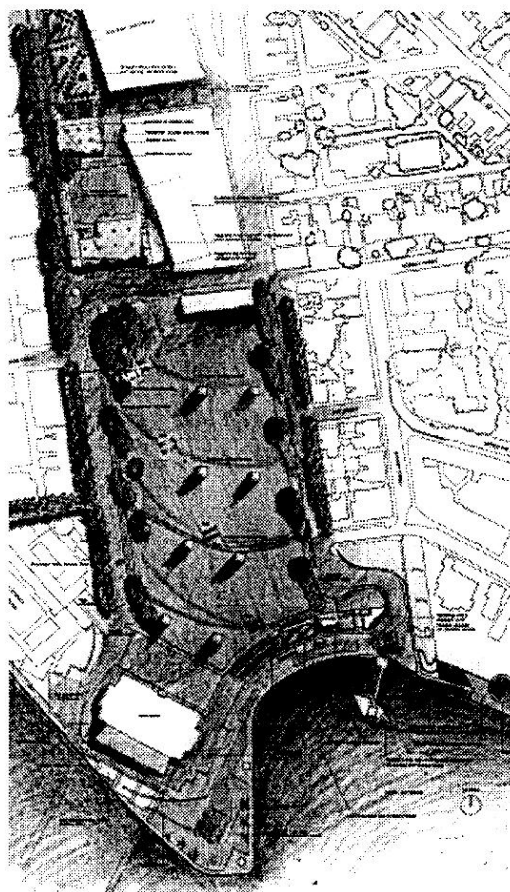
CLOUSTON LANDSCAPE ARCHITECTS • URBAN DESIGNERS • LANDSCAPE PLANNERS
8A WETHERILL STREET • PO BOX 44 • LEICHHARDT • NSW 2040 • 0011 939 6000 • TELEPHONE 9360 2288 • FACSIMILE 9360 312

Bradfield Park and Kirribilli Foreshore
Preferred Masterplan



The key objectives of the Masterplan

In order to provide a conceptual framework for development of the Parkland, key objectives were formulated and workshopped with stakeholders. These objectives include:



- *To provide a high quality recreation facility for all*
- *To reflect the site's significance and Harbour setting through appropriate design*
- *To emphasise the physical and visual links in and around the area's wider recreational assets*
- *To upgrade the aesthetic standard of the Park and adjoining streets*
- *To encourage a wider appreciation of the site's historic significance through interpretation*
- *To satisfy the expectations of the diverse range of park stakeholder groups*



Lawn terraces

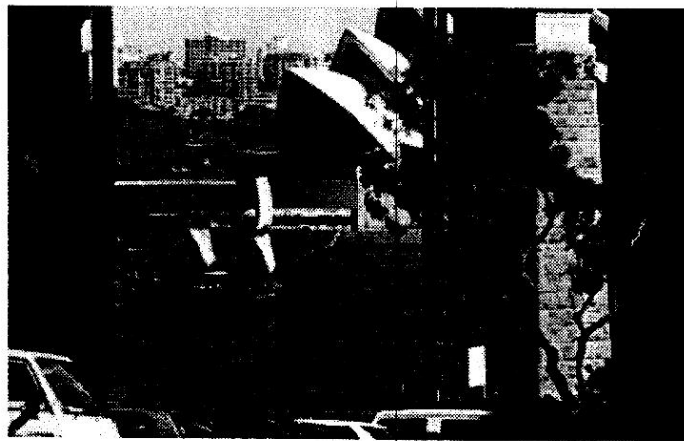




A Vision for the Park

Workshop participants assisted the consultant team in describing the unique qualities of the site through a number of key words and phrases. This vision will provide a sustained focus and image for the project and is encompassed in the phrase:

'City Playground / Harbour Stage'



CLOUSTON

CLOUSTON LANDSCAPE ARCHITECTS • URBAN DESIGNERS • LANDSCAPE PLANNERS
84 WETHERILL STREET • PO BOX 44 • LEICHHARDT • NEW 2040 • info@clouston.com.au • TELEPHONE 6160 3380 • FACSIMILE 6160 332

Bradfield Park and Kirribilli Foreshore
Preferred Masterplan



How can I comment?

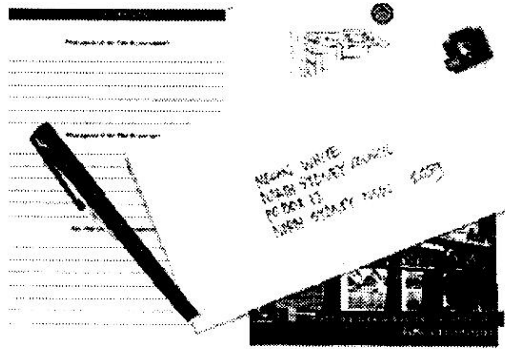
The Masterplan will be on exhibition for public viewing until 25 March 1998 at:

Stanton Library
Miller Street
North Sydney

We are seeking comments on the Draft Masterplan from anyone who may be interested. Please include any suggestions that you may wish to be considered in relation to the Draft Masterplan on the 'comments sheet' provided, or address comments to:

Megan White
North Sydney Council
PO Box 12
North Sydney NSW 2059

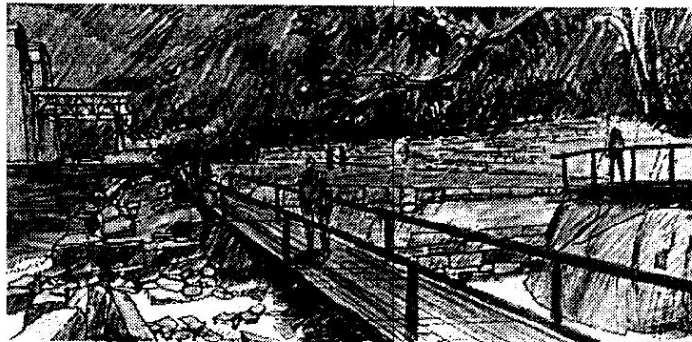
All public submissions will be considered until 27 March 1998, prior to finalising the Masterplan.

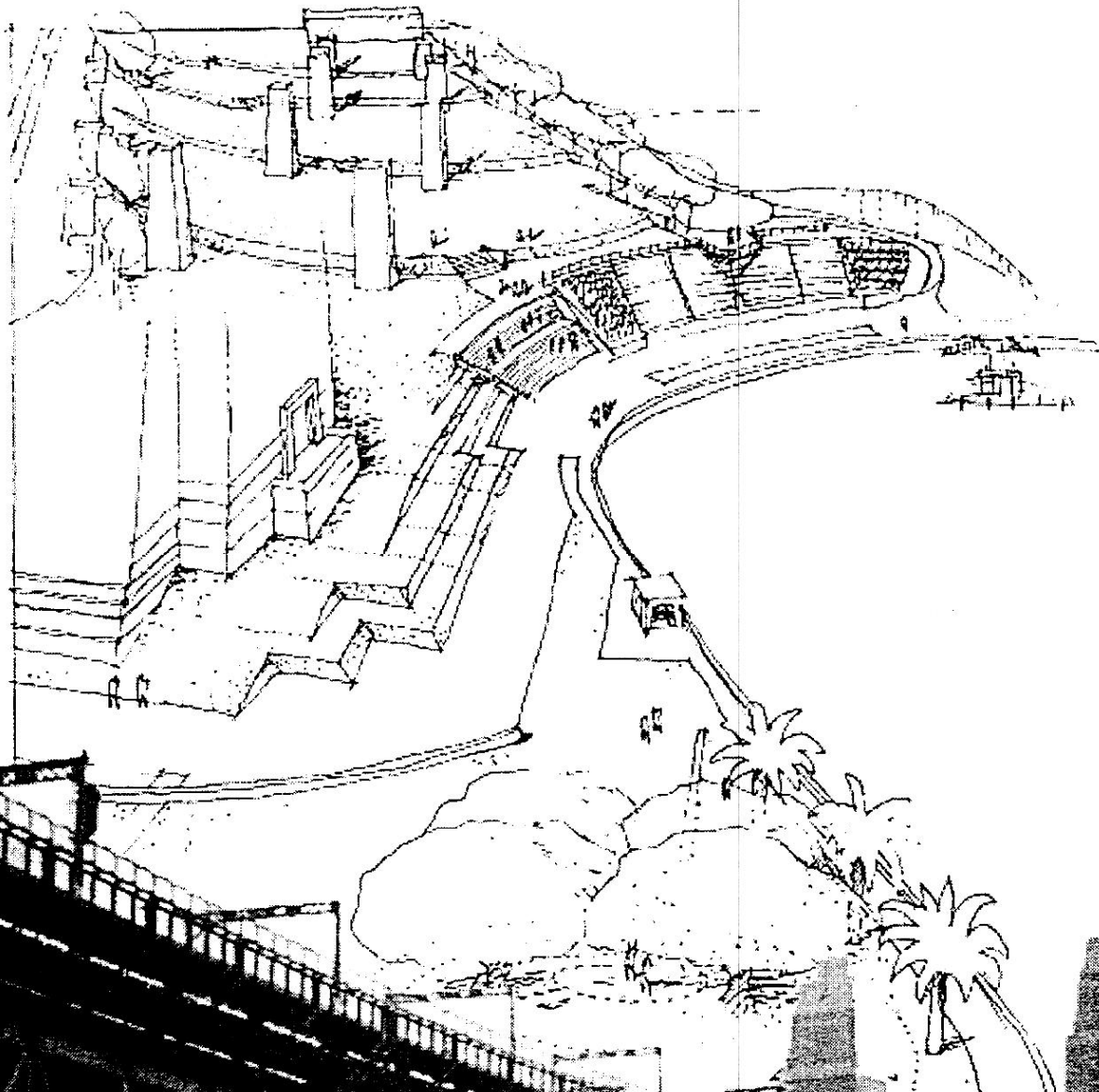


What comes next?

In the receipt of public submissions Council and the Consultant Team will review the Masterplan and make any necessary amendments.

In the following stages Council will commence detailed design and documentation. It is hoped that construction will commence in late 1998.





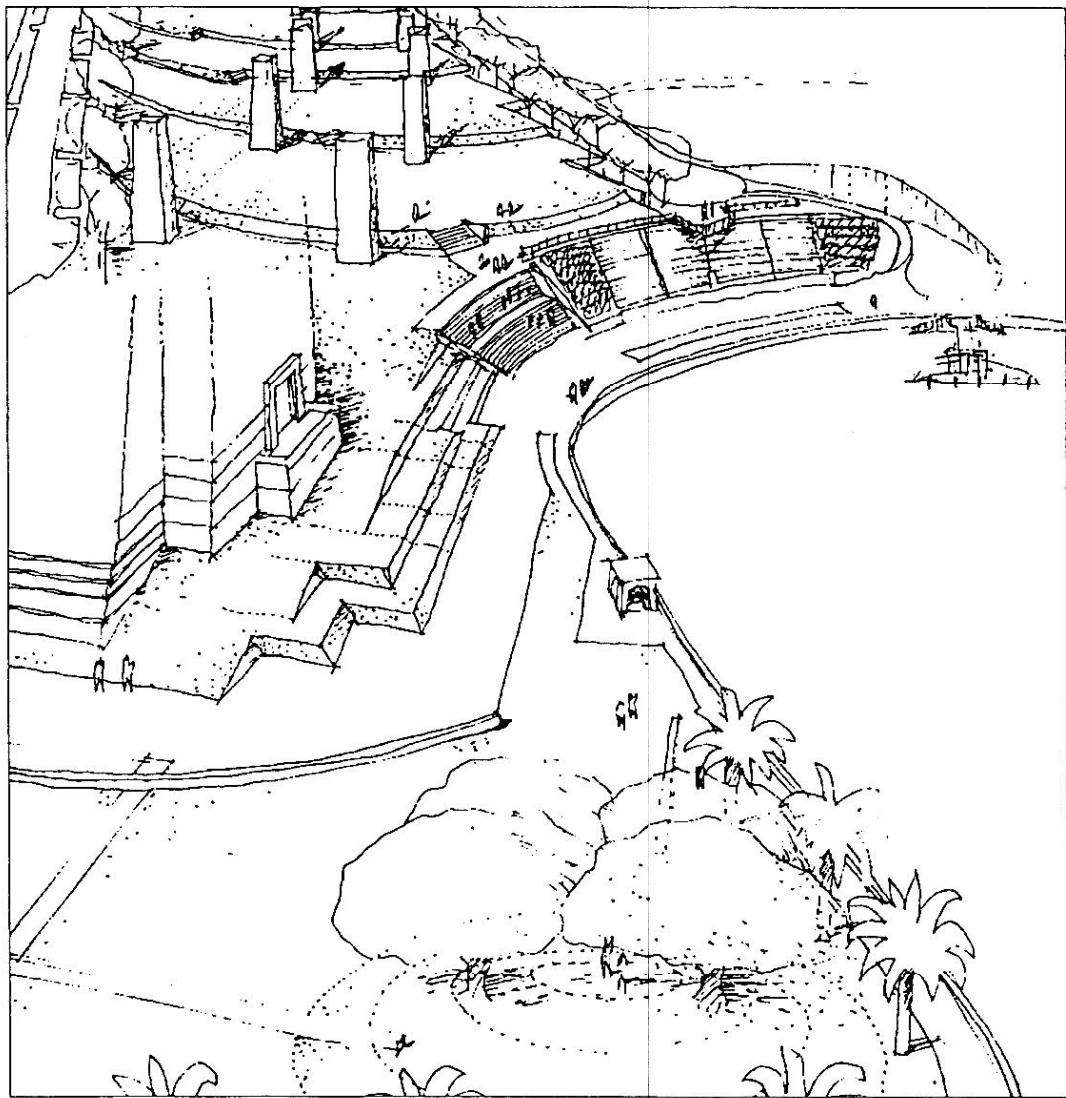
BRADFIELD PARK & KIRRIBILLI FORESHORE
Preferred Masterplan

View 3



View east across Bradfield Park lawn terraces

View 5

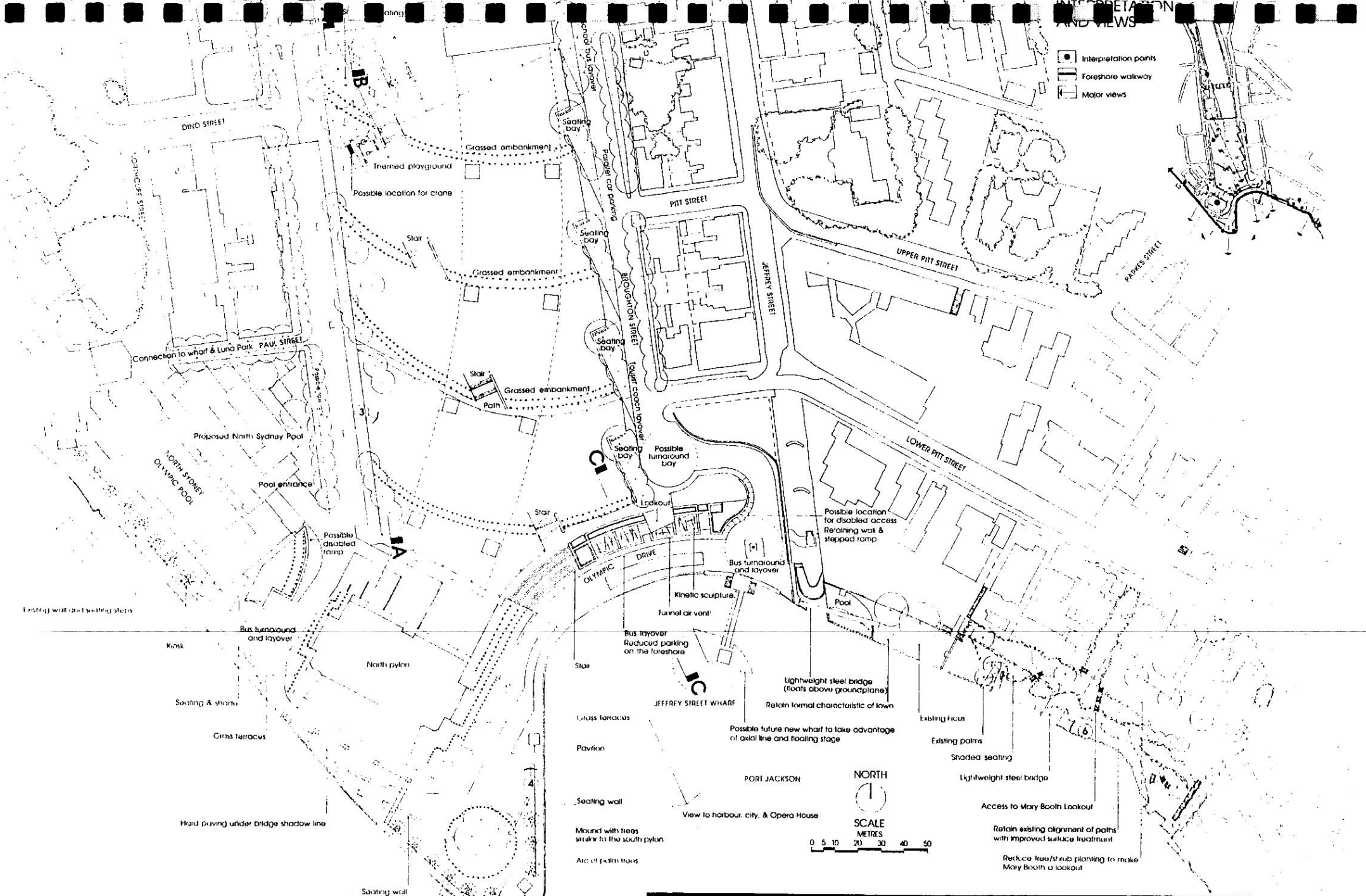


Aerial view north across foreshore, amphitheatre and lawn terraces

BRADFIELD PARK & KIRRIBILLI FORESHORE

Preferred Masterplan

- Interpretation points
- ▬ Foreshore walkway
- ▭ Major views



Bow of the 'Sydney' integrated interpretive plan involving key features of the foreshore and park

Bradfield Park And Kirribilli Foreshore
 preferred master plan

TechnologyOne ECM Document Number: 2659006



Redesign will include consolidation of the existing **tree canopy** for shade and better control over erosion.

Redefinition of the station **palm forecourt** enhancing its distinctive character and allowing clearer pedestrian movement to and from the station.

Reorganisation of the Bowling Club area to provide one bowling green in conjunction with the creation of a **new civic space** providing a link to Kirribilli Village centre. Redevelopment of the club house to provide community facilities such as a cafe while incorporating existing functions.

Creation of roadway pedestrian links connecting the commercial and residential areas to the east and west of the Bridge with **paved threshold treatments** to slow traffic.

Creation of a series of broad sloping **grassed terraces** under the Harbour Bridge responding to its monumental form, reducing erosion and defining spaces for different recreational activities.

Construction of an **amphitheatre** with seating and services to facilitate special events and entertainments near the North Pylon and providing uninterrupted views to the Harbour in the foreground and across to the dramatic city skyline, Circular Quay, the Rocks and the Opera House.

Upgrading of the Jeffrey Street ferry wharf area incorporating seating, steps and **safe access to the water's edge**.

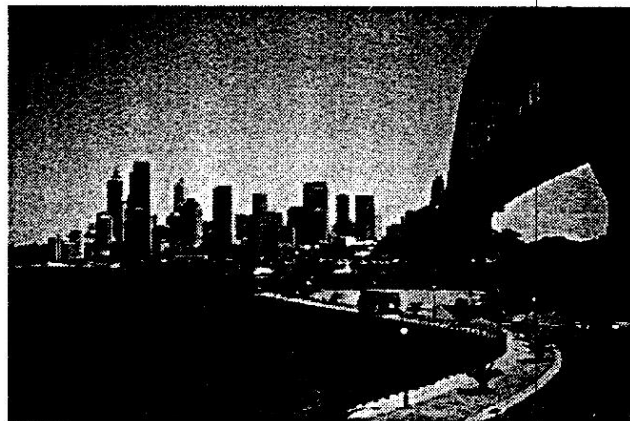
Accentuation of the Harbour foreshore at Milson's Point through **feature planting and pavement redesign** to achieve a dynamic shared pedestrian and vehicle precinct.

Opening up of Broughton Street **harbour vistas** to Circular Quay and the Opera House. Termination of the vista with a panoramic lookout point perhaps featuring kinetic art works.

Reinforcement of existing 'secret garden' character, conservation of foreshore planting, interpretation of remnant historic elements and provision of safe pedestrian access along **Kirribilli Foreshore**.

Enhancement of **foreshore pedestrian links** including improved disabled access.

The Masterplan also proposes the interpretation of the heritage values of the site as well as its historically significant features. Interpretation will be integrated into the development of primary foreshore paths and orientation points.



REALISATION

This Masterplan has been developed in order to find a balance between the local, regional and national values and significance of the site. With the Park's Plan of Management in place and North Sydney Council resolved to move into construction in 1998 the potential exists to develop a world class Park by building on the momentum of a city moving onto the world stage in the year 2000.

PUBLIC EXHIBITION

The Masterplan will be on exhibition for public viewing until 25 March 1998 at:

Stanton Library
Miller Street
North Sydney

Submissions will be accepted until 27 March 1998.

COMMENTS

We are seeking comments on the Draft Masterplan from anyone who may be interested. Please include any suggestions that you may wish to be considered in relation to this Draft Masterplan on the 'comments sheet' provided, or address comments to:

Megan White
North Sydney Council
PO Box 12
North Sydney NSW 2059

All public submissions will be considered prior to finalising the Masterplan.

BRADFIELD PARK & KIRRIBILLI FORESHORE

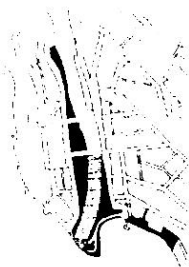
Preferred Masterplan

WHAT IS THE BRADFIELD PARK AND KIRRIBILLI FORESHORE MASTERPLAN PROJECT?

North Sydney Council's preparation of a landscape Masterplan for Bradfield Park and Kirribilli Foreshore is underway.

The Masterplan is an important step in developing design options for North Sydney's most high profile Park. The result will be a plan illustrating how the Park will look and function in the future.

The Mayor of North Sydney, Genia McCaffery, has encouraged residents to participate in this important study. *"With the Park's Plan of Management already in place the scene is set for an exciting masterplanning exercise.....one which the Council hopes will capture the community's imagination, and reflect the momentum of a city moving onto the world stage in 2000."*



...AND THE AIMS OF THE PROJECT?

The project aims to provide a high quality recreation facility for all, reflecting the site's significance and Harbour setting.

WHAT STAGE IS THE PROJECT AT?

So far an extensive review of the site and background research has been carried out. Three workshops have been held as well as an information stall at Kirribilli markets. Key ideas and opportunities raised at these forums are listed overleaf. Topics covered have included:

- Cultural and Natural Heritage
- Recreation, Leisure and Special Events
- Circulation and Access
- Landuse, Planning and Management
- Image and Character

We are continuing to gather information and to develop alternative concept options for the site.

WHAT'S NEXT?

In preparing the plan for the Parkland we will be holding another workshop for concept review in late November.

The draft Masterplan will be on public exhibition during February and March 98 at Stanton Library in North Sydney following a public launch in early February.



HOW TO CONTACT US:

Please call, fax, email, or write to:

Megan Phillips of
CLOUSTON

Phone: 9569 3388
Fax: 9569 3523
Email: clsyd@ozemail.com.au
Address: PO Box 44
LEICHHARDT NSW 2040

or
Megan White of
North Sydney Council

Phone: 9936 8225
Fax: 9936 8203

Prepared by
CLOUSTON
Landscape Architects . Urban Designers . Landscape Planners



BRADFIELD PARK
AND KIRRIBILLI FORESHORE



NEWSLETTER
November 1997



public exhibition

*"City Playground
Harbour Stage"*

We are seeking comments on the Bradfield Park and Kirribilli Foreshore Draft Masterplan from anyone who may be interested. Submissions should be mailed or faxed by 27 March 1998 to:

North Sydney Council
PO Box 12
North Sydney NSW 2059
Fax 9936 8203
Attn: Megan White - Landscape Planner



The Draft Bradfield Park and Kirribilli Foreshore Masterplan will be on exhibition for public viewing until 25 March 1998 at:

Stanton Library
240 Miller Street
North Sydney

The Draft Masterplan has been developed by North Sydney Council in conjunction with consultant Landscape Architects and Landscape Planners, CLOUSTON.

Exhibition of the Draft Masterplan follows an extensive programme of community consultation involving local residents and other key stakeholders.

Some of the Masterplan's major recommendations are:

- Protection and interpretation of natural and heritage values and features along Kirribilli Foreshore
- Creation of a series of broad sloping terraces under the Harbour Bridge
- Opening up of the Broughton Street vista to Circular Quay and the Opera House
- Construction of an amphitheatre with seating to facilitate special events and entertainments
- Reinforcement of local pedestrian links along the foreshore and regional connections

BRADFIELD PARK & KIRRIBILLI FORESHORE

Preferred Masterplan



...your part in its Future

North Sydney Council's preparation of a landscape masterplan for Bradfield Park and Kirribilli Foreshore is underway.

PROGRAMME SO FAR

Opportunities for community involvement in the project have been:

- Local Residents Workshop - 15 October
- Stakeholder Workshop - 21 October
- Kirribilli Market Stall - 25 October
- Interviews with key individuals and local services

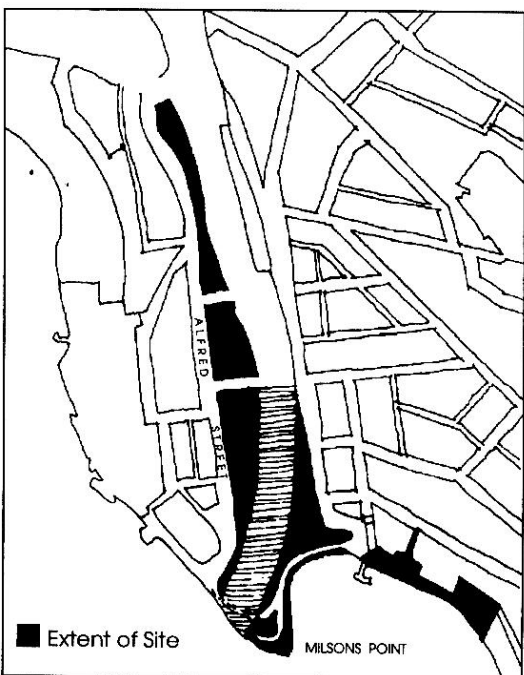
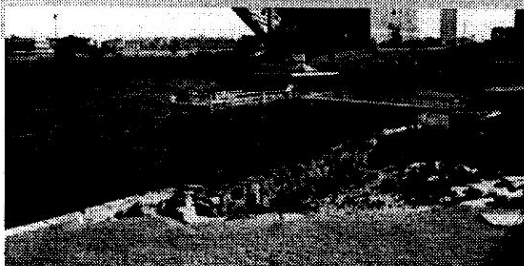
The Landscape Masterplan is an important step in developing design options for your parkland. The result will be a plan illustrating how the Parkland will look and function in the future.

ISSUES THAT HAVE COME UP

Opportunities and issues that people see as important are:

- Conservation of cultural heritage features
- Conservation of natural environment along Kirribilli foreshore
- Existing recreational uses of the Park
- Future uses and character of the Park - green haven
- Park as viewing place - 'the Harbour's amphitheatre'
- Interpretation of the history of the site
- Pedestrian, bike and vehicular circulation
- The Bridge - scale and dominance 'awe inspiring'
- Foreshore links around North Sydney and to the water

Your input is extremely valuable to ensure the needs of Park users are addressed. Please feel free to voice your comments and questions (refer contact details below).



WHAT'S NEXT

- Public Launch - early February 98
- Public Exhibition of Draft Masterplan February - March 98 at Stanton Library, Miller Street, North Sydney

CONTACT DETAILS

Megan Phillips of CLOUSTON Landscape Architects phone: 95693388 fax: 95693523 or Email: clysd@ozemail.com.au or Megan White at North Sydney Council phone: 99368225 or fax: 99368203

P A R K C LOUSTON

B R A D F I E L D P A R K C LOUSTON

and Kirribilli Foreshore



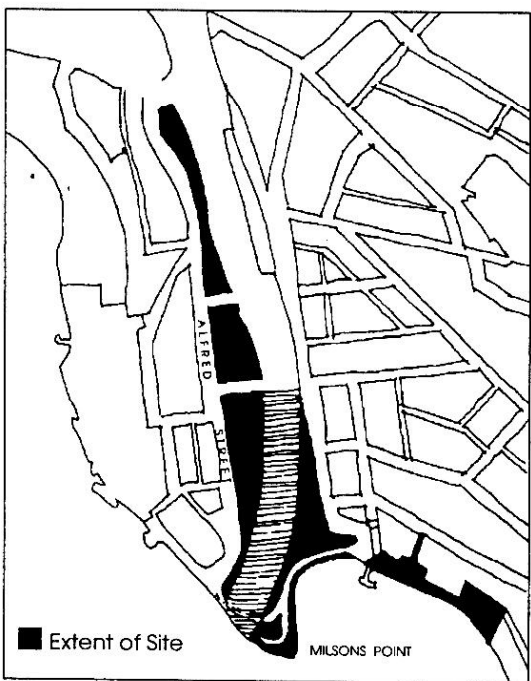
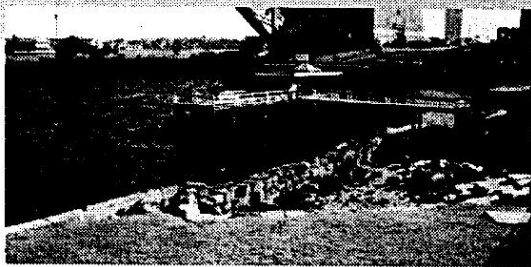
...your part in its Future

North Sydney Council's preparation of a landscape masterplan for Bradfield Park and Kirribilli Foreshore is underway.

In preparing the Masterplan we are seeking your input and assistance in understanding current issues affecting the Park.

Please feel free to voice your comments and questions today, as your input is extremely valuable to ensure the needs of Park users are addressed.

Speak to us or if you prefer use the sheet over the page to write your comments.



PROGRAMME SO FAR

Opportunities for community involvement in the project have been:

- Local Residents Workshop - 15 October
- Stakeholder Workshop - 21 October
- Kirribilli Market Stall - 25 October
- Interviews with key individuals and local services

ISSUES THAT HAVE COME UP

Opportunities and issues that people see as important are:

- Conservation of cultural heritage features
- Conservation of natural environment along Kirribilli foreshore
- Existing recreational uses of the Park
- Future uses and character of the Park - green haven
- Park as viewing place - 'the Harbour's amphitheatre'
- Interpretation of the history of the site
- Pedestrian, bike and vehicular circulation
- The Bridge - scale and dominance 'awe inspiring'
- Foreshore links around North Sydney and to the water

WHAT'S NEXT

Further chances for you to be involved (see below) will be advertised in the coming weeks.

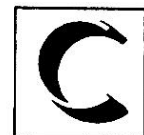
- Public Workshop for Concept Plan Review
- Public Launch (late January/early February 98)
- Public Exhibition of Draft Masterplan

P

A

R

K



CLOUSTON

BRADFIELD

and Kirribilli Foreshore



...your part in its Future

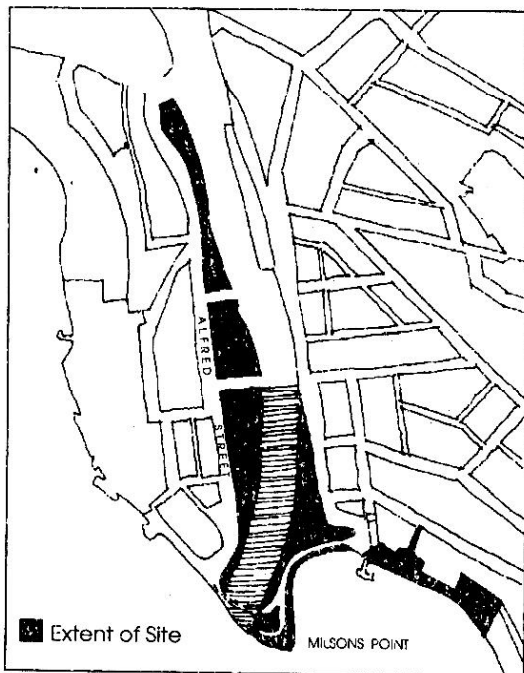
North Sydney Council is preparing a landscape masterplan for Bradfield Park and Captain Henry Waterhouse Reserve.

The Landscape Masterplan is an important step in developing design options for your parkland. The result will be a plan illustrating how the Parkland will look and function in the future.

In preparing the Masterplan we are seeking your input and assistance in understanding current issues affecting the Park. A range of opportunities to be involved in this project will be advertised over the coming weeks.

These include:

- a workshop for interested local residents (see below)
- a stall at Kirribilli Markets on 25 October 1997
- on-site interviews



LOCAL RESIDENTS WORKSHOP

DATE: 15 OCTOBER 1997

LOCATION: McMAHONS POINT
COMMUNITY CENTRE
165 BLUES POINT ROAD
McMAHONS POINT

TIME: 6:00PM (max. 2 hours)

If you have any queries or would like to submit preliminary comments please contact Megan Phillips of CLOUSTON Landscape Architects phone: 95693388, fax: 95693523 or Email: clsyd@ozemail.com.au or Megan White at North Sydney Council phone: 99368225 or Fax: 99368203.

P

A

R

K



CLOUSTON

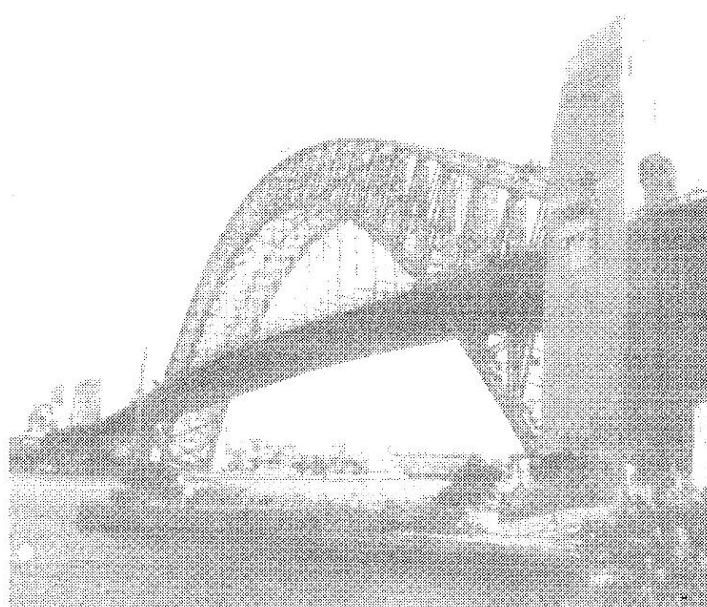
B
R
A
D
F
I
E
L
D

and Captain Henry Waterhouse Reserve

BRADFIELDPARK



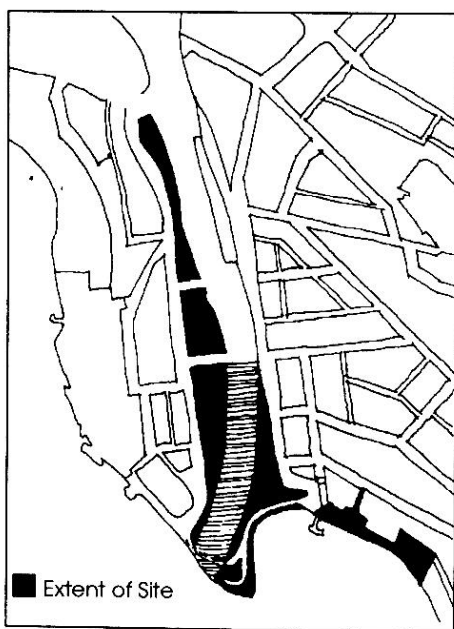
...your part in its Future



CLOUSTON Landscape Architects have been commissioned by North Sydney Council to prepare a landscape masterplan for Bradfield Park.

We are seeking your input to the preparation of the masterplan and assistance in understanding current issues affecting the Park. A range of opportunities to be involved in this project will be advertised over the next few months.

PARK



CLOUSTON

If you would like to participate in this important project or wish to submit preliminary comments please contact Megan Phillips of CLOUSTON phone: 95693388, fax: 95693523 or Email: clsyd@ozemail.com.au or Megan White of North Sydney Council phone: 99368225 or Fax: 99368203.

BRADFIELD PARK AND KIRRIBILLI FORESHORE M A S T E R P L A N

MEDIA RELEASE

BRADFIELD PARK: GATEWAY TO THE HARBOUR OR HARBOURSIDE LANDMARK

16 October 1997

Bradfield Park and the Kirribilli foreshore incorporating Captain Henry Waterhouse Reserve is one of the most significant tracts of open space in the North Sydney area. Harbourside location and proximity to key Sydney landmarks including the Sydney Harbour Bridge makes this Park one of the most valuable visual and recreational assets in Sydney.

North Sydney Council has recently commissioned CLOUSTON Landscape Architects and Landscape Planners to prepare a Masterplan for the Park.

The Masterplan is to provide a design which meets the needs of local park users while recognising the site's strategic importance for visitors and Sydneysiders.

The Masterplan phase spans approximately six months culminating in a public exhibition in January/February. This will lead to implementation and construction works.

Community consultation will be a key component of the masterplanning process.

A number of opportunities are being provided to engage local residents, other Park users and interested stakeholders in developing concepts for this landmark site. These include:

- stakeholder workshops
- on-site interviews with park users and key stakeholders
- stall at Kirribilli Markets on Saturday 25 October

The Mayor of North Sydney Genia McCaffery has encouraged residents to participate in this important study. "With the Park's Plan of Management already in place the scene is set for an exciting masterplanning exercise.....one which the Council hopes will capture the community's imagination, and reflect the momentum of a city moving onto the world stage in 2000."

For further information please contact:

Virginia Leafe
North Sydney Council Ph 9936 8120

Megan Phillips
CLOUSTON Ph 9569 3388



CLOUSTON

MEDIA INFORMATION PACKAGE

BRADFIELD PARK AND KIRIBILLI FORESHORE

MASTER PLAN

GENERAL INFORMATION

October 1997

Bradfield Park and the Kirribilli Foreshore are situated in the suburbs of Milson's Point and Kirribilli. Together these two parks form an almost unbroken line along the foreshore.

Located beneath the Sydney Harbour Bridge pylons Bradfield Park is North Sydney's most high profile Park. Adjacent to recreation facilities such as Luna Park and the North Sydney Olympic Pool and hosting the Kirribilli Markets this open space area is a popular local and visitor recreation venue.

Objectives:

The Masterplan for Bradfield Park and the Kirribilli Foreshore will reflect North Sydney Council's objectives to:

- *Provide a high quality recreation facility for all*
- *Reflect the site's significance and Harbour setting through appropriate design*
- *Emphasise the physical and visual links in and around the area's wider recreational assets*
- *Upgrade the aesthetic standard of the whole area*
- *Encourage a wider appreciation of the site's historic significance*
- *Satisfy the expectations of the diverse range of park stakeholder groups*

Issues:

Typical issues to be addressed in preparing the plan are:

- Landuse, Planning and Management
- Cultural and Natural Heritage
- Circulation and Access
- Recreation, Leisure and Special Events
- Image and Quality

The Park is perceived as an integral part of the local and regional recreational and visual landscape and provides for a diverse range of recreational and aesthetic needs. For that reason, community involvement and support will play an important role in the development of the Masterplan.



CLOUSTON

MEDIA INFORMATION PACKAGE

BRADFIELD PARK AND KIRRIBILLI FORESHORE M A S T E R P L A N

TIMETABLE OF ACTIVITIES

STAGE ONE

OCTOBER - Research and Analysis

- Council Workshop
- Local Resident Workshop
- Data collation and research
- Key Stakeholder Workshop
- On-site interviews
- Market stall

NOVEMBER - Concept Evaluation

- Identification of alternative Planning Concepts
- Identification of preferred Masterplan Concept
- Key stakeholder consultation on preferred Masterplan

DECEMBER - Masterplan Preparation

- Preliminary Draft Masterplan
- Draft Design Report
- Review

JANUARY/FEBRUARY- Public Launch

- Launch public exhibition
- Seven weeks display
- Report to Council

STAGE TWO

MARCH - Masterplan Finalisation

- Agree amendments to Masterplan following public submissions
- Agree Stage Two scope and budget
- Finalise Masterplan

APRIL /MAY- Design And Documentation

- Detailed Design Resolution
- Construction Drawings and Details
- Opinion of Probable Costs
- Final documentation

LATE 1998

- Commencement of Site Works



BRADFIELD PARK AND KIRRIBILLI FORESHORE M A S T E R P L A N

MEDIA RELEASE

CITY PLAYGROUND / HARBOUR STAGE

PUBLIC LAUNCH

20 January 1998

Since September 1997 North Sydney Council has been preparing a Masterplan for Bradfield Park and the Kirribilli Foreshore at **North Sydney**.

Together these parklands form one of the most significant tracts of **open space** in the North Sydney area.

Harbourside location and proximity to the **Sydney Harbour Bridge**, North Sydney Olympic Pool and the old Luna Park site makes this Park one of the most valuable visual and recreational assets in Sydney.

Following a programme of community consultation a Draft Masterplan has been prepared for Council by **CLOUSTON** Landscape Architects and Landscape Planners. The Plan incorporates the needs and aspirations of the local and wider community.

On **12 February** at **10 am** the Draft Masterplan will be launched in Bradfield Park by local celebrity **Ian Kiernan** and North Sydney **Lord Mayor, Genia Mc Caffery**.

Following the launch the Draft Masterplan will be exhibited for a period of 7 weeks in North Sydney's Stanton Library. Public comment will be invited at this time.

The Mayor of North Sydney Genia McCaffery has encouraged participation in this important study.

"With the Park's Plan of Management already in place the scene is set for an exciting masterplanning exercise.....one which the Council hopes will capture the community's imagination, and reflect the momentum of a city moving onto the world stage in 2000."

Launch details:

When 12 February 1998 10am -12noon
Where: Bradfield Park
 exact location to be added
Who: Ian Kiernan
 North Sydney Lord Mayor Genia Mc Caffery

For further information please contact:

Sally Williams
North Sydney Council Ph 9936 8120



BRADFIELD PARK AND KIRRIBILLI FORESHORE

MASTERPLAN

GENERAL INFORMATION

January 1998

Bradfield Park and the Kirribilli Foreshore are situated in the suburbs of Milson's Point and Kirribilli. Together these two parks form an almost unbroken line along the foreshore.

Located beneath the Sydney Harbour Bridge pylons Bradfield Park is North Sydney's most high profile Park. Adjacent to recreation facilities such as Luna Park and the North Sydney Olympic Pool and hosting the Kirribilli Markets this open space area is a popular local and visitor recreation venue.

Objectives:

The Masterplan for Bradfield Park and the Kirribilli Foreshore will reflect North Sydney Council's objectives to:

- *Provide a high quality recreation facility for all*
- *Reflect the site's significance and Harbour setting through appropriate design*
- *Emphasise the physical and visual links in and around the area's wider recreational assets*
- *Upgrade the aesthetic standard of the whole area*
- *Encourage a wider appreciation of the site's historic significance*
- *Satisfy the expectations of the diverse range of park stakeholder groups*

Community consultation has been a key component of the masterplanning process.

A number of opportunities are being provided to engage local residents, other Park users and interested stakeholders in developing concepts for this landmark site. So far these have included:

- stakeholder workshops
- on-site interviews with park users and key stakeholders
- stall at Kirribilli Markets on Saturday 25 October

BRADFIELD PARK AND KIRRIBILLI FORESHORE M A S T E R P L A N

TIMETABLE OF ACTIVITIES

STAGE ONE

OCTOBER - Research and Analysis

- Council Workshop
- Local Resident Workshop
- Data collation and research
- Key Stakeholder Workshop
- On-site interviews
- Market stall

NOVEMBER - Concept Evaluation

- Identification of alternative Planning Concepts
- Identification of preferred Masterplan Concept
- Key stakeholder consultation on preferred Masterplan

DECEMBER/JANUARY - Masterplan Preparation

- Preliminary Draft Masterplan
- Draft Design Report
- Review

FEBRUARY- Public Launch

- Public Launch of draft Masterplan
- Public exhibition/Seven weeks display
- Report to Council

STAGE TWO

MARCH/APRIL- Masterplan Finalisation

- Agree amendments to Masterplan following public submissions
- Agree Stage Two scope and budget
- Finalise Masterplan

MAY/JUNE- Design And Documentation

- Detailed Design Resolution
- Construction Drawings and Details
- Opinion of Probable Costs
- Final documentation

LATE 1998

- Commencement of Site Works

WORKSHOP ATTENDEES**COUNCIL WORKSHOP****9 OCTOBER****NAME****ORGANISATION**

Megan White	North Sydney Council (Landscape Planner)
Tony Lehmann	North Sydney Council (Traffic Engineer)
Eden Shepherd	North Sydney Council (Conservation Planner)
Louise Menday	North Sydney Council (Manager Strategic Planning)
Peter Parry	North Sydney Council (Customer Services - Events)
Norm Boyle	North Sydney Olympic Pool (Manager)
Brian Evesson	Cllr - Victoria Ward
Michel Reymond	Cllr - Victoria Ward
Nicholas Ritten	Cllr - Wollstonecraft Ward
Laurel Catchpool	Cllr - Tunks Ward
Andrew Gunter	Cllr - Tunks Ward
Hugh Lowenthal	Bradfield Precinct (President)

RESIDENT WORKSHOP**16 OCTOBER 1997****NAME****ORGANISATION**

Rob Emerson	North Sydney Council (Parks Manager)
Megan White	North Sydney Council (Landscape Planner)
Terry Wark	Milson Precinct
Eric Stevenson	Milson Precinct
A Lloyd	Bradfield Precinct
S Millar	Milson Precinct
B Crosley	Bradfield Precinct
J Armstrong	Bradfield Precinct
J Skarratt	Bradfield Resident
P Hercus	Kirribilli Resident
J & G Ballard	Kirribilli Resident
V MacDonald	Kirribilli Resident
H Schultz	Kirribilli Resident
Betty Wy	Lavender Resident
George Bredge	Lavender Resident
Matthew J King	Kirribilli Resident
B & B Jackson	Milsons Point Residents
J & J Cameron	Milsons Point Residents
S Berry	Professional Project Research
Joe Sacco	Kirribilli Resident
Mary Slepheus	Sydney Harbour Foreshores Conservation and Bradfield Resident
Susan DeBono	Kirribilli Resident

STAKEHOLDER WORKSHOP 21 OCTOBER 1997

NAME	ORGANISATION
Megan White	North Sydney Council (Landscape Planner)
Chris Purser	Taxis Afloat
Christine Whitemore	Public Works dept
John Ladd-Hudson	Ladd Hudson Architects
John Kelley	NSW Bus and Coach Association
Julie O'Rourke	State Transit Authority
Mary Stephens	Sydney Harbour Foreshore Committee
Alla Kamaralli	Sydney Harbour Foreshore Committee
Matthew Olijnyk	St Aloysius School
Pam Curley	Kirribilli Neighbourhood Centre
Peter Parry	North Sydney Council
Rob Butterworth	Sydney Harbour tunnel Authority

CONCEPT REVIEW WORKSHOP 26 NOVEMBER 1997

NAME	ORGANISATION
Rob Emerson	North Sydney Council (Parks Manager)
Megan White	North Sydney Council (Landscape Planner)
B.Evesson	Councillor
R.Walker	RTA
S.Berry	Professional Project Research
T.Lehman	North Sydney Council
P.Parry	North Sydney Council
P.Walters	Sydney Harbour Tunnel
S.Hetherington	Kirribilli Neighbourhood Centre
S.Haines	Kirribilli Neighbourhood Centre
V MacDonald	Kirribilli Resident
J.Armstrong	Kirribilli Resident
J. & J Cameron	Milsons Point Resident
Chris Purser	Taxis Afloat
V. Marchandehi	Kirribilli Resident
J & J Cameron	Milsons Point Residents
H.Schultz	Kirribilli Resident
M.Stephens	Sydney Harbour Foreshores Conservation and Bradfield Resident
C.Sully	Bradfield Precinct

COUNCIL CONCEPT REVIEW**11 DECEMBER 1997****NAME****ORGANISATION**

Megan White
Eden Shepherd
Louise Menday
Peter Parry
Nick Ritten
Rob Emerson
Greg Cooper
Warwick Hatton
Norm Boyle
Michel Reymond
Laurel Catchpool
Andrew Gunter
Penny Scardfield

North Sydney Council (Landscape Planner)
North Sydney Council (Conservation Planner)
North Sydney Council (Manager Strategic Planning)
North Sydney Council (Customer Services - Events)
North Sydney Council
North Sydney Council
North Sydney Council (Engineer)
North Sydney Council
North Sydney Olympic Pool (Manager)
Cllr - Victoria Ward
Cllr - Tunks Ward
Cllr - Tunks Ward
Cllr



CLOUSTON

6A WETHERILL STREET • LEICHHARDT • PO BOX 44 • NSW 2040 • FACSIMILE (02) 9569 3523 • TELEPHONE (02) 9569 3388

BRADFIELD PARK AND CAPTAIN HENRY WATERHOUSE RESERVE M A S T E R P L A N

COUNCIL WORKSHOP

9 OCTOBER 1997

A G E N D A

1.0 INTRODUCTION

- Team
- CLOUSTON Personnel

2.0 THE BRADFIELD - WATERHOUSE PROJECT

- Scope
- Objectives
- Staged Programme
- Products and Outcomes
- Consultation Strategy

3.0 PLANNING AND DESIGN ESSENTIALS

- Vision
- Significance
- Process

4.0 COUNCIL DESIGN PERSPECTIVES

- Cultural and Natural Heritage
- Recreation, Leisure and Special Events
- Circulation and Access
- Landuse, Planning and Management
- Image and Character

5.0 WHERE TO NEXT ?

LANDSCAPE ARCHITECTS • URBAN DESIGNERS • LANDSCAPE PLANNERS

DIRECTORS • LEONARD LYNCH • CROSBIE LORIMER • ASSOCIATES • SUELLEN FITZGERALD • TONY COX • MARTIN O'DEA
SYDNEY • ALICE SPRINGS • DARWIN • TOWNSVILLE

CLOUSTON IS THE TRADING NAME OF BRIAN CLOUSTON AND PARTNERS (AUSTRALIA) PTY LTD • A.C.N. 003 049 616



CLOUSTON

BRADFIELD PARK AND KIRRIBILLI FORESHORE

M A S T E R P L A N

OBJECTIVES

The aim of the project is to prepare a high quality landscape design and comprehensive supporting documentation in order to facilitate the upgrading of Bradfield Park and the adjacent Kirribilli Foreshore. The project should be conducted with a high level of community consultation, resulting in community support for the proposal, and a solution consistent with community priorities.

North Sydney Council Requires a design solution which meets the following objectives

- 1.0 Provide a **HIGH QUALITY RECREATION FACILITY** which meets the identified needs of the community, including local residents, members of the wider North Sydney community and visitors
- 2.0 Appropriately **REFLECTS THE SIGNIFICANCE OF THE SITE'S LOCATION**, and which is consistent with the Sydney Harbour Foreshore landscape as a whole.
- 3.0 Emphasise the **PHYSICAL AND VISUAL CONNECTIONS** between Bradfield Park and Kirribilli Foreshore, the North Sydney Olympic Pool and the Luna Park site.
- 4.0 **UPGRADES THE AESTHETICS OF THE PARK** and associated foreshore area
- 5.0 Help users become aware of and **APPRECIATE THE HISTORICAL SIGNIFICANCE** of the site
- 6.0 Meets the needs of and is acceptable to the various **STAKEHOLDER GROUPS**

All design proposals should be consistent with the aims and objectives of the Bradfield Park Plan of Management, NSC, 1996



CLOUSTON

BRADFIELD PARK AND KIRRIBILLI FORESHORE

M A S T E R P L A N

WHERE TO NEXT ?

1.0 INTERVIEWS AND MARKET STALL

2.0 SITE ANALYSIS

3.0 MASTERPLAN CONCEPT DEVELOPMENT

4.0 DRAFT MASTERPLAN

5.0 PUBLIC LAUNCH



CLOUSTON

BRADFIELD PARK AND KIRIBILLI FORESHORE

M A S T E R P L A N

PRODUCTS AND OUTCOMES

STAGE ONE - MASTERPLAN

Phase Two: Research and Analysis

Site Analysis	A1 Plans @ 1:1000	Colour rendered Plan & photos illustrating issues/ features of the Park
Opportunities and constraints	A1 Plans @ 1:500	Colour rendered graphics for easy interpretation by public
Progress Report	A4 Report	Summary of planning issues and community consultation. Review of background research field work and assumptions. Assessment of development context and regional significance. Opportunities and constraints summary

Phase Three: Concept Design

Park Zoning	A1 Plan @ 1:1000	Planning principals and zoning diagram coloured
Concept Options (say 3 alternatives)	A1 Plans @ 1:500 (3 x copies)	Colour rendered Plan, sections, perspectives & sketches
Character Board	A1 Images at various scales	Colour images of design details or characteristics
Preferred Masterplan Concept	A1 Plan @ 1:500	Coloured sketch plan sections and functional diagrams



CLOUSTON

BRADFIELD PARK AND KIRIBILLI FORESHORE

M A S T E R P L A N

PRODUCTS AND OUTCOMES

Phase Four: Masterplan and Exhibition

Background & Context	A1 Plans at various scales	Text and colour rendered plans
Site Opportunities and Constraints	A1 Plan @ 1:500	Colour rendered plan & photos
Masterplan	A1 Plan @ 1:500	Colour rendered plan
Sections and Details	A1 Plan at various scales	Colour rendered drawings and diagrams showing levels, materials and character proposed
Perspectives	A1 Drawing with various scale sketches	Six colour rendered perspectives, including at least one aerial view
Masterplan Reports (preliminary and draft)	A4 reports with Approx 10 pages and A3 graphic foldouts	Planning report including the opinion of probable cost, possible staging & key drawings colour reduced to A3

Phase Five: Masterplan Finalisation

Masterplan	A 1 Plan @ 1:500	Amended final illustrative Masterplan
Planning Strategy	A1 Plan @ 1:1000	Park development strategy, diagrams and schedules Colour rendered
Park Development Stages/Areas	A1 Plan(s) @ 1:200	Plan, sections and key details, for each Area/Stage colour rendered.
Perspectives	A1 Sheet(s)	One aerial perspective, colour rendered for Masterplan. Four perspectives on one sheet per development area.

Perspectives

A1 Sheet(s)

One aerial
perspective, colour
rendered for
Masterplan.
Four perspectives on
one sheet per
development area.



CLOUSTON

BRADFIELD PARK AND KIRRIBILLI FORESHORE M A S T E R P L A N

LOCAL RESIDENTS WORKSHOP

15 OCTOBER 1997

A G E N D A

1.0 INTRODUCTION

- Team
- CLOUSTON Personnel

2.0 THE BRADFIELD PARK - KIRRIBILLI FORESHORE PROJECT

- Scope
- Objectives
- Programme
- Outcomes
- Consultation Strategy

3.0 PLANNING AND DESIGN ESSENTIALS

- Vision
- Process
- Significance

4.0 COMMUNITY DESIGN PERSPECTIVES

- Cultural and Natural Heritage
- Recreation, Leisure and Special Events
- Circulation and Access
- Landuse, Planning and Management
- Image and Character

5.0 WHERE TO NEXT ?



CLOUSTON

BRADFIELD PARK AND KIRRIBILLI FORESHORE M A S T E R P L A N

STAKEHOLDER WORKSHOP

21 OCTOBER 1997

Thank you for attending this stakeholder workshop, the purpose of which is to introduce the study team, to describe the Masterplanning process and to gather information and ideas to assist the study team in developing a Masterplan for Bradfield Park and the Kirribilli Foreshore.

A G E N D A

1.0 INTRODUCTION

- Team
- CLOUSTON Personnel

2.0 THE BRADFIELD PARK - KIRRIBILLI FORESHORE PROJECT

- Scope
- Objectives
- Programme
- Consultation Strategy
 - Cultural and Natural Heritage
 - Recreation, Lelsure and Special Events
 - Circulation and Access
 - Landuse, Planning and Management
 - Image and Character

3.0 STAKEHOLDER DESIGN PERSPECTIVES

- Planning Opportunities
 - Area of Responsibility
 - Site Operation Issues, Constraints and Opportunities
 - Forward Planning
- Responses to Community Input to Date

4.0 WHERE TO NEXT ?

- Vision
- Next steps

Please feel free to voice your comments and questions during the evening, as your input is extremely important in this process.

If you prefer to write your comments, please use the sheet over page. This can be handed in at the end of the night or sent to CLOUSTON (attention Megan Phillips) during the next week.

Thank you for your contribution on this important project.



**BRADFIELD PARK AND KIRIBILLI FORESHORE
MASTERPLAN**

Please use this sheet to raise any issues or concerns related to this project that you would like the project team to consider .

.....

.....

.....

.....

.....

.....

.....

.....

.....

.....

.....

Please hand to the consultant at the meeting, or send to:

CROSBIE LORIMER

CLOUSTON LANDSCAPE ARCHITECTS
PO BOX 44
LEICHHARDT NSW 2040

TELEPHONE: (02) 9569 - 3388

Optional additional information

NAME

ADDRESS

.....

.....

TELEPHONE



BRADFIELD PARK AND KIRRIBILLI FORESHORE M A S T E R P L A N

CONCEPT REVIEW WORKSHOP

26 NOVEMBER 1997

Thank you for attending this Concept Review Workshop, the purpose of which is to present three Masterplan Concept Models for Bradfield Park and the Kirribilli Foreshore for discussion and review.

A G E N D A

- 1.0 INTRODUCTION
 - Outline of Evenings Programme
 - Project Update
 - Programme
- 2.0 PLANNING PRINCIPLES
 - Vision
 - Objectives
- 3.0 CONCEPT MODELS
 - Masterplan Models
 - Elementary
 - Intermediate
 - Comprehensive
 - Key Strategies
- 4.0 DESIGN PERSPECTIVES
 - Workshop Review and Discussion
 - Character Images
 - Conclusions
- 5.0 WHERE TO NEXT ?

Please feel free to voice your comments and questions during the evening, as your input is extremely important in this process.

If you prefer to write your comments, please use the sheet over page. This can be handed in at the end of the night or sent to CLOUSTON (attention Megan Phillips) during the next week.

Thank you for your contribution on this important project.



CLOUSTON

**BRADFIELD PARK AND KIRRIBILLI FORESHORE
MASTERPLAN**

Please use this sheet to raise any issues or concerns related to this project that you would like the project team to consider .

.....

.....

.....

.....

.....

.....

.....

.....

.....

.....

.....

.....

.....

.....

.....

Please hand to the consultant at the meeting, or send to:

CROSBIE LORIMER

CLOUSTON LANDSCAPE ARCHITECTS
PO BOX 44
LEICHHARDT NSW 2040

TELEPHONE: (02) 9569 - 3388

Optional additional information

NAME

ADDRESS

.....

.....

TELEPHONE



CLOUSTON

BRADFIELD PARK AND KIRRIBILLI FORESHORE M A S T E R P L A N

COUNCIL CONCEPT REVIEW WORKSHOP

11 DECEMBER 1997

Thank you for attending this Concept Review Workshop. The purpose of the workshop is to present the three Masterplan Concept Models for Bradfield Park and the Kirribilli Foreshore presented at the community Concept Review Workshop on 26 November. Discussion of the models and feedback from the community workshop will form the basis for preparation of a preferred Masterplan.

A G E N D A

1.0 INTRODUCTION

- Outline of Evenings Programme
- Project Update
- Programme

2.0 PLANNING PRINCIPLES

- Vision
- Objectives

3.0 CONCEPT MODELS

- Masterplan Models
 - Elementary
 - Intermediate
 - Comprehensive
- Traffic and Parking Strategies
- Review and Discussion

4.0 PREFERRED MASTERPLAN DIRECTIONS

- Community Concept Review Workshop
- Recommended Planning Strategy
- Review and Discussion
- Conclusions

5.0 NEXT STAGES

Please feel free to voice your comments and questions during the evening, as your input is extremely important in this process.

If you prefer to write your comments, please use the sheet over page. This can be handed in at the end of the night or sent to CLOUSTON (attention Megan Phillips) during the next week.

Thank you for your continued contribution on this important project.





**BRADFIELD PARK AND KIRRIBILLI FORESHORE
M A S T E R P L A N**

PUBLIC LAUNCH

12 FEBRUARY 1998 10am

A G E N D A

- | | | |
|-----|--|-------------------|
| 1.0 | INTRODUCTION | 3 minutes |
| | • Rob Emerson (MC) will introduce the project and the Mayor | |
| 2.0 | MAYOR'S SPEECH | 5 minutes |
| 3.0 | IAN KIERNAN | 5 minutes |
| 4.0 | CLOUSTON | 10 minutes |
| | • Presentation of the MasterPlan
Environmental protection
Downplay sensitive issues eg Bowling Club/Kirribilli foreshore | |
| 5.0 | QUESTION TIME | |



BRADFIELD PARK AND KIRIBILLI FORESHORE M A S T E R P L A N

OBJECTIVES

The aim of the project is to prepare a high quality landscape design and comprehensive supporting documentation in order to facilitate the upgrading of Bradfield Park and the adjacent Kirribilli Foreshore. The project should be conducted with a high level of community consultation, resulting in community support for the proposal, and a solution consistent with community priorities.

North Sydney Council Requires a design solution which meets the following objectives

- 1.0 Provide a **HIGH QUALITY RECREATION FACILITY** which meets the identified needs of the community, including local residents, members of the wider North Sydney community and visitors
- 2.0 Appropriately **REFLECTS THE SIGNIFICANCE OF THE SITE'S LOCATION**, and which is consistent with the Sydney Harbour Foreshore landscape as a whole.
- 3.0 Emphasise the **PHYSICAL AND VISUAL CONNECTIONS** between Bradfield Park and Kirribilli Foreshore, the North Sydney Olympic Pool and the Luna Park site.
- 4.0 **UPGRADES THE AESTHETICS OF THE PARK** and associated foreshore area
- 5.0 Help users become aware of and **APPRECIATE THE HISTORICAL SIGNIFICANCE** of the site
- 6.0 Meets the needs of and is acceptable to the various **STAKEHOLDER GROUPS**

All design proposals should be consistent with the aims and objectives of the Bradfield Park Plan of Management, NSC, 1996

20 May 1998

G97/S1/1 Pt 26
(SK,MB) (5022)

C	RECEIVED
	25 MAY 1998

MEMORANDUM



FROM: MARTIN BASS - PRECINCT MANAGER

SUBJECT: BRADFIELD PRECINCT

Bradfield Precinct at their meeting of 15 April discussed the following issues, this is a verbatim account of the minutes received.

The following is the precinct's response to the exhibition of the draft master plan.

- Terracing is not appropriate for the site, it should be left as a green sloping lawn. It would ruin the ambience of the site and would not be convenient for prams, young children, wheelchairs and less abled. It is supposed to be passive green space and terracing would further encourage use for ball games.

VOTING: 9- FOR , 1- AGAINST, 0 - ABSTENTIONS

- There is need for some leveling in places such as under the bridge, so that the ground is stable and easy to walk across.

VOTING: 10 - FOR , 0- AGAINST, 0 - ABSTENTIONS

- There is a need for some levelling in places such as under the bridge, so that the ground is stable and easy to walk across.

VOTING: 10 - FOR , 0- AGAINST, 0 - ABSTENTIONS

- There needs to be sufficient space for the Kirribilli Markets

VOTING: 10 - FOR , 0- AGAINST, 0 - ABSTENTIONS

- Additional seating needs to be provided

VOTING: 10 - FOR , 0- AGAINST, 0 - ABSTENTIONS

- When the park is used as an assembly point for rallies it should not be permissible for early starts on weekends, especially when loudhailers are used.

VOTING: 10 - FOR , 0- AGAINST, 0 - ABSTENTIONS

- The erection of marquees for parties on the harbour foreshore of the park should not become a regular event.

VOTING: 10 - FOR , 0- AGAINST, 0 - ABSTENTIONS

- The redevelopment must include regeneration of public foreshores up to Mary Booth. The tidal pool especially needs maintenance.

VOTING: 10 - FOR , 0- AGAINST, 0 - ABSTENTIONS

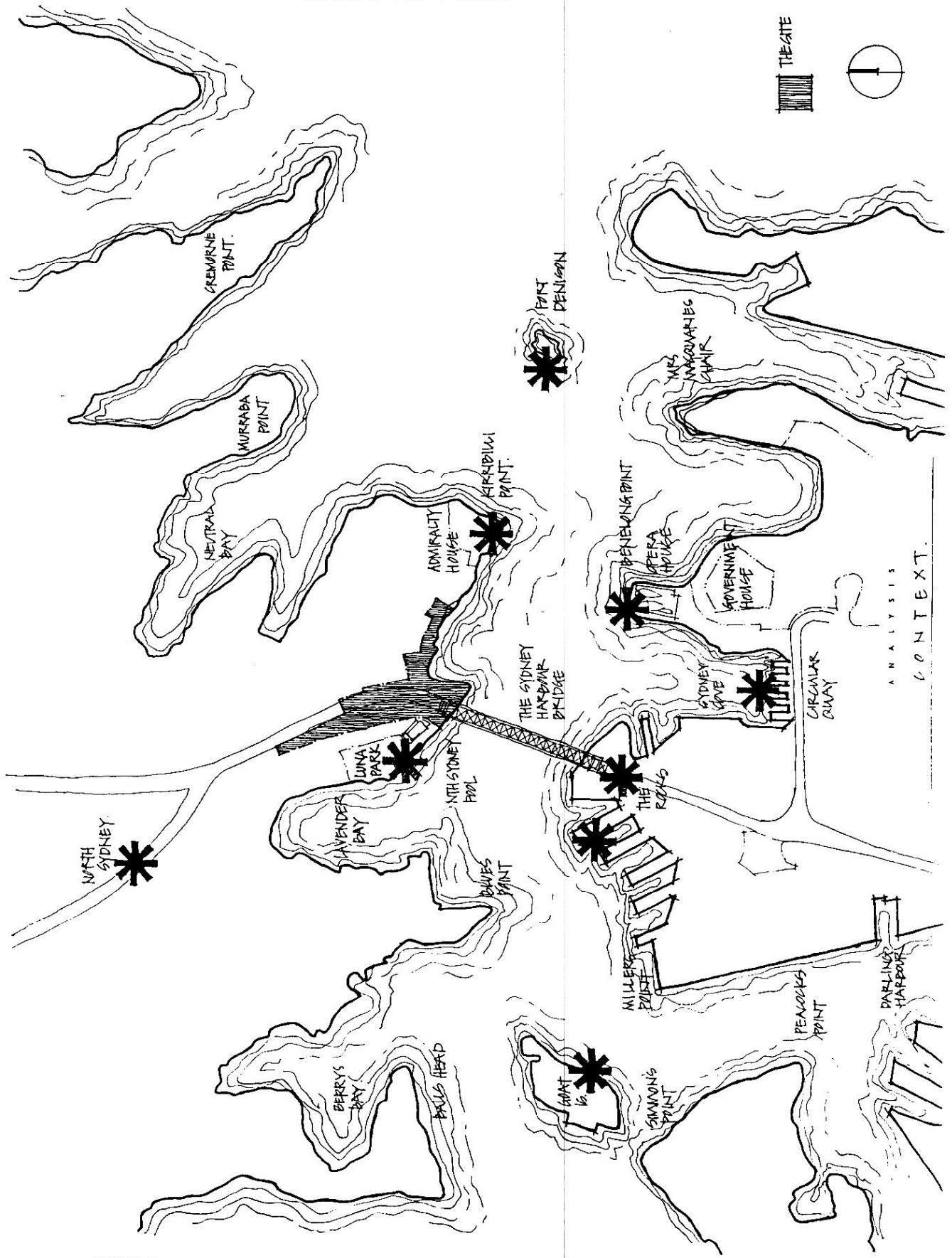


FIGURE 1 CONTEXT

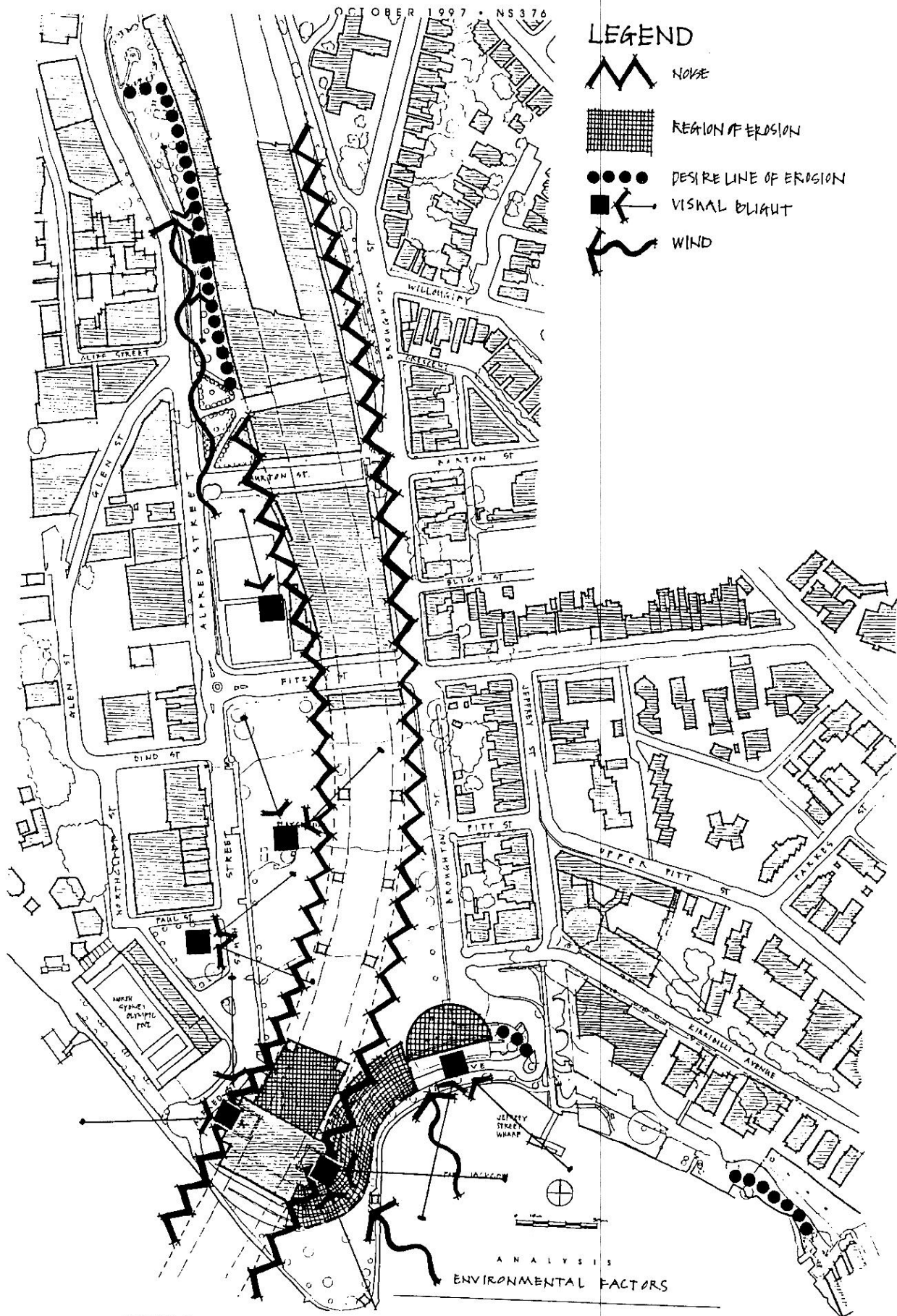


FIGURE 2 ENVIRONMENTAL FACTORS

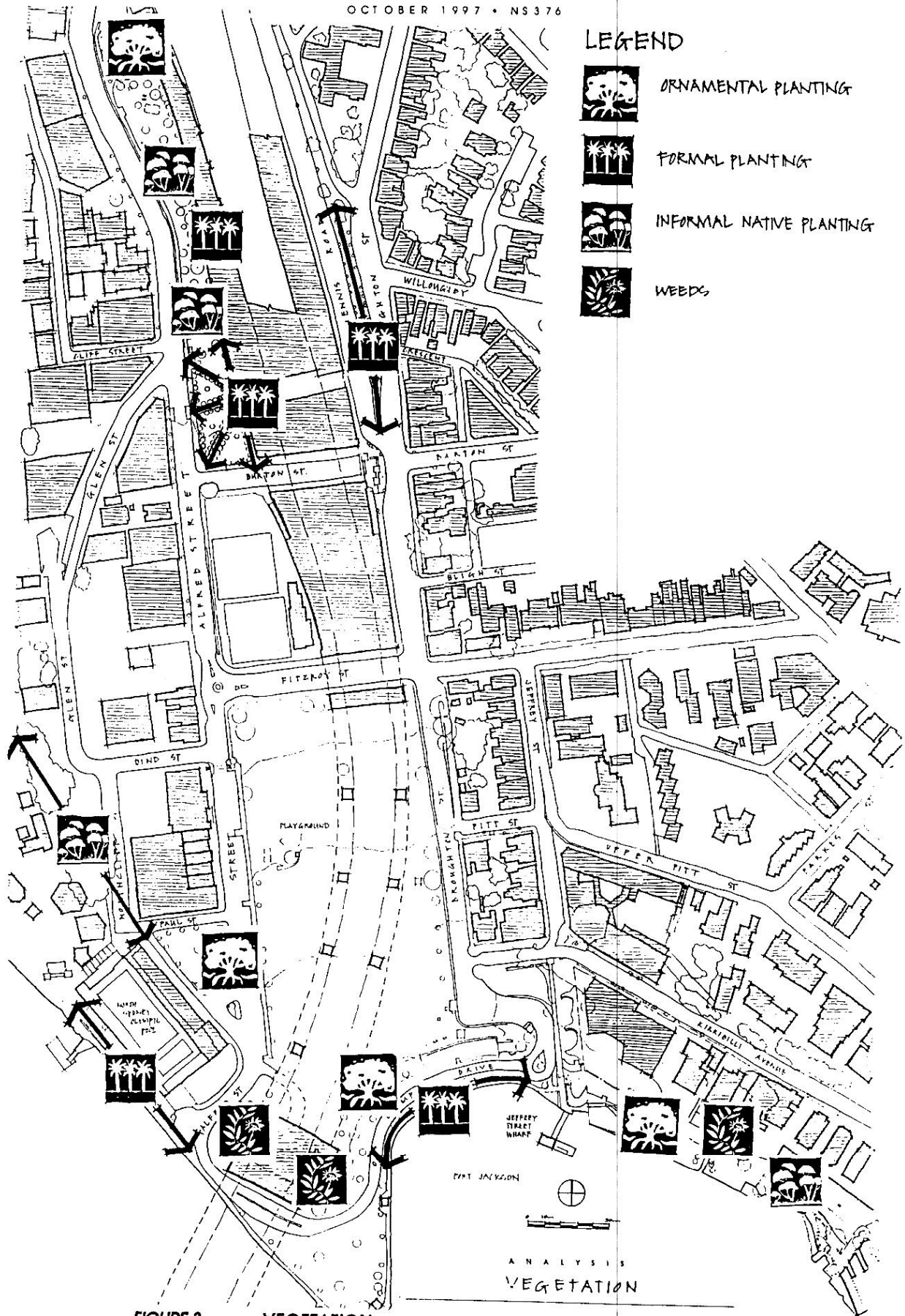


FIGURE 3 VEGETATION

OCTOBER 1997 • NS376

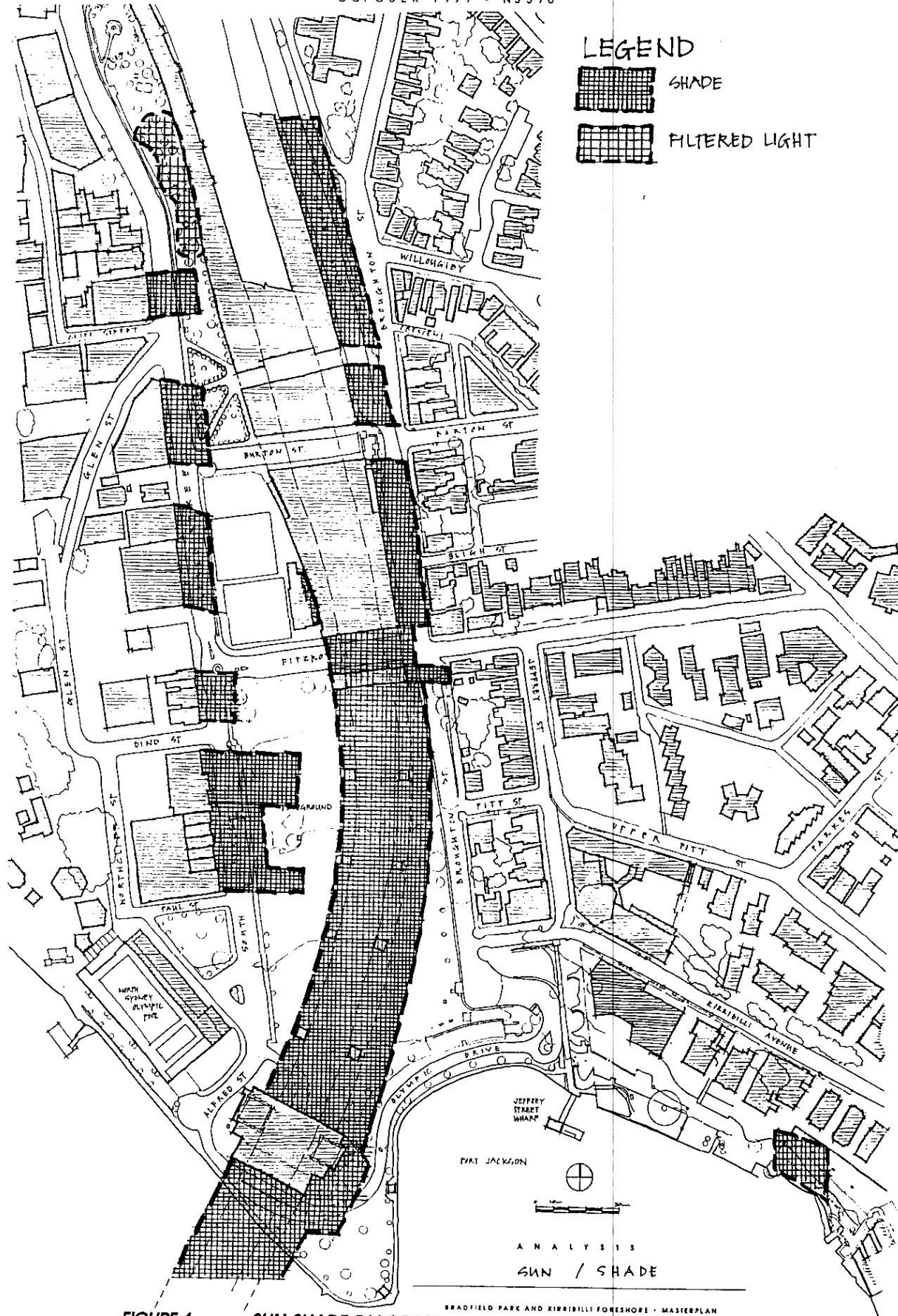


FIGURE 4 SUN SHADE DIAGRAM

OCTOBER 1997 • NS376

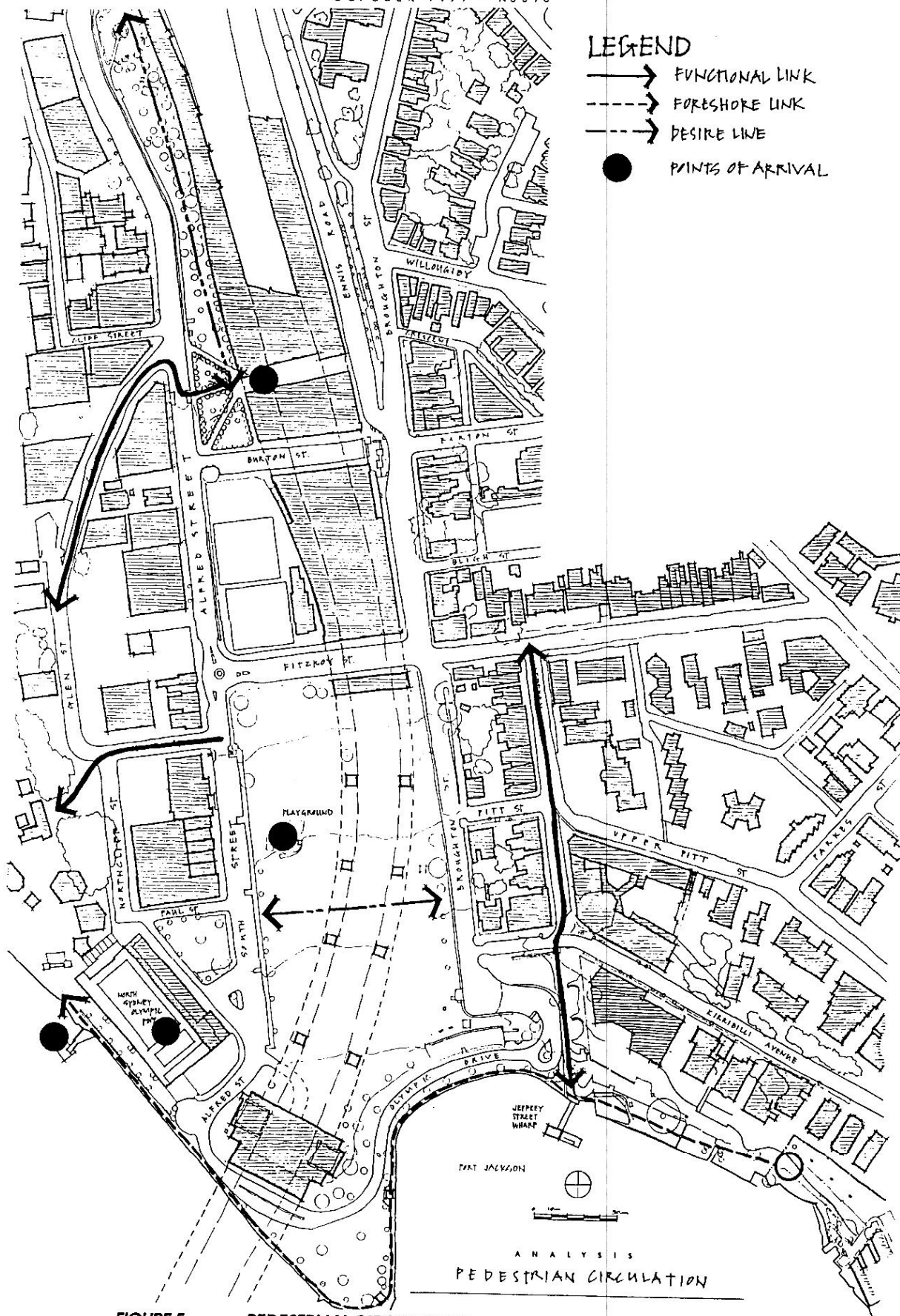


FIGURE 5 PEDESTRIAN CIRCULATION

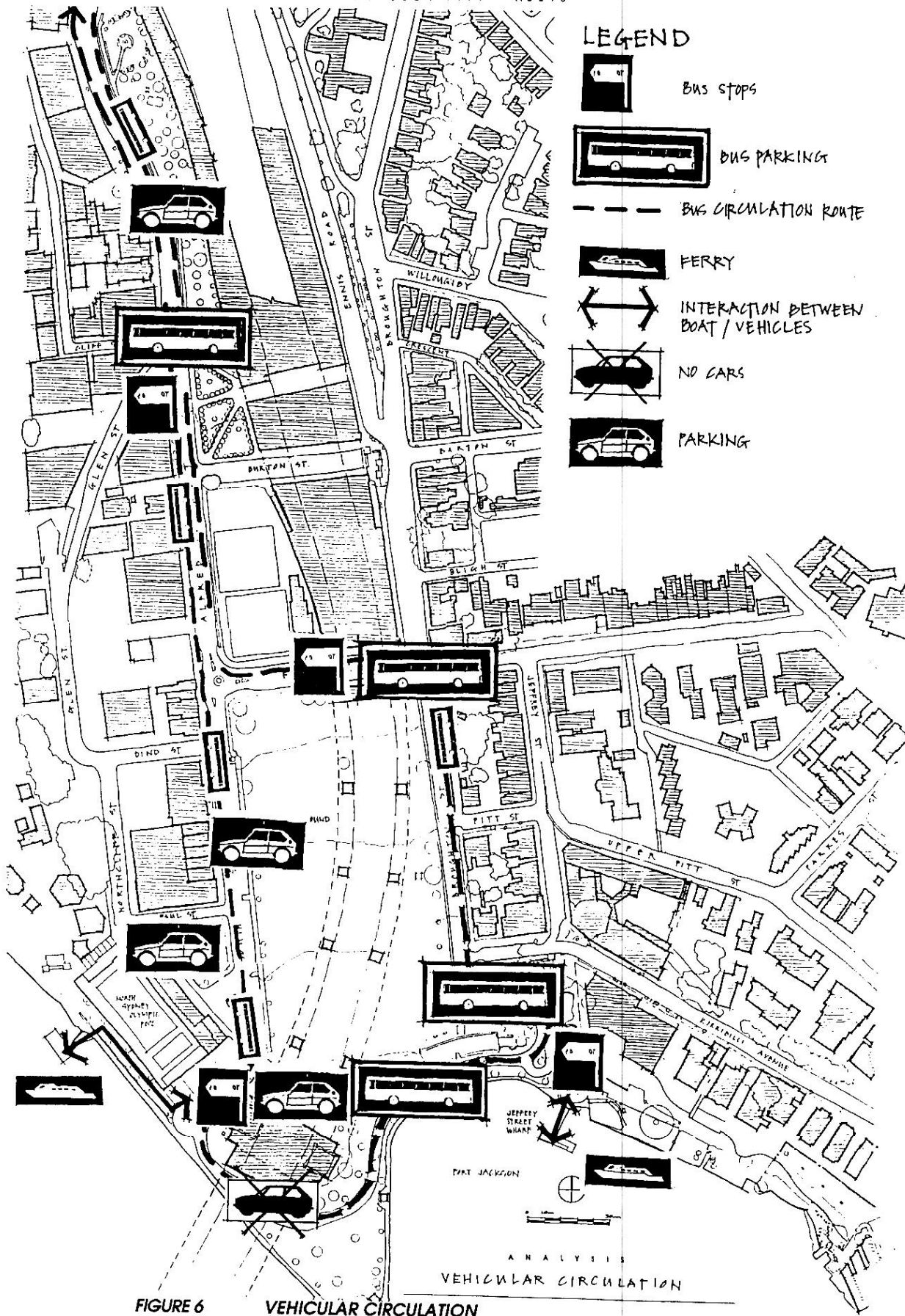


FIGURE 6 VEHICULAR CIRCULATION

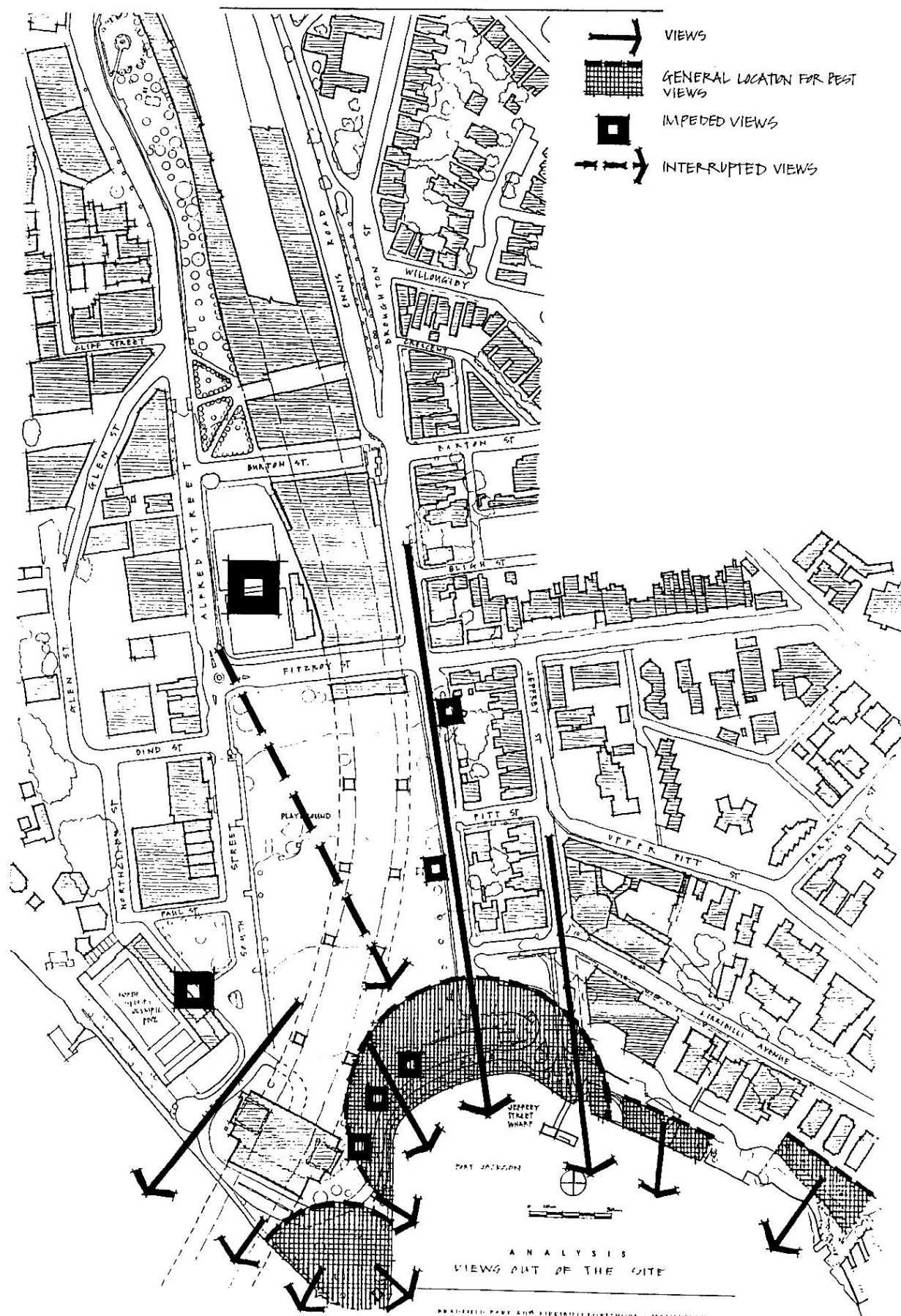
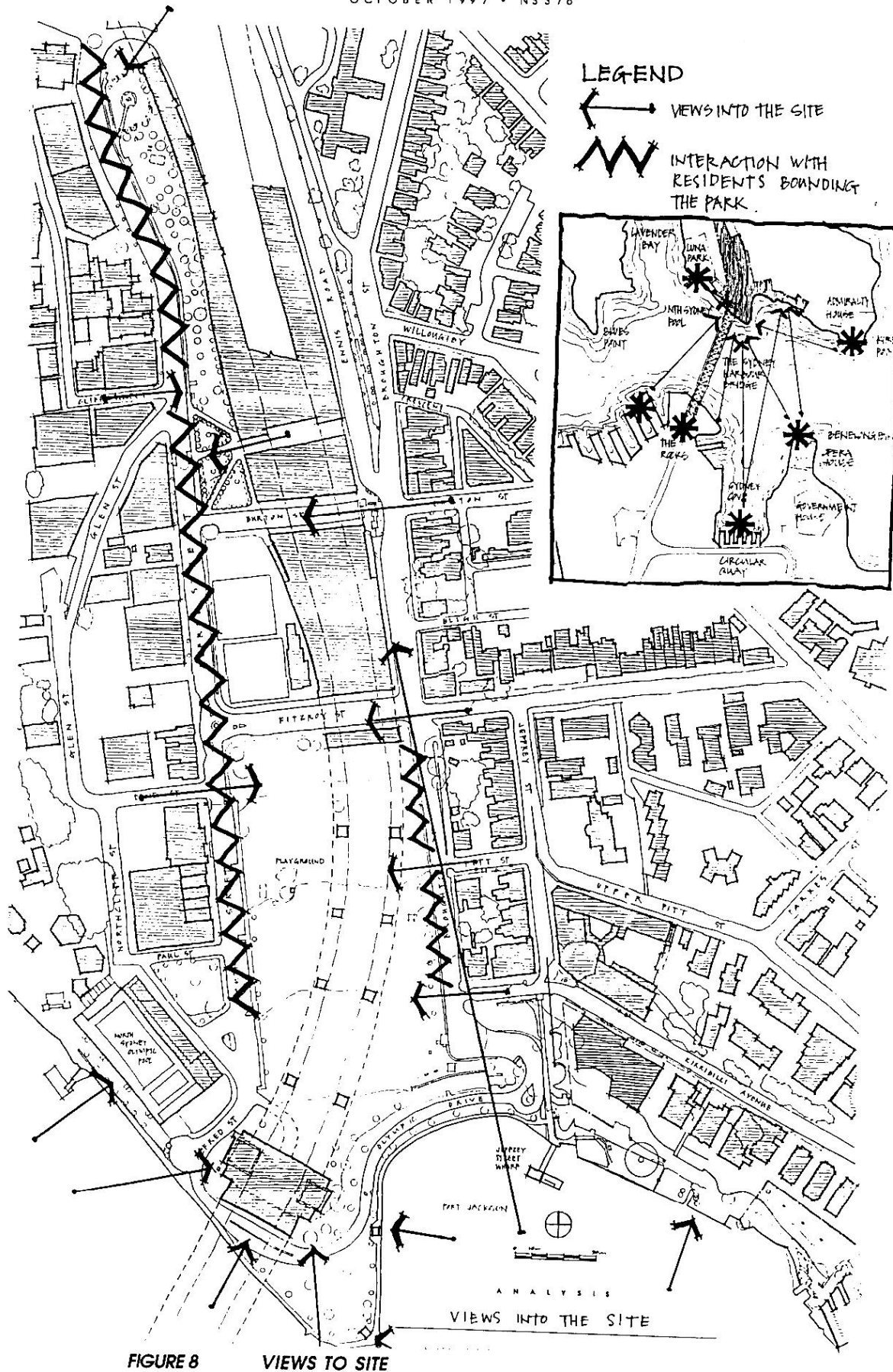
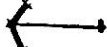



FIGURE 7 VIEWS FROM SITE



LEGEND

-  VIEWS INTO THE SITE
-  INTERACTION WITH RESIDENTS BOUNDING THE PARK

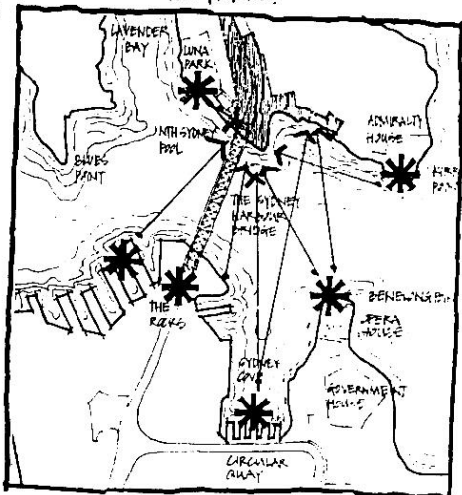
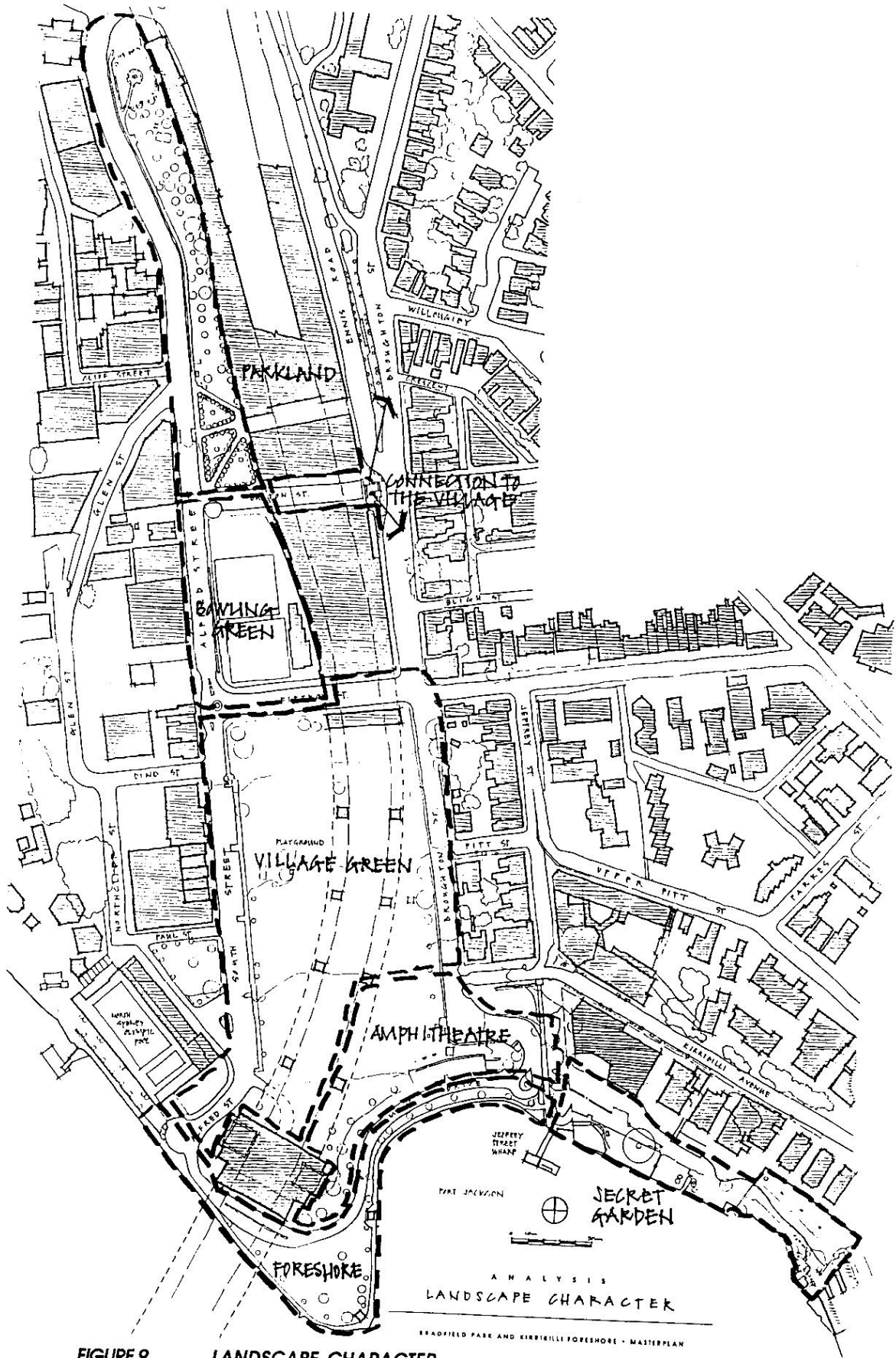
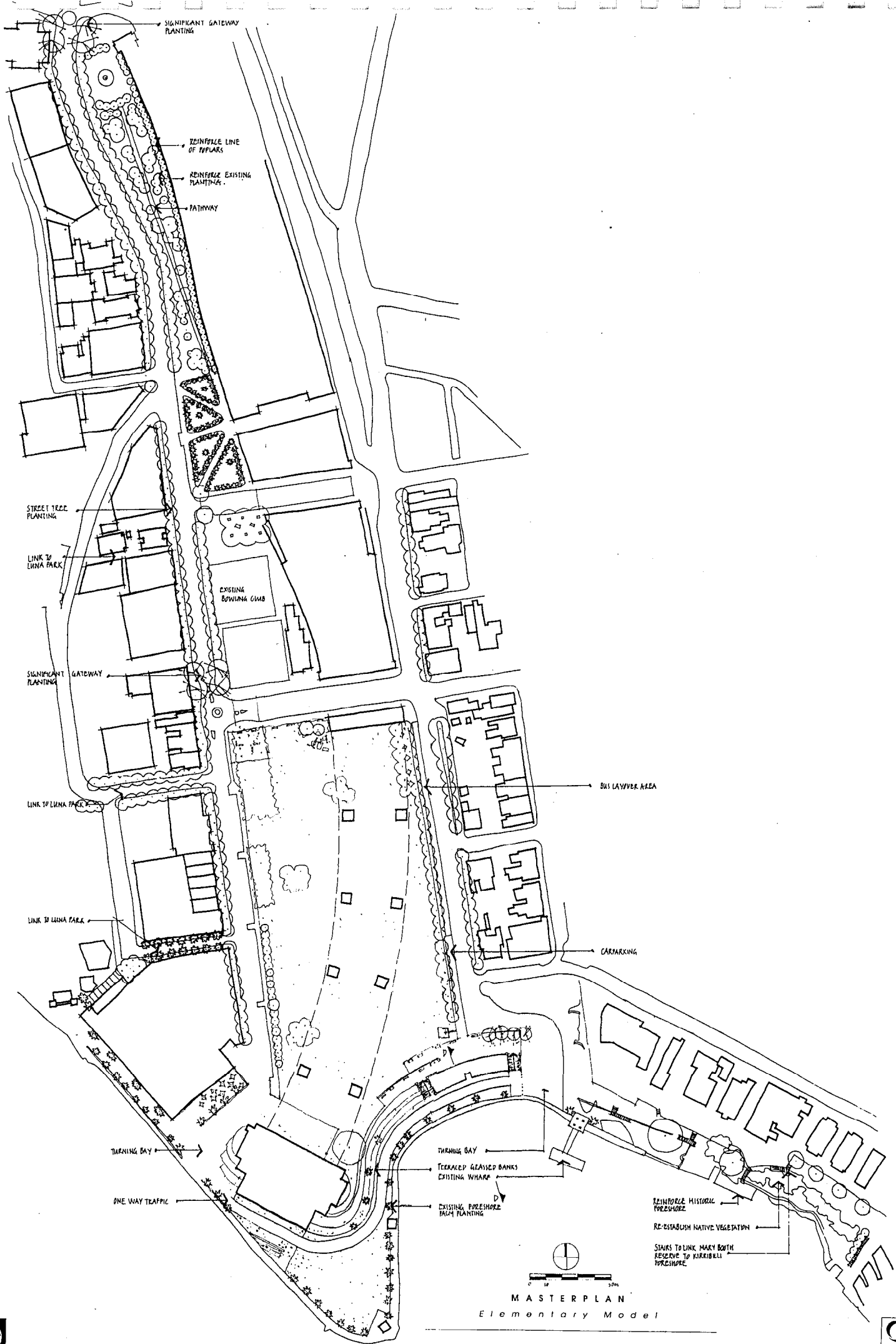


FIGURE 8 VIEWS TO SITE

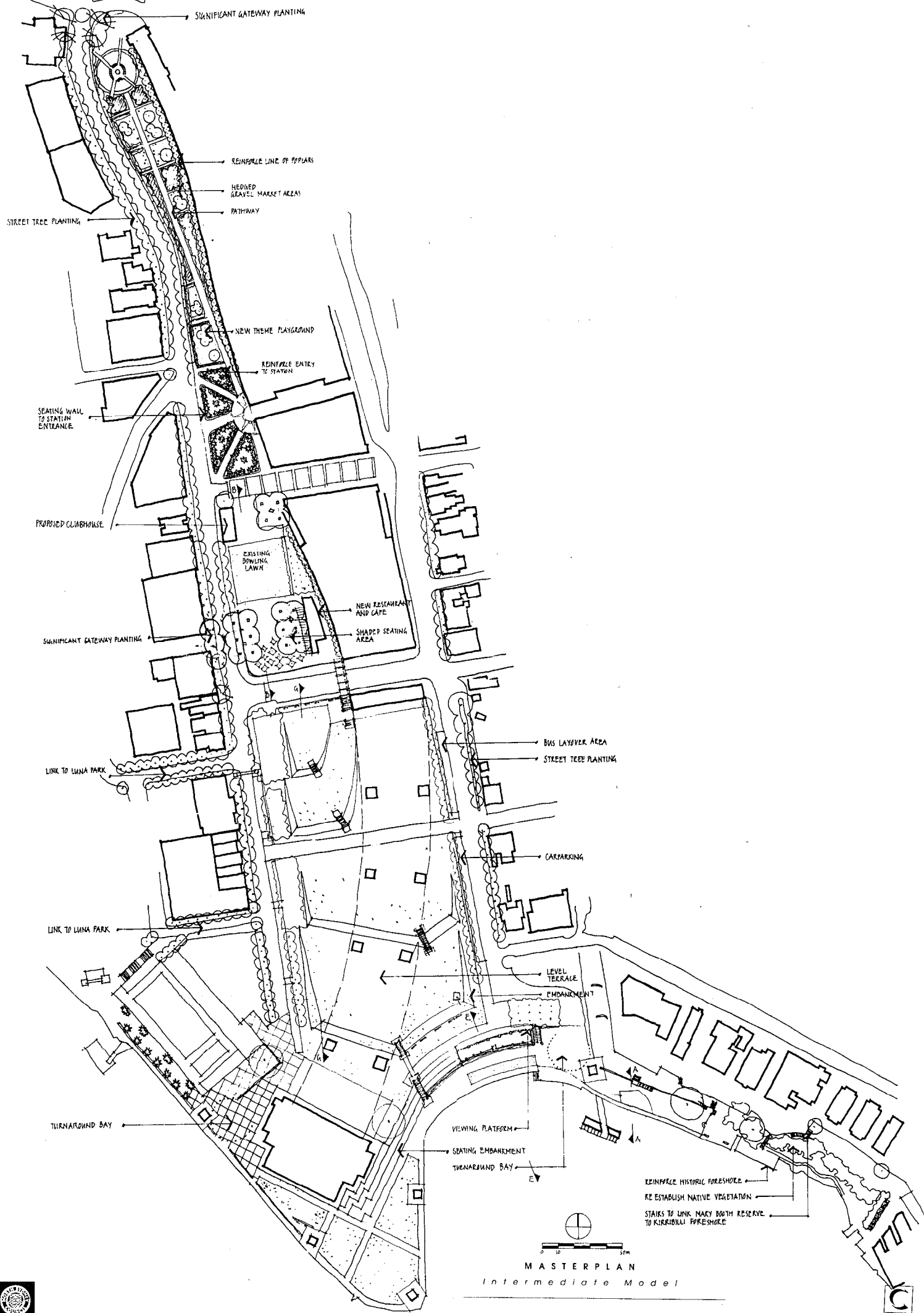
ANALYSIS
VIEWS INTO THE SITE

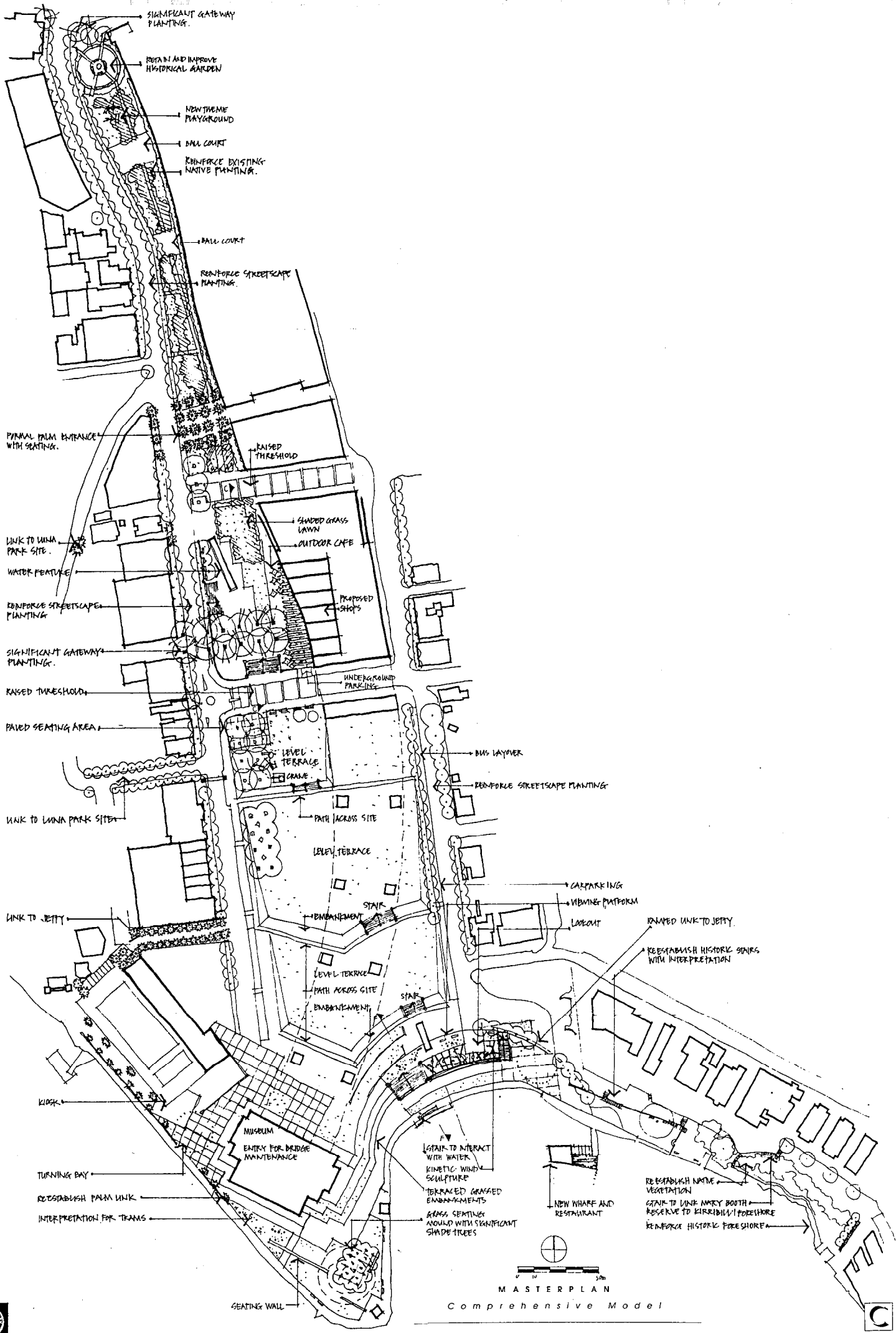




MASTER PLAN
Elementary Model

BRADFIELD PARK AND KIRRIBILLI FORESHORE - MASTERPLAN





BRADFIELD PARK AND KIRRIBILLI FORESHORE

M A S T E R P L A N

CONSULTATION RECORD

NAME	ORGANISATION	TITLE	DATE	INTEREST
Richard Roberts	Kirribilli Ex-Servicemen's Club (RSL/Bowling Club)		28.10.97	Future of current Bowling Club site
Greg Smallhorn	RTA Bridge Services		20.10.97	Bridge service programme and works
Sgt John Ruddy	North Sydney Police		23.10.97	
Tony Lehmann	NSC - Traffic Engineer		8.10.97 5.11.97	Reconfiguration of roundabout Jeffrey's St Wharf
Norm Boyle	North Sydney Olympic Pool	Manager	8.10.97	
Terry Walk	Milson's Point Precinct Committee	President	9.10.97	
Bob Vagg	Lavender Bay Precinct Committee	President	9.10.97	
Joan Street	Lavender Bay Precinct Committee	Secretary	10.10.97	
Joan Modder	Resident		17.10.97	sandstone cliffs, Kirribilli Foreshore
Therese Delanty	Resident		14.10.97	
Mike Rolfe	Sydney Harbour Foreshores Committee		14.10.97	Kirribilli Foreshore - Lots 63/65 development
Beverly Atkinson	Resident		13.10.97 15.10.97	Kirribilli foreshore, relics, Luna Park connections, incremental and sensitive approach to Park design



CLOUSTON

BRADFIELD PARK AND KIRIBILLI FORESHORE

M A S T E R P L A N

CONSULTATION RECORD

NAME	ORGANISATION	TITLE	DATE	INTEREST
Judy Ambler	Resident			
Mark Robinson	NSW Heritage Office		13.10.97	
Daniel Purser / Chris	Taxis Afloat		13.10.97	
Sudhir Warriar	Rosman Ferries	General Manager	13.10.97	
Roslyn Strong	Australian Heritage Office		13.10.97	
Mathew Devine	National Trust of Australia (NSW)	Heritage Architect	13.10.97	
Stephen Davies	National Trust of Australia (NSW)	Dep. Ex. Director	13.10.97	
Tony	National Trust of Australia (NSW)	Head of Conservation		
Bob Allen	Sydney Harbour Tunnel Authority		13.10.97	
Roger Graham	NSW Bus and Coach Association			
John Kelly	AAT Kings Tours			in charge of tourist vehicle operators
Roger Wilson	STA			bus terminal movements
Alison Lloyd	Resident		14.10.97	re: extent of site/name of site
Joan Domillinj	Resident	landscape heritage consultant - Opera House	15.10.97 5.1.98	prepared the nomination for World Heritage Listing for Opera House Public exhibition



CLOUSTON

BRADFIELD PARK AND KIRRIBILLI FORESHORE

M A S T E R P L A N

CONSULTATION RECORD

NAME	ORGANISATION	TITLE	DATE	INTEREST
Aurora Naroni Ross Walker	RTA		16.10.97	Conservation Plan for Bridge Heritage items concerned with bridge
Steven Berry	Resident / Environmental Planner		16.10.97	
Brian Evesson	Member of Historical Society	President Clr		
Ian Kiernan	Clean-up Australia		20.10.97	
Rob Butterworth	Sydney Harbour Tunnel		20.10.97	
Clarisa Kwan	Resident		19.10.97	barbeque facilities
Christopher McLelland	Resident		20.10.97	concerns of closing Olympic Drive
Esme Blackmore	Society for Growing Native Plants		4.11.97	need to establish microclimate
Ross Doig	Society for Growing Native Plants			
Chris Waterhouse	Telstra		4.12.97	Sydney Area planning and Development plants - Alfred St and Burton and Fitzroy St
I Crkovski	AGL	Land Services Manager	27.10.97	



CLOUSTON

BRADFIELD PARK AND KIRRIBILLI FORESHORE

M A S T E R P L A N

CONSULTATION RECORD

NAME	ORGANISATION	TITLE	DATE	INTEREST
Matthew King	Creative Solutions		4.11.97 17.11.97 19.11.97 24.11.97	Environmental issues' bridge Internet site
Sue Hicks	Mosman Daily	Publicity		
Fiona Brown	Sydney weekly	Publicity		
Mike Mackay	MIX106.5	Publicity	23.10.97	interested in outside broadcast at public launch
Celeste Pena / Ken Hamilton	2MBS-FM	Publicity		
Cameron White	Heritage Office		21.10.97	
Jane McAloon	DLWC		23.10.97	Luna Park proposal ensure LP proposal integrates with BP Plan
Abigail Goldberg	DUAP	Design Advisory Service	5.11.97 13.11.97	Commissioned by DLWC to develop Luna park options
Nick Hollow	Keys Young		5.11.97	Concepts for Kirribilli urban design by 11.11
Paolo Totara	SMH	Urban Design	23.10.97	keen to be involved
Christine Whittlemore	Public Works Dept	Landscape Architect		Representing Heritage branch Sydney Harbour Bridge Conservation



CLOUSTON

BRADFIELD PARK AND KIRRIBILLI FORESHORE

M A S T E R P L A N

CONSULTATION RECORD

NAME	ORGANISATION	TITLE	DATE	INTEREST
Julie O'Rourke	State Transit Authority	Strategic Planner	21.10.97 5.11.97	Timetables/bus use of Olympic Drive
Martin Bass	NSC Precinct Manager	Precincts Publicity	23.10.97	
Geraldine O'Brien	SMH	Heritage	23.10.97	
Robin Weedon	North Shore recreation Network	Disabled	5.11.97	
Elizabeth Fowler		history		
Brett Eyde Matthew Mate	RTA Bridge Services	Crane	11.11.97	Crane dimensions
Steve Carey	DUAP			Defer to Petula Samios
Glyn Evans	Energy Australia		14.11.97	
B & B Jackson				Aboriginal sand/artwork Markets
Deborah Johnson	Dept Abor. Affairs		18.11.97	
Eric Stephenson	Resident		18.11.97	



CLOUSTON

BRADFIELD PARK AND KIRRIBILLI FORESHORE MASTERPLAN

BRADFIELD PARK AND KIRRIBILLI FORESHORE

M A S T E R P L A N

CONSULTATION RECORD

NAME	ORGANISATION	TITLE	DATE	INTEREST
Mary Stephens	Resident		19.11.97 to 15.5.98	Kirribilli Foreshore
Sue Jones	Resident	events	25.10.97	
Piers Truter	Resident		25.10.97	bike paths
Charley Mc Carley	DLWC			Luna Park
Ann Cameron	Assessor Lot 69		15.12.97	wants us to comment on plans for lot 69 - overshadowing etc
Michael Langdon			16.12.97	MW?NSC
Deborah John son	NSW Dept of Abor Affairs	Abor heritage	8.12.97	Abor heritage
Alla Kamaralli	Resident		21.5.98	Kirribilli Foreshore - lots 63/65 Development
Julianne Baustead	Hassell Group			North Sydney Olympic Pool
Alison Lloyd	Resident		27.2.98	Kirribilli foreshore history



CLOUSTON

BRADFIELD PARK AND KIRRIBILLI FORESHORE MASTERPLAN

**BRADFIELD PARK AND KIRIBILLI FORESHORE MASTERPLAN
ON-SITE QUESTIONNAIRE**

Interview location BP. Time 1.45.

Date _____ Weather _____

Single or group _____ Age group (eg teenager, elderly) 20s.

1. How often do you visit the park?
every day?
more than once a week?
once a month?
less than 5 times a year
first visit

2. Where do you live? Suburb
Country NSW
Interstate
Overseas Bondi.

3. Do you work study in the North Sydney area? Yes/ No

4. When do you visit the park? weekends or weekdays?

5. Do you come here at other times of the day? No
If yes? when

6. What activities do you undertake in the park?

7. Which part(s) of the Park do you use most? N20. → Kiri. sheps.

8. How long do you plan to stay in the park today?
less than 1 hour $\frac{3}{4}$ → 1hr.
1 hour or more
just passing through (going where?) 10'clock - 2.

9. What 2 things do you LIKE MOST about the park?
Sunny,

10. What 2 things do you DISLIKE about the park?
removal of fig tree.

11. What suggestions do you have for improvements to the park?
seats, trees! shade along edge Alfred St. -kids
amenities - more tables windy school kids - kicking ball around.
 change lunch hour.

12. Do you have any other comments about the park?
unmetered parking spots.
-erosion.

SUPPLEMENTARY

If questionnaire is at Jeffrey's street ferry wharf or bus stops:

- S1. Where did you come from on this trip (origin and bus/ferry terminal)?
(Or where are you going to if waiting for a bus/ferry)
- S2. How regularly do you use the bus/ferry? Daily?
- S3. Which other transport connections do you make - bus or ferry etc?
- S4. Do you have any comments on the bus/ferry service at Jeffrey's Street Wharf?

BRADFIELD PARK AND KIRRIBILLI FORESHORE

M A S T E R P L A N

BUS MOVEMENT SURVEY

Monitoring on the 25th November 1997 2.55pm - 5.25 pm

Bus Layover Position 1 (Olympic Drive, front of North Pylon)

TIME	NUMBER OF BUSES	WAITING TIME (written when bus left)
2.55 pm	1	
3.00 pm	1	7 min
3.05 pm	0	
3.10 pm	0	
3.15 pm	1	2 min
3.20 pm	0	
3.25 pm	0	
3.30 pm	3	2 min
3.35 pm	2	5 min / 8 min
3.40 pm	0	
3.45 pm	0	
3.50 pm	0	
3.55 pm	1	
4.00 pm	1	5 min
4.05 pm	2	2 min / 3 min
4.10 pm	0	
4.15 pm	1	
4.20 pm	1	
4.25 pm	1	
4.30 pm	1	
4.35 pm	2	25 min
4.40 pm	2	
4.45 pm	3	6 min
4.50 pm	3	
4.55 pm	3	
5.00 pm	3	15 min / 23 min
5.05 pm	1	
5.10 pm	1	
5.15 pm	2	6 min
5.20 pm	1	
5.25 pm	1	30 min

BRADFIELD PARK AND KIRRIBILLI FORESHORE

M A S T E R P L A N

BUS MOVEMENT SURVEY

Monitoring on the 25th November 1997 2.55pm - 5.25 pm

Bus Layover Position 2 (Olympic Drive)

TIME	NUMBER OF BUSES	WAITING TIME (written when bus left)
2.55 pm	0	
3.00 pm	1	3 min
3.05 pm	0	
3.10 pm	1	
3.15 pm	2	8 min
3.20 pm	2	
3.25 pm	2	15 min
3.30 pm	1	13 min
3.35 pm	1	
3.40 pm	1	
3.45 pm	2	12 min
3.50 pm	1	
3.55 pm	6	12 min / 5 min
4.00 pm	6	6 min
4.05 pm	5	16 min / 13 min
4.10 pm	4	6 min / 15 min
4.15 pm	3	22 min
4.20 pm	3	20 min / 15 min
4.25 pm	5	13 min / 7 min
4.30 pm	7	2 min
4.35 pm	9	22 min / 7 min
4.40 pm	6	4 min / 20 min
4.45 pm	5	2 min / 28 min
4.50 pm	6	23 min / 8 min
4.55 pm	6	15 min
5.00 pm	3	10 min
5.05 pm	4	
5.10 pm	5	3 min / 1 min
5.15 pm	4	2 min / 12 min
5.20 pm	3	6 min
5.25 pm	7	

