

5.1. Design Review - Young Street Cycling, Walking and Streetscape Upgrades

AUTHOR: Max White, Sustainable Transport Project Coordinator

ENDORSED BY: Jon Higlett, Acting Director Engineering and Property Services

ATTACHMENTS:

1. Attachment A Young Street Concept Design Flyer [5.1.1 - 1 page]
2. Attachment B Young Street General Arrangements [5.1.2 - 7 pages]

PURPOSE:

The purpose of this report is for final traffic committee review of Young Street Cycling, Walking and Streetscape Upgrades designs in preparation for construction.

EXECUTIVE SUMMARY:

- Young Street Cycling, Walking and Streetscape Upgrades (Young Street Upgrades) will provide cycling, walking and streetscape upgrades along Young Street between Grosvenor Street and Sutherland Street, Cammeray.
- On Monday 28 March 2022, Council resolved to proceed to tender and construction documentation stage and for the North Sydney Traffic Committee to review the final designs.
- This report provides the concept design flyer (Attachment A) and Civil Engineering Plan (Attachment B) for the Traffic Committee to review.

FINANCIAL IMPLICATIONS:

- NSW State Government is contributing 72% of the cost for construction.
- North Sydney Council is contributing 28% of the cost for construction.

RECOMMENDATION:

1. THAT the North Sydney Traffic Committee endorse the proposal for a 2.4m wide separated cycleway on the western side of Young Street, between Sutherland Street and Grosvenor Street.

LINK TO COMMUNITY STRATEGIC PLAN

The relationship with the Community Strategic Plan is as follows:

2. Our Built Infrastructure

2.2 Vibrant public domains and villages

2.3 Prioritise sustainable and active transport

2.4 Efficient traffic mobility and parking

4. Our Social Vitality

4.1 North Sydney is connected, inclusive, healthy and safe

BACKGROUND

Council's North Sydney Integrated Cycling Strategy (2014) aims to deliver a cycling network accessible to people of all ages and cycling abilities and to enable more people in the community to choose cycling for day-to-day transport needs, particularly for short trips of between 2-5km.

The Young Street Upgrades form an extension of the Strategy's Route 2: Sydney Harbour Bridge to Neutral Bay.

CONSULTATION REQUIREMENTS

Community engagement has occurred in accordance with Council's *Community Engagement Protocol*. The detail of this report provides the outcomes from the engagement for Council to consider prior to adoption.

The final concept designs were publicly exhibited to the community from 10 May to 10 June 2021 (33 days) and an outcomes report was provided to Council 28 March 2022.

Impact on Pedestrians: Additional signalized pedestrian crossings at Belgrave and Young, pavement upgrades will have a positive impact on cyclist user experience and safety.

Impact on Parking: There is an estimated loss of 7 parking spaces on Young Street, and 23 during the PM Peak (3pm to 7pm) and 13 during am peak (6am to 10am) on Belgrave Street.

DETAIL

The Young Street Upgrades will deliver improvements to cycling and walking infrastructure as well as streetscape improvements. The upgrades are located along Young Street, Cammeray, between Grosvenor Street and Sutherland Street.

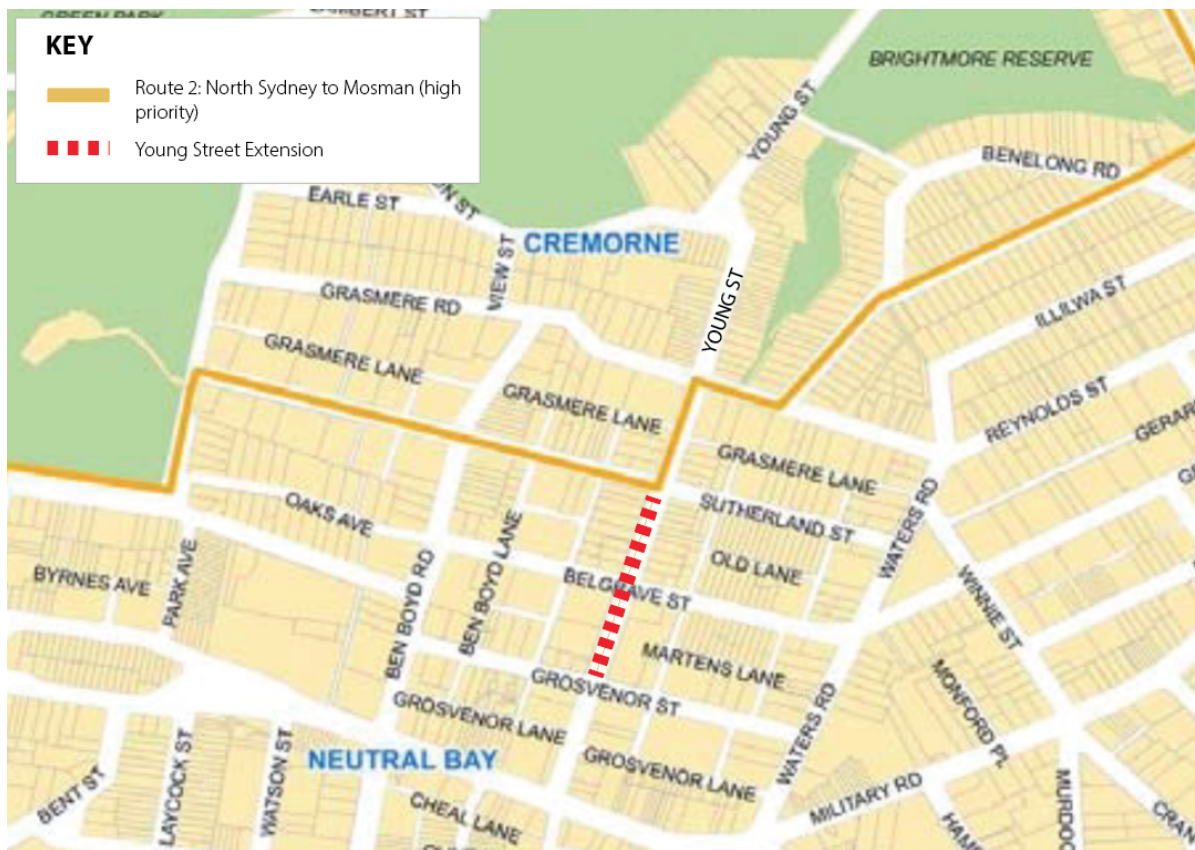


FIGURE 1. Existing cycleway along Sutherland Street, Young Street North and Grasmere Road in yellow. Young Street Cycling, Walking and Streetscape Upgrades (the project area) in dashed red.

Project Scope

The scope of the project in summary will involve the following works:

- construction of 250m of a bidirectional combination of separated and on road cycle path from Sutherland Street to Grosvenor Street.
- concrete kerbs will separate the parking and cycle path areas.
- narrowing of road width to accommodate cycleway.
- installation of protected (signalised) pedestrian crossings over Young Street at the intersection with Belgrave Street.
- pedestrian access ramps at the intersection of Young Street and Belgrave Street would be upgraded.
- adding right turn lanes on Young Street at the intersection with Belgrave Street to reduce congestion at the intersection during peak periods.
- new raised pedestrian crossing over Sutherland Street to the immediate west of the intersection with Young Street.



FIGURE 1. Layout plan showing key project features (yellow boxes indicate loss of parking space locations because of traffic signal upgrade)

Improvements	Impacts
<ul style="list-style-type: none"> • reduced vehicle speeds and noise on Young Street • increased safety for people walking and crossing roads • higher amenity pedestrian environment/public space. The cycle path will provide a buffer between footpaths and road areas • people who feel unable to cycle on road will have the option to cycle to the Neutral Bay village by separated path • reduced congestion on Belgrave Street at the intersection with Young Street 	<ul style="list-style-type: none"> • narrowed lanes on Young Street will reduce the space available for parked cars to exit • Estimated seven fewer permanent car parking spaces available Young Street. • 23 fewer spaces on Belgrave Street during PM peak (3pm to 7pm weekdays) due to clearway extensions (existing parking restrictions retained at other times) • 13 fewer spaces on Belgrave Street during the am peak (6am to 10am, weekdays) due to clearway extensions (existing parking restrictions retained at other times).

Consultation

A 33-day public exhibition period was held 10 May to 10 June 2021. A total of 89 submissions were received. Outcomes included:

- 53% indicated overall support for the proposal; 10% indicated overall objection to the proposal, 1% supported the proposal in long term (but not in medium term); 36% commented on specific elements of the proposal (i.e. did not indicate if they supported the project overall).
- 34% of submissions came from residents/businesses of directly affected streets; 20% indicated overall support for the proposal; 23% indicated overall objection to the proposal and 57% commented on specific areas of the proposal.
- 2 of the submissions were from Precinct Committees (via minutes)

An outcomes report was taken to 28 March 2022 Council meeting (8.12. Young Street Walking Cycling and Streetscape Upgrades) and it was resolved that:

1. THAT detailed design for tender and construction of the Young Street Walking Cycling and Streetscape Upgrades (Sutherland Street to Grosvenor Street) commence.

2. THAT the final detailed design for the project be subject to approval of the North Sydney Traffic Committee.

As per resolution 2, this report provides the concept design flyer (Attachment A) and General Arrangements Plan (Attachment B) for North Sydney Traffic Committee final review.

Conclusion

North Sydney Council has conducted community consultation on the Young Street Cycling, Walking and Streetscape Upgrades and received majority support for the project. Council resolved for the traffic committee to review the final designs before proceeding to construction.

The Young Street Cycling, Walking and Streetscape Upgrades will provide a safe connection for bike riders between the existing Priority Route 2 Sydney Harbour Bridge to Neutral Bay and Neutral Bay town centre in line with the commitments in the CSP and North Sydney Integrated Cycling Strategy 2014.

This report recommends the Traffic Committee review the final designs in order for Council staff to proceed to detail design for tender and construction purposes.

YOUNG STREET WALKING, CYCLING AND STREETScape IMPROVEMENTS



Council is seeking feedback on proposed upgrades to walking and cycling access on Young Street, between Sutherland Street and Grosvenor Street.

“HAVE YOUR SAY”

You can provide feedback via the following options:

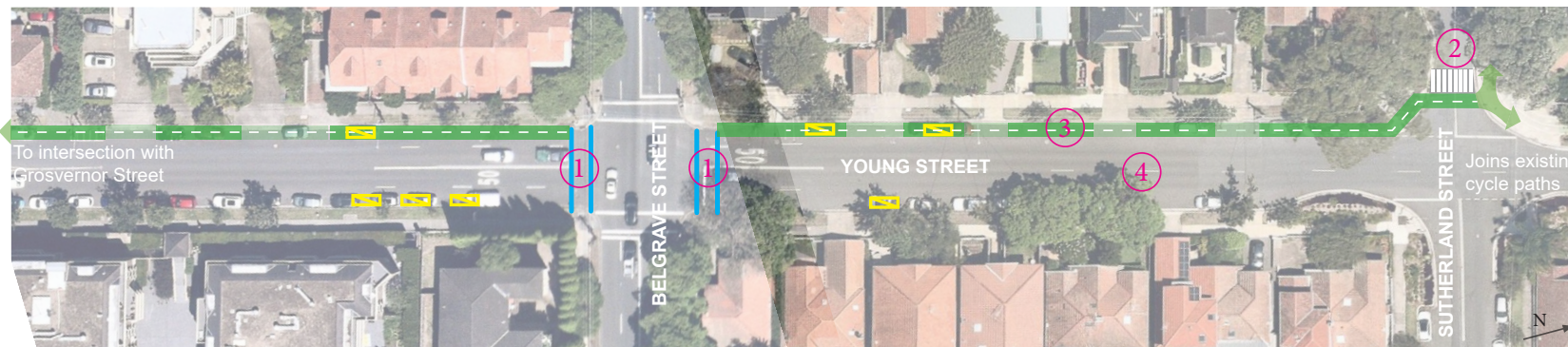
ON-LINE <https://yoursay.northsydney.nsw.gov.au/young-walk-cycle>

WRITTEN: North Sydney Council
PO Box 12
North Sydney NSW 2059

EMAIL yoursay@northsydney.nsw.gov.au

Key project features:

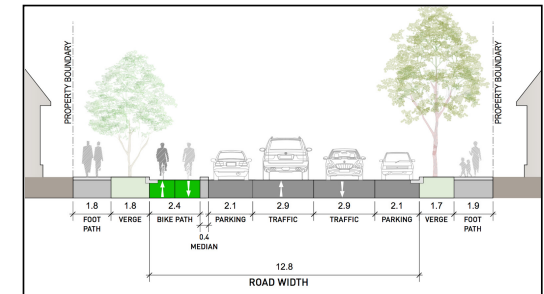
- new pedestrian crossing points over Young Street at the intersection with Belgrave Street ①
- raised pedestrian crossing over Sutherland Street ②
- continuation of the Young Street cycle path and additional landscaping ③
- increased clearway distances on Belgrave Street (required for traffic signal update)
- reduced lane widths on Young Street ④
- 7 car spaces removed on Young Street (to facilitate traffic signal update)
- new landscaping along the project corridor



Anticipated Improvements	Anticipated Impacts
<ul style="list-style-type: none"> • Reduced vehicle speeds and vehicle noise on Young Street • Safer road crossings and improved access for pedestrians • Higher amenity pedestrian areas and public space. The cycle path will provide a buffer between the footpaths and road • Community members who feel unable to cycle on-road will have the option to cycle to the Neutral Bay village by separated bike path • Reduced congestion on Belgrave Street at the intersection with Young Street 	<ul style="list-style-type: none"> • Narrowed lanes on Young Street will reduce the space available to exit parked cars • 7 fewer permanent car parking spaces available Young St • 23 fewer spaces on Belgrave Street during pm peak (3pm to 7pm) due to clearway extensions (existing parking restrictions retained at other times) • 13 fewer spaces on Belgrave Street during the am peak (6am to 10am) due to clearway extensions (existing parking restrictions retained at other times)



Artist's impression of Young Street walking, cycling and streetscape improvements



Proposed Typical section: Young Street

A000001

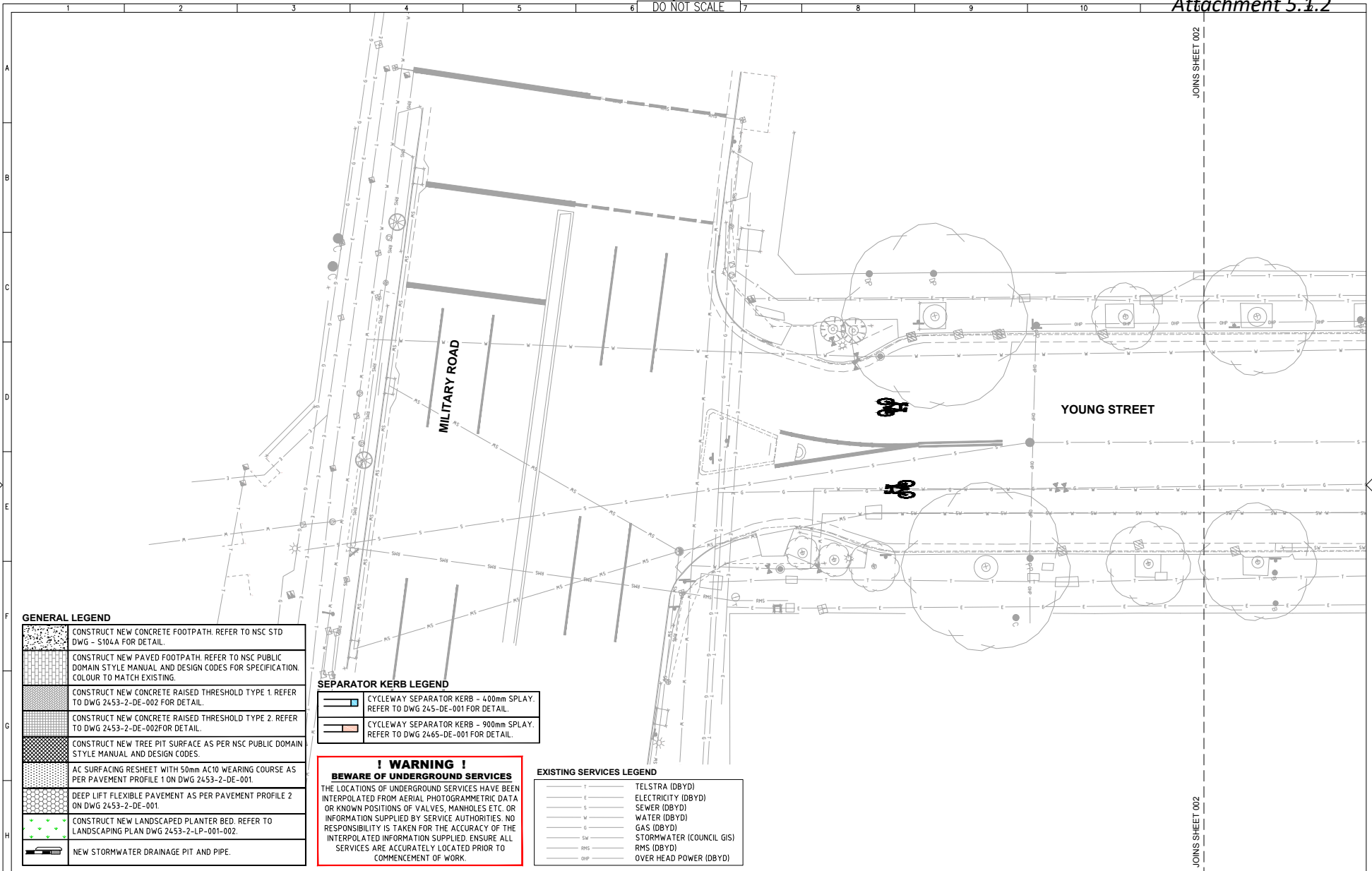


COMMUNITY CONSULTATION

Traffic Committee Meeting - 21 April 2023 Agenda

FOR MORE INFORMATION & STATUS UPDATES: Go to <https://yoursay.northsydney.nsw.gov.au/young-walk-cycle> or call 9936 8100

DO NOT SCALE



GENERAL LEGEND

	CONSTRUCT NEW CONCRETE FOOTPATH. REFER TO NSC STD DWG - S104A FOR DETAIL.
	CONSTRUCT NEW PAVED FOOTPATH. REFER TO NSC PUBLIC DOMAIN STYLE MANUAL AND DESIGN CODES FOR SPECIFICATION COLOUR TO MATCH EXISTING.
	CONSTRUCT NEW CONCRETE RAISED THRESHOLD TYPE 1. REFER TO DWG 2453-2-DE-002 FOR DETAIL.
	CONSTRUCT NEW CONCRETE RAISED THRESHOLD TYPE 2. REFER TO DWG 2453-2-DE-002 FOR DETAIL.
	CONSTRUCT NEW TREE PIT SURFACE AS PER NSC PUBLIC DOMAIN STYLE MANUAL AND DESIGN CODES.
	AC SURFACING RESHEET WITH 50mm AC10 WEARING COURSE AS PER PAVEMENT PROFILE 1 ON DWG 2453-2-DE-001.
	DEEP LIFT FLEXIBLE PAVEMENT AS PER PAVEMENT PROFILE 2 ON DWG 2453-2-DE-001.
	CONSTRUCT NEW LANDSCAPED PLANTER BED. REFER TO LANDSCAPING PLAN DWG 2453-2-LP-001-002.
	NEW STORMWATER DRAINAGE PIT AND PIPE.

SEPARATOR KERB LEGEND

	CYCLEWAY SEPARATOR KERB - 400mm SPLAY. REFER TO DWG 245-DE-001 FOR DETAIL.
	CYCLEWAY SEPARATOR KERB - 900mm SPLAY. REFER TO DWG 2465-DE-001 FOR DETAIL.

**! WARNING !
BEWARE OF UNDERGROUND SERVICES**
THE LOCATIONS OF UNDERGROUND SERVICES HAVE BEEN INTERPOLATED FROM AERIAL PHOTOGRAMMETRIC DATA OR KNOWN POSITIONS OF VALVES, MANHOLES ETC. OR INFORMATION SUPPLIED BY SERVICE AUTHORITIES. NO RESPONSIBILITY IS TAKEN FOR THE ACCURACY OF THE INTERPOLATED INFORMATION SUPPLIED. ENSURE ALL SERVICES ARE ACCURATELY LOCATED PRIOR TO COMMENCEMENT OF WORK.

EXISTING SERVICES LEGEND

	TELSTRA (DBYD)
	ELECTRICITY (DBYD)
	SEWER (DBYD)
	WATER (DBYD)
	GAS (DBYD)
	STORMWATER (COUNCIL GIS)
	RMS (DBYD)
	OVER HEAD POWER (DBYD)

No.	Revision	Revised on DWG	By	Checked	Approved	Date	Notes
C	ISSUED FOR TENDER		GH	NP		08/03/18	
B	ISSUED FOR TENDER		GH	NP		29/11/17	
A	PRELIMINARY ISSUE FOR COMMENT		GH	NP		13/10/17	

0 1 2 3 4 5m
SCALE 1:100
A1 UNREDUCED

Copyright
This document is the intellectual property of North Sydney Council.
The document may only be used for the purposes for which it was prepared and no other use, reproduction or distribution is permitted without the written consent of North Sydney Council.

10 Regent Street
Chippendale NSW 2008

p 02 9282 9900
f 02 9282 9277

COMPLETE

www.completeurban.com.au

Client and Job
NORTH SYDNEY COUNCIL
ROUTE 2 CYCLEWAY & STREETScape IMPROVEMENT PLAN
STAGE 2 YOUNG STREET - MILITARY ROAD TO SUTHERLAND STREET

Scale 1:100 @ A1

Drawn	R.C./M.L.	Designed	R.C./M.L.
Checked	N.P.	Design	I.G.
Approved		Check	

Title
**GENERAL ARRANGEMENT PLAN
SHEET 1 OF 7**

Proj. No. 2453-2-GA-001

Sheet No. A1

Rev. C

DO NOT SCALE

SEPARATOR KERB LEGEND

	CYCLEWAY SEPARATOR KERB - 400mm SPLAY. REFER TO DWG 245-DE-001 FOR DETAIL.
	CYCLEWAY SEPARATOR KERB - 900mm SPLAY. REFER TO DWG 2465-DE-001 FOR DETAIL.

GENERAL LEGEND

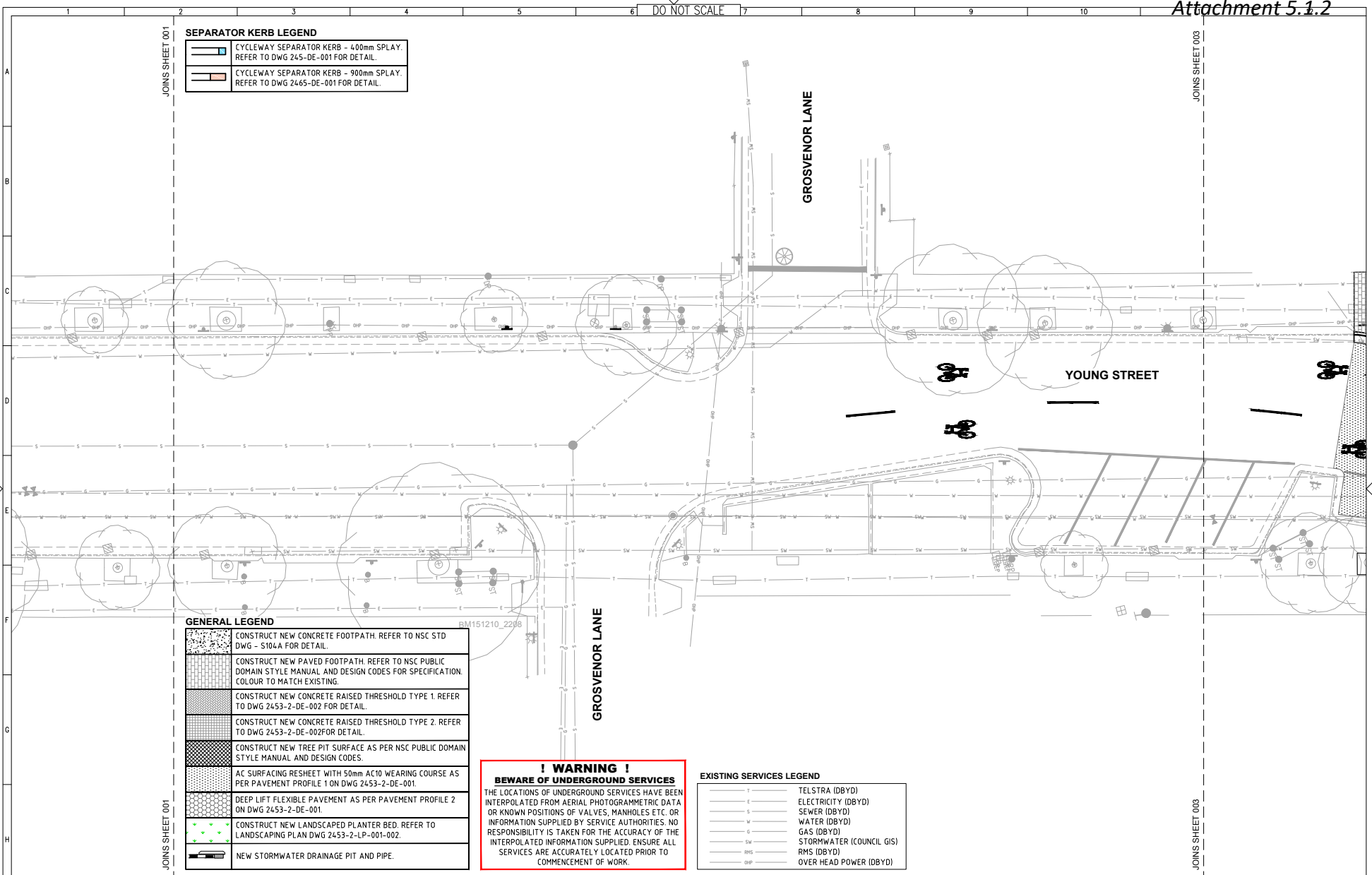
	CONSTRUCT NEW CONCRETE FOOTPATH. REFER TO NSC STD DWG - S104A FOR DETAIL.
	CONSTRUCT NEW PAVED FOOTPATH. REFER TO NSC PUBLIC DOMAIN STYLE MANUAL AND DESIGN CODES FOR SPECIFICATION. COLOUR TO MATCH EXISTING.
	CONSTRUCT NEW CONCRETE RAISED THRESHOLD TYPE 1. REFER TO DWG 2453-2-DE-002 FOR DETAIL.
	CONSTRUCT NEW CONCRETE RAISED THRESHOLD TYPE 2. REFER TO DWG 2453-2-DE-002 FOR DETAIL.
	CONSTRUCT NEW TREE PIT SURFACE AS PER NSC PUBLIC DOMAIN STYLE MANUAL AND DESIGN CODES.
	AC SURFACING RESHEET WITH 50mm AC10 WEARING COURSE AS PER PAVEMENT PROFILE 1 ON DWG 2453-2-DE-001.
	DEEP LIFT FLEXIBLE PAVEMENT AS PER PAVEMENT PROFILE 2 ON DWG 2453-2-DE-001.
	CONSTRUCT NEW LANDSCAPED PLANTER BED. REFER TO LANDSCAPING PLAN DWG 2453-2-LP-001-002.
	NEW STORMWATER DRAINAGE PIT AND PIPE.

**! WARNING !
BEWARE OF UNDERGROUND SERVICES**

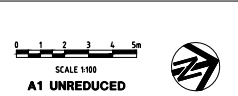
THE LOCATIONS OF UNDERGROUND SERVICES HAVE BEEN INTERPOLATED FROM AERIAL PHOTOGRAMMETRIC DATA OR KNOWN POSITIONS OF VALVES, MANHOLES ETC. OR INFORMATION SUPPLIED BY SERVICE AUTHORITIES. NO RESPONSIBILITY IS TAKEN FOR THE ACCURACY OF THE INTERPOLATED INFORMATION SUPPLIED. ENSURE ALL SERVICES ARE ACCURATELY LOCATED PRIOR TO COMMENCEMENT OF WORK.

EXISTING SERVICES LEGEND

	TELSTRA (DBYD)
	ELECTRICITY (DBYD)
	SEWER (DBYD)
	WATER (DBYD)
	GAS (DBYD)
	STORMWATER (COUNCIL GIS)
	RMS (DBYD)
	OVER HEAD POWER (DBYD)



No.	Revision	Revised on DWG	By	Checked	Approved	Date
C	ISSUED FOR TENDER		GH	NP		08/03/18
B	ISSUED FOR TENDER		GH	NP		29/11/17
A	PRELIMINARY ISSUE FOR COMMENT		GH	NP		13/10/17



10 Regent Street
Chippendale NSW 2008
p 02 9282 9900
f 02 9282 9277

COMPLETE

www.completeurban.com.au

Client and Job	NORTH SYDNEY COUNCIL ROUTE 2 CYCLEWAY & STREETScape IMPROVEMENT PLAN STAGE 2 YOUNG STREET - MILITARY ROAD TO SUTHERLAND STREET		
Drawn	R.C./M.L.	Designed	R.C./M.L.
Checked	N.P.	Design Check	I.G.
Approved			
Title	GENERAL ARRANGEMENT PLAN SHEET 2 OF 7		
Drawn	GH	Checked	NP
No.	2453-2-GA-002		Scale
			A1

DO NOT SCALE

EXISTING SERVICES LEGEND

1	TELSTRA (DBYD)
2	ELECTRICITY (DBYD)
3	SEWER (DBYD)
4	WATER (DBYD)
5	GAS (DBYD)
6	STORMWATER (COUNCIL GIS)
7	RMS (DBYD)
8	OVER HEAD POWER (DBYD)

**! WARNING !
BEWARE OF UNDERGROUND SERVICES**

THE LOCATIONS OF UNDERGROUND SERVICES HAVE BEEN INTERPOLATED FROM AERIAL PHOTOGRAMMETRIC DATA OR KNOWN POSITIONS OF VALVES, MANHOLES ETC. OR INFORMATION SUPPLIED BY SERVICE AUTHORITIES. NO RESPONSIBILITY IS TAKEN FOR THE ACCURACY OF THE INTERPOLATED INFORMATION SUPPLIED. ENSURE ALL SERVICES ARE ACCURATELY LOCATED PRIOR TO COMMENCEMENT OF WORK.

CONSTRUCT NEW STANDARD GRATED GULLY PIT WITH 18m PRECAST EKI OVER EXISTING PIPE. REFER TO COUNCIL STD DWG S203 FOR DETAIL.

CONSTRUCT NEW STANDARD GRATED GULLY PIT WITH 1.0m PRECAST EKI. REFER TO COUNCIL STD DWG S203 FOR DETAIL.

CONVERT EXISTING GULLY PIT INTO JUNCTION PIT AS PER DETAIL ON DWG 2453-2-DE-004.

CONSTRUCT NEW STANDARD KERB AND GUTTER (K4). REFER TO COUNCIL STD DWG S101B FOR DETAIL.

CONSTRUCT NEW STANDARD GRATED GULLY PIT WITH 2.4m PRECAST EKI OVER EXISTING PIPE. REFER TO COUNCIL STD DWG S203 FOR DETAIL.

CONVERT EXISTING GULLY PIT INTO JUNCTION PIT AS PER DETAIL ON DWG 2453-2-DE-004.

CONSTRUCT NEW KERB RAMP (O1). REFER TO COUNCIL STD DWG S106 FOR DETAIL. REFER TO DWG 2453-2-SO-001 FOR SETOUT.

CONSTRUCT NEW CONCRETE THRESHOLD RAMP AS PER DETAIL ON 2453-2-DE-002.

CONSTRUCT NEW STANDARD GRATED GULLY PIT WITH 2.4m PRECAST EKI. REFER TO COUNCIL STD DWG S203 FOR DETAIL.

CONSTRUCT NEW STANDARD GRATED GULLY PIT WITH 1.0m PRECAST EKI. REFER TO COUNCIL STD DWG S203 FOR DETAIL.

CONSTRUCT NEW STANDARD KERB AND GUTTER (K1). REFER TO COUNCIL STD DWG S101B FOR DETAIL.

CONSTRUCT NEW KERB RAMP (O3). REFER TO COUNCIL STD DWG S106 FOR DETAIL. REFER TO DWG 2453-2-SO-001 FOR SETOUT.

CONSTRUCT NEW 2.0m LONG CONCRETE CYCLEWAY RAMP (O2). REFER TO DWG 2453-2-SO-001 FOR SETOUT.

CONSTRUCT NEW CYCLEWAY RAMP (O1). REFER TO COUNCIL STD DWG S106 FOR DETAIL. REFER TO DWG 2453-2-SO-001 FOR SETOUT.

TRIM TREE BRANCHES WITHIN CYCLIST ENVELOPE ADJACENT TO CYCLEWAY

RELOCATE MAIL BOXES.

CONSTRUCT NEW SEPARATOR KERB ADJACENT TO PARKING BAY. SETOUT AND CONSTRUCT AS PER TYPICAL PLAN ON DWG 2453-2-GE-003.

GENERAL LEGEND

[Pattern]	CONSTRUCT NEW CONCRETE FOOTPATH. REFER TO NSC STD DWG - S104A FOR DETAIL.
[Pattern]	CONSTRUCT NEW PAVED FOOTPATH. REFER TO NSC PUBLIC DOMAIN STYLE MANUAL AND DESIGN CODES FOR SPECIFICATION. COLOUR TO MATCH EXISTING.
[Pattern]	CONSTRUCT NEW CONCRETE RAISED THRESHOLD TYPE 1. REFER TO DWG 2453-2-DE-002 FOR DETAIL.
[Pattern]	CONSTRUCT NEW CONCRETE RAISED THRESHOLD TYPE 2. REFER TO DWG 2453-2-DE-002 FOR DETAIL.
[Pattern]	CONSTRUCT NEW TREE PIT SURFACE AS PER NSC PUBLIC DOMAIN STYLE MANUAL AND DESIGN CODES.
[Pattern]	AC SURFACING RESHEET WITH 50mm AC10 WEARING COURSE AS PER PAVEMENT PROFILE 1 ON DWG 2453-2-DE-001
[Pattern]	DEEP LIFT FLEXIBLE PAVEMENT AS PER PAVEMENT PROFILE 2 ON DWG 2453-2-DE-001.
[Pattern]	CONSTRUCT NEW LANDSCAPED PLANTER BED. REFER TO LANDSCAPING PLAN DWG 2453-2-LP-001-002.
[Pattern]	NEW STORMWATER DRAINAGE PIT AND PIPE.

CONSTRUCT NEW KERB RAMP (O6). REFER TO COUNCIL STD DWG S106 FOR DETAIL. REFER TO DWG 2453-2-SO-001 FOR SETOUT.

CONSTRUCT NEW STANDARD KERB AND GUTTER (K3). REFER TO COUNCIL STD DWG S101B FOR DETAIL.

CONSTRUCT NEW KERB RAMP (O6). REFER TO COUNCIL STD DWG S106 FOR DETAIL. REFER TO DWG 2453-2-SO-001 FOR SETOUT.

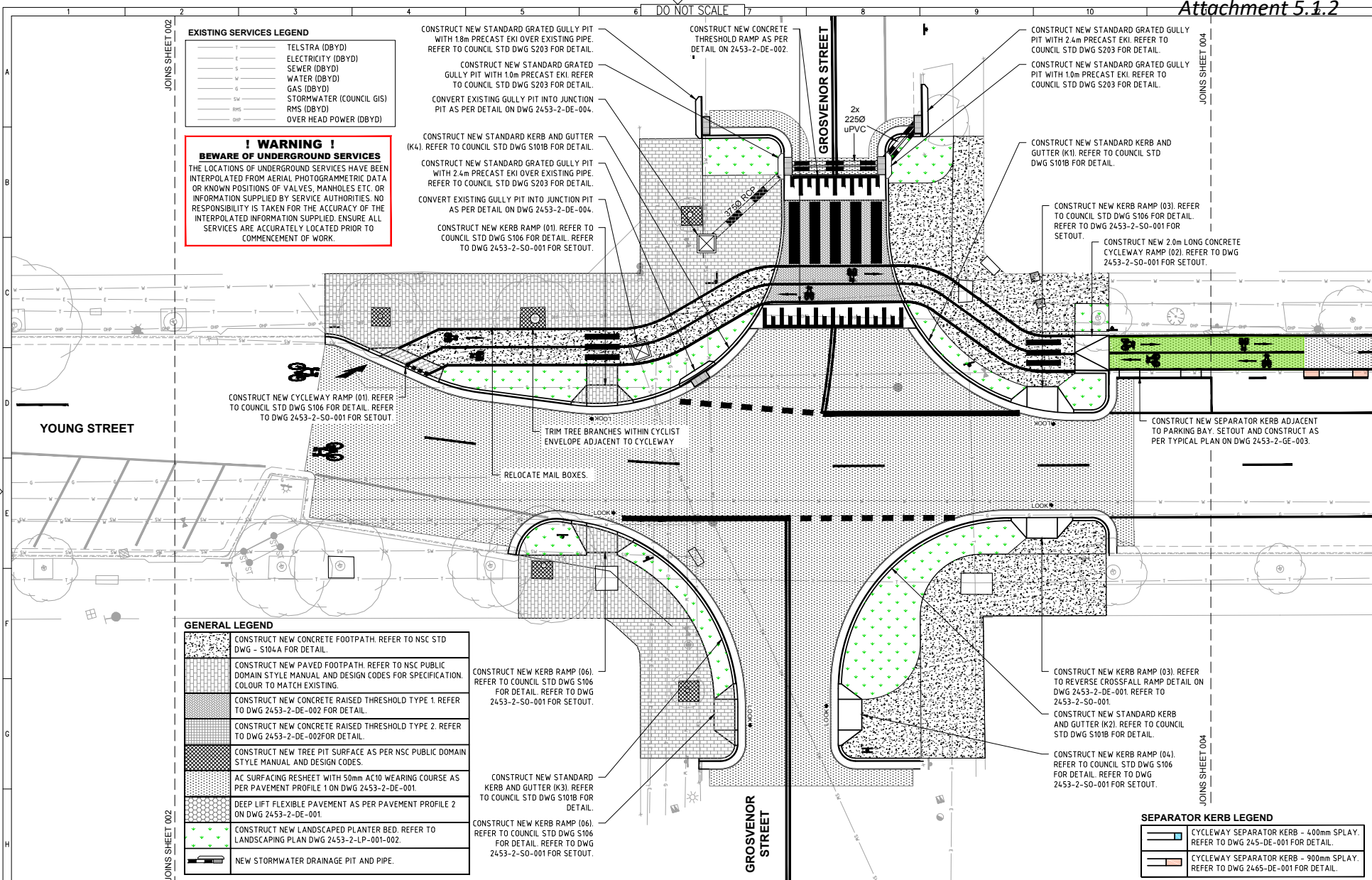
CONSTRUCT NEW KERB RAMP (O3). REFER TO REVERSE CROSSFALL RAMP DETAIL ON DWG 2453-2-DE-001 REFER TO 2453-2-SO-001.

CONSTRUCT NEW STANDARD KERB AND GUTTER (K2). REFER TO COUNCIL STD DWG S101B FOR DETAIL.

CONSTRUCT NEW KERB RAMP (O4). REFER TO COUNCIL STD DWG S106 FOR DETAIL. REFER TO DWG 2453-2-SO-001 FOR SETOUT.

SEPARATOR KERB LEGEND

[Pattern]	CYCLEWAY SEPARATOR KERB - 400mm SPLAY. REFER TO DWG 245-DE-001 FOR DETAIL.
[Pattern]	CYCLEWAY SEPARATOR KERB - 900mm SPLAY. REFER TO DWG 2465-DE-001 FOR DETAIL.



No.	Revision	Revised on	By	Checked	Approved	Date
C	ISSUED FOR TENDER		GH	NP		08/03/18
B	ISSUED FOR TENDER		GH	NP		29/11/17
A	PRELIMINARY ISSUE FOR COMMENT		GH	NP		13/10/17

0 1 2 3 4 5m
SCALE 1:100
A1 UNREDUCED

Copyright
This document is a draft and remains the property of North Sydney Council.
The document may only be used for the purposes for which it was prepared and is not to be used for any other purpose without the written consent of North Sydney Council. The Council is not responsible for any loss or damage caused by its use.

10 Regent Street
Chippendale NSW 2008

p 02 9282 9900
f 02 9282 9277

COMPLETE

ABN 64 100 037 812
www.completeurban.com.au

Client and Job
NORTH SYDNEY COUNCIL
ROUTE 2 CYCLEWAY & STREETScape IMPROVEMENT PLAN
STAGE 2 YOUNG STREET - MILITARY ROAD TO SUTHERLAND STREET

Scale 1:100 @ A1

Drawn: R.C./M.L. Design: R.C./M.L.
Checked: N.P. Design: I.G.
Approved:

Title
**GENERAL ARRANGEMENT PLAN
SHEET 3 OF 7**

Proj. No. 2453-2-GA-003

Rev. A1

DO NOT SCALE

SEPARATOR KERB LEGEND

	CYCLEWAY SEPARATOR KERB - 400mm SPLAY. REFER TO DWG 245-DE-001 FOR DETAIL.
	CYCLEWAY SEPARATOR KERB - 900mm SPLAY. REFER TO DWG 2465-DE-001 FOR DETAIL.

CONSTRUCT NEW SEPARATOR KERB. REFER TO 2453-2-DE-002 FOR DETAIL.

CONSTRUCT NEW SEPARATOR KERB ADJACENT TO PARKING BAY. SETOUT AND CONSTRUCT AS PER TYPICAL PLAN ON DWG 2453-2-GE-003.

INSTALL NEW BIKE SAFE GRATE OVER EXISTING PIT CHAMBER AS PER DETAIL ON DWG 2453-2-DE-004.

CONSTRUCT NEW SEPARATOR KERB. REFER TO 2453-2-DE-002 FOR DETAIL.

YOUNG STREET

GENERAL LEGEND

	CONSTRUCT NEW CONCRETE FOOTPATH. REFER TO NSC STD DWG - S104-A FOR DETAIL.
	CONSTRUCT NEW PAVED FOOTPATH. REFER TO NSC PUBLIC DOMAIN STYLE MANUAL AND DESIGN CODES FOR SPECIFICATION. COLOUR TO MATCH EXISTING.
	CONSTRUCT NEW CONCRETE RAISED THRESHOLD TYPE 1. REFER TO DWG 2453-2-DE-002 FOR DETAIL.
	CONSTRUCT NEW CONCRETE RAISED THRESHOLD TYPE 2. REFER TO DWG 2453-2-DE-002 FOR DETAIL.
	CONSTRUCT NEW TREE PIT SURFACE AS PER NSC PUBLIC DOMAIN STYLE MANUAL AND DESIGN CODES.
	AC SURFACING RESHEET WITH 50mm AC10 WEARING COURSE AS PER PAVEMENT PROFILE 1 ON DWG 2453-2-DE-001.
	DEEP LIFT FLEXIBLE PAVEMENT AS PER PAVEMENT PROFILE 2 ON DWG 2453-2-DE-001.
	CONSTRUCT NEW LANDSCAPED PLANTER BED. REFER TO LANDSCAPING PLAN DWG 2453-2-LP-001-002.
	NEW STORMWATER DRAINAGE PIT AND PIPE.

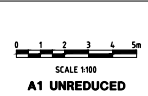
**! WARNING !
BEWARE OF UNDERGROUND SERVICES**

THE LOCATIONS OF UNDERGROUND SERVICES HAVE BEEN INTERPOLATED FROM AERIAL PHOTOGRAMMETRIC DATA OR KNOWN POSITIONS OF VALVES, MANHOLES ETC. OR INFORMATION SUPPLIED BY SERVICE AUTHORITIES. NO RESPONSIBILITY IS TAKEN FOR THE ACCURACY OF THE INTERPOLATED INFORMATION SUPPLIED. ENSURE ALL SERVICES ARE ACCURATELY LOCATED PRIOR TO COMMENCEMENT OF WORK.

EXISTING SERVICES LEGEND

T	TELSTRA (DBYD)
E	ELECTRICITY (DBYD)
S	SEWER (DBYD)
W	WATER (DBYD)
G	GAS (DBYD)
SW	STORMWATER (COUNCIL GIS)
RMS	RMS (DBYD)
OSP	OVER HEAD POWER (DBYD)

No.	Revision	Revised on	By	Checked	Approved	Date
C	ISSUED FOR TENDER		GH	NP		08/03/18
B	ISSUED FOR TENDER		GH	NP		29/11/17
A	PRELIMINARY ISSUE FOR COMMENT		GH	NP		13/10/17



Copyright
This document is a strict copyright of North Sydney Council.
The document may only be used for the purpose for which it was prepared and is to be returned to the Council upon completion of the project. It is not to be published.



10 Regent Street
Chippendale NSW 2008
p 02 9282 9900
f 02 9282 9277

COMPLETE

SCALE 1:100 @ A1
Drawn: R.C./M.L. Design: R.C./M.L.
Checked: N.P. Design: I.G.
Approved:

Client and Job	NORTH SYDNEY COUNCIL ROUTE 2 CYCLEWAY & STREETSCAPE IMPROVEMENT PLAN STAGE 2 YOUNG STREET - MILITARY ROAD TO SUTHERLAND STREET
Title	GENERAL ARRANGEMENT PLAN SHEET 4 OF 7
Org. No.	2453-2-GA-004
Size	A1
Rev	C

DO NOT SCALE

SEPARATOR KERB LEGEND

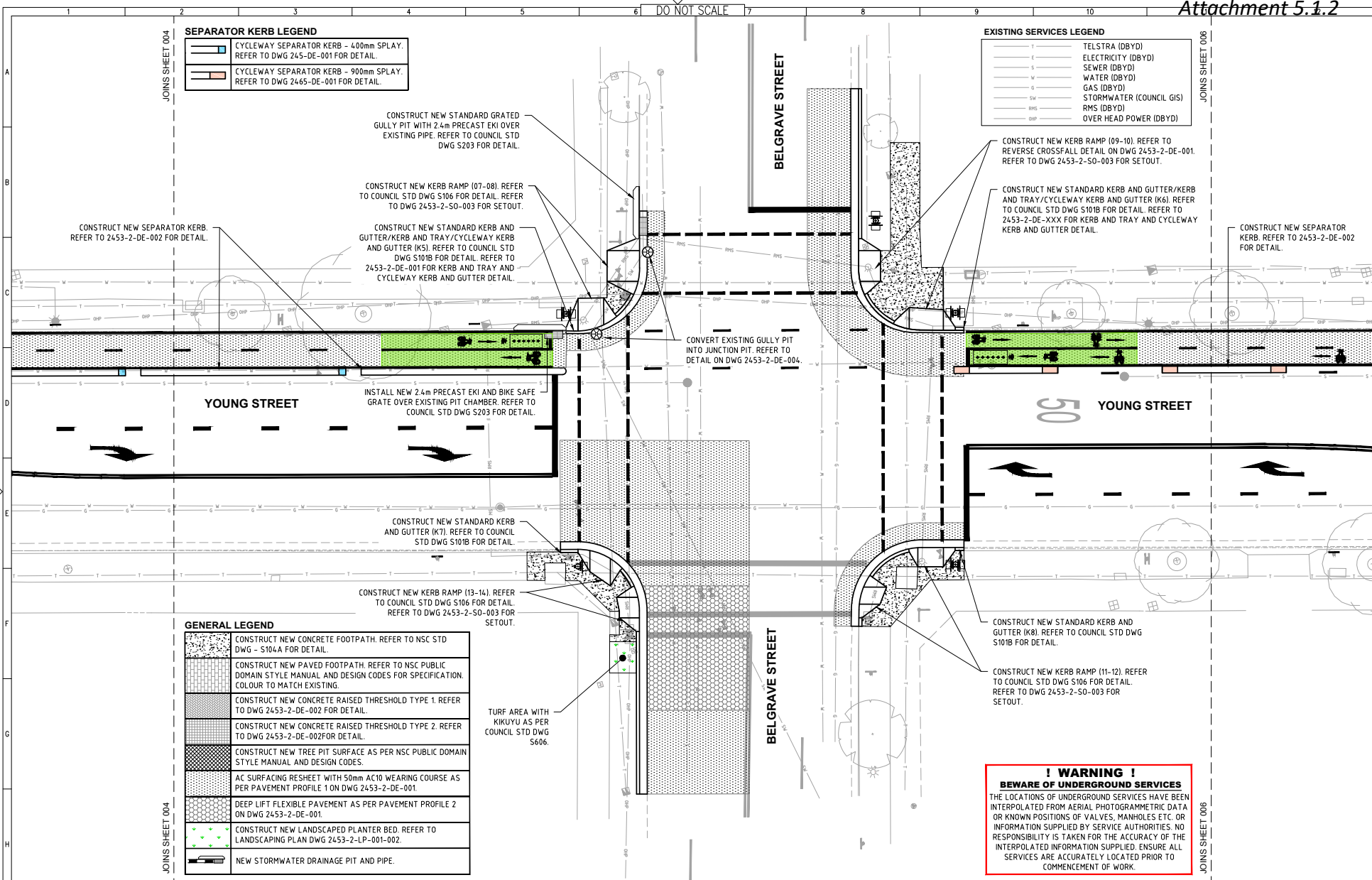
	CYCLEWAY SEPARATOR KERB - 400mm SPLAY. REFER TO DWG 245-DE-001 FOR DETAIL.
	CYCLEWAY SEPARATOR KERB - 900mm SPLAY. REFER TO DWG 2465-DE-001 FOR DETAIL.

EXISTING SERVICES LEGEND

TELSTRA (DBYD)
ELECTRICITY (DBYD)
SEWER (DBYD)
WATER (DBYD)
GAS (DBYD)
STORMWATER (COUNCIL GIS)
RMS (DBYD)
OVER HEAD POWER (DBYD)

GENERAL LEGEND

	CONSTRUCT NEW CONCRETE FOOTPATH. REFER TO NSC STD DWG - S104A FOR DETAIL.
	CONSTRUCT NEW PAVED FOOTPATH. REFER TO NSC PUBLIC DOMAIN STYLE MANUAL AND DESIGN CODES FOR SPECIFICATION. COLOUR TO MATCH EXISTING.
	CONSTRUCT NEW CONCRETE RAISED THRESHOLD TYPE 1. REFER TO DWG 2453-2-DE-002 FOR DETAIL.
	CONSTRUCT NEW CONCRETE RAISED THRESHOLD TYPE 2. REFER TO DWG 2453-2-DE-002 FOR DETAIL.
	CONSTRUCT NEW TREE PIT SURFACE AS PER NSC PUBLIC DOMAIN STYLE MANUAL AND DESIGN CODES.
	AC SURFACING RESHEET WITH 50mm AC10 WEARING COURSE AS PER PAVEMENT PROFILE 1 ON DWG 2453-2-DE-001.
	DEEP LIFT FLEXIBLE PAVEMENT AS PER PAVEMENT PROFILE 2 ON DWG 2453-2-DE-001.
	CONSTRUCT NEW LANDSCAPED PLANTER BED. REFER TO LANDSCAPING PLAN DWG 2453-2-LP-001-002.
	NEW STORMWATER DRAINAGE PIT AND PIPE.

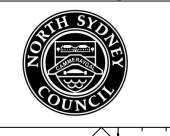


! WARNING !
BEWARE OF UNDERGROUND SERVICES
 THE LOCATIONS OF UNDERGROUND SERVICES HAVE BEEN INTERPOLATED FROM AERIAL PHOTOGRAMMETRIC DATA OR KNOWN POSITIONS OF VALVES, MANHOLES ETC. OR INFORMATION SUPPLIED BY SERVICE AUTHORITIES. NO RESPONSIBILITY IS TAKEN FOR THE ACCURACY OF THE INTERPOLATED INFORMATION SUPPLIED. ENSURE ALL SERVICES ARE ACCURATELY LOCATED PRIOR TO COMMENCEMENT OF WORK.

No.	Revision	Revised on	By	Checked	Approved	Date
C	ISSUED FOR TENDER		GH	NP		08/03/18
B	ISSUED FOR TENDER		GH	NP		29/11/17
A	PRELIMINARY ISSUE FOR COMMENT		GH	NP		13/10/17

0 1 2 3 4 5m
 SCALE 1:100
A1 UNREDUCED

Copyright
 This document is a strict copyright of North Sydney Council.
 The document may only be used for the purposes of the project and may not be reproduced or distributed in any form without the express written permission of North Sydney Council.



10 Regent Street
 Chippendale NSW 2008 | p 02 9282 9900 | f 02 9282 9277

COMPLETE

ABN 64 100 037 812
 www.completeurban.com.au

Client and Job	NORTH SYDNEY COUNCIL ROUTE 2 CYCLEWAY & STREETScape IMPROVEMENT PLAN STAGE 2 YOUNG STREET – MILITARY ROAD TO SUTHERLAND STREET		
Drawn	R.C./M.L.	Designed	R.C./M.L.
Check	N.P.	Design Check	I.G.
Approved			
Title	GENERAL ARRANGEMENT PLAN SHEET 5 OF 7		
Org. No.	2453-2-GA-005		
Scale	1:100 @ A1		
Sheet	A1		
Rev.	C		

DO NOT SCALE

EXISTING SERVICES LEGEND

T	TELSTRA (DBYD)
E	ELECTRICITY (DBYD)
S	SEWER (DBYD)
W	WATER (DBYD)
G	GAS (DBYD)
SH	STORMWATER (COUNCIL GIS)
RMS	RMS (DBYD)
OSP	OVER HEAD POWER (DBYD)

SEPARATOR KERB LEGEND

	CYCLEWAY SEPARATOR KERB - 400mm SPLAY. REFER TO DWG 245-DE-001 FOR DETAIL.
	CYCLEWAY SEPARATOR KERB - 900mm SPLAY. REFER TO DWG 2465-DE-001 FOR DETAIL.

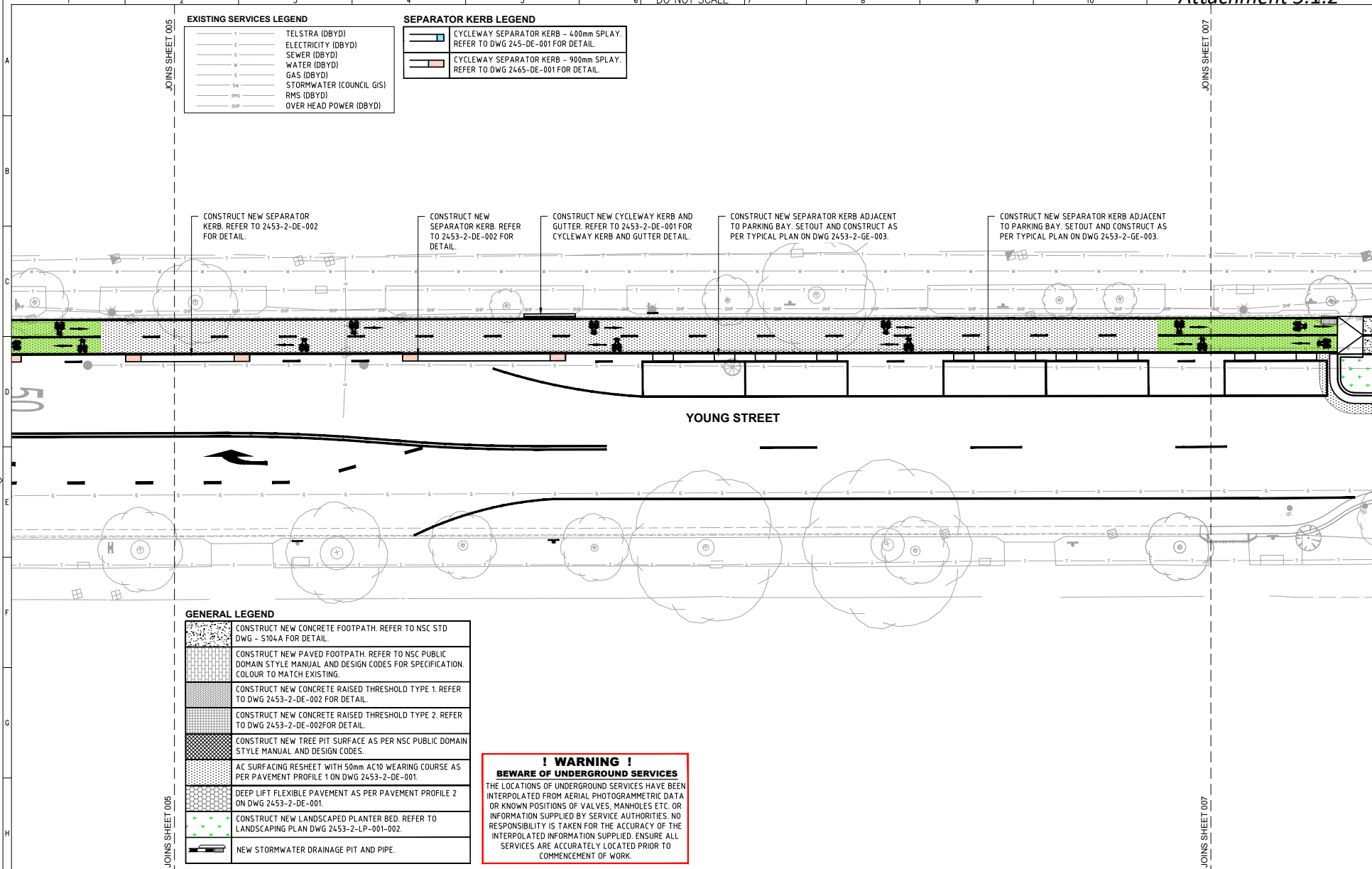
CONSTRUCT NEW SEPARATOR KERB. REFER TO 2453-2-DE-002 FOR DETAIL.

CONSTRUCT NEW SEPARATOR KERB. REFER TO 2453-2-DE-002 FOR DETAIL.

CONSTRUCT NEW CYCLEWAY KERB AND GUTTER. REFER TO 2453-2-DE-001 FOR CYCLEWAY KERB AND GUTTER DETAIL.

CONSTRUCT NEW SEPARATOR KERB ADJACENT TO PARKING BAY. SETOUT AND CONSTRUCT AS PER TYPICAL PLAN ON DWG 2453-2-GE-003.

CONSTRUCT NEW SEPARATOR KERB ADJACENT TO PARKING BAY. SETOUT AND CONSTRUCT AS PER TYPICAL PLAN ON DWG 2453-2-GE-003.

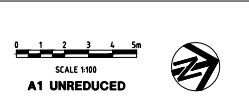


GENERAL LEGEND

	CONSTRUCT NEW CONCRETE FOOTPATH. REFER TO NSC STD DWG - S104A FOR DETAIL.
	CONSTRUCT NEW PAVED FOOTPATH. REFER TO NSC PUBLIC DOMAIN STYLE MANUAL AND DESIGN CODES FOR SPECIFICATION. COLOUR TO MATCH EXISTING.
	CONSTRUCT NEW CONCRETE RAISED THRESHOLD TYPE 1. REFER TO DWG 2453-2-DE-002 FOR DETAIL.
	CONSTRUCT NEW CONCRETE RAISED THRESHOLD TYPE 2. REFER TO DWG 2453-2-DE-002 FOR DETAIL.
	CONSTRUCT NEW TREE PIT SURFACE AS PER NSC PUBLIC DOMAIN STYLE MANUAL AND DESIGN CODES.
	AC SURFACING RESHEET WITH 50mm AC10 WEARING COURSE AS PER PAVEMENT PROFILE 1 ON DWG 2453-2-DE-001.
	DEEP LIFT FLEXIBLE PAVEMENT AS PER PAVEMENT PROFILE 2 ON DWG 2453-2-DE-001.
	CONSTRUCT NEW LANDSCAPED PLANTER BED. REFER TO LANDSCAPING PLAN DWG 2453-2-LP-001-002.
	NEW STORMWATER DRAINAGE PIT AND PIPE.

! WARNING !
BWARE OF UNDERGROUND SERVICES
 THE LOCATIONS OF UNDERGROUND SERVICES HAVE BEEN INTERPOLATED FROM AERIAL PHOTOGRAMMETRIC DATA OR KNOWN POSITIONS OF VALVES, MANHOLES ETC. OR INFORMATION SUPPLIED BY SERVICE AUTHORITIES. NO RESPONSIBILITY IS TAKEN FOR THE ACCURACY OF THE INTERPOLATED INFORMATION SUPPLIED. ENSURE ALL SERVICES ARE ACCURATELY LOCATED PRIOR TO COMMENCEMENT OF WORK.

No.	Revision	Revised on DWG	By	Checked	Approved	Date
C	ISSUED FOR TENDER		GH	NP		08/03/18
B	ISSUED FOR TENDER		GH	NP		29/11/17
A	PRELIMINARY ISSUE FOR COMMENT		GH	NP		13/10/17



10 Regent Street
 Chippendale NSW 2008

p 02 9282 9900
 f 02 9282 9277

COMPLETE

ABN 64 100 037 812
 www.completeurban.com.au

SCALE 1:100 @ A1

Drawn	R.C./M.L.	Designed	R.C./M.L.
Check	N.P.	Design	I.G.
Approved		Check	

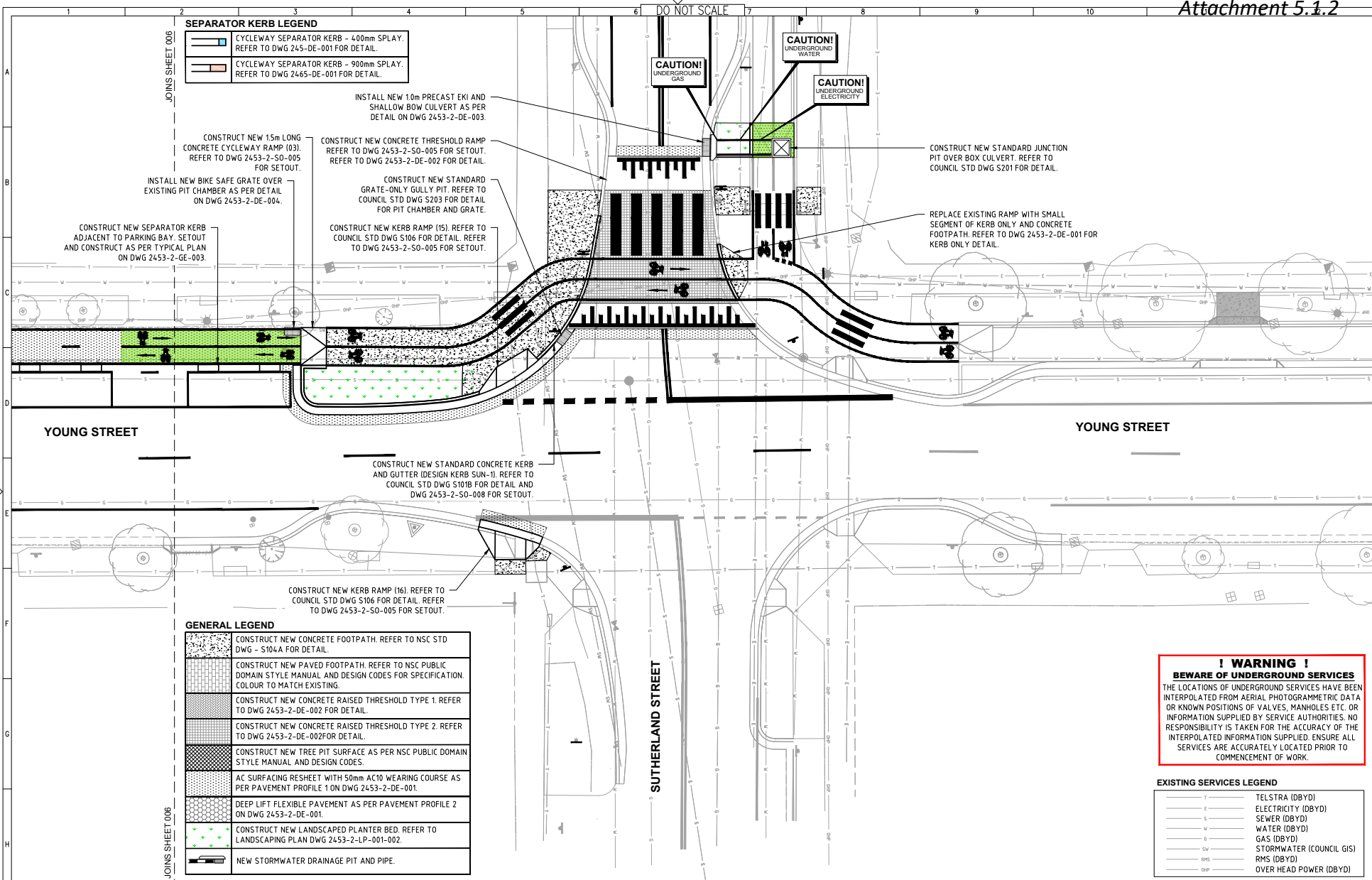
This Drawing must not be used for Construction unless signed off Approved.

Client and Job
 NORTH SYDNEY COUNCIL
 ROUTE 2 CYCLEWAY & STREETScape IMPROVEMENT PLAN
 STAGE 2 YOUNG STREET - MILITARY ROAD TO SUTHERLAND STREET

Title
 GENERAL ARRANGEMENT PLAN
 SHEET 6 OF 7

Proj. No.
 2453-2-GA-006

Rev
 A1



SEPARATOR KERB LEGEND

	CYCLEWAY SEPARATOR KERB - 400mm SPLAY. REFER TO DWG 245-DE-001 FOR DETAIL.
	CYCLEWAY SEPARATOR KERB - 900mm SPLAY. REFER TO DWG 245-DE-001 FOR DETAIL.

GENERAL LEGEND

	CONSTRUCT NEW CONCRETE FOOTPATH. REFER TO NSC STD DWG - S104A FOR DETAIL.
	CONSTRUCT NEW PAVED FOOTPATH. REFER TO NSC PUBLIC DOMAIN STYLE MANUAL AND DESIGN CODES FOR SPECIFICATION. COLOUR TO MATCH EXISTING.
	CONSTRUCT NEW CONCRETE RAISED THRESHOLD TYPE 1. REFER TO DWG 2453-2-DE-002 FOR DETAIL.
	CONSTRUCT NEW CONCRETE RAISED THRESHOLD TYPE 2. REFER TO DWG 2453-2-DE-002 FOR DETAIL.
	CONSTRUCT NEW TREE PIT SURFACE AS PER NSC PUBLIC DOMAIN STYLE MANUAL AND DESIGN CODES.
	AC SURFACING RESHEET WITH 50mm AC10 WEARING COURSE AS PER PAVEMENT PROFILE 1 ON DWG 2453-2-DE-001.
	DEEP LIFT FLEXIBLE PAVEMENT AS PER PAVEMENT PROFILE 2 ON DWG 2453-2-DE-001.
	CONSTRUCT NEW LANDSCAPED PLANTER BED. REFER TO LANDSCAPING PLAN DWG 2453-2-LP-001-002.
	NEW STORMWATER DRAINAGE PIT AND PIPE.

! WARNING !
BEWARE OF UNDERGROUND SERVICES
 THE LOCATIONS OF UNDERGROUND SERVICES HAVE BEEN INTERPOLATED FROM AERIAL PHOTOGRAMMETRIC DATA OR KNOWN POSITIONS OF VALVES, MANHOLES ETC. OR INFORMATION SUPPLIED BY SERVICE AUTHORITIES. NO RESPONSIBILITY IS TAKEN FOR THE ACCURACY OF THE INTERPOLATED INFORMATION SUPPLIED. ENSURE ALL SERVICES ARE ACCURATELY LOCATED PRIOR TO COMMENCEMENT OF WORK.

EXISTING SERVICES LEGEND

	TELSTRA (DBYD)
	ELECTRICITY (DBYD)
	SEWER (DBYD)
	WATER (DBYD)
	GAS (DBYD)
	STORMWATER (COUNCIL GIS)
	RMS (DBYD)
	OVER HEAD POWER (DBYD)

Revision - Review on CAD to not exceed 1 hour		Checked	Approved	Date
B	ISSUED FOR TENDER	GH	NP	06/05/18
A	ISSUED FOR TENDER	GH	NP	29/11/17

TRAFFIC COMMITTEE MEETING - 21 APRIL 2023 AGENDA

Copyright
 This document is a draft and the property of Cambridge Urban Pty Ltd.
 The document may only be used for the purposes stated and no other use is permitted without the written consent of Cambridge Urban Pty Ltd.

Scale: 0 1 2 3 4 5m
 SCALE 1:100
A1 UNREDUCED



10 Regent Street
 Chippendale NSW 2008

p 02 9282 9900
 f 02 9282 9277

COMPLETE

ABN 64 100 037 812
 www.completeurban.com.au

Client and Job
 NORTH SYDNEY COUNCIL
 ROUTE 2 CYCLEWAY & STREETScape IMPROVEMENT PLAN
 STAGE 2 YOUNG STREET - MILITARY ROAD TO SUTHERLAND STREET

Scale: 1:100 @ A1

Drawn: R.C./M.L. Design: R.C./M.L.
 Drafting: N.P. Design: I.G.
 Check: Approved

This Drawing must not be used for Construction unless signed as Approved.

Doc No: 2453-2-GA-007

Sheet: A1 of 8