



AGENDA

A **Meeting** of the **Traffic Committee** will be held on Cammeraygal Land at the Council Chambers, 200 Miller Street, North Sydney at 10:00 AM on Friday 13 October 2023.
The agenda is as follows.

Therese Manns
GENERAL MANAGER



North Sydney Council is an Open Government Council. The records of Council are available for public viewing in accordance with this policy, with the only exception being made for certain confidential documents such as legal advice, matters required by legislation not to be divulged, and staff matters.

1. Confirmation of Minutes	3
2. Disclosures of Interest	3
3. Matters Arising from the Minutes	3
4. Matters Arising from Council Resolutions.....	3
5. Items for Consideration.....	4
<i>5.1. Permanent Burton Street Road Closure</i>	<i>4</i>
<i>5.2. Murdoch Street, Cremorne – Children’s Crossing</i>	<i>12</i>
<i>5.3. Traffic Delegations.....</i>	<i>18</i>
6. Informal Items for Consideration.....	24
7. Local Development Advisory Committee Items for Consideration	24
8. General Business	25
9. Closure	25

1. Confirmation of Minutes

The Minutes of the previous meeting held on 21 July 2023, copies of which had been previously circulated, were taken as read and confirmed.

2. Disclosures of Interest

Nil.

3. Matters Arising from the Minutes

Nil.

4. Matters Arising from Council Resolutions

Nil.

5. Items for Consideration

5.1. Permanent Burton Street Road Closure

AUTHOR: Diana Mejia, Project Manager

ENDORSED BY: Gary Parsons, Director Open Space and Infrastructure

ATTACHMENTS:

1. Burton Street - Full Time Closure - Final TMP Signed [5.1.1 - 4 pages]

PURPOSE:

This report seeks endorsement for the permanent closure of Burton Street between Broughton Street and Humphrey Place in Kirribilli. This closure is proposed to facilitate the construction of a permanent public plaza.

EXECUTIVE SUMMARY:

- In February 2021, Council adopted the Kirribilli Village Centre Masterplan. The masterplan identified the construction of a public plaza on Burton Street between Broughton Street and Humphrey Place. Council trialled the implementation of the plaza on Burton Street for six months.
- On 26 April 2022, the outcome of the trial and associated community consultation were reported to Council, resulting in the endorsement of the permanent transformation of Burton Street into a public plaza.
- Approval for the trial closure was obtained under the TfNSW Special Covid-19 traffic regulation delegation to Councils - Section 115 of the Roads Act 1993 for temporary pedestrian and bicycle works.
- On 13 February 2023, following additional community consultation, Council resolved to adopt concept design (Option 1C) and proceed with detailed design and construction of Burton Street Plaza.
- In compliance with NSW ROADS ACT 1993 - SECT 116, a public notice to declare the permanent road closure of Burton Street was published on the Mosman Daily Thursday 27 July 2023. The feedback period ended at 5pm on Thursday 24 August 2023, and no submissions were received.

FINANCIAL IMPLICATIONS:

The project is currently funded in the Kirribilli and McMahons Point Village Centres Upgrade.

RECOMMENDATION:

1. THAT Traffic Committee endorse the permanent closure of Burton Street, between Humphrey Place and Broughton Street in Kirribilli, for the construction of public pedestrian plaza.

LINK TO COMMUNITY STRATEGIC PLAN

The relationship with the Community Strategic Plan is as follows:

1. Our Living Environment
 - 1.2 Environmentally sustainable community
 - 1.3 Clean and green places
 - 1.4 Well utilised open space and recreational facilities
2. Our Built Infrastructure
 - 2.1 Infrastructure and assets meet diverse community needs
 - 2.2 Vibrant public domains and villages
3. Our Innovative City
 - 3.1 Our commercial centres are prosperous and vibrant
4. Our Social Vitality
 - 4.1 North Sydney is connected, inclusive, healthy and safe

BACKGROUND

In February 2021, Council adopted the Kirribilli Village Centre Masterplan which identified a series of streetscape upgrades opportunities within the town centre, including the pedestrianisation of Burton Street, between Humphrey Place and Broughton Street.

As part of this masterplan, Council implemented a six-month trial of a pedestrian plaza on Burton Street, between Humphrey Place and Broughton Street. The outcome of the trial projects and community consultation were reported to Council on 26 April 2022, when it resolved to endorse the implementation of a permanent plaza on Burton Street.

Between 4 October 2022 and 14 November 2022, Council consulted on two design options for the proposed plaza. These designs were based on the Kirribilli Village Public Domain upgrades Masterplan and incorporated feedback from previous community consultations.

On 12 December 2022, Council resolved to adopt the consulted concept design option known as 'Option 1B' but with provisions for additional amendments based on community feedback. This adjusted design, named 'Option 1C,' was subsequently submitted for Council adoption.

On 13 February 2023, Council resolved to adopt concept design 'Option 1C' and proceed with the detailed design and construction of Burton Street Plaza.

CONSULTATION REQUIREMENTS

Community engagement has occurred in accordance with Council's *Community Engagement Protocol and with required advertisement under Section 116 of the Roads Act 1993*.

Consultation on two concept design options for the proposed plaza was undertaken between 4 October to 14 November 2022. During this time 3,434 letters were sent out to the local community to promote the public exhibition. Additional promotion included Council's e-newsletters, on-site posters with QR codes, social media ads, one in-person workshop, one online information session and a project specific 'Have Your Say' webpage.

In total, Council received 191 submissions, including 10 written, 13 workshop, and 168 online submissions. The submissions preferences from the Burton Street Plaza options were 62.50% for design Option 1, 10.42% for design option 2 and 27.08% for neither of the options.

Additionally, and in compliance with NSW ROADS ACT 1993 - SECT 116, a public notice to declare the permanent road closure of Burton Street, between Broughton Street and Humphrey Place, was published on the Mosman Daily Thursday 27 July 2023. The feedback period ended at 5pm on Thursday 24 August 2023, and no submissions were received.

Relates to ECM No: 9196688, 9341430, 9103762.

Standard or Guideline Used: NSW ROADS ACT 1993 - SECT 116

Signs & Lines Priority: N/A

Precinct and Ward: Bradfield and Cammeraygal

Impact on Bicycles: Provision for bicycle racks.

Impact on Pedestrians: Pedestrianised plaza will improve pedestrian safety, amenity, and connectivity.

Impact on Parking: N/A

DETAIL

To improve pedestrian safety, amenity, and connectivity in the Kirribilli Village Centre, it is proposed to convert Burton Street, between Humphrey Place and Broughton Street, into a pedestrianised public plaza. The upgrade will include removal of kerb, installation of new paving and street furniture, planting, drainage, bollards and lighting to convert the street into a Public Pedestrian Plaza.

Based on the results of the community consultation a revised design concept was developed 'Option 1C' which included improvements to pedestrian access through the centreline of the plaza and village specific street furniture selection. On 13 February 2023, Council resolved to adopt detailed concept design 'Option 1C' and to proceed with detailed design and construction of Burton Street Plaza.

1.1 Burton Street | Option 1 / Existing levels & no kerbs

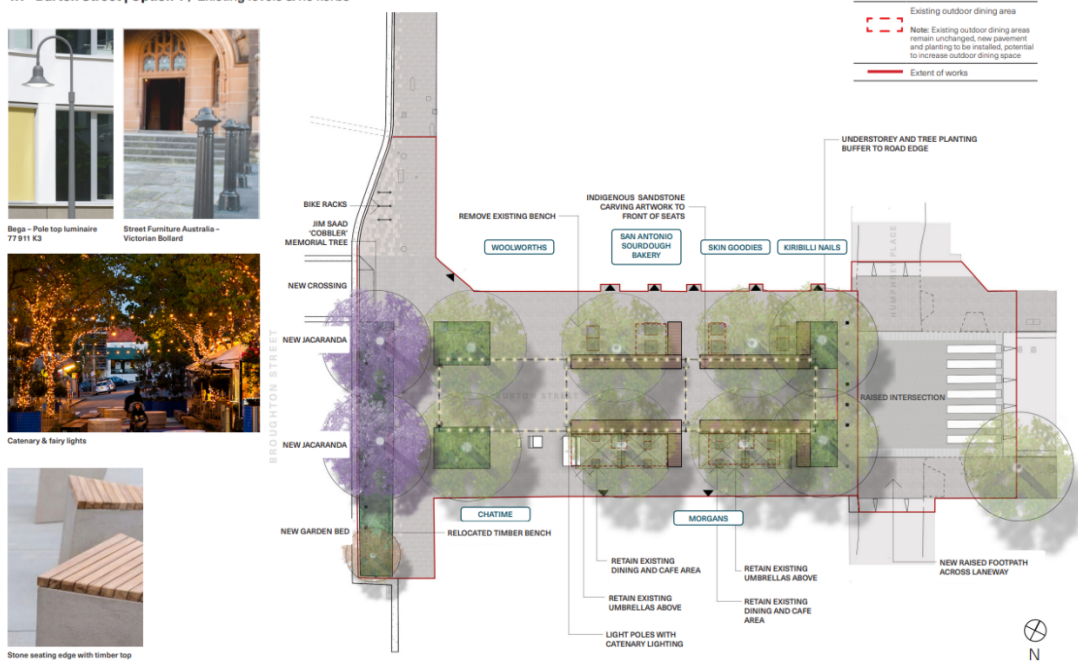


Image 1- Bligh Street Shared Zone Adopted Concept Plan Option 1C

On 21 October 2022 a Traffic Delegated Authority (TDA 22/100) request for Permanent Closure of Burton Street, Street as Shared Spaces was made. In response TfNSW prepared a memo including the “Permanent Traffic Management Plan” for review and approval of TfNSW Senior Management. After their review on 3 July 2023, TfNSW approved the proposal and recommended:

“The submission from North Sydney Council regarding the proposal to implement the permanent closure of Burton Street between Broughton Street and Humphrey Place has satisfactorily addressed the necessary requirements of the TMP and is recommended for approval.”

Given the community support, **approval from TfNSW** and adoption of the project by Council, it is recommended that North Sydney Council Traffic Committee endorse the proposal of the permanent closure of Burton Street between Humphrey Place and Broughton Street in Kirribilli, for the implementation of a Public Pedestrian Plaza.



Permanent Traffic Management Plan

Site Details

Address: Burton Street, Kirribilli	LGA: North Sydney
Ref / Version: V.1	Date of TMP Submission: 21/10/2022
Council Contact Name: Brinthaban Baskaran	Council Contact Number: 02 9936 8266

Introduction

North Sydney Council has submitted a Traffic Management Plan (TMP) in accordance with the Transport for NSW *Procedures for use in the preparation of a Traffic Management Plan (2001)* for the proposal to convert Burton Street between Broughton Street and Humphrey Place to a permanent closure following the 6 month trial closure approved in July 2021 under the DPIE Streets as Shared Spaces Program to improve pedestrian safety.

Details

In April 2021, as part of the Kirribilli Activation project, North Sydney Council temporarily closed Burton Street to private vehicles between Broughton Street and Humphrey Place whilst still maintaining pedestrian and cyclist access. At that time, and as part of the temporary closure, PeopleTrans prepared a traffic management plan to safely accommodate the changes to the road network as far as traffic accessibility was concerned.

Prior to the temporary closure, Burton Street operated as a one-way eastbound road between Broughton Street and Humphrey Place including a westbound contraflow cycle lane. North Sydney Council are now considering making this temporary closure permanent

North Sydney Council are now proposing to make this temporary closure permanent and commissioned PeopleTrans in July 2022 to further assess in the traffic and transport impacts of a long-term permanent closure of Burton Street. The key objective of the Traffic and Transport Impact Assessment (TIA) is to identify any adverse access or safety implications resulting from a permanent closure of Burton Street.

The key roads surrounding Burton Street include Broughton Street, which is a two-lane two-way road, running north to south, Crescent Place, Humphrey Place and Bligh Street, which are all one way local roads and Burton Street which is a two-way local road.

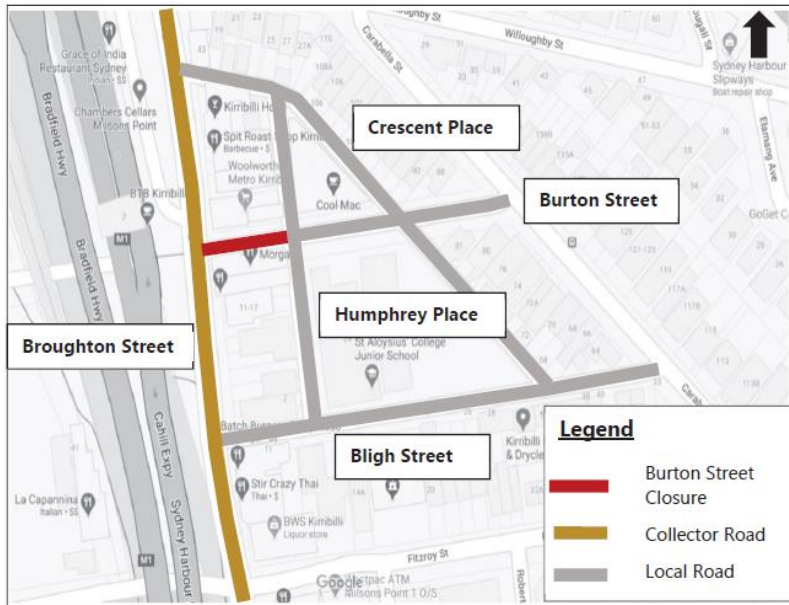
Key land uses in proximity of Burton Street, which are key trip attractors, include Milsons Point Train Station, Kirribilli Hotel, St Aloysius Junior School, Woolworths Metro and the various cafes and restaurants on Burton Street itself. Of note during the weekday AM and PM school peak periods is the heavy flow of pedestrians along the northern footpath of Burton Street between the Milsons Point train station and St Aloysius school.

The closure of Burton Street at this intersection has resulted in a cross intersection becoming a T-Intersection. However, this has also created new diagonal pedestrian desire lines from the southern and northern footpaths of Burton Street south to the opening in the Burton Street closure. This is not considered an issue as traffic volumes in this location are very low, particularly during the weekends and this type of pedestrian movement is not as prominent during the early weekday mornings when traffic volumes are higher associated with St Aloysius school pick up and drop off.

The closure of Burton Street would not have any adverse impacts to bus services. Given that no bus routes go through Burton Street, the impacts on these routes due to the closure of Burton Street would be limited to any potential queues at the Broughton Street / Crescent Place intersection.

Traffic Impact Assessment

North Sydney Council commissioned PeopleTrans in July 2022 to undertake Speed and traffic volume and pedestrian counts on the surrounding local road network and undertook a comparison study with the pre-closure traffic studies. The extent of the study area is in the suburb of Kirribilli, in the North Sydney Council Local Government Area. Key roads assessed as part of the TIA include Broughton Street, Burton Street, Crescent Place and Humphrey Place.

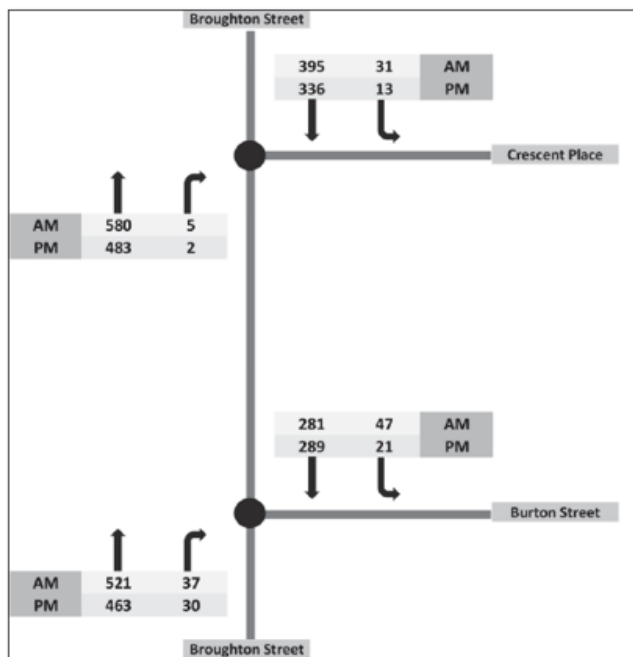


Intersection Operation (Pre Closure)

In April 2021 during the planning of the temporary closure of Burton Street PeopleTrans collected weekday peak hour traffic data (7:30am-8:30am & 2:45pm-3:45pm) at the intersections of Broughton Street/Burton Street and Broughton Street/Crescent Place as indicated below in Figure 2-9:

Survey indicates mid-block AM and PM peak hour weekday traffic volumes of 35v/hr and 15v/hr respectively on Crescent Place and 84v/hr and 51v/hr on Burton Street. It should be noted that the traffic volumes recorded on Crescent Place and Burton Street were well within the NSW environmental capacity standards for local roads.

PRE-CLOSURE (April 2021): Weekday AM/PM Peak Hour Traffic Volumes



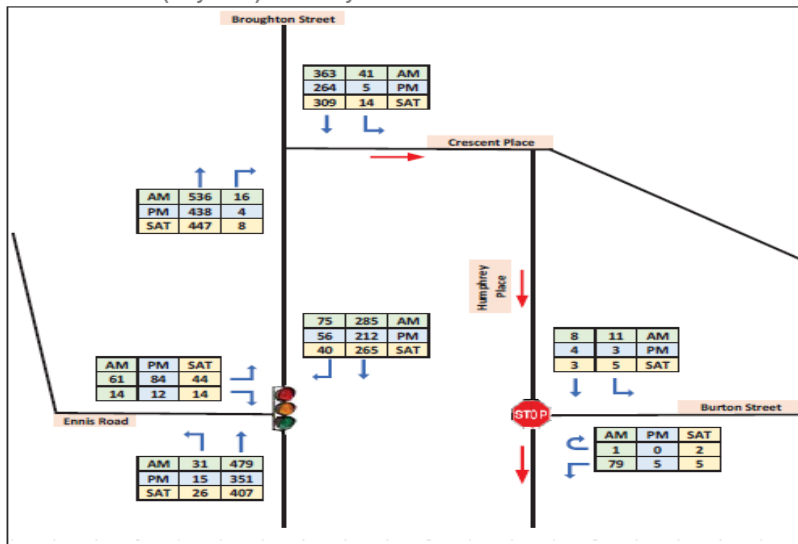
Intersection Operation (Post Closure)

PeopleTrans analysed the weekday operation of the Broughton Street/Crescent Place intersection post-closure given that it was anticipated that this intersection would have to manage the majority of redirved traffic from the Burton Street closure. The operation of this intersection was assessed using Sidra Intersection, which calculates intersection performance.

Modelling indicated that all the intersections within the study area currently operate well during the weekday AM, PM and Saturday peak hours with minimal queues and delays on all approaches.

Minor increases in traffic volumes at the intersection of Broughton Street/Crescent Place were noted in July 2022 when surveys were compared to the traffic volumes recorded in April 2021 as part of the temporary closure of Burton Street. These increases were not as high as was anticipated or modelled in 2021 and resulted in negligible network impact.

POST CLOSURE (July 2022): Weekday AM/PM Peak Hour Traffic Volumes



Conclusion

Based on the analysis contained within the Traffic Impact Assessment the following summary is provided on the impacts of this closure:

- The proposed full time closure of Burton Street will result in a Level of Service (LoS) "A" at the key intersections affected by the closure. Please refer to table 3.5 shown above.
- The additional traffic diverted by the proposed temporary road closure of Burton Street is not compromising the safety or function of the surrounding road network. This would be the same for a permanent closure of Burton Street.
- The current road network traffic volumes and speeds are within the limits of the NSW environmental capacity standards for local roads, with the exception of Broughton Street.
- The current intersections near Burton Street are operating satisfactorily with minimal queues and delays on all approaches.
- Cycle movements on Burton Street itself were negligible with a total of 17 cyclists observed during the surveys undertaken in March 2021 between 7:00 am and 4:00pm. Cycle movements recorded in August 2022 indicated similar volumes.
- No public or school buses travel directly on Burton Street and as such a permanent closure will have no adverse impacts on bus operations.
- Based on the analysis above, the transport impacts of a permanent closure of Burton Street would be negligible but there could still be opportunities to improve pedestrian and cyclist safety and amenity during the design of the permanent closure. These relate specifically to the interfaces with the trafficable roads at either end of Burton Street.

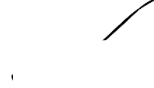
The additional traffic diverted by the proposed temporary road closure of Burton Street is not compromising the safety or function of the surrounding road network. This would be the same for a permanent closure of Burton Street.

The current road network traffic volumes and speeds are within the limits of the NSW environmental capacity standards for local roads, with the exception of Broughton Street. The current intersections near Burton Street are operating satisfactorily with minimal queues and delays on all approaches.

Recommendation

The submission from North Sydney Council regarding the proposal to implement the permanent closure of Burton Street between Broughton Street and Humphrey Place has satisfactorily addressed the necessary requirements of the TMP and is **recommended for approval**.

RECOMMENDED



David Osborne
Network and Safety Officer
Greater Sydney

CONCURRENCE



Peter Carruthers
Manager Network & Safety Services
Greater Sydney

APPROVAL



Natalie Gulliver
A/Director Network Management Eastern
Greater Sydney

5.2. Murdoch Street, Cremorne – Children’s Crossing

AUTHOR: Report of Traffic & Transport Engineer, Brinthaban Baskaran

ENDORSED BY: Gary Parsons, Director Open Space and Infrastructure

ATTACHMENTS:

1. Childrens Crossing - Murdoch Street Cremorne [5.2.1 - 1 page]

PURPOSE:

Council has received a request from Redland Junior School, Cremorne to convert the existing raised pedestrian crossing on Murdoch Street to a Children’s Crossing. As part of the installation of a Children’s Crossing, stop lines and No Stopping restrictions are required to be provided to align with the relevant Technical Directions.

The proposed crossing works will increase the pedestrian safety, visibility between approaching drivers and crossing pedestrians and helps to reduce vehicle speeds.

EXECUTIVE SUMMARY:

- Council has received a request from Redland Junior School, Cremorne to convert the existing raised pedestrian crossing on Murdoch Street to a Children’s Crossing. The change requires additional No Stopping restrictions and results in the loss of one parking space.
- In July and August 2023, community consultation was undertaken with 256 letters circulated to the community. There were six responses with four letters of support and two opposed.
- Given that the proposal will increase pedestrian safety, visibility between approaching drivers and crossing pedestrians and helps to reduce vehicle speeds, it is recommended that the proposal be endorsed.

FINANCIAL IMPLICATIONS:

The cost for this project will be funded from the Traffic and Transport Operation teams 2023/2024 signage budget.

RECOMMENDATION:

1. **THAT** the committee endorse the following proposals in Murdoch Street, Cremorne:
 - (a) The provision of a Children’s Crossing with associated ‘Stop’ lines across Murdoch Street, 12 metres north of Hampden Avenue; and
 - (b) The reallocation of kerb side restrictions on Murdoch Street as follows:

- i. On the eastern side, between 9.5m and 15m south of the existing pedestrian crossing as “No Stopping”;
- ii. On the eastern side, between 12m and 18m north of the existing pedestrian crossing as “Bus Zone 8am-9am; 2:30pm- 4pm School Days” ;
- iii. On the eastern side, between 42.4m and 48.4m north of the existing pedestrian crossing on Murdoch Street as “No Parking 8am-9am; 3pm-4pm School Days”;
- iv. On the eastern side, between 62.8m and 68.8m north of the existing pedestrian crossing on Murdoch Street as “2P 8:30am-6pm Mon-Fri Permit Holders Excepted Area 29”; and
- v. On the western side, between 8m and 15m north of the existing pedestrian crossing on Murdoch Street as “No Stopping”.

CONSULTATION REQUIREMENTS

Community engagement has occurred in accordance with Council's *Community Engagement Protocol*. The detail of this report provides the outcomes from the engagement for Council to consider prior to adoption.

Standard or Guideline Used: TDT 2002/12c

Signs & Lines Priority: N/A

Precinct and Ward: Harrison / Cammeraygal

Impact on Bicycles: N/A

Impact on Pedestrians: Nil

Impact on Parking: Net loss of 1 parking spaces

DETAIL

Council has received a request from Redland Junior School, Cremorne to convert the existing raised pedestrian crossing on Murdoch Street to a Children's Crossing. As part of the installation of a Children's Crossing, stop lines and No Stopping restrictions are required to be provided to align with the relevant Technical Directions.

WHAT IS A CHILDRENS CROSSING – Children's crossings operate during school zone hours. When a children's crossing is operating, it's marked by red-orange flags at both sides. When you see the flags, you must slow down and stop before the 'Stop' line to give way to pedestrians. You must remain at a complete stop until all pedestrians have left the crossing.

If the flags are not displayed, it's not operating as a children's crossing. This Children's Crossing is combined with a pedestrian crossing and when the flags are removed, pedestrian crossing rules apply.

According to Technical Direction TDT 2002/12c, 'No Stopping' restriction is required to be 15m on the departure side of the proposed crossing and 12m on the approach side. As part of investigation to the impact on visibility, Council considered the implementation of 12m "No Stopping" restrictions on approach and departure sides. Advice received from Transport for New South Wales was to maintain 15m No Stopping restrictions on the departure side of the crossing.

The required "No Stopping" restrictions result in the net loss of one unrestricted parking space. A sketch of the proposed changes is provided attached. Minor parking relocation has been provided to ensure no loss to the length of Bus Zone, School Drop-off or timed permit parking.

The proposed crossing works will increase pedestrian safety, visibility between approaching drivers and crossing pedestrians and helps to reduce vehicle speeds.

PUBLIC CONSULTATION

Community consultation on this proposal took place between 21 July 2023 and 01 September 2023. Approximately 256 letters were sent to 13 properties in the surrounding area and the survey was available online through Council's 'Have Your Say' webpage.

The results indicate a community preference for the children's crossing (66.7% support and 33.3% objection). The results of the survey are shown in tabular format below:

Option 1	Response				
	No		Yes		Total
	Qty	%	Qty	%	
Within Survey area:					
<ul style="list-style-type: none"> • Murdoch Street • Hampden Avenue 	2	33.3	4	66.7	6
Grand Total	2	33.3	4	66.7	6

COMMENTS RECEIVED

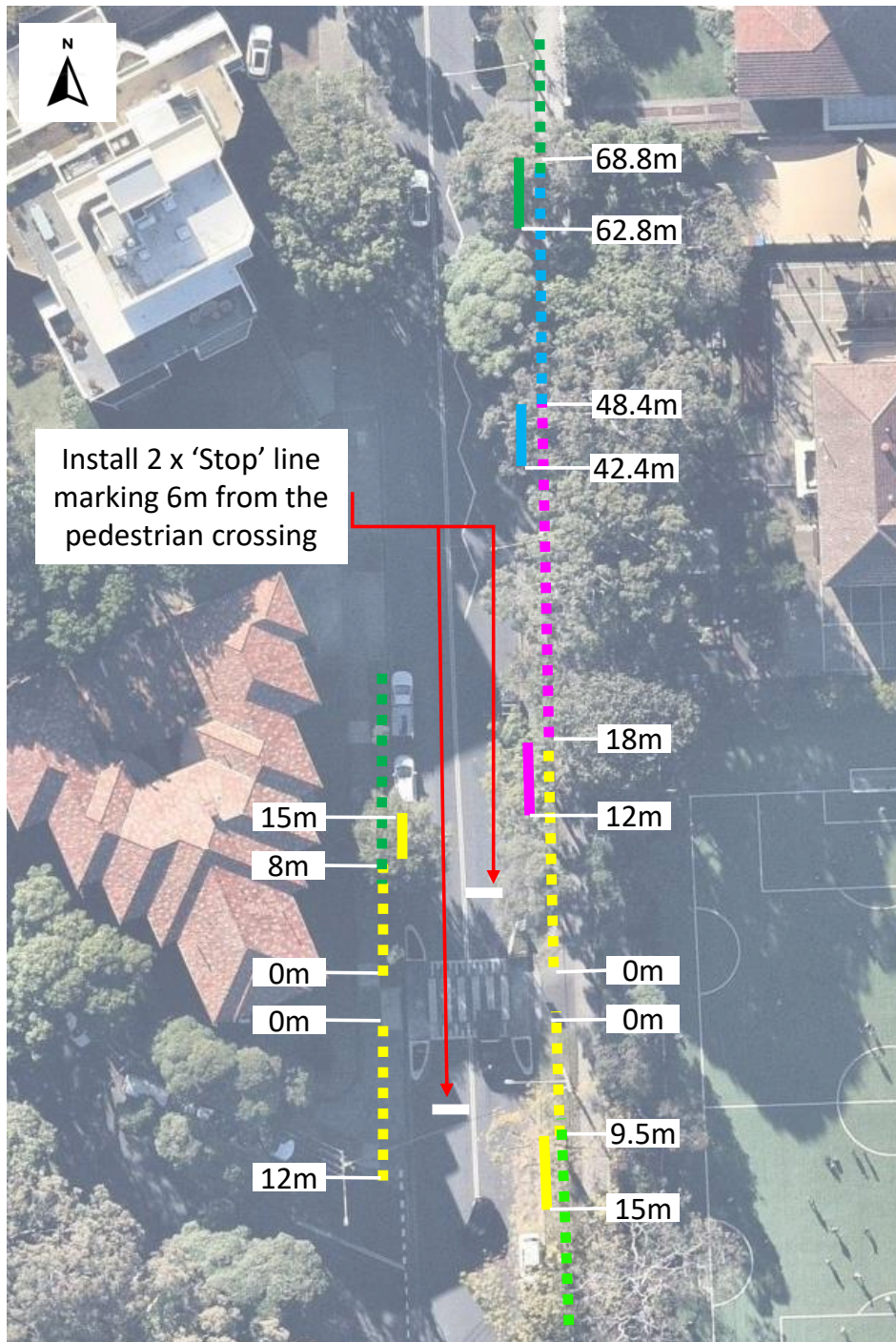
Respondents were asked to provide general comments/feedback. Council consolidates the comments into major themes as opposed to including every individual comments.

Theme	Community Comments	Office Comments
Parking	Does not support the proposal as parking is premium and cannot remove parking.	While it is important to address parking in Murdoch Street, safety for pedestrians takes priority. The proposal increases pedestrian safety and helps to reduce vehicle speeds.
Pedestrian Safety	The proposal is required given the speed at which many vehicles travel down Murdoch Street.	Noted.
Visibility	<p>Pedestrian visibility is obscured to the motorists as vehicles legally and illegally parked during school zone hours, as well as buses parking in the bus zone.</p> <p>Moving the bus stop closer to the crossing would make it more difficult for cars to see crossing pedestrians and vice versa, especially during non-school hours.</p> <p>Move the bus zone to the departure side of the pedestrian crossing.</p>	<p>Enforcement team is to be notified to monitor for illegal parking in this area.</p> <p>The proposal will improve the pedestrian visibility for the motorists as the motorists must slow down and stop before the 'Stop' line.</p> <p>The relocation of the bus zone is not supported as it is provided within guidelines for visibility and as close as possible to the school entrance promoting safe and efficient access to the school for students travelling by public transport.</p>

CONCLUSION

Given the support for the proposal and the proposed works will increase pedestrian safety, visibility between approaching drivers and crossing pedestrians and helps to reduce vehicle speeds. It is recommended that Committee endorse the proposal to upgrade the existing pedestrian crossing to a children's crossing with associated relocation of parking restrictions and installation of 6m 'Stop' line marking north and south of the pedestrian crossing on Murdoch Street, Cremorne as shown on the attached plan.

Murdoch Street, Cremorne – Proposed Children’s Crossing



Existing		Proposed	
	"No Stopping"		"No Stopping"
	"2P 8:30am-6pm Mon-Fri Permit Holders Excepted Area 29"		"2P 8:30am-6pm Mon-Fri Permit Holders Excepted Area 29"
	"Unrestricted Parking"		"No Parking 8am-9am; 3pm-4pm School Days"
	"No Parking 8am-9am; 3pm-4pm School Days"		"Bus Zone 8am-9am; 2:30pm-4pm School Days"
	"Bus Zone 8am-9am; 2:30pm-4pm School Days"		



5.3. Traffic Delegations

AUTHOR: Narelle Lamond, Traffic Operations Officer

ENDORSED BY: Gary Parsons, Director Open Space and Infrastructure

ATTACHMENTS:

1. Traffic Delegations [5.3.1 - 4 pages]

PURPOSE:

To report to the Committee matters endorsed under delegated authority to the Traffic & Transport Operations Manager.

EXECUTIVE SUMMARY:

Attached is a list of recommendations endorsed under delegated authority to the Traffic & Transport Operations Manager. Endorsement was obtained for the attached items with concurrence of Transport for NSW, the NSW Police and the local State Members.

FINANCIAL IMPLICATIONS:

There are no direct financial implications arising from this report.

RECOMMENDATION:

1. **THAT** the information regarding Delegated Authority items be received.

LINK TO COMMUNITY STRATEGIC PLAN

The relationship with the Community Strategic Plan is as follows:

2. Our Built Infrastructure

2.1 Infrastructure and assets meet diverse community needs

2.3 Prioritise sustainable and active transport

2.4 Efficient traffic mobility and parking

5. Our Civic Leadership

5.1 Lead North Sydney's strategic direction

CONSULTATION REQUIREMENTS

Community engagement is not required.

**ENDORSED FOR PROJECTS UNDER
DELEGATED AUTHORITY TO THE TRAFFIC & TRANSPORT OPERATIONS MANAGER
558 th TRAFFIC COMMITTEE – 13 October 2023**

No.	Street	Location	Precinct, Ward, Electorate	Issue	Recommendation	Appr	Date	ECM	Comments
Resident Parking									
Nil									
Temporary Road Closures									
23-080	Gerard Ln	25A Reynolds St	Cremorne Cammeraygal, North Shore	Temporary Road Closure	<p>1.THAT the Committee raise no objection to the temporary road closure of Gerard Ln between Winnie St and Ada St for 11.09.23-12.09.23, from 7am-5pm, for the purpose of concrete pours, deliveries, and excavation, as per the submitted application and council's standard road closure conditions. Approval is subject to managed access to all affected properties and the applicant notifying all affected residents/tenants as per Council's standard conditions of approval.</p> <p>1.THAT should the Committee receive an application for an extension or alternative date/s to carry out these works due to inclement weather or operational delays, that application be approved, subject to Police Permit approval.</p>	Y	22.08.2023	9692734	11/12 Sep
23-081	Willoughby Rd	77 Willoughby Rd	Crow's Nest Cammeraygal, North Shore	Temporary Road Closure	<p>1.THAT the Committee raise no objection to the temporary road closure of Gerard Ln between</p>	Y	22.08.2023	9693113	20.09.23

No.	Street	Location	Precinct, Ward, Electorate	Issue	Recommendation	Appr	Date	ECM	Comments
					Holtermann St and Chapel Ln for 20.09.23-30.09.23, from 7am-3pm, for the purpose of deliveries and excavation, as per the submitted application and council's standard road closure conditions. Approval is subject to managed access to all affected properties and the applicant notifying all affected residents/tenants as per Council's standard conditions of approval. 2.THAT should the Committee receive an application for an extension or alternative date/s to carry out these works due to inclement weather or operational delays, that application be approved, subject to Police Permit approval.				
Special Use Zones									
23-082	Christie St	21 Christie St	Wollstonecraft Cammeraygal, North Shore	Install a Works Zone	1)THAT the Committee endorse the Installation of a 11.4 metre Work Zone for 21 Christie Street is subject to the applicant paying all appropriate Council advertised fees and charges, including the cost of the signage.	Y	01.09.2023	9706761	
Regulatory Signs									
23-079	Harbourview Cres	at Lavender St	Lavender Bay, Cammeraygal, North Shore	Relocate Stop Line forward	THAT the Committee relocates the existing stop line approx.1m forward to improve visibility for	Y	22.08.2023	9693113	

No.	Street	Location	Precinct, Ward, Electorate	Issue	Recommendation	Appr	Date	ECM	Comments
					vehicles existing Harbourview Crescent onto Lavender Street				
23-083	Brightmore Street	Cremorne	Brightmore, St Leonards, Willoughby	No Stopping restriction	<p>THAT the Committee is to install the following 'No Stopping' restriction:</p> <ul style="list-style-type: none"> • 22m 'No Stopping' restriction east of Bennelong Road on the southern side of Brightmore Street • 19m 'No Stopping' restriction west of Levick Street on the southern side of Brightmore Street 	Y	31.08.2023	9704768	
23-084	Anzac Avenue	Cammeray	Anzac Park, St Leonards, Willoughby	Bus Zone restriction	<p>THAT the Committee is to install the following 'Bus Zone' restriction:</p> <p>'Bus Zone 8:30am-9am; 2:30pm-4pm School Days' on the western side of Anzac Avenue north of Ernest Street.</p>	Y	13.10.2023	9717826	
23-086	Warringa Avenue	Neutral Bay	Kurraba, Cammeraygal, North Shore	Extend No Stopping Restriction	<p>THAT the Committee is to extend the 'No Stopping' restriction by 10m on the western side of Warringa Avenue, south of Lower Wycombe Road, Neutral Bay.</p>	Y	12.09.2023	9718077	
Signs Across Driveways									
23-078	Ben Boyd	70 Ben Boyd Rd	Neutral, Cammeraygal, North Shore	Driveway line markings	<p>THAT the Committee raise no objection to the installation of a Driveway line marking to the frontage</p>	Y	22.08.23	9692734	

No.	Street	Location	Precinct, Ward, Electorate	Issue	Recommendation	Appr	Date	ECM	Comments
					of 70 Ben Boyd Rd Neutral Bay NSW 2089				
Warning Signs									
Construction Management Plan									
Australian Road Rules Compliance Signs									
NIL									
Traffic Facilities									
NIL									
Council Decisions									
NIL									

6. Informal Items for Consideration

Nil

7. Local Development Advisory Committee Items for Consideration

Nil

8. General Business

9. Closure