

## 5.2. Parking Changes – Car Share

**AUTHOR:** Max White, Sustainable Transport Project Coordinator

**ENDORSED BY:** Gary Parsons, Director Open Space and Infrastructure

### ATTACHMENTS:

1. Attachment A Community Engagement Strategy New Car Share Applications. [5.2.1 - 5 pages]
2. Attachment B Proposed Car Share Signage [5.2.2 - 16 pages]
3. Attachment C Submissions [5.2.3 - 25 pages]

### PURPOSE:

The purpose of this report is to review proposed parking changes related to fourteen (14) dedicated car share applications and detail the outcomes of community engagement for each bay.

### EXECUTIVE SUMMARY:

- The Car Share providers GoGet and Popcar have proposed fourteen (14) dedicated car share spaces.
- The car share providers submitted applications for the locations, which included three months usage data and memberships within a 250-metre radius of each location.
- North Sydney Council support Car Share schemes as they reduce the level of private vehicle ownership, reduce pressure on parking, as one car/space can cater for many residents and reduce traffic congestion caused by drivers who are traffic 'cruising' as they look for parking.
- Proposed dedicated car share bays are aligned with the North Sydney Car Share Policy and Dedicated Car Share Community Engagement Strategy.

### FINANCIAL IMPLICATIONS:

There will be no financial implications to Council.

### RECOMMENDATION:

1. **THAT** the Committee endorse the reallocation of parking in the following locations as "Authorised Car Share Vehicles Excepted Area 100":
  - a. On the northeastern side of Nicholson Street, Wollstonecraft between the points 25.0 metres and 31.0 meters (1 car space) south of Oxley Street as "Authorised Car Share Vehicles Excepted Area 100" to be attributed to GoGet.
  - b. On the northern side of Albany Street, Crows Nest between the points 8.0 metres and 14.0 meters (1 car space) east of Zig Zag Lane as "Authorised Car Share Vehicles Excepted Area 100" to be attributed to GoGet.

- c. On the southern side of Atchison Street, Crows Nest between the points 16.0 metres and 22.0 meters (1 car space) east of Willoughby Road as "Authorised Car Share Vehicles Excepted Area 100" to be attributed to GoGet.
- d. On the western side of Waters Road, Neutral Bay between the points 21.0 metres and 27.0 meters (1 car space) south of Belgrave Street as "Authorised Car Share Vehicles Excepted Area 100" to be attributed to GoGet.
- e. On the western side of Edward Street, North Sydney between the points 6.0 metres and 12.0 meters (1 car space) north of Lord Street as "Authorised Car Share Vehicles Excepted Area 100" to be attributed to GoGet.
- f. On the western side of High View Avenue, Neutral Bay between the points 7.0 metres and 13.0 meters (1 car space) north of Lindsay Street as "Authorised Car Share Vehicles Excepted Area 100" to be attributed to Popcar.
- g. On the eastern side of Spruson Street, Neutral Bay between the points 6.0 metres and 12.0 meters (1 car space) north of Phillips Street as "Authorised Car Share Vehicles Excepted Area 100" to be attributed to Popcar.
- h. On the western side of Premier Street, Neutral Bay between the points 6.0 metres and 12.0 meters (1 car space) south of Yeo Street as "Authorised Car Share Vehicles Excepted Area 100" to be attributed to Popcar.
- i. On the southern side of 88 Bays Road, Waverton between the points 10.0 metres and 16.0 meters (1 car space) east of Carr Street as "Authorised Car Share Vehicles Excepted Area 100" to be attributed to Popcar.
- j. On the western side of Nicholson Street, Wollstonecraft between the points 6.0 metres and 12.0 meters (1 car space) south of Lamont Street as "Authorised Car Share Vehicles Excepted Area 100" to be attributed to Popcar.
- k. On the western side of Paling Street, Cremorne between the points 0.0 metres and 2.5 meters (1 car space) north of Parraween Street as "Authorised Car Share Vehicles Excepted Area 100" to be attributed to Popcar.
- l. On the northern side of Lavendar Street, McMahons Point between the points 16.0 metres and 22.0 meters (1 car space) west of Miller Street as "Authorised Car Share Vehicles Excepted Area 100" to be attributed to Popcar.
- m. On the western side of Harriot Street, Waverton between the points 6.0 metres and 12.0 meters (1 car space) south of Crows Nest Road as "Authorised Car Share Vehicles Excepted Area 100" to be attributed to Popcar.
- n. On the northern side of Hardie Street, Neutral Bay between the points 6.0 metres and 12.0 meters (1 car space) east of Premier Street as "Authorised Car Share Vehicles Excepted Area 100" to be attributed to Popcar.

## **LINK TO COMMUNITY STRATEGIC PLAN**

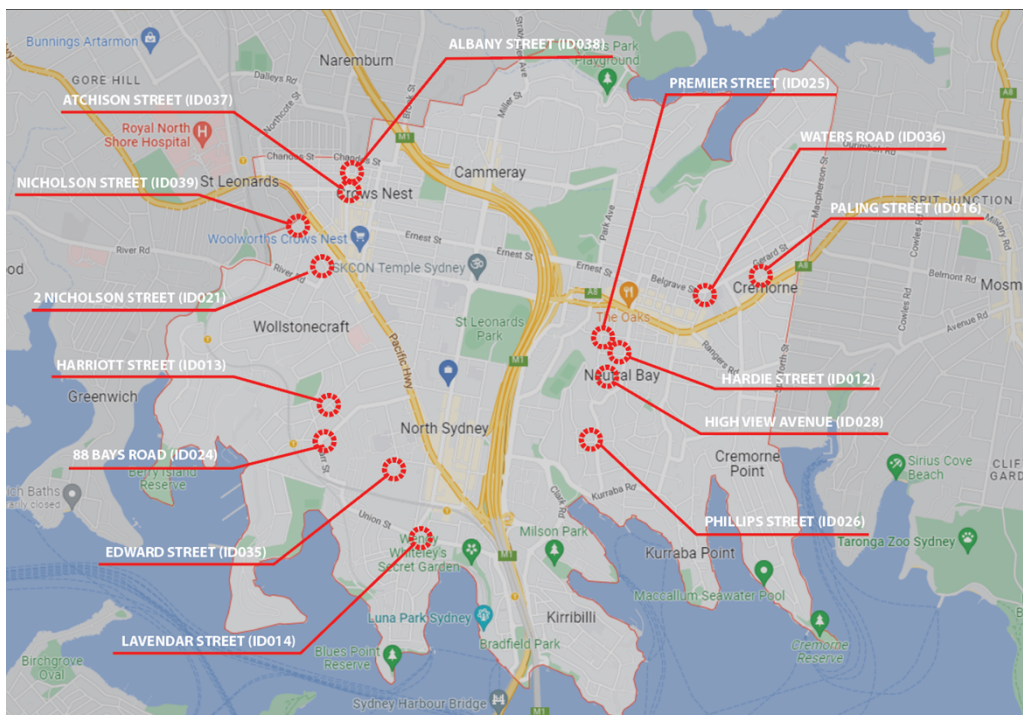
The relationship with the Community Strategic Plan is as follows:

- 2. Our Built Infrastructure
- 2.3 Prioritise sustainable and active transport
- 2.4 Efficient traffic mobility and parking

## BACKGROUND

The North Sydney Community Strategic Plan North Sydney Vision 2040 ('CSP') sets a target to increase the number of car share membership in the North Sydney LGA. The expanded provision of on-road dedicated car share spaces in appropriate locations is required to achieve this target. In line with the CSP, this report recommends the proposed dedicated parking spaces in:

- Nicholson Street, Wollstonecraft (ID039)
- Albany Street, Crows Nest (ID038)
- Atchison Street, Crows Nest (ID037)
- Waters Road, Neutral Bay (ID036)
- Edward Street, North Sydney (ID035)
- Highview Avenue, Neutral Bay (ID028)
- Phillips Street, Neutral Bay (ID026)
- Premier Street, Neutral Bay (ID025)
- 88 Bays Road, Waverton (ID024)
- 2 Nicholson Street, Wollstonecraft (ID021)
- Paling Street, Cremorne (ID016)
- Lavendar Street, North Sydney (ID014)
- Harriot Street, Waverton (ID013)
- Hardie Street, Neutral Bay (ID012)



*Map. Location of proposed dedicated car share bays*

Car Share schemes provide benefits to the community, not just scheme members as they:

- reduce the level of private vehicle ownership.
- reduce pressure on parking, as one car/space can cater for many residents.

- reduce traffic congestion caused by drivers who are traffic 'cruising' as they look for parking.

Car share schemes also provide a transport option for residents and community members who don't or can't own their own car.

## **CONSULTATION REQUIREMENTS**

Community engagement has occurred in accordance with Council's Community Engagement Protocol. The detail of this report provides the outcomes from the engagement for Council to consider prior to adoption.

**Relates to ECM No:** 9117697, 9117706, 9117710, 9117730, 9124085, 9124107, 9124122, 9124132, 9124183, 9237685, 9237688, 9237696, 9237700, 9237703

**Standard or Guideline Used:** TTD 2018/001 Guidelines for on-street fixed space car share parking

**Signs & Lines Priority:** Low

**Precinct and Ward:** Precinct: Wollstonecraft, Euroka, Waverton, Lavendar Bay, Holterman, Hayes, Neutral, Brightmore. Wards: St Leonards, Cammeraygal.

**Impact on Bicycles:** None

**Impact on Pedestrians:** None

**Impact on Parking:** 14 timed parking spaces to be changed to 'Authorised Car Share Vehicles Exceeded Area 100'

## **DETAIL**

Car Share operators seeking to install a new dedicated car share space are required to submit an application to Council that contains information relevant to the criteria set out in the North Sydney Car Share Policy, and a justification for the installation of the space.

Applications are subject to a fee outlined in the North Sydney Fees and Charges.

The application process includes the following steps:

1. Application
2. Community Consultation
3. Traffic Committee
4. Installation

Further details on the community consultation process are outlined in Attachment A Community Engagement Strategy New Car Share Applications.

## Consultation

Consultation was conducted in line with the Community Engagement Strategy New Car Share Applications (Attachment A). The strategy specifies new car share applications must be exhibited to the community for 14 days consultation. Promotion includes onsite signage and mail out to residents within 100 metres of the location.

Full submissions are available Attachment C Submissions.

Feedback on the 14 applications closed Thursday 4 May 2023.

### **Consultation Submissions**

The main concern raised by submitters was the loss of parking. Council acknowledge that parking is a concern for residents and difficulty locating parking can cause issues with access.

On-street parking is a finite resource and additional on-street parking is rarely possible. This means Council must use this resource more efficiently and Car Share is one tool that can free up on-street parking. Car Share can have significant benefits for residents in alleviating parking capacity issues.

Car share has been shown to reduce strain on parking. In a recent annual survey of GoGet, customers in North Sydney reported a steep decrease in car ownership after residents joined. The survey found that 30% of members had given up a car entirely since joining GoGet, combined with customers that already did not own a car, this results in 63% of North Sydney members no longer owning a car. These members reported that joining cars share enabled them to defer the purchase of a car.

The following table summarises the consultation feedback, identifies community suggestions and Council staff recommendations. Locations, existing parking restrictions and proposed parking restrictions can be found in Attachment B Proposed Car Share Signage.

#### **Nicholson Street, St Leonards (ID039)**

A total of 10 submissions were received for the dedicated Car Share on Nicholson Street. Of these submissions, 6 (60%) opposed and 4 (40%) supported the location.

#### *Themes*

##### Support

- improved access
- reduced traffic congestion
- improved air quality
- accessibility
- convenience

##### Oppose

- loss of parking
- existing Car Share bays nearby

*Recommendation*

Proceed with proposed dedicated car share bay.

**Albany Street, Crows Nest (ID038)**

A total of 8 submissions were received for the dedicated Car Share on Albany Street. Of these submissions, 4 (50%) supported, 3 (37.5%) opposed and 1 (12.5%) was neutral.

*Themes*

**Support**

- convenience

**Oppose**

- Loss of parking
- Business impacts

**Neutral**

N/A

*Suggestion*

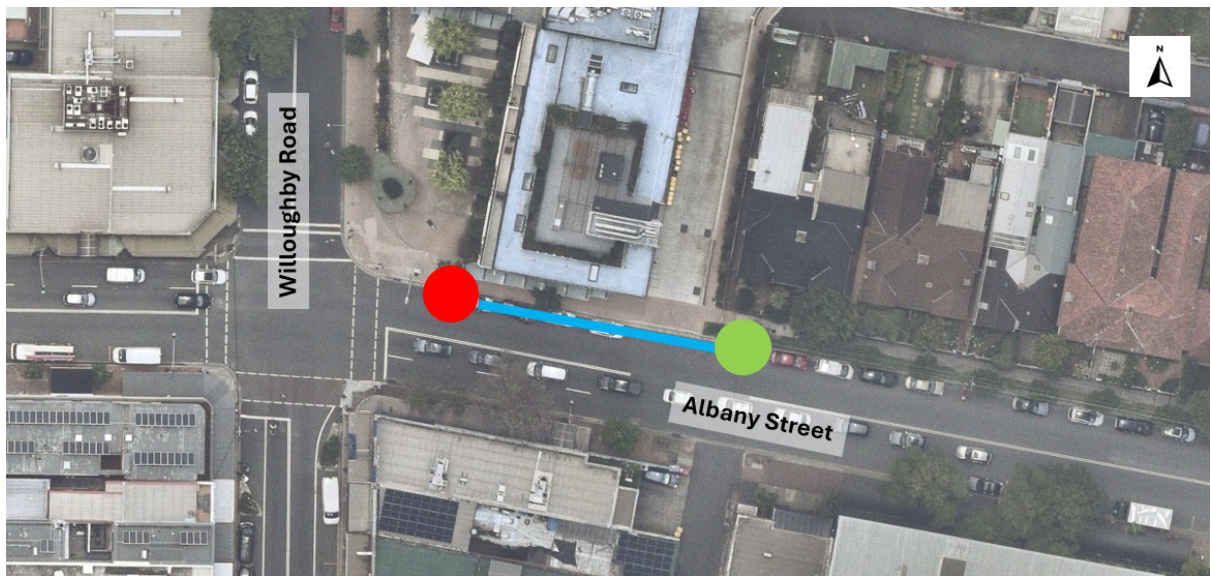
- moving the location further east down Albany Street to accommodate childcare drop off.
- Using car share payments to subsidise parking permits

*Response*

- Car share bay to be relocated 35 metres further east to accommodate childcare drop-off.
- Car Share providers pay for car share spaces and yearly permits in line with the North Sydney Fees and Charges

*Recommendation*

Bay to be relocated to outside 78-80 Albany Street, approximately 35 metres east of the original location to accommodate childcare drop off.



Map. Existing proposal red circle, updated location green circle, distance blue line.

### **Atchison Street, Crows Nest (ID037)**

There were no submissions received for the Atchison Street location.

#### *Recommendation*

Proceed with proposed dedicated car share bay.

### **Waters Road, Neutral Bay (ID036)**

A total of 15 submissions were received for the dedicated Car Share on Waters Road, Neutral Bay. Of these submissions, 10 (66%) opposed and 5(33%) supported the location.

#### *Themes*

##### Support

- Convenience

##### Oppose

- Loss of parking

#### *Recommendation*

Proceed with proposed dedicated car share bay.

### **Edward Street, North Sydney (ID035)**

A total of 15 submissions were received for the dedicated Car Share on Waters Road, Neutral Bay. Of these submissions, 10 (66%) opposed and 5(33%) supported the location.

#### *Themes*

##### Support

- Demand for existing car share

##### Oppose

- Loss of parking
- existing Car Share bays nearby

#### *Suggestion*

- moving the location to Mount Street
- using EVs rather than petrol vehicles

#### *Response*

- there is no clear rationale for why the car share space would be more preferred or effective on Mount Street. The location was selected by the provider for close access for customers.
- EV Car Share would require EV charging stations. This will be considered in future applications

- address issues with school drop-off and pick up
- This is outside the scope of the car share consultation

*Recommendation*

Proceed with proposed dedicated car share bay.

**High View Avenue, Neutral Bay (ID028)**

A total of 26 submissions were received for the dedicated Car Share on High View Avenue. Of these submissions, 22 (85%) opposed, 2 (7.5%) supported the location, and 2 (7.5%) were neutral.

*Themes*

Support

- general support

Oppose

- loss of parking
- accessibility
- existing Car Share bays nearby

*Suggestion*

- suggested relocating the bay to the far south section of High View Avenue to prevent access issues for property.
- reserve a car space for emergency vehicles

*Response*

- the dedicated bay would not hinder access to the adjacent property
- this is not within the scope of the consultation

*Recommendation*

Proceed with proposed dedicated car share bay.

**Phillips Street, Neutral Bay (ID026)**

A total of 22 submissions were received for the dedicated Car Share on Phillips Street, Neutral Bay. Of these submissions, 19 (86%) opposed and 3 (3%) supported the location.

Submissions included a petition from residents, which has been included in the submission total.

*Themes*

Support

- General support

Oppose

- loss of parking



- accessibility

*Suggestion*

- relocate bay due to disability parking, bus zone and existing car share near proposed bay.
- requests for compensation for parking loss and car share spaces

*Response*

- due to specified constraints, the dedicated bay to be moved outside 15-17 Spruson Street.
- car share providers pay a yearly amount for the dedicated bay and permits.

*Recommendation*

Bay to be relocated to outside 15-17 Spruson Street, approximately 100 metres west of the original location.



*Map. Existing proposal red circle, updated location green circle, distance (in meters) blue line.*

**Premier Street, Neutral Bay (ID025)**

A total of 7 submissions were received for the dedicated Car Share on Premier Street, Neutral Bay. Of these submissions, 11 (79%) opposed and 3 (21%) supported the location.

*Themes*

**Oppose**

- loss of parking
- commercializing public land
- noise impacts from late night activity
- existing car share nearby

*Recommendation*

Proceed with proposed dedicated car share bay.

**88 Bays Road, Waverton (ID024)**

A total of 5 submissions were received for the dedicated Car Share on Bays Road, Waverton. Of these submissions, 3 (60%) supported and 2 (40%) opposed the location

*Themes*

Support

- Reduces traffic congestion.
- convenience

Oppose

- Loss of parking

*Recommendation*

Proceed with proposed dedicated car share bay.

**2 Nicholson Street, Wollstonecraft (ID021)**

A total of 2 submissions were received for the dedicated Car Share on 2 Nicholson Street, Wollstonecraft. Of these submissions 2 (100%) opposed the location

*Themes*

Oppose

- Loss of parking

*Suggestion*

- Relocate bay to empty spaces in the paid parking further along Nicholson Street

*Response*

Car Share providers select parking that provides proximity to members and maximises visibility of the space. The parking space selected is the preferred location considering these factors.

*Recommendation*

Proceed with proposed dedicated car share bay.

**Paling Street, Cremorne (ID016)**

A total of 19 submissions were received for the dedicated Car Share on Paling Street, Cremorne. Of these submissions 12 (63%) opposed and 7 (37%) supported the location.

### Themes

#### Oppose

- Loss of parking

#### Support

- General support

### Suggestion

- using EVs rather than petrol vehicles
- remove metered parking

### Response

EV Car Share would require EV charging stations. This will be considered in future applications

Car Share providers select parking that provides proximity to members and maximises visibility of the space. The parking space selected is the preferred location considering these factors.

### Recommendation

Proceed with proposed dedicated car share bay.

### Lavender Street, North Sydney (ID014)

A total of 6 submissions were received for the dedicated Car Share on Lavender Street, North Sydney. Of these submissions 4 (66%) opposed and 2 (33%) supported the location.

### Themes

#### Oppose

- loss of parking
- already car share nearby
- commercialisation of public space

#### Support

- reduce car dependency

### Recommendation

Proceed with proposed dedicated car share bay.

### Harriott Street, Waverton (ID013)

A total of 7 submissions were received for the dedicated Car Share on Harriot Street, Waverton. Of these submissions 7 (100%) opposed the location.

### Themes

#### Oppose

- loss of parking

#### *Suggestion*

- Relocate bay to Crows Nest Road, Waverton.
- Car share on council owned property.
- Change existing timed parking from 1 hour to 2 hours.

#### *Response*

- no clear rationale for why the car share space should be moved to a nearby location.
- Council is in discussion with Car Share providers to utilise space in Council owned car parks.
- This is not within the scope of the project.

#### *Recommendation*

Proceed with proposed dedicated car share bay.

### **Hardie Street, Neutral Bay (ID012)**

A total of 3 submissions were received for the dedicated Car Share on Hardie Street, Neutral Bay. Of these submissions 2 (66%) opposed and 1 (33%) supported the location.

#### *Themes*

##### Oppose

- Loss of parking
- Traffic congestion
- Low existing use of car share

##### Support

- Improve sustainability of community

#### *Recommendation*

Proceed with proposed dedicated car share bay.

## COMMUNITY ENGAGEMENT STRATEGY



# New Car Share Applications

Prepared June 2022

Amended September 2022

Councils are required under the *Local Government Act 1993* to inform the community of issues that potentially affect their way of life. North Sydney Council is committed both in principle and in practice, to engaging on matters affecting the North Sydney community.

The purpose of this project-specific Community Engagement Strategy is to outline the ways stakeholders can be involved in the decision-making process. Community engagement opportunities will be provided across a range of 'engagement' levels.

### 1. Introduction

Council is committed to engaging the community to ensure adequate opportunity is provided for feedback on proposed car share locations. Council supports car share schemes as they are identified in the *North Sydney Community Plan* and the *North Sydney Transport Strategy (2018)* to encourage sustainable transport. Car share schemes provide potential benefits to the community, not just scheme members as they can:

- reduce the level of private vehicle ownership
- reduce pressure on parking, as one car/space can cater for many residents
- reduce traffic congestion caused by traffic 'cruising' to find parking.

Car share schemes also provide a transport option for residents and community members who don't or can't own their own car.

#### 1.1 Council's Community Engagement Protocol

This strategy has been prepared in accordance with Council's *Community Engagement Protocol*. The Protocol is used to determine the level of 'level(s) of impact' applicable to this project/decision (proposal). This proposal has been determined as:

LEVEL OF IMPACT	LEVEL OF ENGAGEMENT
Low/Local	Inform and Consult

#### 1.2 Relevant Legislation, Policies and Plans

This Engagement Strategy is informed by the following Council policies and plans:

- Car Share Policy
- Community Strategic Plan
- Compliance and Enforcement Policy
- Parking Management and Enforcement Policy
- Resident Parking Permit Policy

## New Car Share Applications Community Engagement Strategy

Council used the framework shown below in Table 1.1 to select the most appropriate level(s) of engagement for this proposal to ensure an appropriate range of engagement levels and methods were offered:

LEVEL	DESCRIPTION
Inform	Providing balanced and objective information to help the community understand problems, alternatives, opportunities and/or solutions
Consult	Obtain public feedback on alternatives and/or decisions
Involve	Work directly with the community throughout the process to ensure that public concerns and aspirations are consistently understood and considered
Collaborate	Partner with the public in each aspect of the decision including the development of alternatives and identification of the preferred solution

Table 1.1 Derived from the IAP2 Public Participation Spectrum

### 2. Background

Council's *Car Share Policy* was introduced in August 2005. In August 2013, Council adopted a new process for notifying the community of proposed car share installation prior to the matter being referred to the North Sydney Traffic Committee. The Policy was amended in September 2022 to include the requirement that once the application fee is received, that Council notifies the community of the proposed location. The period for providing feedback on each proposed location is a minimum of two (2) weeks i.e. no less than 14 days.

Initially, Council's Traffic & Transport Operations Department assess the appropriateness of a proposed car share location. If the location is deemed appropriate, a temporary sign is placed next to the proposed location indicating that the location is being considered for a car share parking space. Notification letters are distributed to residents and businesses within a 100m radius and opportunities for feedback are provided through letter, email and online form hosted via the Your Say North Sydney webpage.

The signs are installed at each location for a minimum of two (2) weeks. An example of the sign is provided below.



# New Car Share Applications Community Engagement Strategy

## 3. Community Engagement Strategy

### 3.1 Who are our community stakeholders?

The Engagement Strategy identifies the following groups to engage with in the local community:

- residents
- businesses
- related car share provider (applicant).

### 3.2 Key Communication Messages

Per application received:

- Car share benefits the community as it can reduce the level of private vehicle ownership, reduce pressure on parking as one car/space can cater for many residents, and reduce traffic congestion caused by traffic 'cruising' to find parking. Car share schemes also provide a transport option for residents and community members who don't or can't own their own car.
- The community will be notified of each new car share application, giving a minimum of 14 days to provide feedback on the proposal.
- All feedback received will be collated and analysed and used to inform the recommendation. A recommendation to proceed (or not) with the car share location will be reported to the Traffic Committee. Approval of a car share location occurs after the Traffic Committee has approved the location and minutes of the Traffic Committee meeting have been reported to Council.
- The car share provider will be informed whether their application has been successful, and an invoice issued for the signage fee.
- Signage indicating the parking changes will be installed for a minimum 14 days before the car share signage is installed.

### 3.3 Assessment and Notification Process

The following table outlines the assessment process per application. Stakeholder engagement will occur as noted at Step 2.

STEP	DESCRIPTION
1. Car Share Provider Application	<p>A car share provider applies to Council via the Sustainable Transport Project Coordinator.</p> <p>Applications for new car share spaces must demonstrate that there are multiple potential users in the immediate area, and that there are no existing alternatives that service this demand.</p>

## New Car Share Applications Community Engagement Strategy

STEP	DESCRIPTION
	<p>An invoice is issued to the car share provider to pay the application fee as outlined in Council's annual <a href="#">Fees &amp; Charges Schedule</a>.</p>
2. Community Consultation	<p>Once the application fee is received, Council notifies stakeholders and seeks feedback on the appropriateness of the proposed location. The feedback is not voting as such, but it will assist in determining support for the proposed car share locations.</p> <p>The feedback period will be for a minimum of two (2) weeks (i.e. 14 days).</p> <p>Signage is erected at the site outlining the proposal to install car share parking, and letters are sent to residents and businesses within a 100m radius of the site.</p> <p>Feedback can be provided via:</p> <ul style="list-style-type: none"> <li>• email to <a href="mailto:yoursay@northsydney.nsw.gov.au">yoursay@northsydney.nsw.gov.au</a> (include reference to location)</li> <li>• letter posted to North Sydney Council, PO Box 12, North Sydney NSW 2059 (include reference to location)</li> <li>• online feedback form via the Your Say North Sydney site</li> </ul> <p>Council's Sustainable Transport Project Coordinator is available via phone call, however formal submissions must be made through the above methods.</p> <p>After the notification period has ended, submissions are collated and assessed, and submissions summary is prepared.</p>
3. Traffic Committee Approval	<p>If the site is deemed appropriate for car share, a recommendation to install the car share space is reported to the next available North Sydney Traffic Committee.</p> <p>The Traffic Committee may:</p> <ul style="list-style-type: none"> <li>• approve the car share application and proceed with installation</li> <li>• request further consultation to assess the need for the car share location; or</li> <li>• reject the car share application.</li> </ul> <p>Submitters will be informed of the outcome. A temporary sign will also be erected onsite a minimum of 14 days prior to the change in restriction, advising that the parking restrictions at this location will change and the signage will be replaced, indicating that this space will be reserved for car share parking.</p>
4. Signage Fee	<p>If the car share location is approved, the car share provider will be informed and issued with an invoice for the installation of signage. After payment is received, Council's Sustainable Transport Project Coordinator submits a Signage and Lines Instruction form to Council's Works Engineering</p>



## New Car Share Applications Community Engagement Strategy

STEP	DESCRIPTION
	Department.
5. Signage	The temporary signage at Step 3 will be replaced with the permanent new sign stating the new restriction.

The following methods will be used to notify and seek feedback on each proposal. Not listed in priority order.

METHOD	ENGAGEMENT LEVEL	PURPOSE
'Have Your Say' Web Page	Inform	Inform the community of the proposed car share location and provide ease of access to all information regarding the proposal. Includes FAQs.
Letterbox Drop/Direct Letter	Inform	Distributed to properties (residents and businesses) within a 100m radius of each application informing of the proposal and opportunity to provide feedback
Onsite Signage	Inform	Inform the general community of the proposed car share location and opportunity to provide feedback
eNewsletters - Council eNews, Business eNews, Precinct eNews	Inform	Inform subscribers of the proposed car share location and opportunity to provide feedback
Submissions	Consult	Free form feedback accepted by email or posted letter as well as via online form.

#### 4. Opportunity Cost/Rationale

Engaging the community in this proposal may entail financial costs to Council to achieve a high-quality engagement process. If the process is robust, community ownership of the decisions made will ensure efficient outcomes. Insufficient or poor-quality engagement can result in poor long-term decisions requiring further resources to rectify. The aim of a high-quality community engagement process is to make sustainable decisions. The engagement process will help Council staff and/or Councillors to understand the related recommendations rationale.

#### 5. Further Information

For further information contact Council's Max White, Sustainable Transport Project Coordinator, Traffic & Transport Operations Department:

Phone: 9936 8100  
 Email: [yoursay@northsydney.nsw.gov.au](mailto:yoursay@northsydney.nsw.gov.au)  
 Website: [www.northsydney.nsw.gov.au](http://www.northsydney.nsw.gov.au)



# Proposal

(ID039) Nicholson Street, St Leonards– Proposed Dedicated Car Share Bay



## Existing

■ ■ ■ ■ ■ "1P 8:30am-10am Mon-Fri PHE Area 18"

## Proposed

■ "1P 8:30am-10am Mon-Fri PHE Area 13"

■ "Authorised Car Share Vehicles Excepted"



# RELOCATED IN RESPONSE TO SUBMISSIONS

(ID038) Albany Street, Crows Nest– Proposed Dedicated Car Share Bay



### Existing



"2P 8:30am-6pm Mon-Fri  
2P 8:30am-12:30pm Sat"

### Proposed



"2P 8:30am-6pm Mon-Fri  
2P 8:30am-12:30pm Sat"

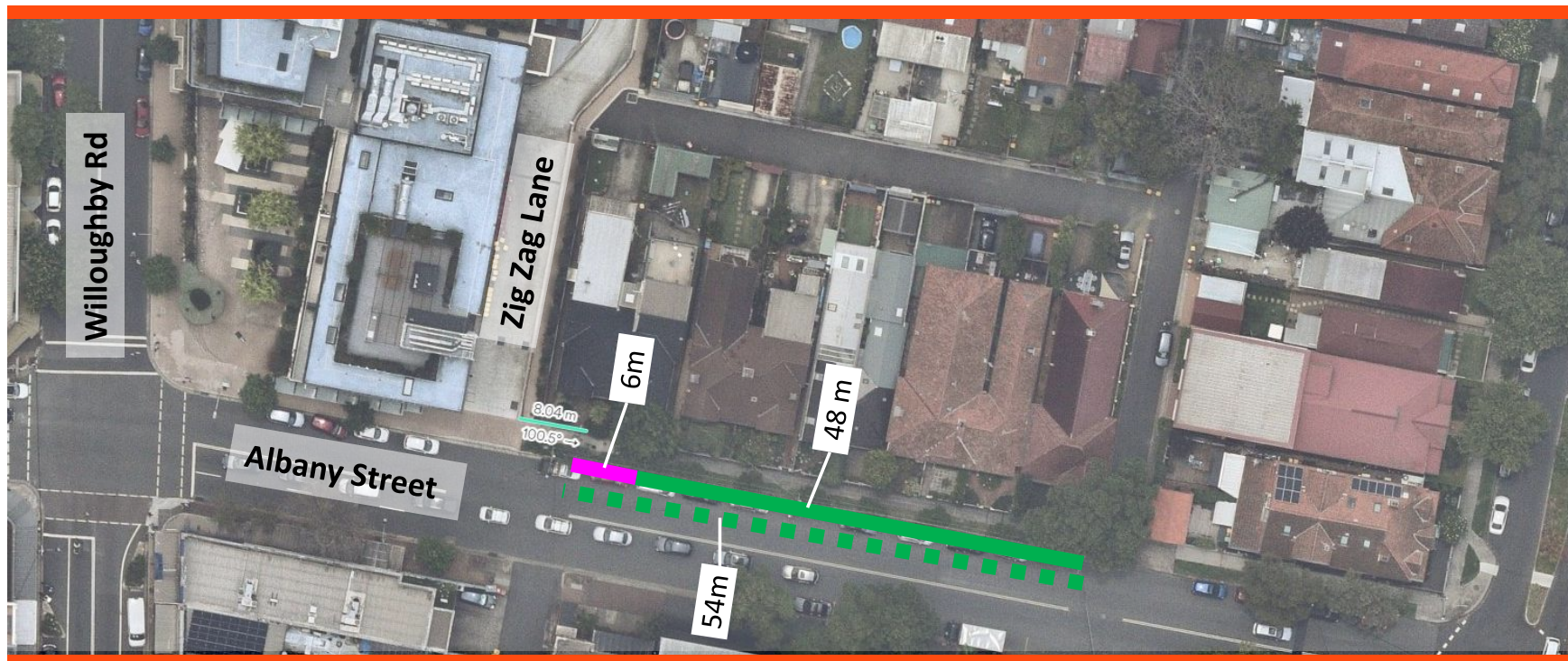


"Authorised Car Share Vehicles Excepted"



# Proposal – relocated in response to submissions

(ID038) Albany Street, Crows Nest– Proposed Dedicated Car Share Bay



### Existing

■ ■ ■ ■ ■ "2P 8:30am-6pm Mon-Fri, Permit Holders Excepted Area 19"

### Proposed

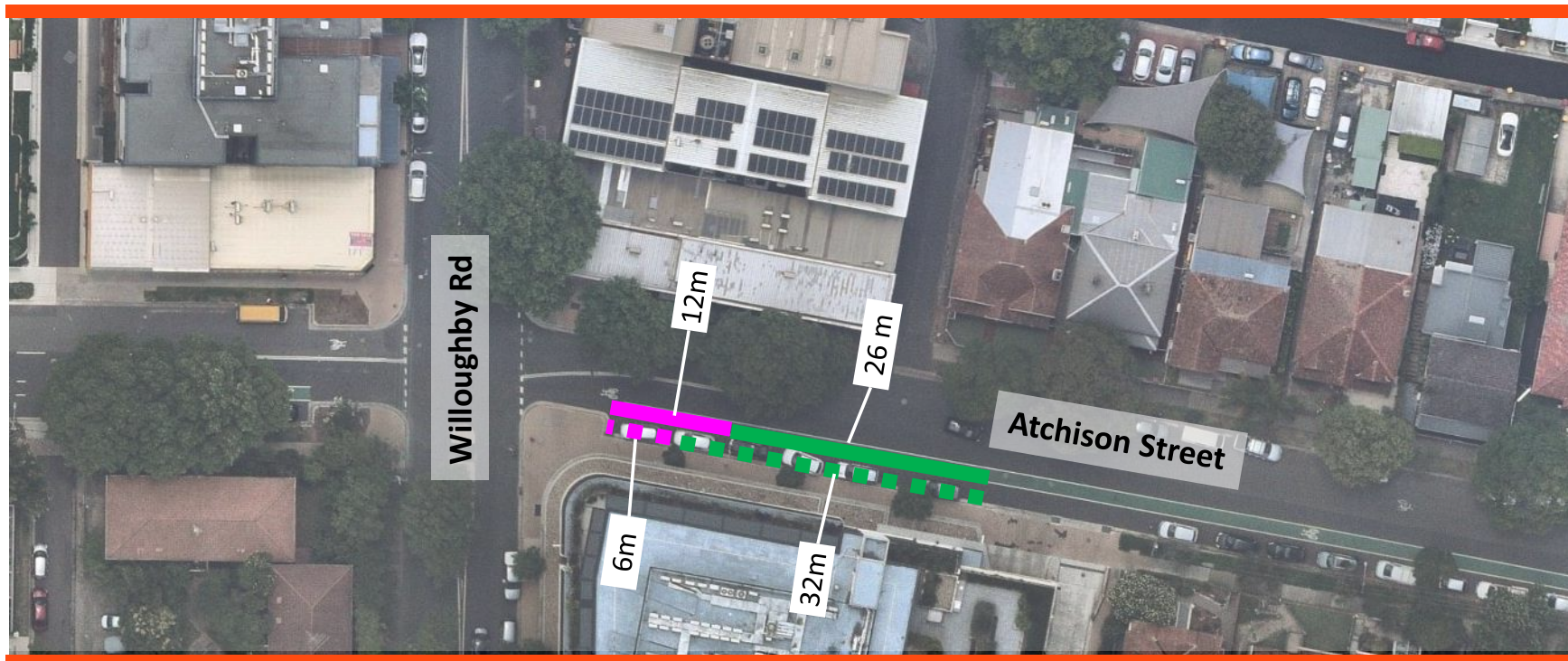
————— "2P 8:30am-6pm Mon-Fri, Permit Holders Excepted Area 19"

————— "Authorised Car Share Vehicles Excepted"



# Proposal

(ID037) Atchison Street, Crows Nest– Proposed Dedicated Car Share Bay



## Existing



"2P 8:30am-6pm Mon-Fri  
2P 8:30am-12:30pm Sat"



"Authorised Car Share Vehicles Excepted"

## Proposed



"2P 8:30am-6pm Mon-Fri  
2P 8:30am-12:30pm Sat"

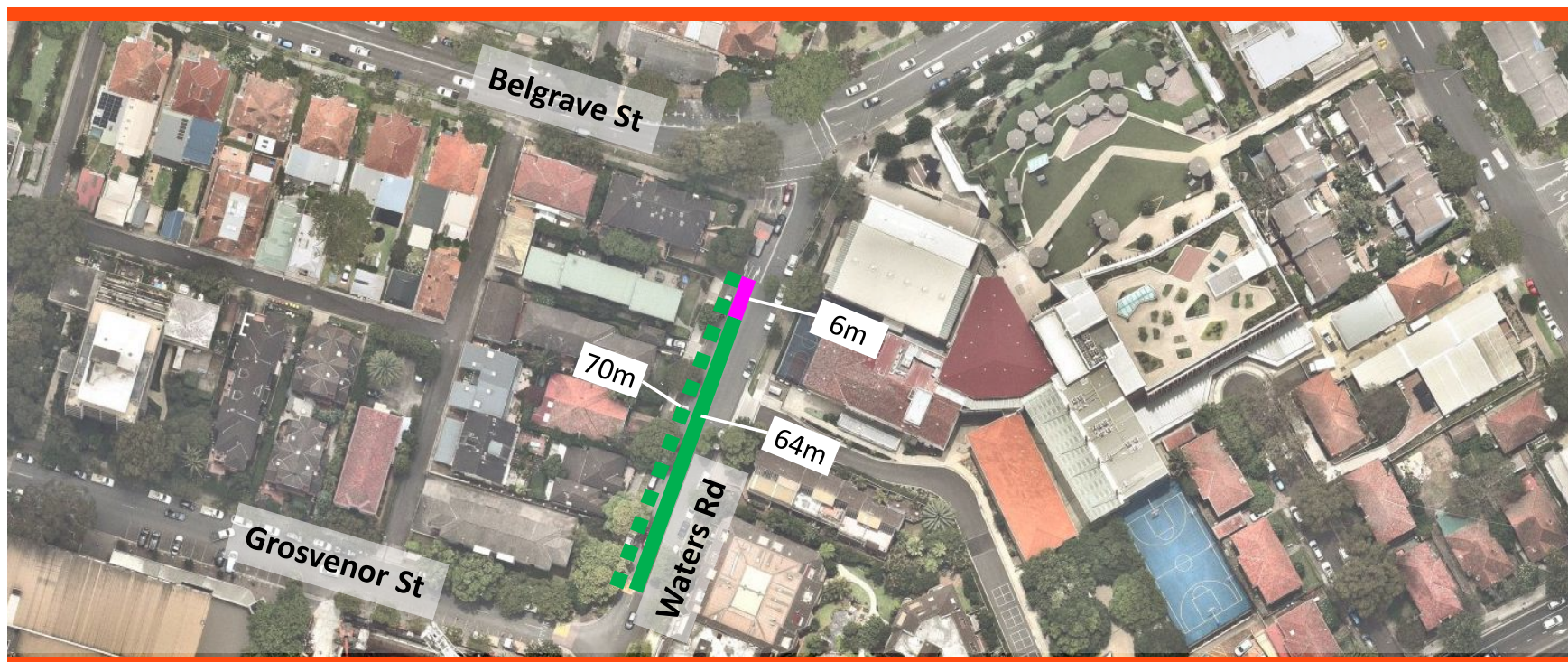


"Authorised Car Share Vehicles Excepted"



# Proposal

(ID036) Waters Road, Neutral Bay– Proposed Dedicated Car Share Bay



## Existing



“1P 8:30am-6pm Mon-Fri  
1P 8:30am-12:30pm Sat, Permitted  
Holders Excepted Area 27”

## Proposed



“1P 8:30am-6pm Mon-Fri  
1P 8:30am-12:30pm Sat, Permitted Holders  
Excepted Area 27”



“Authorised Car Share Vehicles Excepted”



# Proposal

(ID035) Edward Street, North Sydney– Proposed Dedicated Car Share Bay (ID035)



## Existing



"2P 8:30am-6pm Mon-Fri, Permitted Holders Excepted Area 9"

## Proposed



"2P 8:30am-6pm Mon-Fri, Permitted Holders Excepted Area 9"



"Authorised Car Share Vehicles Excepted"



# Proposal

(ID028) High View Avenue, Neutral Bay– Proposed Dedicated Car Share Bay



## Existing



“2P 8:30am-6pm Mon-Fri, Permitted Holders Excepted Area 30”

## Proposed



“2P 8:30am-6pm Mon-Fri, Permitted Holders Excepted Area 30”



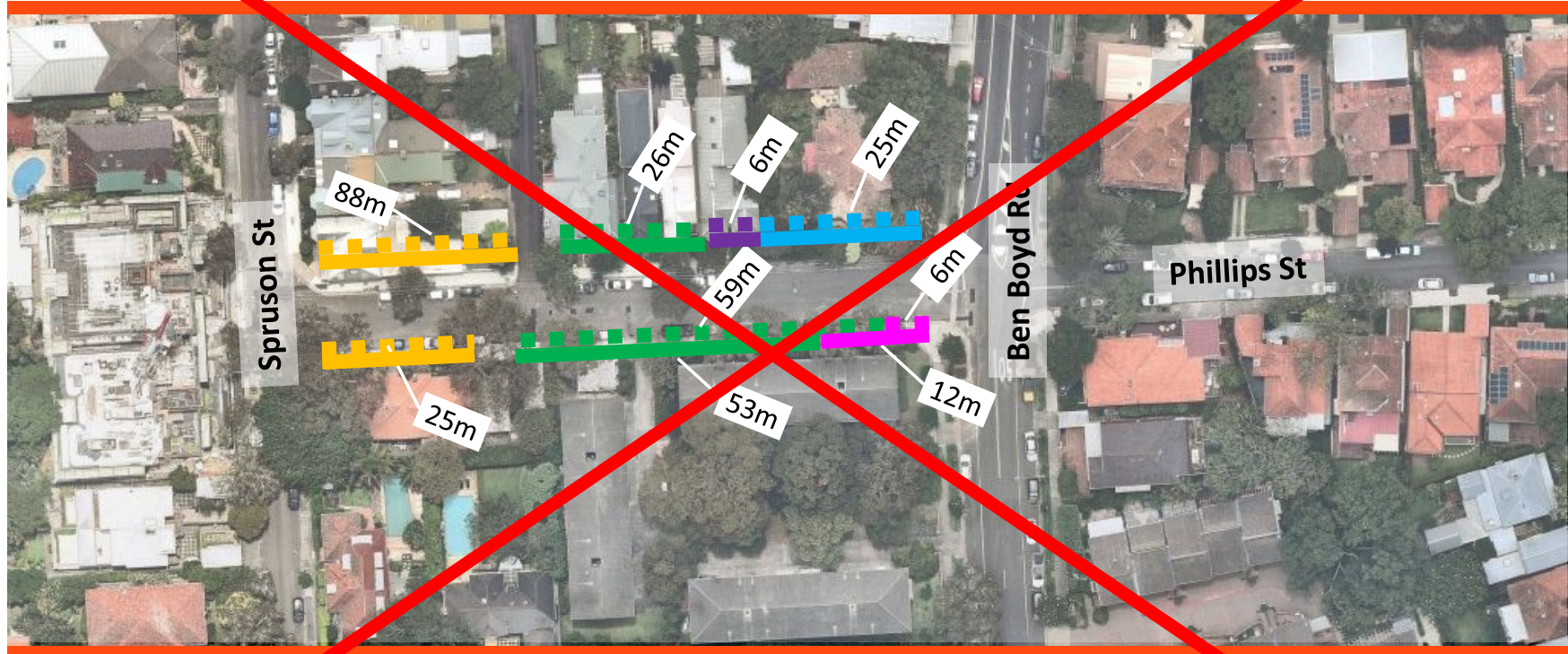
“Authorised Car Share Vehicles Excepted”





# RELOCATED IN RESPONSE TO SUBMISSIONS

(ID026) Phillips Street, Neutral Bay – Proposed Dedicated Car Share Bay



### Existing

- "2P 8:30am-6pm Mon-Fri, Permitted Holders Excepted Area 30 + 31"
- "Authorised Car Share Vehicles Excepted"
- "Bus Zone"
- Disabled Parking
- Not Signposted

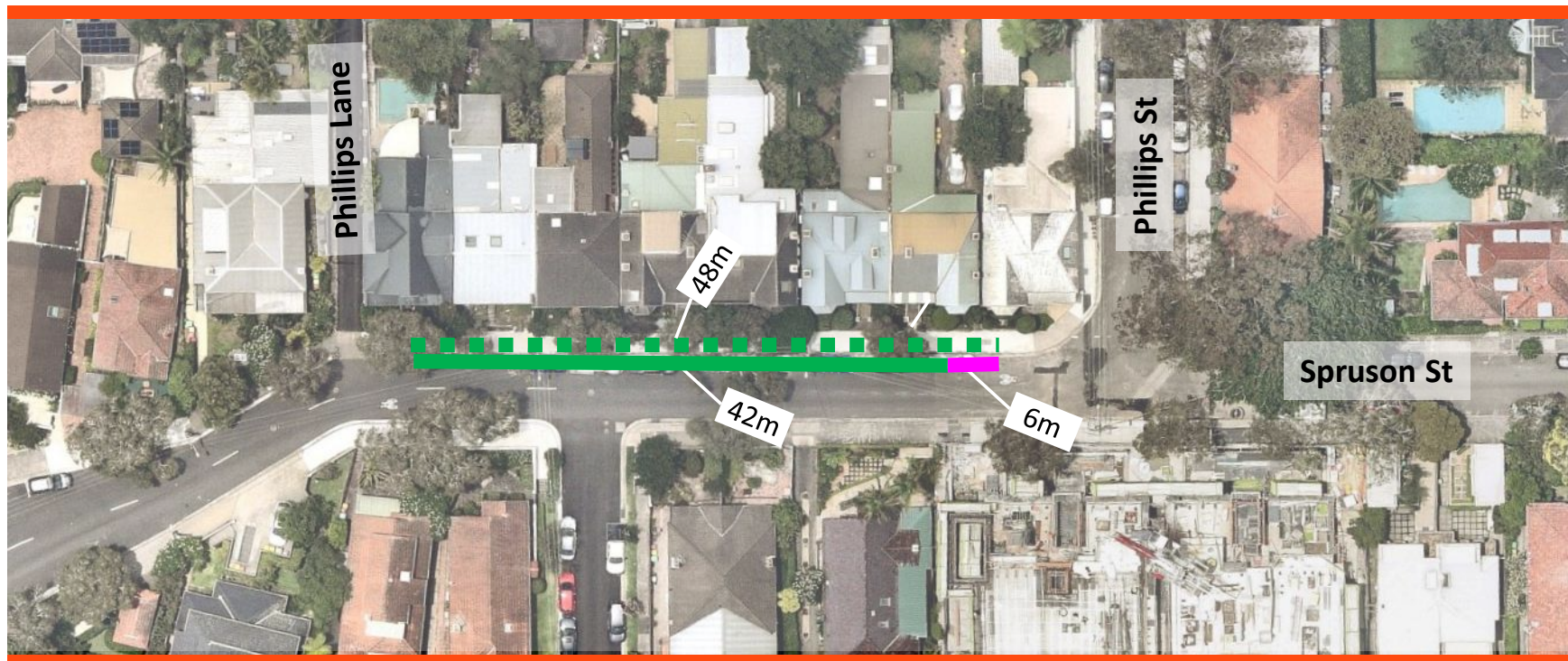
### Proposed

- "2P 8:30am-6pm Mon-Fri, Permitted Holders Excepted Area 30+ 31"
- "Authorised Car Share Vehicles Excepted"
- "Bus Zone"
- Disabled Parking
- Not Signposted



# Proposal - relocated in response to submissions

(ID026) Phillips Street, Neutral Bay– Proposed Dedicated Car Share Bay



## Existing



"2P 8:30am-6pm Mon-Fri, Permitted Holders Excepted Area 30"

## Proposed



"2P 8:30am-6pm Mon-Fri, Permitted Holders Excepted Area 30"

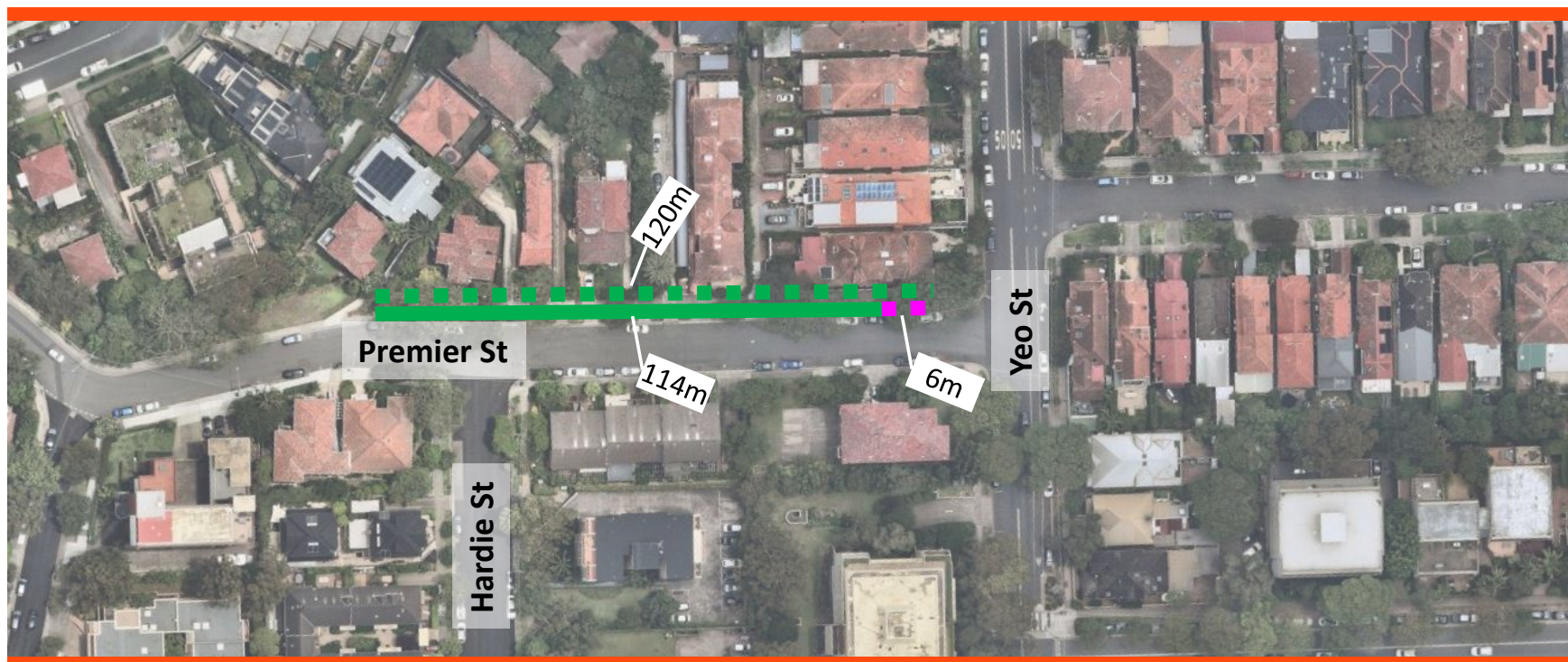


"Authorised Car Share Vehicles Excepted"



# Proposal

(ID025) Premier Street, Neutral Bay– Proposed Dedicated Car Share Bay



## Existing

- "2P 8:30am-6pm Mon-Fri, Permitted Holders Excepted Area 29"
- "Authorised Car Share Vehicles Excepted"

## Proposed

- "2P 8:30am-6pm Mon-Fri, Permitted Holders Excepted Area 29"
- "Authorised Car Share Vehicles Excepted"



# Proposal

(ID024) 88 Bays Road, Waverton– Proposed Dedicated Car Share Bay



## Existing



"2P 8:30am-6pm Mon-Fri, Permitted Holders Excepted Area 10"

## Proposed



"2P 8:30am-6pm Mon-Fri, Permitted Holders Excepted Area 10"

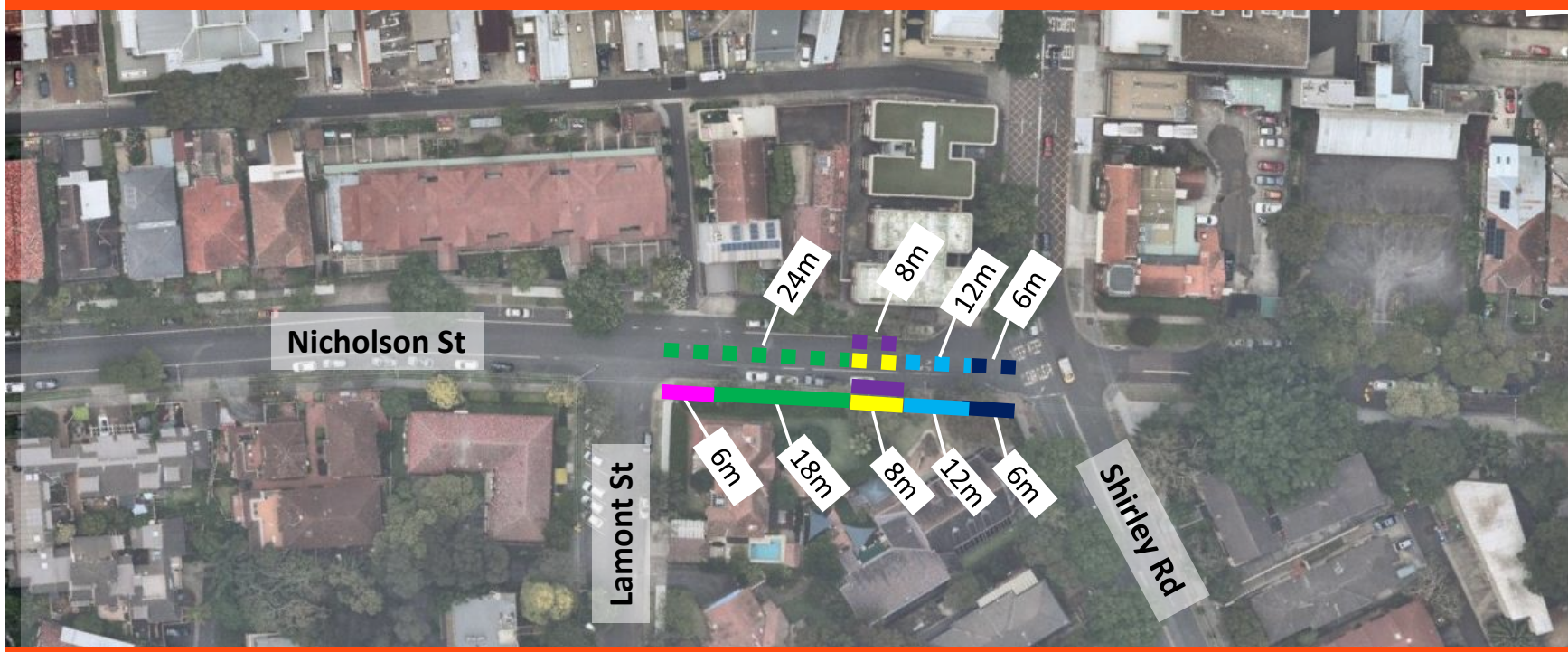


"Authorised Car Share Vehicles Excepted"



# Proposal

(ID021) 2 Nicholson Street, Wollstonecraft– Proposed Dedicated Car Share Bay



### Existing

- ■ ■ ■ "1P 8:30am-10am & 3:30-10pm Mon-Fri, 8:30am-12:30pm Sat. Permitted Holders Excepted Area 13"
- ■ ■ ■ "1P 10am-2:30pm & 3:30-10pm Mon-Fri, 8:30am-12:30pm Sat. Permitted Holders Excepted Area 13"
- ■ ■ ■ "P10 mins"
- ■ ■ ■ "P10 mins 8:30am-10am & 2:30-3:30pm Mon-Fri"
- ■ ■ ■ Disabled Parking

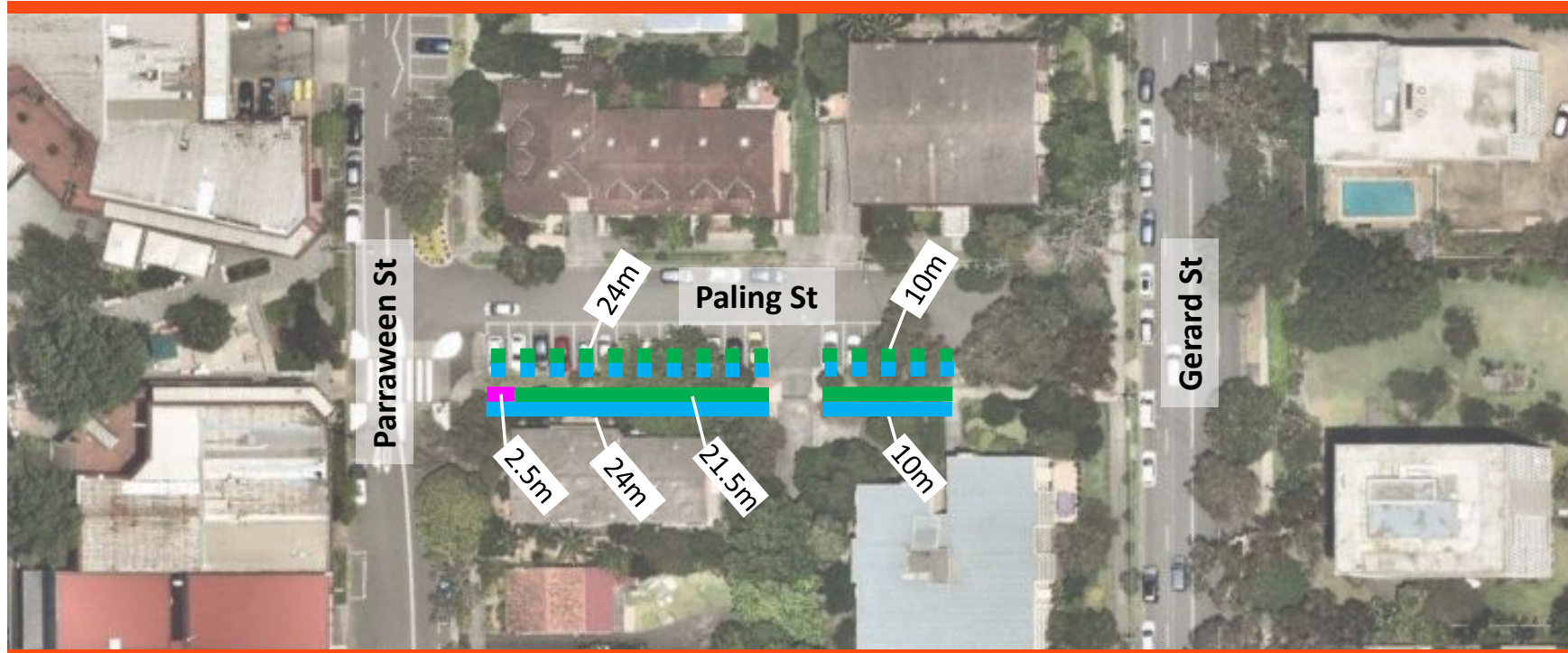
### Proposed

- "1P 8:30am-10am & 3:30-10pm Mon-Fri, 8:30am-12:30pm Sat. Permitted Holders Excepted Area 13"
- "1P 10am-2:30pm & 3:30-10pm Mon-Fri, 8:30am-12:30pm Sat. Permitted Holders Excepted Area 13"
- "P10 mins"
- "P10 mins 8:30am-10am & 2:30-3:30pm Mon-Fri"
- Disabled Parking
- "Authorised Car Share Vehicles Excepted"



# Proposal

(ID016) Paling Street, Cremorne– Proposed Dedicated Car Share Bay



## Existing

- ■ ■ ■ "2P 8:30am-6pm Mon-Fri"
- ■ ■ ■ "90-degree Angle Parking Front Or Rear In, Vehicles Under 6 Metres Only"

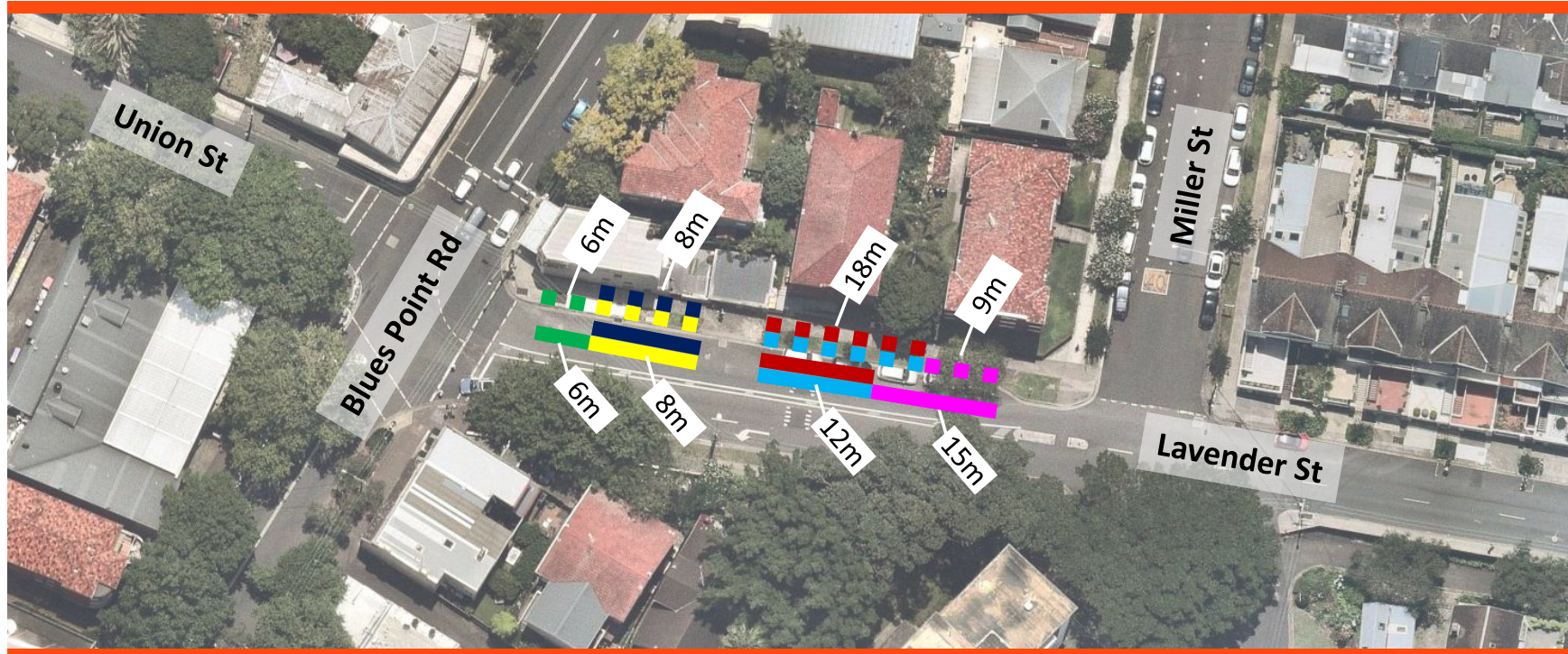
## Proposed

- "2P 8:30am-6pm Mon-Fri"
- "90-degree Angle Parking Front Or Rear In, Vehicles Under 6 Metres Only"
- "Authorised Car Share Vehicles Excepted"



# Proposal

(ID014) Lavender Street, North Sydney– Proposed Dedicated Car Share Bay



## Existing

- ■ ■ ■ "No Parking 7am-8pm Mon-Fri"
- ■ ■ ■ "Loading Zone 8:30am-6pm Mon-Fri"
- ■ ■ ■ "2P 8:30am-6pm Sat-Sun, Permit Holders Excepted Area 6"
- ■ ■ ■ "2P 6pm-Mid Night Mon-Sun, Permit Holders Excepted Area 6"
- ■ ■ ■ "1P 8:30am-6pm Mon-Sun, Permit Holders Excepted Area 6"
- ■ ■ ■ "Authorised Car Share Vehicles Excepted"

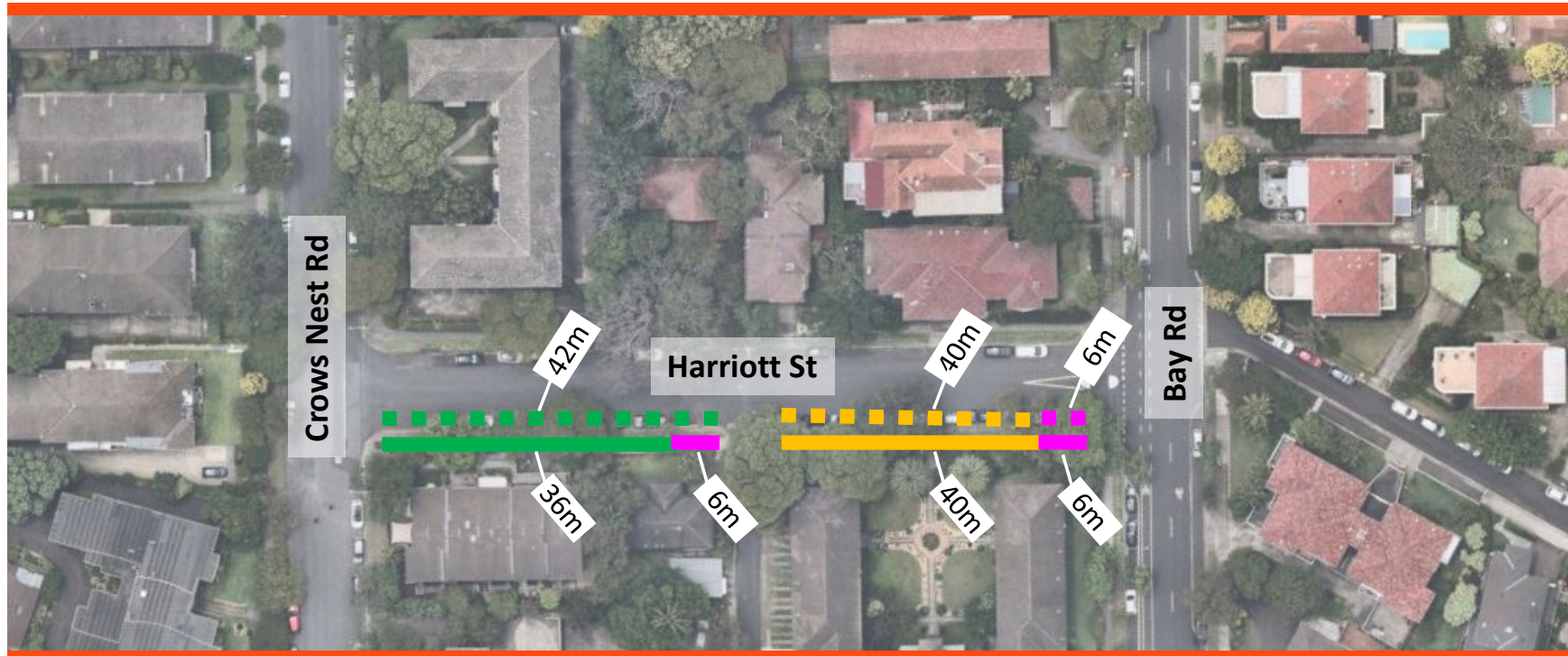
## Proposed

- "No Parking 7am-8pm Mon-Fri"
- "Loading Zone 8:30am-6pm Mon-Fri"
- "2P 8:30am-6pm Sat-Sun, Permit Holders Excepted Area 6"
- "2P 6pm-Mid Night Mon-Sun, Permit Holders Excepted Area 6"
- "1P 8:30am-6pm Mon-Sun, Permit Holders Excepted Area 6"
- "Authorised Car Share Vehicles Excepted"



# Proposal

(ID013) Harriott Street, Waverton– Proposed Dedicated Car Share Bay



### Existing

- ■ ■ ■ "2P 8:30am-6pm Mon-Fri, Permit Holders Excepted Area 10"
- ■ ■ ■ No restrictions
- ■ ■ ■ Authorised Car Share Vehicles Excepted"

### Proposed

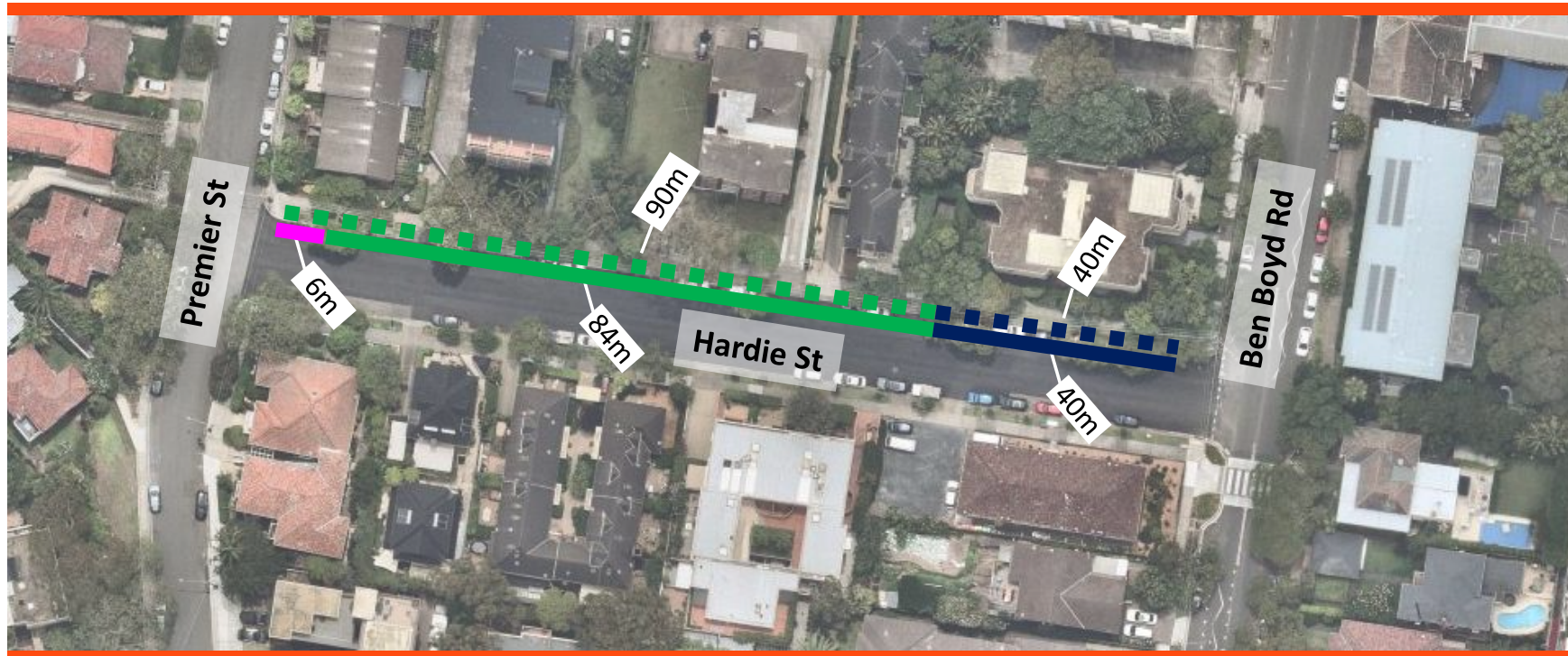
- ■ ■ ■ "2P 8:30am-6pm Mon-Fri, Permit Holders Excepted Area 10"
- ■ ■ ■ No restrictions
- ■ ■ ■ Authorised Car Share Vehicles Excepted"





# Proposal

(ID012) Hardie Street, Neutral Bay– Proposed Dedicated Car Share Bay



## Existing

- ■ ■ ■ "2P 8:30am-6pm Mon-Fri, Permit Holders Excepted Area 29"
- ■ ■ ■ No restrictions

## Proposed

- "2P 8:30am-6pm Mon-Fri, Permit Holders Excepted Area 29"
- No restrictions
- "Authorised Car Share Vehicles Excepted"

## Attachment C: Submissions

Car Share ID	Name	Submission	Sentiment Support /Oppose / Neutral (1 /0 /N)
ID039 Nicholson Street	Name withheld	<p>The proposed share park space is located outside the property own &amp; occupy. I am 100% against this space being allocated to a share car space. The reason is that none of the semis in the row behind this car space have off street parking. We all pay for resident parking &amp; having one less space will have a huge impact. This is THE premium space that the residents of these semis use for unloading shopping, kids &amp; overnight parking as it is right next to the steps as our properties are not at road level. The footpath is a short set of steps down &amp; this space is the closest to those steps. This end of Nicholson St is already in high demand but not for reasons that a share car space will alleviate. There is a very large Fitness First gym with extended open hours till 10pm 7 days/week on the other side of the walk through cul-de-sac &amp; as a result gym patrons park in this end of Nicholson street very regularly but for short stays as they can walk through the reserve (couple of metres wide) into Oxley St &amp; the gym. This gym also has a pool with learn to swim for kids (and adults) and this vital service is used by parents with kids and their own cars. They need to park close by to the gym on a short term basis. These parents with kids &amp; swim gear are not the target market for shared car use. It would better serve the desired outcomes of the shared space to move the space to Hume St or further away from the gym &amp; residents with no off street parking to an alternate nearby location. I would propose the share space be allocated on Hume St between Nicholson St &amp; Pacific Hwy. There is less impact for residents as there are no private house frontages &amp; the units have off street parking. The parking in this area is designated as 2 hour ie less in demand whereas Nicholson St in the proposed car share space is 1 hour parking. The desired outcomes of the car share space can be achieved with lesser impact to your rate paying residents by moving the space to Hume St. It feels like I just paid close to \$100 to park on the street close to the front of my property (when available) only to have one of the very few car spaces available now proposing to be on-sold by the council. In summary this is not the right place for the share space - the same outcome can be achieved with lower impact by relocating to Hume St. Proximity to the new metro &amp; Crows Nest shops will be ideal in Hume St &amp; it is closer to Woolworths supermarket &amp; avoids the uphill walk to the shops.</p>	0
ID039 Nicholson Street	Anthony	<p>I am not against car share - great idea but please move the proposed space to further up Nicholson or on Hume St near the highway. The impact on local residents is too high in the proposed location.</p> <p>In the cul-de-sac in Nicholson St the units &amp; townhouses have off street parking but the all the houses addresses 4 Nicholson St through to 24 Nicholson St have NO parking. These properties are below road level so unable to add driveways. Please do not take away one of the very few available car spaces used by local residents.</p> <p>The gym users also use this space but it is managed by the 1 hour parking limit so there is a reasonable shared use between gym &amp; residents.</p> <p>There are better locations for the share space nearby such as corner of Nicholson &amp; Hume St. Located opposite 27 Hume St would be ideal. It would be better for the car share user as well as it avoids the uphill back to Crows Nest shops &amp; metro (next year).</p> <p>Please consider your residents &amp; relocate nearby to lower impact.</p>	0

ID039 Nicholson Street	Calan	Great idea. Make it two spaces either end of Nicholson sst	1
ID039 Nicholson Street	Nicholas	<p>I am writing in support of the new car share car parking spot proposed for our neighborhood. As a resident of this community, I believe that this new addition will bring many benefits to our area.</p> <p>Car sharing is an increasingly popular alternative to car ownership, and for good reason. It can reduce the number of cars on the road, which in turn can decrease traffic congestion and improve air quality. Additionally, car sharing can be a more affordable and convenient option for individuals who may not want to own a car or only need a vehicle occasionally.</p> <p>The proposed location for the new car share car parking spot is ideal. It is in a central location that is easily accessible for residents and visitors alike. Additionally, the lack of available parking in our neighborhood has been a concern for many years. By adding a car share car parking spot, we can help to alleviate some of the parking issues in our area.</p> <p>I understand that some may have concerns about the impact of a new car share car parking spot on our community. However, I believe that the benefits far outweigh any potential drawbacks. By reducing the number of cars on the road, we can create a safer, more sustainable, and more livable community.</p> <p>I urge the council to approve the application for the new car share car parking spot. Thank you for considering my feedback.</p>	1
ID039 Nicholson Street	Mark	The row of semi-detached housing at this end of Nicholson St do not have off street parking. Parking is already limited; this will add to the problem. A better option would be to consider a site in Hume St (between Nicholson St and Pacific Hwy) or in Oxley St.	0
ID039 Nicholson Street	Joseph	Ive been a local resident for over 10 years, and during this time, access to GoGet has been a lifesaver. Having just a single small vehicle, I often call upon GoGet's larger vehicles and vans to do things like moving furniture, purchasing larger items, etc. I believe broader GoGet Access would alleviate some of the pains of medium to higher density living we have in the area.	1
ID039 Nicholson Street	Ryan	I support this initiative to include more bays for car share in the area. I do not own a car and do frequent using these services when I need them. This will help keep me car free and give me options when I need a vehicle such as a van for moving, SUV for longer trips and smaller cars for short trips.	1
ID039 Nicholson Street	Kate	<p>I am writing to oppose the application for a car share parking space on Nicholson Street, near Lamont Street for the following reasons –</p> <p>There is already a car share parking space one block away on the corner of Nicholson Street and Hume Street. From my observation, this is very rarely used as the car always seems to be parked there.</p> <p>Parking for residents around Nicholson and Lamont Streets and their visitors is already extremely limited due to the close proximity to the restaurants, cafes and shops in Crows Nest. I often see staff from the restaurants and shops parking in these streets and returning to their cars several times a day to check whether they have been booked. They obviously aren't booked very often as they keep parking in the area.</p> <p>My visitors often cannot find parking within a couple of blocks of my apartment on the corner of Nicholson and Lamont Streets, which is extremely frustrating.</p>	0

<p>ID039 Nicholson Street</p>	<p>Alida</p>	<p>I'm writing to express my concern regarding the letter sent to residents about the proposed Car Share Parking at the bottom of Nicholson Street Wollstonecraft. This letter is extremely misleading as the North Sydney council has failed to disclose the fact that there is ALREADY a Car Share Parking space less than 50 metres from the proposed space. This is highly unethical and not the type of behaviour I would have expected from such a council. This is a very dangerous precedent to approve another Car Share Parking in such close proximity to each other. There are other places to ensure fair distribution of these precious car spot in other surrounding street. Perhaps the council should consider converting one of the metered spots on Oxley Street???</p> <p>I am a resident of Nicholson street for close to 20 years and am a rate payer and have paid for parking permits for all that time. We already experience parking issues due to Fitness First clients, workers from the metro building sites and the other business close by. On a day to day basis we find it difficult to find parking spaces that we have paid for and already have lost one to Car Sharing some years ago and the council is considering another revenue generating initiative within the SAME STREET! The other ridiculous aspect of this proposal is that on one hand the council is singing the praises of Car Share and its benefits which encourages the use of motor vehicles and this new Car Share proposal is also less tha 50 metres from the Metro station which is trying to encourage people to NOT EVEN USE CARS!! How ironic that the council would even propose this! I intend to call to discuss.</p> <p>I also note that is sign was put up at the proposed car share spot which once again FAILS to indicate there is already a car share spot just up the road. Totally ridiculous and misleading.</p>	<p>0</p>
---------------------------------------	--------------	---	----------

<p>ID039 Nicholson Street</p>	<p>Name withheld</p>	<p>Nicholson Street Car Share Application (ID039) Rejection. Hello, my name is (name withheld) and I wish to submit my rejection of Nicholson Street Car Share Application (ID039). The reasons for my rejection are as follows, and I wish for my details to remain private and not be disclosed to the applicant of the application. Nor any other. I have lived in the vicinity Of the proposed application for eleven years. I regularly sit in Nicholson Street many times a day watching the passing by of people and traffic. And have done since moving back to Crows Nest in 2011. I have also studied and worked in the Security and Private Investigations fields. So I am very confident of my words in this submission to council. Nicholson Street is used by people as an alternative to parking in any of the local car parks, or on any of the other streets close to the shops. I see people park here every day and have done for years. Then take their shopping bags out and head of to the shops. They do this because there is already limited parking and assumingly don't wish to cross Pacific Highway and get stuck having to drive around the blocks to get back on Shirley Road to go home. Or to park in one of the carparks. They just park here and go do their shopping or visit one of the restaurants or coffee shops. The vehicles regularly stay longer than the time for parking that is allowed. This happens all day, every day. Rain, hail, or shine. The allotted parking time in Nicholson Street is one hour. Yet they regularly never return within this time. This is including those people that work in the area and use the street as somewhere to park whilst they go to work. It is also including the mother's who drop off and pick up their children from Shirley Road Preschool. Many of whom stay there longer than an hour and feel privileged to park there because they are going to child care. They drop off or pick up their children then go to the shops and don't return for hours. There are paid parking spots in front of the Housing Commission units on Nicholson Street that are vacant nearly all day, every day. And it's been like that for years. Spaces that are desperately needed by residents and are left vacant because people don't want to pay for parking. And if you put in the car share spot, then there's another parking space gone for residents. Spaces we desperately need. Personally, I've been recently diagnosed with Multiple Sclerosis and have some mobility issues. In my building there are also elderly residents who need care givers. Then you have those residents of the Housing Commission units that need care givers. And also the patients of the Chiropractor and Dentist. There are far better positions to place a car share spot. Like in a Council owned carpark where the vehicle can be safely located and more fees charged. Or on Willoughby Road or Alexander Street where access is more amenable to car share. I reject the application of the Nicholson Street Car Share Application (ID039) on the above grounds.</p>	<p>0</p>
---------------------------------------	--------------------------	---	----------

ID038 Albany Street	Clement	<p>As a local business owner I oppose this proposed location for car share company to occupy this space.</p> <p>Reason 1: Heavy traffic flow around this location, people who use car share may take a lot longer standing at a busy street getting into or lock up the car for admin purpose also driving in and out parking because they are not familiar with the car and cause disruption of traffic flow.</p> <p>Reason 2: It is opposite the Pharmacy where patient have been complaining that they can't get parking for a quick stop to pick up their urgent medication. eg. COVID antiviral. Parking limit should be at P15.</p> <p>Reason 3: It is outside ATM &amp; Comm bank. Security bank truck need parking to stop to pick up &amp; drop off cash etc... Bank customer may need to park quickly to get cash or deposit money via ATM.</p> <p>Reason 4: It is nearby driveway, opposite is Zig Zag Lane where cars can be waiting to turn thus lots of cars turning and pedestrian crossing again people who use car share may not familiar with the car and may cause some safety issues.</p> <p>Reason 5: There are a lot more parking space further down in the back street area where there are less traffic and pedestrian around will be a lot safer, where they can take their time.</p> <p>Reason 6: Not need train station where the car share customer can connect with public transport.</p>	0
ID038 Albany Street		The area is struggled with parking already, don't want it to get worse	0
ID038 Albany Street	Beatriz	We are a family and use car share. This spot will greatly benefit us considering how popular is the one already located there. We have a baby and prefer to use car randomly	1
ID038 Albany Street	Brigitte	I am in favour of the submission	1
ID038 Albany Street	Henryk	Payments by car share companies for these spaces should reduce the cost of parking permits	N/A
ID038 Albany Street	Name withheld	I do not approve of the proposed car share parking. Parking in crows nest is already limited and with all the additional construction going on will only get worse. Parking should be reserved for residents with cars and their guests. Adding an additional car share parking will only place more strain on locals.	0
ID038 Albany Street	Name withheld	<p>Car share is a wonderful option for households to avoid owning a second car and the hassle of finding off street parking. I have lived in Ernest at and Aitchison st and now Albany st and been a regular user of Go Get. I can confirm there are less car share spaces on the eastern side of Willoughby Rd.</p> <p>I therefore strongly support the application for a car share space on Albany street. There should be more. Crows best will soon have two train stations along with the many bus options giving residents multiple public transport options.</p>	1
ID038 Albany Street	Tanya	<p>I'm writing in regards to the ride share proposal for Albany St.</p> <p>The ride share is placed in a very popular car spot for child care drop off and the bank.</p> <p>It would be great if it was a little further down the road, past the truck entry to Coles.</p>	1
ID036 Water Road	James	Removes parking flexibility options for residents on waters road. This takes away limited spaces remaining for residents for spots that do not have restrictions limiting their use on waters road. For example, there are large number of spots restricted to 5 minute parking school days or for reserved for emergency vehicles. This would remove limited spaces remaining.	0

ID036 Water Road	Jean	I object. I use this spot regularly when bringing my father over as it he has limited mobility and is the closet space to my home. There are very few spots available on waters road and this would prevent this space being used for non share car user.	0
ID036 Water Road	Yee	I am against this proposal. This proposal further restricts parking options for residents on waters road. I often prefer to use this spot as many other spots have additional restrictions which are not suitable for me.	0
ID036 Water Road	Elaine	I do not approve. Add additional restrictions to parking on waters road.	0
ID036 Water Road	Richard	This should not be approved as it it takes away parking options for waters road. Share cars are not suitable for all people and this takes way a spot that could otherwise be available to residents.	0
ID036 Water Road	Peter	I object	0
ID036 Water Road	Andy	We are long standing residents of Waters Rd. While we understand that Car sharing has some benefits, taking space that is already limited from residents is wrong. There is already a Car sharing space in the Woolworths car park next to Tebroc Hairdressers. It would make more sense to simply add another spot next to this one which is more central to the main road etc.	0
ID036 Water Road	Name withheld	I disagree with the application of a car share parking. The location is a residential area and the parking spots are already quite limited on this road. It will be difficult for visitors or residents to find a parking spot when needed.	0
ID036 Water Road	David	I do not agree with taking away one free car space for the local residents, local businesses and families collecting their children from the school opposite in favour of a car share company who will be making money out of this venture. Removing a space will also cause further traffic congestion by driver's who are forced to "traffic cruise" to find an alternate parking space in this already congested area. There is a car share space only 100m away from this location in Waters Lane just off Waters Road near Woolworths.	0
ID036 Water Road	Helen	I do not support the addition of a car share space on Waters Road. I use this service occasionally and there are plenty of local options in the area on less busy roads. Waters Road is very busy, especially around school drop off and pick up times. I have a garage and drop curb onto Waters Road and my access is often blocked for short periods of time because of the lack of parking spaces available on Waters Road, exasperated by the local construction currently ongoing. This will only get worse with the proposed car share space, therefore I object on the basis that this will be a detrimental change for local residents and traffic management.	0
ID036 Water Road	Alison	We live at (Address withheld) and would like to give our full support to a new car share parking space in this location. As regular users of the Go Get car share scheme we would be very keen to see a space close by and so convenient. There are numerous parking spaces on this road so I do not believe the loss of one will be detrimental to private car users. The road is busy with parking at school drop off and pick up times but I would hope this is NOT taken into consideration at the expense of local residents who use car sharing and therefore provide benefits to all road users.	1
ID036 Water Road	Janet	Fantastic- need more	1

IDO36 Water Road	Ken	Support	1
IDO36 Water Road	Emanda	I would love to have a spot reserved for car share - it will make owning a vehicle less necessary and there are a lot of people in the immediate vicinity that would benefit and it is close to public transport options also.	1
IDO36 Water Road	Justina	Great idea, we should have more of these car share facilities in our community	1
IDO36 Water Road	John	Dear sir, Further to your email dated 20/4/2023 requesting feedback on the above parking proposal, I can confirm that my wife and I strongly support the proposal, given demand for on-road parking will likely increase significantly into the foreseeable future. We would however, appreciate feedback on just how the share ride system will operate if approved. Acknowledgement of receipt of our email would be appreciated.	1



<p>ID036 Water Road</p>	<p>Nadine</p>	<p>I am writing to express my strongest objection to the proposed removal of street parking from Waters Road Neutral Bay for "car share" to enrich the car share companies at the expense of ratepayers.</p> <p>Street parking is not an asset for the Council to dispose of at its whim to vested interests, to satisfy the neuroses of anti-car activists and fanatics within and outside the Council, ignoring the requirements of the thousands of us who actually pay the rates.</p> <p>Street parking is part of the collective assets of the community.</p> <p>There is already a care share spot in Grosvenor Lane, for which no-one was consulted and which delivers no net benefit to the community.</p> <p>To the Council's statements in the flyer:</p> <ol style="list-style-type: none"> <li>1. "Council is committed to balancing car share parking with the parking needs of the community". "Balancing"? Why? The community has never requested nor approved this policy approach. The community wants only to be able to park their cars and those of visitors with ease. The only people who seek car share facilitation are the car share companies, which are very obviously duchessing council employees to force through this ugly, unwanted policy against the will of ratepayers.</li> <li>2. There are no "Benefits to the community" of reducing car ownership, unless the community overwhelmingly supports that premise. The community does not, nor does the Council have any evidence to the contrary. Simply because a tiny number of Green-Left activists and car share entrepreneurs have been in your ear about such issues, does not reflect the values of the whole community.</li> <li>3. People "who don't own or can't own their own car", have multiple options with easy and plentiful Taxi and Uber access, and the busiest bus route system in Sydney.</li> <li>4. How dare the Council propose this with only one argument "The benefits of care share" without also addressing the disadvantages of car share. As a Council you are meant to represent all points of view, and we as ratepayers deeply resent being coerced and gaslighted by the Council, whose wages and expenses we pay from our own pockets.</li> </ol> <p>I speak for many of my neighbours in the building in which I live, who are appalled to see this creeping, undesired intrusion upon our local amenity.</p> <p>For such an ugly, unwanted proposal to land in our letterboxes makes it very obvious where this initiative has originated, from car share companies.</p> <p>If this proposal proceeds, we will be writing to the ICAC to request immediate investigation into the personal finances of those involved in this appalling infringement upon ratepayers' rights. That would uncover what inducements could have been made to get such a wretched, inappropriate proposal onto the official agenda.</p> <p>It must be rejected.</p> <p>If it isn't, those responsible can anticipate their coming years dealing with an investigation process.</p>	<p>0</p>
<p>ID036 Water Road</p>	<p>Dick</p>	<p>I fully support the proposal to provide a car share parking space at the corner of Waters Rd outside #32. If the proposal is accepted I'd be tempted to make use of the share car when next my own car rego &amp; insurance comes around.</p>	<p>1</p>

ID035 Edward Street	Rebecca	The location of this current carspace allows visitors to residents, the surrounding schools, university and Mary MacKillop chapel 2 hours of free parking during the week. By making this a car share space you are denying a large group of people access to parking for a small minority who choose to use car share. I note that the Council isn't giving up one of the metered parking spaces and see this as an exercise in revenue raising. You need to be transparent as to the revenue raised from these schemes and the usage rates of car share in North Sydney. From our household the vote is a resounding No	0
ID035 Edward Street	Sara	We are support the new car share space on Edward Street. We are frequent users of a car sharing scheme and would welcome an additional option in the area because cars are often unavailable (booked out). The reason we do not have a car is because we have access to car sharing and public transport options. These schemes are great - they reduce costs, traffic (if you have a car you tend to use it more) and parking congestion and are more environmentally friendly compared to every household having a car.	1
ID035 Edward Street	Joerg	We are immediate neighbours of the proposed pod and already use a car sharing scheme. Nearby cars are often booked at popular times more options would be very welcome. We don't currently own a car but are considering buying one - an additional car share option may prevent us from having to do so. So strong support from us.	1
ID035 Edward Street	Troy	Support the addition of a share parking spot here.	1

<p>ID035 Edward Street</p>	<p>Steve</p>	<p>I am the owner/occupier of (address withheld) and have the following concerns in regard to allocating one of the current car spaces outside of our home to a scheme member. They are as follows:            1) The shortage of car parking spaces in the vicinity of our home will only increase by allocating one of the current car spaces to a scheme member. Our household currently has 2 cars (required for our work). However, I often find it challenging to gain a car parking spot in the vicinity of our home due to the adjacent school and tradespeople utilising the car spaces. The adjacent school (Shore) uses both Edward and Lord St as a thoroughfare and parking zone for daily pick up and drop offs for their children. There are also frequent after hours school events, meetings and sports on weekends where the residents of Lord St in particular, find it difficult to find a parking spot for their own vehicle for which they pay the full annual parking fee. This sentiment is shared by our neighbours. As a household, the car share is not an option, and of no benefit to us. Hence, this does not reduce the pressure on parking for the residents of our household as proposed in your letter. I believe this will not reduce traffic congestion caused by drivers cruising to find a park. In fact, this will only perpetuate the problem in an already congested area, as we lose a parking space to a Car Share scheme member.            Perhaps a solution may be to move the proposed Car Share Parking spot elsewhere. may we suggest Mount St outside of the school, or further up on Edward St outside the Catholic university, where the residents and owners of property in North Sydney will not feel that it is directly impacting their ability to park close to their own property (should they not have a car space Oof their own). Perhaps there should be a survey to find which community members are likely to sign up to the Car Share option, and place the car where it will provide the greatest benefit to the residents who will actually utilise the service.            2) Reduction of a free timed car space, penalises our visitors from using this space when parking permits are not available. As busy full time working professional parents with long working hours, we require full time care for our children. Given we are only allocated a limited amount of parking permits a year, our carers or visiting family must incur the additional cost of parking when the permits run out if there is not free space. This is a large expense when full time care is required. We believe that allocating one of the free car spaces to a scheme member, will only place our household and visitors at a greater disadvantage.            3) Car Share schemes for petrol cars, does not seem like a sustainable idea for parking. A suggestion would be to promote electric vehicle charging stations for electrically powered cars that may offer the option of car share.</p>	<p>0</p>
<p>ID035 Edward Street</p>	<p>Andy</p>	<p>I have no objection to the proposed car share parking space on Edward Street.            However this is not the major traffic problem on Edward and Mount Streets.            The stream of anxious parents dropping off and collecting their children from the Shore Junior school in Edward Street causes frequent traffic jams on both Edward and Mount. It would be difficult for emergency vehicles to gain access to this area at these times.            There are often 2 or 3 or even 4 coaches parked on Mount Street dropping off or collecting students from Shore Senior School. They stand for long periods with their engines running which causes both air and noise pollution - not to mention the contribution to global warming.            Appeals to the council and the NSW government have achieved nothing to date. Please address this issue urgently.</p>	<p>N/A</p>

IDO28 High View Avenue	Amelia	I oppose as there are a very large amount of apartments in Highview Ave and surrounding streets making parking difficult to come by at all hours. There are also a large number of commuters who park to catch buses who take up parking spaces during the working day. When there are events at Neutral Bay Public School, it is impossible to find a parking space. The taking away of a parking spot would be highly detrimental to all residents of Highview Ave and their visitors. Please consider placing a car share on Premier Street and/or Montpellier Street instead as there are many less apartments and much more housing, as I can appreciate and support the environmental advantages of car share.	0
IDO28 High View Avenue	Name withheld	NO to car share in Highview avenue as residents are already struggling to park without taking another car spot away to be used by randomly under a car share scheme	0
IDO28 High View Avenue	Claudia	Please choose a different location for car sharing. HighView Ave doesn't have enough parking for its residents. That location is crucial for disabled residents and families with young kids who need to go up and down the stairs as the majority of buildings don't have an elevator and street parking is safer. Suggest other locations such as Ben Boyd road, Lindsay street, Premier street.	0
IDO28 High View Avenue	Derek	Agree car share is a good thing as long as it takes a restricted car space not an open one.	1
IDO28 High View Avenue	Lia	While I appreciate what Council is trying to do, I find it hard to understand that Council is reducing the amount of car spaces required in new buildings and then having the cars park on the streets! New units need to have adequate parking - yes people still have cars. I visit friends in the Highview Street area, and finding parking is already difficult. Please give car owners a fair go - treat all car owners the same and let us all find suitable parking - NO FAVOURITISM!!!	0
IDO28 High View Avenue	Lynette	Submission 1. Profusely object there is little space for residents in the street and as a council rates power I do not want any more traffic here. Submission 2. I don't support this application. Residents and visitors need parking on HighView avenue. We have many disabled people who desperately need parking on this street that is densely populated. A car sharing dedicated spot will make parking much more inconvenient. Please do not approve this request. Thank you	0
IDO28 High View Avenue	Name withheld	I oppose the proposal for Car Share parking on Highview Avenue Neutral Bay. Local residents already experience parking stress due to more people moving into the area without off street parking available. To take away even one car space for the exclusive use of a Car Share company would be highly unfair to the local residents and their visitors. Everyone is entitled to on street parking without restrictions. In addition, a new residential building will be constructed near by, introducing more residents and visitors into this area. DA 86/22. Therefore every single on street car space on Highview Ave is needed.	0

IDO28 High View Avenue	Jane	Regarding Highview Avenue, Neutral Bay car share application. I DO NOT SUPPORT the proposed car share application. There is not enough permanent parking now. Two residences (12 and 24 Premier St) have applied to Council to erect off street parking and Council has repeatedly refused which is just ridiculous. People drive from other areas in park in Premier St and surrounding streets to access the ferry and go to work in North Sydney. There has been constant construction in Premier St since around 2016 and there is more planned and approved for Premier St and Ben Boyd Road. Tradies park in the allotted 2hr spaces and don't move their vehicles.	0
IDO28 High View Avenue	James	I do not think our area needs another space allocated to car share parking. There are already 2 spaces allocated in Ben Boyd Rd. about 120 metres from your proposed site in Highview Ave. The area is heavily parked out each day by owners, tenants and general public and we do not want a reduction of available parking.	0
IDO28 High View Avenue	Judie	Not endorsing this as HighView Avenue is a very small street and densely populated. There's no enough car spaces on the street for residents and visitors and a shared car space will make it even more difficult. Many Buildings on HighView Ave don't have elevator and street parking is essential to carry goods in and out. Car sharing should be allocated in major streets nearby, including Lindsay street or Ben Boyd road.	0
IDO28 High View Avenue	Alex	Please don't go ahead with the approval of this application. The proposed car sharing spot is just in front of 2 small building block with no elevator. Residents with kids or with impairments need that spot for safety and security when accessing the premises. That spot is also used from lots of trades who service the buildings on HighView ave. Main streets such as ben Boyd road would be more appropriate for car sharing.	0
IDO28 High View Avenue	Lisa	I support the proposed car share parking space in Highview Avenue Neutral Bay.	1
IDO28 High View Avenue	Lynne	I have a great deal of concern about this site being considered by council. Highview already takes overflow traffic from parents to: neutral bay public school which is crazy before and after school , also after recent excessive development in Premier st , we have ever growing overflow from residents , trades and bistro that street , coming into Highview . Please see reason this location is ridiculous	0
IDO28 High View Avenue	Rose	I don't agree with car sharing there. We visit often our relatives with disabilities and there's no enough parking already. Please pick another spot on other streets nearby.	0
IDO28 High View Avenue	Michael	There is an apparent high ownership of vehicles in the street and consequently removing ONE car spot will add to the difficulty in parking.	0
IDO28 High View Avenue	Mahesh	The car share place is right in front of our apartment and impinges on our rights to the use the apartment for our needs. It is the logical place for our visitors and tradesmen to park. To use it as a restricted parking place is inappropriate. This will also impact on the value of the apartment and its saleability. A more appropriate space near the apartment will be more logical than this spot.	0

IDO28 High View Avenue	Anthony	I don't endorse this. HighView Ave is not the right street for car sharing which would be best placed on bigger streets	0
IDO28 High View Avenue	Paul	I don't want the car share parking space as this streets has already limited parking. Perhaps a car share parking space on Ben Boyd road should be considered	0
IDO28 High View Avenue	Roxana	I don't think that HighView ave is suitable for car sharing. Please don't proceed with approval	0
IDO28 High View Avenue	Sebastian	I do not agree with the proposal to add a car share space on high view ave. Parking is scarce for residents in this area at the best of times and current amount of parking space should be maintained. Furthermore, there is already a car share space about 110m away from the proposed location on Ben Boyd Rd near Lindsay st.	0
IDO28 High View Avenue	shalhevet	No. The street is busy with residents and every parking spot is significant .	0
IDO28 High View Avenue	Steve	The current parking in highview ave is extremely limited and we take all the excess from premier st developments. All the mums parking in the street to pick up there children from neutral bay public school. Better location would on Ben Boyd Rd itself Even the cnr of Ben Boyd and highview, Ben Boyd and undercliff, Raymond rd would be a better location as well. Highview in that suggested spot doesn't make sense at all	0
IDO28 High View Avenue	Steve	High View Avenue has limited parking spots for visitors and residents. Suggest Ben Boyd Road as a more suitable street which could result being more convenient for the residents of the area.	0
IDO28 High View Avenue	Troy	I oppose as there are all ready too many apartment blocks without enough off-street parking, causing an excess of parked cars throughout the day and especially of an evening. There are also a number of cars parked in the area for commuters catching public transport to work	0
IDO28 High View Avenue	Dougal	I would like to make a suggestion that a car space be kept available for emergency vehicles.	N/A
IDO28 High View Avenue	Yaron	Would like to oppose the car sharing spot in highview ave There are very few available slots as is, and we constantly have guests coming over circling around for 10 min looking for q spot.	0
IDO28 High View Avenue	Frances	In reference to your letter of 20 April regarding a parking space for a Car Share company in Fairview Ave, corner of Lindsay Street, I would like to suggest that the reserved space might be moved further along Fairview Ave to the far / southern side of the driveways used by residents of 3 Lindsay Street. Your proposed space is at the pedestrian access of 3 Lindsay Street and as such is used by our visitors, delivery persons, and occasionally, ambulance and community nurses. The suggested space would not cause the inconvenience of losing the use of the space at our pedestrian access.	N/A

IDO26 Phillips Street	Name withheld	I currently utilise the car share located on the corner of Phillips Street and Ben Boyd Road provided by GoGet. Based on the picture, it appears that this is the location of the application for the car share. It is unclear if this is an application to simply change the service provider of the car share company (GoGet) or if it is an application for an additional car share service directly opposite the current car share. If it is a change of provider, I oppose any change in care share provider as there are membership fees paid upfront and then monthly to the current GoGet provider, and any change may cause more cost to residents currently utilising the GoGet ride share service in this location. If it is an additional ride share for this location, I strongly object as the current car share is underutilised and an additional car share allocation will take up premium parking required for residents and deliveries made in the area.	0
IDO26 Phillips Street	Beatriz	I use the car share already parked there and is popular, which hardens its use. Car share here will benefit us significantly as a family of 3	1
IDO26 Phillips Street	Bob	There is already a car share spot there. Why does there need to be 2nd spot on the same st? Recently council got rid of 1 spot already on Phillips st to allow buses to turn. Council have been unable to stop boats parking on Phillips st for months at a time further limiting parking. Due to building works on spurson st 2 spots are now unavailable Please choose a different location.	0
IDO26 Phillips Street	Name withheld	At present, there is not adequate parking available here for the residents - it is very common to see cars parked in each and every slot of public parking available. In addition, the pressure of the nearby construction projects has only exacerbated this issue, with spaces either blocked off for civil engineering vehicles, or occupied by the workers who are here on a daily basis from elsewhere in the city. In addition, there have been innumerable occasions where delivery/ car-share drivers have not only blocked entrances to premises by parking illegally, I have also had to suffer the ignominy of unknown person(s) damaging my legally parked vehicle under-cover on-premises (this has been recorded duly with the Police). Given that this issue is not being addressed from a residents' perspective (hire-cars can be parked anywhere without needing a special parking slot - it only requires a paper permit to be displayed!), reducing the already-low number of public parking slots does not make any sense.	0
IDO26 Phillips Street	Ella	I think the car sharing is a great idea. Would like more public EV charging available.	1

<p>IDO26 Phillips Street</p>	<p>Eugene</p>	<p>Should not go ahead.                  There already is a car share spot on Phillips st in the exact spot council is proposing.                  We have the least amount of off street parking as it is. I live between (address withheld) meaning I live in one of the houses without offsteet parking. We already struggle to get a park and often have to park on spruson.                  None of the three houses from Phillips lane to Ben Boyd have off street parking.                  Furthermore the council, for very little reason authorized a large development on spruson and Phillips (replacing 2 bedroom apartments with 3 but only circa 1 spots per apartment in the building) which will result in more parking issues and currently, while the development is happening, an entire work zone was given to the developer further impacting our parking for the next year or two (development still in its demolishing stage).                  If there is to be a car share spot in this area, put it on Ben Boyd or spruson, where everyone has off street parking or put it on the other side of Phillips (ie the other side of Ben Boyd) where everyone had off street parking. Don't put it on the street opposite tue three houses with no off street parking - two of which have young families with 2 children and one that had an elderly couple and their adult son who cares for them.                  The large apartment block on Phillips street only has one carpark per apartment and each apartment had 1 - 2 bedrooms meaning that it's perfectly feasible that each apartment has 1-4 adults, all of whom have cars and rely on the unlimited parking on Phillips and spruson street. Having a car share spot here will negatively impact these people. Having a car share spot in a limited parking spot like Ben Boyd, will not adversely impact these people.                  I further want to reiterate that this proposal seems somewhat ridiculous based on the fact that the picture points to almost the exact spot where there is already a car share spot. Did the council overlook this or is this proposal a proposal to renew that existing car share spot? If not, is the council seriously proposing to have 2 car share spots on Phillips st right next to each other.                  I Hope the council visit Phillips Street on a weekday evening to see just how parked out it already is. Please don't make it worse</p>	<p>0</p>
<p>IDO26 Phillips Street</p>	<p>Helen</p>	<p>Consideration should be given to the increasing limited availability of street parking on this short section of Phillips St. We bought Unit here in 1997 and at the time were unable to afford unit with garage. In the meantime we have paid not insignificant Council Rates. Current on street parking is limited by bus stop, Go Get car space, as well as a dedicated disabled park spot. Further limitations have been 2 hour parking and changes to parking on Spruson St. People have left abusive notes on our car if they perceive 'a pig park' - always due to subsequent movement of other cars. As an older woman I don't feel safe having to park further away at night. Getting grandchildren into and out of car seats further away is not ideal. I am not opposed to car sharing per se but really consider that Phillips St has enough limitations already.</p>	<p>0</p>
<p>IDO26 Phillips Street</p>	<p>Karen</p>	<p>I think this is a good idea as a lot of people in the area are renting and need a car for occasional use. If they purchase their own often they dont have access to offstreet parking and have to.park a distance from their home. It is already very crowded with people who live in the area and have two or three cars and have not considered where they are going to.put them as well as people who use their garages for storage and park their cars on the street</p>	<p>1</p>



ID026 Phillips Street	Matt	Given the parking situation on this section of Phillips Street is already very challenging and likely to get worse with a large townhouse development on Spurson St under construction, removing another on-street parking spot is the last thing we need. The owners/occupiers of (address withheld) rely heavily on easy and convenient access to on-street parking. There are currently approx 12 spots available on this section of the street and to take away another one for car sharing would be to the detriment of many residents. It would be preferable if other options were explored for the new car share space including along Ben Boyd Road.	0
ID026 Phillips Street	Sameera	There are endless number of car share parking spots already available in the area. The public transport is one of the best anywhere in Sydney. There is no need for any more car share parking spots around Phillips Street.	0
ID026 Phillips Street	Chris	<p>In response to the above car share application. I would like to draw your attention to the already limited parking for residents without a dedicated garage/car port/space within their own property boundaries much like ours at (address withheld).</p> <p>I notice in the letter it is mentioned this application is to reduce pressure on parking. At the moment the lower half of Ben Boyd road is the only section of road within at least a kilometer that has NO time restrictions on parking during the week. Time limits, consistent with the rest of the area, would do a lot more to ease the pressure on parking for local council residents than losing another space to a car share company.</p> <p>'Free' parking on the lower part of Ben Boyd Road has made it a destination for many people outside of the local council to park here all day, everyday.</p> <p>Every morning, people drive to this part of Ben Boyd Road, park their cars before work and either board the bus at the Philips Street/Ben Boyd Road junction as it's one of the final stops before the city, or walk down to the Neutral Bay ferry stop. We have even seen people park, unload suitcases, and jump into car ride services (ie Uber) and leave their cars for 1-2 weeks, presumably as they are away and it's a safe area.</p> <p>There is the additional issue of local residents who do have private parking spaces on their properties but park on Ben Boyd Road as they are either part of a multi car household, or have additional business vehicles (mainly trades) which they don't use all the time.</p> <p>All of these circumstances create the issue of limited parking for local residences.</p> <p>Having a restricted time limit for parking, much like the rest of the area, would EASILY solve the pressure of parking for local residents much more than an additional car-share space. In fact, as there are no parking restrictions, car-share company cars are freely able to park on this stretch of Ben Boyd Road lawfully anyway. As you can see from the attached image, this GO Get has been sitting on Ben Boyd Road for the last 2 weeks in a residential spot rather than a dedicated car share space.</p> <p>I understand much of this may all seem trivial, however as local homeowners, with one car and a young family comprising of a 2 year old toddler and a 10 week old baby with no garage/parking space on our property, we need to use street parking and, on occasion, my wife has needed to park a kilometer away with the children on board as there is no local street parking available. This is a consistent topic of conversation for many families on this lower stretch of Ben Boyd Road in a similar situation.</p>	0

IDO26 Phillips Street	Christine	<p>Further to your letter dated 20 April 2023 I strongly object to the proposed car share space in Phillips Street.</p> <ol style="list-style-type: none"> <li>1. There is already one in Phillips Street. We don't need another one.</li> <li>2. There is a very limited number of parking spaces which should be available for family friends and other people, including tradesmen.</li> <li>3. The street is very narrow and does not need another permanently parked car. Also when the car is used no one else can use the spot.</li> <li>4. Philips street is too small for car share.</li> </ol> <p>I am sure you could find a better spot on Ben Boyd Road.</p>	0
IDO26 Phillips Street	John	<p>As a unit owner without a parking space I am Strongly OPPOSED to an additional car space being provided to a car share provider in Phillips St. At the moment it is already extremely difficult to find parking in the street. There is a disabled parking space, a designated car share space and the removal of parking at the end of the street. Parking is already severely limited.</p> <p>In addition new units are being built which will further add stress on parking to an already difficult parking situation. You can be assured that if you try to find a park after 7 pm you will be in for a walk.</p> <p>Please don't approve this additional car space.</p>	0
IDO26 Phillips Street	Christine	<p>Petition:          PROPOSED CAR SHARE PARKING - Council Circular dated 20*'' April 2023          Petitioner: Christine (last name withheld)          (mobile withheld)</p> <p>We the undersigned residents of Phillips and Spruson Streets. Neutral Bay submit the following petition voicing our objection to North Sydney Council's proposal to instal a second dedicated car share parking space in Phillips St. (as outlined in the council's circular dated 20*'' April 2023), for the following reasons:</p> <p>Since 2000, there has been a gradual removal of unrestricted parking in both Phillips and Spruson Streets and Phillips Lane and a reduction in parking spaces available to residents as follows;</p> <ul style="list-style-type: none"> <li>• 2-hour parking restrictions introduced in Phillips and Spruson Sts., two 4-hours in Phillips Lane</li> <li>• a reduction in spaces available due to street signage installed by the RTA further from street corners than is the requirement.*</li> <li>• a dedicated 'disabled parking' spots allocated to each of Phillips St and Phillips Lane, (of necessity).</li> <li>• a dedicated 'Go Get' hire car spot allocated by council to Phillips St., (not necessary)</li> <li>• removal of at least seven parking spaces at the intersection of Spruson and Phillips Sts. to allow for busses turning in and out of these streets (263 bus route - of necessity).</li> <li>• a 'no parking' sign installed in Phillips Lane, 21 metres from the corner of Phillips St. (more than the required distance), which effectively removes yet another parking spot.</li> </ul> <p>Phillips Street has five residences on the Northern side, 3 of which have no off-street parking. Occupants of these are either young families requiring nearby parking to load and unload young children, shopping, prams etc. or older residents who rely on outside services which require parking nearby.</p> <p>The residents of two three-story unit blocks on the Eastern side of Phillips St. and two unit blocks fronting Ben Boyd Rd. and backing onto Phillips Lane compete for parking spaces in the immediate area.</p>	0

		<p>Parking on Phillips and Spruson Sts. Is further impacted by the trucks and commercial traffic associated with the building of multi-storey apartments at the intersection of these streets. This construction is expected to take up to two years to complete.</p> <p>To be clear there is no issues with those in need having dedicated disabled parking or to making bus access to the streets easier. The objection is to what seems to be the random removal of street parking without consideration of what might be done to compensate the loss of space for residents, such as moving signage to acceptable limits so as to create more space or maybe relocating the existing 'Go Get' vehicle space to a main street in the same area such as Ben Boyd Road. Now council is considering inflicting yet another car share space on this small, densely populated area. Should the proposal go ahead, this will result in more restricted parking signage being installed and removal of more parking spaces.</p> <p>Thank you for reading our submission. We ask that council will give consideration to supporting the needs of residents and rate-payers over those of a commercial business operator by locating the car-share spot in a less densely occupied location where such a spot does not already exist.</p> <p>Signed:          Richard (last name withheld) – (address withheld)          Stephanie (last name withheld) – (address withheld)          Eugene (last name withheld) – (address withheld)          Lisa (last name withheld) (address withheld)          Robyn (last name withheld) (address withheld)          Susan (last name withheld) (address withheld)          Val (last name withheld) (address withheld)          Jann (last name withheld) – (address withheld)          Linsa (last name withheld) (address withheld)          Christine (last name withheld) (address withheld)</p>	
ID025 Premier Street	Cha-May	<p>There is little enough access to parking some days and to give more up for a commercial venture I do not believe benefits the area - what will they offer in return - if local residents got a discount on the car share there but there is no resident benefit otherwise</p> <p>There is limited benefit to the residents for them to give up a parking spot when there are often not enough. This is a commercial venture that need to show need it to the residents not the company</p>	0
ID025 Premier Street	Onder	<p>There is too many shared service car spots available on yeo street and as far as I observe they are not much in use. Usually vehicles sits on the spots all the time.</p>	0
ID025 Premier Street	Rosemary	<p>See attached (no attachment)</p>	N/A

ID025 Premier Street	Ian	I strongly object to using this location for profit making car share operations in this location. I live in Premier St 50 metres south of the proposed location and present parking is a nightmare with commuters leaving cars all day. As a pensioner I pay Council \$70 per annum for a resident parking permit and have 2 hour parking limit signs outside my house. This is totally disregarded by commuters and Council Rangers do not police the street and act against offenders which I would expect them to do. Please respect the rights of long time residents in the area in question and reject this proposal	0
ID025 Premier Street	Gwenda	This proposed location for paid car share is strongly opposed by me. The site on the corner of Hardy Street is directly opposite my residence in Premier St and is a spot that I am often forced to park in due to lack of parking closer to my home, this, despite the fact that we pay for a Council Parking permit and there is a 2 hour parking limit on our side of Premier Street which is totally ignored by city commuters who park all day protected by the fact that there is no policing by Council Rangers. Look after your residents not traffic offenders please.	0
ID025 Premier Street	Jane	Regarding Premier Street, Neutral Bay car share application. I am TOTALLY AGAINST the proposed car share application. There is not enough permanent parking now. Two residences (12 and 24 Premier St) have applied to Council to erect off street parking and Council has repeatedly refused which is just ridiculous. People drive from other areas in park in Premier St and surrounding streets to access the ferry and go to work in North Sydney. There has been constant construction in Premier St since around 2016 and there is more planned and approved. Tradies park in the allotted 2hr spaces and don't move their vehicles.	0
ID025 Premier Street	Charlene	I am writing to express my strong objection to the proposed installation of Car Share spaces in Neutral Bay. As a resident of the area, I believe that this proposal is highly problematic and should not be implemented. 1. The proposal effectively amounts to the council providing free and private parking spaces for a private company that is profiting from this service at the expense of residents. This is unfair to the community and can lead to reduced availability of parking spaces for local residents. 2. Private car share services can lead to an increase in traffic congestion, noise pollution, and environmental impact, especially if vehicles are frequently being picked up or dropped off late at night or early in the morning. These issues can have a negative impact on the quality of life for residents in the area. 3. Parking is already a major issue in the area, with many residents struggling to find suitable parking spots for their vehicles. The proposed installation of a private car share space will only exacerbate this problem, making it even more difficult for residents to park in their own neighborhood. 4. There is very little transparency about this matter. As a resident, I have not been consulted or informed about the proposal until recently, and it appears that the council has not adequately considered the potential impact of this decision on local residents. Given these concerns, I strongly urge the council to reconsider the proposed installation of the private car share space on my street. I believe that this decision is not in the best interests of local residents and could have significant negative consequences for the community as a whole.	0

ID025 Premier Street	John	<p>Herewith I am lodging my objection to the proposed car share sites in the following locations: Hardie Street Premier Street &amp;the one adjacent to Lindsay street.</p> <p>Already we the ratepayers &amp; tenants in the area have difficulty parking close to our residents &amp; the situation is often worse for visitors. Those Car Share spaces already in existence are seldom used, so why create more. I have never seen the car space, already in existence at the bottom of Premier street , ever utilized,&amp; as for the new proposals I believe there is already on very close by in Yeo street &amp; this is seldom occupied. It would appear that, while North Sydney Council is allowing 1 bedroom Units to be built in this area without providing parking thus creating a need to more residential parking in the nearby streets. At the same time removing usable car spaces from existing residents What next, only care share spaces for Electric cars &amp; subsidised recharging electricity being provided by the rate payers of North Sydney?</p>	0
ID024 1 Bay Road	Tom	Excellent idea, reduces traffic and benefits the environment at the same time	1
ID024 1 Bay Road	Robyn	The proposed location for the ridesharing is supercongested already and would take away essential car parking that is at a premium already given the medium density housing, the railway station and the village shops. Please find an alternative location say in the village or behind the railway station	0
ID024 1 Bay Road	Matt	The parking in the area is so limited, because people are using their garages as storage and not for their cars. Recently I read, that North Sydney council is also considering for new development no longer requiring visitor parking space. Providing space for cars share companies is the wrong approach. The cars take needed parking space away and I am not supportive of this application.	0
ID024 1 Bay Road	Lee	Happy to have another car share spot though it's right next to people's front windows. Across the street would be almost better as the properties are set back from the road	1
ID024 1 Bay Road	Janelle	I am in favour of the proposal to install a new car share parking space on Harriott St, Waverton. There used to be one there closer to Bay Road and because I live on the corner of Bay Road and Waverton Lane I noticed that it was used quite regularly. So it seems that it would be of service to the community generally.	1
ID021 1 Nicholson Street	Jane	I would like to object to the car share space being placed on Nicholson street Wollstonecraft. This street is already difficult to get a park in for the 9 residences that do not have off street parking. We already have a car share car space on Nicholson street (just over a Hume street). It would make more sense to have the space in Oxley street near the station that is currently being built so that people coming to a Crows Nest from the station can easily access it.	0

IDO21 1 Nicholson Street	Laurie	<p>As a local resident I oppose this submission for the following reasons:</p> <ol style="list-style-type: none"> <li>1. Parking in that area is already quite scarce for residents of (address withheld). With no offstreet parking, this will further restrict our options.</li> <li>2. Parking in that area is largely taken up by short-term parking by non-local residents who are visiting Crows Nest, the church or the local daycare. Such users will not switch to car share. Anecdotally, I notice further along Christie street where parking is paid, less casual parking occurs, so I think the parking competition is largely due to the fact that the parking in that area is free for 1-2 hours and not because of local residents. Removing a car space does not help this kind of usership.</li> <li>3. Having been a user of a car share scheme in the past, I do not believe they are a suitable alternative to car ownership. You cannot guarantee a car is available when you need it, for example in an emergency. It has been my experience that when desperately needed, car shares are not available reliably, even where there are several in a location.</li> <li>4. As mentioned in point 2. there is plenty of empty spaces in the paid parking further along Nicholson St. Why not put the car share there?</li> </ol> <p>Thank you for considering the reasons for objecting.</p>	0
IDO16 Paling Street	Demetrius	I am in support of this proposal and highly encourage the council to look at EV carshare companies to service this car park.	1
IDO16 Paling Street	Stephen	I want Carshare in Paling St.	1
IDO16 Paling Street	Kim	I agree with a car share in Paling St	1
IDO16 Paling Street	Alan	Agree with proposed space	1
IDO16 Paling Street	John	Paling st is one of the only parking areas for rate paying residents to park where street parking is the only alternative. Often times there are no places available for the current demand. A car share space will place more stress on the limited parking currently available. The majority of residents don't choose to use car share and the majority should be the Council's priority.	0
IDO16 Paling Street	Tony	As residents in the area we are against this proposed car share parking as we need every car space in our street See attached (no attachment)	0
IDO16 Paling Street	Ashleigh		
IDO16 Paling Street	Peter	I support the provision of a car share parking space on Paling St. I consider that car share schemes are a benefit to the general community.	1
IDO16 Paling Street	Melinda	My building doesn't have any visitor parking and in peak times it can often be very difficult to find a park along Parraween & Paling street so I would vote no for a car share space to take up already full spaces.	0
IDO16 Paling Street	Debra	I believe this concept is a very good one, but I must stress, the process should be strictly monitored as to effectiveness and appropriate use. There is very limited parking in Paling Street and Parraween Street so parking for residents is at a premium, given the number of units in this area.	1

IDO16 Paling Street	Leanne	I don't agree with taking up a valuable parking spot for car share. The cremorne area surrounding Paling street is a high people traffic area due to its proximity to restaurants, cafes, movie theatre and other public accessible venues. We need all the street parking possible for such a high people traffic suburb. Please move the car share parking option to a lower public access location. We have a parking issue as it is and we should not lose any available parking spots.	0
IDO16 Paling Street	Chloe	Look at the area you're proposing this in. No one is going to dispose of their private vehicles in favour of a share care which then just takes up valuable parking space in an area with restaurants, bars and a cinema. Don't disagree with the principle, but would be more appropriate in a more residential area.	0
IDO16 Paling Street	Joshua	I do not want a car share only space here. There is not enough space to park during weeks nights, reducing the available parking will only add to the problem. Ada St has had its parking spaces reduced by no stopping signs being placed 10 metres from access road corners effectively removing 4 safe and viable car spaces from this quiet back street. Trying to find street parking Thursday through to Sunday night is near impossible, reducing the already slim pickings for parking will only cause more traffic in the area as residents/visitors to the local area look for parking.	0
IDO16 Paling Street	Peter	Instead of removing one of the few 2 hour "free" parking spots permanently why not utilise one of the metered spots in Parraween St. You could also combine an existing free motorbike spot (which are hardly used) with half a metered spot. There are better ways than punishing local residents by removing their free parking.	0
IDO16 Paling Street	Keris	Paling street is not the right location to remove a public parking space and allocate a carshare space. There are not enough parks available now to enable parking for people visiting the shops and services at Cremorne Plaza. Especially since the b- line and no stopping on military rd started, parking as gecine more difficult. Paling street parking is at a premium. Perhaps locate parking for carsharing at the other end if Paraween street down by the council carpark. I therefore object to a carshare parking space in Paling street.	0
IDO16 Paling Street	Name withheld	2 hours free parking is a premium feature for customers of local service based businesses.Paling St offers 2 hours free. The free council parking is frequently full. I have many customers who try & park on Paling for an hour. Losing 1 park there is significant. Metered parking has many empty spaces on Parraween. Could one of these be used instead?	0
IDO16 Paling Street	Michael	As a resident in Parraween St in Cremorne, I would like to give my feedback on the proposed Car Share Parking application for Paling St Cremorne. I understand the benefits of car Share parking, however could council please reconsider the position be allocated to Parraween St. Reasons for this is that non-metered parking is already rare for residents of the immediate area who have more than one car. My individual situation is that my partner and I have 2 cars, both of which are required for our employment and trying to find a parking spot is quite competitive and already rather difficult to find. Having lived in this area for many years overlooking Parraween St parking, many metered spots are unused and constantly available most days of the week. Limiting the number of spaces for residents in Paling St I believe to be quite unfair to residents like us trying to safety park within reasonable distance from our homes. Thank you for considering my feedback.	0
IDO16 Paling Street	Paul	NO to the proposal and what the Councils says are the 'Benefits of Care Share 'are fictious and without substance. Council has its own Parraween Street car park and Council may wish to forfeit one (1) of its rented car spaces for the proposed purpose.	0

ID016 Paling Street	Carolyn	Please – we do not have enough parking in this street as it is. Those who don't have a vehicle have close access to transport from Military Road. I firmly object to a parking space being allowed to be rented by Council as a way of making revenue. There is already a car share vehicle taking up space in Winnie Street just 20 metres away.	0
ID016 Paling Street	Margaret	I refer to your notice circulated on 20 April re the proposed car share space in Paling Street. I am in favour of the provision of ONE ONLY car share space at the entry to Paling Street, at Parraween Street.	1
ID014 Lavendar Street	Kayla	I would support more car share spaces in the local area as they are very useful for those of us who do not own cars but need to drive every so often.	1
ID014 Lavendar Street	Jonas	I write to you to protest the installment of an additional carshare parking space at 2 Lavender Street. The spaces in front of the building are regularly used by the residents of the building including myself and it is already difficult enough to find a space during the week. Seeing as there are already 2 carshare spaces at the proposed location and an additional 3 within 100m up the road on Miller street, I believe this to be unfair to the residents of the building who are paying for residential parking. I would like to emphasize once more that most parking spaces are always occupied during the day from Monday to Friday and also heavily used on Weekends by patrons of the Commodore hotel, and other venues in the Area. I am happy to discuss this further over the phone (mobile withheld) or in person if required. I thank you kindly for taking my comments into consideration and you have my permission to forward this on to the necessary parties involved.	0
ID014 Lavendar Street	Brett	I am a regular car sharing user and support having a space allocated at this location. The space is regularly unoccupied and would be better used for car sharing.	1
ID014 Lavendar Street	Will	Strongly against converting public street parking into car spaces for exclusive private enterprise use. Car share spaces do not encourage residents to share cars rather than buy cars- particularly in areas such as North Sydney/Lavender Bay where the ratepayers are affluent. This proposed car space is too close to the corner on a busy intersection and too close to the other share car space outside 161 Blues Point Road. Moreover, people should be more encouraged to take public transport which is plentiful and accessible from that location.	0
ID014 Lavendar Street	Adam	I service the area and there is not enough parking spots currently available. Dedicated ride share parking will make it more difficult!	0
ID014 Lavendar Street	Scott	Not supportive	0
ID013 Harriott Street	Name withheld	I do not support an additional car share parking space on Harriott Street. This is a small residential street with limited parking. It is often difficult for visitors to park due to the heavy demand for spaces by residents of several unit blocks with addresses on Bay Road and Crows Nest Road. This is compounded by commuters who work in the North Sydney CBD or study at ACU who frequently occupy the small number of unrestricted spaces. I also note that there is already	0



		one car share spot on the street, which is often empty, and further spots on Crows Nest Road near the corner of Harriott Street.	
ID013 Harriott Street	Michael	Hi, I rent a unit at (address withheld) near this proposed car share space. I run a lawn mowing business and often need to tow a trailer to run my business. As I cannot park a trailer in the small garage of the unit I need to park on the street and often end up in Harriot St. I object to the car share space being created here. If it does go ahead, it would be great if you can put it at the end of a parking section (I.e. first park from the lane) to keep as much long continuous parking area so I can get a car and trailer in and out and have more chance of finding a long enough spot.	0
ID013 Harriott Street	Matt	The parking in the area is so limited, because people are using their garages as storage and not for their cars. Recently I read, that North Sydney council is also considering for new development no longer requiring visitor parking space. Providing space for cars share companies is the wrong approach. The cars take needed parking space away and I am not supportive of this application.	0
ID013 Harriott Street	A	There is already a car sharing spot reserved on Harriet st used for a van which seems to only be used infrequently. Rather than adding another spot and reducing parking for others it be car sharing company should consider converting to a vehicle which is more commonly booked	0
ID013 Harriott Street	Name withheld	I am not in favour of 1-car space proposed on Bay Rd Waverton. This is in Zone 10 and the zone is more restrictive to residents in regard to on street parking permits when compared to neighbouring zones. It is already difficult for residents and their visitors of Zone 10 to park on street in Zone 10, coupled with limited spaces. Removing one more space would compound the issue. Hence I recommend the 1-car share car space is moved to a neighbouring zone that offers greater on street allocations for residents, for example, Crows Nest Rd Waverton close to the junction of Bay Rd Waverton. I further recommend the car share is taken from a 1-hour parking space instead of a 2-hour parking space because very little can be achieved parking in a 1 hour space other than 'kiss and drop' tasks and therefore the uses of a 1-hour space are limited. Re-allocating the car share space to an existing 1-hour space will increase frequency of use of a 1-hour space. An alternative recommendation if it exists: instead of removing any existing car spaces, is the creation of a new purposeful car space on council property in Waverton.	0
ID013 Harriott Street	Nicola	I am against the installation of a car share parking space on Harriott Street on the basis that there is already insufficient parking on that road. It is already challenging to find parking on Harriott street due to the number of apartments and lack of off street parking. This is further exacerbated by the resident parking permit zones. For example, residents of 1 Harriott street with a parking permit can only park along half of Harriott street as only half of the street is within the relevant permit zone. Placing a car share space on Harriott street will reduce available space es even further and render it more difficult for residents to park within their parking zone without having to park several streets away. In addition, Harriott street is a relatively short street off two long bustier streets with limited parking. There is also already a share car parking space on Harriott Street and so it is not appropriate for a second one. Any additional shared car spaces should be placed on bay road or crows nest road, which are longer, busier streets that would be more appropriate.	0

ID013 Harriott Street	Oliver	Object to the car share due to minimal existing public parking and proximity to trains	0
ID012 Hardie Street	David	I do not agree with taking away one free car space for the local residents in favour of a car share company who will be making money out of this venture. Removing a space will also cause further traffic congestion by driver's who are forced to "traffic cruise" to find an alternate parking space.	0
ID012 Hardie Street	Elliott	Car share schemes (and their car spaces) are great at reducing the need for every adult to own a car, and in turn encourages people without a car to also use public transport more often. This is especially so in higher density areas like the North Sydney Council area. As share cars and public transport move to electric, we'll progress to an even more positive ecological situation. I think we should encourage more share cars, more share car companies (for competition) and less car ownership in our area.	1
ID012 Hardie Street	John	Herewith I am lodging my objection to the proposed car share sites in the following locations: Hardie Street Premier Street &the one adjacent to Lindsay street. Already we the ratepayers & tenants in the area have difficulty parking close to our residents & the situation is often worse for visitors. Those Car Share spaces already in existence are seldom used, so why create more. I have never seen the car space, already in existence at the bottom of Premier street , ever utilized,& as for the new proposals I believe there is already on very close by in Yeo street & this is seldom occupied. It would appear that, while North Sydney Council is allowing 1 bedroom Units to be built in this area without providing parking thus creating a need to more residential parking in the nearby streets. At the same time removing usable car spaces from existing residents What next, only care share spaces for Electric cars & subsidised recharging electricity being provided by the rate payers of North Sydney?	0