

## **10.9. Burton Street and Bligh Street Kirribilli Permanent Closure and Shared Zone Design Concepts – Post Exhibition**

**AUTHOR:** Diana Mejia, Project Manager

**ENDORSED BY:** Duncan Mitchell, Director Engineering and Property Services

### **ATTACHMENTS:**

1. Submissions Summary for Burton and Bligh Streets Kirribilli [**10.9.1** - 43 pages]
2. Burton Bligh Streets Kirribilli PREFERRED OPTION 1 B [**10.9.2** - 12 pages]

### **PURPOSE:**

This report provides Council with the outcome of the community consultation on the detailed Concept Design Options for the permanent closure of Burton Street and the transformation of Bligh Street Shared Zone, in Kirribilli.

### **EXECUTIVE SUMMARY:**

Council, at its meeting on 26 September 2022, endorsed the public exhibition of the detailed Concept Design Options for the permanent closure of Burton Street and the transformation of Bligh Street Shared Zone in Kirribilli for 42 days. Community consultation was undertaken between September and November 2022 in line with the Community Engagement Strategy developed for this project.

Council received a total of 191 submissions, comprising of 168 online submission forms, 10 written submissions and 13 submissions from the Community Workshop (Attachment 1). The outcomes of the consultation were:

- Burton Street Permanent Closure – 67.26% for Option 1, 11.31% for Option 2, and 21.43% for neither option.
- Bligh Street Shared Zone – 61.90% for Option 1, 13.69% for Option 2, and 24.4% for neither option.

This report outlines the consultation outcomes and changes made to the concept plans as a result of the feedback received. The final design concepts for each site are included in this report to Council for adoption (Attachment 2).

### **FINANCIAL IMPLICATIONS:**

Funding for this project is included in the Capital Works delivery program for 2022-23. The project is also partially funded through funds carried over from the Special Rate Variation (SRV) 2021/2022 financial year.

Council has been successful in obtaining \$950,000 grant funding for the implementation of the Bligh Street Shared Zone as part of Transport for NSW's 2022/23 "Get NSW Active" program. The funding deadline to finish construction is 2 October 2023.

It should be noted that delaying detailed design and construction may result in the loss of grant funding as the program timeframe is constrained.

**RECOMMENDATION:**

- 1.THAT** Council note the submissions received.
- 2.THAT** Council adopt Option 1B for Burton Street as the preferred option with the inclusion of modified design elements as outlined in this report.
- 3.THAT** Council proceeds with detailed design and construction of the permanent closure of Burton Street.
- 4.THAT** Council adopt Option 1B for Bligh Street Shared Zone as the preferred option with the inclusion of modified design elements as outlined in this report.
- 5.THAT** Council proceeds with detailed design and construction of the Bligh Street Shared Zone.
- 6. THAT** Council note the successful \$950,000 grant funding for the implementation of Bligh Street Shared Zone, and the funding deadline of 2 October 2023 to finish construction.

## **LINK TO COMMUNITY STRATEGIC PLAN**

The relationship with the Community Strategic Plan is as follows:

### 1. Our Living Environment

1.4 Well utilised open space and recreational facilities

### 2. Our Built Infrastructure

2.1 Infrastructure and assets meet diverse community needs

2.2 Vibrant public domains and villages

### 3. Our Innovative City

3.1 Our commercial centres are prosperous and vibrant

3.3 Distinctive sense of place and design excellence

## **BACKGROUND**

The public domain of the Kirribilli Village Centre area is in need of upgrading. This area in its current form was designed and built in the mid-1990s and is now looking increasingly outdated and tired. In the Kirribilli Village Centre, there are multiple layers of streetscape elements which have been combined together over the decades, creating an ad-hoc streetscape character that is visually inconsistent and difficult for Council to maintain. The colour scheme, paving materials and streetscape furniture do not resonate with current contemporary approaches of Urban Design and “Place Making”. In addition, some of the various palettes of materials originally used have performed poorly over the years.

Following 60 days of Community Consultation, Council at its meeting on 22 February 2021 resolved to adopt the Masterplan for the Public Domain upgrade of Kirribilli Village Centre. Two key areas identified as part of the Masterplan were the closure of Burton Street and the transformation of Bligh Street as a Shared Zone.

The Burton Street Pedestrian Plaza and Bligh Street Shared Zone were also part of a trial in 2021 under the “Streets as Shared Spaces” program, whereby Council received funding from the Department of Planning and Environment (DPIE) to trial the closure of Burton Street and implement a shared zone in Bligh Street. The outcome of the trial was reported to Council on 26 April 2022.

Council, at its meeting on 26 April 2022, endorsed the permanent closure of Burton Street between Humphrey Place and Broughton Street, and the permanent transformation of Bligh Street into a Shared Zone, in Kirribilli. It was also resolved that, before proceeding with the final design of both the permanent closure of Burton Street and the transformation of Bligh Street, Concept Design Options be brought back to Council for endorsement.

Council engaged the professional consultancy services of Turf Design Studio to prepare two design concepts for the proposed Burton Street Pedestrian Plaza and Bligh Street Shared Zone.

A Councillor Briefing session on these projects was held 20 September 2022, and Council at its meeting on 26 September 2022 resolved:

*1. THAT the detailed concept design options for the permanent closure of Burton Street and transformation of Bligh Street into a shared zone be placed on public exhibition for 42 days.*

*2. THAT A Public Exhibition Period of 42 days is endorsed for these two projects because the proposed sites have been previously publicly exhibited for community consultation for 245 days as follows:*

- *Kirribilli Masterplan Consultation (60 days) between September and November 2020*
- *Burton Street Pilot closure and Bligh Street Pilot shared zone (185 days) between September 2021 to 31 March 2022*

*Both public consultations resulted in majority support for the projects*

*3. THAT consultation with the Community on the concept design options for the permanent closure of Burton Street and the transformation of Bligh Street shared zone be undertaken in accordance with the attached Community Engagement Strategy.*

*4. THAT a report on the outcomes of the Community Consultation be prepared and brought back to Council, along with the preferred final concept designs for both projects at the end of the 42-day exhibition and consultation period.*

*5. THAT during the public exhibition period there is a community workshop including local businesses with Council staff to discuss finishes and colours of the design.*

As per Council's resolution, community engagement and public exhibition was undertaken between 4 October and 14 November 2022.

## **CONSULTATION REQUIREMENTS**

Community engagement was undertaken in accordance with Council's Community Engagement Protocol. This report provides the results of the consultation on the proposal.

A Councillor Briefing session was held on 20 September 2022.

## **DETAIL**

In response to the Council resolution of 26 April 2022, Council engaged the professional consultancy services of Turf Design Studio to prepare two detailed design concepts for each site - Burton Street permanent closure and transformation into a pedestrian plaza, and the conversion of Bligh Street into a permanent Shared Zone.

The design concepts are based on the adopted Masterplan for the Kirribilli Village Public Domain improvements and incorporate the feedback received in both previous Community Consultation periods including:



- 84% overall support during the Kirribilli Masterplan community consultation undertaken between September and November 2020 (60 days)
- 88% support for Burton Street Pilot closure and Bligh Street Pilot shared zone between September 2021 and 31 March 2022, reported to Council on 26 April 2022

## COMMUNITY CONSULTATION DETAILS

This report details the outcomes of community consultation on the proposed Detailed Concept Design Options for the permanent closure of Burton Street and the transformation of Bligh Street Shared Zone, in Kirribilli.

### Summary of Submissions:

Council received a total of 191 submissions, comprising 10 written submissions, 13 community workshop submissions, and 168 online feedback forms (Submissions Summary attached to this report). The majority of respondents supported the proposal (70.2% support for the general proposal).

The following table collates the feedback preference per source:

**Table 1. Submission Sources**

Source	No.	Appendix Ref.
Online feedback form (via Your Say North Sydney)	168	Appendix A
Written submissions (email/letter)	10	Appendix B
Community workshop	13	Appendix C
Information session	2	Appendix D
Precinct Committees (submission and/or minutes extract)	1	Appendix E
<b>Total</b>	<b>191</b>	

### a. Public Exhibition

In accordance with the Community Engagement Strategy, the public consultation ran from 4 October to 14 November 2022. To spread awareness and encourage stakeholders to have their say during the exhibition period, the feedback form and detailed concept design options were promoted using the following means:

- Letterbox drop of 3434 A4 notification letter, distributed to all properties within Kirribilli including local residents, property owners and businesses. This flyer invited all receipts to have their say accessing the consultation website and it promoted an online information session open to all held on 11 October 2022.
- Memo with consultation details was distributed to all Councillors and active Precinct Committees.
- Council's E-newsletters including Council E-news, Precincts E-news and Business E-news.

- Posters with QR code to project website and key dates were also installed in key thoroughfares in the area to promote and encourage the community to have their say during the exhibition period.
- Detailed concept design options were available to review online.
- Hard copies of the documents were made available by request to stakeholders that did not have access to online documents.
- A Councillor briefing on the Project was held on Tuesday 20 September 2022.
- Council’s social media accounts on 4 October 2022.
  - Facebook: 16,531 people reached, 4325 post engagements, 60 likes, 128 link clicks, 20 comments and 5 shares
  - Instagram: 5,826 impressions, 2373 reach, 54 likes, 4 comments
  - LinkedIn: 779 impressions, 27 clicks, 7 reactions, 1 repost
- Twitter - 142 impressions, 12 engagements, 3 detail expands
- Online information session held on 11 October 2022 with 19 pre-registered attendees including residents, property owners and businesses.
- Community Workshop session held on 8 November 2022 with 17 attendees including residents, property owners and businesses.
- Have your say website released 4 October 2022 to allow community access to all the project information and to provide online feedback at any time, during the consultation period there were 1,220-page views.

**b. Submissions’ analysis:**

The submissions received were collated and analysed and summarised below. Attachment 1 details the consultation outcomes including the preferred option, highlighting the most and least liked features, and suggested changes to the final design.

The following tables collate the submission preferences for Burton Street and Bligh Street respectively.

**Table 2. Burton Street Submission Preferences**

<b>Burton Street Permanent Closure</b>	<b>Option 1</b>	<b>Option 2</b>	<b>Neither</b>
Online feedback form	113	19	36
Written submissions	3	1	6
Community workshop	4	0	9
Information session	0	0	0
Precinct Committees	0	0	1
TOTAL	120	20	52

**Table 3. Bligh Street Submission Preferences**

<b>Bligh Street Shared Zone</b>	<b>Option 1</b>	<b>Option 2</b>	<b>Neither</b>
Online feedback form	104	23	41
Written submissions	4	1	5
Community workshop	4	1	8

Information session	0	0	0
Precinct Committees	0	0	1
TOTAL	112	25	55

In summary:

- Council received a total of 191 submissions. Comprising 10 written submissions, 13 workshop submissions and 168 online submission forms. A targeted population of 3,434 was established to include all properties within Kirribilli, to increase confidence levels of the consultation additional promotion was sent via different media channels.
- Majority of submissions (70.20%) support the general exhibited proposal.
- Majority of submissions (67.26%) support the Option 1 of the exhibited Detailed Concept Design for the permanent closure of Burton Street.
- Majority of submissions (61.90%) support the Option 1 of the exhibited Detailed Concept Design for the transformation of Bligh Street shared zone.
- Submissions were received as follows:
  - 168 online feedback form responses
  - 10 free format submissions
  - 1 submission from Precincts\*\*
  - 1 motion from Streetscape Committee via minute\*\*
  - 5 feedback forms from Community Workshop
  - 8 submissions from workshop attendees

*\*\* Precinct submissions also recorded as individual submissions and in the community workshop.*

#### **c. Free Format Submissions Summary:**

Of the 10 written submissions letters, 5 did not support any of the options or the project, 3 supported the overall proposal, and 2 did not express support or opposition, however all provided comments that are addressed via the amended preferred option.

#### **d. Community Workshop:**

Council at its meeting 3765th on 26 September 2022 resolved:

*5. THAT during the public exhibition period there is a community workshop including local businesses with Council staff to discuss finishes and colours of the design.*

Following the above-mentioned Council resolution, a Community Workshop was held Tuesday 8 November. This in-person workshop gave community members and local businesses the opportunity to discuss finishes and colours of design with the Design Consultant and Council staff.

There were 17 participants representing local residents, together with community group representatives from. the Milson Precinct Committee, the Milson Point Residents Group, and

The Lavender Bay Precinct Committee, and businesses. Councillors were also welcome to attend.

During the workshop, a group activity was undertaken with groups of 4 people, selected randomly. The workshop commenced with an overview, then a question and answer session, followed by breaking out into small groups where everyone had the chance to put forward ideas. Putting an idea or request in writing ensured that feedback was recorded and considered in decision-making.

**e. Feedback form - online submissions:**

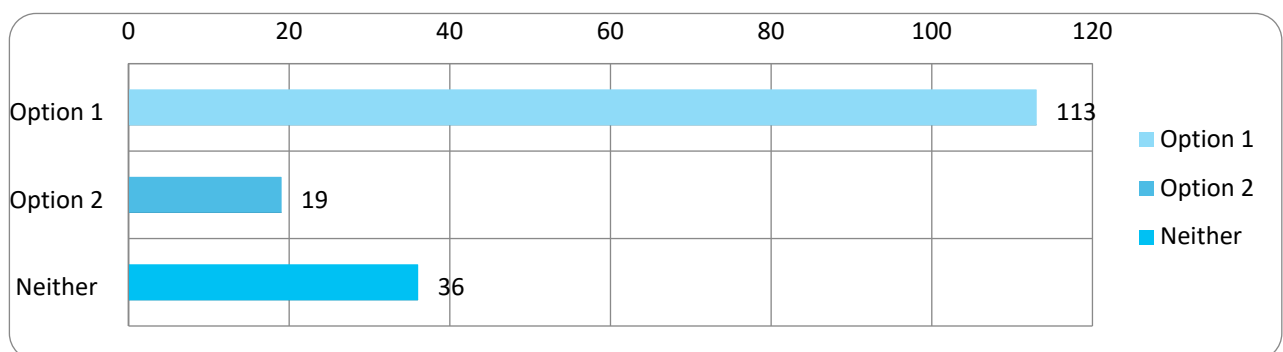
The online submission form included a series of questions. The results are summarised below:

Question 1 – (Optional) Burton Street Permanent Closure - Which is your preferred design option?

This was an optional question and respondents were asked to indicate a preference for this question, being Option 1 or Option 2. 36 submissions did not support either of the options. A summary of the results to this survey question is below.

- 1. Option 1 – 67.26%
- 2. Option 2 – 11.31%
- 3. Neither – 21.43%

**Figure 1 - Question 1 Burton Street Permanent Closure Survey Responses Graph**



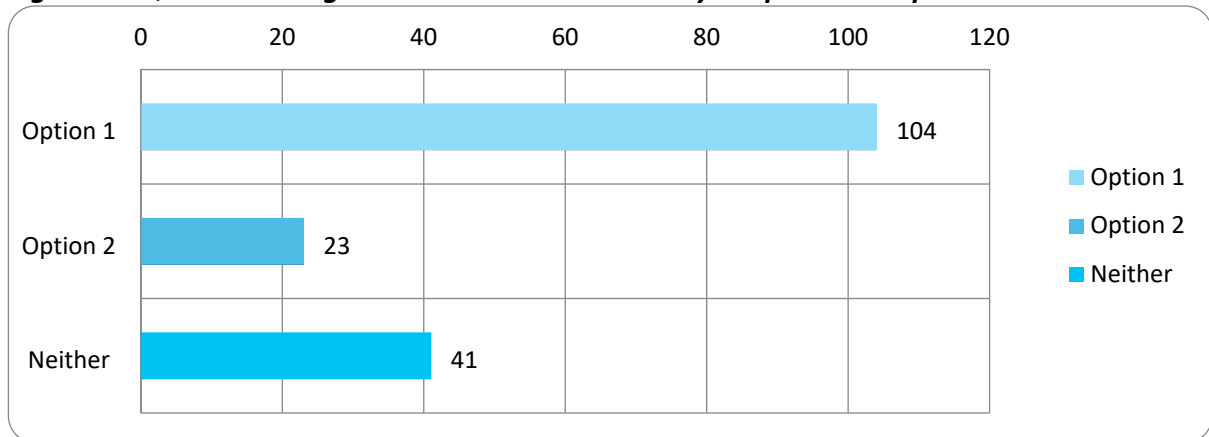
The responses to this question indicate most respondents support detailed concept design Option 1 for Burton Street Permanent Closure.

Question 2 - (OPTIONAL) Bligh Street Shared Zone - Which is your preferred design option? (Note: Option 1 and Option 2 Layout is the same but with different finishes)

This was an optional question and respondents were asked to indicate a preference for this question, being Option 1 or Option 2. 41 submissions did not support either of the options. A summary of the results to this survey question is below.

1. Option 1 – 61.90%
2. Option 2 – 13.69%
3. Neither – 24.40%

**Figure 2 - Question 2 Bligh Street Shared Zone Survey Responses Graph**



The responses to this question indicate strong support for Detailed Concept design Option 1 for Bligh Street Shared Zone.

**Respondents General Comments:**

Below is a summary of comments made, and concerns raised by the respondents.

**Comments:**

1. Linkage to the Rocks and Sydney Harbour Bridge heritage character
2. Reference to our heritage as a ‘sister suburb’ to The Rocks and as host to Admiralty House, Kirribilli House, and the iconic Harbour Bridge.
3. Use of materials which are in keeping the heritage character, perhaps more sandstone and less concrete
4. Consensus to permanently close Burton Street

**Concerns:**

- 1) Modern materials proposed for Burton Street such as concrete walls and stainless steel are not appropriate for Kirribilli Village
- 2) I feel Council is stripping the suburb of charm and green space.
- 3) Remove bulky, cold, slimy off-form concrete
- 4) Strong dislike for painted blue colour – preference for black paint to pots, light poles.

**Question 1 Concept Design for Burton Street Permanent Closure as a result of Community Consultation**





In response to the feedback received, design elements identified from community feedback have been included where possible, into an iteration of Option 1 to make it into the Preferred Design – Option 1B. Refer to Table 4.

**Table 4. Changes incorporated into option 1B – Burton Street Closure - as a result of community feedback**

Criteria	Option 1 – Original design	Option 1B – Preferred design
<p>1. Pedestrian access</p>	<p>Accessible pathway through the centreline of Burton Street</p> 	<p>Accessible pathway through the centreline of Burton Street</p> 
<p>2. Round concrete seats 'cold, slimy concrete'</p>	<p>Re-use round concrete seats</p> 	<p>Remove round concrete seats</p> 
<p>3. Concrete terrace seats 'Bulky, uncomfortable off form concrete'</p>	<p>Pre-cast concrete proposed for terraces seats in Burton Street</p> 	<p>Timber top seating to terrace seats in Burton Street</p> 
<p>3. Paving material</p>	<p>Light coloured pavers proposed</p>	<p>Dark paver proposed for uniform classic look</p>



Criteria	Option 1 – Original design	Option 1B – Preferred design
		
<p>4. Existing blue planter boxes to be painted black</p>	<p>Existing Blue planter boxes</p> 	<p>Existing planter boxes to be painted black</p> 
<p>5. Lighting</p>	<p>Modern pole top lights proposed for Burton and Bligh Streets</p>  <p><i>Photo 1 Modern pole top lights</i></p>	<p>Heritage style lights be installed in Burton and Bligh Streets (black colour)</p>  <p><i>Photo 2 Heritage style lights to be installed in Burton &amp; Bligh Streets</i></p>

Criteria	Option 1 – Original design	Option 1B – Preferred design
6.Planting scheme	Contemporary planting scheme proposed 	Heritage style planting scheme such as Buxus, flowering colour proposed 
7. Bollards	Modern stainless steel bollards proposed 	Heritage style bollards to be used on Burton Street 

**Preferred Design Option 1B – Burton Street Closure**





*Photo 3 Artist impression of Option 1B Preferred design for Burton Street, Kirribilli, day view*



*Photo 4 Artist impression of Option 1B Preferred option for Burton Street, Kirribilli, night view*




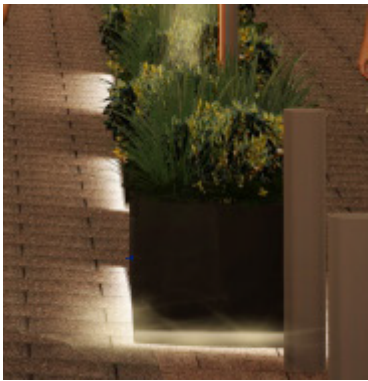
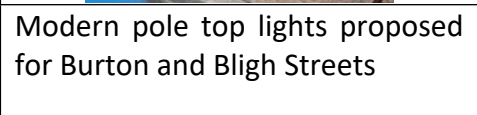
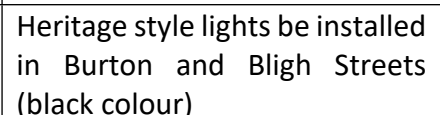




**Question 2. Bligh Street Shared Zone - Concept Design amendments and Preferred Options as a result of Community Consultation**

In response to the feedback received, design elements identified from community feedback have been included where possible, into an iteration of Option 1 to make it into the Preferred Design – Option 1B. (Attachment 2). Refer to Table 5.

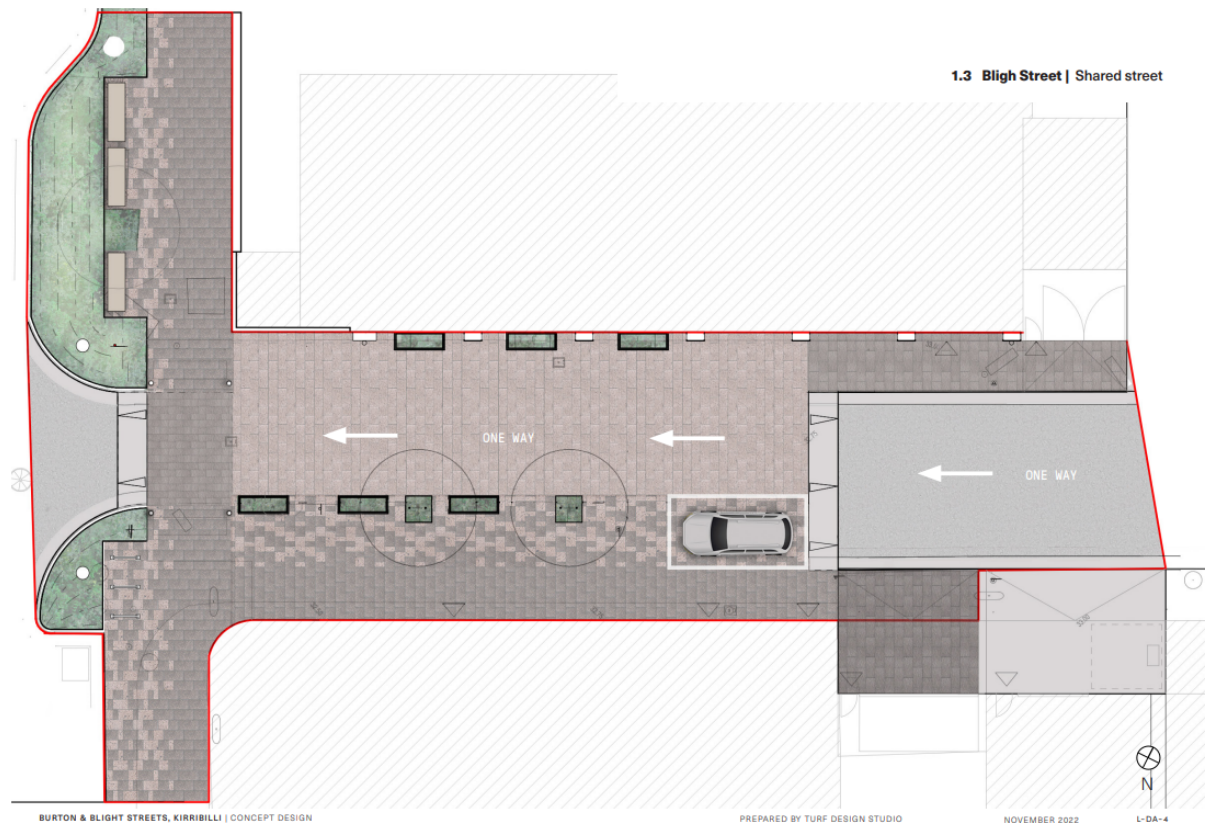
1. Use darker paver type for a uniform classic look
2. Existing blue planter boxes to be painted black
3. Amend proposed lighting pole to reflect heritage looking light.
4. Future consideration for the removal of 1 car space outside Coco Chocolate (Bligh Street) for outdoor dining, subject to further consultation.

**Table 5. Changes incorporated into option 1B – Bligh Street “Shared Zone” - as a result of community feedback**

Criteria		Option 1 – Original design	Option 1B – Preferred design
1. Paving material		Light coloured pavers proposed 	Dark paver proposed for uniform classic look 
2. Existing blue planter boxes to be painted black		Existing Blue planter boxes 	Existing planter boxes to be painted black 
3. Lighting		Modern pole top lights proposed for Burton and Bligh Streets 	Heritage style lights be installed in Burton and Bligh Streets (black colour) 

Criteria		Option 1 – Original design	Option 1B – Preferred design
		 <p data-bbox="582 669 924 698"><i>Photo 5 Modern pole top lights</i></p>	 <p data-bbox="1003 669 1375 730"><i>Photo 6 Heritage style lights to be installed in Burton &amp; Bligh Streets</i></p>
4. Parking		Existing 1/4P parking space to be retained	Future consideration for the removal of 1/4P parking space for outdoor dining, subject to further consultation.

**Preferred Design Option 1B – Bligh Street “Shared Zone”**



*Plan of Option 1B Preferred option for Bligh Street “Shared Zone”, Kirribilli*

## Program

**Table 6. Implementation program**

<b>Activity</b>	<b>Delivered by</b>
<i>Tender and construction documentation</i>	<i>February 2023</i>
<i>Construction procurement</i>	<i>March - April 2023</i>
<i>Commencement of Construction</i>	<i>April 2023</i>
<i>Finish Construction (Funding deadline)</i>	<i>2 October 2023</i>

## Summary and Recommendations

Given that the majority of respondents generally support Option 1 for the Burton Street Permanent Closure, and Option 1 for the Bligh Street Shared Zone, it is recommended that Council adopts the revised preferred options 1B (Attachment 2) which include feedback from the design workshop held on 8 November 2022, and proceeds with detailed design for tender and construction.

**ATTACHMENT A**

**Burton Street and Bligh Street Kirribilli - Permanent Closure and Shared Zone Design Concepts**  
**Summary of submissions received during public exhibition period**  
**Online feedback form (Verbatim)**  
**(4 October - 14 November 2022)**

Burton Street and Bligh Street - Permanent Closure and Design Concepts SUBMISSIONS SUMMARY ONLINE FEEDBACK FORM (4 October - 14 November 2022)						
No.	Name and Address	Burton St - preferred option	Bligh St - preferred option	Burton Street - Comments	Bligh Street - Comments	Other comments
1	Varina Krook Bligh St KIRRIBILLI	Option 1	Option 1	I think the design of option 1 is more suitable for mothers with prams, little toddlers on small tricycles or scooters, wheelchair access and people with small trolleys/anything on wheels. The steps in option 2 makes this design less inclusive to all.	It is unclear which finishes belong to which option. The existing street lights and benches are preferred as they are in keeping with the character of Kirribilli. Pavers used outside The Botanist in Kirribilli are dangerously slippery when wet!!	Bligh St. should not be closed to traffic as it will create a bottleneck on Fitzroy St. Which is already a narrow St. that becomes completely jammed at school times. Bligh St. should remain open to ease traffic.  Pavers for Bligh St. should not be slippery when wet. Interlocking concrete pavers with soldier course frame might be least slippery option without introducing completely out of character stainless steel.
2	Richard McMahon McDougall St KIRRIBILLI	Option 1	Option 2	I strongly support Option 1, and do not support Option 2. There is nowhere for people to sit under Option 2! The current trial (& option 1) provide extra seating for people to meet/relax without needing to buy a coffee etc, and this is a great addition	Either is fine. On balance I prefer Option 2 as it makes it clearer that cars could enter (i.e. that the space is truly shared), but I don't feel strongly	Only to reiterate my support for Option 1 for Burton Street - please provide somewhere for people to sit/enjoy the space!!
3	Richard Sweet Winslow St KIRRIBILLI	Option 1	Option 1	N/A	N/A	N/A

Burton Street and Bligh Street - Permanent Closure and Design Concepts SUBMISSIONS SUMMARY ONLINE FEEDBACK FORM (4 October - 14 November 2022)						
No.	Name and Address	Burton St - preferred option	Bligh St - preferred option	Burton Street - Comments	Bligh Street - Comments	Other comments
4	Vanessa Butler Carabella St KIRRIBILLI	Option 1	Option 1	N/A	Bligh street should be permanently closed.	N/A
5	Maureen Ayre Premier Street NEUTRAL BAY	Option 2	Option 2	It's the best decision for the safety and the benefit of residents.	This needs to happen along with Burton Street	Yes, but a pedestrian cross and round about should be put at the intersection of Willoughby Street & Broughton Street.
6	Suzy Grierson 27B Elamang Ave KIRRIBILLI	Option 1	Option 2	Option 1 is vastly superior to Option 2. It is a place for people to stop and enjoy whereas Opt 2 is just another thoroughfare. The separation of the casual social space from the restaurant tables is elegantly done in Opt 1. And we keep the toad stools :)	No particular preference either way on the finishes.	Well done to all involved in the Burton St space. It has contributed a lot to making this part of Kirribilli more people friendly and it is great to see it being made permanent. I would like to know what is going to happen to the long wooden benches further along Burton St outside Ainoya. They are great around these busy cafe areas, perfect for a coffee and a chat. I was sorry to see the one outside the hairdresser disappear. It would be really good to see the benches from the temporary street closure repurposed elsewhere in Kirribilli and Milsons Point. Please keep them! They add a lot to the street atmosphere and cool village vibes. More planting and the new trees in the closed part of the street is also appreciated. I hope the gardening team in Council knows how much their work is appreciated by residents. They do a wonderful job in the parks and streets all around this area.
7	Ashleigh McDougall St KIRRIBILLI	Option 1	Option 1	Please keep it flat so that it's accessible for wheelchairs and prams.	N/A	Definitely look to create more outdoor seating space.
8	Jackson Tile Broughton St KIRRIBILLI	Option 1	Option 1	I don't like the idea it's waste of money	Waste of money	N/A

Burton Street and Bligh Street - Permanent Closure and Design Concepts SUBMISSIONS SUMMARY ONLINE FEEDBACK FORM (4 October - 14 November 2022)						
No.	Name and Address	Burton St - preferred option	Bligh St - preferred option	Burton Street - Comments	Bligh Street - Comments	Other comments
9	Susan Young Holbrook Ave KIRRIBILLI	Option 1	Option 1	Option 1 (non stepped) is preferred. 'Artist's impressions 'of both options say it all. Option 1 (non-stepped) shows baby in pram ON the Burton St whereas Option 2 (stepped) shows mother wistfully on flat surface off-street. Level changes unnecessary.	Prefer a total conversion of the space to shared zone rather than retaining footpaths.	Any change from the current "cheerful" colours on Burton St will be welcome.
10	Alex Jones Willoughby St KIRRIBILLI	Option 1	Option 1	Strong support for concept 1. As one of the many older people in the area, I would say that the inclusion of steps in concept 2 represents a hazard for pedestrians	I see no reason for not closing that part of Bligh Street altogether. There is no reason why the one way flow in Bligh Street can not be reversed, directing traffic back to Carabella Street. This would enhance pedestrian safety without disadvantaging drivers	I would like to register strong support for concept number 1 for the permanent closure of part of Burton Street, Kirribilli. Speaking as one of the many older people in the area who use this street every day, I would say that the inclusion of steps in concept 2 presents a major hazard to pedestrians. Concerning Bligh Street, I fail to see any reason why the section between Humphrey Place and Broughton Street should not also be closed. A loading bay could be included, but traffic could be returned to Carabella Street by reversing the one-way direction for Bligh Street. This would increase pedestrian safety and not disadvantage anyone.
11	Yive Yang Carabella St KIRRIBILLI	Option 1	Option 2	Option 1 provides much more usable sitting space and allows the area to actually be used by people. However, more maintenance will be required to keep the area clean.	Different coloured markings/materials will help pedestrians know that this is a shared zone. Using the same colour may confuse pedestrians into thinking the road is for pedestrian use only and increase danger.	N/A

Burton Street and Bligh Street - Permanent Closure and Design Concepts SUBMISSIONS SUMMARY ONLINE FEEDBACK FORM (4 October - 14 November 2022)						
No.	Name and Address	Burton St - preferred option	Bligh St - preferred option	Burton Street - Comments	Bligh Street - Comments	Other comments
12	Sean Mura Carabella St KIRRIBILLI	Option 1	Option 1	N/A	N/A	N/A
13	Kate Evers Carabella St KIRRIBILLI	Option 1	Option 2	Option 1 seems more socially conducive (centre tables) and better for people with mobility issues (no steps).	Hardly matters, but the main functional issue with this area has not been addressed with the design and that is that both cars and pedestrians are unsure who has right of way at the crossing.	Please put more rubbish bins near this corner.
14	Kate Mura Carabella St KIRRIBILLI	Option 1	Option 1	Re Option 2- Seems crazy to add steps to a relatively flat area. Will cause issues for users in wheelchairs & prams.	N/A	N/A
15	Grace Gately Ennis Rd KIRRIBILLI	Option 2	Option 2	again we need benches for elderly senior comfort.	N/A	You have forgotten the seniors of Kirribilli. There needs to be attractive chair like seating with back support. not cement slabs.
16	Oscar Stanish Alfred St MILSONS PT	Option 1	Option 1	please stop businesses using the end of the shared zone (southeast) as a rubbish collection area	you should remove the single parking space. if its important enough to be a shared zone its important enough to remove one parking space so that it can be better enjoyed	N/A
17	Peter Antaw Elamang Avenue KIRRIBILLI	Option 1	Option 1	I love the proposal but would like to continue along Burton St to Crescent Place	Good	N/A
18	Matt MILSONS POINT	Option 1	Option 1	Excellent!	Wish it could be closed permanently but shared zone is ok	Good work. Get the final options completed asap.
19	Maddie Bent St NEUTRAL BAY	Option 1	Option 1	N/A	N/A	Burton Street design option 2 is not wheelchair/pram friendly with a step design



Burton Street and Bligh Street - Permanent Closure and Design Concepts SUBMISSIONS SUMMARY ONLINE FEEDBACK FORM (4 October - 14 November 2022)						
No.	Name and Address	Burton St - preferred option	Bligh St - preferred option	Burton Street - Comments	Bligh Street - Comments	Other comments
20	Mikkel Maibom Upper Pitt Street KIRRIBILLI	Option 1	Option 1	N/A	N/A	N/A
21	Elena Carabella St KIRRIBILLI	Option 2	Option 2	Get rid of big cement tubs change colour of pavement to neutral colour spread potted plant out more	Leave as is	Don't waste council money by placing and replacing
22	Victoria MacRae Kirribilli Ave KIRRIBILLI	Option 1	Option 2	I prefer an option that is more accessible to all potential users of the space, however do not want it to feel that potential council infrastructure is only to be used by patrons of the immediate business.	N/A	N/A
23	Karen Peel St KIRRIBILLI	Option 2	Option 2	Great idea	Great idea	N/A
24	Yvonne Chan Shirley Rd WOLLSTONECRAFT	Option 1	Option 1	N/A	N/A	N/A
25	Sophie Gerber Holbrook Ave KIRRIBILLI	Option 1	Option 1	It's a great initiative - please do go ahead with it and consider doing more of this type of thing around the North Sydney area.	It's a great initiative - please do go ahead with it and consider doing more of this type of thing around the North Sydney area.	Please get this done ASAP and do more in the area.
26	Catherine Pettitt Kirribilli Ave KIRRIBILLI	Option 1	Option 1	N/A	N/A	N/A
27	Gail Hamilton McDougall Street KIRRIBILLI	Option 1	Option 1	N/A	N/A	N/A
28	Brian Lindsay Upper Pitt St KIRRIBILLI	Option 2	Option 2	The permanent closure of Burton St has worked extremely well and created terrific amenity. Further such initiatives are to be encouraged.	N/A	N/A

Burton Street and Bligh Street - Permanent Closure and Design Concepts SUBMISSIONS SUMMARY ONLINE FEEDBACK FORM (4 October - 14 November 2022)						
No.	Name and Address	Burton St - preferred option	Bligh St - preferred option	Burton Street - Comments	Bligh Street - Comments	Other comments
29	Name and address withheld	Option 1	Option 1	Great Idea! The plaza is a positive for the community to enjoy eating and leisure time, without the unpleasantness of traffic noise and exhaust fumes. A relaxing, beautiful area for the public to meet and enjoy food/drinks	Same comments as for Burton Street.	Please keep the colour scheme for these plazas elegant/neutral, to compliment the beautiful village environment of Kirribilli. No loud, bright colours like now, Burton Street plaza currently looks horrible, does not suit the area.
30	Lauren Gram 80 Alfred St MILSONS POINT	Option 1	Option 1	Option 1 is preferred due to accessibility and flexibility of the space. Option 2 steps limit accessibility for all users and uses	Prefer the higher quality finish and durability. Option 2 with dark bricks will be hotter and noisier.	Congratulations to council for committing to these spaces permanently.
31	Elizabeth Anne Hardy Kirribilli Ave KIRIBILLI	Option 1	Option 1	This temporary closure has been successful and well used by all residents. It stops traffic from entering Burton street and being dangerous for pedestrians. No steps should be installed so older residents and prams can use without fears of falling.	Do not know this area so cannot comment.	Kirribilli has become a very popular place for walkers and people from other areas to meet and so we need more friendly streets and footpaths wider and less cars and buses going through the area. Keep traffic to the Milsons Point side of the railway.
32	Sophie 2 1E Avenue Rd MOSMAN	Option 1	Option 1	The lack of steps makes for better accessibility for prams, wheelchairs, less mobile people etc. The permanent concrete benches provide permanent seating which adds to the atmosphere.	Paved looks nicer - couldn't understand any further difference between the two.	Both changes will be great!! :)
33	Jennifer Watson 23 Walker St LAVENDER BAY	Option 1	Option 1	The lighting is terrible. Lights wrapped around tree branches looks cheap	Please improve the lighting.	Please improve the lighting
34	Mark Griffiths 7 Northcliff St MILSONS POINT	Option 1	Option 1	Good idea to close street makes it more human	Good idea to have shared pathway. Make sure cars know this	N/A
35	Paul Rosenbrier Lavender St MILSONS POINT	Option 1	Option 1	N/A	N/A	N/A

Burton Street and Bligh Street - Permanent Closure and Design Concepts SUBMISSIONS SUMMARY ONLINE FEEDBACK FORM (4 October - 14 November 2022)						
No.	Name and Address	Burton St - preferred option	Bligh St - preferred option	Burton Street - Comments	Bligh Street - Comments	Other comments
36	L Davidson East Crescent St MCMAHONS POINT	Option 1	Option 2	Slopped walkway is preferable to steps	Option 2 more clearly defines the carriageway	N/A
37	James Mullan Shirley Road WOLLSTONECRAFT	Option 1	Option 1	Let's do it. Kirribilli has no obvious town/village centre and we need less space for cars, more for humans.	Adds to village amenity and helps the two awesome cafes.	N/A
38	Carmen Langley MILSONS POINT	Option 1	Option 1	N/A	N/A	N/A
39	James High Street NORTH SYDNEY	Option 2	Option 1	Option two is by far the superior option with clean lines, less clutter and better sight lines. Option one on the other hand looks outdated before it's even been built with more imposed, hard furnishing and less room for pedestrians to move through.	Higher quality, more uniform finish.	With respect to Burton street, please do not replicate what already exists. This is a good opportunity to declutter and create a flexible public space for people and not concrete columns in the middle of a path
40	Shruti Choudhary High Street NORTH SYDNEY	Option 2	Option 1	N/A	N/A	N/A
41	Abbie Hardy 1 Margaret Street NORTH SYDNEY	Option 1	Option 1	It made for a more community feel in the heart of Kirribilli without traffic	N/A	N/A

Burton Street and Bligh Street - Permanent Closure and Design Concepts SUBMISSIONS SUMMARY ONLINE FEEDBACK FORM (4 October - 14 November 2022)						
No.	Name and Address	Burton St - preferred option	Bligh St - preferred option	Burton Street - Comments	Bligh Street - Comments	Other comments
42	Kirsty Betar Carabella St KIRRIBILLI	Option 1	N/A	Option 1 is the definite choice as steps would encourage skateboarders, people sitting in the middle of the shared area and inaccessible for the elderly, person with a disability and families with prams.	I cant not see the material options available in order to make a choice	The permanent area in Burton Street also needs to section off the cafe and bakery business as without strong designated areas they spill into this common area making it difficult to pass through or sit in. Additionally they should not place their rubbish or store wine bottles and crates in the vicinity. I attach a photo of the stuff left outside the premises (and this is a photo with limited items, I have seem much more left here) and have witnessed groups of people at night, throwing bottles and heaters and crates and general rubbish all over this area. <a href="#">Link to image of rubbish and other items left at Burton Steet</a>
43	Robert Fryer Carabella Street KIRRIBILLI	Option 2	Option 1	The concept is more open and provides greater flexibility with seating. The step approach is more fitting with the topography of the street. I would suggest strongly that the Telstra phone box is removed	Option 1 is preferred as it has a better palette and will make the area flow better	Please remove the Telstra phone box irrespective of which final option is taken
44	Sharon Fryer Carabella Street KIRRIBILLI	Option 2	Option 1	Please, please, please, please, please, please remove the bloody stupid Telstra Phone Box!!!!!!!!!!!!	None	Just remove the Telstra Phone Box
45	Stafford Watts <sup>1</sup>	N/A	N/A	Only street lamps not tree and area lighting. It makes the place look cheap. Also I don't like either option. The council needs to do much better.	No coloured pavement.	Please replace the classic bench seating that was removed in Burton Street. More importantly the name and experience of the designer of the only two options.
46	Leonie Sheridan Jeffreys St KIRRIBILLI	Option 1	Option 2	Prefer the option without steps as they make for difficulties for prams, wheelchairs, people with disabilities etc	N/A	N/A

<sup>1</sup> Submission also made via email refer #2 Attachment B

Burton Street and Bligh Street - Permanent Closure and Design Concepts SUBMISSIONS SUMMARY ONLINE FEEDBACK FORM (4 October - 14 November 2022)						
No.	Name and Address	Burton St - preferred option	Bligh St - preferred option	Burton Street - Comments	Bligh Street - Comments	Other comments
47	Nicholas Conley 45 Glover St MOSMAN	Option 1	Option 1	1st one better second one bad for disabled people (Hugo Stewart)	1st one better	
48	Dr Alain Middleton AO Cliff St MILSONS POINT	Option 2	N/A	I am all for a permanent closure. It needs to be kept fairly open as in the winter/cloudy days can be sad/dreary. Perhaps the finished 'plaza' may need a discrete trimming (not removal) of some of the branch cover.	N/A	N/A
49	Leonard Khaw Carabella Street KIRIBILLI	Option 2	Option 1	N/A	N/A	N/A
50	Robin Low Willoughby St KIRIBILLI	N/A	N/A	Council has vandalised Kirribilli with the previous closure which, while good to have the street closure, is visually offensive. Now you are trying to put lipstick on a pig. You need to withdraw the plans and do a proper plan for Kirribilli.	Council has vandalised Kirribilli with the previous closure which, while good to have the street closure, is visually offensive. Now you are trying to put lipstick on a pig. You need to withdraw the plans and do a proper plan for Kirribilli.	Council must withdraw these plans and come up with a plan for the whole of Kirribilli. These areas are currently awful, because of Council's dreadful work and lack of consultation. However, Ennis Road and the tunnel are a disgrace and Broughton Street very tatty. Look at Kirribilli as a whole don't rush through a bandaid project to try and cover up the vandalism created by Council in Kirribilli. I don't prefer any of the options.
51	Ms Janice Sengupta Peel St KIRIBILLI	Option 2	Option 2	Good to see more aesthetic options than the temporary arrangement (why was money spent on unattractive painting of bricks in the first place?)	Higher quality treatment is always preferable.	N/A

Burton Street and Bligh Street - Permanent Closure and Design Concepts SUBMISSIONS SUMMARY ONLINE FEEDBACK FORM (4 October - 14 November 2022)						
No.	Name and Address	Burton St - preferred option	Bligh St - preferred option	Burton Street - Comments	Bligh Street - Comments	Other comments
52	Name and address withheld	N/A	N/A	The plan with steps should not be implemented as this is not accessible for wheelchairs, walkers or prams. The second plan has heavy fixed brick walls which reduce flexible use of the site. Shared bike access would be good.	Two-way bike route through here please. We have lost bicycle access with the closure of Burton and restriction of Bligh. Surely bicycle use should be encouraged and planned for.	The Burton street closure has been pleasant and the fairy lights are attractive. It has a little but not a lot of use. We have coped using other streets to access our home in Kirribilli by car. This is increasingly becoming very difficult though and council needs to factor this in when permitting building sites to close roads for cranes etc. The Bligh Street Shared Zone is not really used as such and just creates a hazard with pedestrians boldly walking in front of cars and bicycles. Local residents do need to be able to get in and out of the area. Council needs to be mindful that its closure of these streets benefits 2 businesses at most and impacts seriously on local residents.
53	Claire 10 Holbrook KIRRIBILLI	Option 1	Option 1	It's great. But should be flat for better accessibility. The steps in option two are not great for accessibility and ease	N/A	N/A
54	Duffy Krook Bligh St KIRRIBILLI	Option 1	Option 1	Closing Burton Street will provide an increase in amenity for the residents of Kirribilli. It will also make the use of the street safer for pedestrians.	I think the councils' ideas for the Bligh Street shared zone will increase the visual amenity of the area.	For the closure of Burton Street I would prefer it if the council will go with option 1. Having the sloped area would enable people with prams to negotiate this area more easily otherwise I fully support the permanent closure being proposed. The Bligh Street shared zone effectively already exists but putting in a traffic light would be a very good idea as when the plants on the pavement grow taller it becomes difficult to see if cars are coming.
55	John Saalfeld and Nina Saalfeld Upper Pitt St KIRRIBILLI	Option 1	N/A	We prefer Option1 which seems to have a level surface throughout rather than option2 which seems to have a stepped surface with different levels	we were not really able to determine the different surfaces being suggested.	N/A

Burton Street and Bligh Street - Permanent Closure and Design Concepts SUBMISSIONS SUMMARY ONLINE FEEDBACK FORM (4 October - 14 November 2022)						
No.	Name and Address	Burton St - preferred option	Bligh St - preferred option	Burton Street - Comments	Bligh Street - Comments	Other comments
56	Rob Remnant Carabella Street KIRRIBILLI	N/A	N/A	I am supportive of the permanent closure of Burton Street - but I am NOT supportive either of Option 1 or of Option 2, neither of which adequately reflect the extraordinary heritage; history and cultural significance of the Kirribilli Village Centre.	I am supportive of the Bligh Street shared zone - but feel strongly that the design elements must adequately reflect the extraordinary heritage; history and cultural significance of the Kirribilli Village Centre.	For the avoidance of any doubt whatsoever, I am NOT supportive of either Option 1 or 2 in respect of the Burton Street permanent closure. I would urge North Sydney Council to develop an Option 3 which reflects the UNIQUE history, heritage and cultural significance of Kirribilli.
57	James Reynolds Elamang Ave KIRRIBILLI	Option 1	Option 2	Option 2 is not suitable for the elderly that reside in Kirribilli	Separate road & path with different finishes to ensure drivers are not confused where to drive, especially having several eateries on the left.	This is a much better option to the ugly painted surface that is currently there. It looks so old and dirty now.
58	Rebecca Knights Broughton St KIRRIBILLI <sup>2</sup>	N/A	N/A	N/A	N/A	I am writing on behalf of Coco Chocolate which will be celebrating 20 years in business in 2024. We would love the Bligh st closure but this must include the removal of the 15 minute car space outside the store otherwise we continue to suffer from being the only shop in the whole street that has no seating space though constantly asked for by the locals we serve. This space is often now occupied by trucks that don't turn off their engines and fill our lovely store with fumes. If a large vehicle, we are then also hidden from our passing trade on our official Broughton st address. Now Kirribilli supermarket is closed due to Woolworths there is no need for a delivery spot in this location. Thank you for your consideration for us and our customers

Burton Street and Bligh Street - Permanent Closure and Design Concepts SUBMISSIONS SUMMARY ONLINE FEEDBACK FORM (4 October - 14 November 2022)						
No.	Name and Address	Burton St - preferred option	Bligh St - preferred option	Burton Street - Comments	Bligh Street - Comments	Other comments
59	Stephen Cahill Carabella St KIRRIBILLI	Option 1	Option 1	The amenity of the new layout would be enhanced by requiring the restaurant on the southern side to store all ancillary items off the plaza, which is not currently the case (e.g. empty food and other containers)	The amenity of the new layout would be enhanced by requiring the restaurant on the southern side to store all ancillary items off the street; currently milk crates and other items are stored on the street, adjacent to the electricity substation.	Making these changes permanent is an excellent move. It is to be hoped that they can be integrated into a larger community-driven process which recognises and builds upon the unique role of Kirribilli at a local, regional and national level. There is much to be done to enhance further the streetscape and the commercial environment.
60	Nicole Parker Carabella Street KIRRIBILLI	Option 1	Option 2	Option 1 provides seating which is for use independent to existing restaurant and cafe	N/A	N/A
61	Fran Hernon Burton Street KIRRIBILLI	N/A	N/A	Neither option addresses the desire of the community to reflect the history of Kirribilli and showcasing its special role and function	Neither option addresses the desire of the community to reflect the history and the role and function of Kirribilli. Both options miss the mark. We need an option 3	Both options should be discarded. A new Option 3 should be developed following the revised Character Statement and the Master Plan as it relates to Kirribilli.
62	Ilona Birtha High St NORTH SYDNEY	Option 1	Option 1	The greener the better	Keep it and develop it to be a unique place in Sydney	Beauty up and keep our mall. It's so pleasant to sit there eating our ice-cream and watching the busy Kirribilli life. The mall would extend the walking exercise distance from the Milsons village. Please keep it and give it more facilities
63	Gemma Cook Carabella Street KIRRIBILLI	Option 1	Option 1	It is a great idea.	It is a great idea.	N/A
64	Marcus Esum Peel Street KIRRIBILLI	Option 1	Option 1	the graded (rather than stepped) format is better as it allows people to sit in the area creating a shared space, as well as a continuation of the road grade up and down the street	N/A	N/A



Burton Street and Bligh Street - Permanent Closure and Design Concepts SUBMISSIONS SUMMARY ONLINE FEEDBACK FORM (4 October - 14 November 2022)						
No.	Name and Address	Burton St - preferred option	Bligh St - preferred option	Burton Street - Comments	Bligh Street - Comments	Other comments
65	Access & Inclusion Coordinator (North Sydney Council staff)	Option 1	N/A	Any new public domain upgrades should consider accessibility in the planning and where possible, promote inclusion and use for all. Access and inclusion principles should include street furniture, lighting and wayfinding	Any new public domain upgrades should consider accessibility in the planning and where possible, promote inclusion and use for all. Access and inclusion principles should include street furniture, lighting and wayfinding	N/A
66	Name and address withheld	Option 2	N/A	A more neutral colour palette that is sympathetic with the bridge is pleasing. The stepped option feels more open and conducive to promenading and exploring Broughton street shops	The toned down colour palette, paving and levelling of the road/kerb is a good outcome. Consistent neutral bollards and painting the electric blue planters to black is also more sympathetic to the bridge and the locality.	Re Option 1 and 2 of Bligh it was difficult to see any variance between the two images supplied. other than 2.4 AND 2.5 in the subheadings at the top right of the pages.
67	Kim Turner Carabella St KIRRIBILLI	Option 1	N/A	It's great. Love the seating. Hate the current colour palette but I see that is changing. Please get Morgan's to remove their rubbish from the street	N/A	It needs a regular jet clean - in particular the bakery and Morgan's - the pathways are filthy.
68	John Hancox Shirley Road WOLLSTONECRAFT	N/A	N/A	N/A	The speed limit of 40kmh on the shared zone is ridiculous and should be reduced to 10 kmh	The Traffic consultant's report concludes that Bligh Street partial closure satisfies as a Category 1 (40kmh) road. That is strictly correct but allows traffic to lawfully travel at a speed which is dangerous. The speed limit should be marked as 10 kmh regardless of Transport for NSW rules. Adequate warning signs for pedestrians on Broughton Street should also be made prominent by placing them at waist level where they are more likely to be seen as sight lines are closer to ground.

Burton Street and Bligh Street - Permanent Closure and Design Concepts SUBMISSIONS SUMMARY ONLINE FEEDBACK FORM (4 October - 14 November 2022)						
No.	Name and Address	Burton St - preferred option	Bligh St - preferred option	Burton Street - Comments	Bligh Street - Comments	Other comments
69	Jonathan Ward Gadigal Avenue WATERLOO	Option 2	Option 1	Work should include higher pedestrian priority and amenity when crossing Broughton St	N/A	consider improving pedestrian amenity on Ennis rd. between station entrance and burton. It can often get quite crowded. moving the vehicle pickup/drop off further along Ennis road from the station entrance would be the way to do it
70	Hilary Hatfield Carabella Street KIRRIBILLI <sup>3</sup>	N/A	N/A	This is a fantastic step and I am fully in favour of Burton Street being permanently closed.	Yes a shared zone is a very good idea.	The Burton Street plaza options do not meet many of the resident's wishes. The proposal to have different levels is ridiculous. A flat, even though it will slope, plaza is the plan we should work on with greater input from residents and retailers who will be using it and will be most affected. Don't let us rush this concept through Council without having a thoroughly workable plan agreed to by the community. We want more involvement and participation i.e. the words Council use are INFORM and CONSULT with as this stage seems to be that we as residents are TOLD of decisions made.
71	Name and address withheld	Option 1	Option 1	the closure must permit bicycles to filter through at low speed.	closure would be a better option.	N/A
72	Kim Turner Carabella st KIRRIBILLI	Option 1	Option 1	N/A	Please keep curbs - a number of children and tourists use the area and the volume of them cars is very dangerous	Please ensure Morgan's don't leave their rubbish in the area
73	Derek Berents Holbrook Ave KIRRIBILLI	N/A	N/A	None of the options- need a new option 3	Look to have a uniquely Kirribilli heritage history and culture	Kirribilli is an iconic village and the icon a classic nature needs to be reflected in the design palettes proposed for the upgrade

<sup>3</sup> Submission also made during online information session refer to #1 (Attachment D)

Burton Street and Bligh Street - Permanent Closure and Design Concepts SUBMISSIONS SUMMARY ONLINE FEEDBACK FORM (4 October - 14 November 2022)						
No.	Name and Address	Burton St - preferred option	Bligh St - preferred option	Burton Street - Comments	Bligh Street - Comments	Other comments
74	Jon Lesquereux High Street NORTH SYDNEY	N/A	N/A	I am not in support of either option 1 or option 2 but do support submissions made by the Milsons Percent Community Group. I would like a third option considered which more fully reflects Kirribilli's culture and history	I am not in support of either option 1 or option 2 but do support submissions made by the Milsons Percent Community Group. I would like a third option considered which more fully reflects Kirribilli's culture and history	I am not in support of either option 1 or option 2 but do support submissions made by the Milsons Percent Community Group. I would like a third option considered which more fully reflects Kirribilli's culture and history
75	Minji Hall 67 Carabella St KIRIBILLI	Option 1	Option 1	Pram access and disability access so important	N/A	N/A
76	Stephen William Cavanagh Broughton Street KIRIBILLI	N/A	N/A	I understand that there is a 3rd option, namely to pause and allow for consideration of yet another proposal to be developed which is aimed to better reflect the history and uniqueness of Kirribilli	My vote is for the 3rd option- to pause for a third proposal	If the village atmosphere and street scape of Kirribilli is to be respected and preserved then traffic use and congestion needs to be reduced significantly. Buses (in particular those "Not in Service") need to find alternative routes and school pick up and drop off needs to be diverted or halted. The village has become a thoroughfare for those who do not live here.
77	Jennifer Jean Cavanagh Broughton St KIRIBILLI	N/A	N/A	I totally approve with the closure of Burton St. There are issues that need considering, the decoration is very tacky and the cleanliness of the area should be addressed.	This area is very narrow and can only be a shared zone for access to Broughton St.	I agree with the need to consider an option 3! and I certainly hope that these aspects of streetscape are part of a defined masterplan!!! Ennis st should be a pivotal area of any masterplan and development.
78	Rosalie Windust Waruda St KIRIBILLI	Option 1	Option 2	Good idea. We have lived with it for a while and it seems to work. I am happy you are changing the Pavers from the multi coloured ones.	Not a big fan of shared areas. But understand the cars need some access.	N/A
79	Daniel Murphy Broughton Street KIRIBILLI	Option 2	Option 1	Please hurry up and get on with it. It is a fantastic and worthy initiative but it's taken far too long to deliver such a seemingly simple project.	N/A	N/A

Burton Street and Bligh Street - Permanent Closure and Design Concepts SUBMISSIONS SUMMARY ONLINE FEEDBACK FORM (4 October - 14 November 2022)						
No.	Name and Address	Burton St - preferred option	Bligh St - preferred option	Burton Street - Comments	Bligh Street - Comments	Other comments
80	Elizabeth Collison Fitzroy Street KIRRIBILLI	Option 1	Option 1	Concrete seating separating the cafe areas and public areas is to be preferred. Otherwise the cafes can encroach on walking space. It is also better without the tripping hazard of steps.	I like the tree-planting idea of option 1.	N/A
81	Mark Carabella Street KIRRIBILLI	Option 1	Option 1	As a young family, and knowing many other families in our neighbourhood, Option one layout provides a more practical use of space overall for the community. The centre decline interspersed with cylindrical seating is great for customers and pedestrians.	It's very important to offer the community a high quality end product and finish. As a multi-use area with traffic, customers and pedestrians, durability and elegance must work together for the best outcome.	The current test layout for Burton Street has proven to be a hit with tourists, families, locals and customers. The layout has created a 'vibe' that offers a warm and friendly space to meet in the village and decide from there, where to eat, shop or go. It is also a great place to simply catch up with friends for a coffee and chat.
82	Haggai Bocman Hollywood Ave BONDI JUNCTION	Option 1	Option 1	I support the street closure to vehicles and opening to people	I support the street closure to vehicles and opening to people	I used the safe space created by the street closure for my lunch break
83	Maree Carabella Street KIRRIBILLI	Option 1	Option 1	This design is much better aligned to cater for ALL, not just cafe customers. The central seating offers a place for young and old. I am in my 70's and find that we can sit and catch up with grandchildren in the current mall. Please get on with the job!	Option one is the better choice as it provides durability with better aesthetic.	This plan has been going on for a long time. You can never please everyone. Overall option one ticks all the boxes. Please just get the job done! Thank you.
84	Stephanie Price Elamang Ave KIRRIBILLI	Option 1	Option 1	N/A	N/A	N/A
85	Dennis Carabella St KIRRIBILLI	Option 1	Option 1	Option one is fabulous, Sophisticated and sustainable Just do it!	Just do it!	Stop unnecessary delays and get on with it! No option 3
86	Bamfords Broughton St KIRRIBILLI	Option 1	Option 1	Looks good - lifts the atmosphere of the village. Friendly and fun for all age groups	Great space for a shared zone and outdoor dining Would be good to close to traffic	Just do it and stop all the delays

Burton Street and Bligh Street - Permanent Closure and Design Concepts SUBMISSIONS SUMMARY ONLINE FEEDBACK FORM (4 October - 14 November 2022)						
No.	Name and Address	Burton St - preferred option	Bligh St - preferred option	Burton Street - Comments	Bligh Street - Comments	Other comments
87	Erika Remnant Carabella St KIRRIBILLI	N/A	N/A	I do not support either Option 1 or Option 2. I believe the residents of Kirribilli should be consulted in greater depth.	I do not support either Option 1 or Option 2. I believe the residents of Kirribilli should be consulted in greater depth.	I do not support either Option 1 or Option 2. I believe the residents of Kirribilli should be consulted in greater depth.
88	Kevin Brough Willoughby St KIRRIBILLI	N/A	N/A	I don't like either option and I think we need to revisit the design in keeping with our local heritage plan	I don't like either option and I think this needs to be revisited in consultation with the community. This is not in keeping with the heritage plans for Kirribilli	
89	Michael Bracka Broughton St KIRRIBILLI	N/A	N/A	Neither - please take the time to articulate a clear Character Statement that embraces the history, character and feature of KVC	Neither - same comment as previous	Kirribilli Village Centre is a Special Place and must be treated as such - it is unique within the broader LGA area. KVC is linked strongly to the CBD Rocks area by the SHB and the vision and Character Statement must recognise this. Any investment in infrastructure must be made in the context of this special Character. I would ask Council to take the time to truly consider to ensure the investments made live for generations. I view strongly the need to articulate a clear plan and strategy for Burton Street, the Underpass and Ennis Road in a co-ordinated manner embracing Character, Ambience and use of space to create a KVC nucleus.
90	Sarah Reed Willoughby St KIRRIBILLI	N/A	N/A	I request a third option - that neither are appropriate for our historically significant suburb	I request a third option - that neither option is acceptable. Neither reflect the heritage and conservation suburb that is Kirribilli	Please mark me as in support of 'neither option.' I would like Council to revisit the BRIEF, with Kirribilli's historical significance and importance as custodian of the harbour bridge, Admiralty House and Kirribilli House. In my opinion, an option that links design elements of Kirribilli's historical past would be preferable to the two options proposed.

Burton Street and Bligh Street - Permanent Closure and Design Concepts SUBMISSIONS SUMMARY ONLINE FEEDBACK FORM (4 October - 14 November 2022)						
No.	Name and Address	Burton St - preferred option	Bligh St - preferred option	Burton Street - Comments	Bligh Street - Comments	Other comments
91	Kate Willesee Holbrook Ave KIRRIBILLI	Option 2	Option 1	N/A	N/A	N/A
92	Roddy Bligh St KIRRIBILLI	Option 1	Option 1	Option 1 looks great for Bligh St where I work. Slowing traffic down is always a good idea	N/A	N/A
93	Eric Bligh St KIRRIBILLI	Option 1	Option 1	Great family friendly space Love the proposed finishes and the lights	Get on and finish the project asap. It will benefit small businesses as well as the locals. Close the street on weekends for extra outdoor dining	Stop the politics and get on and complete the project asap
94	Florence Kirribilli St KIRRIBILLI	Option 1	Option 1	Looks good. Great sustainable finishes. Fun for all ages. Helps small businesses. Paint the blue planters black	Always good to slow down traffic and provide outdoor spaces for locals. Good for our local residents and small	Stop consulting and finish the project
95	Annie Banks Kirribilli Ave KIRRIBILLI	Option 1	Option 1	Great design	Good idea to slow down traffic Lovely design	Proceed asap
96	Ashleigh Eislers McDougall St KIRRIBILLI	Option 1	Option 1	It doesn't impact me as I never drive there, I'm sure after this long it would be widely accepted by others now.	I love it. Creates a warm, social and happy vibe in the neighbourhood. I particularly love seeing kids/families enjoy and ice cream there. My dog, baby and I often sit there while hubby pops into Woolworths	It's really important to me for no steps to ensure accessibility for wheelchairs and prams. It would be good to at least have the concrete circles cleaned. I feel like the consultation has taken a long time, would be good to see this underway / done.
97	Thanks Burton St KIRRIBILLI	Option 1	Option 1	N/A	N/A	N/A
98	Cara Sebastian Burton St KIRRIBILLI	Option 1	Option 1	N/A	N/A	N/A
99	Yuli Duque Burton St KIRRIBILLI	Option 1	Option 1	Good for small businesses	N/A	N/A

Burton Street and Bligh Street - Permanent Closure and Design Concepts SUBMISSIONS SUMMARY ONLINE FEEDBACK FORM (4 October - 14 November 2022)						
No.	Name and Address	Burton St - preferred option	Bligh St - preferred option	Burton Street - Comments	Bligh Street - Comments	Other comments
100	Kelly Sanders Upper Pitt St KIRRIBILLI	Option 1	Option 1	N/A	N/A	Love the Jacaranda
101	Julia Laverty Fitzroy Street KIRRIBILLI	Option 1	Option 1	Important to have wheelchair and pram access in shared zone	Please put 2 trees on church side between planters to match Burton St and create an avenue. Otherwise it's just another brick wall view from restaurant seating. There's room if shared zone footpath and road is level	Key to landscaping is repetition and consistency. Please upgrade lighting and fencing in Fitzroy St also
102	Donna Broughton St KIRRIBILLI	Option 1	Option 1	Love Jacaranda	Safe for pedestrians	Just get it done
103	Stephen Ellis Fitzroy St KIRRIBILLI	Option 2	Option 2	N/A	N/A	N/A
104	Brianna King Waruda Street KIRRIBILLI	N/A	Option 1	N/A	N/A	N/A
105	Alistair Shop 16/1 Broughton St KIRRIBILLI	Option 1	Option 1	Great as a community meeting space. Love the Jacarandas. Love the proposed casual contemporary spaces. Cement benches are practical, sustainable? And easy to clean. Keep trees in pots - paint them black.	Great idea and plans.	Hurry up and do it! Empty rubbish bins more frequently
106	Elizabeth Pond Upper Pitt St KIRRIBILLI	Option 1	Option 1	Fabulous addition to our village More Jacarandas. Love the wooden bench seats. Paint pots black or dark charcoal and keep the trees.	Great initiative to slow down traffic. Close the street altogether and make people the priority- not cars.	Stop endless consultation and get it done. Fitzroy St needs attention Keep bins clean and empty frequently
107	Ms Karlsson Upper Pitt St KIRRIBILLI	Option 1	Option 1	The plaza draws locals together	Great to slow down cars and have more outdoor dining	Start asap

Burton Street and Bligh Street - Permanent Closure and Design Concepts SUBMISSIONS SUMMARY ONLINE FEEDBACK FORM (4 October - 14 November 2022)						
No.	Name and Address	Burton St - preferred option	Bligh St - preferred option	Burton Street - Comments	Bligh Street - Comments	Other comments
108	Carol Lee Carabella Street KIRRIBILLI	N/A	N/A	Neither option is preferable. A design in keeping with the heritage of the area is preferable	Neither option is desirable	The 3rd option raised at the Streetscape meeting on 18 October is my preference
109	Steven Kamsler Plunkett St KIRRIBILLI	Option 1	Option 1	Community gathering space	Great to slow. Safe for kids	Makes village peaceful
110	Mrs Hunter Broughton St KIRRIBILLI	Option 1	Option 1	Stop wasting time and money by over consulting. Just get on with option 1 asap I like the idea of extra jacarandas. I love the lights. Maybe repaint the blue pots black for a more contemporary style	Super idea to slow down the traffic. Proceed with option 1 Asap	Empty the rubbish bins more often...especially on weekends
111	Chrissy Porter Carabella St KIRRIBILLI	N/A	N/A	N/A	N/A	I feel very strongly that the unique heritage and rich history of Kirribilli needs to be respected and reflected in the remodelling of the Burton Street Plaza. It is a place that the community wants to feel proud of. Neither of the two design options presented deliver on these objectives. The proposed designs are the antithesis of what, we the community, would like to see.
112	Peter Broughton St KIRRIBILLI	Option 1	Option 1	Has enhanced the village feel of Kirribilli. Lovely to see children playing in the plaza. Love the night lights, More Jacarandas please	Nice to prioritise pedestrians over cars.	JUST DO IT!!
113	Christine Ryan Carabella St KIRRIBILLI	Option 1	Option 1	Don't let restaurants take over the plaza area. Keep for locals and visitors to casually relax without having to spend money.	N/A	Safer
114	Tony Morgan Burton St Broughton St KIRRIBILLI	Option 1	N/A	Need to be covered as it rains non stop ,easy to clean tiles same as Lane Cove plaza	Nothing need to be done unless Burton st is done probably	N/A



Burton Street and Bligh Street - Permanent Closure and Design Concepts SUBMISSIONS SUMMARY ONLINE FEEDBACK FORM (4 October - 14 November 2022)						
No.	Name and Address	Burton St - preferred option	Bligh St - preferred option	Burton Street - Comments	Bligh Street - Comments	Other comments
115	Kathy Shop 1/34 Burton St KIRRIBILLI	Option 1	Option 1	Like the trees get rid of blue pots or repaint	Good idea	Wooden benches good for casual coffees.
116	Jacque Peel St KIRRIBILLI	Option 1	Option 1	Safer not having stairs. Casual space for all - locals and visitors	Good to slow down traffic	Love the trees love the jacarandas
117	Susan Fryda Blackwell Walker St NORTH SYDNEY	Option 1	Option 1	The temporary closure worked well, so make it permanent. It adds to the liveability of the community.	Option 1 has a smooth path thus facilitating the use of wheelchairs, walkers, crutches, walking sticks, etc used by the mature and infirm local residents and visitors. Also, the raised concrete benches allow for seating if you are not a customer.	N/A
118	Desley Shop 1/21 Broughton St KIRRIBILLI	Option 1	Option 1	Option 1 is very suitable for our village	Always good to slow down the traffic	Paint blue planters a quieter colour
119	Laura McKye St WAVERTON	Option 1	Option 2	Pathway being level is more accessible	Having the road a different finish makes a clearer boundary from a safety perspective	N/A
120	Carole Burns Alfred St South MILSONS POINT	Option 1	Option 1	Plaza area is being well used by pedestrians. Make the temporary closure permanent	Suggest closing Bligh St, rather than shared zone. Main traffic is from school drop-offs and pick-ups. Parents can access school from the street behind.	Kirribilli is a busy area- cars, buses, trucks along Broughton St, so any increase in pedestrian friendly areas would be very welcome.
121	Estelle Alfred St S MILSONS POINT	Option 1	Option 1	N/A	N/A	N/A
122	Amy Roberts Broughton St KIRRIBILLI	Option 2	Option 2	N/A	N/A	N/A

Burton Street and Bligh Street - Permanent Closure and Design Concepts SUBMISSIONS SUMMARY ONLINE FEEDBACK FORM (4 October - 14 November 2022)						
No.	Name and Address	Burton St - preferred option	Bligh St - preferred option	Burton Street - Comments	Bligh Street - Comments	Other comments
123	Thomas Kelly Carabella St KIRRIBILLI	N/A	N/A	Neither Option is acceptable - Features and function are inconsistent with the Character of Kirribilli and raise serious pedestrian safety and disability access issues.	Neither Option is acceptable - see previous comment.	It is time to take a more strategic, long-term view! We should formalize a timetable and funding for the implementation of a new Kirribilli Masterplan that will turn the creeping decay of a great location into the Heritage Home of so much Sydney and Australian history. We can provide a sense of pride and admiration for generations to come. Pause the construction on Burton and Bligh until we can jointly design and implement a Kirribilli Village that will garner a sense of pride for all stakeholders.
124	Stacey Carabella St KIRRIBILLI	Option 2	Option 1	I love it. It creates a lovely space to spend time outside in the village	Really like it and I love the colours, i think they should stay	Burton street I prefer option 2 but I would like more plants included. The existing planter boxes/ trees are nice
125	Susan Effeney Elamang Ave KIRRIBILLI	Option 1	Option 1	NO STEPPED LEVELS PLEASE! They are inconsiderate of people with impaired mobility. Option 1 will also give free seating to people not patronising the restaurants. Without seating barriers, the restaurants will further encroach the walkway	Good idea. Can't see much difference between options 1 and 2	As little concrete as possible please! Do not indulge builders' fetish for concrete. More trees, given that North Sydney will not have any left
126	Sue Cooper Peel St KIRRIBILLI Larool Cres CASTLE HILL	Option 1	Option 1	N/A	N/A	A relaxing place to be.
127	H L Jarman Broughton St KIRRIBILLI	Option 1	Option 1	Retain existing fairy lights (potentially add additional), retain existing greenery & trees & add 2 new Jacaranda trees. This will provide the best aesthetic for the village.	N/A	N/A

Burton Street and Bligh Street - Permanent Closure and Design Concepts SUBMISSIONS SUMMARY ONLINE FEEDBACK FORM (4 October - 14 November 2022)						
No.	Name and Address	Burton St - preferred option	Bligh St - preferred option	Burton Street - Comments	Bligh Street - Comments	Other comments
128	Josephine Rozman Elamang Ave KIRIBILLI	Option 1	N/A	Option 1 provides more seating. It separates cafe/restaurant diners from pedestrians & their dogs. It is safer as the stepped down sections in the alternative are a falling hazard - as people talk and walk, not always looking at the ground ahead.	N/A	N/A
129	Neil Krisalam Broughton St KIRIBILLI	Option 1	Option 1	Jacarandas are wonderful. More nature and more public space is very welcome. Kirribilli should have unique identity that attracts tourists and new businesses and residents.	N/A	Hurry and get it done. Kirribilli has so much potential to become a tourist/business hub. We have so much natural beauty and great small businesses and we need to embrace that. Keep the bins clean. Would love live music venues/concerts etc.
130	Ian Richer Burton St KIRIBILLI	N/A	N/A	neither option reflects the history nor heritage issues of the area	does not blend with the Burton Street design nor reflect the history or the special heritage of the iconic special place	Develop an option 3 to more reflect the design for the special place
131	George Gallagher French St MCMAHONS POINT	Option 1	Option 2	Neither Option is ideal as drawn. Option 1 with the sloping surface is preferred, but without the large and wide permanent bench seats that separate the cafe patrons from the central zone visitors. Option 1, without the wide bench seat would be good.	The central zone is trafficked by cars, albeit slow moving. The smaller module darker paving in central zone would be more suitable, operationally, and as a visual clue to pedestrians that there are likely to be vehicles entering.	N/A
132	Timothy Ronald Elamang Ave KIRIBILLI	Option 1	Option 2	N/A	N/A	N/A
133	Karen Guildford Munro St MCMAHONS POINT	Option 1	Option 1	N/A	N/A	Option 1 without the stepped platforms is more accessible and inclusive.

Burton Street and Bligh Street - Permanent Closure and Design Concepts SUBMISSIONS SUMMARY ONLINE FEEDBACK FORM (4 October - 14 November 2022)						
No.	Name and Address	Burton St - preferred option	Bligh St - preferred option	Burton Street - Comments	Bligh Street - Comments	Other comments
134	Louise Tang Elamang Ave KIRRIBILLI	Option 1	Option 1	The design has been well considered and will be an ideal beginning to the beautification of Kirribilli.	This is an excellent idea. I hope to see this area eventually also be a permanent ( no vehicle) area	With so many differing opinions, Discussion with no action will continue. We need to begin with the Burton Street Plaza. This will certainly then magnify the need to improve the image of remainder of Broughton St. Kirribilli.
135	Michael Tang Elamang Ave KIRRIBILLI	Option 1	Option 1	The designers have presented an excellent plan. Please let's begin with no further discussion.	This is an excellent idea.	N/A
136	Christopher Tang 19 Waruda St KIRRIBILLI	Option 1	Option 1	An excellent plan has been submitted. This will certainly assist local businesses. Please let's begin.	This is another great idea.	N/A
137	Elena Vincenza Cavallaro Carabella St KIRRIBILLI	Option 1	Option 1	Leave as it is with some minor low cost changes. Tree Pots to be relocated spread away from existing street trees. Remove large cement tables/seats these are unsightly and need maintenance to keep clean. Leave side wooden side benches. Repaint blue tree	Leave as is, add more tree pots if anything tree pots to be coloured to suit the existing colour scheme.	Do not waste council money. Only minor changes need to be made. Get rid of cement blocks repaint pavers in a neutral colour ie green or grey.
138	Olivia Mutton Ben Boyd Rd NEUTRAL BAY	Option 1	Option 1	Discussion has dragged on for too long. The design which has been presented looks excellent. Please begin this long overdue project	An excellent idea which should also be implemented quickly	N/A
139	Jessica Watson Munro Waruda St. KIRRIBILLI	Option 1	Option 1	The permanent closure of Burton St. should begin. The design is excellent. Further discussion will only delay work.	An excellent plan.	Kirribilli is a tourist destination. It desperately needs to be upgraded in many areas

Burton Street and Bligh Street - Permanent Closure and Design Concepts SUBMISSIONS SUMMARY ONLINE FEEDBACK FORM (4 October - 14 November 2022)						
No.	Name and Address	Burton St - preferred option	Bligh St - preferred option	Burton Street - Comments	Bligh Street - Comments	Other comments
140	Charlene Wortley Ridge St NORTH SYDNEY	Option 1	Option 1	Burton street option 1 provides more accessibility for pushchairs, wheelchairs and people with disabilities or vulnerable road users. Adding steps in the central walk way provides additional safety hazards for pedestrians particularly the vulnerable.	N/A	N/A
141	Noela Woods Upper Pitt St KIRRIBILLI	Option 1	Option 1	Please start this project. Discussion has continued for too long	Definitely should be done	N/A
142	Mario Provini Upper Pitt St KIRRIBILLI	Option 1	Option 1	We have been hearing about this for too long. Please start the project	This is a wonderful idea	N/A
143	Janelle Berents Holbrook Ave KIRRIBILLI	N/A	N/A	Neither option reflects the "ICONIC" Heritage, Historic or Cultural feel of this small community. Despite public declaration of Council's huge regard for the "Iconic" status of Kirribilli in the Masterplan. Option 3 needed.	Streetscape furniture, lighting paving are standard LGA rollout. Kirribilli requires a heritage feel to its design NOT URBAN, COMMERCIAL. It is not St Leonards or Neutral Neutral Bay.	Please provide an OPTION3 without Terraces (Opt2) and bulky off-form concrete structures(Opt1) which has been shown in the temporary option to mould and become filthy very quickly. It provides no backrest and is cold and uncomfortable for all. A single paver. The plazas require elegant simplicity and restraint.
144	Malcolm Heath Carabella St KIRRIBILLI	Option 1	Option 1	N/A	N/A	The jacarandas are an excellent idea, as Kirribilli has so many of these beautiful trees. I question their location, however, as in a high flow pedestrian area, when the flowers fall to the ground they are extremely slippery underfoot, and difficult to sweep up. This could be a significant slip and fall hazard over the blooming weeks of November.

Burton Street and Bligh Street - Permanent Closure and Design Concepts SUBMISSIONS SUMMARY ONLINE FEEDBACK FORM (4 October - 14 November 2022)						
No.	Name and Address	Burton St - preferred option	Bligh St - preferred option	Burton Street - Comments	Bligh Street - Comments	Other comments
145	Mrs Irene Hirst Elamang Ave KIRRIBILLI	N/A	Option 2	A third option needs to be found	N/A	Comfortable and adequate seating suitable for senior citizens and definitely no steps. I think that there should be a third option as neither Option 1 or two are favourable. The public seating in option 1 is inadequate. There are many senior citizens in Kirribilli that would appreciate a better seat than a concrete bollard to sit on Option 2 is not favoured again from a senior citizen's viewpoint because steps are a trip hazard and would cause falls.
146	Diana Watson Holbrook Ave KIRRIBILLI	N/A	N/A	No	No	N/A
147	W J Watson Holbrook Ave KIRRIBILLI	N/A	N/A	No	No	N/A
148	Annabel King Holbrook Ave KIRRIBILLI	N/A	N/A	Agree to Burton Street being closed however options appear very commercial and look more like Crows Nest than lovely village of Kirribilli. Steps are inappropriate and not DDA compliant for elderly, less mobile people, prams, shopping trolleys, scooters.	Very little traffic comes through Bligh so feel that contrast paving is enough to identify shared zone. But the blue is hideous - or was that to cater to St Alo's perhaps.	Surely another boutique bespoke tailored sensitive option could be optioned to promote safety, inclusivity, aesthetic, heritage
149	Elena Huang Peel St KIRRIBILLI	Option 1	Option 1	N/A	N/A	Option 1
150	Robin Baird Carabella St KIRRIBILLI	Option 1	Option 1	I support the permanent closure	I support the shared zone in Bligh St	N/A
151	Corina Alfred St MILSONS POINT	Option 1	Option 2	N/A	N/A	N/A

Burton Street and Bligh Street - Permanent Closure and Design Concepts SUBMISSIONS SUMMARY ONLINE FEEDBACK FORM (4 October - 14 November 2022)						
No.	Name and Address	Burton St - preferred option	Bligh St - preferred option	Burton Street - Comments	Bligh Street - Comments	Other comments
152	Name and address withheld	Option 1	Option 1	No Comment	No Comment	No Comment
153	Patricia Schiller Holbrook KIRRIBILLI	N/A	N/A	Change the current design colour and design streetscape which is inappropriate for heritage area.	as above.	Council to provide an option 3 which addresses concerns of residents. Current streetscape is not a reflection of our neighbourhood. It is NOT North Sydney, St Leonards, Neutral Bay.
154	Elaine Wziontek Kiara Cl NORTH SYDNEY	Option 1	Option 1	N/A	This is a wonderful addition to our area.	It enhances the village feel
155	Judith Cahill Carabella St KIRRIBILLI	N/A	N/A	I agree with the Burton St closure but do not think the streetscape design is appropriate for Kirribilli	I agree with the one but do not think the streetscape design is appropriate for Kirribilli. The current planting arrangement on the corner of Bligh and Broughton Sts outside the church block driver visibility - standard roses are too high and dense.	Neither proposal is supported
156	Tony Stanley, Address withheld	N/A	N/A	I support the Burton Street closure	I support the Bligh Street Shared Zone	It would be good to see a 30km/h default speed limit in all the surrounding streets to improve the overall feel of the area and encourage sustainable forms of transport, rather than cars.

Burton Street and Bligh Street - Permanent Closure and Design Concepts SUBMISSIONS SUMMARY ONLINE FEEDBACK FORM (4 October - 14 November 2022)						
No.	Name and Address	Burton St - preferred option	Bligh St - preferred option	Burton Street - Comments	Bligh Street - Comments	Other comments
157	Vilma Bowers Elamang Ave KIRRIBILLI	N/A	N/A	I am not in favour of option 1 or 2 and feel that neither is suitable. After all the community consultation, information sessions, workshop there should be a 3rd option which reflects the community's view.	I am not in favour of Option 1 or 2 and feel that a third option should be drawn up as in my comments above.	The existing temporary trial for both Burton and Bligh Street has worked well in that it has shown that the bright trendy colours of Burton Street Plaza does not work, is unpopular with the residents and is out of place with the heritage listed Sydney Harbour Bridge. A new design should have an historical influence given that the early settlement of the area dates back to the 1790's. It is the perfect opportunity for a new design to tie Burton Street Plaza with the heritage listed Sydney Harbour Bridge. It is imperative in a third design, that there should be provided comfortable seating, no round or square cement blocks or hard wooden benches. It should be an area which is inviting, attractive and functional; where friends can meet up and where



Burton Street and Bligh Street - Permanent Closure and Design Concepts SUBMISSIONS SUMMARY ONLINE FEEDBACK FORM (4 October - 14 November 2022)						
No.	Name and Address	Burton St - preferred option	Bligh St - preferred option	Burton Street - Comments	Bligh Street - Comments	Other comments
157	<i>Continued</i>					<p>residents/tourists must be able to bring coffee/food and not feel obliged to buy from existing cafes It must also be disable friendly. To have Jacaranda Trees in this area would be totally unsuitable. With little rain the flowers fall off and are a terrible trip hazard. Residents in the McDougall Street and surrounding Streets are only too mindful of this.</p> <p>It is important that there should be a number of attractively designed pest and bird proof stainless steel garbage receptacles. At the moment the area it is dirty and untidy and does not give a good impression of Kirribilli. On walking through yesterday I noticed a terrible smell near the corner of Burton and Humphrey Place. This is the perfect and probably last opportunity to get this area right and make it a place where people like to come. So many</p> <p>tourists come to visit, the Plaza should make an impression and be a place where they would like to return.</p> <p>I suggest that the blue planter boxes in Burton Street Plaza be reused on a temporary basis, painted black and placed</p>

Burton Street and Bligh Street - Permanent Closure and Design Concepts SUBMISSIONS SUMMARY ONLINE FEEDBACK FORM (4 October - 14 November 2022)						
No.	Name and Address	Burton St - preferred option	Bligh St - preferred option	Burton Street - Comments	Bligh Street - Comments	Other comments
157	<i>Continued</i>					opposite the entrance to the Station, which would make the entrance to Kirribilli more welcoming and cost effective. Would it be possible for the Council to adopt a standard for street furniture for the cafes and restaurants similar to what we see in the Rocks. The cafe furniture around Kirribilli is such a mish mash...
158	Karina Peel St KIRIBILLI	Option 1	Option 1	N/A	Op 1 is more inclusive. Provides people w/disabilities and those w/ prams the opportunity to enjoy the space without worrying about steps/stairs. More people could enjoy the sitting areas not only people paying for table service.	We need more free sitting and "hunting" out options as per option 1 so families could have take away coffee, ice cream and still enjoy the area
159	Joanne Scanlan Holbrook Ave KIRIBILLI	N/A	N/A	I am concerned both designs do not consider their heritage and feel of Kirribilli. I am wondering if a Heritage consultant has been involved in these designs. This does not seem in keeping with Kirribilli.	Option 2 with the steps does not seem good for prams, walkers and people with disability. Concrete blocks as chairs is not good for elderly nor the heritage of the area.	I like the concept of creating better community spaces but would like these to consider the heritage aspects of Kirribilli village and it's uniqueness.
160	R Porter Carabella Street KIRIBILLI	N/A	Option 1	The introduction of modern and stainless steel metal to the area is not in keeping with Kirribilli's historic and heritage 'feel'. The designers just don't get it or are poorly briefed. The modern seats are just that, modern, not good enough.	The car space outside Coco Chocolate needs to be removed to extend the community space to include that area	N/A
161	Nicole Oldfield Upper Pitt St KIRIBILLI	N/A	N/A	Please can u look at option 3 put forward by locals	Seems to work ok	Just please consider option 3

Burton Street and Bligh Street - Permanent Closure and Design Concepts SUBMISSIONS SUMMARY ONLINE FEEDBACK FORM (4 October - 14 November 2022)						
No.	Name and Address	Burton St - preferred option	Bligh St - preferred option	Burton Street - Comments	Bligh Street - Comments	Other comments
162	Lizzie Carabella St KIRRIBILLI	Option 1	Option 1	Locals love our plaza. It's a happy meeting place. More Jacarandas in the village please. I like the casual seating areas - maybe some cushions to sit on would be a good idea. The community have had their say on the Kirribilli Masterplan....Just get on with	Slowing down traffic always a winner	Be like Nike Just do it!
163	Carol Elamang St KIRRIBILLI	Option 1	Option 1	Burton St Plaza is the best thing to happen to Kirribilli	Will make Bligh St more relaxed for outdoor dining. It would be good to close the street in summertime for more outdoor dining. Please stop wasting time and money and get the work done. Fitzroy St needs improvements as well	Please stop wasting time and money and get the work done. Fitzroy St needs improvements as well
164	Simone Harding Holbrook Ave KIRRIBILLI	N/A	N/A	N/A	N/A	i do not agree with either above plans
165	Frank Procopio Fitzroy St KIRRIBILLI	Option 1	Option 1	All locals love our plaza. Paint the blue pots charcoal or black. We need street lights that work properly and don't break down. More Jacarandas please	Will be pleasant for outdoor dining. Why not close the street to traffic.	Mow Jacarandas. Maybe replace Robinias in Fitzroy with Jacarandas
166	James Linton Alfred St MILSONS POINT	Option 1	Option 1	There has been no noticeable impact to my driving in the area.	A fantastic initiative by our old mayor Jilly. If only our current mayor and her block of six would be as progressive as the old council....	N/A

Burton Street and Bligh Street - Permanent Closure and Design Concepts SUBMISSIONS SUMMARY ONLINE FEEDBACK FORM (4 October - 14 November 2022)						
No.	Name and Address	Burton St - preferred option	Bligh St - preferred option	Burton Street - Comments	Bligh Street - Comments	Other comments
167	Julia KIRRIBILLI	N/A	N/A	Wrong at it's fullest.	Wrong as it can be	Leave local parking which gets less and less alone Wrong in the current climate as the inflation rate is hitting hard on the standard income earner who would need to fork out nor for parking permits if this goes through. Trees get cut down in this and surrounding neighbourhoods to create more traffic lanes and other streets get cut out of local traffic. Find the balance.

**ATTACHMENT B**

**Burton Street and Bligh Street Kirribilli - Permanent Closure and Shared Zone Design Concepts**  
**Summary of submissions received via email (Verbatim) during public exhibition period**  
**(4 October - 14 November 2022)**

No.	Name and Address	Submission Verbatim
1	Anna Boy Winslow St, Kirribilli <sup>1</sup>	<p>I have been a Kirribilli resident for 17 years and still reside at # Winslow St. I have to say that I am not impressed with either of the suggested options for the Burton Street plaza area. Option 1 looks cold and uncomfortable and option 2 has levels which make it difficult for prams/those with disabilities. But perhaps more significantly, neither option shows any respect for the heritage values of our precious and historic village. The designs and the street furniture of both options are banal.</p> <p>I recently attended a Milsons Precinct meeting where far better ideas were presented by Ms Fran Heron and others. Reference was made to the design aspects of the Bridge and other heritage motifs. Nothing that was presented by Ms Heron looked expensive or eccentric; it was however thoughtful, imaginative and elegant. I commend it to you.</p> <p>For myself, in terms of trees in the area, I thought wisteria might be nice - allowing sun during winter, a display in Spring and leafy green in Summer. I am however no horticulturist.</p>
2	Stafford Watts <sup>2</sup> N/A	<p>Despite the provision of timber barks sit on, I was dismayed to see the removal of the classic North Sydney park bench. It was used by me and other members of the public. I ask that the original classic bench be reinstated in the permanent design. The classic benches are part of the fabric and character of North Sydney. They are also found in the North Sydney designed bus shelters.</p> <p><a href="#">This photo shows the demolition of the bench in Burton Street in September 2021.</a></p>
3	Simon Moore Upper Pitt St Kirribilli	<p>I just wanted to register my support for making this closure permanent. I feel it has made a really nice space there and would be VERY sad if it were reopened to traffic.</p>
4	Barbara Cameron-Smith Carabella Street Kirribilli NSW 2061	<p>As a long term resident of Kirribilli during the 1970s and permanently since 1990, I fully support the road closures and wasn't aware that they were trial closures and trial design schemes. Burton Street in particular has been very well used by the local community on a daily basis and a gathering spot, including for parents picking up their kids from school.</p> <p>My key concern at the time were the colour schemes adopted in the road painting, lamp posts and so forth. To me they were alarmingly garish and didn't, in my opinion, fit in with the local area. I was flabbergasted I must say. Too much bright blue.</p> <p>Thanks to Council's leaflet, I have now looked at the proposed permanent design concepts.</p> <p>Re Bligh Street Shared Zone Layout, either Option 1 or 2. Both look pretty good and so much more in keeping with the streetscape than the temporary measure.</p>

<sup>1</sup> Submission also made following community workshop to #5 Attachment C

<sup>2</sup> Submission also made via online feedback form refer #45 Attachment A

No.	Name and Address	Submission Verbatim
		Re Burton Street Layout, prefer Option 1. Terraces create accessibility problems for people in wheelchairs and in my opinion an unnecessary trip risk for people of all ages, including toddlers and kids racing to catch the lights, not to mention cyclists heading down towards Carabella Street, whether allowed to or not.
5	Graham Turville-Ince <sup>3</sup>	<p>Submission 1: Really cannot comprehend why we are still at a community consultation stage at all. It was my understanding that there would be a simple and smooth transition from the "trial" using finishes that had been discussed at length and were compatible with a "village feel". I would have expected the entire project to have been completed by now.</p> <p>Now this letter arrives in my letterbox which not only drags out the consultation period to mid-November but then goes on to suggest that "anticipated construction" will begin in mid -2023!!</p> <p>Seems to me that the community is being treated very poorly. We in Kirribilli only number 3,820 people yet we have to go through all this palaver and delay.</p> <p>Other matters that I have brought to the attention of council were normally dealt with in a friendly, responsive and proactive manner but the memorial to the late Jim Saad and the refurbishment/replacement of the street furniture ,at and under the first archway from the station are two examples of promises made but absolutely nothing done. I think the Saad memorial is now a WIP a long time after his passing. Attached are photos of the furniture - only good for firewood.</p> <p>Keep seeing millions of \$\$ spent on N Sydney but absolutely nothing in Kirribilli - it's a dirty mess</p> <p>Woolworths deliveries, although fairly infrequent and generally at community friendly hours, do have some impact on the footpath outside the store. Perhaps more importantly, there is a fairly regular procession of waste and empty containers past Antonio's Cafe - I guess that's to the waste bins around the corner. Doesn't Woolworths have internal access to the waste bins in their Humphrey Place area?</p> <p>The other matter, which may be in hand, is the appalling state of the retail properties on Fitzroy Street around the corner from BWS. It's like entering another world and from memory (I used to live near there), it has been a breeding ground for large rodents.</p> <p>The old Pizza shop, Fish and Chip shop and the adjacent property are in terrible condition. Only Bamfords could be deemed usable.</p> <p><a href="#">Photo 1 Street Furniture</a></p> <p><a href="#">Photo 2 Street Furniture</a></p> <p><a href="#">Photo 3 Street Furniture</a></p> <p><a href="#">Photo 4 Street Furniture</a></p> <p>Submission 2: There's a lot to be done which will need funding from the council and owners of related properties.</p> <p>Imagine when the bike path over the bridge is completed and the N Sydney Olympic Pool is reopened - a lot more people will be attracted to Kirribilli but it needs a major facelift and it also needs to be maintained.</p> <p>If need be I can volunteer to sweep streets etc - I already do that outside my unit in Carabella Street - pavement and gutter and all waste placed in the green bin</p>
6	Estelle Blair KIRRIBILLI	<p>I am writing to express my <b>opposition</b> to all the designs presented for both Burton Street and Bligh Street, Kirribilli, for the following reasons:</p> <ol style="list-style-type: none"> <li>1. Neither of the presented options encapsulate the character of Kirribilli. They are fine, but they are not exceptional. As this is the first step of revitalising Kirribilli, it will set a standard for further works in our suburb. This points to deficiencies in the Master Plan. This belief has been expressed to the engineering department and Councillors numerous times, so I will not go into the details as they are already well known.</li> <li>2. There is a glaring technical fault in both the designs. The extension of the footpath on Broughton Street, outside Woolworths, will effectively take out an informal lane of traffic. Often during peak hour, cars are turning right onto Ennis Road to access Milson Point train station, and traffic continues to flow as vehicles are able to pass using the informal left hand lane. Extending the footpath means that the option to go around cars turning right will be removed.</li> </ol>

<sup>3</sup> Submissions also made following community workshop refer to #3 Attachment C

No.	Name and Address	Submission Verbatim
		<p>3. Jacaranda's are not suitable for this area. I understand that North Sydney Council are not wedded to the tree of choice, but it is important to highlight this. Indigenous trees would be preferable. Jacaranda's create a slip hazard, and as that area is highly trafficked by pedestrians and active transport users, this would create a severe problem.</p> <p>4. The concrete bollard 'seats' should be removed. These 'seats' are absolutely atrocious, and are commonly referred to as 'anti terrorism bollards'. They add nothing to the aesthetic, they only take away. If seating is to be implemented in the Burton Street plaza, it should be tasteful. These are not. Moving forward, it is imperative that North Sydney Council <b>withdraw</b> these plans, as well as the current Masterplan. There is an opportunity here to move forward as one with the community, and revolutionise the way North Sydney as a whole moves forward. Instead of supplying the drawings and collecting data to fit into one of two preconceived boxes, the data should be collected in order to inform the designs. Questions about what the community want, what works, what does not work, and how Kirribilli residents wish to interact with their suburb. It has been strongly expressed by most in the community that Bligh Street remain open. This is an exit point for many on Carabella Street, and any suggestions that it should be permanently closed should <b>not</b> be explored. I side with the community on this point. One suggestion that has been discussed throughout our community and has yet to meet any opposition is the idea that Kirribilli, as a whole suburb, should have a <b>30km p/h speed limit</b>. North Sydney Council should be congratulated for their recent steps to reduce car dependency, congestion, and to place a greater emphasis on active transport and walking. I believe that closing of Burton Street falls under that umbrella. Our streets should be filled with people, bikes and scooters, therefore reducing the speed limit in our suburb will make it safer for everyone.</p>
7	Jillian Christie Kirribilli <sup>4</sup>	<p>Having lived in Kirribilli for 25 years, I have seen these two roads change from two way, to single direction, with widened footpaths, to allow for café activation on the streets. Living in Carabella Street between Loreto and Aloysius Junior schools, I am also fully aware of the traffic generated, the parking issues as well as the increased pedestrian movements throughout the Kirribilli Village area. Having a disability, I am aware of the needs for vision impaired as well as people of all abilities.</p> <p>Having read all the reports, reviewed the plans, partaken in the Kirribilli Streetscape meetings since 2001, attended the recent Kirribilli workshop and precinct meetings - It is with this past knowledge and experiences, including all the past changes, along with how and when they were implemented, and how the schools and traffic operates, within Kirribilli, that I must <b>OBJECT</b> to the proposed options for both Burton St and Bligh St</p> <p><b>Issues:</b></p> <p>These concept plans prepared for NSC have not considered the heritage and place making significance of Kirribilli, being the vantage point for all the harbour events, for the regal visitors to Admiralty House, and the Prime Minister to Kirribilli House. Nor do they address the significance of the Bridge, as the link between the city and the north, nor the significant connection of this place to First Peoples.</p> <p>These designs do not address the pedestrian flows to Milsons Point Station, from the schools, along Burton St and across Broughton Street.</p> <p>Pedestrian Crossing at Burton St near Humphrey Place, should be considered to incorporate across the whole width of Humphrey Place and Burton St., to meet the desire lines.</p> <p>This full wider pedestrian crossing was shown as full width on the Kirribilli Master Plan. The concept plans show the need for realigning the crossing anyway, so you may as well do it properly now, across the width of Burton St.</p> <p>This concept plan also shows changes to widen the footpath outside Woolies, which will impact on the traffic flow. The PeopleTrans report (3.1, p.19 Fig.3.3) shows Broughton St is operating "above is environmental capacity limits" – i.e. it currently fails as a feeder street, with excessive traffic.</p> <p>Currently, there is queueing along Broughton St for some 46m, to below Crescent Place. So with this detailed traffic studies and analysis – the removal of the kerbside lane outside Woolies, does not make any sense to further restrict the traffic flow on Broughton St., especially as Ennis Road, is to be the main parking area in the Master Plan.</p>

<sup>4</sup> Submission also made during online information session refer to #2 Attachment D

No.	Name and Address	Submission Verbatim
		<p>These two pedestrian crossings should be included in these 'concept plans'. They should have been out on exhibition at the same time. It's meant to be about pedestrian safety – the PeopleTrans report stated that Burton St, had 700 people per hour using Burton street in the 3-4 pm peak, post schools. They only mentioned Aloysius school, and not Loreto. Let's do it right and only do it once!</p> <p>Option 2 ignores accessibility for persons with a disability being able to easily access the newly made public open space, due to the tiered nature of the design. Any 'wheeled' or slightly infirm person, (wheelchair, mobility scooter, walking frame, pram, post surgery, crutches, walking stick) would have to use the footpath, avoiding the wait staff – continuously darting out of the café and back, and then traverse through the paid outdoor seating, to access the free outdoor space. Then do the reverse to get out of the space. It is appalling that a design such as this was acceptable.</p> <p>to council in this day and time of awareness of inclusion for all abilities.</p> <p>Basically, Council needs to go back to the 'drawing board' to start again, with more input from the community who live and know how this space is used and works</p> <p>Burton Street:</p> <ol style="list-style-type: none"> <li>1) It is reasonable for Burton Street to be closed permanently – THIS IS THE ONLY THING THAT I CAN AGREE ON WITH THE EXHIBITION OF THE CONCEPT PLANS</li> <li>2) It should be open and accessible for all to be able to access the central space, and not just for further café patronage.</li> <li>3) It should have better pedestrian access and flow, with less bulk in the form of seats to delineate the paid outdoor dining from the 'free' space.</li> <li>4) It needs more appropriate finishes – to address the heritage nature of the area</li> <li>5) It should include the pedestrian 'desire lines' as shown in PeopleTrans report of 5.9.22, section 3.6 Fig.3.11 where they state the overall operation of the Humphrey Place and Burton St. Intersection should be considered in this design. Maybe the pedestrian crossing in Burton St should be across Humphrey Place so that people can chose whether they walk on the north or south side footpath.</li> <li>6) The traffic report by PeopleTrans failed to mention all the "out of service" buses that go through Kirribilli on a daily basis. This all adds to the failure of Broughton St, in terms of excessive car numbers, greater than 500 per hour. (931 in AM; 580 in PM; 768 Saturdays – p19)</li> <li>7) The traffic report assumed that all the connecting streets to Burton are 40 kph – which is not true. The community has been asking for the whole of Kirribilli to be a 40 kph zone, especially around the schools - Carabella, Burton, Willoughby, Elamang, Fitzroy and Jeffrey Sts, but Council only made Broughton Street &amp; Clark Road 40 kph, with all other streets being 50 kph.</li> <li>8) The Broughton St signalised crossing should be across the whole of Burton St as shown in the Kirribilli Master Plan.</li> </ol> <p>Bligh Street:</p> <ol style="list-style-type: none"> <li>a) Bligh St should NOT be a shared zone as shown in these concept plans</li> <li>b) If it is to be a 'shared' zone, it should as per PeopleTrans report of 19.9.22 – where it states that it could be a Category 2, with retained kerbs and guttering – which is cheaper, better for drainage and safer for cars not hitting restaurant goers or pedestrians by accident, without more obstructions along the road way – ie bollards.</li> <li>c) The local residents and school principals and deputies are concerned about the children walking on the road with the traffic at this point, especially given the number of young children in the two schools</li> <li>d) The Bligh St report of 19.9.22 did not revise the traffic number or speeds along Bligh St, they say that the numbers from 2020 are still valid. I would disagree, they should have more recent values, as well as having accurate speeds recorded, post years of Covid.</li> </ol>



No.	Name and Address	Submission Verbatim
		<p>e) Their report stated that speeds were only recorded at the Broughton St. intersection, which show speeds as cars stop for the intersection, it does not show the speeds along Bligh St., which should be known, before making it a shared zone.</p> <p>f) The use of bollards to define the carriageway, is only narrowing the existing footpath, which schools are happier that the students stick to and use. These Bollards create additional obstacles for the community, and especially people with disabilities, to have to negotiate.</p> <p>g) The temporary planter boxes along the wall of the church are in positions that currently restrict the thoroughfare on the footpath, especially when placed close to the exiting sign posts. All of this is a hazard for people with disabilities.</p> <p>Therefore, I request that NSC revisit each of these proposals for both streets, as none of them are suitable and fit for purpose into the future. Council needs to go back to the beginning, with more input from the community, to devise some suitable outcomes for all.</p>
8	Dominique Wolfe	<p>Just a quick vote for Option 1 please - the seating has been so well used during the trial, and is essential for the plaza to be a place where people can rest and relax, and enjoy impromptu catch-ups with neighbours and friends.</p> <p>Without the public seating, this becomes a thoroughfare only, and cannot function as overflow seating for takeaway the nearby businesses.</p>
9	Alison Rhall N/A	<p>BURTON STREET</p> <ul style="list-style-type: none"> <li>• I support the closing of Burton Street and making it a pedestrian zone.</li> <li>• I support Option 1 which has the flat, one level surface replacing the existing road. I pull my shopping trolley through that part of Burton Street at least once a week and at different times of the day and have discovered it can be challenging to pull it down either footpaths when there are people standing around talking or waiting for coffee/seats or to dine at Morgans. If you were to implement the stepped version offered in option 2, it would be difficult not only for me to use with a fully loaded trolley but for anyone with mobility issues requiring a walker or wheelchair and for parents with prams.</li> <li>• It is difficult to know how wide the gap you are proposing for pedestrians to enter the closed Burton Street after crossing Broughton Street. It looks narrow given you are proposing two Jacaranda trees in this space. Currently grounds of school students wait outside Woolies entrance during the day waiting for their friends to come out or while they wait to cross the road, this area also seems to be the stopping point for people making decisions about where to go next and space in this area is already limited. I am concerned this space will get more cluttered with the introduction of the formal garden bed rather than pedestrians being able to cut across to the bollards or over towards the old Flight Centre shop which is how lots of people currently cross the road.</li> </ul> <p>There was a suggestion from council that the markets would flow over into the closed Burton Street, is this still the thinking and if so, the garden bed will impeded the flow.</p> <ul style="list-style-type: none"> <li>• Cleanliness - Option 1 with the one flat surface will allow the street sweeper to easily clean the paving. At present, the area can be quite disgusting at times with split coffee/drinks, food, dog urine and poo and litter. It needs to be cleaned regularly to maintain the attractiveness of the area.</li> </ul> <p>The area needs more rubbish bins, if you want people to consume food and drink in that area they need somewhere easy to get rid of their rubbish. One bin on Broughton Street is not enough</p> <p>BLIGH STREET</p> <ul style="list-style-type: none"> <li>• I support Option 2 with the road surface being a different colour as the better option as it clearly defines the road surface for all users of the area, especially as there are a lot of out of area drivers and pedestrians using the street.</li> <li>• Visibility in a car when exiting Bligh Street onto Broughton - there have been a number of different plantings over the years in the garden bed on the RHS when exiting Bligh Street in a car. From tallish grasses to the current standard roses, all impact on the ability of the driver to see what is coming down Broughton Street especially when there are cars parked along Broughton.</li> </ul>

No.	Name and Address	Submission Verbatim
		<ul style="list-style-type: none"> <li>• Or a graded planting with slightly higher native plants grown closer to the car space flowing down in size to low ground covers at the Bligh St exit? The new proposed street lights should not impeded the driver's vision when exiting Bligh street.</li> <li>• Cleanliness - the area needs to be kept clean and more rubbish bins provided.</li> <li>• Watering the planters - who is going to water the planters on a regular basis? In both Burton and Bligh Street temporary plantings, this was left to residents and shop owners to water the plants when they were first planted and were wilting from lack of water. Council needs to water the planters on a regular basis.</li> </ul>
10	Debra Blair	<p>I wish to voice my opinion regarding the options provided by Council for the first phase of the Masterplan for Kirribilli Village. Neither option suits this distinctly unique area, an area more closely bound to the 'Rocks'. As it is the first phase and getting it right at this stage is vital in setting the tone for further work in the Masterplan.</p> <p>Council appears to recognise this area differs to the business space in North Sydney and hopefully understands the importance of setting the standards at this crucial point.</p> <p>I am amazed that one of the options has a terraced effect and therefore directly people with disabilities to a 'pinch' area in front of two very busy eateries. Surely this is offensive to people with disabilities, it the narrows down to just one option.</p> <p>Therefore I would like to suggest a new brief for design for the Masterplan be adopted after the community has a chance to voice their opinions rather than be asked to choose between two options based on a brief that didn't highlight the uniqueness of character of this area.</p>
11	Margie	<p>Based on the two designs depicted in November 2022's North Sydney News, Option 1 on page 4 is appropriate. It is flat and user friendly for the disabled. Option 2 has steps to various levels, a disadvantage to the disabled and a potential danger when dark or if lighting fails or is weak.</p> <p>Council has the responsibility for safe environments for its citizens.</p>

## ATTACHMENT C

**Burton Street and Bligh Street Kirribilli - Permanent Closure and Shared Zone Design Concepts**  
**Summary of submissions/comments (Verbatim) following Community Workshop**  
**3 November 2022**

No.	Name and Address	Submission Verbatim
1	Rebecca Knights Coco Chocolate <sup>1</sup>	<p>Thank you and I hope the removal of the car space and addition of the area in front of the substation on Bligh St be considered.</p> <p>It would be very beneficial not only for Coco Chocolate but the community, if the Bligh St rejuvenation also allows Coco Chocolate have the seating/ beautification area the same as Kirribilli café and oski.</p> <p>Also that the build-up of rubbish in front of the substation can no longer occur if planting/ street scape design/ seating was located instead.</p>
2	Graham Turville-Ince <sup>2</sup>	<p>Would it be of any benefit to council and the Kirribilli projects if we were to meet separately from the larger group?</p> <p>I am not politically motivated - unfortunately I don't think that's the case with quite a few other people</p> <p>My sole interest is to make sure that the Kirribilli community as a whole are delivered the best outcome at an affordable price in the shortest timeframe.</p> <p>This will not happen if self interest groups continue to demand an Option 3.</p> <p>The following bullet points and comments should help to produce an exceptional outcome that is warmly received by the community as a whole:</p> <ul style="list-style-type: none"> <li>• no single interest group to hold sway over the decision making process - to be frank, the "Milson Precinct" syndicate appear to desire that an Option 3 be created. This would be a distinct negative since it will further delay the process and undoubtedly cost money that the projects do not have an allocation for</li> <li>• option 2 should be discarded since the terrace style is not sympathetic to older or disabled people.</li> <li>• option 1 should be the choice to stay with and that sensible and commercially viable alternatives for items like pavers and street furniture be proposed quickly and a consensus decision reached soonest. again NO to an Option 3 - simply a ludicrous idea backed by self interest</li> <li>• retention of planters - final choice of paint important - maybe a low sheen charcoal would be a good idea</li> <li>• pavers would be better in a grey granite especially in the high foot traffic areas. the entire Burton Street precinct will fall into that category. the pavers could perhaps be a light grey vs dark grey combination - not too dissimilar to Barangaroo. N.B. Granite tiles MUST be sealed prior to and at installation. This will avoid staining which is highly likely in restaurant/café environments</li> <li>• Kirribilli should not be beholden to a "North Sydney" theme - the light coloured shiny pavers are not suitable for the "Kirribilli Village Thematic"</li> </ul>

<sup>1</sup> Submission also made via online feedback form refer to #58 Attachment A

<sup>2</sup> Submission also made via email refer to #5 Attachment B

No.	Name and Address	Submission Verbatim
		<ul style="list-style-type: none"> <li>• the word "heritage" was mentioned a lot last night - whilst I am sympathetic I don't really think that the actual village has a lot of heritage assets. It's a mish mash of old and new. Remember that we must represent the thoughts and vision for young people with more modern tastes. <b>It was noticeable that most of the attendees last night would on average fall into the "old" category !!</b></li> <li>• bollards should probably be of the stainless steel variety with an embossed plaque on top in brass/copper</li> <li>• the concrete blocks to be levelled and topped with a resilient timber - be aware of the mould problem (it's been rife during this exceptional wet season) - in any event the project areas will need to be gurneyed fairly frequently</li> <li>• do not retain any existing umbrellas unless they are in good condition AND tenants must be obliged to clean them on a regular basis</li> <li>• please do something about the litter bins and movement of litter from cafes/restaurants/Woolworths and other entities that produce significant volumes of dry and perishable waste - it's not acceptable for bins to spill over or for waste to be moved along pedestrian footpaths, especially within the Burton and Bligh street retail operators areas</li> <li>• the Bligh Street project is fortunately very simple although it would have been a good idea to close that permanently - a weekend closure will suffice. Rebecca Kerswell , owner of Coco Chocolate, suggested to get rid of the parking slot outside of her shop - 100% agree - we want less cars in Kirribilli anyway since we have some of the best public transport options of any Sydney suburb.</li> <li>• there were some pretty petty subjects raised last night - e.g. too many lights on the trees at night - I think it's a very attractive feature - leave as is</li> <li>• probably no more Jacaranda trees. Time for a few more evergreen (e.g. magnolia but would have to be either Magnolia Grandiflora or Magnolia Virginiana) - Kirribilli has many wonderful trees but of course there is a prolific issue with leaves and bark. Council seem to have stooped sweeping the streets - I am regularly sweeping the pavement and street in Carabella and Holbrook - probably a total of 40/50 metres of work and I bin all the waste for green collection. I do it as a service to the community. I would be surprised if there are more than 10/20 people</li> <li>• there are circa 3,700 residents of Kirribilli - I am sure that they are all capable of having their say in the decision of Option 1 or 2 BUT they will certainly not be looking for an Option 3. We do not need more time wasting - get the reviewed Option 1 with minor but sensible palette changes in place (keep it to a minimal choice). If needs be make</li> <li>• the community engagement more formal by way of an online referendum ( easy). Community want a decision and progress not more divisive time wasting</li> <li>• get this out of the way and get on with other important parts of the broader Kirribilli plan - e.g. the street furniture near the Milsons point archway which is dilapidated and falling to pieces and as a specific one off the Jim Saad memorial which for some extraordinary reason has been put off (I think over a year since the commitment was made in the presence of his family, myself and council)</li> </ul> <p>I hope the above is of help - we <b>MUST</b> deliver for the <b>COMMUNITY ASAP</b> on Burton and Bligh - no more unnecessary delays and potential waste of ratepayers/taxpayers funds. Happy to continue to be involved going forward BUT no interest in simple minded politically driven banter</p>
3	Michael Bracka	<p>Many Thanks for convening the workshop. I really appreciated the openness and welcome for participation. Certainly my personal goal is to bring a more productive and engaging approach by our community in working with NSC to achieve great outcomes. A couple of comments indicate there is some way to go on this (no names!!!) - but if you don't start, you never get there.</p> <p>I also have a great appreciation for the challenges in front of the NSC Executive - you are spinning a million plates simultaneously.</p> <p>With regard to the workshop, the biggest message and opportunity I saw from the broader group was for us all to take a step strategically to ensure whatever is done is in keeping with the Character of Kirribilli Village. I sensed some concern around the room of adopting a more general LGA-style approach rather than really capturing what is unique and special about KVC and ensuring we move into investment to capture this ideal for the future.</p>

No.	Name and Address	Submission Verbatim
		<p>For me the linkage to the Rocks Character and embracing the role of the SHB is essential to achieve a compelling outcome. I also feel there is a 3-pillar starting point to get right - Burton Street, Burton Street Underpass and Ennis Road. These intersecting corridors could be the nucleus of a great and compelling KVC approach which can be then rippled more broadly. We have some wonderful blank space to consider carefully along the Broughton Street wall below Ennis Road - imaging this being turned into a KVC feature and landmark!</p> <p>I am sure you will compile all the inputs and bring out the biggest ideas/suggestions from the workshop - this will be greatly appreciated by us all. As an aside, early days but I think the work done on the Jacaranda Blooming arrangements look to be working well. The positioning of the variable signs is certainly more effective and the corflute wrap arounds are more effective as well. Thanks so much for taking on board the suggestions.</p>
4	Belinda Dawkins	<p>What a waste of time No wonder I dont go to Precinct meetings. You have a room full of people who will never agree as many have their own political agenda and no taste. The Council employed designers Give the people 2 options and choose the most popular and that should be the end of it's no wonder nothing gets done</p>
5	Anna Boy <sup>3</sup>	<p>Thank you for your email and the workshop. I can see it will be hard to please everyone and thank you for trying. Big picture seems to me to be that we need more obvious heritage eg perhaps more sandstone and less concrete. I believe the Council has a heritage team of some sort which has strict control over what house owners can do. Maybe they could be more involved. Just a thought.</p>
6	Sarah Reed Kirribilli resident Willoughby Street	<p>There are many people in Kirribilli who fear council is misinformed about where residents want to take the 'look, feel and design of Burton and Bligh streets.' Many of us believe that our suburb is unique and iconic (within the NS council) and as such, should not be 'catapulted' into designs befitting the 21st century (i.e. concrete and steel) but rather, should usher in designs that encompass proper Accessibility, with reference to our heritage... as a 'sister suburb' to The Rocks and as host to Admiralty House, Kirribilli House and the iconic Harbour Bridge.</p> <p>Please don't act hastily on development in Kirribilli. I feel Council is stripping the suburb of charm and green space. Please link the planning team with the heritage team and offer up a plan and design befitting of Kirribilli's historical significance.</p> <p>Please consider the strong opposition (in the room) to both plans. Please take more time to consider doing something special in Kirribilli, setting the stage for a suburb worthy of international tourists and domestic celebration.</p>
7	Kerry Bates	<p>I thought the session was well organised and presented well by Duncan. It was obvious that a considerable amount of organisation and understanding had gone into the session. Starting with the detailed description of possible options and followed by explanations of earlier upgrades ( I remember clearly the changes under Ted Mack) it then moved onto individual input.</p> <p>The up-to-date explanation of the paving, including colours and cleaning requirements, helped the group to focus on the practical along with the aesthetic. It is not easy to balance everyone's views on such things as colours, heritage vs modern, planting etc but Duncan managed.</p> <p>I felt that using the latter part of the session to break into "working groups" worked so well. It gave everyone a chance to put forward their ideas and putting an idea or request in writing gives people a sense that it will be heard and considered.</p> <p>Ps. I know there are varied views about the "fairy lights" and I would like to say that I really like them. I love to see the faces of the children when they encounter them -</p> <p>"fairy land" brings a touch of magic - and sadly so many other things in young ones' lives are now serious and sometimes confronting</p>

<sup>3</sup> Submission also made via email refer to #1 Attachment B

**ATTACHMENT D**

**Burton Street and Bligh Street Kirribilli - Permanent Closure and Shared Zone Design Concepts**  
**Summary of comments from Online Information Session<sup>1</sup>**  
 11 October 2022

No.	Name and Address	Submission Verbatim	Preferred Option/Note	Code
1	Hilary Hatfield <sup>2</sup>	Why does Council think that the very 'standard' street lighting in the form of straight, modern sticks will be accepted by the Kirribilli residents? Why not replicate some of the beautiful old lampposts which would reflect the historic aspects		
2	Jillian Christie <sup>3</sup>	The existing 'upgrade' works of widening of pedestrian footpaths in Burton, Bligh and Ennis Road streets was completed since I've lived in the area - so not 80's and 90's - as I used to drive both directions on these two streets that were then made one way with widening for commercial use ... so not so old - maybe early 2000's? Burton St, should not be done to just make it more available for commercial use, vs for community 'free' use.		

---

<sup>1</sup>Comments made during the Q&A section that are to be treated as submissions

<sup>2</sup> Online feedback form also received refer to #70 Attachment A

<sup>3</sup> Written submission also received refer to #7 Attachment B

**ATTACHMENT E****Burton Street and Bligh Street Kirribilli - Permanent Closure and Shared Zone Design Concepts  
Summary of submissions/comments from Precinct Committees**

No.	Name and Address	Submission Verbatim
1	Milson Precinct Committee	Motion 3 November 2022 - Milson Precinct requests that Council not proceed with either Option 1 or Option 2 of the Burton Street Plaza and Bligh Street Shared Zone. Milson Precinct requests that in consultation with the Kirribilli community, North Sydney Council develop Option 3, accompanied by an implementation plan that forms the vision and the guidelines that will drive the future streetscape and other public domain works. For: Unanimous (30 people)

NORTH SYDNEY COUNCIL

---



# Kirribilli Burton and Bligh Streets

CONCEPT DESIGN

---

DRAFT FOR REVIEW

ISSUE F • 28 NOVEMBER 2022



1.1 Burton Street | Option 1 / Existing levels & no kerbs



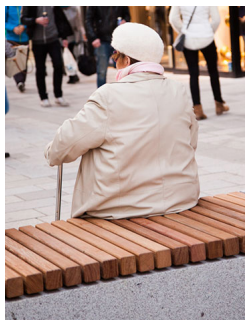
Bega – Pole top luminaire  
77 911 K3



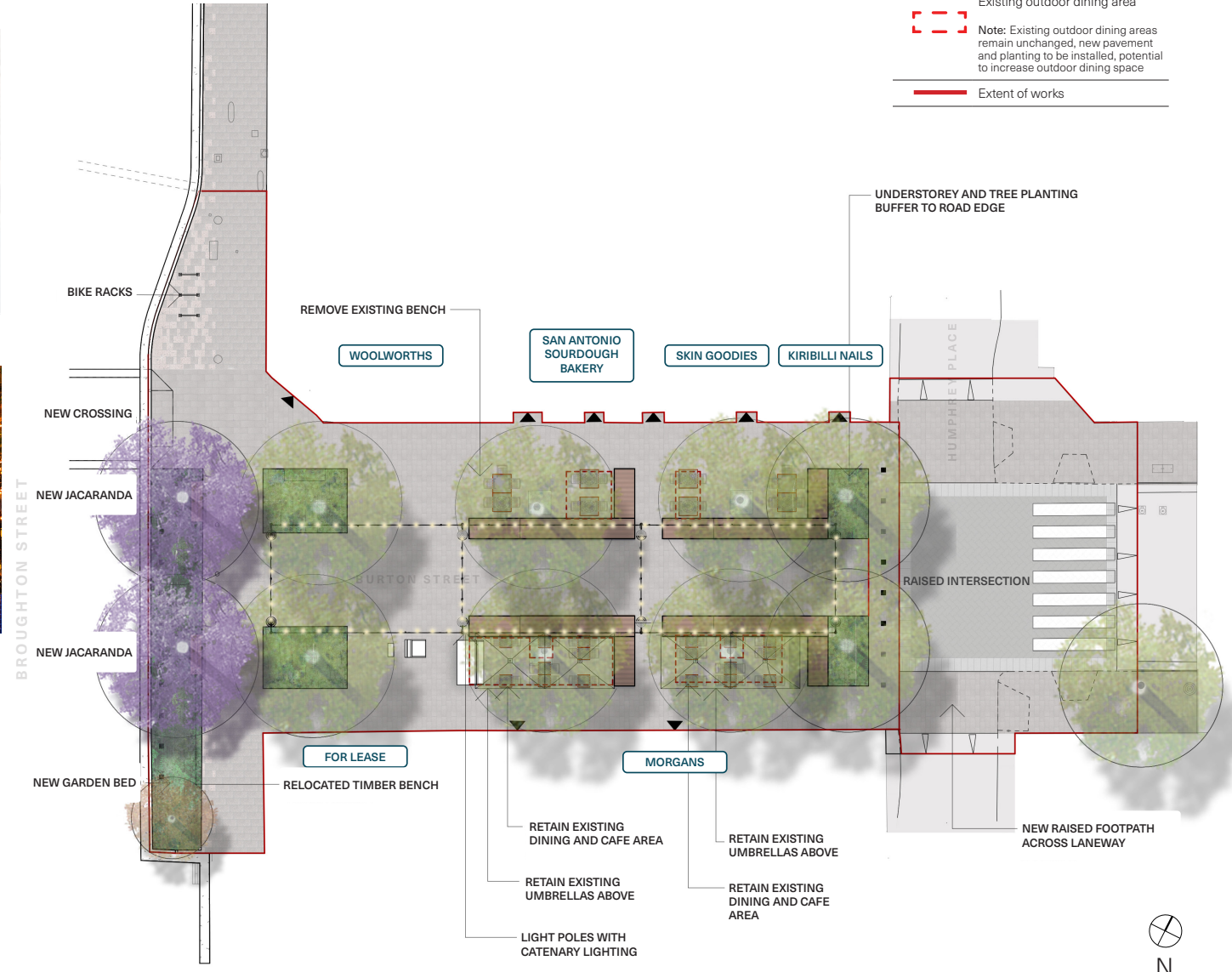
Street Furniture Australia –  
Victorian Bollard



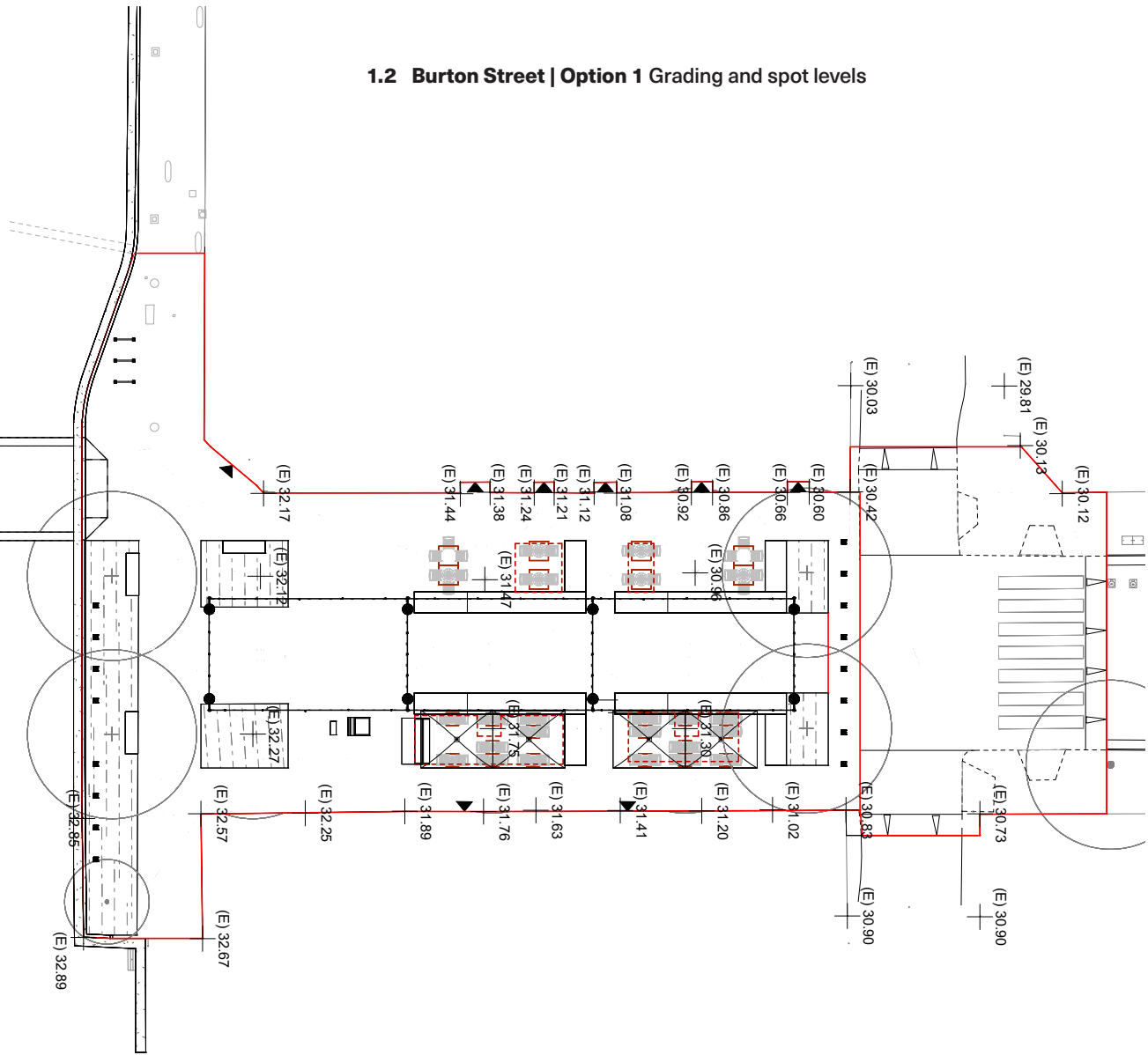
Catenary & fairy lights



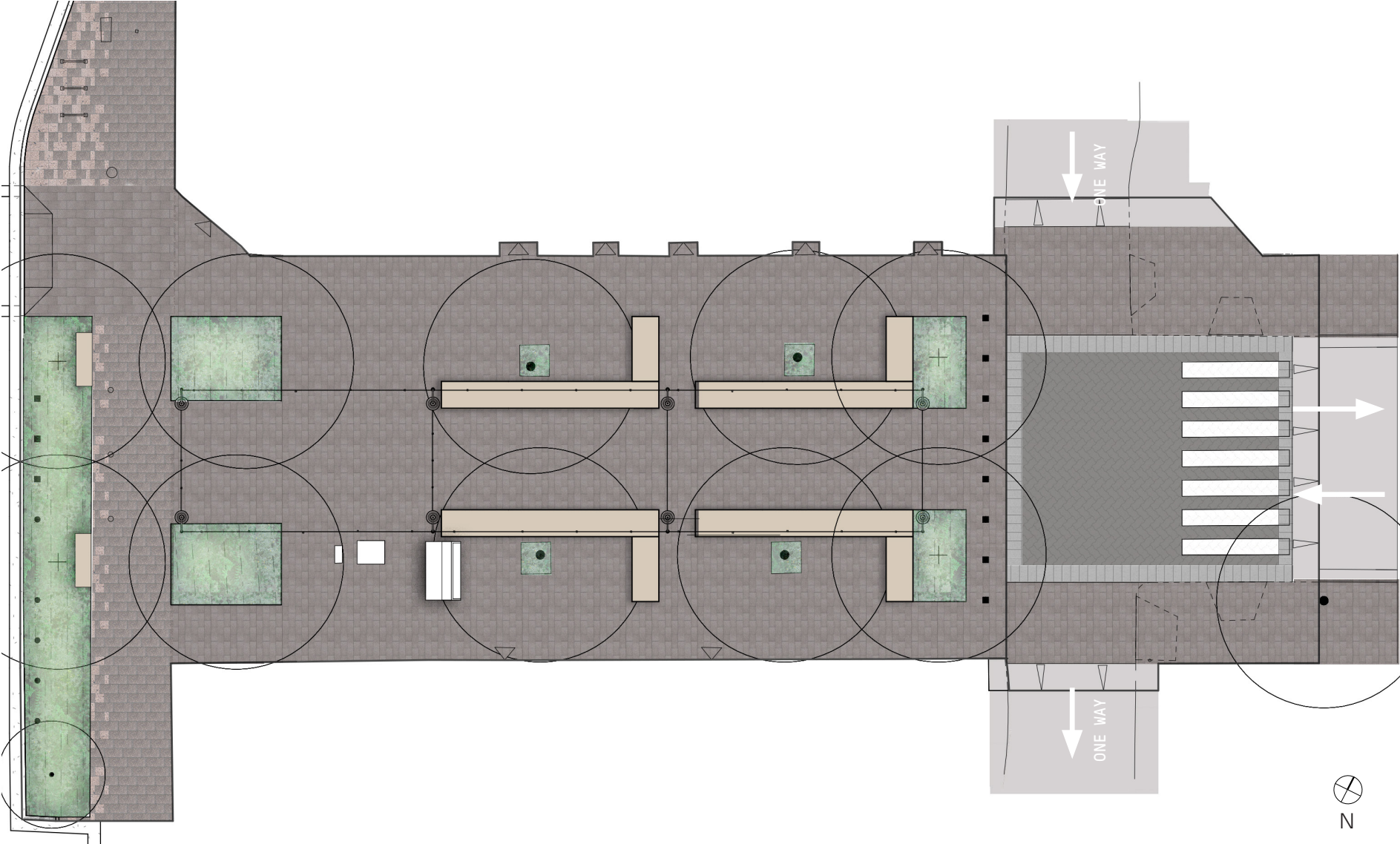
Stone seating edge with timber top



1.2 Burton Street | Option 1 Grading and spot levels



1.3 Burton Street | Option 1 / Dark footpaths high street / Light street closure



















NORTH SYDNEY COUNCIL

---



# Kirribilli Bligh Street

CONCEPT DESIGN

---

DRAFT FOR REVIEW

ISSUE F•01 DECEMBER 2022



1.1 Bligh Street | Shared Zone



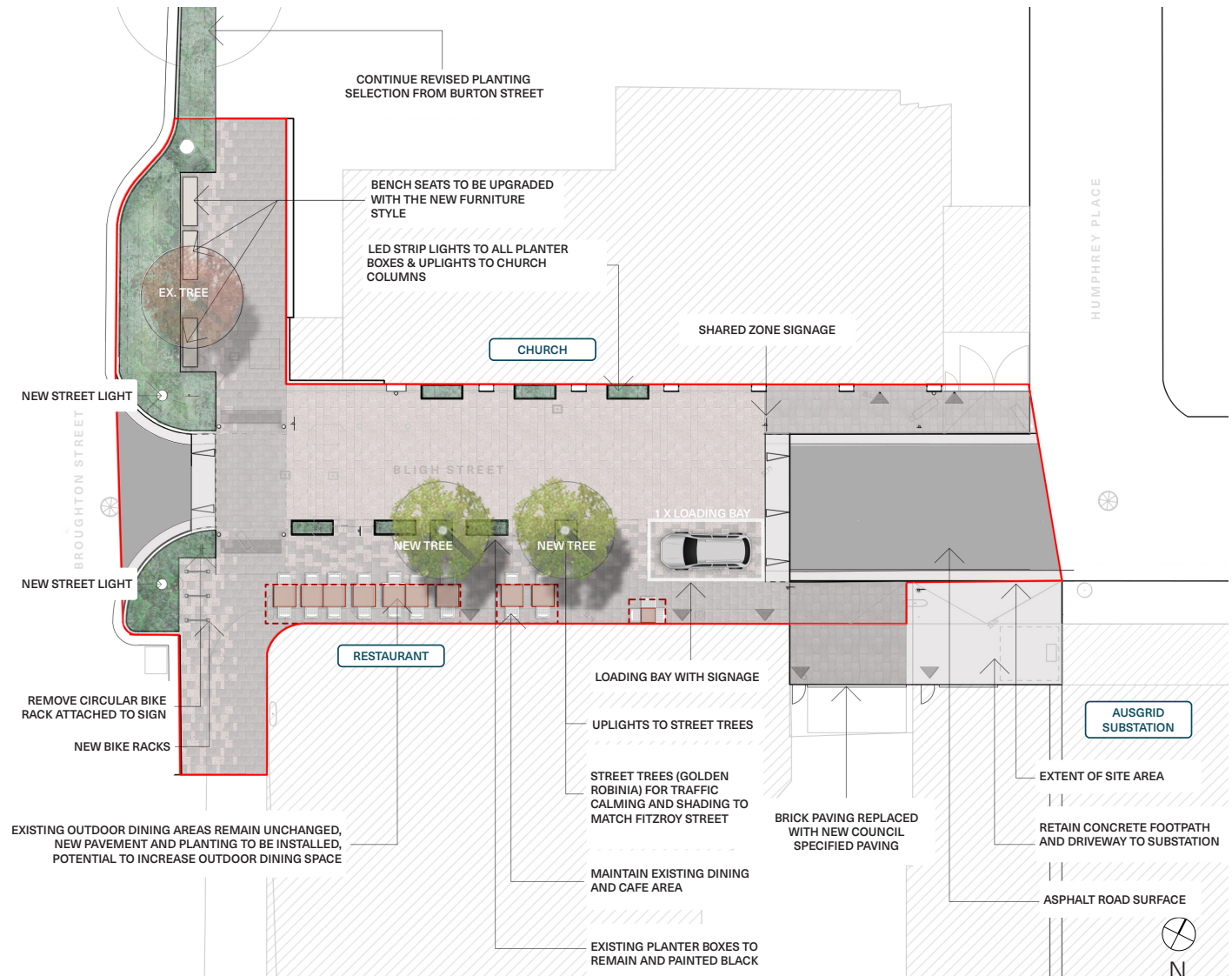
Existing planter boxes (to be painted black)



Bega - Pole top luminaire 77 911 K3

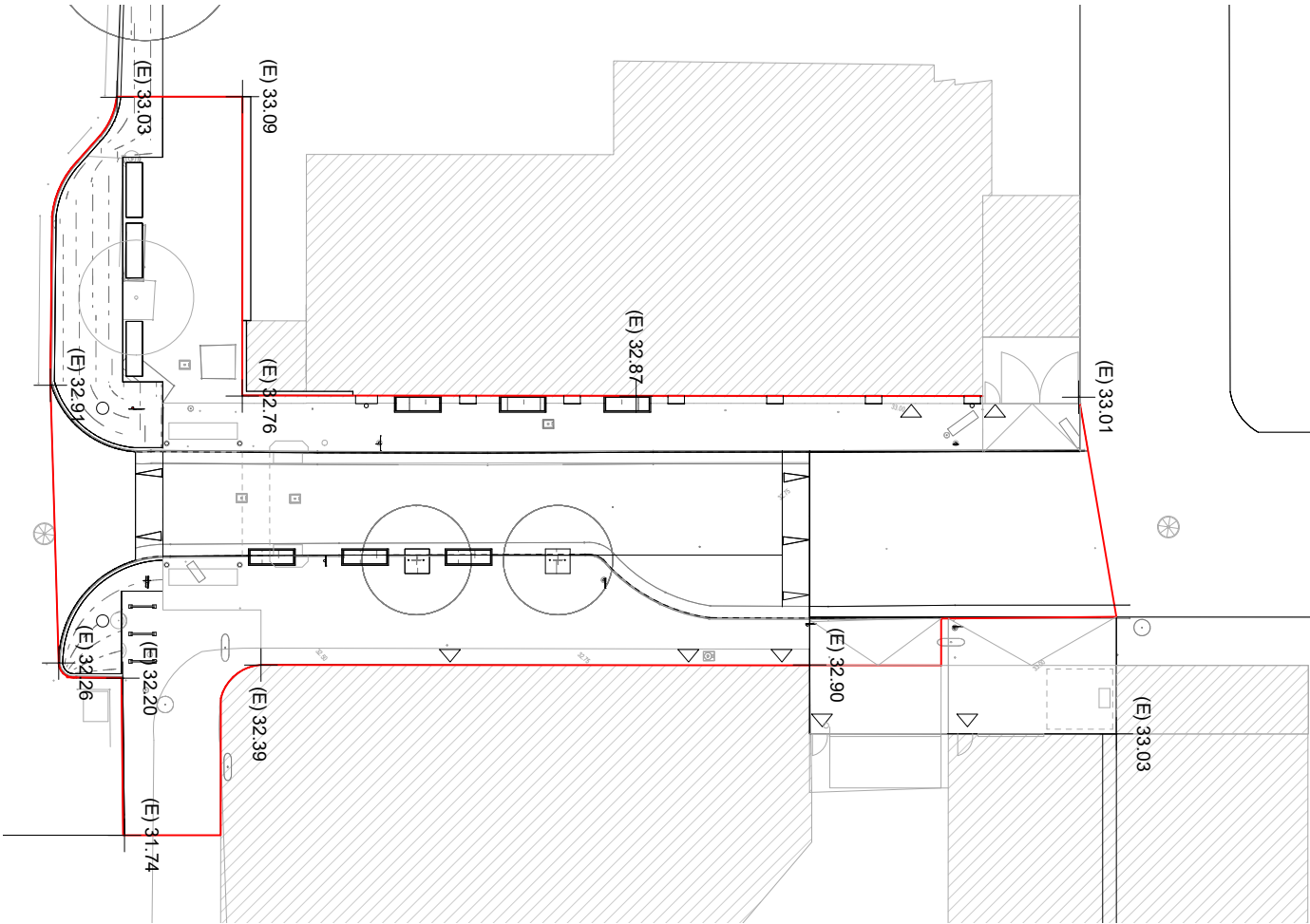


New street tree planting (as used in Fitzroy Street)



EXISTING OUTDOOR DINING AREAS REMAIN UNCHANGED, NEW PAVEMENT AND PLANTING TO BE INSTALLED, POTENTIAL TO INCREASE OUTDOOR DINING SPACE

1.2 Bligh Street | Grading and spot levels





1.3 Bligh Street | Shared street

