

## 10.2. Miller Street Pop-Up - Consultation Outcomes

**AUTHOR:** Max White, Sustainable Transport Project Co-ordinator

**ENDORSED BY:** Jon Higlett, A/Director Engineering and Property Services

### **ATTACHMENTS:**

1. Attachment A - Submissions Summary [10.2.1 - 79 pages]

### **PURPOSE:**

This report provides detail of the community consultation outcomes for the Miller Street Pop-up.

### **EXECUTIVE SUMMARY:**

The Miller Street Pop-Up is a temporary footpath widening and public space expansion on Miller Street, between Berry Street and Pacific Highway. Construction was endorsed by Council in March 2021 and was opened to the public in October 2021.

The Miller Street Pop-Up includes:

- closed sections of kerb side traffic/parking lanes and adjustment of the central lanes;
- closure of the left turn 'slip lane' from the Pacific Highway (southbound) into Miller Street; and
- installation of street furniture and plants.

Community consultation activities seeking feedback on the Miller Street Pop-up included:

- North Sydney Your Say webpage;
- direct Letter to residents and business;
- onsite signage; and
- social media posts on Facebook, Instagram and Twitter.

Key themes and issues raised were as follows:

- Of the submissions supporting the project - 32 respondents liked the additional social/rest space, 22 supported additional pedestrian space, 16 liked the additional greenery, and 13 respondents felt the pop-up contributed to creating a defined sense of place (placemaking).
- Of the submissions opposing the project - 68 respondents mentioned negative impacts on traffic, 29 felt the pop-up was negatively impacted by air and noise pollution, 27 respondents felt the pop-up was under-utilised, and 22 respondents felt the pianos were not appropriate for the space.

The construction works currently underway for the Sydney Metro are causing major impacts on Miller Street between the Highway and Berry Street, particularly the ongoing footpath

closures on the eastern side of Miller Street which force pedestrians to cross the road and travel on the western footpath. It is also a common occurrence for pedestrians, once south of the Metro construction zone, to cross Miller Street before reaching the pedestrian crossing at the Highway intersection. This practice has caused many near-misses and a number of accidents.

As a result of this, and in the interests of pedestrian safety in the short term, it is recommended that the Miller Street Pop-up be retained until at least the end of calendar year. It can then be reassessed in light of any changes with the next stage of the Metro development.

It is also recommended to retain the removal of the left turn slip lane from Pacific Highway onto Miller Street, and to formalise the removal with kerb realignment due to pedestrian safety concerns.

#### **FINANCIAL IMPLICATIONS:**

The cost of upgrading the intersection of Pacific Highway and Miller Street to permanently ban the left hand turn is \$155,000 (including 10% contingency, 10% project management, ex GST). This cost includes granite paving, granite kerbing, and drainage modifications. The temporary closure of this lane was done in conjunction with the popup installation. The permanent works will be considered in the 2023/24 infrastructure budget.

#### **RECOMMENDATION:**

- 1.THAT** Council retains the Miller Street Pop-up during Sydney Metro construction due to the ongoing closures of the footpath on the eastern side of Miller Street and to aid pedestrian safety.
- 2.THAT** the closed left-hand turn slip lane onto Miller Street from Pacific Highway and pedestrian island removal be retained and formalised with a kerb realignment.
- 2.THAT** Council utilise consultation feedback and advocate Transport for NSW on the design and construction of Miller Place.

## LINK TO COMMUNITY STRATEGIC PLAN

The relationship with the Community Strategic Plan is as follows:

### 2. Our Built Infrastructure

- 2.1 Infrastructure and assets meet diverse community needs
- 2.2 Vibrant public domains and villages
- 2.3 Prioritise sustainable and active transport
- 2.4 Efficient traffic mobility and parking

### 3. Our Innovative City

- 3.1 Our commercial centres are prosperous and vibrant
- 3.3 Distinctive sense of place and design excellence

### 4. Our Social Vitality

- 4.1 North Sydney is connected, inclusive, healthy and safe

## BACKGROUND

Miller Street Pop-Up Footpath Widening is a 'pop-up' (temporary) footpath widening and public space expansion in the block between Pacific Highway and Berry Street. The concept plan was approved by Transport for NSW, endorsed by the Council in March 2021 and opened for public use in October 2021.

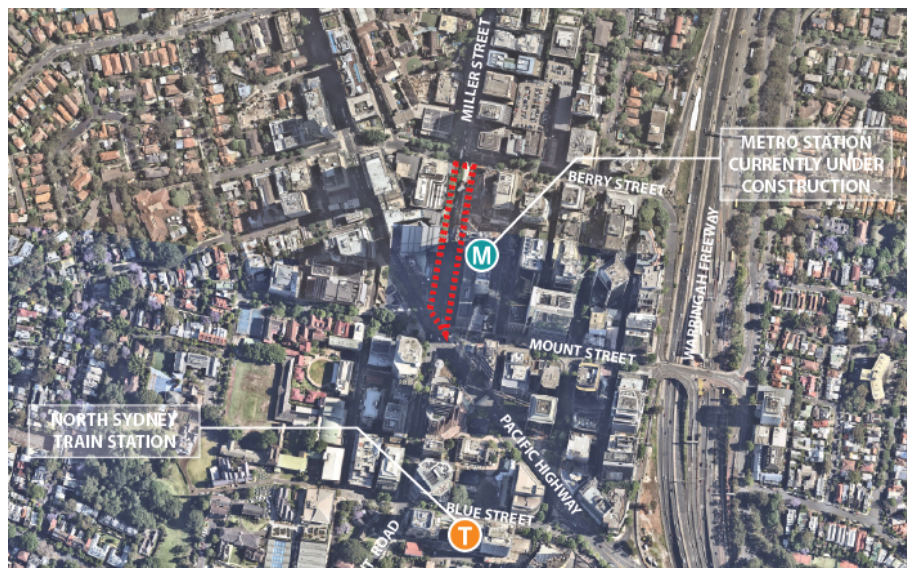


Figure 1. The Miller Street Pop-up is strategically located in the North Sydney CBD directly opposite the under-construction Victoria Cross Metro Station.

On 18 August 2020, Council was awarded a \$369,710 grant through the NSW Government's Streets as Shared Spaces (SaSS) program, to design and implement the Miller Street Pop-up. The SaSS program was in response to COVID and was intended to fund projects that provided better quality public space, increased vibrancy, and supported business and retail activity.

At its meeting of 24 August 2020, Council resolved:

*THAT Council notes that grant funding of \$1,040,000 has been awarded to Council through the NSW State Governments "Streets as Shared Spaces Program" which compliments and supersedes a number of the initiatives outlined in the 27 July 2020 Council Report. Further reports will be brought to Council on the status of the projects that are being funded through this program.*

Council was briefed and approved the design for construction in March 2021. The Pop-up was opened for public use in October 2021.

## CONSULTATION REQUIREMENTS

Community engagement has occurred in accordance with Council's *Community Engagement Protocol*. The detail of this report provides the outcomes from the engagement for Council to consider prior to adoption.

## DETAIL

This report discusses the outcomes of the public consultation undertaken on the Miller Street Pop-up. The pop-up is located on Miller Street between Pacific Highway and Berry Street, and is immediately adjacent to the currently under construction Victoria Cross Metro station.

North Sydney Council has undertaken strategic work in the *North Sydney CBD Public Domain Strategy* to completely pedestrianise this section of Miller Street, named 'Miller Place'.



Figure 2. The Miller Street Pop-up is located on Miller Street, between Berry Street and Pacific Highway

## 1. Project Scope

The Miller Street Pop-Up design includes:

- closure of one traffic lane on the western side of Miller Street.
- closure of left hand turn from Pacific Highway onto Miller Street. Including the removal of a pedestrian traffic island.
- widened/expanded footpaths, providing more room and improved access for people walking along Miller Street.
- seating areas for people to eat, rest etc.
- umbrellas and 'giant' pot plants providing shade and shelter from road areas.
- relocation of one bus stop (on the west side of Miller Street in front of Woolworths) approx. 60m south of the previous location.
- landscaping to improve amenity and encourage activity in the area.
- pianos available for use by the public.

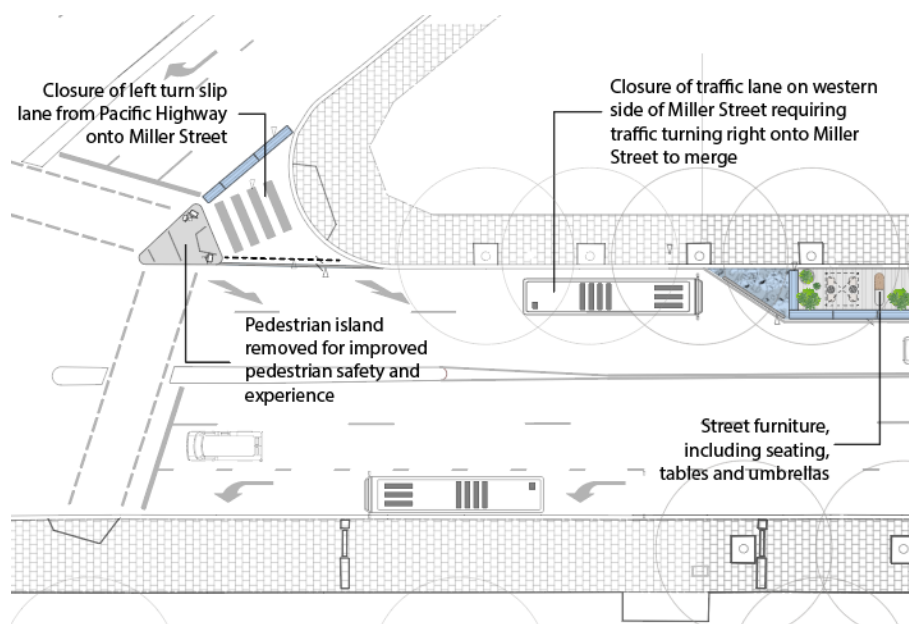


Figure 3. Miller Street Pop-up southern section

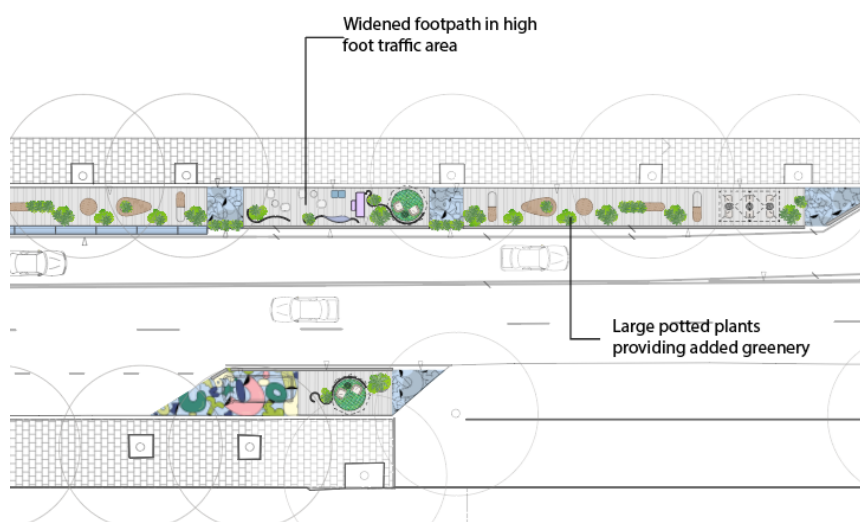


Figure 4. Miller Street Pop-up Northern Section



*Figure 5. Footpath extensions on the western side of Miller Street.*

## **2. Public Exhibition**

Community consultation on the pop-up was planned from 01 October 2021 to 31 March 2022 (182 days), however due to delays caused by COVID consultation was extended to 2 November 2022 (216 days) - a total consultation period of 398 days. 181 submissions were received.

### **2.1 Inform Reach**

The following summary details the methods used to generate widespread awareness of the project and the level of participation/reach.

- North Sydney Your Say webpage - over 1,300-page views, including 175 'engaged' participants that contributed feedback, 349 'informed' participants that viewed the consultation materials provided and 1,000 'aware' participants that visited the page at least once.
- Direct Letter - two letters were sent to impacted properties, the second was a reminder to provide feedback during the consultation extension. A total of 458 properties in the surrounding area were notified.
- Onsite signage - 10 corflute boards promoting the consultation were installed at various locations around the pop-up.
- Social Media - four posts were made on Facebook, three on Instagram and two on Twitter.
  - Facebook post 1, 16 July 2021 - 16 July 2021 4,120 reach, 4,495 impressions, 583 engagements, 46 reactions, 71 link clicks.
  - Facebook post 25 August 2021 - 8508 reach, 8,873 impressions, 519 engagements, 84 reactions, 59 link clicks.
  - Facebook post 13 October 2021, 7,949 reach, 8,662 impressions, 154 reactions, 48 link clicks.
  - Facebook post 25 March 2022 (boosted), 11,854 reach, 18,045 impressions, 3,088 engagements, 47 reactions, 129 link clicks.

- Instagram post, 16 July 2021, 1,818 reach, 1,924 impressions, 69 likes, 16 profile visits.
- Instagram post 25 August 2021, 2,147 reach, 2,288 impressions, 76 likes, 5 comments, 8 profile visits.
- Instagram post 28 September 2021, 2,670 reach, 2,860 impressions, 187 likes, 13 comments, 36 profile visits.
- Twitter post 20 July 2021, 888 impressions, 25 engagements, 7 visits.
- Twitter post 28 September 2021, 910 impressions, 47 engagements, 4 profile visits.
- Council eNewsletter - stats between August 2021 and October 2022:
  - August 2021 - 1,333 total subscribers, opened by 52.59% (701 recipients), 29 link clicks
  - October 2021 - 1,352 total subscribers, opened by 46.08% (623 recipients), 20 link clicks
  - January 2022 - 1,352 total subscribers, opened by 56.95% (770 recipients), 24 link clicks
  - March 2022 - 1,354 total subscribers opened by 57.68% (781 recipients), 12 link clicks
  - October 2022 - 1,371 total subscribers opened by 56.60% (776 recipients), 8 link clicks
- Business eNews - stats for dates within the exhibition period:
  - March 2021 - 675 total subscribers opened by 34.52% (233 recipients), 10 link clicks

## 2.2 Submissions

A total of 181 submissions were received across both consultation periods (398 days).

Of these, 62 submissions (34%) indicated support for the project, 108 submissions (60%) opposed the project, 10 submission (6%) were neutral or undecided.

Of the opposing submissions, suggestions included completely reopening the road or completely pedestrianise the project area (see Attachment A for further details).

Community Sentiment for Miller Street Pop-up

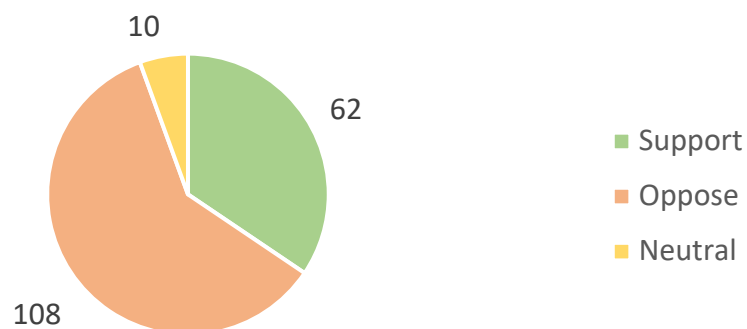


Figure 6. Overall community sentiment for Miller Street Pop-up

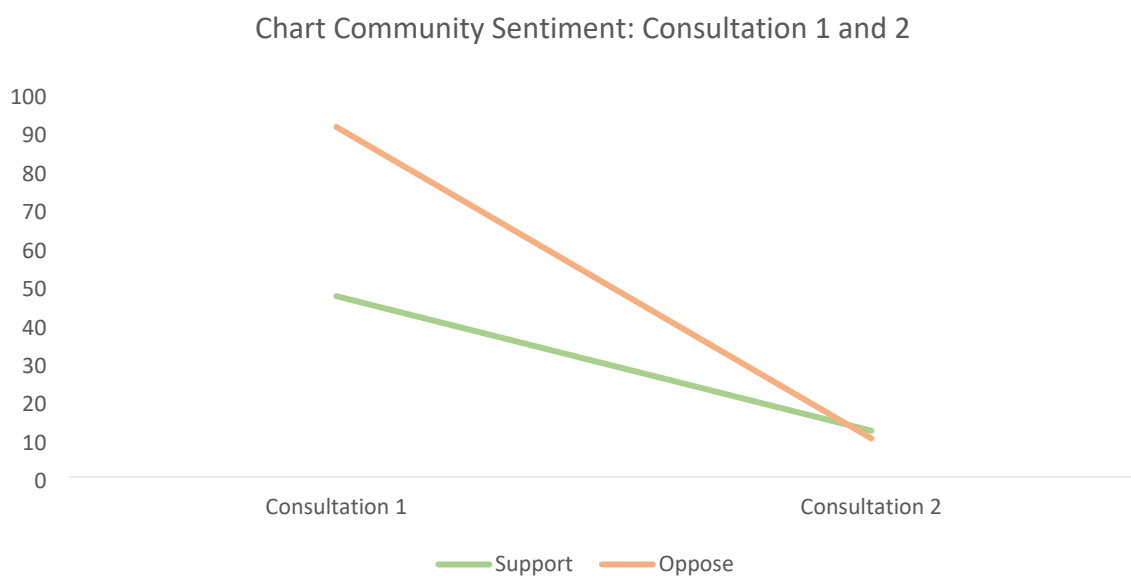
During the first consultation period (182 days), a total of 146 submissions were received.

Of these, 47 submissions (32%) indicated support for the project, 91 submissions (62%) opposed the project, 8 submission (5%) were neutral or undecided.

During the second consultation period (216 days), there was a total of 23 submissions received.

Of these, 12 submissions (52%) indicated support for the project, 10 submissions (43%) opposed the project, 1 submission (4%) were neutral.

NOTE: participants that made submissions in both rounds of consultation have only been included in the overall community sentiment.



*Figure 7. Community sentiment for Miller Street Pop-up consultation one and two. Although there were less submissions for consultation two, more submissions supported the pop-up than opposed.*

The lower number of submissions for the second consultation suggested cooling interest in the project and a swing towards supporting the project. Although both consultation periods were significantly longer than usual consultation periods (42 days), there was a steep reduction in submissions for the second round (123 less submissions).

There are several potential reasons for this change in sentiment, including:

- consultation fatigue;
- differences in actual and perceived impacts of the pop-up;
- the pop-up becoming a natural part of the CBD; and/or
- community not differentiating the first and second round of consultation.

### 2.2.1 Age



A high majority of submissions were made by people aged 35 or older, representing 87% of all submissions. Of this age group, 60% opposed the project, however this reduced to 50% opposed in the second round of consultation.

Although a small sample size, the lower opposition for a younger demographic may suggest more interest for this type of project. Future consultation should attempt to engage a younger demographic to understand potential changing sentiment, especially for young people under 18.

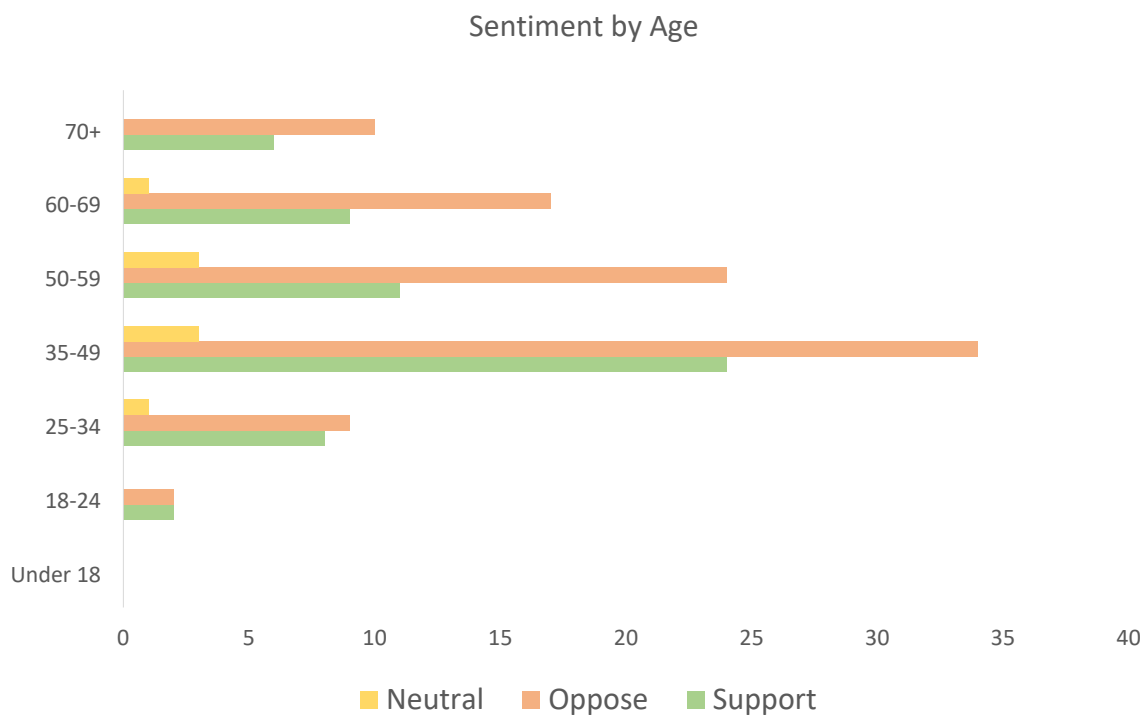


Figure 8. community sentiment for Miller Street Pop-up by reported age group.

### 2.2.2 Key Themes and Issues

The survey included two questions regarding specific aspects of the project. These included:

1. What did you like the most about Miller Street Pop-up?
2. What did you like the least about Miller Street Pop-up?

These submissions are summarised by theme in the table below.

Q. What did you like the most about Miller Street Pop-up?		
Theme	Total	Description
Social/Rest Space	32	The pop-up offered additional space to connect with friends socially or to rest. Multiple submissions noted the lack of this type of space in the North Sydney CBD.
Pedestrianisation	22	Pedestrian safety improvements and re-prioritisation of road space to pedestrians were raised. Submissions also called for the complete closure of Miller Street to road traffic and supported the closure of the left-hand turn from Pacific Highway onto Miller Street.

Q. What did you like the most about Miller Street Pop-up?		
Theme	Total	Description
Green space/Open space	16	Additional plants, greenery and open areas were seen as a positive.
Placemaking	13	The pop-up activated the space and provided a more pleasant, sophisticated 'vibe'.
Street Furniture	12	Seating, tables, umbrellas, and pianos were seen as positive and otherwise lacking in the North Sydney CBD.
Traffic	11	The pop-up calmed traffic and removal of the left turn from Pacific Highway onto Miller Street improved the pedestrian experience.
Q. What did you like the least about Miller Street Pop-up?		
Theme	Total	Description
Traffic	68	The impact of the pop-up on traffic was a common theme. Specific concerns included: <ul style="list-style-type: none"> <li>○ Lane closure on the western side of Miller Street made the street too narrow and exacerbated congestion.</li> <li>○ Traffic turning right onto Miller, from Pacific Highway back up across the intersection.</li> </ul>
Noise/Air Pollution	29	The impact of noise and air pollution on health and user experience were raised as concerns.
Underutilised	27	Anecdotal reports observing underutilisation of the space.
Pianos	22	The Pianos were raised as a positive in theory, however due to weather became damaged and unusable.
Overshadowing/Climate	19	Built form factors such as wind tunnels and overshadowing were raised as negatively impacting the user experience
Location	17	The location of the pop-up was viewed as inappropriate, suggesting local roads or not using road space at all.
Left-hand turn slip lane	16	The removal of the left-hand slip lane onto Miller Street from Pacific Highway was raised as inconvenient.
Parking	15	Opposition to the parking loss associated with the lane removal on the western side of Miller Street.
Bus Interruptions	11	Concerns raised for bus route interruptions.
Cyclist Safety	7	Concerns raised for cyclist safety caused by the removal of traffic lane and resulting lane merging on western side of Miller Street.

Table 1. summary of themes by support and oppose submissions.

### 3. Recommendation Discussion

#### 3.1 Slip Lane Removal

Removal of the left turn slip lane onto Miller Street from Pacific Highway received opposition, but also had support for its positive impact on pedestrian safety. Slip lanes prioritise vehicle traffic and are inappropriate for a high pedestrian area such as the North Sydney CBD.

Removal of the slip lane also aligns to Council's *Transport Strategy Modal Hierarchy*, which prioritises walking over all other modes.

**Recommendation 1.** Considering these factors, it is appropriate to maintain the removal of the slip lane, and Council should formalise the slip lane removal with kerb realignment.

### **3.2 Miller Street Pop-up**

Sydney Metro construction is currently causing major impacts on Miller Street, in particular ongoing footpath closures on the eastern side of Miller Street. As a result, pedestrians are forced to cross the road and travel on the western side of the road.

Recommendation 2. due to significant impacts of Sydney Metro construction on the Miller Street, particularly the intermittent closure of the eastern side footpath, retain the Miller Street Pop-up until at least the end of the calendar year.

The *North Sydney CBD Public Domain Strategy* aims to close this section of Miller Street and create a new plaza named 'Miller Place'. The consultation outcomes from the Miller Street Pop-up can be used to guide the final design for 'Miller Place'.

Recommendation 3. Utilising the consultation outcomes from the Miller Street Pop-up advocate Transport for NSW for the design, development and implantation of Miller Place.

### **4. Conclusion**

Community consultation suggested opposition to the Miller Street Pop-Up, particularly in the first round of consultation. For the second round of consultation there was a slight majority supporting the pop-up.

Due to the ongoing impacts of the Sydney Metro on footpath closure on the eastern side of Miller Street, it is recommended that the pop-up remain in place until at least the end of calendar year. It would then be reassessed, taking into account Sydney Metro construction timeframes.

It is also recommended that the left-hand turn slip lane onto Miller Street from Pacific Highway be retained, and that Council formalise the removal with kerb realignment. A slip lane that prioritises vehicles is not appropriate at this location due to the high level of pedestrian activity and potential for pedestrian/vehicle collisions.

## ATTACHMENT A

### Miller Street Pop-up Summary of submissions received during public exhibition period. (1 October 2021 to 2 November 2022)

The following criteria are used to analyse all submissions received, and to determine whether or not the plan would be amended:

1. The Miller Street Pop-up **would be** amended if issues raised in the submission:
  - a provided additional information of relevance.
  - b indicated or clarified a change in government legislation, Council's commitment or management policy.
  - c proposed strategies that would better achieve or assist with Council's objectives.
  - d was an alternate viewpoint received on the topic and is considered a better option than that proposed or;
  - e indicated omissions, inaccuracies or a lack of clarity.
  
2. The Miller Street Pop-up **would not be** amended if the issues raised in the submission:
  - a addressed issues beyond the scope of the proposal.
  - b was already in the proposal or will be considered during the development of a subordinate plan (prepared by Council).
  - c offered an open statement, or no change was sought.
  - d clearly supported the proposal.
  - e was an alternate viewpoint received on the topic but the recommendation was still considered the best option.
  - f was based on incorrect information.
  - g contributed options that are not possible (generally due to some aspect of existing legislation or government policy) or; involved details that are not appropriate or necessary for inclusion in a document aimed at providing a strategic community direction over the long term.

Miller Street Pop-Up							
SUBMISSIONS SUMMARY (Exhibition Period – 1 October 2021 to 2 November 2022)							
No	Name	Themes	General comments	What did you like the least about Miller Street Pop-up?	What did you like the most about Miller Street Pop-up?	Overall Sentiment	Criteria
1	Walter Miller	Parking	<p>Trent Zimmerman on behalf of Walter Miller:</p> <p>I have received correspondence from Mr Walter Miller of 85 Union Street, McMahons Point, who raised concerns about the reduction of parking spaces in North Sydney.</p> <p>Mr Miller explained that recently council has made the decision to widen the footpath along Miller Street, at the cost of parking on one side of the street. Mr Miller is concerned that there is already a lack of parking in North Sydney and would prefer current parking spaces to be preserved. He explained that similar plans are in place for Blues Point Road, for which he raised the same concern.</p> <p>I would be grateful if you could investigate the issues raised by Mr Miller and I look forward to your response.</p>			Oppose	1a
2	Yee Ooi	traffic, air pollution	Now that traffic has returned to normal (sort of), with the			Oppose	1a

		<p>closure of one lane of Miller Street between Pacific Highway and Berry Street, this funnelling effect has created a traffic jam in this section of Miller Street in the morning.</p> <p>Regrettably, because of the traffic jam, cars turning right from the Pacific Highway into this section of Miller Street, try to get across before the signal changes.</p> <p>This has resulted, during every signal sequence in the morning rush hour, in cars stranded at the intersection between Miller Street and Pacific Highway after the signal changes, blocking the traffic heading south along the Pacific Highway.</p> <p>In addition, cars heading south wishing to turn into Miller Street will now have to turn into Walker Street, then go all the way till McLaren Street, and then turning back into Miller Street.</p> <p>This closure of one lane of Miller Street is a silly initiative, resulting in more traffic jams, more distance travelled, more</p>			
--	--	---	--	--	--

			pollution, more driver frustration, to no one's benefit.				
3	Derek Lath	Parking, left hand turn slip lane	<p>I can understand the motivation for the project, but has there been any consideration of people who work in the offices of 100 Miller Street and use the car park access from Miller St?</p> <p>The changes have made access to the building car park from the North of North Sydney via the Pacific Highway near impossible. There is no clear solution when travelling south for access to the building unless a new entrance is enabled via Pacific Highway.</p> <p>Exiting the building to travel north is also now challenging requiring the motorist to proceed to take a traffic-heavy round trip via Walker Street and McLaren St in order to turn right at either Miller St or Pacific Highway.</p> <p>Can this initiative please be reconsidered based on this structural impediment, or by facilitating a left turn off Pacific</p>			Oppose	1a

			Highway onto Miller St, even if a reduced lane.				
4	Anonymous	Left hand turn slip lane, parking, traffic	<p>the changes to the traffic being able to turn left from Pacific Highway on to Miller street - you have just taken away access to the secure parking driveway that Northpoint building just spend millions of money on renovating, where their visitors, and tenants pay ALOT of money in rent and parking fees to park downstairs in secure parking... i understand the way it was before was terrible where pedestrians piled up on a little island in the middle of the road... but you don't need the island and you don't need to cut off the traffic turning left either. Just remove the island completely!! have pedestrians cross from one side of the road to the other to go to greenwood plaza, they don't need to stand on an island, they don't need a specific crossing for them, they can cross when the pedestrian light</p>			Oppose	1a



			<p>is green. Same goes for them going to the post office... they can cross from one side of the road to the other. having drivers have to drive an extra 20 minutes in traffic around the block to get to their car park under Northpoint is stupid. your just adding traffic to the already busy north Sydney.</p>				
5	Jean Shaw	location, cafes, underutilised, traffic, bus	<p>The Miller Street Pop Up has been a waste of money. It has not added to the enjoyment of North Sydney residents who after all pay their rates to North Sydney Council. The Pop Up is in the wrong place !</p> <p>Why would council hinder the flow of traffic - buses included in busy Miller Street. The Pop Up should have been trialed in Mount Street where there are cafes and takeaway coffee venues.</p> <p>I have observed daily, weekly and at weekends and this current Pop Up is not been utilised. Take it down now and allow traffic to flow normally.</p> <p>On the opposite side of the Pop Up in Miller Street the ridiculous pot plants sitting in</p>			Oppose	1a

			<p>the traffic lane slow down the number of buses approaching the bus stop. There are several buses that use this bus stop i.e. 115, 320, 291, 230, etc. etc.</p> <p>Council Elections are approaching and I am losing faith in the planning ability of this Council.</p> <p>I think it is time for a change.</p>				
6	Judith Shaw	<p>underutilised, location, cafes, Traffic, aesthetic</p>	<p>I object to the Miller Street Pop Up and would like it to be closed even before the 6 months trial.</p> <p>The reasons for my objection are:-</p> <ol style="list-style-type: none"> <li>1. There is minimal useage of this area. I walk down Miller Street several times a day and it is not being utilised.</li> <li>2. It is in the wrong place - should be in a no traffic area i.e. Mount Street where there are several cafes and one can buy a coffee and sit down in comfort..</li> <li>3. In peak hours it causes traffic problem - one lane only on one side of the road.</li> </ol>			Oppose	1a

			<p>4. Aesthetically the pot plants are too big.</p> <p>5. It is a waste of money and does not serve any purpose whatsoever.</p> <p>The elections are coming up and Council should address this problem The Pop Up was definitely put in the wrong area - a busy road in Miller Street - really ???</p>				
7	Max Menzies	Location, safety	<p>Congratulations for cutting grass at Long Gully Bridge. See photo .Job not finished. Please do lantana and weeds next to it on corner Boulevarde.</p> <p>See photos of median strips near Pine Street. I have been asking your council for at least 6 months-probably 12- to remove weeds and detritus from these median strips. No response. A few months ago I removed some at Stocklands but left debris which is still there. There are more weeds to the south too. Reeks of lack of civic pride. There are actually small shrubs and trees in the median strip sides. They are harder to pull out.</p>			Oppose	1a

		<p>Last week Garth or Gareth called me and told me he would report it. Nothing done. This morning I did some but a bit dangerous for a 67 year old. I left the mess for you to clear up. I remind you that roads and rubbish and weeds and streetscapes are a major core responsibility of Local Councils. Much more so than 'Events' which you all seem to love now. Most of them are on the internet. Blame Clover. I do. I regret to say that you are as bad in this instance as WCC. They are shocking.</p> <p>The drainage holes on the Bridge are blocked and it flooded last Thursday. Please don't tell me it is RMS. They are useless. Please just do it. Please remove rubbish from on and off ramps from Miller Street to Freeway. Again RMS useless. Please give me any contact details that you have for RMS.</p> <p>I hope you are going to remove those 'pop up ' cafes in Miller Street.</p>			
--	--	--	--	--	--

			<p>Ridiculous location and dangerous. Might as well put them on the Pacific Highway or Harbour Bridge!</p> <p>Please circulate this email to all staff and councillors not shown above.</p>				
8	Anne Hamilton	Traffic, safety, air pollution, aesthetic	<p>Dear Council, I live in Milsons Point and I would like to register my vote against both the Burton and Miller street changes into coffee pop up venues.</p> <p>The Burton Street coffee pop up is visually gauche and gaudy and in no way consistent with its immediate surrounds. The bright blue would be more appropriate to a beach side coffee environment. This extra space is certainly not a space I would choose to meet my friends for a coffee and I would prefer if it were reverted back to a through -road for traffic.</p> <p>The Miller Street pop up is a disaster for traffic and makes the drive up Miller quite dangerous, difficult to negotiate and very slow. This pop up area doesn't invite one</p>			Oppose	1a

		<p>to sit and drink coffee alongside struggling traffic and exhaust fumes.</p> <p>Both pop up venues are unsightly and lack environmental consistency and lack sophistication in design.</p> <p>If the council is looking to improve our neighbourhood and improve its liveability I would think managing the aggressive car and motor bike revving under the tunnel on a Friday and Saturday night would be more appreciated. We are regularly woken to aggressive noisy senseless revving of engines every week after 11 pm every Friday and Saturday nights.</p> <p>The already established coffee venues are adequate without streets being closed to traffic and painted a gaudy bright blue .</p> <p>I hope you will take my opinion into consideration when you make your decision about the future of both Burton and Miller streets.</p>			
--	--	---	--	--	--

9	Christpher Mclelland	Traffic, parking, noise pollution, air pollution, overshadowing	<p>To spend any further money on this project would be a wasteful and ineffective use of Council resources. This is because it is in direct conflict with NSC and State Governments other planning objectives.</p> <p>The CBD strip of Miller Street (between the Pacific Highway and Berry St) has always been envisioned in planning terms to be an opportunity to intensify high rise commercial development. Moreso in recent years, particularly with the Metro development and schemes on the drawing board. Shop frontages have progressively given way to lifeless corporate lobbies, and car park and service entries because of the ready vehicular access from major traffic routes: the Pacific Highway, Warringah expressway, the Harbour Bridge and soon North Connex.</p> <p>Miller Street is an already important conduit for traffic from the CBD, Kirribilli, Milsons Point and McMahons Point heading north, west or further afield. Usurping one lane of</p>			Oppose	1a
---	-------------------------	--	--	--	--	--------	----

			<p>Miller Street and restricting traffic access turning left from the highway serves no effective purpose:</p> <p>§ It is highly disruptive to traffic (as has been demonstrated by the lane closures during construction of the new high rise towers).</p> <p>§ Removing short term parking will inconvenience locals, particularly the disabled, and deprive some of the few remaining shopfront services providers there of customer access.</p> <p>§ It does not create a conducive environment for outdoor dining or entertainment, immediately alongside the noise and emissions of heavy transport and petrol vehicles and at the foot of a 200m or more deep canyon that can only momentarily enjoy sunshine.</p>				
10	Vilma Bowers	Underutilised, aesthetic, parking, left hand turn slip lane	<p>Dear Sir,</p> <p>As a local resident I would like to provide my comments in relation to the installation of the temporary pop-up public space in Miller Street.</p> <ul style="list-style-type: none"> <li>• I pass this area on a regular basis and notice a lot of money</li> </ul>			Oppose	1a



			<p>has been spent and it is rarely used.</p> <ul style="list-style-type: none"> <li>• The look of it is aesthetically unpleasing to the eye.</li> <li>• With the installation of this seating area, it has meant great inconvenience to the local residents, as the disabled parking and other parking spaces have been removed which is in front of the majority of the banks in North Sydney.</li> <li>• Also the closure of the left turn lane from the Highway to Miller Street is also another inconvenience for motorists.</li> </ul> <p>Can I suggest that this be removed as soon as possible to make life a little easier for the long suffering North Sydney residents.</p> <p>Vilma Bowers</p>				
11	Jennifer Watson	traffic		We should not be giving up public roads to create open spaces. New developments should be required to have open space at ground level for public use. ( as happens in New York City)	Nothing	Oppose	1a
12	Jo so	traffic, left hand turn slip lane		Less space for car lanes, blockage on the left turn is inconvenient. Traffic in	None yet	Oppose	1a

				north sydney is busy enough. I don't see why we need a pop-up if pedestrians never needed more walking space before			
13	David Gorham	Cyclist safety		Takes away a critical lane for cyclists heading north on Miller Street. This is a pinch point at the best of times, so reducing the space creates an unsafe environment for unprotected road users	N/A	Oppose	1a
14	Lori Jenkins	Traffic, cyclist safety, cafes, location, traffic	How a pop-up of this size could be placed in such a busy and congested area of a CBD I can't possibly imagine? Lovely idea, terrible execution, did anyone do a traffic flow study? Bicycles cannot pass cars, making it even more dangerous. This is the most ridiculous and disruptive thing to have been forced upon North Sydney, it needs to go ASAP! There aren't even any cafes or restaurants next to the pop-up...how was this location possibly chosen? It makes no sense at all. Why were we not consulted as residents on the impact it might have on us? There are at least half a dozen other places in	The pop-up is blocking traffic, taking extra time to get through North Sydney and generally causing chaos, it's a nightmare at the best of times, this is the worst location.	The idea in general is great, however the location is possibly THE WORST LOCATION EVER!!! The traffic on Miller Street is congested to say the very least, the trouble that this pop-up is causing is HUGE!	Oppose	1a

			<p>North Sydney that I can think of that would've been a better location, and wouldn't block a major road, who chose this? How on earth was this approved? It now takes an additional 2 to 4 light changes, depending on the time of day, to get through from one side of the five ways intersection on Miller St to the other side of the intersection between Miller St and Berry St, this is absurd and ridiculous. Why would anyone choose to put this additional strain and stress on people, it's hard enough getting through North Sydney as it is, please please remove this pop-up soon as you possibly can. Shouldn't we be trying to make things less stressful and easier on everyone, not more stressful and time consuming.</p>				
15	Robert Lording	<p>traffic, air pollution, noise pollution, business activation, traffic, underutilised</p>	<p>This survey is a disgrace as it appears to be designed to achieve a favourable result rather than properly canvas a range of responses.</p> <p>The impact on traffic through the area will be considerable with consequential impacts for residents in the area right</p>	<p>This is a complete waste of money, with little use during either business or after hours and will create a significant traffic disruption as vehicle traffic increases after Covid restrictions are eased. An abjectly stupid idea!</p>	Nothing	Oppose	1a

			<p>through to Crows Nest. In observing the area for several weeks, it is rarely used and, while nicely furnished, it is not an enticing place to sit next to traffic and it isn't in proximity to a cafe etc to readily access drinks/meals.</p> <p>This concept is an absolute failure - it would have been better situated at the front of the MLC building. The overall proposal to have a permanent plaza is ludicrous</p>				
16	GARY	pedestrian safety, social/rest space, left hand turn slip lane	<p>I am now forced to go down to walker Street and come back to get into car park. Also need to use walker now to get onto freeway. Making me spend more time on the road, in more traffic with more pedestrians around.</p> <p>This is not making things any better for pedestrian safety. Granted closing the slip road is a good idea. But left us turn left at the lights like normal people. Allowing people northbound turning right makes it abundantly clear that pedestrian safety isn't the reason left turn is blocked.</p>	<p>No left turn from Pac Hwy making it absolutely ridiculous to get into work car park coming southbound or back to freeway northbound. Whoever thought it was a good idea blocking left turn needs their head read. Block the slip ok but let us turn left</p>	Seating area	Oppose	1a

			<p>Heck, ad a left turn arrow on the lights.</p> <p>Also what happens to the carpark entrance of you decide to make it a mall? Next time put the proposal to the actual users of Miller Street instead of some ideological nonsense enforced on us to tick boxes.</p>				
17	B Masel	street furniture, pianos, overshadowing, greenspace		The ugly chairs. The sad faux artsiness in the form of the upright pianos in the rain. The failure to understand how unpleasant it is to sit underneath the shadow of an office block with no green space.	Nothing. I don't think it adds to the amenity of North Sydney.	Oppose	1a
18	Warren BONES	underutilised, bus interruption, cyclist safety, parking	<p>Honestly, I don't see the point of this when there is the nice strip of lawn on the opposite side of Miller St that at least gets some sun. How about putting some tables and chairs on that so people can use it? Also, as someone who cycles to work most days, having to deal with buses and cars merging to get around the pop-up is quite harrowing in evening peak hour, to the extent that I've started walking my bike up to</p>	<p>1. It is on a little used section of footpath. 2. It wreaks havoc with the buses in PM peak hour. 3. It feels a lot less safe for cyclists. 4. It takes away several very handy parking spots used by locals on weekends.</p>	Nothing	Oppose	1a

			Berry St on the footpath before riding up the hill.				
19	Don Napper	Pianos, greenspace, underutilised	This has proved to be a serious waste of money as it is not used as say, the Mount St Plaza is so well used. The 2 pianos are not used at all this has a very different ambience from the Coal Loader where the single piano is played on by children. The concept of a mall in Miller St is just silly and unnecessary.	The fact that it is so poorly utilised. Most of the time it does not have anyone using it.	the greenery	Oppose	1a
20	Gillian Napper	greenspace, business activation	I am deeply concerned about this initiative. I believe it went forward without proper local consultation, and reflects a common pattern of spending behaviour with this Council. The passage of the buses through the area past the new station must be addressed if there is to be a plaza. I walk past the popup often and have rarely seen anyone sitting there. Nor heard the pianos!	It is a foolish waste of money - the loss of traffic flow and parking, the fact that there are no adjacent coffee shops and the huge expense are extremely worrying.	The green plantings in the street are attractive but the loss of traffic lanes and parking is not justified	Oppose	1a
21	Judith Cox	traffic, air pollution, noise pollution, underutilised, traffic, social/rest space	I have some serious concerns about the outdoor eating area on Miller Street. Was any consideration to the exposure of people to air pollution given before installing these areas?  The science and knowledge around the detrimental health	I have serious concerns about the exposure of staff and customers to air pollution.	outdoor eating	Oppose	1a

effects of exposure to emissions from road traffic have become more and more widely known in recent years. This is especially true of exposure to emissions from diesel vehicles. As traffic moves back to pre-COVID levels I also expect the congestion to increase due to the removal of one traffic lane to accommodate these areas.

To this end I am really concerned that the Council has put these outdoor eating areas adjacent to a major road that is often very congested ,and has many diesel buses and heavy vehicles using it. Not only that, but the road also has high rise buildings on either side which will act like a canyon and trap the air pollution.

Anyone sitting in these outdoor eating areas will likely be exposed to elevated levels of air pollution for the duration of their stay, and the people working at these businesses will also be exposed.

I would highly recommend that some ambient air monitoring is

			completed to determine the levels of air quality in the area to determine if they are at a level that would cause concern - noting that when considering particulate matter, there is no safe level as health effects are observed even at very low concentrations				
22	Alan Parton	traffic, underutilised	One of the busiest street has been reduced to a single lane in an attempt to please non-existent customers. Bad case of planning on councils part.	Takes up space, disrupts traffic to the point of being dangerous (traffic backs up to, and across, the junction) I pass on a regular basis and dont see more than a dozen people using it.	Nothing	Oppose	1a
23	Isabel Tran	left hand turn slip lane, parking, air pollution, noise pollution, location, traffic	As both a local resident and an employee working in North Sydney, I find the Pop up in Miller Street problematic and ask that Council remove it after the trial period. While the idea is a nice one, the location has had negative impact on a number of grounds 1) not being able to turn left into Miller Street from the Pacific Hwy pushes traffic down already other congested streets like Walker and Blue - and unnecessarily prolongs and builds traffic in that general area 2) lack of parking on Miller	It's location - it's location is not thought through and is a hinderance for traffic as well as for foot traffic	I do not like it and encourage Council to remove it	Oppose	1a



			<p>Street means that particularly in the morning, there is nowhere for traffic to safely stop in that vicinity, as the Pacific Hwy does not allow traffic to park until after 10am, thereby causing risk where someone needs to alight or park in the area 3) similarly, the location of the Pop up and the removal of parking on Miller Street detracts from the existing commercial businesses such as Woolworths and Eat Street which can no longer be visited with ease because of the lack of available parking 4) the Pop up itself is located next to a noisy, dusty main road which is also a major bus route such that the noise and ambience does not invite sitting or communing with others (to say nothing of COVID) 5) further to the last point, the Pop up is very close to a construction site for the metro station (unlikely to be completed within the next 12 months) as well as nearby major works at Monte (also likely to continue for 18 - 24 months). The noise and dust makes the overall ambience unpleasant and and not the appropriate location for this</p>			
--	--	--	--	--	--	--

			Pop up. Council should remove it after the trial period to facilitate traffic and people flow down this section of Miller Street.				
24	Penelope Morris	pedestrianisation, traffic, air pollution	Turning that section of Miller St into a no traffic zone may be worthwhile assuming coffee shops etc open up once railway station established and assuming people return to work rather than continuing to work from home. If we don't close the street completely, then it would be better to utilise the green area in front of the building at the corner of Miller and Mount streets.	Traffic just got stuck with lane blocked Pop-up next to diesel fumes from buses trucks stalled at lights.	Nothing - nice idea but wrong location: wrong street, no cafes in immediate area.	Oppose	1a
25	Victor Kwong	Left hand turn slip lane, pedestrianisation, traffic	The traffic restriction to turn from pacific highway in Miller Street has caused lots of inconvenience.	It affects the traffic in a busy street.	It provides additional spaces for pedestrians to use on the street.	Oppose	1a
26	S. J. Harrop	Overshadowing, street furniture, pianos		The lack of understanding about the context for the pop-up. Surrounded by a canyon of tall buildings, and the Metro building site, is a very unwelcoming space. Tacky, uncomfortable furniture and a mouldy piano in the rain. It's sad satire.	I can't think of anything.	Oppose	1a

27	Sonya Braden	Traffic, underutilised	Please keep Miller Street open for traffic. As I've said I have never seen anyone sitting there, on either side. I drive by at least 4 times a DAY.	I have been held up in traffic so often, I can't believe it. I have NEVER seen anyone sitting there! Waste of space.	Absolutely nothing	Oppose	1a
28	Janette woodward	Traffic, noise pollution, air pollution, underutilised	I think the pop up seating on miller street should be removed  - its is an unpleasant place to sit as it is so close to the traffic and opposite a major building site  - its causes traffic problems by reducing miller street to 1 lane  - not may people seem to use it so it is causing traffic problems for no real benefit  thanks for your consideration	unpleasant place to sit, close to traffic, opposite building site	n/a	Oppose	1a
29	Ian	Traffic, parking, bus interruptions, left hand turn slip lane	Waste of money and road space. Who thought of this plan???  Absolute waste of money and of no benefit to Nth Sydney residents or rate payers. It cause unnecessary traffic issues and compounds traffic by taking away valuable parking spaces and restricts bus movements.	Taking away left turn from pacific Hwy, removing of parking and loading zone, bus congestion.	Nothing	Oppose	1a
30	Laurie Mather	Social/rest space, traffic		I have serious concerns about the loss of traffic	Providing an outdoor sit and eat space	Oppose	1a

				way that will become more significant when the tunnel developments become more advanced			
31	Anne Lazberger	Noise pollution, traffic	Waste of money. Stupid idea.	Everything. Why would you want to sit next to a busy road opposite a construction site. As a ratepayer I am appalled that money is wasted on such a ridiculous concept	Nothing. It is ridiculous	Oppose	1a
32	Dr. Clive Williams	Traffic, parking	See above	Restricts traffic flow and parking	I oppose the continued existence of this pop up arrangement as it is a serious interference to traffic flow and limits parking in an area already served for parking.  Don't like it	Oppose	1a
33	Christine Egan	Traffic, noise pollution, air pollution	As above I do not want the street blocked at all due to the traffic delays it creates. Also - who would want to sit beside traffic and eat their lunch.	The TRAFFIC CONGESTION it causes heading nth frm McMahons Pt to the turn off at Berry- impossible to get through at peak hour as only one lane. I now avoid area and travel up William St, across Mount St and then on to Pacific Hwy	NOTHING- blocks traffic and causes delays.	Oppose	1a
34	Sharon Schach	Traffic		Everything. Worst is losing the traffic lane.	Nothing	Oppose	1a

35	Sarah Michael	Traffic, design quality, underutilised	Think this has been a disaster	Thought it was tacky, severely impacted traffic flow Rarely saw anyone use it	Nothing	Oppose	1a
36	Anelida Pardini	Location, parking, street furniture, social/rest space, traffic, underutilised, parking	This is a good idea just in the wrong location and this is a major through road and it limited parking access to Woolworths and was not heavily utilised as it was on a busy road	Blocked lane of traffic, was not heavily utilised and removed car parking spaces for Woolworths	Outdoor seating area whilst covid limited indoor spaces	Oppose	1a
37	Benjamin D'Agostino	Underutilised, parking, traffic	I've not seen one person on north sydney living support the pop up. It was a dumb idea that wasn't thought through.	It was an idiotic idea. Nobody uses it, you've taken away all the parking outside woolworths metro, you took away the left hand turn onto miller from pacific which causes traffic build up and is just an overall inconvenience. I	Nothing.	Oppose	1a
38	Jill	Traffic	See previous responses	Impact on traffic and disruption to main North arterial from Nth Sydney.	Nothing. There is nothing pleasant about sitting right next to traffic plus the no left turn at Pacific Hwy is very frustrating.	Oppose	1a
39	Katherine	Underutilised, pianos, location	I live in North Sydney and work on Miller Street. This pop up is laughable. No one is there except for the tradies working on the building sites who use it to rest gear or take a seat. It makes the already dead Miller	The ridiculous positioning outside Woolworths and the pianos	Nothing	Oppose	1a

			Street seem ghostly - especially with those ridiculous pianos - !				
40	Sarah Miller	Traffic, pedestrianisation, aesthetic, left hand turn slip lane, parking	<p>This pop up and proposed road closure including the no left turn from Pacific Hwy has caused traffic congestion, unsafe pedestrian areas, street clutter, rotting street furniture (including pianos), lack of ease to secure carpark Miller street.</p> <p>As a retailer who needs access to Miller street and secure carpark for business purposes this is a nightmare and will crush us.</p>	The no left turn into Miller street from Pacific HWY traffic chaos... extremely hard for retailers needed the secure carpark facility	Rubbish bins and ashtrays installed on Miller street	Oppose	1a
41	Laura Wuellner	Traffic, underutilised, left hand turn slip lane, underutilised, wind, user experience	I think there is not enough benefit gained for blocking the lane, moving the bus stop etc. No one seems to sit there.	The seating area is rarely occupied and it's a wind tunnel. It seems like there is no ambience sitting there and a complete waste of space.	The safety of the pedestrian island not overflowing	Oppose	1a
42	V Giacomazzo	Traffic, pianos		The traffic congestion it causes. The pianos are also constantly out of tune. Instruments like that are not designed to be left out in the elements.	It's a good idea in theory however not executed very well. A less busy part of North Sydney could have been chosen.	Oppose	1a
43	Patrick	Location, noise pollution, wind, location		There's been no thinking behind where this idea has been installed and how it impacts the	Nothing	Oppose	1a

				suburb. There's also nothing attracting people to use the area. It's a busy main road and a wind tunnel and we are trying to encourage people to relax there?			
44	Robert Parkman	Left hand turn slip lane, location, underutilised	<p>The whole idea that the pop-up in that section of Miller St would benefit anyone is ludicrous. It has stopped any access to that end of Miller St from the Pacific hwy, which I found very useful. As far as I'm concerned the whole idea was a waste of ratepayers money.</p> <p>There must be other areas around North Sydney that would benefit much more from a Pop-up Plaza.</p> <p>Please give us back out left-hand turn access from the Pacific hwy into Miller St</p>	dii didn't think it served any useful purpose	I didn't think it served any useful purpose	Oppose	1a
45	Margaret Hamilton	Traffic, pianos	<p>Please please please do not make Miller St pedestrian only. It is hard enough living in this construction zone without wrangling traffic jams caused by narrow road</p>	<p>Reducing the north traffic lane just added more and more congestion to a busy thoroughfare. Funneling traffic into Walker St is adding to the chaos..along with the interminable building sites in Miller and</p>	Nothing	Oppose	1a

				McLaren St. The poor pianos left in the weather w			
46	John Gray		Change it back!!!! No pop up , no extended plaza. Stop trying to create ridiculous zones in the middle of the CBD	Everything. Waste of space and money! No one uses it	Nothing! Ridiculous stupid idea that needs to revert back asap	Oppose	1a
47	Vikki	Traffic, location, traffic, noise pollution, wind, business activation	Extend Whitely place and close Mount at through to Walker. Closing Miller st is a traffic nightmare.	Wrong location - caused traffic issues with back up of traffic during peak times. Noisy and windy. No cafe amenities nearby. If this whole strip is closed off the right turn lane into Berry from Pacific will be a traffic jam.	Council recognising we needed more community areas.	Oppose	1a
48	Eva Gao	Traffic, bus interruptions	The Miller st has a lot of traffic all time including a lot of buses, the popup is making the street more congested. Please remove it And keep Miller St wide to help with the traffic.	It is causing bad traffic to the busy Miller street and also affecting the buses.	Nothing really.	Oppose	1a
49	Name and address withheld	Pianos	As I said earlier, I don't want my name used or anything that identifies me for my own personal safety but you can use my comments if you need, just don't identify me please. Thanks.	As above, but probably the grotty and tattered pianos. Sad to see them like that.	Sorry but I didn't like any of it. The wind howles down there, the traffic is heavy and I got caught in the rain with the pianos but there was nowhere sensible to go because the space was taken up with obstacles. Sorry.	Oppose	1a
50	Louise k	Traffic, bus interruptions,	This has been terrible for traffic and for buses. There has also	The smell and disruption of traffic	Some extra seating	Oppose	1a



		social/rest space, air pollution	been significant rain damage and general unpleasantness to the area. There's many other things that can brighten up an area. I'm usually quite positive about efforts the council puts in to improve community experience and reduce traffic however this is not it. Please don't make it permanent.				
51	Annie Margosdian-Kenny	Underutilised, pianos, traffic, underutilised, location	Your survey questions assume everyone likes it. The use it got was negligible compared to the issues it caused. It was poorly located. Would be better if it was in an area where people find it inviting to sit and hang out. On the side of a road in front of a Woolies - what were you thinking.	The pianos were nice for a couple of weeks then look like rubbish. The traffic chaos it causes was not worth it - no one uses the space. Poorly located	Nothing really	Oppose	1a
52	Daniel	Traffic, underutilised	I do not wish to be trapped in my home in Lavender Bay by traffic delays on miller street banking back to Blues Point Road. This is where I live. This road is a major thoroughfare for anyone living in Lavender Bay, McMahons Point and Blues Point. I agree I shouldn't need to drive through the North Sydney CBD to get to the Cahill Expressway North and South from my home, so come up with a proper solution to	It's not utilised as a pop-up and is a total white elephant and blocks the road.	Nothing, it makes no sense - it's a road.	Oppose	1a

			that - what compensating traffic flow measures will you be putting in to make up for the closure of Miller Street? Closing Miller Street in isolation of a proper solution will be a total nightmare.				
53	Katrina Anderson	Traffic, location		Traffic congestion, irrelevant location of recreation space. No mindfulness in that location.	Nothing	Oppose	1a
54	Malcolm Treanor	Underutilised	Ill conceived waste of money that added no value. Just cut back on the volume of construction and plant a few trees.	Served no purpose except to provide smoking benches for the tradies.	Nothing.	Oppose	1a
55	Briony Tyquin	Traffic, left hand turn slip lane, parking	Whilst i understand that the new metro station is being built here, it cuts the road access to Cammeray, pushing it onto local roads. Unless council/government can do something about traffic at top of Alexander St ( this is already a bottle neck ) and Walker St which are both meant to be quiet streets.	No left turn from pacific hwy, no parking in this section of Miller st	Nothing	Oppose	1a
56	Fleur Dickinson	Lack of disabled parking, underutilised	Such a waste of money/ resources/ time	All of it. It took away parking, you could have converted those spots to disabled parking of which there is NONE in North Sydney. No one uses it,	Nothing	Oppose	1a

				I've maybe seen 10 workers from the construction site opposite use it for a smoke, in 6 months.			
57	Sheryl Campbell	Traffic, parking	Seems a complete waste of money and reduces the traffic flow drastically. N Sydney is already a congested area and very few people stay in that area for entertainment as it is not friendly to motorists. Parking is expensive and hard to find.	Curtailed the flow of traffic trying to turn left off Pacific Highway into Miller St.	Did not like it.	Oppose	1a
58	Sandra mainolfi	Traffic, left hand turn slip lane	This pop up and the road closure in neutral bay for seating was the main reason I voted against the incumbent . It showed a total disregard to the community and it's needs.  I'm against any closure of that part of Miller st. As a resident of Cammeray and I work in north sydney I am directly impacted and there is no improvement	No left turn from pac highway and wasted use of a lane	Nothing it's a total waste of money	Oppose	1a
59	Judith Treanor	Traffic, no cafes, pianos		Everything. Blocks traffic. There's no restaurants serving food or alcohol direct to this area. Who needs pianos outdoors with nobody playing them ?	None of it. Ridiculous	Oppose	1a

60	Victoria	traffic		Increased traffic which has caused massive delays		Oppose	1a
61	Claire	Traffic, left hand turn slip lane	The backlog of traffic doesn't work with the road closure. All it takes is an accident on the freeway and it makes north Sydney congested. Having one lane entering miller leaves buses blocking the pacific highway miller street intersection... it's chaos at 3pm	The no left hand turn from pacific highway!	The rubbish bins , as there was no rubbish bins around earliee	Oppose	1a
62	Emily Jaques	Pedestrianisation, traffic	Making miller street permanently closed to make a pedestrian thoroughfare would be disruptive to traffic to North Sydney and its surrounds. The daily traffic coming up from Blues Street is already shocking, I can't imagine if that street was closed altogether.	Traffic	Pianos	Oppose	1a
63	Hera McCaffery	Aesthetic, traffic, noise pollution, traffic		Causes major traffic congestion, blocks access to shops including Woolies Metro. I hardly ever see anyone sitting there as it's noisy and right next to the traffic.	It's nicely landscaped	Oppose	1a
64	Name and address withheld	Traffic, underutilised	It was tragically under-used. A handful a tradies a day MIGHT have used it. It's on a main thoroughfare, in a wind tunnel, this isn't the space for this.	Traffic congestion. Never used! A space like this should be included in the station upgrade directly opposite	Nothing	Oppose	1a

			Once the station construction is finished no one will use it.				
65	Daniel Murphy	Traffic, location, underutilised		It was not a great location in terms of somewhere that people would want to stop and linger. Covid/lockdown aside, I don't recall ever seeing anyone sitting there.	It looked good and it discouraged vehicles.	Oppose	1a
66	Miranda	Noise pollution, air pollution, piano	Wrong place to have this. Who wants to sit beside a main road and a construction site when there is a pedestrian area across the road	All of it - looks liked dumped pianos, concrete barriers	Nothing	Oppose	1a
67	Koren Duigu	Traffic, left hand turn slip lane, parking, underutilised,		Caused traffic issues, removed turn left from pacific highway, remove parking spots, rarely used by local and workers in the area. All these factors have impacted and made this area low on foot traffic and ability to access to stores on that strip.	N/A	Oppose	1a
68	Rudolph	Traffic	The fact road closure is a drop down box option, should illustrate how much the community is frustrated with this Stalinist decision to unilaterally shut down miller street. I don't know when 2060 became the postcode for the Kremlin.	If you could just video tape and watch how congested the right turn from pacific highway get to now a redundant single lane you would see reason in this chaos.	Nothing	Oppose	1a

69	Rhianna Isgrove	Location, left hand turn slip lane	While the concept is admirable, it would be much better Executed in a more pleasant and quiet street where wheelchair or elderly access to Woolworths is not impeded	Took away parking access to Woolworths and I turn from pacific highway	No thing	Oppose	1a
70	Name and address withheld	Overshadowing, wind, noise pollution, air pollution	See above. Please return this street to traffic both ways	Poor location - no one wants to sit outside there shaded by buildings, in the wind tunnels and with noise & dust from the metro construction and normal traffic	At least you tried	Oppose	1a
71	Nicola	Aesthetic	The pop up is a total fail. Scrap it and fix it. I don't care around the road closure, that's your prerogative but you need to know how ugly this junk on the side of the road is.	Everything! Such a low effort non-attempt at "public space" I didn't know the council was behind it, I thought it was some feral restaurant owners idea and the business had gone under leaving all this rubbish on the footpath.  It is so ugly, unkempt, unwelcoming and an eyesore. It's completely half arsed and gross	Nothing. It is so ugly, unkempt, unwelcoming and an eyesore. It's completely half arsed and gross!	0	1a
72	Corina Raduescu	Noise pollution, location, overshadowing, wind, greenspace, street furniture	Where it is now, it is mostly used by tradies and office people. You have to think about the overall feeling of the place. Who can enjoy such a noisy place? Plus all the construction	It's in the wrong place. It is, dark, cold, has no sun, lot of heavy noise from traffic, barely anyone used it. It's on the wrong position and it was	The plants and decor.	Oppose	1a

			noise that is awful - we have to live with it for years.  This pop-up plaza is soulless. To create a community feeling, you need to find a location where people will go to relax and is warm. There is barely any sun there. It gets very windy because of the wind tunnels caused by high rises. The wind tunnels are terrible in North Sydney. Do proper research and walk on that street - ask yourself as councillor if you would stay in that noisy dark place. It was deemed a failure from the start bc the location is so wrong.	obvious to a few residents I talked that it won't work.			
73	Michelle Burke		Hate it, does not enhance the area. Terrible idea.	Everything	Nothing	Oppose	1a
74	Anonymous	Traffic, safety, pedestrian friendly, bus interruption, air pollution	Reopen the road	How it contributes to congestion and makes it more difficult for bus drivers to pull in. It's also not pleasant to sit at due to the fumes from passing vehicles.	It's made it a bit safer for pedestrians crossing the street.	Oppose	1a
75	Greg	Traffic, underutilised	No one uses it during peak traffic time and it has caused traffic grid lock back to high st and beyond. Clearly no real research done prior to implementation	Traffic grid lock it has caused	Nothing really	Oppose	1a

76	Ania Bokina	Pedestrianisation, location, wind	I think Walker Street is more of a hub in North Sydney and would be more suitable to being made more pedestrian friendly	It seemed to be in the wrong place, given the current street configuration. The spot was a wind blown, traffic-heavy spot with not many other amenities around it. North Sydney does need more pedestrian spaces - but winter close all of Miller St or none.	I like the fact that, for once, more space rather than less was given over to pedestrians	Oppose	1a
77	Martin Choy	Location, underutilised, aesthetic, pianos	<p>This pop up is currently a complete waste of time. People generally speaking don't like walking far and with the lack of adjacent restaurants the usage is low even with the food court not far away.</p> <p>Brett Whiteley place has way more usage with what worse facilities.</p> <p>This is NOT a case of build it and they will come. Further to this with no night life there is no reason for these kind of gathering places. Plaza work in other areas with high foot traffic.</p> <p>There is no major shopping centre. I dont count greenwood as a major shopping</p>	Complete waste of money, not effectively utilised at this point. Close seconds was the pianos and the lack of foresight in placing them there with regards to maintenance of them	Some of the infrastructure is of a decent standard	Oppose	1a



			<p>centre, maybe if it had a big department store and a lack of entertainment facilities (although im not convinced the roads and parking would cope with either of those two) and good eating in the immediate surrounds.</p> <p>But even then the surrounding restaurants, they are not packed enough to require a gathering spot for patrons while they wait for their bookings to become available.</p> <p>Anyway these are just my current impressions maybe things will change. But at this point i dont see it happening.</p> <p>From the perspective of a night life, i dont see jamming more office buildings as useful.</p> <p>The demolition of Tower Square was a massive dis-service to the area :(</p>				
78	Robert Thomson	Traffic, bus interruption, wind, noise pollution, pianos, safety	<p>I will provide my comments in two parts.</p> <p>Eastern side of Miller Street: This pop-up construction has been a complete waste of time.</p>	Please see my attached comments	Nothing. I think the whole thing has been a waste of time	Oppose	1a

I have never seen anyone using it. Moreover, it has been causing significant traffic congestion during the morning peak hours. The pop-up takes up so much of the kerbside lane that it is now difficult for more than one Milson's Point-bound bus at a time to pull into the appropriate bus stop. As a result the Milson's Point-bound buses are forced to stop at the City-bound bus stop. This causes a bank up of the City-bound buses, which cannot pull in at the bus stop to unload and load passengers. I have personally watched as City-bound buses are delayed through 5-6 changes of traffic lights. It causes traffic congestion across the intersection, and delays to passengers awaiting City-bound buses.

I strongly advise that Council completely remove the pop-up structures on the eastern side of Miller Street.

Western side of Miller Street:  
Again, this pop-up construction has generally been a waste of time. It does not get much use

as it is exposed to the elements, particular the wind-tunnel effect of Miller Street. It is also very noisy with the northbound traffic passing so closely by. The two pianos – which I note have recently been removed – were completely ruined by being left outdoors and exposed to the weather. Such a waste and utterly predictable. There have also been morning peak traffic congestion issues. The closure of the kerbside lane has led to significant backing up of traffic turning right into Miller Street from the Pacific Highway. This spills over onto the intersection. It also forces pedestrians who are trying to cross Miller Street to thread their way in and out of the stationary cars. It is an accident waiting to happen.

I strongly advise that Council completely remove the pop-up structures on the western side of Miller Street. Perhaps one or two of the smaller, less obtrusive pot-plants could remain to beautify the footpaths.

79	Chris Holding	Location, safety, air pollution	Awful location.	A fun design in an awful, polluted, noisy and dangerous location far too close to major traffic. A waste of money for such a small space when there are safer and more deserving locations in our LGA. This was not properly consulted with the community.	Nothing.	Oppose	1a
80	Bridget Bobkowski	Traffic, left hand turn slip lane	It is generally VERY difficult to turn left in North Sydney/Crows Nest precinct when there are two lanes and high pedestrian activity. Example 1: uphill on Shirley Road turning left onto Pacific Highway, usually one to two cars make it through the lights. Example 2: Ridge Street turning left onto Miller Street. Usually one to two cars make it through per light cycle to turn left. There's not a lot of hope if you are trying to go straight ahead at this light. The left lane is backed up waiting for pedestrians, the right lane is backed up waiting for pedestrians and oncoming traffic, and thus two-four cars get through per cycle.	Not being able to turn left from Pacific Highway to North Sydney	No aspects	Oppose	1a

81	Louise gillespie	Location, noise pollution, air pollution, greenspace, traffic	The closure of a lane on a busy main road wasn't great. The concept as a whole is clever and should be celebrated but the location wasn't appropriate. Reopening the lane to traffic would be a better use of public infrastructure and the amenities could be moved to other locations in north Sydney to have better patronage. Every time I went past it was empty. Also people don't want to sit and mingle directly on top of a main road with traffic noise and air pollution from cars.	The removal of a lane for traffic on a busy and main thoroughfare	The plants were nice	Oppose	1a
82	Rod	Location, underutilised	Great idea but the wrong location and not really used be better at another location in North Sydney	I think that the location was not suitable as the retail area did not lend great patronage.	I like the concept	Oppose	1a
83	Sarah Mann	Traffic, aesthetic		Where it was, impacted too much on the traffic around north Sydney area	Liked the look and idea of it the pop up	Oppose	1a
84	Brigid Ferguson	Pedestrianisation. Pianos	The best way to add vibe and character is to allow businesses to extend their trade to the outdoor space. So position of pop ups is best aligned to where there are dining venues. See the mall between military road and paraween st cremorne. All restaurants,	The planning and the piano. I mean really, an outdoor piano?	The intent behind it, in making north sydney more accessible for pedestrians and bringing more character to what is an otherwise grey deserted corporate ghost town.	Oppose	1a

			always trading well, people enjoying outdoor dining.				
85	Henry	Bus interruption, aesthetic	Put more thought into the quality of these pop ups and question who actually wants something like this when we have a nice community space across the road	Inconvenience for the bus stops, poor build and deteriorated fast, not a lot of thought put into it	Nothing	Oppose	1a
86	Kam dhami	Air pollution, noise pollution, underutilised, traffic	What a disgraceful use of taxpayers money. Whoever thought of this grandiose waste of time, money and info time other resources needs to rethink. Why on gods earth would you want to sit on a main traffic thoroughfare inhaling toxic fumes from tunnel boring, buses and traffic! Please can someone explain this to me. I live on miller st and NEVER saw a single person sitting there. I did however sit and waste my life in traffic jams snarling down to blues point road.	Everything	Nothing	Oppose	1a
87	Elaine Wziontek	Greenspace, pianos		It was built too soon and the piano was never used	The greenery in this densely populated area	Neutral	2c
88	Samir Somaiya	Location, pianos, traffic, noise pollution	Even though it's a fantastic idea by NS Council about creating pop-ups in the area, Miller st is a terrible location to do that in. There really needs to be better streets and locations where such an idea can be a success,	It's an extremely busy street at the best of times, and with only two lanes! If one lane gets taken out for a pop-up, it creates havoc with traffic. Plus it's not pleasant for	The pianos	Oppose	1a

			without the noisy, busy road; or without closing a lane in one of the busiest streets in the area.	users of the pop-up, since it's on a busy, noisy road.			
89	John Bradford	Safety	This is a major safety risk to users and motorists. You have a blunt end temporary F type barrier with no crash cushion and are relying on pot plants to stop a traffic incursion into the eating area. This is a recipe for a mass casualty event. A big price to pay for being stylish. The engineer responsible should be sacked.	Risk of live traffic incursion into pop up	very Little, was kept clean.	Oppose	1a
90	Lesley Sommerville	Traffic, bus interruption, noise pollution, air pollution, overshadowing, underutilised,	I am totally opposed to the "pop-up plaza" remaining.  Closing part of Miller Street for this "pop-up plaza" is a crazy idea.  This is A MAIN ROAD and it is now effectively 1 lane at the busiest intersection in North Sydney. Miller Street is THE BUS ROUTE from North Sydney to Neutral Bay, Cremorne & Mosman, and Cammeray and Northbridge.  Who wants to sit there with cars, noisy trucks and buses weaving around them, spewing out exhaust fumes (especially	Closing 1 lane of a major road	Nothing	Oppose	1a

the buses idling at the bus stops). It is uninviting and soulless, cluttered, overshadowed in the afternoon, and no amount of greenery will change that.

Over the past 6 weeks I have had to go to North Sydney twice a week for appointments, at different times of the day. In that period, I have seen 2 - yes, only 2 - people using the "plaza" - 2 girls from Monte Sant'Angelo eating their lunch.

Northbound, to get to Neutral Bay out of peak hour and on weekends, when the buses aren't frequent, I have used the 202/203/207/208 buses (going to Cammeray) to go to the stop at Falcon and Miller, and change there to the Neutral Bay services coming from Crows Nest. Now that the bus stops are separated by the "pop-up plaza", there is not enough time to get to the new 202 bus stop if one of those buses comes first.

Friends from McMahons Point who used to go to Woolworths Metro on the weekend don't go



			<p>there anymore as they can't park there.</p> <p>Again, I am totally opposed to the "pop-up plaza" remaining.</p>				
91	Ben Duigu	Bus interruption, traffic, weather, greenspace, left hand turn slip lane, pianos	<p>No consideration given to how a parked buses (pick-up and drop-off) and a significant build-up of right-turn traffic has propensity to stop all through traffic up Miller Street.</p> <p>Pop up not long enough or weather protected enough to be successful in the area. It has worked in other pop-ups where a road is closed off the major road (e.g Neutral Bay and Kirribilli) but doesn't work as well where only a portion of a major road is blocked.</p>	<p>Bottle-necking of traffic. Removal of left turn into Miller Street from Pacific Highway. Removal of parking. Improper weather protection. Loss of pianos through exposure. Not welcoming for public usage due to pot placement.</p>	Pots and plants	Oppose	1a
92	D. Brutans	Wind, overshadowing, parking, traffic, underutilised, piano, aesthetic	<p>The weather means that the pop-up is rarely attractive. It's near a wind canyon. The wind roars up from the harbour. There's little sun so it's too cold for much of the year. The plane trees release substances that irritate the nose and throat. The whole thing is ugly.</p> <p>The removal of free parking hasn't been addressed. 5 months ago I wrote to council</p>	<p>Closing the lane. Removal of 4 free parking spaces. It's ugly.</p>	Nothing	Oppose	1a

to advise me where the new free parking spaces are. They must be hard to find because I still haven't received a reply. I no longer shop in North Sydney unless parking is free like on Saturdays. I have lived in the area since 1976. Over time council has made it more unappealing to locals with cars. I can no longer walk up the entire length of Blues Pt Rd. The few free car spaces there are nearly always occupied. I can no longer go to an ATM or bank without having to feed a meter. Hence like most locals I shop elsewhere. Many businesses have closed. I would like to support them but not when I have to pay to go to my local shops.

If Miller St is turned into a plaza it would make it into a traffic nightmare. How could I drive to Cammeray? I would have to queue to do a right turn into Berry St and then work my way across 4 lanes of traffic. However, I know Berry St is going to change but I don't know that if anyone knows how it could all possibly work. I can't see that North Sydney will ever

have massive numbers of workers like in pre-Covid days. A plaza will be a hazard to most locals. A space for outdoor dining has to have protection from the wind, cold, heat, rain and plane trees. Most of the time the seats would be empty because it wouldn't be pleasant to be out in the elements there. Most of the time the area is empty now. If it's a pleasant day there are sometimes a handful of people there. Only once have I seen someone playing the piano. How many of you have been blown into a glass shopfront by the wind roaring up Blues Pt Rd? I have. It was years ago when I was strong and healthy. Try sitting in a car in Blues Pt Rd and then waiting at the lights at Blue St. When there's a strong wind the whole car shakes. If you then drive to Cammeray the wind level would have dropped considerably. It doesn't have the wind canyons due to skyscrapers.

Planners have wonderful ideas. However, unless the plan is attractive and practical it won't work. The pop-up works when

			the weather is ideal. Unfortunately for this location that's probably only 3 months of the year.				
93	Therese Delanty	Traffic, parking, buses		The planned reduction of two traffic lanes of Miller Street, plus loss of kerb parking impacts amenities for residents who have limited street parking to access banks, etc. and commuters who use the buses to the north which will be slowed down.	No element is acceptable in terms of local transport reduction, delays and pollution for pop-up patrons	Oppose	1a
94	Name and address withheld	Traffic, left hand turn slip lane, underutilised	<p>I don't support the continuation of the pop-up and partial closure of Miller St.</p> <p>Expectations are being created that will likely not be delivered by Council.</p> <p>There is no certainty that Miller St will be closed in the future. This is because State transport project planning and implementation and NSC public domain strategy and planning are at odds.</p> <p>It is difficult to provide meaningful feedback on the closure of Miller St (either partial or complete) because of</p>	The disruption to traffic (esp the blocking of the left hand turn from the Pacific hwy) and a lack of patronage (from my observation).	It's a good idea executed in the wrong position.	Oppose	1a

		<p>this lack of clarity.</p> <p>Planning for the Western Harbour Tunnel and the Beaches Link connecting roads for North Sydney are based on Miller St staying open. They do not appear to take into consideration Miller St being closed. Keeping it open appears integral to their plans for Berry St as a connecting road. NSC's Public Domain Strategy and planning is to close Miller St and create Miller Plaza between Berry St and the Highway.</p> <p>Based on this it seems fair to assume that the State Govt will not allow the Council to close Miller St.</p> <p>NSC itself recognises that:</p> <p>"... the Western Harbour Tunnel and Beaches Link project proposes an entry portal that will be accessed from Berry Street. This presents significant challenges to achieving key elements of the PDS including the creation of Miller Place. Council will continue to work with state agencies through the</p>			
--	--	---	--	--	--

		<p>NSITP to achieve a good outcome for the CBD.”</p> <p>(NSC web page attaching the NSPDS and referencing the submission by NSC to State Planning on the Western Harbour Tunnel/Warringah freeway upgrade EIS of March 2020)</p> <p>In the Council submission cited above it states:</p> <p>“The proposed widening of Berry Street (under WHT) will increase the regional traffic movement function of Berry Street at the expense of local movement and place outcomes. This is inconsistent with the vision for Berry Street detailed in North Sydney Council’s Public Domain Strategy ...” p12</p> <p>NSC should therefore return Miller St to its previous fully open state, and revise its plans for Miller Plaza and the CBD public domain, and focus on future traffic congestion, rat running and access to/from suburbs surrounding the NS CBD.</p>			
--	--	--	--	--	--

95	Stefano Bianchini	Underutilised, air pollution, noise pollution, greenspace, traffic	I don't think it's a great idea as nobody really enjoys sitting on Miller Street with all the cars	reduced street increasing car traffic	plants	Oppose	1a
96	Yee Ooi	Traffic, pianos, air pollution	(1) See my comment above regarding cars southbound along Pacific Hwy needing to turn into Miller Street. (2) The part closure of Miller St eastbound causes cars along Pacific Hwy northbound turning into Miller St to be stranded at the intersection when the traffic light changes, blocking southbound traffic. (3) Currently, even some of the shops in the nearby food court have shut down, possibly because it is uneconomic. (4) The piano has never been used.	Cars southbound along Pacific Hwy needing to turn into Miller Street now would have to do a long manoeuvre, wasting petrol and causing more pollution.	Nothing. it is a moronic scheme dreamed up by nitwits.	Oppose	1a
97	Nat	Noise pollution, air pollution, user behaviour, traffic	Although I understand why this has been done but you'd be better off making the existing plaza more interesting or using the green nature strip next to the plaza to better effect.	The noise, fumes, tradies sitting there continuously while smoking and swearing at one another, the traffic blockage it has caused on Miller St and around nearby streets while drivers have to find ways to navigate through.	Nothing at all	Oppose	1a
98	Nicola hutchinson	Wind, overshadowing, traffic	North Sydney needs to be multi functional - space for office workers, residents, and a place that due to the location needs	Windy always, shady due to high rise buildings on both sides- no need for pot plants to provide		Oppose	1a

			to be able to be traversed across north/ south, east/ west. Provide for all users Walker st is not an alternative it's already busy  Can I also asks if there has been a survey on who and how many people use Miller st pop up?	shade, narrows street therefore ability to travel from one side of north Sydney eg mcMahons point and vicinity to Cammeray is severely restricted,			
99	Name and address withheld	Traffic, left hand turn slip lane, cyclist safety, noise pollution	The traffic jams are unreasonable from the blocked lane and the loss of the left turn from the pacific highway heading southeast into miller street is even further inconvenience for locals. The project does not achieve its goals as it has not created more or pleasant outdoor amenity, and has not considered the needs of locals yet again. The narrowed road is also very dangerous for cyclists. I think this project should be scrapped.	It causes traffic jams. And it is not reasonable to think that people want to sit on a noisy road for coffee.	I think it is a good intention in the wrong place	Oppose	1a
100	Timothy Etheridge	Underutilised, bus interruptions, traffic	North Sydney, local, who enjoys walk around the streets. The pop-up adds nothing to pedestrians, as cars and buses whizz by. It does nothing for vehicles as it is clearly a man-made obstruction.	No one uses it. The buses hate it . The cars congestion.	Very little.	Oppose	1a
101	charles brydon	Underutilised, traffic	is a waste of money, is under utilised, has caused traffic to be caught on pacific highway.	is just a waste of money and destroys traffic flow	Nothing	Oppose	1a



102	Vara G	Bus interruption, traffic, noise pollution, underutilised	I work as a bus driver in Nth Syd area. Since the 'Pop-up' and closure of one of Miller St lanes the traffic in the area became visibly congested. I'd like to invite Nth Sydney Council workers to witness the horrors of morning commuters fighting to squeeze through the bottle neck of Miller Street. Metro construction often takes up one of Berry St's lanes. Large construction at the Monet Sant' Angelo College does the same. This creates a massive traffic jam in such traffic-heavy area. I believe that this concept was poorly planned as it doesn't bring desired benefits and massively adds to the traffic nightmare of today's North Sydney.	Causing terrible traffic jams while serving mainly workers of Metro construction site. You see them illegally crossing Miller street to eat their lunches there. You can hardly see other people enjoying the space as it's such a noisy part of Miller st	Element of surprise-had no idea it's coming untill it came.	Oppose	1a
103	David Walker	Traffic, location, business activation, noise pollution, air pollution, bus interruption	Please remove the pop-up and restore the traffic lane!	Submission 1. It is an unnecessary waste of a traffic lane. It is in the wrong place, as there are no cafes near it. Please remove it and restore traffic access.  Submission 2. It is a failure. It needlessly takes up a much-needed traffic lane and is futile because	Nothing	Oppose	1a

				it is not next to any cafes. No one wants to use it because it is next to a busy, noisy traffic lane with noxious exhaust fumes. Bus drivers especially hate it.			
104	Robin Tyrrell	Wind, traffic	<p>Submission 1. Nothing to recommend the idea. As I said before a wind tunnel most unfriendly</p> <p>Submission 2. Road should remain open to traffic</p> <p>Submission 3. The total disruption to residents of McMahons Point, people exiting the bridge via Pacific Highway and travelling up Miller Street. A really dangerous intersection at Pacific Highway and Miller Street. Traffic suddenly stops and you are in the middle of the highway with traffic coming in all directions.</p> <p>Submission 4. TOTAL AND UTTER DISRUPTION TO RESIDENTS OF NORTH SYDNEY.</p> <p>Additional comment (from name withheld section) - This</p>	<p>Submission 1. Disruption to traffic flow. In fact IS CAUSING MAJOR TRAFFIC JAM ON HIGHWAY</p> <p>Submission 2. Major traffic disruption</p> <p>Submission 3. The TOTAL DISRUPTION TO THE FLOW OF TRAFFIC IN PACIFIC HIGHWAY, MILLER STREET;; BERRY STREET.</p> <p>Submission 4. THE TOTAL DISRUPTION TO RESIDENTS TRYING TO ACCESS THE FREEWAY VIA BERRY STREET FROM MCMAHONS POINT WAVERTON ETC. IS IMPOSSIBLE AND EXTREMELY DANGEROUS WHEN TRYING TO CROSS PACIFIC HIGHWAY. YOU LEAVE MILLER STREET.</p>	<p>Submission 1. Nothing disrupts the traffic flow and it is windy and only gets the sun until about 10.30 am</p> <p>Submission 2. NOTHING The only people who appear to be using it consistently are the the workers on the tunnel</p> <p>Submission 3. Absolutely nothing to like about this jPoP;;up</p> <p>Submission 4. ABSOLUTELY NOTHING.</p>	Oppose	1a

			<p>pop up is causing MAJOR traffic congestion in peak hour when travelling from Blues Point Road crossing Pacific Highway and entering Miller Street. You can enter Pacific Hwy on a green light and suddenly find yourself marooned in the middle of the Highway thus blocking traffic. Also with only one lane in Miller Street cars wishing to park in the MLC building have to wait for pedestrians before entering thus blocking the traffic. Buses used to use the left hand lane and collect passengers now they all line up blocking the one and only lane wishing to turn right to get onto the expressway. FRANKLY THIS DOES NOT APPEAR TO HAVE BEEN THOUGHT THROUGH PROPERLY. The idea of a pedestrian plaza is unbelievable. How do residents get onto the Expressway if travelling north, how do they not block Pacific Highway??</p>				
105	James Merrington	Safety, traffic, underutilised, air pollution	Submission 1. I live in McMahons Point and often have no choice but to travel via Miller street to get to many points north. When the	Submission 1. Hijack of road for no community benefit  Submission 2. North	Nothing - hardly used yet creates huge bottleneck for traffic	Oppose	1a

			<p>pandemic is over the impact of the road closure will lead to gridlock, wich could easily be fatal</p> <p>Submission 2. Australians buy one million new cars per annum. Reducing amenity to cars just means more congestion on other streets. I live in McMahons Point and there is no alternative but to travel through North Sydney CBD</p>	<p>Sydney traffic already congested before pop up, now with Covid restrictions relaxed. Congestion will get worse. Also, on all occasions when passing very little usage. Smokers &amp; vapers seem to like it</p>			
106	tony lotz	Traffic, cyclist safety, air pollution, bus interruptions	<p>Traffic needs to move through Miller St., not be delayed only to emit more fumes on pedestrians. This whole project is ill conceived, unwelcome and impractical.</p>	<p>Submission 1. whoever thought of this traffic choke in a busy area must be crazy. Vehicular traffic is slowed by cyclists as they can not be passed safely, people using the pop up are treated to a toxic cocktail of exhaust fumes from passing cars and buses, it is a maj</p> <p>Submission 2. there was nothing to like</p>	<p>Submission 1. the possibility of it being removed</p> <p>Submission 2. The fact it may be removed</p>	Oppose	1a
107	Miles Bastick	Traffic, overshadowing, wind, underutilised		<p>Submission 1. It completely disrupts morning traffic and is rarely used. It's an ugly dreary spot in a shaded and windswept street. It</p>	<p>Submission 1. Nothing</p> <p>Submission 2. Nothing. As a North Sydney resident the interference with traffic on Miller St is</p>	Oppose	1a

				<p>should be left as a road.</p> <p>Submission 2. The interference with traffic. In addition it is a dead space. It is barely ever used due to its desolate and windswept location</p>	<p>significant and dangerous during peak hour when vehicles bare trying to turn left into Miller St from Pacific Highway and also to cross the Pacific HW from Miller St.</p>		
108	Name and address withheld	<p>Left hand turn slip lane, traffic, parking, underutilised, noise pollution, air pollution, pianos, bus interruption</p>	<p>Submission 1. The closure of the LHT slip lane from Pacific Highway into Miller St, is inappropriate, ... due to the angle of the streets, LHT is no longer possible, therefore causing additional traffic around the area.</p> <p>The closure of the kerb lane of traffic has had a negative impact on the traffic, especially in peak hour times. Forcing all traffic, including buses, truck and cars, into one lane, it is taking much longer to move along Miller St., with engine's running continuously. It was much easier with two lanes for the traffic and bus stops during peak hours and then parking in the middle of the day.</p> <p>The removal of the parking spaces along Miller St has impacted on the ability of</p>	<p>Submission 1. Caused additional traffic issues, pushing all vehicles, trucks and buses into one lane, that is often built up with RHT into Berry St. Loss of LHT from Pacific Highway into Miller.</p> <p>Submission 2. The removal of a trafficable lane for Miller St, pushing every car, bus &amp; truck into one lane - is madness and slows down the traffic, as well as stopping cars from turning Left into Miller St from the highway. Also loss of parking outside the banks.</p>	<p>Submission 1. NOTHING - it has been wasted space - under-utilised by people; pianos not used in the rain; negative impact on traffic; &amp; loss of parking for the only banks in NS, especially for older, infirm and disabled persons.</p> <p>Submission 2. As I've said before - THIS was a wasted exercise and has not worked! Like NOTHING about it - but at least the vegetation has filled out a bit with all the rain</p>	Oppose	1a

		<p>residents to go to the banks in North Sydney, especially for older, less able, and disabled persons. Parking and especially disabled parking should be re-instated on Miller St as a community amenity to enable residents to access banks.</p> <p>Every time I've driven past or walked past the pop-up, there has been less than a handful of people there and often no one! The underutilisation of this space, tells the story that it is not appropriately placed.</p> <p>It is not inviting to be sitting on the street, with vehicles' noises and fumes, in such a high traffic road with so many buses, trucks and cars heading north along Miller, and all those then using Berry St to access the Warringah Freeway or Sydney Harbour Bridge.</p> <p>Others have commented on the Piano not being played and sitting out in the weather! Again another wasted effort!</p> <p>Submission 2. This has not worked!</p>				
--	--	--	--	--	--	--

			<p>The traffic has been exacerbated in every way.</p> <p>The pop-up has not been utilised by the locals, nor those working in CBD, as they do not wish to sit on a busy street with the bus fumes and car fumes, especially as everyone had to get into one lane - so beside them for long - no one enjoys breathing in the pollution.</p> <p>The only people I ever observed using the spaces, were the Metro workers in High-Viz vests - who were happy to be above ground to eat their food.</p> <p>It doesn't work &amp; has to GO!</p> <p>Give us back parking for the banks, especially some disability parks.</p> <p>Also need two lanes for Miller St traffic as well as LHT from Pacific Highway into NS vs having to drive further around a loop to be able to go up Miller St.</p>				
109	Matt	Left hand turn slip lane, parking		Submission 1. that you could no longer turn from	Submission 1. not much	Oppose	1a

				<p>acific highway into millier street with the car and quickly jump to the atm or wollies</p> <p>Submission 2. It did not contribute at all to a more village like atmosphere. North Sydney Council needs to put much more thought into how to make North Sydney CBD nicer then just to waste money on such useless pop-up.</p>	Submission 2. Nothing really		
110	Andy Betkowski	Pianos	<p>Hello,</p> <p>I am a frequent visitor to North Sydney and love working there when not in the city and was extremely pleased to see not one but two public pianos there when passing through last month. Public pianos are a wonderful idea that give pleasure to a visiting pianist and to people passing, alike. Every precinct in every city should have one. I am a recent student of piano, having learned a few tunes starting in the 2020 lockdown. I never pass up an opportunity to play on a public piano, namely in the QVB and at the Coal Loader in</p>			Support	2d



			<p>Waverton.</p> <p>Unfortunately both pianos in Miller Street were virtually unplayable back in February. Less so not in tune, more that many keys on both pianos were simply dead. Please, please, please could council repair one or both pianos to make them playable or else source a piano that is playable. Please?</p> <p>Kind regards...Andy Betkowski.</p>				
111	Dr Denise Salvestro	Traffic	<p>The current pop-up in Miller St is attractive and its purpose is commendable. However, the projected closure of Miller St would be a disaster! As a local resident who regularly uses Miller ST and surrounding streets it is obvious that the closure of Miller ST would create serious traffic congestion in the Nth Sydney CBD, especially at peak times. Council should seriously consider NOT creating a full plaza but retaining the pop-up areas as are and leaving 2-way traffic lanes to reduce the congestion in surrounding streets.</p>			Support	2d

112	Alexis FRANCOIS	Greenspace, social/rest space, pianos		The pianos are getting soaked and damages by the rain because they are only covered by a small umbrella. Such beautiful pianos deserve more respect and care. Although the idea of piano is great, this is a loud street and people can't hear themselves play.	The "little garden" effect in between giant skyscraper, the sitting spaces for lunch breaks	Support	2d
113	Vanessa Butler	Aesthetic	Love the pop up and would like it to be permanent. More of these spaces please	not wide enough - not big enough all over	Visually they are very appealing	Support	2d
114	Valerie Clayton	Placemaking. greenspace		Not enough trees & plants	Makes the area more pleasant	Support	2d
115	Rhonda Gasper	Social/rest space, social cohesion	I think it's great. North Sydney needs activations. I say it should be a long term vision. I understand it will cause concern with vehicle traffic and perhaps some congestion but the traffic issue is a bigger issue than one small strip is not going to make it better or worse.  Sydney calls itself an international city... it's about time we bring some life to it and make it one!	Na	Social connection and community activity	Support	2d
116	Wei zhao	Piano, greenspace,		the fence around it	piano and plants	Support	2d

117	Joel Katz	Placemaking, business activation	Definitely make it permanent	Would be nice if there were some cafes/restaurants adjacent	Great public amenity	Support	2d
118	Name and address withheld	Pianos, social/rest space, pianos	I would be interested to know what the checkin arrangements are for playing a piano. I have a friend who might be interested. Who may play, and how do they check in?	Although I haven't seen or heard the pianos being played yet, I wonder whether they might become rather damaged by the weather over time.	It looks inviting. I have seen people sit down and eat there, but have not done so myself yet.	Support	2d
119	James McKinnon	Greenspace, open space, Pedestrianisation, overshadowing	Love the Plants and the sense of open space	Not quite as shaded today when sitting down as would have liked	It is a good start to creating a permanent Miller Street Pedestrian Boulevard	Support	2d
120	Varun naik	Social/rest space, underutilised	Good to see the place having more utility than as parking spots	Not many people about, due to people working from home	Pleasant, charming place to take a break	Support	2d
121	Michael Morris	Traffic, pedestrianisation	Make it permanent	Bit too much slope on the floor	Quieten the traffic and more foot traffic	Support	2d
122	Mars Piolin	Placemaking, social/rest space	It would be good if a drinking fountain will be added.	I am proud that Council thought of this it adds value to North Sydney.	It provides a sense of space for people working in the offices and hangout for lunch. And also provides the residents a space during weekends.	Support	2d
123	Christopher Giffard	Pedestrianisation, social/rest space	I wholeheartedly support the full closure of miller street. The city over-provisions for car traffic as opposed to pedestrian traffic almost prodigiously, and I would very much love a few more little pedestrian sanctuaries in the city and a safer faster walk to both North	I think the busyness of Miller street detracts from the experience, and there are few points to cross the road (a problem which existed previously, granted.)	The leafy space protected from cars is a welcome change! Easier walking, good places to eat and gather. The pianos were a wonderful touch!	Support	2d

			<p>Sydney station and the new Metro.</p> <p>Additionally by avoiding segmenting blocks with large arterial corridors, far more opportunities for commercial development which would otherwise not see the required foot traffic abound. You can see the effect of a segmented local shopping district if you look towards Crows Nest &amp; Pacific Highway — the shops on the opposite sides of falcon and pacific highway see far less foot traffic and interest, and those spaces are perpetually vacant. If it were trivial to cross on a whim, the area would be far more vibrant — Miller St plaza is an opportunity to create a real retail and restaurant hub, and enliven the district.</p>				
124	Tanya Band	Traffic, safety, air pollution, location, noise pollution	<p>The speed of vehicles through North Sydney LGA is way too fast, even on Miller Street the speed should be lowered, so the town is safer for pedestrians, cyclists and kids. The roads should be designed and built in such a way that is inconvenient for the cars to</p>	<p>It is done on a very busy street. Hard to enjoy a cup of coffee while inhaling exhaust fumes from passing vehicles. The heavy traffic passing by on this street makes the area very loud. Again, hard to enjoy and relax.</p>	<p>The reduced width of Miller Street (less by one lane), slightly less traffic.</p>	Support	2d

			drive fast and we shouldn't rely on road signs or warnings.				
125	Fenella Moyle	Traffic, bus interruption	The only reason it seems to be working, as we have been in a pandemic, and there has been little traffic. Once things get a bit busier (and they will) this will create a bottleneck of traffic coming across the bridge, from Kirribilli etc etc	Closing a road, so that when you are on the bus, it is so slow as the traffic is now only one lane. Ridiculous	I don't. It cause traffic chaos.	Support	2d
126	Tracy Thomas	Placemaking	Please make it permanent	Nothing	Ambience	Support	2d
127	Chris	Pedestrianisation, cyclist safety	Thank you for the initiative. Let's make it safe for all.	Lack of bicycle lane on Miller Street, drivers perform dangerous overtaking manoeuvres and do not keep a safe distance.	Attempt at making the place less car dominated and instead a place for people	Support	2d
128	Sara Klug	Pedestrianisation. cyclist safety, social/rest space, business activation, greenspace, traffic, noise pollution	The pop up didn't make it safer for bike users, only one narrow lane, no dedicated cycle path. In future having the entire road closed would be much more useful for pedestrians - families can relax, sit out, go shopping (hopefully if we get some decent shop and cafe options) and can cross without danger - pop up didn't really allow this.	Traffic & its noise meant it wasn't very peaceful	Greenery	Support	2d
129	Barbara Noden			The fact that traffic is still using that area is not conducive to a pleasant experience.	I think the idea has merit and once the traffic is diverted from that part of Miller Street it could be a	Support	2d

					pleasant area to enjoy coffee or a meal.		
130	Jon Cook	Overshadowing		Too shady. Difficult to cross Miller St at the Pop-up	Useful facility	Support	2d
131	Carmel Dunn	Street furniture, greenspace, noise pollution, safety		Traffic along Miller Street too noisy and dangerous.	Looks great - plants and outdoor setting exceptional.	Support	2d
132	Andrew Elliston	Cyclist Safety, pedestrianisation	Just to repeat, whilst the idea is good, there is a downside. No provision or consideration was made toward the safety of cyclists. Cyclists are pushed into a single lane with cars when going up a hill, and many car drivers will not yield. Part of the blocked lane needs to be returned enabling safe passage	No provision or consideration was made toward the safety of cyclists. Cyclists are pushed into a single lane with cars when going up a hill, and many car drivers will not yield. Part of the blocked lane needs to be returned enabling safe passage	Returns street space to pedestrians	Support	2d
133	Jennifer Lang	Pedestrianisation, cyclist safety, social/rest space	I love the idea of quieter streets in North Sydney, and prioritising people over cars. However, please make some allowance for cyclists. I am both a pedestrian and a cyclist, and I would like to be able to ride through North Sydney without fear for my life having to merge into one lane with buses. I live in Crows Nest, and use this popup as a pedestrian (which I love) and as a cyclist (which I hate). Please continue the popup, and create a safe cycling	It makes it very unsafe for a bike rider up Miller St - Miller St is the main route north from the Harbour Bridge for a large part of Sydney's north, and it is scary every time I have to merge into one lane. Please ensure cyclists aren't forgotten.	Creating space for people to sit outside, particularly useful in Covid times, to be safer while eating	Support	2d

			route from the Harbour Bridge to Crows Nest (and beyond).				
134	Chart	Social/rest space, pianos		Putting pianos outdoors was a disaster waiting to happen and very sad to see them destroyed in the rain	Provided seating	Support	2d
135	George	Left hand turn slip lane, piano		i dont think the piano is necessary	I liked seeing the turning left corner from pacific highway onto miler street cut off from traffic	Support	2d
136	Ryan Kellt	Pedestrianisation, social/rest space, traffic, pianos		Concept is good but presentation of items can be lacking Eg piano and too many cars	Extra space to walk and eat during the day.	Support	2d
137	Shameem	Social/rest space, street furniture, piano		Piano not practical	Seating areas super helpful	Support	2d
138	Michael Bible	Pianos, traffic, overshadowing, wind, metro construction		Traffic chaos , it's cold and not sure why you would want to sit so close to a road and construction site	Something new in North Sydney I, loved the concept of the pianos, it's a shame they couldn't be kept in better condition.	Support	2d
139	Warren Jacobs	Pedestrianisation		Nothing	More life and more pedestrian friendly	Support	2d
140	MARIANNE DE SOUZA	Placemaking, activation, social/rest space	I commend Council for being innovative, and trying to bring some social life and social meeting places to a CBD like NSyd . Crows Nest and Cammeray cant be the only places to sit and chat and meet up!	nothing	The cheerfulness it brings and how it makes that area a friendly drop in place...creates a place for connexions ..a meeting place. God knows there are few if any others in N Syd CBD- its all rush here	Support	2d

					rush. this gives people a space to meet up		
141	Ben	Left hand turn slip lane	Reduce traffic further by no right turn at Berry Street into Miller Street and no right turn at Miller Street into Berry Street	The amenity is impacted by the Metro development. Once that it complete, it will be much better to use the seating area	Block left turn at Pacific Highway	Support	2d
142	JJ	Pianos, placemaking, business activation	Music adds so much atmosphere. The pianos just need maintenance! Also placed somewhere else where they can be appreciated. Not in such an odd spot with so much (foot & car) traffic.	It's not a good sitting area when there are no coffee shops or restaurants.	The pianos	Support	2d
143	Nathan	Pedestrianisation, street furniture		The furniture itself was a bit odd	Additional walking space	Support	2d
144	KN	Pedestrianisation, pianos		the pianos were a nice addition - but their quality has deteriorated	Increase useful space, especially in front of woolworths which is a very busy area of footpath	Support	2d
145	Tom Ansell	Social/rest space		Nothing	Ability to enjoy lunch outdoors during work.	Support	2d
146	Aaron Hampson-Smith	Pedestrianisation, traffic, pianos	Please more of this in north Sydney cbd we need to make north Sydney more pedestrian and human friendly and less a through strip for cars and buses. Divert all buses up pacific highway!!	The pianos were a bit naff, also it has a really temporary feel, would be great to have a more permanent feel thank e.g cement foundations	I liked that it took the focus away from buses and traffic on miller street and made the strip feel more pedestrian friendly	Support	2d
147	Jennifer Lankford	Social/rest space	Thank you for trying this area!		It's so nice to have a nice place to sit down	Support	2d



148	Denise Moore	Pedestrianisation, placemaking		nothing	It's very people friendly and improves the streetscape	Support	2d
149	Melissa	social/rest space		Nik	How inviting it was. Extra space outdoors	Support	2d
150	James Murphy	Pedestrianisation, placemaking	This is a big improvement to Miller Street - pedestrians gaining amenity over cars.	Nil	A boring road area has become inviting. I love the space.	Support	2d
151	Lorena Garmendia	Safety, traffic, social/rest space	Great initiative, would love it to become Permanent	N/a	The extra space to sit down, safety of road closure	Support	2d
152	Barbara DeGraff	Pedestrianisation, traffic	<p>I am fully supportive of Council's efforts to improve pedestrian access in North Sydney and support:</p> <ul style="list-style-type: none"> <li>• widening of footpaths, providing more room and improved access for people walking along Miller Street</li> <li>• reducing kerbside parking and reducing lanes for traffic. The project includes:</li> <li>• landscaping to improve amenity and encourage activity in the area</li> <li>• incorporating a public outdoor piano</li> <li>• closing the left turn 'slip lane' from the Pacific Highway (southbound) into Miller Street to improve pedestrian safety</li> </ul> <p>Anything that can be done to</p>		Widened footpaths and less traffic	Support	2d

			improve better quality public space for the North Sydney community, increase vibrancy in the CBD, and support business and retail activity is welcome.				
153	Fariha Masha	Greenspace, noise pollution		It's noisy as too close to the metro construction	The greenery	Support	2d
154	Tessa	Greenspace, social/rest space		It wasn't done sooner	Additional green space to sit, eat or drink when green space is so lacking in the North Sydney CBD.	Support	2d
155	Name and address withheld	Cyclist safety, pedestrianisation, underutilised, business activation, pianos	Miller St is frequently used by cyclists to move between the Harbour Bridge and up to West Street. While the narrowed area is flat, the lane closure made it more dangerous for slower moving cyclists because cars didn't have an extra lane to overtake them safely. If Miller Street is to be narrowed or closed, it's even more critical that a safe, convenient, separated bike path is added to the Pacific Hwy to take all ages and abilities of cyclists between the bridge and up to West Street to connect with the rest of the network at Naremburn.	Not enough surrounding businesses to sustain a pedestrianised area yet. Still too much noisy traffic going through. The broken piano was an eyesore.	The idea of reducing car traffic in the CBD and making space for people is a good one	Support	2d
156	Barvara Hush	Social/rest space	North Sydney Miller Street POP Up As this is a temporary pop up		A place to sit and break the space between Mount St and Greenwood if required, in the sunshine	Support	2d

		<p>place, it may not be first class design but due to the surrounding building construction work and especially in those early Covid lockdowns it has been welcoming. The huge flower pots with well maintained plants, umbrellas and seating, I am sure will be utilised in time when the buildings are completed. You can even pick a few ripe Lilli Pillis lately, for a snack.</p> <p>During the week, the Tradies utilise the spot sit together have a yarn. Yes it's dam noisy but, it at least it's a place to grab a bite sit in the sun. Office workers, meet up for a quick lunch break. On the weekends mainly Sundays, locals some elderly, sit and have a coffee, read the papers while enjoying the sunshine. It can be a little noisy especially with the buses at times, but no more than other urban areas.</p> <p>Initially I was stunned at the design, especially the pianos, but like other locals, have grown to enjoy the space. Young kids and students play</p>		and shelter. Meet friends and check messages etc.		
--	--	--	--	---	--	--

			<p>the pianos (now gone) while parents or friends video them. It's fun! The elderly in the area who like shopping, enjoy the seats which breaks the journey from Mount Street or Greenwood. There are even convenient waste bins, (could do with a recycling bin)</p> <p>So thank you North Sydney Council it has been great, to have the Miller Street Pop -UP especially during those early days of Covid.</p> <p>Barvara Hush Oak Street North Sydney</p>				
157	Kathy Brodie	Overshadowing, pedestrianisation, greenspace, pianos	<p>The North Sydney CBD has such limited sunshine and places to sit for the workers - this is a step in the right direction for claiming road space for pedestrians. City spaces are so much better with out cars - look at George St in the city. The Miller St closure has been during Covid with limited people working and lunching in the city so I feel this is not a trial has not truly last long enough as many North Sydney</p>	Piano's are broken	Greenery is parked rather than cars! I busy road space is now pedestrian space.	Support	2d

			workers are yet to return to the CBD.				
158	Jessica Rafanelli	Placemaking, activation, social/rest space		Massive building site opposite	Love it!! Definitely increased the vibe and open air options for lunch. Means that I don't eat behind my desk and have a lovely break in a nice location	Support	2d
159	Chris	Business activation, traffic, cyclist safety		It doesn't have a dedicated cycleway. Miller Street is an important arterial way for cyclists from North Shore to CBD. It can be very intimidating to travel along Miller Street due to high volume of heavy vehicle movements and buses.	Additional space for eating out and calms the traffic	Support	2d
160	Prateek Chourdia	Noise pollution, social/rest space	Love it and let's change the bus route to reduce the noise	A lot of Bird poop	Friendly feel of the benches	Support	2d
161	Local residents	Social/rest place			Can sit have a coffee and pastry from woollies	Support	2d
162	Carlos	Street furniture	I like it.	All good.	The umbrella and the seats	Support	2d
163	George	Social/rest space, street furniture		Patch of grass for a dog to relieve themselves.	Open air seating.	Support	2d
164	Carole Burns	Pedestrianisation, greenspace	Support road closures and open green space for people in North Sydney		More space for pedestrians	Support	2d
165	Craig Morrison	Pedestrianisation	Leave it as it was or fully pedestrianise, traffic disruption	It's neither one thing nor the other. Either completely pedestrianise	Good to try things, but do not support this pop-up.	Support	2d

			not worth it for this partial solution.	this part of Miller St or leave it as it was. The traffic disruption of not being able to turn left into Miller St is not worth it for this partial pedestrianisation. Also, tables filthy			
166	J E Hagan	Location, traffic, amenity	I like the pop up	It's a poor location for it, it impedes traffic and it isn't a pleasant spot to sit.	Nothing	Support	2d
167	Michelle	Social/rest space		Tables and sitting area a bit dirty	Open air sitting area	Support	2d
168	Ernest Wong	Left hand turn slip lane	Please make the road closure of the slip lane permanent (and also on the opposite side at Greenwood where there is insufficient space for pedestrians waiting at the lights). The increased space for walking is also great.		Extra resting area, protection from traffic, increased standing area at the intersection	Support	2d
169	Bethany Gavin	Placemaking, location		Submission 1. Nothing Submission 2. It's not a dislike but I find it's a bit of an odd location to be outside a woolies, bank and bws	Submission 1. It's easy on the eye Submission 2. It makes the city look nice and more classy	Support	2d
170	Stephanie Johnson	Pedestrianisation	Submission 1. As far as I am concerned, we can close all the roads! It's the best way to stop pollution and climate change. People have to stop complaining about limits on	Submission 1. It was too small. I'd love to see the whole of North Sydney pedestrianised. How about congestion charges on people who drive in?	Submission 1. I am a non-driver and I love having more public pedestrian space.	Support	2d, 2b

			<p>their cars. Driving is a privilege not a right.</p> <p>Submission 2. I hope this becomes permanent</p>	<p>Submission 2. I needed to make a couple calls before going in to the bank and this was perfect</p>	<p>Submission 2. Location is very strategic</p>		
171	Ben Jays	Greenspace, social/rest space	<p>Submission 1. Loved the whole idea &amp; would like to see it expanded</p> <p>Submission 2. We NEED more green spaces in the City of North Sydney. We live in such a beautiful area, let's not ruin it with a concrete jungle. Can't wait for the 'Miller Place' pedestrian plaza.</p>	<p>Submission 1. Needs to be the entire street</p> <p>Submission 2. Nil</p>	<p>Submission 1. I loved the extra green space &amp; pedestrian 'relaxation' space rather than main thoroughfare/traffic.</p> <p>Submission 2. I LOVE the green space. This is a great little oasis. More trees &amp; plants the better!</p>	Support	2d, 2b
172	Kim Ryan	Safety, pedestrianisation, underutilised		Looked a bit empty	Felt safer as a pedestrian	Neutral	2c
173	Milsons Precinct		<p>MOTION: Milson Precinct requests that NSC investigate two disabled parking spaces on Miller St, be made available in the area north of the pop up area and before the driveway, so that older and infirm persons can access the banks within North Sydney.</p>			Neutral	2a
174	Tony Moujalli	Safety, buses	<p>Seeking your assistance.</p> <p>Attached is a risk assessment for bus stop relocated on Miller St after Pacific Hwy north bound TSN 206045 North</p>			Neutral	1a

			<p>Sydney.</p> <p>STA have concerns with the new location.</p> <p>Our primary concerns for post COVID conditions are the potential collisions with other vehicles and fixed objects at the new location.</p> <p>The possible traffic congestions on Miller St caused by buses waiting to access the new bus stop coming from Miller St prior the Pacific Hwy intersection.</p> <p>Please consider our recommended risk controls in the risk assessment.</p>			
175	Leo Almeda	Pianos	<p>Dear Council</p> <p>I was very angry to see this morning along the Miller Street Pop Up area, 2 pianos totally destroyed and unnecessarily so. This was touted to be part of a program to breathe life into the CBD and to see such equipment just allowed to be destroyed by the weather, even if they cost nothing to the taxpayer had they been donated, is disappointing.</p>			Neutral 2c



			Clearly someone is the architect of the Pop Up concept and they have failed.  Yours sincerely Leo Almeda				
176	Dean LaVigne	Social/rest space, traffic, left hand turn slip lane		The change to traffic - all left turns to Miller are rerouted to pass Miller and rerouted through North Sydney station	The outdoor seating	Neutral	2c
177	Catherine Dunkerley	Aesthetic, pedestrianisation, parking		Reduced short term. Parking	Visual appeal and extra walking space for pedestrians	Neutral	2c
178	Ingrid Campbell	Left hand turn slip lane, traffic, street furniture, social/rest space	The blockage of not being able to turn left into miller street from Lach of highway because of the pop up is such a pain if you are needing to go to the council chambers or norths Sydney oval part of north Sydney. I've found it quite a pain to have to drive all around north Sydney because of this and would prefer this road block to be taken out and allow traffic to turn here again to save time for drivers. The traffic it also becoming clogged up with buses etc because of this pop up and lane closure.	The fact you can no longer turn left into miller off pacific highway, such a pain	Seating to eat if you wanted though too much wet weather really didn't help	Support	2e
179	Monta Strauha	Traffic		One less lane for cars	More of a community feel to the street	Neutral	2c

181	Elias	Aesthetic, greenspace, traffic		It takes away a much-needed traffic lane	It looks good and provides some much-needed greenery and open space to the area	Neutral	2c
-----	-------	--------------------------------------	--	--	---	---------	----