

10.13.Young Street Plaza upgrade: consultation outcomes and preferred concept

AUTHOR	Diana Mejia, Project Manager
ENDORSED BY	Gary Parsons, Director Open Space and Infrastructure
ATTACHMENTS	<ol style="list-style-type: none"> 1. Preferred Concept Design August 2024 [10.13.1 - 19 pages] 2. Public Exhibition and Consultation Summary [10.13.2 - 12 pages] 3. Online Survey submissions [10.13.3 - 30 pages] 4. Free form submissions [10.13.4 - 7 pages]
CSP LINK	<ol style="list-style-type: none"> 1. Our Living Environment <ol style="list-style-type: none"> 1.3 Clean and green places 1.4 Well utilised open space and recreational facilities 2. Our Built Infrastructure <ol style="list-style-type: none"> 2.1 Infrastructure and assets meet diverse community needs 2.2 Vibrant public domains and villages 3. Our Innovative City <ol style="list-style-type: none"> 3.1 Our commercial centres are prosperous and vibrant 3.3 Distinctive sense of place and design excellence 4. Our Social Vitality <ol style="list-style-type: none"> 4.1 North Sydney is connected, inclusive, healthy, and safe

PURPOSE:

The purpose of this report is to present the outcomes of the community consultation on the proposed designs for the Young Street Plaza Upgrade and outline the next steps for finalising the designs for tender and construction.

EXECUTIVE SUMMARY:

- At its meeting of 11 December 2023, Council resolved to seek community feedback on the concept designs developed for Young St Plaza.
- Concept designs were placed on public exhibition from 1 May to 12 June 2024.
- Community consultation revealed broad support for the concept design
- General feedback suggestions included greenery, gardens, walkways, shade and seating, along with a desire for the inclusion of native plants, non-slip surfaces, and adequate lighting. All these elements can be incorporated into the further development of the design.

- Based on the consultation results, this report recommends proceeding to the detailed design phase, incorporating key feedback to enhance pedestrian safety while maintaining the overall concept.

RECOMMENDATION:

1. THAT Council notes the submissions report for the public exhibition and consultation of the concept designs for the upgrade of the Young Street Plaza in Neutral Bay

2. THAT Council endorses the concept design for upgrade of the Young Street Plaza in Neutral Bay to proceed to detailed design, tender and construction.

3. THAT Council notes that the concept designs for upgrade of the Young Street Plaza will be referred to Council's Access and Inclusion Committee to inform the development of these designs.

4. THAT Council allocate the \$2,749,042 Transport for NSW B-Line grant funding, currently held in external restrictions, to the detailed design, further consultation, tender, and construction of the Young Street Plaza.

Background

At its meeting on the 11 December 2023, the Council resolved as follows:

1. THAT Council:

- a) note that a concept design has been developed for the partial reopening of Young Street, Neutral Bay in response to the Council Resolution of 26 April 2022;*
 - b) note ongoing dialogue between TfNSW and Council in relation to the reopening of Young Street, Neutral Bay;*
 - c) note that the concept design developed for the partial reopening of Young Street, Neutral Bay will now be further developed through formal engagement and community consultation; and*
 - d) note that a further report will be brought back to Council in relation to the feedback received in relation to the development of the concept design for the partial reopening Council Meeting.*
- 2. THAT Council note that the speed limit on Young Street is 50km/hour.*

This report responds to item 1c) of the above resolution.

Key objectives of the Young Street Plaza upgrade:

The following key objectives were developed as part of the design brief to inform the development of the concept plans for the upgrading Young Street Plaza. To:

- create open space for recreation and enjoyment by the community;
- develop contemporary, inclusive, and community-driven public spaces based on “Place Making” principles;
- activate public spaces to support local businesses and promote both day and night-time economies;
- enhance the visitor experience, encouraging more outdoor dining and longer visit durations;
- establish Young Street Plaza as a destination, known for its distinctive urban character and the quality of its commercial offerings;
- increase soft landscaping, incorporating decorative planting to enrich the space
- expand North Sydney LGA’s tree canopy, contributing to environmental sustainability;
- improve accessibility for all users, ensuring an inclusive space; and
- ensure compliance with Council’s Public Domain Style Manual and Design Codes, creating visual continuity with the surrounding streetscape, while incorporating “bespoke” design elements that celebrate the uniqueness of Young Street Plaza.

Concept designs were developed in response to these objectives, which were presented to Council at its meeting of 11 December 2023.

Following the resolution of Council, a project-specific engagement strategy was developed to guide the notification and engagement process for the proposed concept design, ensuring broad community awareness and input.

Public Exhibition and Consultation Summary

The concept design for the plaza and safety improvements for Grosvenor Lane was placed on public exhibition from 1 May to 12 June 2024. The exhibition/consultation process was conducted through the following channels, with key figures and notification methodologies outlined below:

- 1,600 visits to the online feedback form, hosted on North Sydney Council’s YourSay consultation webpage;
- 3,600 notification letters distributed to letterboxes of businesses and residents in Cremorne;
- 200 notification letters mailed out to additional stakeholders;
- Online feedback form yielded 90 responses;
- On-site signage, including a QR code, was installed to promote the consultation webpage and raise awareness;
- Promotion via Council e-newsletters;
- Posts on Council’s social media channels;
- Advertisement in the Mosman Daily (Thursday, 9 May 2024, page 5), in compliance with Section 116 of the Roads Act for the road reopening approval process;
- On-site drop-in information sessions held on 10am – 12noon Monday 20 May and 28 May 2024, and 3pm – 5pm Tuesday 28 May 2024, from 3 p.m. to 5 p.m.;
- A Neutral Bay Streetscape Committee meeting was held at Council Chambers on Tuesday, 4 June 2024; and
- a memo was distributed to five nearby Precinct Committees.

Submissions Received

- 77% of feedback was received from residents with the Cremorne / Neutral Bay area;
- 90 responses to the online feedback form;
- 13 written submissions;
- three submissions from Precinct Committees; and
- one submission on streetscape feedback via meeting minutes.

This report focuses on the consultation outcomes related to the proposed plaza design. The feedback received during this consultation period has been reviewed and will be incorporated into the detailed design stage, where appropriate. Further details on the consultation process, including complete submissions and Council’s responses, are included as attachments to this report.

Young Street Plaza Upgrade – Preferred Concept Design

The consultation process demonstrated that the majority of respondents expressed partial or full support for the exhibited option.

Greenery, gardens, walkways, shade, and seating were noted as the most important elements, all of which will be prioritised into the detailed design

Specific design suggestions, which were not documented in the concept design included native plants, non-slip surfaces, and adequate lighting. These will be further developed and incorporated into the detailed design.

Pedestrian safety was raised as part of the feedback. The concept design proposes raised thresholds coming into Young Street and across the Military Road exit and narrowing of the roadway to accommodate wide footpaths on either side of Young Street. These elements will be further developed as part of the detailed design process to further increase pedestrian safety.

Additional details on feedback can be found in Attachments 2 and 3 to this report.

Based on the feedback, it is proposed that the consulted concept design be adopted and further developed for detailed design.



Image 1 – Artist's Impression of preferred concept design Young Street Plaza Upgrade (Military Road view)



Image 2 – Artist's Impression of preferred concept Young Street Plaza Upgrade (Military Road view – Plaza side)



Image 3 – Artist's Impression of preferred concept Young Street Plaza Upgrade (Grosvenor Lane view)



Image 4 – Artist's Impression of preferred concept Young Street Plaza Upgrade (Grosvenor Lane view – Plaza side)

Feedback on Road Reopening / Closure

The road opening / closure of Young Street has been the subject of previous Council resolutions and therefore was not included within the scope of the consultation for the concept designs, however 45 individual submissions and one submission from the Neutral Precinct Committee expressed opposition to reopening Young Street to Military Road.

Traffic Considerations

Council's Traffic and Transport Operations Service Unit reviewed the proposal and the consultation outcomes, and determined the following:

Road Reopening Advertisement

In accordance with s116 of the NSW Roads Act (1993) the proposed road reopening was advertised in the *Mosman Daily* on 9 May 2024. No feedback was received in relation to the advertisement. Council can now proceed to lodge the application for the proposed reopening with Transport for NSW.

Plaza Kerb Alignment Feedback

Feedback was received requesting reinforcement of the left-turn only restriction from Grosvenor Lane into Young Street. This proposal will be addressed as part of a separate report which aims to improve pedestrian safety in the Grosvenor Lane Shared Zone and will inform the final design of the kerb alignment of the intersection

Reopening of Young Street

It is recommended that Young Street be reopened to traffic with egress-only access onto Military Road. This aligns with NSW Road Rules, which require drivers to yield to pedestrians at intersections. Due to the high traffic volumes, particularly from buses on Military Road, left out was considered preferable to left-in from Military Road to reduce the risk of rear end collisions and improved visibility between drivers on Young Street and pedestrians travelling on Military Road

Shared Zone on Young Street

A Shared Zone between Grosvenor Lane and Military Road is not recommended. According to TfNSW Technical Directions for Shared Zones, dedicated pedestrian facilities provide the safest environment for pedestrians. Shared Zones should only be considered where footpaths are not available, and the current proposal includes footpaths on both sides of the street along with an open plaza space.

Pedestrian Safety Design

The proposed design maintains narrow roadways to slow traffic and includes raised continuous footpath treatments at the start and end of the road. These measures will ensure pedestrian priority at key locations and reduce driver speeds through design elements, rather than relying on regulatory signage or enforcement.

Financial/Resource Implications

Council has been provided funding for the upgrade of Young Street through an agreement with TfNSW. \$2,749,042 is available, which will be sufficient for the completion of the design and construction of these works.

Existing internal resources will be utilised to oversee the completion of the detailed design phase and management of tender, through to construction.

It is estimated that the ongoing costs to maintain and renew the assets with the newly created space will be in the order of \$95,000 per annum, which will need to be sourced through existing budgets.

Conclusion

The public consultation for the Young Street Plaza upgrade has generated a range of feedback, with the majority expressing support for the proposed concept design. The design focuses on enhancing public space, accessibility, and overall community amenity.

Feedback raised during the consultation will be reviewed and considered during the design development process. However, no fundamental changes to the overall layout of the concept plan are currently proposed as a result of the community consultation process.

It is considered appropriate that the designs be referred to Council's Access and Inclusion Committee to inform the design development process, should Council resolve to proceed with the development of the concept designs.

Sufficient funding and resources are available to now develop this design through to tender, with construction to be commenced at the end of the 2024/25 financial year. The anticipated timeframes for the next stages of the upgrade are outlined in the table below.

Stage	Dates
Consultation	May – June 2024
Report and adoption	October 2024
Design Consultancy procurement	November 2024
Tender/Construction documentation	November 2024 – April 2025
Construction Procurement	May – June 2025
Construction Commencement	June – July 2025
Completion	December 2025

YOUNG STREET PLAZA UPGRADE

Preferred Concept Design Report - Community Consultation Outcomes

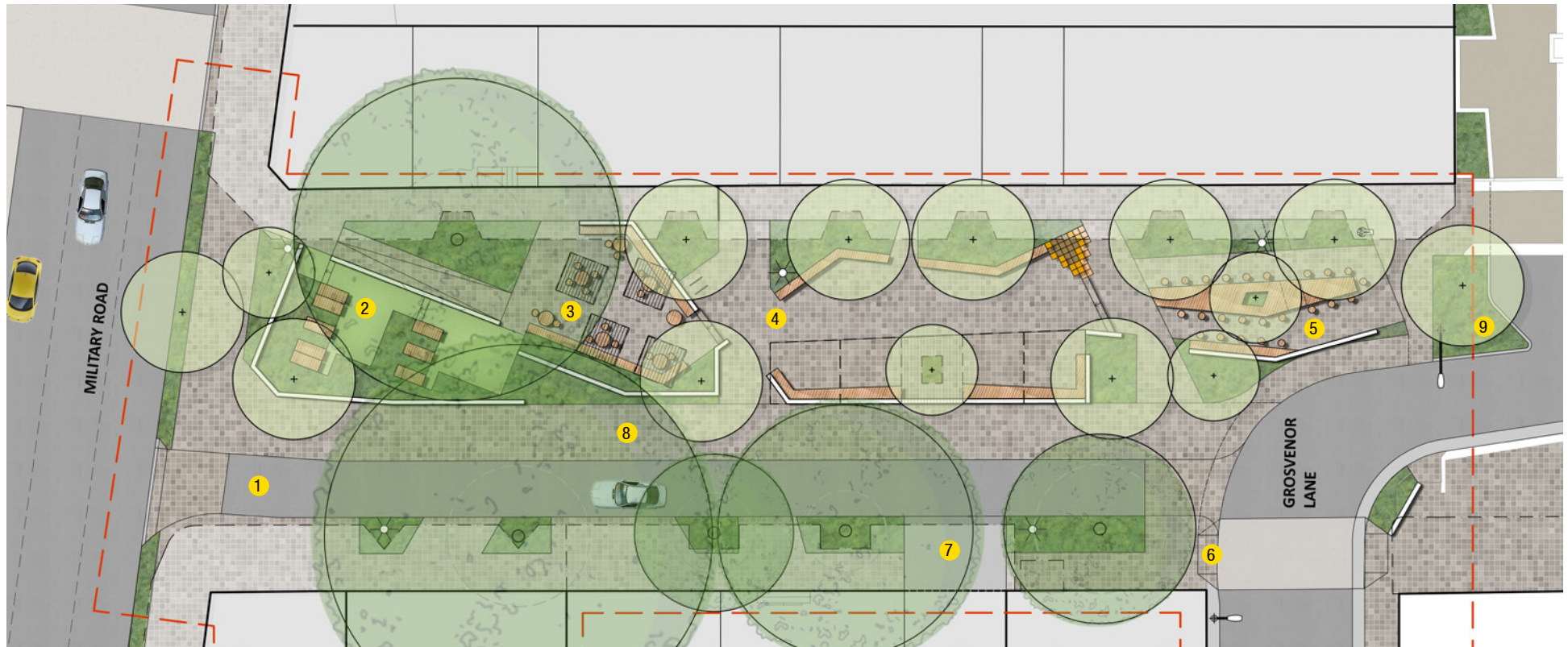


CO N TENTS

CONCEPT PLAN	3
MONTAGES	4-7
MATERIALS PALETTE	8-9
PLANTING PALLETTE	10-11
PRECEDENTS	12-13
ACTIVATION	14
SHELTER AND CANOPY COVER	15
LEVELS AND GRADING	16
PEDESTRIAN MOVEMENTS	17
VEHICULAR MOVEMENTS	18
SWEPT PATHS	19



CONCEPT PLAN



- 1** One way car lane 2.8 metre width. Threshold paving at either end.
Tiered lounging seating under shade of trees well defined by walling and planting to create adequate buffer to Military Rd while responding to existing levels. Opportunity to use walling for signage.
- 2** Cafe style seating area anchored by existing tree and enclosed in planting. Opportunity for smart furniture and umbrellas - fixed.
- 3**

- 4** Seating Zone - various types of seating from lounging decks to conventional seats with portions of space under shelter to maximise use in all weather. Opportunity within the space for contained urban play element (uneven steps blocks align with level change/step).
- 5** The Communal "long lunch" area - features communal tables at two levels for high and lower seating options defined by canopy trees, planting and walling.

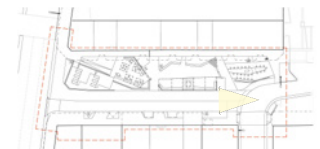
- 6** Eastern side of Young St maintained as pedestrian thoroughfare with existing trees retained and increased planting at ground level. Eastern kerbline
- 7** Existing drive to 3 Young Street to remain
- 8** Temporary pedestrian path to accommodate future bike path, pending concept design and community consultation

- 9** Plaza kerb alignment to reinforce Left turn only from Grosvenor Lane into Young street - this is being proposed to address pedestrians safety in Grosvenor lane shared zone (subject to Council's separate endorsement)



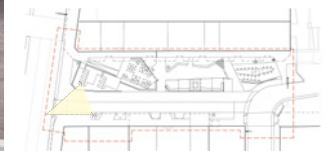


MONTAGE 1 - NORTH STREET VIEW





MONTAGE 2 - SOUTH STREET VIEW



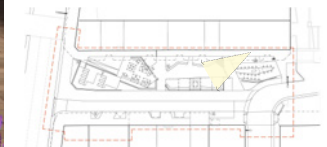


MONTAGE 3 - SOUTH PLAZA VIEW





MONTAGE 4 - NORTH PLAZA VIEW





MATERIALS PALETTE

Built Elements



Walling



Seating



Key Considerations

BUILT FORM

- Creates a sense of human scale and more intimate spaces
- Offers weather protection
- Differentiates spaces
- Provides a horizontal layering effect to the plaza

WALLING

- Creates separation between vehicular and pedestrian spaces
- Provides a sense of safety
- Helps articulate and define spaces
- Can vary in height to reduce vehicular noise

- Can be utilised for signage and placemaking

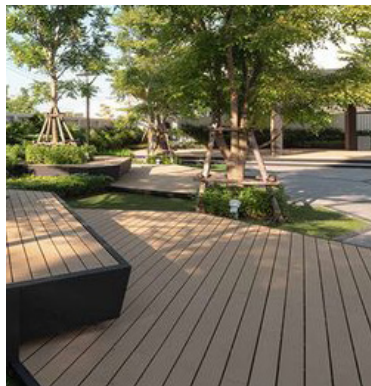
SEATING

- Allow for a variety of seating to support both outdoor dining and lounging areas
- Consider style of seating for each zone which looks cohesive as a whole while defining each zone
- Ensure seating is robust, fit for purpose attractive
- Consider future maintenance and materiality

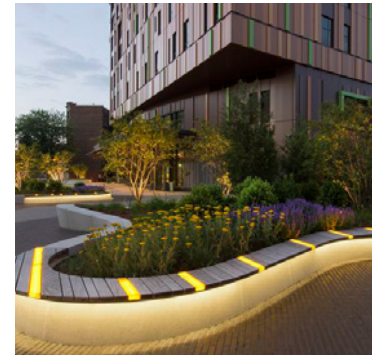
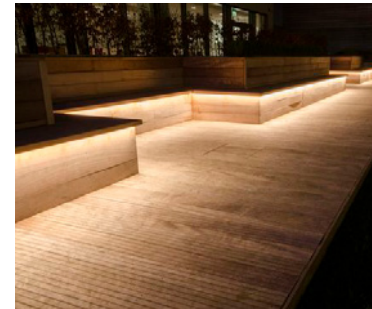
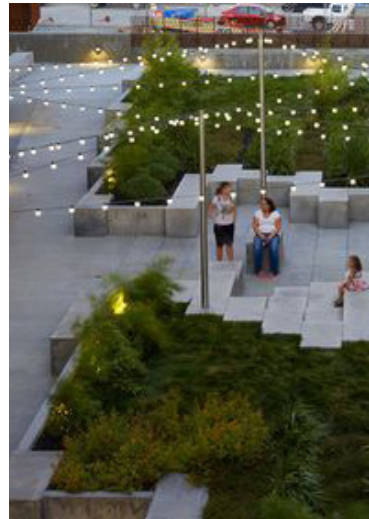


MATERIALS PALETTE

Surface Finishes



Feature Lighting



Key Considerations

PAVER

Use of dark main body paver for plaza to achieve a seamless transition from surrounding streets

Dark colour is more appropriate within areas where food will be consumed - less staining

Dark paver provides contrast with other key materials

Dark paver - proven "fit for purpose"

ARTIFICIAL TURF

Confined to play area

Provides a sense of "green"

Positive endorsement from community

Located under shade of existing tree to reduce heat load

Contextually looks more appropriate than rubber softfall

LIGHTING

Allow for more pedestrian scale lighting to space

Opportunity to overlay feature lighting to walls/seating

Opportunity for cantenary lighting across the space



PLANTING PALETTE

Trees



T1



T2



T3



T3



T1



T2



T4

Key Considerations

TREES

Build upon existing canopy cover, selecting tree species to complement existing trees.

Utilise existing awning cut-outs to add in trees

Locate trees to define movement and where additional canopy cover is required

Plant trees in semi mature sizes for immediate visual impact

Select clean trunk trees for visibility and CPTED, reducing eye height hazards to pedestrians

Create a layering effect at height by using both smaller and larger tree species

Provide a sense of overhead "green"

Allow for seasonal change with deciduous and flowering tree types included

Contribute to NSC's canopy cover targets

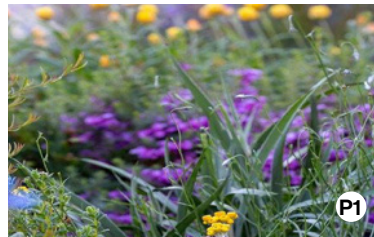
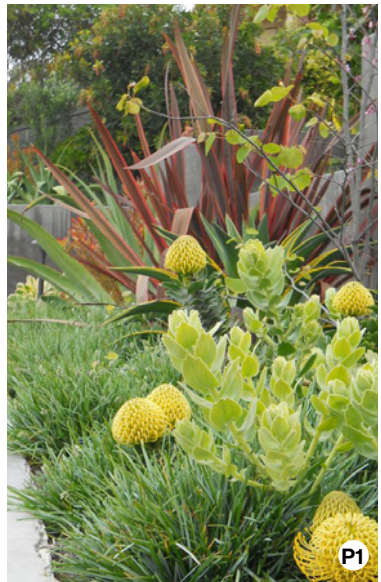
Ensure the space offers summer shade and winter sun

CODE	BOTANICAL NAME	COMMON NAME
T1	<i>Platanus orientalis</i> 'Digitata'	Plane Tree
T2	<i>Pyrus ussuriensis</i>	Manchurian Pear
T3	<i>Lagerstroemia indica</i> 'Natchez'	White Crepe Myrtle
T4	<i>Flindersia australis</i>	Crows Ash



PLANTING PALETTE

Groundlayer planting



Feature Pots



Key Considerations

GROUNDLAYER PLANTING

Create interest and diversity with mixed planting which provides seasonal colour and texture

Utilise a mix of native and exotic planting which is hardy and drought tolerant

Ensure planting heights respond to CPTED guidelines

Consider long term maintenance

POTS

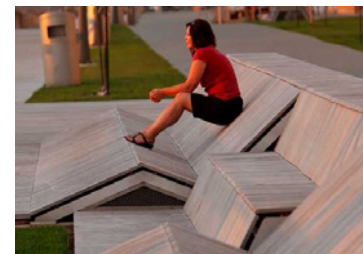
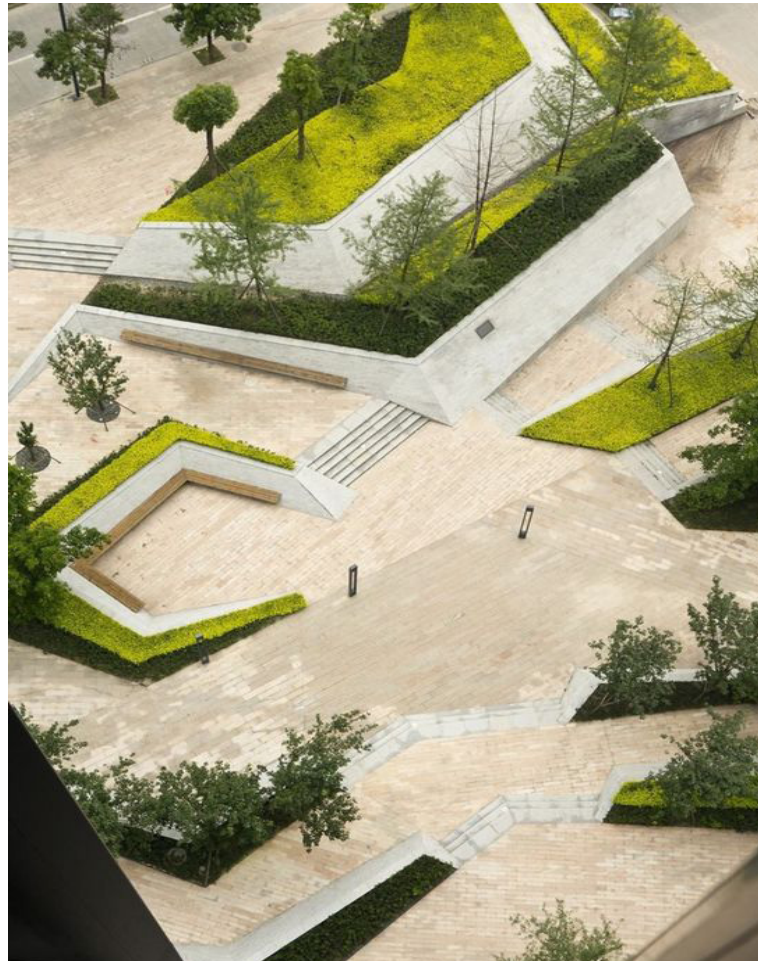
Re-use existing pots and planting where possible as incidental focal points strategically placed for maximum impact

Allow for planting rotation to pots - living colour displays

CODE	PLANTING STYLE	LOCATION
P1	Planting at grade	To edges of the plaza, particularly under existing and new trees and to Military Road
P2	Raised planters	Used to define spaces within the plaza and accommodate level changes
P3	Large pots	Scattered throughout the plaza, clustered in groups to provide "living colour" seasonal displays

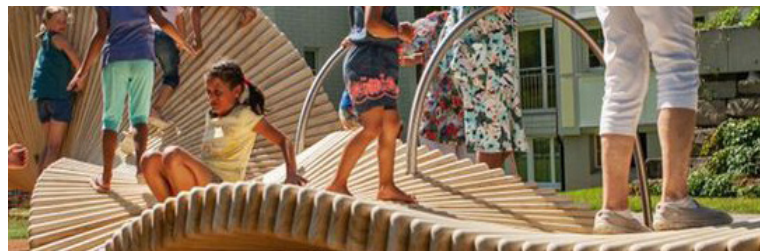
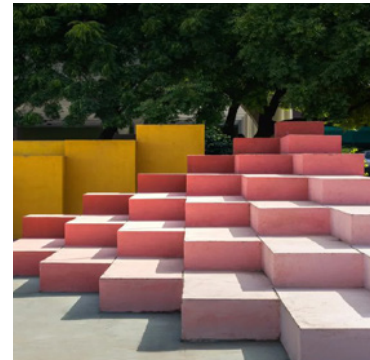


PRECEDENTS



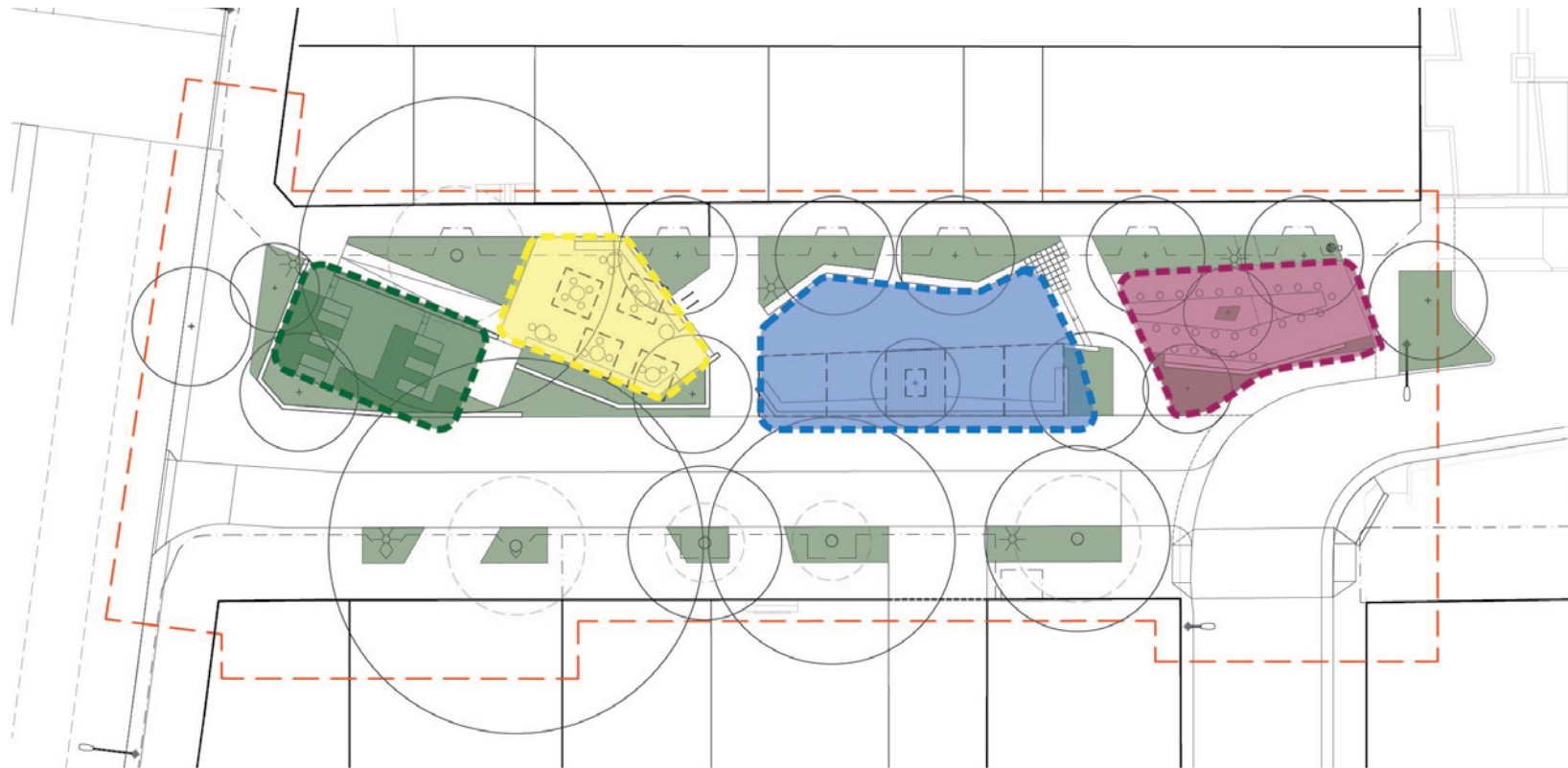


PRECEDENTS PLAY





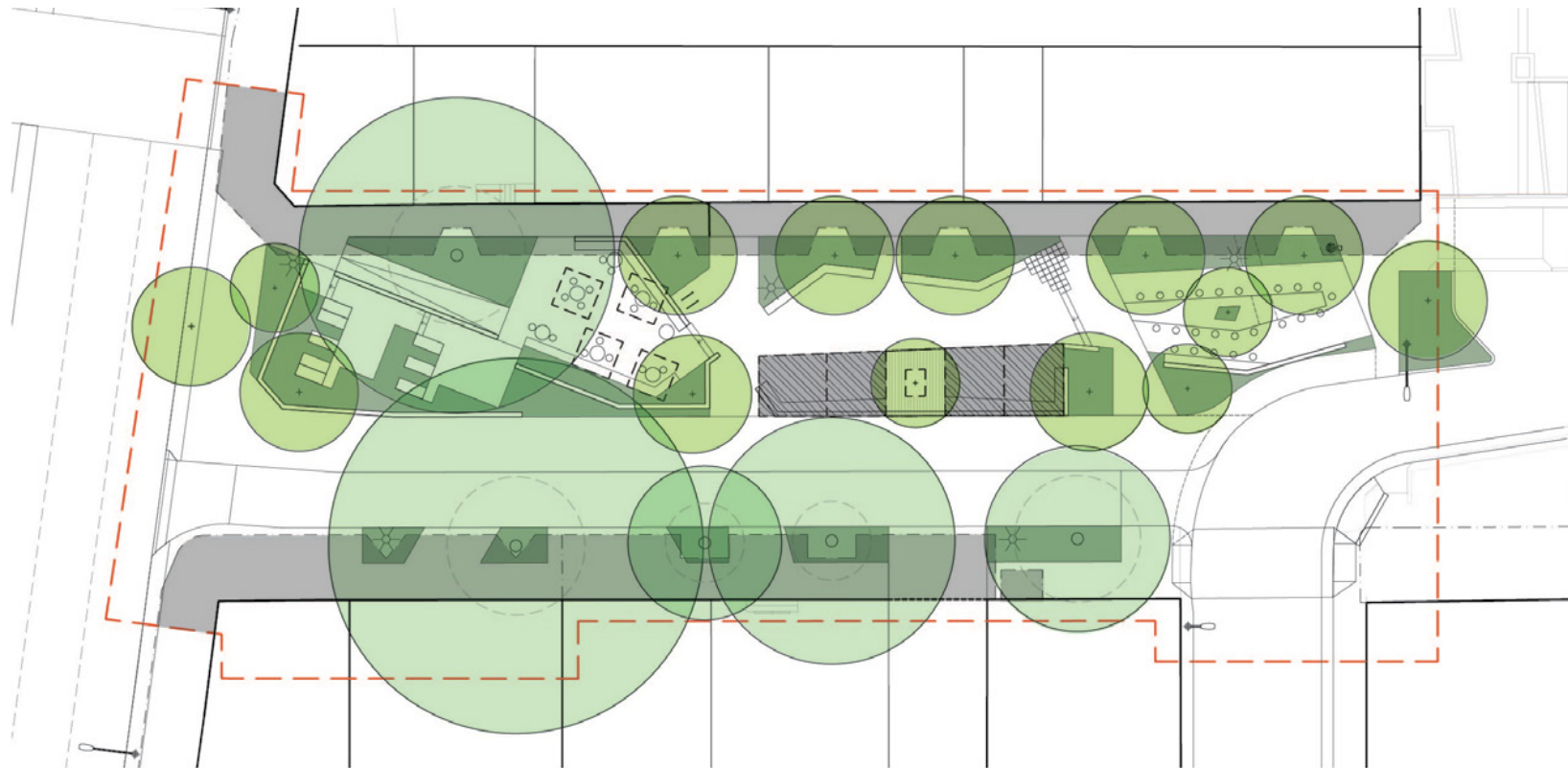
ACTIVATION







-  LOUNGING ZONE
-  CAFE ZONE
-  URBAN PLAY ZONE + LOUNGING ZONE
-  COMMUNAL DINING



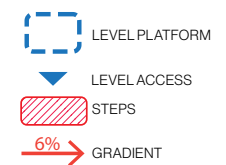
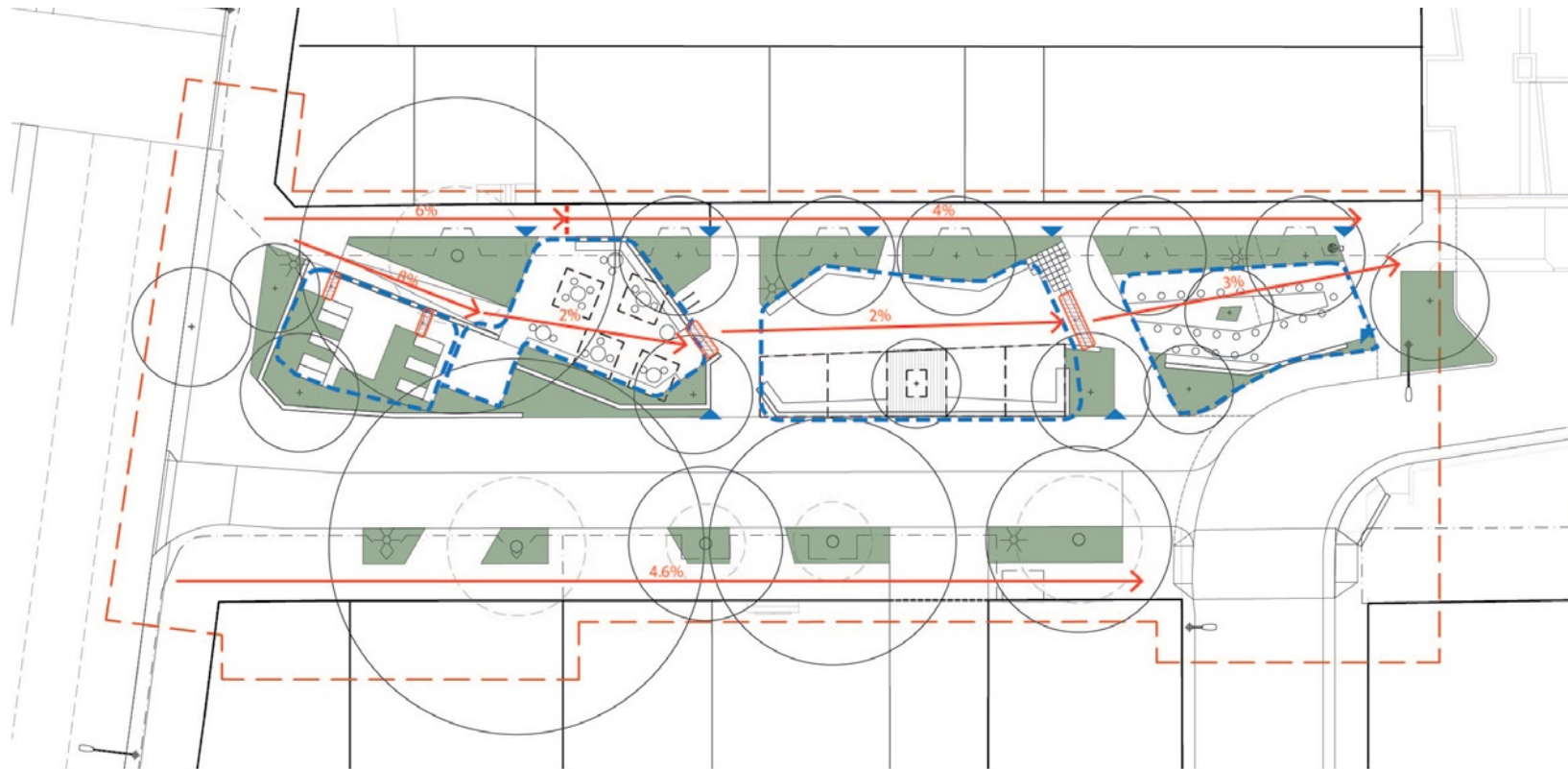
SHELTER AND CANOPY COVER



-  EXISTING TREE CANOPY
-  PROPOSED TREE CANOPY
-  EXISTING AWNING
-  PROPOSED ALL-WEATHER SHELTER

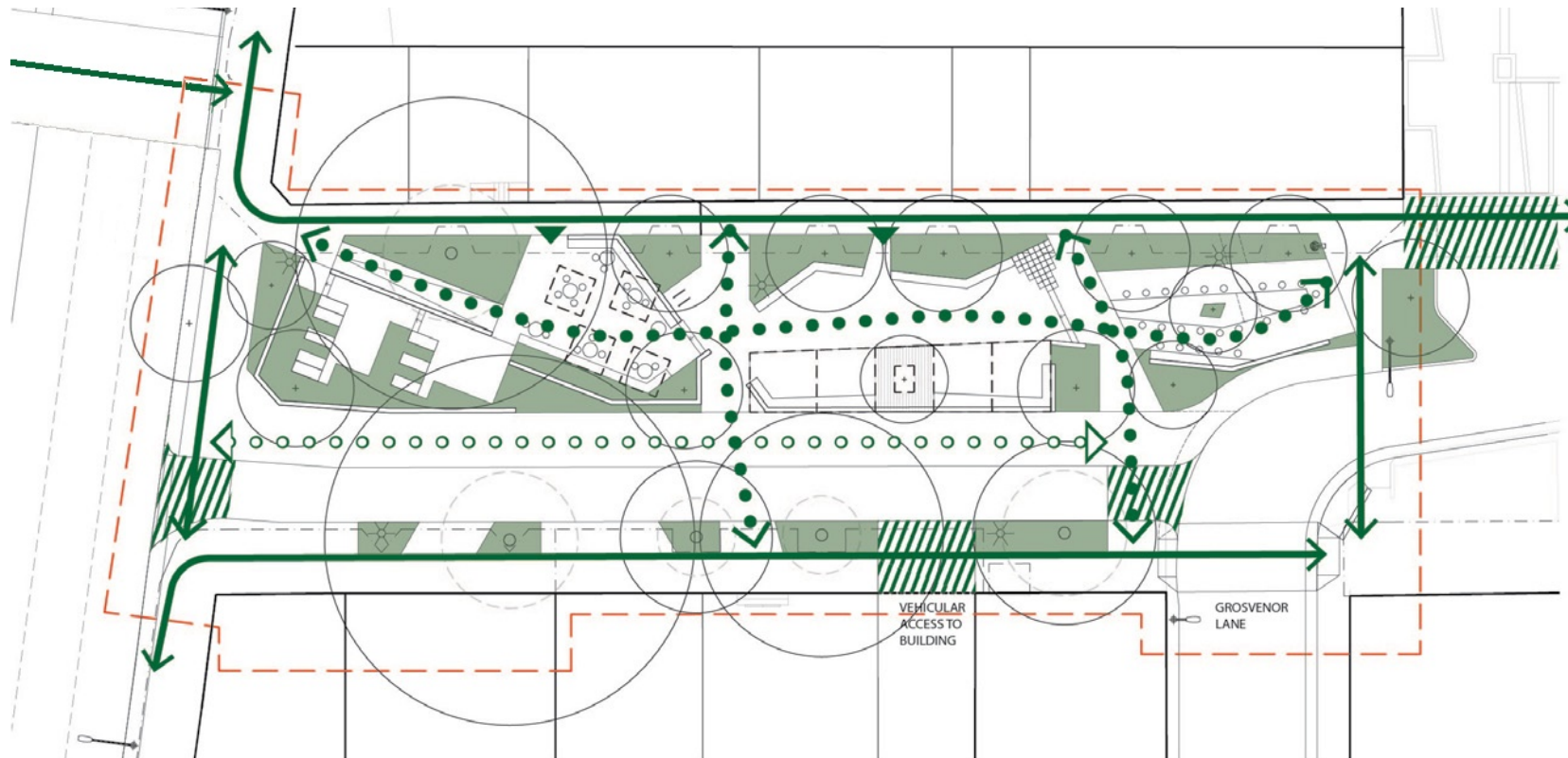







LEVELS AND GRADING





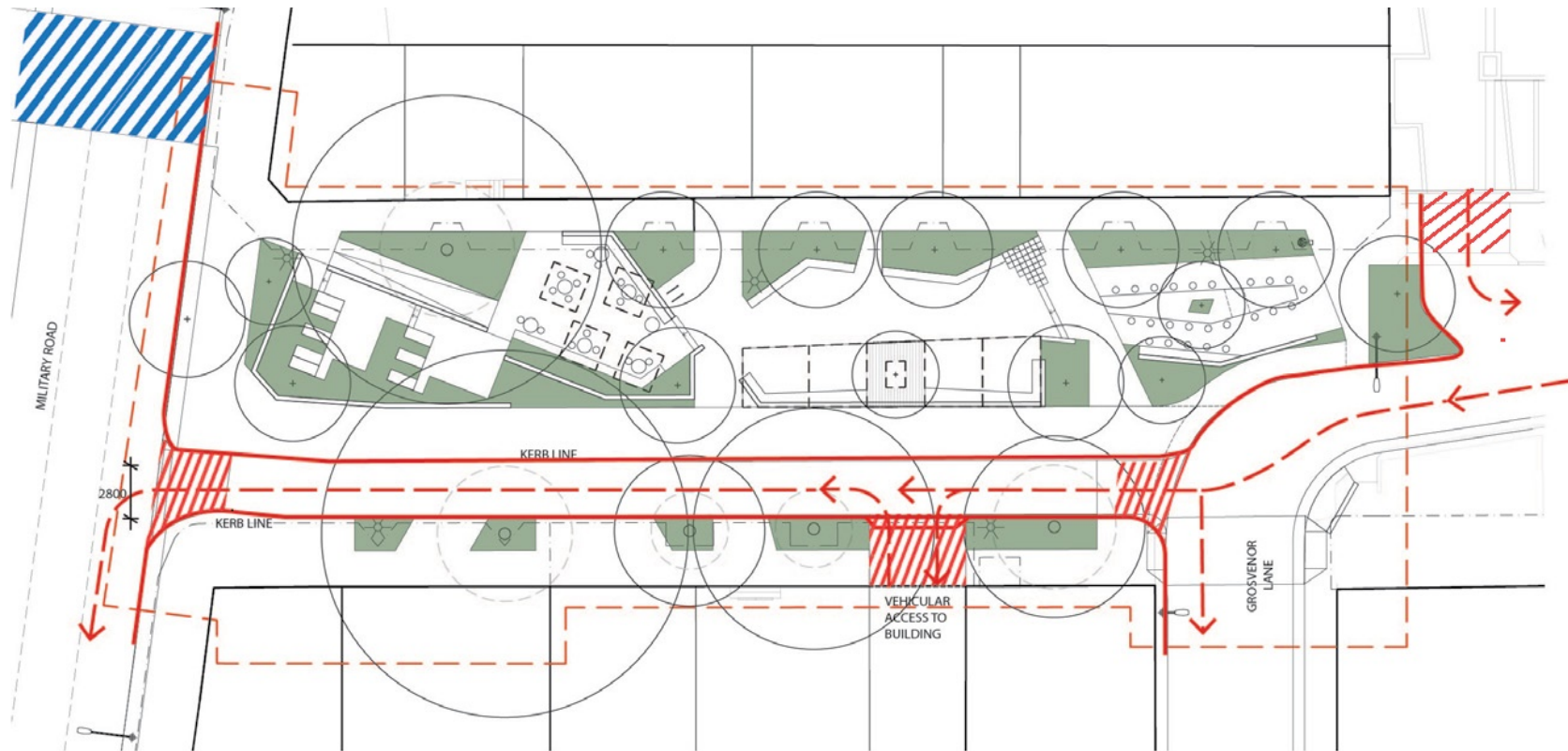
PEDESTRIAN MOVEMENTS



-  PRIMARY PEDESTRIAN MOVEMENT
-  SECONDARY PEDESTRIAN MOVEMENT
-  TEMPORARY PEDESTRIAN PATHWAY
-  RAISED THRESHOLD TREATMENT
-  AT-GRADE PEDESTRIAN CROSSING



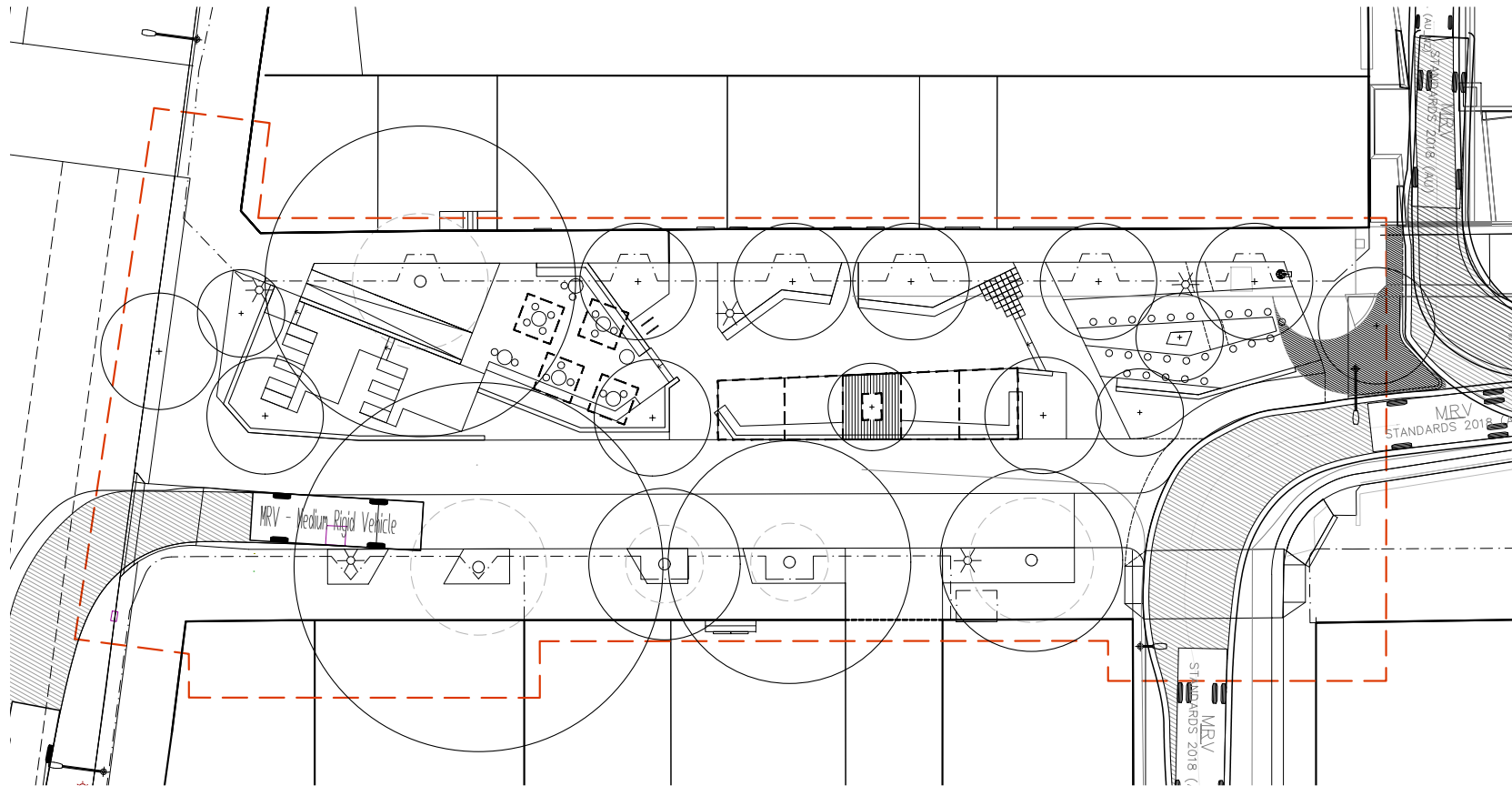
VEHICULAR MOVEMENTS



- PROPOSED KERB LINE
- - - - - VEHICULAR MOVEMENT
- ////// RAISED THRESHOLD TREATMENT
- /// SIGNALISED CROSSING



SWEPT PATHS



Public Exhibition and Consultation Summary - Proposed Young Street Plaza Upgrades

This attachment provides a summary of all activities undertaken during the Public Exhibition and Consultation for the Young Street Plaza Upgrade engagement, including detailed survey, freestyle submissions, streetscape committee and drop-in sessions aimed to raise awareness about Council's concept proposal. Additionally, this attachment summarises the feedback received.

1. Online feedback form

The online feedback form, hosted on North Sydney Council's Your Say site, provided the public with a concept design for the plaza, asking if they supported the proposal, together with any other general feedback. 90 submissions were received, the results are collated and summarised below. Analysis was conducted in-house.

1.1. About the respondents

The following table summarises the residency of respondents' relationship to Young Street Plaza. The majority of feedback received was from participants who live in the Neutral Bay and Cremorne area (77%).

Respondents' suburbs	No.
Cammeray	4
Cremorne	31
Cremorne point	1
Crows nest	1
Kurraba Point	1
Mosman	1
Neutral Bay	38
Neutral Bay	6
North Sydney	2
St Leonards	2
Sydney	1
West Pymble	1
Willoughby	1
Total responses	90

Table 1 - Summary of respondents' suburb of residency

1.2. Proposal support

Do you support the proposed design for the plaza?

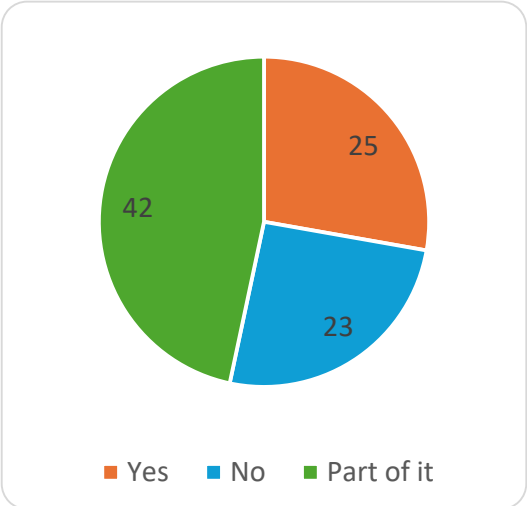


Figure 1 - Young Street Plaza Upgrade concept proposal support

The online survey allowed respondents the opportunity to select one of the following options:

- Yes.
- No.
- Part of it.

47% of respondents selected “Part of it”, 28% selected Yes and 26% opposed to the proposal by selecting No.

1.3. Plaza expected use

What are you most likely to use Young Street Plaza for?

The online survey allowed respondents the opportunity to select from the following options:

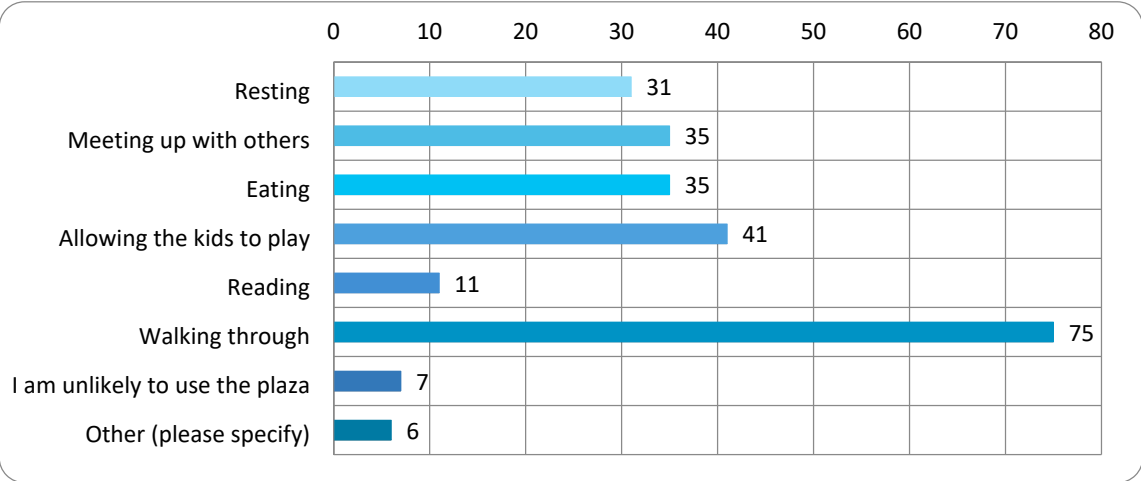


Figure 2 - Young Street Plaza Upgrade most likely to be used for

The survey allowed respondents to select multiple options which saw the following results:

Multiple selections from one person	Times this happened
4+	22
3	25
2	15
1	25
0	3

'Walking through' was the most popular response, indicating that the plaza is a popular transit area. 'Allowing the kids to play' was a popular response, showing that the plaza is favoured among families with children. 'Meeting up with others' and 'Eating' responses suggest that the plaza serves as a social hub. 'Resting' responses indicate that a good number of people use the plaza for relaxation.

A lower number of respondents selected 'Reading' as an activity, indicating that the plaza is less commonly used for this purpose.

A small percentage of people are not interested in using the plaza, with seven respondents selecting 'Unlikely to use the plaza.'

Six respondents selected 'Other.' Of these, two suggested that they would use the plaza to cycle through, two specified that they preferred the space to be open to traffic, one referenced a different project site in the Neutral Bay Area, and one noted that they would like to be able to turn left from Military Road into Young Street.

The responses indicate the area will have high pedestrian traffic and need to be provided with clear pathways for navigation. The space is also perceived as a social and family-oriented space, highlighting the plaza's role as a community gathering spot. The space is also seen as a place for resting with responses suggesting the need to provide seating and shaded areas.

1.4. Plaza expected features

What are the most important features Young St Plaza should have?

The online survey allowed respondents the opportunity to select from the following options:

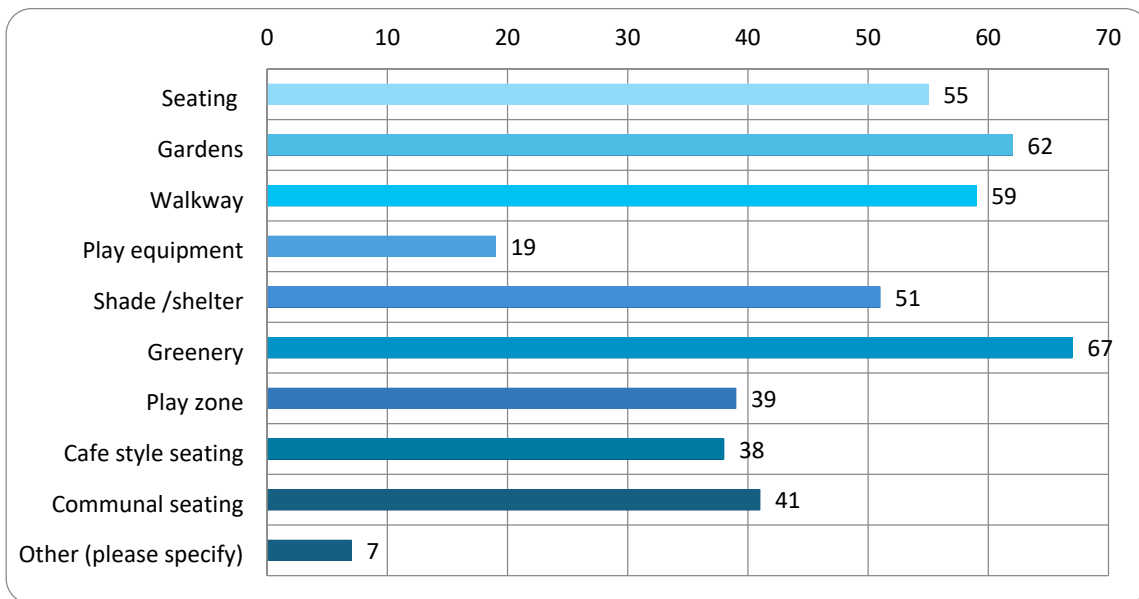


Figure 3 - Young Street Plaza Upgrade expected features

The survey allowed respondents to select multiple options which saw the following results:

Multiple selections from one person	Times this happened
4+	60
3	14
2	6
1	5
0	5

The selections made by the respondents can indicate the important aspects to be considered in the detailed design of the plaza.

Features Selected	Times Selected	Indicate
Greenery	67	a preference for vegetation to enhance the plaza's atmosphere and the preference for green spaces to enhance the plaza's aesthetics and provide natural surroundings.
Gardens	62	
Walkway	59	highlighting the importance of clear pathways throughout the plaza
Seating	55	the need for comfortable and accessible relaxation areas
Shade /shelter	51	protection from sun and weather conditions
Communal seating	41	a preference for areas that facilitate group gatherings and community interactions
Play zone	39	a desire for areas dedicated to recreational activities
Cafe style seating	38	support for spaces that encourage social interaction and dining
Play equipment	19	a need to cater to families with children
Other (please specify)	7	

Seven respondents selected 'Other' and went on to provide additional suggestions and preferences for specific amenities or features that suit their needs

- Four suggested to reinstate the road as before to include road access for two-way traffic.
- One suggested the need for shading and rain protection, sound and dirt barrier, and to not reopen the road to traffic.
- Another believed a cycle path as an important feature for the plaza
- One suggested noise mitigation from Military Road

These responses highlight a diverse range of preferences among respondents for the features they consider important for Young St Plaza. By prioritising elements such as ample seating, gardens, well-defined walkways, and amenities like play equipment and shaded areas, the plaza can cater to various needs and preferences within the community. This collective feedback emphasises the need to create a plaza that supports recreational activities and social interactions, ensuring it serves as a functional and inclusive space for residents.

1.5. Feedback on the proposed concept design option

Respondents were given the chance to respond to the question – "Please provide your feedback on the proposed concept design option." The responses are summarised and analysed below:

1. **Positive Feedback:** Comments such as "It looks good" and expressions of support for enhancing community space were common among the responses. Many respondents appreciated the potential for improved aesthetics and community use, highlighting features like open space, greenery, and seating.
2. **Concerns about Traffic and Safety:** Concerns were raised on safety issues with proposed traffic flow, advocating for clear separation between pedestrian areas and vehicle lanes.
3. **Mixed Opinions on Traffic Access:** There was a split between those supporting and opposing opening Young Street to traffic. Supporters argued for improved access and traffic flow benefits, while opponents cited safety risks, congestion concerns, and the impact on pedestrian-friendly environments.
4. **Specific Design Preferences:** Requests for specific design elements like more greenery, seating, shade, and effective drainage were frequent. Suggestions included native plants, non-slip surfaces, adequate lighting, and designs that cater to diverse community needs, such as families with young children.
5. **Pedestrian Priority:** Feedback comments emphasised prioritising pedestrians over vehicles. Suggestions included maintaining or enhancing the plaza as a car-free zone, ensuring safety from traffic, and promoting a welcoming environment for pedestrians and cyclists.

6. **Critiques of Current and Proposed Designs:** Criticisms of existing setups and concerns about proposed changes were notable. Issues raised included the adequacy of current traffic management, the impact on nearby businesses, and the need for effective signage and traffic calming measures.
7. **Community Engagement and Inclusivity:** Comments highlighted the importance of community input and inclusivity in the design process. Suggestions included ongoing community consultation, accessibility features, and ensuring the space caters to a wide range of ages and abilities.
8. **Environmental and Aesthetic Concerns:** Several comments focused on environmental impacts and aesthetic considerations. Requests included using sustainable materials, minimising noise pollution, incorporating natural elements like trees and native plants, and maintaining cleanliness and attractiveness of the space.
9. **Support for Public Amenities:** Support for amenities like shaded seating, play areas for children, and facilities for community events was expressed. Suggestions included flexible spaces for gatherings, facilities for cultural events, and amenities that encourage social interaction and community cohesion
10. **Calls for Integrated Planning:** Suggestions to integrate the plaza design with broader urban planning initiatives were frequent. Comments included linking the plaza redevelopment with nearby developments, ensuring coherence with future infrastructure plans, and addressing wider traffic management issues in the area.

The received feedback reflects the diverse range of opinions and suggestions expressed by stakeholders, highlighting both support for enhancing community space and specific concerns about traffic, safety, and design details. While the majority is in favour of the proposed design for its potential to improve traffic flow and support local businesses, the consensus leans toward prioritising pedestrian safety.

When analysed separately, the 23 respondents that do not support the plaza as proposed, provided further feedback. The summary of feedback included:

- **Pedestrian Safety and Ambiance:** Some respondents expressed concerns that introducing one-way car traffic could affect the pedestrian friendly nature of the plaza. They emphasised the importance of prioritising pedestrian safety and maintaining the area's current atmosphere.
- **Alternative Access Routes:** A number of respondents suggest exploring other options for accessing Military Road, such as using nearby intersections like Ben Boyd Road, to avoid reintroducing traffic to the plaza.
- **Traffic and Congestion Concerns:** There are concerns about potential traffic congestion and safety hazards at the intersection of Young Street and Military Road. Some suggest modifying traffic flow directions or reconsidering left-turn restrictions on Grosvenor Lane.

- Plaza Usage and Design: Opinions vary on the current use of the plaza. Some believe it is underused and question the need to open Young Street to traffic, while others think it could reduce congestion on Ben Boyd Road and improve local access.
- Opposition to Traffic Reintroduction: Several respondents oppose reopening the plaza to traffic, citing safety concerns for pedestrians and children, potential loss of play areas and mature trees, and possible negative impacts on local cafes.
- Support for Pedestrian-Only Spaces: Some respondents prefer maintaining a car-free zone to create a safe, enjoyable space for pedestrians, especially in higher-density areas.

Additionally, the 42 respondents that supported part of the plaza as proposed provided further feedback and the summary of the feedback included:

- Pedestrian Safety: Concerns were raised about potential safety risks for pedestrians, especially children, if traffic is introduced near the play area. Suggestions include implementing clear safety measures and adequate separation between pedestrian and vehicular zones to mitigate these concerns.
- Traffic Access Considerations: While some support improved access to Military Road, others highlight potential traffic flow challenges, particularly for residents using Grosvenor Lane. Suggestions include adjusting traffic directions to alleviate congestion on nearby roads such as Waters Road and Ben Boyd Road.
- Views on Traffic Flow: There is varied support for the current design's potential to improve local traffic flow and provide better access to businesses on Young Street. Recommendations include optimising traffic directions to better accommodate local traffic patterns and needs.
- Opposition to Vehicle Access: A notable portion of respondents oppose reintroducing cars, preferring a pedestrian-only environment with more greenery and safe play areas for children. Concerns focus on maintaining the current peaceful ambiance and avoiding potential safety hazards associated with vehicle presence.
- Infrastructure and Design Improvements: Suggestions include enhancing drainage capabilities, ensuring clear signage, and implementing effective traffic management measures at intersections. There are also calls for using durable materials suitable for heavy use and weather conditions.
- Community Preferences: Many expressed a strong preference for keeping the plaza car-free, emphasising its role as a community-focused space for relaxation, socialising, and safe recreation for children.

For detailed feedback refer separate attachment called Young Street Plaza Upgrades - Feedback form Consultation Submissions summary.

1.6. Suggestions to Council to make the space great

Respondents were given the chance to respond to the question – “Do you have any other suggestions about how Council can make this public space great?”. 41 respondents provided additional suggestions and their responses are summarised and analysed below:

1. Traffic Management: No cars allowed, promote pedestrian safety (10 mentions).
2. Safety Concerns in Grosvenor Lane: Address driver’s behaviour on the intersection of Grosvenor Lane and Young Street, enforce vehicles stopping and give way to pedestrians (7 mentions).
3. Pedestrian-Friendly Spaces: Prioritise foot traffic, allocate parking for disabled (6 mentions).
4. Improved Amenities: Create vibrant, safe environments with seating and green spaces (5 mentions).
5. Evening Lighting: Enhance lighting for lively evening atmosphere (4 mentions).
6. Integration of Natural Elements: Preserve trees, use greenery and classic-style seating (4 mentions).
7. Innovative Design and Implementation: Creative design proposals prioritising pedestrians (3 mentions).
8. Noise Mitigation: Add sound barriers on Military Road (3 mentions).
9. Mixed-Use and Accessibility: Incorporate mixed-use spaces and terracing (2 mentions).
10. Mixed feedback: Acknowledge polarised opinions (2 mentions).

For detailed feedback refer separate attachment called Young Street Plaza Upgrades - Feedback form Consultation Submissions summary.

2. Neutral Bay Streetscape committee

Council staff held an extraordinary Neutral Bay Streetscape committee meeting at the Council Chambers on 4 June 2024 with eight attendees. The attendees included six members of the Neutral Bay Chamber of Commerce, one resident and one business representative. The highlights and background of the concept design was presented to the attendees, and a discussion was facilitated to collect general feedback. The feedback collected is summarised below:

Concerns were raised about traffic safety when turning left from Young Street onto Military Road, particularly in relation to buses and high-speed traffic coming down from near the Oaks. The importance of addressing these issues due to potential risks was emphasised.

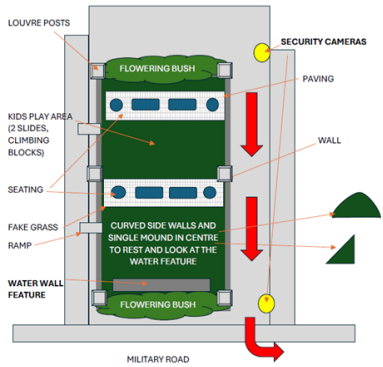
The need to minimise traffic flow through Young Street, given its concentration of cafes, restaurants, and bars, was advocated for. Commendation was given to the effective traffic calming measures in Grosvenor Lane, and the successful integration of restaurants with the Oaks in Grosvenor Street was highlighted, emphasising its vibrant nightlife.

Regarding the proposal, support was expressed for maintaining narrow roads and implementing threshold treatments to ensure a low-speed environment. Interest was expressed in activating public spaces with events like markets and craft beer gatherings. Plans were confirmed by Council's Engineering Project Manager to maintain accessible, ground-

level spaces within the proposal for various activities, including provisions for disability access.

3. Direct mail feedback

Free-form feedback submissions were received via email. The summary of the feedback received in the table below:

Submitter	Summary
<p>Submitter Name withheld</p>	<p>The proposed Young Street plaza design has been deemed boring and unviable. The open plan seating and eating areas with Plane trees are impractical, requiring either tree removal or a louvred roof to ensure usability in all weather and facilitate clean-up of plane trees' toxic VOCs. Without these changes, the project risks being a waste of money. The design needs to be more attractive to tourists. Suggestions include elevating the green area to kerb level to prevent flooding, installing a louvred cover, using good quality synthetic grass for children's play areas, adding a wall water feature with lights to block Military Road noise, and enhancing security with cameras, spotlights, and speakers with nature sounds. Additionally, entry points should be restricted to disabled access only to prevent bike entry. Suggested layout below:</p> 
<p>Submitter name withheld</p>	<p>The feedback on the Young Street Plaza Upgrade proposal includes the following points: the reopening of Young Street to allow traffic flow onto Military Road is supported, with a recommendation to ban large diesel trucks used by Woolworths due to their impact on alfresco living and cyclists.</p> <p>It is suggested that traffic from Grosvenor Lane be permitted to turn left or right into Young Street, considering ongoing discussions about key planning issues, such as partial parking to support ten shops and the Coles redevelopment plan.</p> <p>Concerns about over-development between Grosvenor Street and Square, including Grosvenor Lane, are noted. Traffic surveys show significant flow similar to Grosvenor Street, with 80% turning right into the square.</p> <p>Existing congestion issues on Grosvenor Street are highlighted, where traffic can back up from Ben Boyd Road to the Roundabout, taking up to 20 minutes to enter Military Road. Diverting all Grosvenor Lane traffic to Military Road could worsen congestion.</p> <p>Until final details of the Coles redevelopment and its underground parking are</p>

Submitter	Summary
	<p>known, it is estimated that 300-400 parking bays will be needed, raising concerns about over-development and traffic congestion from four levels of parking.</p> <p>It is suggested that traffic from Grosvenor Lane into Young Street be allowed to turn left or right until future traffic flows and plans are finalised, to maintain the viability of shops in the square and minimise traffic in Grosvenor Street.</p>
Submitter name withheld	<p>Request for the provision of a facility for Commercial Properties facing Young Street to leave their garbage bins. It was understood that the suggestion would be taken "on board." The proposed upgrade is appreciated as the current state is an eyesore.</p> <p>The suggestion was to provide an enclosed structure for commercial bins, similar to those in some strata properties, possibly located between the trees in the proposed plans, or designated areas on both footpaths to avoid becoming an eyesore.</p> <p>An update on the current proposal to address the garbage bin issue is requested.</p>
Caller name withheld	Requested additional information how to make her submission and expressed she opposed to the waste of tax payers money.
Caller name withheld	Complain about the parking in The Coles development and how the effect of the construction will affect the business and property owners.
Caller name withheld	Property owner on Young Street called to request additional information in regards the timing of the project, Council's project manager explained to him and provided a high-level timeline.
Submitter name withheld	The proposal is generally supported, but it is believed that the numerous low-height walls separating areas of the plaza should be reduced or eliminated. These walls create visual and physical barriers, despite their purpose of delineating areas and accommodating level transitions. It is suggested that bermed, mounded, or sloping landscaped areas be used instead, increasing soft landscaping and making the plaza more connected and inviting. This would also reduce construction costs. An exception is the wall flanking Military Road, which should be increased in height to create an effective noise and visual barrier, ensuring the plaza remains a welcoming 'people place' without being dominated by Military Road's noise and sightlines.
Submitter name withheld	"I agree with what the Council has planned for this plaza"
Submitter name withheld	"Please keep Young Street as is. Children can play safely; people stroll knowing no cars will put them at risk. If you open access to cars next to children's play area, where is the safety in that."
Neutral Precinct Minutes 10 Attendees 14 May 2023	<p>Attendees at the Precinct meeting were given the background to the Young Street plaza and were shown the proposed plan for the plaza. The new plans propose to open Young Street to enable cars turning left onto Military Road.</p> <p>After some discussion, including the discussion from residents that Neutral Bay has very little green space and therefore a plaza is a welcome addition to the area, however, the residents expressed concerns about reopening the road to traffic as this would diminish the purpose of the plaza and some concerns were expressed regarding pedestrian safety utilising the plaza.</p>

Submitter	Summary
	<p>It was decided to submit the following motion to Council as feedback on the proposed upgrade:</p> <p>Motion: Residents are in total support for the Young Street Plaza. We are however, not in support of reopening Young Street to cars turning left onto Military Road.</p> <p>The motion was carried unanimously.</p>
<p>Parks Precinct 10 Attendees 15 May 2014</p>	<p>From the meeting minutes - Young St Plaza Proposal and Grosvenor Lane Following discussion, the following motions was proposed by GD:</p> <ol style="list-style-type: none"> I. Parks Precinct supports the proposed upgrade of Young St Plaza on the basis that the left turn only between Grosvenor Lane and Young St is maintained in the proposal and enforced to the extent that physical barriers such as bollards are installed to prevent any circumvention of the Left turn only. The motion was seconded by ES and carried unanimously. II. Parks Precinct urge the North Sydney Council to use funds allocated to the Young St Plaza upgrade to modify the Grosvenor Lane pedestrian shared zone to minimise the comingling of pedestrians and vehicles. For the avoidance of doubt this means: <ol style="list-style-type: none"> a. Removing the choke points that funnel pedestrians into the path of vehicles b. Redesigning the lane to ensure it is both wheelchair and pram accessible c. Installing a pedestrian crosswalk on the footpath at the intersection of Young St and Grosvenor Lane. <p>The motion was seconded by ES and carried unanimously.</p> <p>Chair will note Precinct comments on Your Say. Residents are encouraged to comment individually. The proposal is open for comment on the North Sydney Council website until 12th June (https://yoursay.northsydney.nsw.gov.au/young-st-plaza-upgrade/surveys/young-street-plaza-upgrades).</p>
<p>Brightmore Precinct 17 Attendees 12 June 2024</p>	<p>From the meeting minutes. Precinct viewed and discussed the plans on exhibition. It was noted the kerb was to be redesigned to direct traffic to turn left into Young Street from Grosvenor Lane. One Precinct member was concerned this would direct traffic onto Grosvenor Street, but other Precinct members supported this change. Cr Spenceley advised TfNSW would not support fully reopening Young Street or allowing vehicles to turn left off Military Road into Young Street as this would slow the B-Line bus service. Precinct agreed to take two straw polls, the first including the option of fully reopening Young Street so that Precinct members could express their preference for this, and the second excluding that option on the basis that it would not be possible. In each poll there were two abstentions.</p> <p>Straw Poll 1</p> <ul style="list-style-type: none"> • Full reopening of Young St: 5 votes • One lane traffic as per exhibited plan: 5 votes

Submitter	Summary
	<ul style="list-style-type: none"> • Fully closed, plaza only 7 votes <p>Straw Poll 2</p> <ul style="list-style-type: none"> • One lane traffic as per exhibited plan: 9 votes • Fully closed, plaza only 8 votes
Submitter name withheld	<p>The proposed upgrade has been noted. The Young Street Plaza, as initially implemented, is considered an eyesore and a waste of resources. The proposal for traffic to turn left from Young Street into Military Road is seen as illogical, as it would confront buses stopping ahead and increase accident risks. It would also force construction trucks to use the congested Grosvenor Street. It is suggested that traffic turn left from Military Road into Young Street instead. Appreciation is expressed for the opportunity to provide feedback.</p>
SoCal Neutral Bay	<p>Strong support for the proposed Young Street Plaza Upgrade has been expressed on behalf of SoCal, Neutral Bay. As a local business, it is believed that this upgrade is crucial for revitalising the area. The road closure has added to the hospitality industry's challenges, reflecting neglect and necessitating action to rejuvenate Young Street.</p> <p>Since 2020, there has been active engagement with the local council to advocate for changes that improve infrastructure and attract foot traffic. A vibrant Young Street Plaza is seen as beneficial for all businesses along this thoroughfare.</p> <p>The upgrade is expected to create a more welcoming environment, enhance the area's appeal, and foster economic growth and community spirit. It should also alleviate some hardships faced by the hospitality industry, providing a much-needed boost to recovering businesses.</p> <p>In conclusion, the Young Street Plaza Upgrade is urged to be prioritised as a crucial step towards the neighbourhood's rejuvenation. Support and collaboration with the council are offered to ensure the success of this endeavour.</p>

Table 2 - Summary of Free form Submissions during Public exhibition

4. Drop-in Information Session

Council staff met community members in a casual environment. The summary of the feedback collected is listed below:

- Majority of the attendees supported the proposal for the plaza.
- Suggestions were made to keep the road closed, while others would prefer the road to be returned to full road access with on-street parking.
- Emphasis on the need for maintenance planning, including regular cleaning of plaza features.
- General support for more greenery and softscape
- Concerns were raised in regard to the safety of Grosvenor Lane Shared zone, and heavy traffic in other streets in the surrounding area.
- Some community members came to the drop-in session to raise concerns about the future plans on the Coles site and Grosvenor Lane public parking.

Young Street Plaza Upgrade – Neutral Bay Online Survey submissions received during public exhibition period.

Prepared August 2024

The following criteria are used to analyse all submissions received, and to determine whether or not the proposed concept design would be amended:

1. The concept design **would be** amended if the point:
 - a. provided additional information of relevance.
 - b. indicated or clarified a change in government legislation, Council's commitment, or management policy.
 - c. proposed strategies that would better achieve or assist with Council's objectives.
 - d. was an alternate viewpoint received on the topic and is considered a better option than that proposed in the Draft Plan/Policy or;
 - e. indicated omissions, inaccuracies or a lack of clarity.

2. The concept design **would not be** amended if the point:
 - a. addressed issues beyond the scope of the Plan/Policy.
 - b. was already in the plan/policy or will be considered during the development of a subordinate plan/procedure (prepared by Council).
 - c. offered an open statement, or no change was sought.
 - d. clearly supported the draft proposals.
 - e. was an alternate viewpoint received on the topic, but the recommendation of the draft plan was still considered the best option.
 - f. was based on incorrect information.
 - g. contributed options that are not possible (generally due to some aspect of existing legislation or government policy) or; involved details that are not appropriate or necessary for inclusion in a document aimed at providing a strategic community direction over the long term.

Submission	Do you support the proposed design for the plaza?	What are you most likely to use Young Street Plaza for?	What are you most likely to use Young Street Plaza for? (Other please specify))	What are the most important features Young St Plaza should have? (Other please specify))	Please provide your feedback on the proposed concept design option.	Additional comments/ Do you have any other suggestions about how Council can make this public space great?	Submission highlight and Council comments/ response	Recommended Plan to be amended Y or N	Reason
1	Part of it	Walking through	Seating, Gardens, Walkway, Shade /shelter, Greenery, Play zone, Communal seating	Seating, Gardens, Walkway, Shade /shelter, Greenery, Communal seating	It looks good. I am concerned about moving traffic right beside a children's play area. Clear safety/ separation is needed. I do think the access to Military Rd is welcome, however is tricky for residents if Grosvenor Lane.	I am concerned about safety in Grosvenor Lane, the raised part at the end should start further back. People do not stop at the stop sign. More needs to be done to slow traffic in Grosvenor Lane, it's dangerous	* Support for the plaza design noted. * Speed calming devices are included in the proposed road design to maintain low vehicle speeds. * Small walls and garden beds will act as buffers, separating the plaza from nearby traffic	N	2.B
2	Yes	Walking through	Seating, Gardens, Walkway, Shade /shelter, Greenery	Seating, Gardens, Walkway, Shade /shelter, Greenery	I like that traffic can be allowed to access Military Rd from Young St	No	* General support for the proposal noted.	N	2.D
3	No	Resting, Meeting up with others, Eating, Allowing the kids to play, Reading, Walking through	Seating, Gardens, Greenery, Cafe style seating	Seating, Gardens, Greenery, Communal seating	Proposing to introduce one-way car traffic in the plaza would undermine its pedestrian-friendly ambience. Instead of leisurely strolling and enjoying the space, pedestrians would contend with speeding cars, diminishing safety and the overall appeal of the area. Let's prioritize people over vehicles to maintain the plaza's charm and functionality	Promote pedestrian-friendly urban spaces. Prioritize foot traffic over cars. Reallocate parking for disabled access. Create vibrant, safe environments for all	* Opposition to road reopening * Road to be reopened due to existing Council resolution (Resolution 10.01 from 26 April 2022 Meeting https://www.northsydney.nsw.gov.au/ecm/download/document-9928007) * Speed calming devices are included in the proposed road design to maintain low vehicle speeds.	N	2.G
4	Part of it	Walking through	Walkway, Greenery, Communal seating	Walkway, Greenery, Communal seating	I feel the single lane should be a left turn from Military Rd to turn into Young Street, instead of the way proposed. This will provide added relief to Waters Road Ben Boyd and especially Grosvenor Lane. This would also not restrict traffic flow on Military Road in the same way the opposite direction will.		* Support for the plaza design noted. * Proposed direction of traffic enhances pedestrian safety and reduces rear-end collision risks on Military Road.	N	2.E
5	No	Meeting up with others, Walking through	Seating, Walkway, Greenery	Seating, Walkway, Greenery	As a pedestrian and a bus traveller, I do not support opening part of Young St onto Military Road. There are other options to access Military Road that could be explored first (Ben Boyd intersection - the bank up of traffic due to the left/right turns.	Outdoor eating	* Opposition to road reopening * Road to be reopened due to existing Council resolution (Resolution 10.01 from 26 April 2022 Meeting https://www.northsydney.nsw.gov.au/ecm/download/document-9928007)	N	2.G

Submission	Do you support the proposed design for the plaza?	What are you most likely to use Young Street Plaza for?	What are you most likely to use Young Street Plaza for? (Other please specify))	What are the most important features Young St Plaza should have? (Other please specify)	Please provide your feedback on the proposed concept design option.	Additional comments/ Do you have any other suggestions about how Council can make this public space great?	Submission highlight and Council comments/response	Recommended Plan to be amended Y or N	Reason
6	No	I am unlikely to use the plaza		Walkway	<p>The plaza is currently not used that much!!!! Opening Young Street in one direction for traffic to enter Military Road doesn't make sense. Traffic proceeds in this direction at the moment only to enter Woolworths car park it makes more sense for the road to be opened to allow traffic from Military Road. This would lessen the flow down Grosvenor Lane from Ben Boyd and be a more convenient access to the area for locals. As cars coming down Grosvenor Lane from Ben Boyd probably do so to access the Woolworths car park, this would make the need for left turn only proposed not as cumbersome for cars wanting to access the car park, which if they have to turn left, then have to go to Waters Lane.</p> <p>This project needs to be linked in the documents to the proposals concerning the rebuilding of the Woolworths site so that feedback can be relevant</p>	Return it to a two-way street!!!! n	<p>* No support for the proposal noted</p> <p>* Full road reopening requested – the proposal considers mixed community opinions on increasing open space and road access.</p>	N	2.E
7	Part of it	Walking through		Seating, Gardens, Walkway, Greenery	<p>I think the current design option is a reasonable solution that provides open, usable and attractive space for community space whilst looking to slightly improve traffic flow in the vicinity as well as supporting business on Young St with appropriate access (which is not provided for in the current temporary installation). I would take the following three comments:</p> <p>1. I am of the opinion that traffic flow in the opposite direction of the current plan ie south to north would better support local traffic movement particularly on Grosvenor Lane between Ben Boyd Rd and Young St.</p>	The lighting will make this area come alive and support the development of an area that is alive into the evening.	<p>* Support for the plaza design noted.</p> <p>* Road to be reopened to due to existing Council resolution (Resolution 10.01 from 26 April 2022 Meeting https://www.northsydney.nsw.gov.au/ecm/download/document-9928007)</p> <p>* Design suggestions will be considered during the detailed design stage.</p>	N	2.B 2.E

Submission	Do you support the proposed design for the plaza?	What are you most likely to use Young Street Plaza for?	What are you most likely to use Young Street Plaza for? (Other please specify)	What are the most important features Young St Plaza should have?	What are the most important features Young St Plaza should have? (Other please specify)	Please provide your feedback on the proposed concept design option.	Additional comments/ Do you have any other suggestions about how Council can make this public space great?	Submission highlight and Council comments/response	Recommend Plan to be amended Y or N	Reason
						<p>The Grosvenor Lane shared zone between Ben Boyd Rd and Young St isn't particularly successful in providing a safe area for pedestrians. The provision of safe pedestrian access on the West and East side of the Young St Plaza plans is excellent.</p> <p>2. I would encourage Council to ensure that the drainage provisions are capable of dealing with the water run off from Military Rd. It currently manages considerable run off from Military Road being the lowest point. I would also look to the current temporary plaza and May Gibbs Place as an example of drainage not being fit for purpose.</p> <p>3. Please ensure that appropriate and highly visible signage and other traffic measures are included at the intersection of Young St and Military Rd. Whilst I am supportive of vehicle access at this point I am aware that it is a pedestrian thorough-fare. If appropriate measures are not taken we will repeat the Grosvenor Lane Young St (Pet Barn) intersection where most cars simply ignore the Stop Sign and roll straight through with little care for pedestrians.</p>				

Submission	Do you support the proposed design for the plaza?	What are you most likely to use Young Street Plaza for?	What are you most likely to use Young Street Plaza for? (Other please specify))	What are the most important features Young St Plaza should have? (Other please specify)	Please provide your feedback on the proposed concept design option.	Additional comments/ Do you have any other suggestions about how Council can make this public space great?	Submission highlight and Council comments/response	Recommended Plan to be amended Y or N	Reason	
8	Part of it	Resting, Meeting up with others, Eating, Allowing the kids to play, Reading, Walking through		Seating, Gardens, Shade /shelter, Greenery, Play zone, Cafe style seating, Communal seating	<p>1. Shading and Rain Protection: is critical to maximise the use of the space with climate change. Small trees won't suffice. The pop up suffered from a lack of use during 3 years of rain and covid. However, as a Sutherland Lane local, it's great to see kids and parents using it after school and playing on the "green" and using the rotting wooden seat/tables for breakfast, lunch or a coffee after exercising (gym or cycle). This doesn't occur in extreme heat or inclement weather - both of which are increasing. So, consider a two level architectural solution.</p> <p>2. Sound and Dirt Barrier: The shipping container provides a critical sound and dirt barrier from Military Road. Just compare the noise sitting in the pop up with the noise sitting in the cafes in Cremorne Plaza. We don't eat outside there because the noise and dirt (road grit) is unbearable. It could use a barrier. The same with the horrible and exposed "Tex Mex" Plaza design across the road in May Gibbs Place. It isn't used by locals. The amount of traffic noise on Military Rd is similar to the freeway, especially with busses, trucks and tradies. Consider a perspex or other sound barrier that lets light through but blocks noise and dirt. Concrete is overkill.</p> <p>3. No thoroughfare: We used to use Young St as a road turnoff in preference to Ben Boyd Rd all the time before it was closed. We don't miss it. I am an older driver of sports cars & SUVs, a regular Cammeray Roadies cyclist, a runner and a local who frequents and supports local businesses. Mixed use is dangerous particularly with pre-schoolers and cars. Having cafes, preschools and community use, like Grosvenor Lane's Enoteca 128, Bourke St Bakery and Against</p>	<p>In general agreement but Shading and Rain Protection, Sound and Dirt Barriers and no cars should be added. Trees and greenery are important: A non slippery surface is essential. Even if astrotrurf as in the pop up. Also defined large flat tires work best for seating and eating. I wish the pavement on Grosvenor St had flat tiers of seeing outside cafes like Loaves and Fishes etc so you don't have to eat on a lean. if it can be done in Crows Nest - Willoughby Rd please design it here. Rather than criss cross with sloping paths for disabled access that wastes space, rather design that linearly.</p>	<p>Keep existing big trees. Use a storied structure for street level sun/rain/wind shelter and tier 2 play/umbrella shading. Ensure the north facing aspect allows light through and Military Rd noise is blocked by a solid transparent barrier. Add NE wind baffle</p>	<p>* General support for the proposal noted. * Road to be reopened to due to existing Council resolution (Resolution 10.01 from 26 April 2022 Meeting https://www.northsydney.nsw.gov.au/ecm/download/document-9928007) * Design suggestions will be considered during the detailed design stage.</p>	N	2.E 2.G

Submission	Do you support the proposed design for the plaza?	What are you most likely to use Young Street Plaza for?	What are you most likely to use Young Street Plaza for? (Other (please specify))	What are the most important features Young St Plaza should have?	What are the most important features Young St Plaza should have? (Other (please specify))	Please provide your feedback on the proposed concept design option.	Additional comments/ Do you have any other suggestions about how Council can make this public space great?	Submission highlight and Council comments/response	Recommended Plan to be amended Y or N	Reason
9	Part of it	Resting, Walking through		Gardens, Walkway, Greenery	The Grind, amongst others, needs space for people not cars.	Generally, I support the concept design but would like no road / traffic to be allowed at the plaza. I would like it to remain a walking zone only, with no vehicles passing through onto Military Rd. I would like the Plaza to have as much greenery and gardens as physically possible, without making yet another cafe out of the zone.	As north side of Military Rd is very much a concrete jungle, I would like more greenery (tall leafy trees) planted and gardens set up in the area. No need for more roads, cycleways, cafes or human beehives.	* Road to be reopened due to existing Council resolution (Resolution 10.01 from 26 April 2022 Meeting https://www.northsydney.nsw.gov.au/ecm/download/document-9928007)	N	2.G

Submission	Do you support the proposed design for the plaza?	What are you most likely to use Young Street Plaza for?	What are you most likely to use Young Street Plaza for? (Please specify)	What are the most important features Young St Plaza should have? (Other please specify)	What are the most important features Young St Plaza should have?	What are the most important features Young St Plaza should have? (please specify)	Please provide your feedback on the proposed concept design option.	Additional comments/ Do you have any other suggestions about how Council can make this public space great?	Submission highlight and Council comments/response	Recommended Plan to be amended Y or N	Reason
10	Part of it	Meeting up with others, Allowing the kids to play			Shade /shelter, Play zone	<p>The existing plaza has a large play area that is covered in artificial turf. This is a very good surface for small children to play on. Particularly those who are still crawling and learning to walk. Naturally grass and or hard surfaces are not ideal</p> <p>The two waves in the existing plaza are excellent for children to practice balance</p> <p>In short the existing setup is very useful for families to chat while very small children and babies can crawl and play.</p> <p>There are plenty of other swing and equipment parks close by for older kids</p> <p>It would be a shame to lose this unique play area that works really well for very small children and babies to play on</p>	<p>Please retain the artificial grass and don't put in play equipment as there's plenty of other parks that do that</p>	<p>* General support for the proposal noted.</p> <p>* Design suggestions will be considered during the detailed design stage.</p>	N	2.B 2.D	
11	Part of it	Resting, Meeting up with others, Eating, Allowing the kids to play, Reading, Walking through			Seating, Gardens, Greenery, Play zone, Cafe style seating	Should remain closed to traffic			<p>* Road to be reopened to due to existing Council resolution (Resolution 10.01 from 26 April 2022 Meeting https://www.northsydney.nsw.gov.au/ecm/download/document-9928007)</p>	N	2.G
12	Part of it	Walking through			Seating, Gardens, Walkway, Shade /shelter, Greenery, Cafe style seating, Communal seating	Why do we need a play zone? Also, I disagree that you should only be able to turn left from Grosvenor Lane onto Young Street, this will cause more congestion on other roads. You should continue to be able to turn left or right.		<p>* General support for the proposal noted.</p> <p>* Design suggestions will be considered during the detailed design stage.</p>	N	2.E	

Submission	Do you support the proposed design for the plaza?	What are you most likely to use Young Street Plaza for?	What are you most likely to use Young Street Plaza for? (Other (please specify))	What are the most important features Young St Plaza should have? (Other (please specify))	Please provide your feedback on the proposed concept design option.	Additional comments/ Do you have any other suggestions about how Council can make this public space great?	Submission highlight and Council comments/response	Recommended Y or N	Reason
13	Yes	Resting, Walking through	Cycling through	Seating, Gardens, Walkway, Shade /shelter, Greenery, Communal seating	Good, less reliance on cars and parking		* General support for the proposal noted.	N	2.D
14	Yes	Allowing the kids to play, Walking through		Gardens, Walkway, Greenery	I am concerned the allowing traffic to turn from Young Street on to Military Road will make the area unsafe for pedestrians and cyclists, particularly if there is not a very low speed limit. Query whether it may also disrupt the traffic flow on Military Road given how proximate it is to the bus station.	It would be nice to have some trees that block the noise from Military Road and bike racks please.	* General support for the proposal noted. * Design suggestions will be considered during the detailed design stage. * Speed calming devices are included in the proposed road design to maintain low vehicle speeds.	N	2.B 2.D
15	Part of it	Walking through, I am unlikely to use the plaza		Gardens, Shade /shelter, Greenery	Please no plane trees. For a current example of good open space design look at the Victoria park development at Green Square, which has eucalypts and native grasses. https://www.hassellstudio.com/conversion/the-15-percent-difference	Look at current best practice for urban open space and aim to make something special.	* General support for the proposal noted. * Design suggestions will be considered during the detailed design stage.	N	2.B 2.D
16	Yes	Walking through		Seating, Gardens, Walkway, Greenery	modern and spacious, don't fill it up with coloured plastic equipment.	make it look different to the awful mess that it currently is. trees and plants and bench seating in a classic style.	* General support for the proposal noted. * Design suggestions will be considered during the detailed design stage.	N	2.B 2.D
17	Part of it	Walking through		Seating, Gardens, Greenery, Cafe style seating	I like the design but think it should be moved to between Grosvenor St and Grosvenor Lane (where cafes and restaurants are adjacent) and fully reopen between Grosvenor Lane and Military Rd to traffic. This way the space will be better utilised by people instead of becoming a dead and dreary space similar to what is there now.	As above	* General support for the design proposal noted. * Suggestions to relocate the site noted - outside the scope of this project	N	2.D 2.G
18	No	Walking through		Walkway	Wish it was just a normal street once more. This design is scaled badly.	Make it a normal road again.	* No support for the proposal noted * Full road reopening requested – the proposal considers mixed community opinions on increasing open space and road access.	N	2.E

Submission	Do you support the proposed design for the plaza?	What are you most likely to use Young Street Plaza for?	What are you most likely to use Young Street Plaza for? (Other please specify))	What are the most important features Young St Plaza should have?	What are the most important features Young St Plaza should have? (Other please specify))	Please provide your feedback on the proposed concept design option.	Additional comments/ Do you have any other suggestions about how Council can make this public space great?	Submission highlight and Council comments/ response	Recommended Plan to be amended Y or N	Reason
19	Part of it	Meeting up with others, Reading, Walking through	Seating, Gardens, Walkway, Play equipment, Shade /shelter, Greenery, Play zone, Cafe style seating, Communal seating	My sole comment is related to traffic. There are plenty of ways for vehicles to access Military Road because send them through the Plaza. It's bad idea. It adversely affects the amenity and it puts kids playing in danger.	No			* Support to general proposal. * Opposition to road reopening * Road to be reopened to due to existing Council resolution (Resolution 10.01 from 26 April 2022 Meeting https://www.northsydney.nsw.gov.au/ecm/download/document-9928007)	N	2.D 2.G
20	Yes	Walking through	Car access to Military Rd. Path to Pedestrian Crossing	OK				* General support for the proposal noted. * Design suggestions will be considered during the detailed design stage.	N	2.B 2.D
21	Yes	Walking through	Gardens, Walkway, Shade /shelter, Greenery, Cafe style seating	More greenery and lighting in the evenings please	Evening lighting so it is safe			* General support for the proposal noted. * Design suggestions will be considered during the detailed design stage.	N	2.B 2.D
22	Part of it	Resting, Eating, Allowing the kids to play, Walking through	Shade /shelter, Greenery, Play zone, Cafe style seating, Communal seating	I like except the partial reopening of Young St at Military Road. I like that you can use the plaza with no concerns about cars.				* Support to general proposal. * Opposition to road reopening * Road to be reopened to due to existing Council resolution (Resolution 10.01 from 26 April 2022 Meeting https://www.northsydney.nsw.gov.au/ecm/download/document-9928007)	N	2.D 2.G
23	Part of it	Resting, Meeting up with others, Eating, Walking through	Seating, Gardens, Walkway, Shade /shelter, Greenery	Please keep the Young St mall closed to all traffic. Reopening it to any traffic, even in one direction, will add to congestion in and around Military Road.				* Support to general proposal. * Opposition to road reopening * Road to be reopened to due to existing Council resolution (Resolution 10.01 from 26 April 2022 Meeting https://www.northsydney.nsw.gov.au/ecm/download/document-9928007)	N	2.D 2.G
24	Part of it	Meeting up with others, Eating, Allowing the kids to play, Walking through	Seating, Gardens, Walkway, Play equipment, Shade /shelter, Greenery, Play zone,	I utterly reject that cars will be allowed to exit via Young Street. How could this be possibly safe with a children's playground and pedestrians crossing Young Street to get to the bus stop. Also having traffic merging onto Military Road in the bus lane in front of	Yes, don't allow cars in this area. Allow it be pedestrian and child safe. This allows people to sit and supervise children, eat and meet up with friends. NO CARS ALLOWED.			* Support to general proposal. * Opposition to road reopening * Road to be reopened to due to existing Council resolution (Resolution 10.01 from 26 April 2022 Meeting https://www.northsydney.nsw.gov.au/ecm/download/document-9928007)	N	2.D 2.G

Submission	Do you support the proposed design for the plaza?	What are you most likely to use Young Street Plaza for?	What are you most likely to use Young Street Plaza for? (Other (please specify))	What are the most important features Young St Plaza should have? (Other (please specify))	Please provide your feedback on the proposed concept design option.	Additional comments/ Do you have any other suggestions about how Council can make this public space great?	Submission highlight and Council comments/response	Recommended Plan to be amended Y or N	Reason
25	Part of it	Meeting up with others		Seating, Gardens, Walkway, Play equipment, Shade /shelter, Greenery, Play zone, Cafe style seating, Communal seating	cars and buses just before the bus stop is an accident waiting to happen. Young Street, should not be open to cars full stop. Military Road has altered traffic lanes during peak hours which will also cause havoc with cars pulling into Military Road. I fully support the proposal but have two issues: Item 9 (Left had turn only out of Grosvenor Lane), I do not believe that the traffic guide forcing cars to turn left is large enough and that a number of drivers will ignore and turn right anyway (Also most likely to be the drivers to speed down the lane way). Please make very difficult to turn right. Item 1 The access through to Military Road, believe current arrangement would be best having a dedicated walkway/cycleway but not cars. Cars coming out of the parking space could be forced to turn right into Grosvenor Lane towards the Supermarket car park. It there was no road access through to Military Road a more comprehensive screen/fencing to Military Road could be installed.	Better barrier for sound on Military Road	* Support to general proposal. * Opposition to road reopening * Road to be reopened to due to existing Council resolution (Resolution 10.01 from 26 April 2022 Meeting https://www.northsydney.nsw.gov.au/ecom/download/document-9928007) * Design suggestions will be considered during the detailed design stage.	N	2.D 2.G
26	Part of it	Resting, Meeting up with others, Eating, Allowing the kids to play, Reading, Walking through		Seating, Gardens, Walkway, Play equipment, Shade /shelter, Greenery, Play zone, Cafe style seating, Communal seating	Why does there need to be any through traffic in this lane? There are 2 intersections 200m east and west of this junction. Is it really that much to ask cars to spend an extra 30 seconds to get to either one of these locations? It doesn't add a value or amenity for the area. vehicular through traffic should remain excluded from this space!	No through car movement!	* Opposition to road reopening * Road to be reopened to due to existing Council resolution (Resolution 10.01 from 26 April 2022 Meeting https://www.northsydney.nsw.gov.au/ecom/download/document-9928007)	N	2.G

Submission	Do you support the proposed design for the plaza?	What are you most likely to use Young Street Plaza for?	What are you most likely to use Young Street Plaza for? (Other please specify)	What are the most important features Young St Plaza should have? (please specify)	Please provide your feedback on the proposed concept design option.	Additional comments/ Do you have any other suggestions about how Council can make this public space great?	Submission highlight and Council comments/response	Recommended Plan to be amended Y or N	Reason
27	No	Eating, Allowing the kids to play, Walking through		Seating, Gardens, Walkway, Shade /shelter, Greenery, Play zone, Communal seating	By design option do you mean opening the road to traffic? Terrible idea.	By not reopening the road to cars	* Opposition to road reopening * Road to be reopened due to existing Council resolution (Resolution 10.01 from 26 April 2022 Meeting https://www.northsydney.nsw.gov.au/ecm/download/document-9928007)	N	2.G
28	Part of it	Meeting up with others, Eating, Walking through		Gardens, Shade /shelter, Greenery, Communal seating	The overall design is quite good, but the proposed one-way car-lane should be removed. It's inclusion is counter-intuitive to the plaza's entire concept as it introduces a serious element of danger to pedestrians expecting a car-free "quiet space" and small children playing in the area. Removing this lane will provide significant additional space for seating and greenery in the form of plants and/or trees. Moreso, when Young St was previously completely open to two-way traffic I personally witnessed numerous occasions when vehicles exiting onto Military Road would cause near-accidents with oncoming traffic having to stop or slow suddenly. Completely suitable alternatives for traffic to join Military Road are available nearby at Ben Boyd Road and Rangers Road.	Instead of the one-way lane a single parking space for a food truck/coffee van would be a welcome addition. The food-type of truck could be rotated on a regular basis / schedule to provide a suitable variety each week.	* Support to general proposal. * Opposition to road reopening * Road to be reopened due to existing Council resolution (Resolution 10.01 from 26 April 2022 Meeting https://www.northsydney.nsw.gov.au/ecm/download/document-9928007)	N	2.D 2.G
29	Part of it	Meeting up with others, Allowing the kids to play, Walking through	Cycling through.	Play equipment, Play zone	It's good. But the connections to surrounding areas needs to be considered. Dedicated cycleways are a must	The whole suburb needs dedicated cycleways	* Support to general proposal. * Request for bike connectivity – future bike lanes subject to separate consultation.	N	2.D

Submission	Do you support the proposed design for the plaza?	What are you most likely to use Young Street Plaza for?	What are you most likely to use Young Street Plaza for? (Please specify)	What are the most important features Young St Plaza should have? (please specify)	Please provide your feedback on the proposed concept design option.	Additional comments/ Do you have any other suggestions about how Council can make this public space great?	Submission highlight and Council comments/response	Recommended Plan to be amended Y or N	Reason
30	Yes	Meeting up with others, Allowing the kids to play, Walking through	Seating, Gardens, Walkway, Play equipment, Greenery, Play zone	What are the most important features Young St Plaza should have? (please specify)	Very pleased this area of Young Street will be upgraded to a permanent public space. It has been neglected for a long time and the creative new design is very welcomed.	Seamless integration into the streetscape would be very inviting and of benefit to cafes and shop owners. Please do not build any more cycle ways in the Neutral Bay and Cremorne area. The Council has taken road space away from drivers and changed roundabouts to Give way and Stop signs which have caused hazardous consequences. Driver right of way is confusing and in particular the Young Street and Grasmere Road intersection has regular near misses and constant horns beeping. The cycle ways are largely UNUSED by cyclists, the odd one or two use them on weekends, sometimes. The Council has introduced narrow road access for vehicles and narrow cycle ways for cyclists which are difficult to navigate and too narrow for cyclists to benefit from using. Instead the cyclists ride side by side on the roads, ignoring the cycle ways	* General support for the proposal noted. * Opposition to cycle paths noted - future bike lanes subject to separate consultation.	N	2.A 2.D
31	Part of it	Meeting up with others, Eating, Walking through	Seating, Gardens, Walkway, Shade /shelter, Greenery, Cafe style seating, Communal seating	What are the most important features Young St Plaza should have? (please specify)	It looks great but I am concerned about opening up a section to traffic. What is the justification for this and is it really necessary, especially when this is being designed for a community space? I feel the addition of traffic is unnecessary and poses a potential risk to pedestrians and children playing in the space.	Please reconsider the need for traffic in the space, and also, please please, no more London Plane trees!	* Support to general proposal. * Opposition to road reopening * Road to be reopened due to existing Council resolution (Resolution 10.01 from 26 April 2022 Meeting https://www.northsydney.nsw.gov.au/ecm/download/document-9928007)	N	2.D 2.G
32	No	Resting, Walking through	Seating, Gardens, Shade /shelter, Greenery	What are the most important features Young St Plaza should have? (please specify)	The road should not be reopened to traffic. The road was really unsafe for pedestrians previously, the used to fly around the corner and it was hard to see what was coming. Closing it off to cars has been fantastic and I now feel very safe around that area. if you allow	By removing cars. The road reminds me a lot of Spring St in Chatswood, that has also seen fantastic benefits to the shopping strip when it was closed off to cars.	* Opposition to road reopening * Road to be reopened due to existing Council resolution (Resolution 10.01 from 26 April 2022 Meeting https://www.northsydney.nsw.gov.au/ecm/download/document-9928007)	N	2.G

Submission	Do you support the proposed design for the plaza?	What are you most likely to use Young Street Plaza for?	What are you most likely to use Young Street Plaza for? (Other please specify))	What are the most important features Young St Plaza should have?	What are the most important features Young St Plaza should have? (please specify)	Please provide your feedback on the proposed concept design option.	Additional comments/ Do you have any other suggestions about how Council can make this public space great?	Submission highlight and Council comments/response	Recommended Plan to be amended Y or N	Reason
33	Yes	Walking through		Seating, Gardens, Walkway, Shade /shelter, Greenery, Cafe style seating, Communal seating		cars the traffic lights should be moved to integrate that road too. I saw the questions about grosvenor lane, that is so poorly designed for pedestrians. It should have a footpath for pedestrians. I often navigate these streets with a pram. Think its pretty good given space. If the emphasis is on a space for locals to rest, gather, eat, commune then the majority of the space, apart from access, should be for this purpose. Don't think a children's play area is approp for this space. Its not that big and could result in the old Lane Cove Plaza vibe where the kids ran wild while the parents communed. There are local parks for children's play		* Road to be reopened to due to existing Council resolution (Resolution 10.01 from 26 April 2022 Meeting https://www.northsydney.nsw.gov.au/ecm/download/document-9928007)	N	2.B 2.D
34	No	I am unlikely to use the plaza				The concept design overstates the available space. The street needs to be reopened to cars again. Reopening the street to cars will hopefully remove the congestion caused on Ben Boyd Road. The current site is a disaster. The shipping container hasn't been open in years, the cheap plywood fittings are falling apart and the seating areas are dirty. The only people using are children running around, so there may as well be a playground built for them. The design needs to open up the shopfront area. I also OPPOSE making Grosvenor lane left turn only, as the only access to my apartment's garage is via Cooper lane, and this rule would cut off access to my home completely. I always drive straight from Grosvenor lane, across Young St, then turn left into Cooper Ln.		* No support for the proposal noted * Full road reopening requested – the proposal considers mixed community opinions on increasing open space and road access.	N	2.E
35	Yes	I am unlikely to use the plaza		Seating, Play equipment, Greenery			Make it clean	* General support for the plaza upgrade * Opposition to Grosvenor Lane left turn only proposal - alternate routes via Grosvenor Street available to access Cooper Lane.	N	2.E

Submission	Do you support the proposed design for the plaza?	What are you most likely to use Young Street Plaza for?	What are you most likely to use Young Street Plaza for? (Other (please specify))	What are the most important features Young St Plaza should have? (please specify)	Please provide your feedback on the proposed concept design option.	Additional comments/ Do you have any other suggestions about how Council can make this public space great?	Submission highlight and Council comments/ response	Recommended Plan to be amended Y or N	Reason
36	Part of it	Resting, Meeting up with others, Walking through	Seating, Gardens, Shade /shelter, Greenery, Cafe style seating	What are the most important features Young St Plaza should have?	I hope that it will remain pedestrian-only, and the drive through Military Road will not be reinstated. I think having it be a car free area has really helped with the pedestrian-safe feeling of the area, where I see children running around, and I think the added value of cars going through to Military Road vs a different route isn't worth it	Herb or otherwise aromatic plants to make the area smell good	* Support to general proposal. * Opposition to road reopening * Road to be reopened to due to existing Council resolution (Resolution 10.01 from 26 April 2022 Meeting https://www.northsydney.nsw.gov.au/ecm/download/document-9928007) * Small walls and garden beds will act as buffers, separating the plaza from nearby traffic	N	2.D 2.G
37	No	Resting, Allowing the kids to play, Walking through	Walkway, Play zone, Communal seating	Walkway, Play zone, Communal seating	Cars access should be dropped from the plan. Cars take up too much room and pose a safety threat for kids and other pedestrians.	Cars can't use the temporary set up at the moment, why bring car fumes, congestion and danger to pedestrians back?	* Opposition to road reopening * Road to be reopened to due to existing Council resolution (Resolution 10.01 from 26 April 2022 Meeting https://www.northsydney.nsw.gov.au/ecm/download/document-9928007)	N	2.G
38	Part of it	Meeting up with others, Allowing the kids to play, Walking through	Gardens, Walkway, Play equipment, Shade /shelter, Communal seating	Gardens, Walkway, Play equipment, Shade /shelter, Communal seating	I would not open traffic through to Military Road.		* Support to general proposal. * Opposition to road reopening * Road to be reopened to due to existing Council resolution (Resolution 10.01 from 26 April 2022 Meeting https://www.northsydney.nsw.gov.au/ecm/download/document-9928007)	N	2.D 2.G
39	Yes	Meeting up with others, Walking through	Seating, Gardens, Walkway, Greenery, Cafe style seating, Communal seating	Seating, Gardens, Walkway, Greenery, Cafe style seating, Communal seating	I love it. Looks great. Quality. Only objection is the one way road. Would remove that so no access to military road	No	* General support for the proposal noted. * Road to be reopened to due to existing Council resolution (Resolution 10.01 from 26 April 2022 Meeting https://www.northsydney.nsw.gov.au/ecm/download/document-9928007)	N	2.D 2.G
40	No		Open to traffic	Open to traffic	Most of the local traffic will be travelling to/from the Bridge//Westwards and returning. it would be more useful if returning traffic could exit military road down into Young Street.		* No support for the proposal noted * Proposed direction of traffic enhances pedestrian safety and reduces rear-end collision risks on Military Road.	N	2.E

Submission	Do you support the proposed design for the plaza?	What are you most likely to use Young Street Plaza for?	What are you most likely to use Young Street Plaza for? (Other please specify))	What are the most important features Young St Plaza should have? (Other please specify))	Please provide your feedback on the proposed concept design option.	Additional comments/ Do you have any other suggestions about how Council can make this public space great?	Submission highlight and Council comments/ response	Recommended Plan to be amended Y or N	Reason
41	No	Resting, Meeting up with others, Allowing the kids to play, Reading, Walking through	Seating, Walkway, Shade /shelter, Play zone, Cafe style seating	What are the most important features Young St Plaza should have? (Other please specify))	No way it should be open to traffic	No cars	* Opposition to road reopening * Road to be reopened due to existing Council resolution (Resolution 10.01 from 26 April 2022 Meeting https://www.northsydney.nsw.gov.au/ecm/download/document-9928007)	N	2.G
42	Part of it	Eating, Allowing the kids to play, Walking through	Gardens, Walkway, Shade /shelter	Gardens, Walkway, Shade /shelter	I would prefer no motor vehicle access as cars do not stick to the speed limit and I feel unsafe as a pedestrian		* Opposition to road reopening * Road to be reopened due to existing Council resolution (Resolution 10.01 from 26 April 2022 Meeting https://www.northsydney.nsw.gov.au/ecm/download/document-9928007)	N	2.G
43	Part of it	Walking through	Seating, Gardens, Walkway, Shade /shelter, Greenery, Play zone, Cafe style seating, Communal seating	Seating, Gardens, Walkway, Shade /shelter, Greenery, Play zone, Cafe style seating, Communal seating	Introducing cars where you want people to sit and socialise and children to play is unsafe. More green space and less cars!	Yes by not opening Young St to access Military Rd Please do not open Young st to traffic. Access to Military Rd works fine how it is!! Less car traffic the better and safer.	* Opposition to road reopening * Road to be reopened due to existing Council resolution (Resolution 10.01 from 26 April 2022 Meeting https://www.northsydney.nsw.gov.au/ecm/download/document-9928007)	N	2.G
44	Yes	Resting, Meeting up with others, Eating, Walking through	Seating, Gardens, Shade /shelter, Cafe style seating	Seating, Gardens, Shade /shelter, Cafe style seating	Covered seating very important. Biggest current problem is dealing with leaves from the trees above. Rarely cleaned and always looks messy. What are plans to deal with this with the new design?		* General support for the proposal noted. * Maintenance concerns will be addressed during the detailed design stage * Design suggestions will be considered during the detailed design stage.	N	2.B 2.D
45	Part of it	Eating, Allowing the kids to play, Walking through	Seating, Gardens, Shade /shelter, Greenery, Cafe style seating, Communal seating	Seating, Gardens, Shade /shelter, Greenery, Cafe style seating, Communal seating	Either it's fully open to cars or not at all. Crazy to have what will basically be a playground with cars driving next to it. No question it will have a lot of traffic. This is stupidly dangerous. Look at the "shared" street of Grosvenor Lane. So stupid. People have to walk in the road and it is so busy with cars due to Young St being closed. Just get rid of the Young St plaza and reopen to traffic to make Grosvenor Lane quieter.	Not have traffic driving through the middle of it.	* Speed calming devices are included in the proposed road design to maintain low vehicle speeds. * Small walls and garden beds will act as buffers, separating the plaza from nearby traffic * The proposal considers mixed community opinions on increasing open space and road access.	N	2.B

Submission	Do you support the proposed design for the plaza?	What are you most likely to use Young Street Plaza for?	What are you most likely to use Young Street Plaza for? (Other (please specify))	What are the most important features Young St Plaza should have? (please specify)	Please provide your feedback on the proposed concept design option.	Additional comments/ Do you have any other suggestions about how Council can make this public space great?	Submission highlight and Council comments/response	Recommended Plan to be amended Y or N	Reason
46	Yes	Walking through		Seating, Gardens, Walkway, Shade /shelter, Greenery, Communal seating	no	Fencing to ensure pedestrians are safe from cars	* General support for the proposal noted.	N	2.D
47	No	I am unlikely to use the plaza		Accommodation (as before) for traffic to exit Military Road.	I reject it because it does not provide accommodation (as before) for traffic to exit Military Road.	Lobby State Government to obtain permission to restore accommodation for traffic to exit Military Road at Young Street.	* No support for the proposal noted * Submitter requested full road reopening – the proposal considers mixed community opinions on increasing open space and road access.	N	2.E
48	Yes	Meeting up with others, Eating, Walking through		Seating, Gardens, Walkway, Play equipment, Shade /shelter, Greenery, Play zone, Cafe style seating, Communal seating	The greener the better! Something fun for kids. The love the current hills. I see them running up and rolling day every day.	Close more streets and make greener spaces. These areas should be pedestrian only. If they can manage in George st, we can manage it in the side streets of Neutral Bay. Neutral bay needs more community spaces. I watch young families and workers continue to use this space, even in this dilapidated form. I support more green spaces and greater communal areas for workers and young families to enjoy as part of the community. This only adds to the vibrant fabric of the shopping village that is current surrounded by car parks!	* General support for the proposal noted.	N	2.D

Submission	Do you support the proposed design for the plaza?	What are you most likely to use Young Street Plaza for?	What are you most likely to use Young Street Plaza for? (Other please specify)	What are the most important features Young St Plaza should have?	What are the most important features Young St Plaza should have? (Other please specify)	Please provide your feedback on the proposed concept design option.	Additional comments/ Do you have any other suggestions about how Council can make this public space great?	Submission highlight and Council comments/response	Recommended Plan to be amended Y or N	Reason	
49	Part of it	Meeting up with others, Eating, Allowing the kids to play, Walking through		Seating, Gardens, Walkway, Play equipment, Shade /shelter, Greenery, Play zone		<p>The proposal from what I understand makes best use of the area if traffic was to be re-introduced to Young St with southbound traffic being able to turn left onto Military Rd. It will be hard to ascertain how much traffic this single lane will carry and how it interacts with the majority of the plaza. On current traffic patterns especially in peak hour with the bus lane on Military Rd operating, these cars will find it difficult to gain entry to Military Rd, but also concede this may help residents north of Military Rd.</p> <p>The plaza should form part of the overall proposed and much need pedestrian only plaza in Neutral Bay town centre, in both form and function for an integrated area for residents.</p> <p>It is imperative and of utmost importance that the left turn only from Grosvenor Lane is not only policed accordingly but the road design/hardware as indicated in the plan makes it impossible to even attempt or make a right hand turn or to go straight. This is crucial in not turning Grosvenor Lane into a 'rat run', but also improving much needed pedestrian safety.</p> <p>As part of the Young St plaza upgrade, would also suggest that Grosvenor Lane, apart from the measures discussed above, has a redesign and has the relevant funds made available to make it more pedestrian friendly rather than dangerous environment that exists with pedestrians being funneled into front of speeding vehicles. Would note that the current</p>			* Road to be reopened due to existing Council resolution (Resolution 10.01 from 26 April 2022 Meeting https://www.northsydney.nsw.gov.au/ecm/download/document-9928007) * Design suggestions will be considered during the detailed design stage.	N	2.B 2.E

Submission	Do you support the proposed design for the plaza?	What are you most likely to use Young Street Plaza for?	What are you most likely to use Young Street Plaza for? (Other (please specify))	What are the most important features Young St Plaza should have?	What are the most important features Young St Plaza should have? (please specify)	Please provide your feedback on the proposed concept design option.	Additional comments/ Do you have any other suggestions about how Council can make this public space great?	Submission highlight and Council comments/response	Recommended Plan to be amended Y or N	Reason
50	Yes	Resting, Eating, Allowing the kids to play, Walking through		Seating, Play equipment, Shade /shelter, Greenery, Play zone		design makes it literally impossible than anyone with a mobility aid, or parents with prams, cannot safely access the laneway or walk up or down the laneway.		* General support for the proposal noted. * Design suggestions will be considered during the detailed design stage.	N	2.B 2.D
51	Part of it	Resting, Eating, Reading, Walking through		Seating, Gardens, Walkway, Shade /shelter, Greenery, Cafe style seating, Communal seating		Mixed use concept looks good, I currently play with my son at the Plaza frequently and he really enjoys the astroturf, I think it's a clever way to soften the space for children playing I have never believed cars should be going through there. I'd love to see Neutral Bay Village (and especially this parklet and Grosvenor Lane) totally free of cars. Wouldn't it be amazing to have a super cool village with small bars and cafes and third spaces that would be the envy of Sydney? This should never have been closed to both ways vehicular traffic. For years we have had to endure a totally useless, unused, thoroughfare. It has been an eyesore and nothing more than a rubbish dump. An appalling, shabby, disgraceful part of Neutral Bay.	PLEASE remove all the cars.	* Opposition to road reopening * Road to be reopened to due to existing Council resolution (Resolution 10.01 from 26 April 2022 Meeting https://www.northsydney.nsw.gov.au/ecm/download/document-9928007)	N	2.G
52	No	I am unlikely to use the plaza		Re-introduction of traffic both ways into, and from, Military Road.			It is totally unacceptable that Council has wilfully allowed this eyesore to fester for years - a shocking waste of our money.	* No support for the proposal noted * Full road reopening requested – the proposal considers mixed community opinions on increasing open space and road access.	N	2.E

Submission	Do you support the proposed design for the plaza?	What are you most likely to use Young Street Plaza for?	What are you most likely to use Young Street Plaza for? (Other (please specify))	What are the most important features Young St Plaza should have?	What are the most important features Young St Plaza should have? (Other (please specify))	Please provide your feedback on the proposed concept design option.	Additional comments/ Do you have any other suggestions about how Council can make this public space great?	Submission highlight and Council comments/response	Recommended Plan to be amended Y or N	Reason
53	No	What are you most likely to use Young Street Plaza for?	There is no need for a Plaza, the open Council car park is a 24 hour above ground asset. People can park in a well lit area. Most people who use this car park come from elsewhere. Shop on their way home, use all the services. Including Woolworths customers.	What are the most important features Young St Plaza should have?	What are the most important features Young St Plaza should have? (Other (please specify))	And transparently a shocking waste of rate payers' money. I would like to oppose the opening of Young Street allowing traffic to flow into Military Rd. It will cause traffic chaos. It will also mean the loss of a small, safe play area for the local children. There is no other area for children to play. It will mean the removal of several mature overhanging trees that dampen the sounds of the traffic. These trees provide health benefits helping to clean the air & providing habitat for birds. Their loss will be detrimental to the area. The local cafes will also be affected. There will be nowhere for their customers to sit or park. There will be nowhere for them to receive deliveries. Traffic turning out of Young Street onto Military Rd would have to turn into the middle lane because there is parking in the kerbside lane on Military Rd all the way to the Spit from 10am. There is a pedestrian only crossing with lights across Military Rd which stops traffic & currently buses are queuing for the bus stop passed Young Street & back over this pedestrian crossing. With Young Street opening the queue of buses will get worse backing up the middle lane. Opening Young Street into Military Rd will also require a pedestrian island or lights for people to cross Young Street to catch the bus. This too will affect the flow of traffic.		* Mixed opinions noted * Speed calming devices are included in the proposed road design to maintain low vehicle speeds. * Road to be reopened due to existing Council resolution (Resolution 10.01 from 26 April 2022 Meeting https://www.northsydney.nsw.gov.au/ecm/download/document-9928007)	N	2.B 2.G

Submission	Do you support the proposed design for the plaza?	What are you most likely to use Young Street Plaza for?	What are you most likely to use Young Street Plaza for? (Other please specify))	What are the most important features Young St Plaza should have?	What are the most important features Young St Plaza should have? (Other please specify))	Please provide your feedback on the proposed concept design option.	Additional comments/ Do you have any other suggestions about how Council can make this public space great?	Submission highlight and Council comments/response	Recommended Plan to be amended Y or N	Reason
54	Yes	Eating, Walking through		Seating, Gardens, Walkway, Shade /shelter, Greenery, Cafe style seating		Seems to be a good balance, just need to ensure that the shaded areas are over dining tables as currently they are unusable in we weather. It would be good to screen off military rd as much as possible to provide a visual barrier. It may be good to add curve/chicane to the road section to slow down traffic without the noise of speed bumps.		* General support for the proposal noted. * Design suggestions will be considered during the detailed design stage. * Speed calming devices are included in the proposed road design to maintain low vehicle speeds.	N	2.B 2.D
55	Part of it	Resting, Eating, Walking through		Seating, Gardens, Walkway, Shade /shelter, Greenery, Cafe style seating, Communal seating		The idea/concept sounds good but surely the street is not wide enough to adequately support the full design with cars in the mix. however this saga needs to end so I do support the design as it stands	ensure there is seating and greenery and safe access for pedestrians	* General support for the proposal noted. * Narrow road and speed calming devices are included in the proposed road design to maintain low vehicle speeds.	N	2.D
56	Yes		Turning left from military road to get to Woolworths	Seating, Gardens, Greenery		I like the proposed option, the most important aspect is access to young st from military Rd, and also a garden and seating that will stay clean unlike the eye saw that was created and is currently there.	To be honest, there was nothing wrong with it before. Two way traffic and parking.	* Mixed opinions noted * Proposed direction of traffic enhances pedestrian safety and reduces rear-end collision risks on Military Road.	N	2.E
57	Part of it	Resting, Meeting up with others, Eating, Allowing the kids to play, Reading, Walking through		Seating	Road access	I am all for the proposal however we would much prefer cars being able to turn into young street from military road to increase number of people in and around small business rather than having an exit only out of young street.		* General support for the proposal noted. * Proposed direction of traffic enhances pedestrian safety and reduces rear-end collision risks on Military Road.	N	2.D 2.E
58	Yes	Meeting up with others, Eating, Allowing the kids to play, Walking through		Seating, Gardens, Greenery, Play zone, Cafe style seating, Communal seating		Looks great. Just do it stop asking the community to take some ownership and make the environment better. All its seems you doing is looking for excuses not to do it. There will always be people who cant stand change. Just ignore them before this turns into a swimming pool or cycle ramp debarcle	Just do it ASAP	* General support for the proposal noted. * Requests for prompt implementation	N	2.D

Submission	Do you support the proposed design for the plaza?	What are you most likely to use Young Street Plaza for?	What are you most likely to use Young Street Plaza for? (Other please specify)	What are the most important features Young St Plaza should have? (please specify)	Please provide your feedback on the proposed concept design option.	Additional comments/ Do you have any other suggestions about how Council can make this public space great?	Submission highlight and Council comments/ response	Recommend Plan to be amended Y or N	Reason
59	No	Allowing the kids to play, Walking through		Gardens, Greenery	The left hand turn only at Young St will create a bottleneck at Ben Boyd Rd south side. The council car park at the new current Woolworths is a popular traffic flow destination. Funnelling traffic into a right hand turn onto Military Rd to access this option to turn into the car parking will create a further line up where we already have an issue in Ben Boyd. The submitted drawing is also grossly misleading. If this is a safe place for children and teens and adults to meet and socialise it would greatly benefit the local community as there is nothing like this in the area considering we are living in a very population dense suburb. If cars were allowed through such as the lane way from Ben Boyd rd to Young St, then it would no longer be a safe area for children and teens to play and meet up.	Invite businesses or small pop ups into the surrounding shops that will liven the space	* Mixed opinions noted * Proposed direction of traffic enhances pedestrian safety and reduces rear-end collision risks on Military Road. * Opposition to Grosvenor Lane left turn only proposal - alternate routes via Grosvenor Street available to access Cooper Lane.	N	2.E
60	Part of it	Meeting up with others, Allowing the kids to play, Walking through		Seating, Gardens, Walkway, Play equipment, Shade /shelter, Greenery, Play zone, Cafe style seating, Communal seating		Providing all the options I ticked earlier in this survey would then help to make this space a great community asset for all to enjoy.	* Speed calming devices are included in the proposed road design to maintain low vehicle speeds. * Small walls and garden beds will act as buffers, separating the plaza from nearby traffic	N	2.B
61	No	Resting, Meeting up with others, Walking through		Seating, Walkway, Shade /shelter, Greenery, Play zone, Communal seating	I do not think that the one way traffic next to the intended plaza is acceptable as pedestrians will need to cross at the top of Young Street and the cars will be turning into Military Road (apart from the buses flying down Military Road will need to allow cars into Military Road) and pedestrians will then have to be very careful crossing at the top of Young Street. Also the proposed area is not what families want for children playing next to the proposed road. At present many families bring their children to play while parents relax and talk. We do not need the road to be reinstalled in any form for the top of Young Street.	traffic not to proceed at the upper end of Young St where the current Plaza is. The original plan for the plaza was acceptable to most residents.	* Opposition to road reopening * Road to be reopened due to existing Council resolution (Resolution 10.01 from 26 April 2022 Meeting https://www.northsydney.nsw.gov.au/ecm/download/document-9928007)	N	2.G

Submission	Do you support the proposed design for the plaza?	What are you most likely to use Young Street Plaza for?	What are you most likely to use Young Street Plaza for? (Other please specify))	What are the most important features Young St Plaza should have?	What are the most important features Young St Plaza should have? (please specify)	Please provide your feedback on the proposed concept design option.	Additional comments/ Do you have any other suggestions about how Council can make this public space great?	Submission highlight and Council comments/response	Recommended Plan to be amended Y or N	Reason
62	Yes	Resting, Meeting up with others, Eating, Allowing the kids to play, Walking through		Seating, Gardens, Walkway, Greenery, Cafe style seating, Communal seating		I like the design and think that providing clean and comfortable seating, some with tables is paramount. I would also suggest adequate lighting at night so it isn't a magnet for vandals. I would also like to see some sort of sound barrier to Military road to make it more amenable. I like the stepping stones in the photo so kids have something to do. Providing a space for workers to have lunch, people to meet and perhaps even blocking the road occasionally for small markets might be fun. Mostly, it must be attractive, not the unusable monstert that is currently there.	As long as there are flowers and greenery, adequate and attractive seating, people will use it. We sorely need any open space we can get. Perhaps small markets could be help occasionally like they do in Chatswood Plaza. They are very popular.	* General support for the proposal noted. * Design suggestions will be considered during the detailed design stage.	N	2.B 2.D
63	Part of it	Resting, Meeting up with others, Eating, Allowing the kids to play, Reading, Walking through		Seating , Gardens, Walkway, Play equipment, Shade /shelter, Greenery, Play zone, Cafe style seating, Communal seating		I would prefer if it stays as a pedestrian areas as it currently is. Both my kids have come daily to enjoy the plaza in the last 4 years and it has been a great space for us. If the proposed concept goes ahead, I would highlight the need to separate the road and the pedestrian area well to avoid confusion and accidents. Community has been used to have this area as a closed road for years, let's keep it like that!	Don't be afraid of change and pedestrian spaces. Be bold and innovative and don't always go for the easy solution (roads).	* General support for the proposal noted. * Opposition to road reopening * Road to be reopened to due to existing Council resolution (Resolution 10.01 from 26 April 2022 Meeting https://www.northsydney.nsw.gov.au/ecm/download/document-9928007) * Small walls and garden beds will act as buffers, separating the plaza from nearby traffic	N	2.B 2.D
64	Yes	Resting, Meeting up with others, Eating, Allowing the kids to play, Reading, Walking through		Seating , Gardens, Walkway, Play equipment, Play zone, Communal seating		Looks good	Have a shelter so it can be used in all seasons.	* General support for the proposal noted. * Design suggestions will be considered during the detailed design stage.	N	2.B 2.D
65	Yes	Eating		Gardens, Greenery		Road needs to be open on Young to feed onto Military Road.	Lush native greenery Very happy to see Young Street opening onto Military road turning left.	* General support for the proposal noted.	N	2.D

Submission	Do you support the proposed design for the plaza?	What are you most likely to use Young Street Plaza for?	What are you most likely to use Young Street Plaza for? (Other please specify)	What are the most important features Young St Plaza should have?	What are the most important features Young St Plaza should have? (please specify)	Please provide your feedback on the proposed concept design option.	Additional comments/ Do you have any other suggestions about how Council can make this public space great?	Submission highlight and Council comments/response	Recommended Plan to be amended Y or N	Reason
66	No	Resting, Meeting up with others, Eating, Allowing the kids to play, Walking through	Seating, Gardens, Walkway, Shade /shelter, Greenery, Play zone, Cafe style seating, Communal seating	I oppose the opening of the plaza to traffic/vehicles. I have travelled extensively to and lived overseas. Higher density which will occur needs more open space where pedestrians can relax, mingle and do so in complete safety without proximity of vehicles. There are sufficient access points for traffic to access Military Road in the direction of Cremorne/Mosman and beyond.	More green, some trees and cover and promotion of businesses that provide mingeling and community space.	* Support to the plaza/Opposition to road reopening * Road to be reopened due to existing Council resolution (Resolution 10.01 from 26 April 2022 Meeting https://www.northsydney.nsw.gov.au/ecom/download/document-9928007)	N	2.G		
67	No	Resting, Allowing the kids to play, Walking through	Gardens, Shade /shelter, Greenery, Communal seating	Cars and other vehicles should be permanently banned from that part of Young Street.	Invest enough to make it a green space that people want to visit.	* Opposition to road reopening * Road to be reopened due to existing Council resolution (Resolution 10.01 from 26 April 2022 Meeting https://www.northsydney.nsw.gov.au/ecom/download/document-9928007)	N	2.G		
68	Part of it	Resting, Allowing the kids to play, Walking through	Gardens, Greenery, Play zone, Cafe style seating	I think the upgrade to a permanent pedestrian plaza is long overdue and am also horrified that Young Street will be opened back up, more cars and roads is the last thing Neutral Bay community needs.	Get on with it and not open the road back up.	* Opposition to road reopening * Road to be reopened due to existing Council resolution (Resolution 10.01 from 26 April 2022 Meeting https://www.northsydney.nsw.gov.au/ecom/download/document-9928007)	N	2.G		
69	No	Walking through	Gardens, Walkway	I would prefer access be maintained from Military Rd into Young St. This closure has put a lot of pressure on Grosvenor Lane and Grosvenor Street. It's made them busy thoroughfares and they shouldn't be because that's where the cafes, restaurants, bars and residences are. There are no such establishments in this part of Young Street and therefore no real purpose to the plaza apart from being a nice area to walk through. The closure is solely for the purposes of Transport for NSW. Re the No Right Turn at the bottom of Grosvenor Lane: traffic can	* No support for the proposal noted * Proposed direction of traffic enhances pedestrian safety and reduces rear-end collision risks on Military Road.	N	2.G			

Submission	Do you support the proposed design for the plaza?	What are you most likely to use Young Street Plaza for?	What are you most likely to use Young Street Plaza for? (Other please specify)	What are the most important features Young St Plaza should have?	What are the most important features Young St Plaza should have? (please specify)	Please provide your feedback on the proposed concept design option.	Additional comments/ Do you have any other suggestions about how Council can make this public space great?	Submission highlight and Council comments/response	Recommended Plan to be amended Y or N	Reason
70	Part of it	Eating, Allowing the kids to play, Walking through		Seating, Walkway, Greenery, Play zone		I'm so disappointed that the proposal includes reopening for single lane traffic back through to Military Road. It will completely change the nature of how we enjoy the space with our children. Neutral Bay already preferences the needs of cars over pedestrians in so many places and there are very few spaces in and around the community shopping precinct that are relaxing when you have children under 10	A plaza space free of through traffic	* Opposition to road reopening * Road to be reopened due to existing Council resolution (Resolution 10.01 from 26 April 2022 Meeting https://www.northsydney.nsw.gov.au/ecm/download/document-9928007)	N	2.G
71	No	Meeting up with others, Allowing the kids to play		Gardens, Greenery, Play zone		The new design has very little for children and families. It also loses too much space due to the road - this will make the play area unfit for purpose. There is already far far too much unnecessary traffic on groslover lane and the north end of young street. There is a lot of foot traffic on that area and no reason for it to be a thoroughfare for cars. Cars should use groslover st, Ben Boyd and Waters road. The kids and I feel unsafe on Groslover lane due to the very high number of cars using it.	Use it solely as a green and kids area, don't compromise with a single lane as this makes it unfit for purpose. Still make groslover no right turn at its east end.	* Design suggestions will be considered during the detailed design stage. * Opposition to road reopening * Road to be reopened due to existing Council resolution (Resolution 10.01 from 26 April 2022 Meeting https://www.northsydney.nsw.gov.au/ecm/download/document-9928007)	N	2.B 2.G

Submission	Do you support the proposed design for the plaza?	What are you most likely to use Young Street Plaza for?	What are you most likely to use Young Street Plaza for? (Other please specify))	What are the most important features Young St Plaza should have?	What are the most important features Young St Plaza should have? (Other please specify))	Please provide your feedback on the proposed concept design option.	Additional comments/ Do you have any other suggestions about how Council can make this public space great?	Submission highlight and Council comments/response	Recommended Plan to be amended Y or N	Reason
72	Part of it	Allowing the kids to play, Walking through		Walkway, Shade /shelter, Play zone		I don't think communication to military road is required. Would create more traffic through.	Close the north entrance into Grosvenor lane from Ben Boyd.	* Opposition to road reopening * Road to be reopened due to existing Council resolution (Resolution 10.01 from 26 April 2022 Meeting https://www.northsydney.nsw.gov.au/ecm/download/document-9928007)	N	2.G
73	Part of it	Resting, Eating, Allowing the kids to play, Walking through		Seating, Gardens, Walkway, Shade /shelter, Greenery, Play zone, Communal seating		Do not allow vehicles in this area other than the access to the commercial and residents but should be closed to military road		* Opposition to road reopening * Road to be reopened due to existing Council resolution (Resolution 10.01 from 26 April 2022 Meeting https://www.northsydney.nsw.gov.au/ecm/download/document-9928007)	N	2.G
74	No	Resting, Reading, Walking through		Seating, Walkway, Greenery, Cafe style seating		Strongly opposed to reopening to cars.	noise barrier4 to dampen military road noise.	* Opposition to road reopening * Road to be reopened due to existing Council resolution (Resolution 10.01 from 26 April 2022 Meeting https://www.northsydney.nsw.gov.au/ecm/download/document-9928007) * Design suggestions will be considered during the detailed design stage.	N	2.G
75	Yes	Eating, Allowing the kids to play, Walking through		Gardens, Walkway, Play equipment, Shade /shelter, Greenery, Cafe style seating		I appreciate that the plan includes a one way feed onto Military Road, but would encourage you to take care that this shared zone prioritises pedestrians, and the comfort and safety of those using the new plaza. The car traffic should be a secondary priority, lest this simply become another congested route to Military Road.	Mixed use seating, shade, and terracing and landscaping to create a range of ways to engage with the space.	* General support for the proposal noted. * Shared zone on this section of road is deemed not appropriate as per TfNSW Technical directions for Shared Zones	N	2.D 2.G
76	Yes	Allowing the kids to play, Walking through		Gardens, Walkway, Play equipment, Shade /shelter, Greenery, Play zone, Communal seating		Be careful of children falling onto the road		* General support for the proposal noted. * Small walls and garden beds will act as buffers, separating the plaza from nearby traffic	N	2.B 2.D

Submission	Do you support the proposed design for the plaza?	What are you most likely to use Young Street Plaza for?	What are you most likely to use Young Street Plaza for? (Other please specify)	What are the most important features Young St Plaza should have?	What are the most important features Young St Plaza should have? (please specify)	Please provide your feedback on the proposed concept design option.	Additional comments/ Do you have any other suggestions about how Council can make this public space great?	Submission highlight and Council comments/response	Recommended Plan to be amended Y or N	Reason
77	Part of it	Meeting up with others, Eating, Allowing the kids to play, Walking through	What are you most likely to use Young Street Plaza for? (Other please specify)	What are the most important features Young St Plaza should have? Gardens, Walkway, Greenery, Play zone, Cafe style seating	What are the most important features Young St Plaza should have? Gardens, Walkway, Greenery, Play zone, Cafe style seating	Would be great to have a nicer permanent solution for this area but bringing cars back through this road is a terrible idea. Traffic has survived without this connection for the last 4 or so years, so why would you introduce it back in. The only way to make a safe space for people and kids to relax is to remove cars and the dangers that they bring to pedestrians. The design doesn't really work, trying to fit in both a street and play area. It will be too dangerous for kids to play, the street is unnecessary and in this scale the space is less usable/ functional as a small park/ playspace. The images focus on the road and a few trees without showing detail of the play and rest areas. From what is shown, it looks very traditional and not very imaginative, unlikely a space that will be used by kids as much as the current 'grass' hills.	Weather proof structures and no cars.	* Opposition to road reopening * Road to be reopened to due to existing Council resolution (Resolution 10.01 from 26 April 2022 Meeting https://www.northsydney.nsw.gov.au/ecm/download/document-9928007) * Design suggestions will be considered during the detailed design stage.	N	2.B 2.G
78	Part of it	Meeting up with others, Eating, Allowing the kids to play	What are you most likely to use Young Street Plaza for? (Other please specify)	What are the most important features Young St Plaza should have? Seating, Gardens, Play equipment, Shade /shelter, Greenery, Play zone, Communal seating	What are the most important features Young St Plaza should have? Seating, Gardens, Play equipment, Shade /shelter, Greenery, Play zone, Communal seating	Less focus on cars, more fun play space for kids - there is not much in the area. I live close by and my 2 kids like to play on the current temporary setup		* Opposition to road reopening * Road to be reopened to due to existing Council resolution (Resolution 10.01 from 26 April 2022 Meeting https://www.northsydney.nsw.gov.au/ecm/download/document-9928007) * Design suggestions will be considered during the detailed design stage.	N	2.B 2.G
79	Yes	Allowing the kids to play	What are you most likely to use Young Street Plaza for? (Other please specify)	What are the most important features Young St Plaza should have? Play equipment, Play zone	What are the most important features Young St Plaza should have? Play equipment, Play zone	Would love more safe areas for children to play		* General support for the proposal noted.	N	2.D
80	Part of it	Walking through	What are you most likely to use Young Street Plaza for? (Other please specify)	What are the most important features Young St Plaza should have? Walkway	What are the most important features Young St Plaza should have? Walkway	It's disgraceful that hundreds of thousands of ratepayer dollars have been wasted in the existing abomination, only to have the council propose to tear that all out and start again. The councillors and council bureaucrats responsible should have their pay docked for the next decade to help pay for this.	Place obstructions in the path of aggressive cyclists to slow them down. I have seen two elderly people knocked down by cyclists who fled the scene.	* Design suggestions will be considered during the detailed design stage.	N	2.B
81	No	Allowing the kids to play, Walking through	What are you most likely to use Young Street Plaza for? (Other please specify)	What are the most important features Young St Plaza should have? Seating, Walkway, Greenery, Play zone, Cafe style seating	What are the most important features Young St Plaza should have? Seating, Walkway, Greenery, Play zone, Cafe style seating	Closing Young Street made the area much more pedestrian friendly and user safe. Please keep it as a pedestrian area with NO through traffic to Military Road. By all means make it look a little more upmarket but	Green it up with better seating and make it a safe pedestrian area.	* Opposition to road reopening * Road to be reopened to due to existing Council resolution (Resolution 10.01 from 26 April 2022 Meeting https://www.northsydney.nsw.gov.au/ecm/download/document-9928007)	N	2.G

Submission	Do you support the proposed design for the plaza?	What are you most likely to use Young Street Plaza for?	What are you most likely to use Young Street Plaza for? (Other please specify)	What are the most important features Young St Plaza should have?	What are the most important features Young St Plaza should have? (please specify)	Please provide your feedback on the proposed concept design option.	Additional comments/ Do you have any other suggestions about how Council can make this public space great?	Submission highlight and Council comments/ response	Recommended Plan to be amended Y or N	Reason
82	No	Resting, Meeting up with others, Eating, Walking through		Seating, Gardens, Walkway, Shade /shelter, Greenery, Cafe style seating, Communal seating		please don't change what has been a winning formula. Please remove the car lane.	Remove the car line. I do not own a car, and I don't need more traffic in the area to make my walks more dangerous.	* Opposition to road reopening * Road to be reopened to due to existing Council resolution (Resolution 10.01 from 26 April 2022 Meeting https://www.northsydney.nsw.gov.au/ecm/download/document-9928007)	N	2.G
83	Yes	Resting, Meeting up with others, Allowing the kids to play, Walking through		Walkway, Shade /shelter, Greenery, Play zone, Cafe style seating, Communal seating		I support the concept design. While I would like to see the whole area allocated to a plaza I acknowledge the need for the one lane vehicle access. I support the vehicle exit to Military Road but I would not support vehicle entry from Military Road for safety reasons.	If a children's play area is incorporated then the inclusion of a gated area would provide a safer environment. An alternate option would be signage that children must be supervised by an adult. Deciduous trees be planted to maximise winter solar access.	* General support for the proposal noted.	N	2.D
84	No	Walking through		Walkway		Traffic: Young Street should not be re-opened for traffic to flow into Military Road — off maybe, but not onto. Left turn from Grosvenor Lane into Young Street very good idea.		* Opposition to road reopening * Road to be reopened to due to existing Council resolution (Resolution 10.01 from 26 April 2022 Meeting https://www.northsydney.nsw.gov.au/ecm/download/document-9928007)	N	2.G
85	Part of it	Eating, Allowing the kids to play, Walking through		Seating, Gardens, Walkway, Shade /shelter, Greenery, Play zone, Cafe style seating, Communal seating		Keep it a pedestrian area and don't let car back on to Young Street. Keeping it a pedestrian area is the best urban design outcome i.e. people greater than cars		* Opposition to road reopening * Road to be reopened to due to existing Council resolution (Resolution 10.01 from 26 April 2022 Meeting https://www.northsydney.nsw.gov.au/ecm/download/document-9928007)	N	2.G

Submission	Do you support the proposed design for the plaza?	What are you most likely to use Young Street Plaza for?	What are you most likely to use Young Street Plaza for? (Other please specify)	What are the most important features Young St Plaza should have?	What are the most important features Young St Plaza should have? (Other please specify)	Please provide your feedback on the proposed concept design option.	Additional comments/ Do you have any other suggestions about how Council can make this public space great?	Submission highlight and Council comments/response	Recommended Plan to be amended Y or N	Reason
86	Part of it	Resting, Allowing the kids to play, Walking through		Seating, Walkway, Play equipment, Shade /shelter, Play zone, Communal seating		Prefer the current design with no vehicle access. This creates a safe environment for young kids to play without worrying about cars. Great space to enjoy the sunshine or shade depending on time of year. It's a great public space for all to enjoy. Design needs to be very robust materials to last the timeframe. Current space with plywood seating is deteriorating. Tiered levels to adjust to the natural slope to be considered too. Space for more public seating would be great and a kids play area would be highly utilised and of benefit to local cafes and eateries	Per above. Kids place space. Robust materials. Not allowing cars. Grosvenor lane is a disaster to have pedestrians and cars sharing the same space. Cars are far to dominate people don't adhere to stop signs or speed limit. It's like walking on a road	* Opposition to road reopening * Road to be reopened due to existing Council resolution (Resolution 10.01 from 26 April 2022 Meeting https://www.northsydney.nsw.gov.au/ecom/download/document-9928007) * Small walls and garden beds will act as buffers, separating the plaza from nearby traffic * Design suggestions will be considered during the detailed design stage.	N	2.B 2.G
87	Yes	Meeting up with others, Eating, Walking through		Seating, Gardens, Walkway, Shade /shelter, Greenery, Play zone, Cafe style seating		Thanks for the opportunity for feedback. In my opinion, the current concept tries to squeeze too much into the space. The lounges (2) don't seem well located so close to Military Road. If these are to be included, they should ideally be in the point of maximum sunlight. The cafe (3) and communal seating areas (5) could be combined - particularly if the cafe doesn't work - as it hasn't in the temporary location. If the seating is nicely designed, comfortable and clean/maintained it will likely also get used by patrons of nearby F&B establishments. The plaza needs rubbish bins, which didn't seem to be in the concept plan. The plaza location can get windswept and quite dirty so this should be factored into the design/material/landscaping as should a regular cleaning and maintenance plan. Trees and landscaping are welcome inclusions. Solar access of this location isn't great		* Maintenance concerns will be addressed during the detailed design stage * Design suggestions will be considered during the detailed design stage. * Speed calming devices are included in the proposed road design to maintain low vehicle speeds.	N	2.B

Submission	Do you support the proposed design for the plaza?	What are you most likely to use Young Street Plaza for?	What are you most likely to use Young Street Plaza for? (Other (please specify))	What are the most important features Young St Plaza should have?	What are the most important features Young St Plaza should have? (please specify)	Please provide your feedback on the proposed concept design option.	Additional comments/ Do you have any other suggestions about how Council can make this public space great?	Submission highlight and Council comments/response	Recommended Plan to be amended Y or N	Reason	
88	Part of it	Resting, Eating, Walking through		Walkway, Greenery, Communal seating		<p>but in addition to the tree cover, the shading of some of the seated areas in the concept plan looks like a good inclusion for summer - if it is regularly cleaned and maintained.</p> <p>The lighting in this area is quite poor at night so it would be good to include light for aesthetics but also for security.</p> <p>The car lane should have speed controls/bumps. The exit from the car lane to Military Road should have both a STOP sign for vehicles as well as a marked pedestrian crossing.</p>			N	<p>* Support to the proposal noted</p> <p>* Speed calming devices and width of the road are included in the proposed road design to maintain low vehicle speeds.</p>	2.D 2.E
89	Part of it	I am unlikely to use the plaza		Seating, Gardens, Walkway, Shade /shelter, Greenery, Cafe style seating, Communal seating	Noise mitigation. Military Road traffic is a constant noise, so the more mitigation is installed, the more likely the use of the space will increase.	<p>I strongly approve of Young St being re-opened as they design indicates. However, I note that the displayed concept plans originally indicated a slightly wider roadway (WIDTH) being utilised (to assist the turning circle of nearby building parking exits) and several parking/loading spaces. These are shown in the attached concept artist impression from May 2024. I prefer the earlier design provided which showed a slight wider road and such parking/loading bays to assist the nearby businesses.</p> <p>The design suggests through traffic will be minimal due to speed limits and the traffic calming measures, as well as the difficulty turning left into Military Road eastbound, particularly during peak hour with the tidal flow in operation. Which begs the question, does it need to be reopened at all, apart from access to the driveway on the eastern side?</p>	<p>The temporary plaza polarised the community. Done well, and this design looks promising, subject to adding noise mitigation at the southern end, the plaza will add to the open space and amenity of the area. Occasional slow traffic would therefore be OK.</p>	<p>* Support to the proposal noted</p> <p>* Opposition to road reopening</p> <p>* Road to be reopened due to existing Council resolution (Resolution 10.01 from 26 April 2022 Meeting https://www.northsydney.nsw.gov.au/ecm/download/document-9928007)</p> <p>* Design suggestions will be considered during the detailed design stage.</p>	N	2.D 2.G	

Submission	90	Do you support the proposed design for the plaza?	Part of it	What are you most likely to use Young Street Plaza for?	Resting, Walking through	What are you most likely to use Young Street Plaza for? (Other (please specify))		What are the most important features Young St Plaza should have?	Gardens, Walkway, Shade /shelter, Play zone, Communal seating	What are the most important features Young St Plaza should have? (Other (please specify))		Please provide your feedback on the proposed concept design option.	I would rather not have the plaza open to cars, it should be a safe area to sit play and enjoy the space	Additional comments/ Do you have any other suggestions about how Council can make this public space great?	Do not allow the roadway to be built, keep it closed	Submission highlight and Council comments/response	* Opposition to road reopening * Road to be reopened to due to existing Council resolution (Resolution 10.01 from 26 April 2022 Meeting https://www.northsydney.nsw.gov.au/ecm/download/document-9928007)	Recommended Plan to be amended Y or N	N	Reason	2.G
------------	----	---	------------	---	--------------------------	--	--	--	---	---	--	---	--	---	--	--	--	---------------------------------------	---	--------	-----

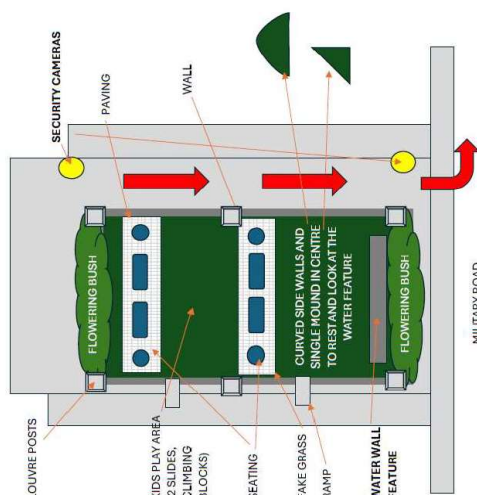
Young Street Plaza Upgrade – Neutral Bay Free form submissions received during public exhibition period.

Prepared August 2024

The following criteria are used to analyse all submissions received, and to determine whether or not the proposed concept design would be amended:

1. The concept design **would be** amended if the point:
 - a. provided additional information of relevance.
 - b. indicated or clarified a change in government legislation, Council's commitment, or management policy.
 - c. proposed strategies that would better achieve or assist with Council's objectives.
 - d. was an alternate viewpoint received on the topic and is considered a better option than that proposed in the Draft Plan/Policy or;
 - e. indicated omissions, inaccuracies or a lack of clarity.

2. The concept design **would not be** amended if the point:
 - a. addressed issues beyond the scope of the Plan/Policy.
 - b. was already in the plan/policy or will be considered during the development of a subordinate plan/procedure (prepared by Council).
 - c. offered an open statement, or no change was sought.
 - d. clearly supported the draft proposals.
 - e. was an alternate viewpoint received on the topic, but the recommendation of the draft plan was still considered the best option.
 - f. was based on incorrect information.
 - g. contributed options that are not possible (generally due to some aspect of existing legislation or government policy) or; involved details that are not appropriate or necessary for inclusion in a document aimed at providing a strategic community direction over the long term.

Submitter	Submission	Summary	Council's comments/response	Reason
<p>Submitter Name withheld</p>	<p>Dear Mayor,</p> <p>The proposed Young street plaza design is boring and unviable you cannot have that open plan seating and eating areas with plane trees, 2 options 1. chop them down or 2 a louvred roof over the area and then it can also be used rain or shine and when the plane trees drop their toxin vocs they will fall to the side for easy clean up! Otherwise, it is one big waste of money. The design is also boring we need to attract tourists to the area we need it to stand out! Seriously did anyone really think about this properly?!</p> <p>Please see my draft below:</p> <ol style="list-style-type: none"> 1. YOUNG STREET GREEN AREA ELEVATED TO KERB LEVEL TO PREVENT FLOODING 2. LOUVRED COVER REQUIRED 100% SO SPACE CAN BE USE WHEN WET AND WHEN PLANE TREES POLLUTE THE AIR WITH VOC TOXINS. 3. GOOD QUALITY SYNTHETIC GRASS IS FINE FOR CHILDREN THE AREA IS ALSO VERY SHELTERED IT WON'T GET HOT. 4. WALL WATER FEATURE!!! LIGHTS FOR THE WATER FEATURE! BLOCKS OUT MILITARY RD! 5. SECURITY CAMERAS WITH BIG SPOT LIGHTS ON LAMP POSTS AND SPEAKERS WITH NATURE SOUNDS CREATE TRANQUILITY, CREATE AN OASIS! 6. 2 ENTRY POINTS DISABLE ONLY TO PREVENT BIKES 	<p>The proposed Young Street plaza design has been deemed boring and unviable. The open plan seating and eating areas with Plane trees are impractical, requiring either tree removal or a louvred roof to ensure usability in all weather and facilitate clean-up of plane trees' toxic VOCs. Without these changes, the project risks being a waste of money.</p> <p>The design needs to be more attractive to tourists. Suggestions include elevating the green area to kerb level to prevent flooding, installing a louvred cover, using good quality synthetic grass for children's play areas, adding a wall water feature with lights to block Military Road noise, and enhancing security with cameras, spotlights, and speakers with nature sounds. Additionally, entry points should be restricted to disabled access only to prevent bike entry. Suggested layout attached</p>	<p>* Design suggestions will be considered during the detailed design stage.</p>	<p>2.B 2.E</p>
<p>Submitter Name withheld</p>	<p>My feedback on the current proposal for Young Street Plaza Upgrade is as follows: a. I support the proposition that Young Street be reopened to allow traffic to flow onto Military Road. I would also recommend that you ban the very large diesel trucks that</p>	<p>The feedback on the Young Street Plaza Upgrade proposal includes the following points: the reopening of Young Street to allow traffic flow onto Military Road is supported, with a recommendation to ban large diesel</p>	<p>* Support for the road reopening * Additional comments and suggestions made to traffic management.</p>	<p>2.B</p>

Submitter	Submission	Summary	Council's comments/response	Recommended Plan to be amended Y or N	Reason
	<p>Woolworth currently use. Their size and diesel fumes are not conducive to alfresco living and cyclists. Alternatives do exist.</p> <p>b. I believe the traffic driving down Grosvenor Lane should be allowed to turn left or right into Young Street. The reason for my belief that traffic from Grosvenor Lane should be allowed to turn left or right is that a number of key planning issues are still being discussed. In particular, whether parking would be partially allowed in the square to support the ten shops and whether the Coles redevelopment plan for the largest supermarket in Australia and an eight-story residential block of units will be allowed. My concern is the over-development of the area between Grosvenor Street and Square including Grosvenor Lane. I recently undertook four traffic surveys of traffic coming out of Grosvenor Lane into Young Street (I recommend a more detailed survey be undertaken). My results showed traffic flows similar to Grosvenor Street with 80 % turning right to go into the square to use the ten shops and cafes located there. Already, at times traffic congestion in Grosvenor Street is high. Traffic can be backed up from Ben Boyd Road to the Roundabout in Grosvenor Street and the time taken to enter Military Road can be 20 minutes. Diverting all Grosvenor Lane traffic that is not looking to exit the village into Military Road will significantly increase the traffic on Grosvenor Street.</p> <p>Until the final details of the Coles redevelopment are known the amount of underground parking can not be finalized. However, Coles estimates that it will have 200 employees and let's calculate that 100 of them will need parking, Coles customers could need another 100 bays of parking. In addition, another 100 bays would be needed for the replacement of the current parking bays in the square. In addition to these 300 bays would be another 80-100 based on the number of units built. This is, in my opinion, a complete overdevelopment of Grosvenor Street which has 2 lanes and would likely have traffic from four levels of parking to deal with which is likely to cause significant congestion between 7 am and 9 pm most days.</p> <p>I would strongly suggest traffic from Grosvenor Lane into Young Street should be able to turn left or right at least until future traffic flows and plans are finalized. This will keep the shops in the square viable and provide the current traffic flow through the square to Walters Road which would help minimize traffic in Grosvenor Street.</p>	<p>trucks used by Woolworths due to their impact on alfresco living and cyclists.</p> <p>It is suggested that traffic from Grosvenor Lane be permitted to turn left or right into Young Street, considering ongoing discussions about key planning issues, such as partial parking to support ten shops and the Coles redevelopment plan.</p> <p>Concerns about over-development between Grosvenor Street and Square, including Grosvenor Lane, are noted. Traffic surveys show significant flow similar to Grosvenor Street, with 80% turning right into the square.</p> <p>Existing congestion issues on Grosvenor Street are highlighted, where traffic can back up from Ben Boyd Road to the Roundabout, taking up to 20 minutes to enter Military Road. Diverting all Grosvenor Lane traffic to Military Road could worsen congestion.</p> <p>Until final details of the Coles redevelopment and its underground parking are known, it is estimated that 300-400 parking bays will be needed, raising concerns about over-development and traffic congestion from four levels of parking.</p> <p>It is suggested that traffic from Grosvenor Lane into Young Street be allowed to turn left or right until future traffic flows and plans are finalised, to maintain the viability of shops in the square and minimise traffic in Grosvenor Street.</p>	<p>* Opposition to the proposed Grosvenor lane safety improvements.</p>	N	2.A
Submitter Name withheld	<p>I thought I spoke to you a few weeks ago about providing Commercial Properties facing Young Street with a facility to leave their Garbage Bins. I thought you indicated that you would take my suggestion "On Board". I like what is being proposed for the upgrade as it is an eyesore now.</p> <p>My suggestion was to make provision for Commercial Bins Bin to have an enclosed structure which is the case in some Strata Properties (maybe between the trees) in the proposed plans, so they don't become an eyesore or designated areas on both footpaths.</p> <p>Attached is a photo I took some time ago about this issue that I thought I mentioned in our telephone conversation. Could you advise what is the currently proposal to deal the Garbage Bin issue?</p>	<p>Request for the provision of a facility for Commercial Properties facing Young Street to leave their garbage bins. It was understood that the suggestion would be taken "on board." The proposed upgrade is appreciated as the current state is an eyesore.</p> <p>The suggestion was to provide an enclosed structure for commercial bins, similar to those in some strata properties, possibly located between the trees in the proposed plans, or designated areas on both footpaths to avoid becoming an eyesore.</p>	<p>* Suggestion outside the scope of works, commercial bins are to be stored in private properties. This issue will be referred to Compliance.</p>	N	Attachment 10.13.4

Submitter	Submission	Summary	Council's comments/response	Recommended Plan to be amended Y or N	Reason
<p>Submitter Name withheld</p>	<p>Dear Sir/Madam, I write in relation to the Young Street Plaza redevelopment. I am generally supportive of the proposal, however, I believe that, as a general principal, the numerous low height walls separating the various areas of the plaza should be reduced if not eliminated. I understand that these have been included to delineate the various areas within the plaza and also as a device to accommodate and transition the various levels. However, these walls (even though low-height) create visual and physical barriers to the overall plaza. It would be better, in my view, to accommodate the transition between the various levels via bermed / mounded / sloping landscaped areas wherever possible. This would increase the soft landscaping, reduce the numerous low-height retaining walls which unnecessarily break-up the overall plaza area and make the plaza more connected and inviting place without losing the identity of the various recreational areas. Eliminating many of the walls would also have the benefit of reducing the construction cost of the redevelopment. The one exception would be the wall flanking Military Road – recognising that sight lines need to be preserved to Military Rd, this wall should be increased in height (along with mounded landscaping) to create a more effective noise and visual barrier to Military Rd – as this presents the greatest challenge to the success of the plaza as an e active 'people place'. If the plaza is excessively noisy and Military Rd visually dominates the plaza it will not attract people. "Young Street Plaza upgrade - I agree with what Council has plans for this plaza."</p>	<p>The proposal is generally supported, but it is believed that the numerous low-height walls separating areas of the plaza should be reduced or eliminated. These walls create visual and physical barriers, despite their purpose of delineating areas and accommodating level transitions. It is suggested that bermed, mounded, or sloping landscaped areas be used instead, increasing soft landscaping and making the plaza more connected and inviting. This would also reduce construction costs. An exception is the wall flanking Military Road, which should be increased in height to create an effective noise and visual barrier, ensuring the plaza remains a welcoming 'people place' without being dominated by Military Road's noise and sightlines.</p>	<p>* General support for the proposal noted. * Small walls and garden beds will act as buffers, separating the plaza from nearby traffic. * Design suggestions will be considered during the detailed design stage.</p>	<p>N</p>	<p>2.B 2.D</p>
<p>Name withheld</p>	<p>Please keep young Street as is. Children can play safely; people stroll knowing no cars will put them at risk. If you open access to cars next to children's play area, where is the safety in that.</p>		<p>* Road to be reopened to due to existing Council resolution (Resolution 10.01 from 26 April 2022 Meeting https://www.northsydney.nsw.gov.au/ecm/download/document-9928007)</p>	<p>N</p>	<p>2.G</p>
<p>SoCal - AppleJack</p>	<p>Good afternoon, I am writing on behalf of SoCal, Neutral Bay to express our strong support for the proposed Young Street Plaza Upgrade. As a local business deeply invested in the community, we believe that this upgrade is not only necessary but crucial for the revitalization of our area. The road closure has undeniably added to the challenges faced by the hospitality industry, exacerbating the struggles that many businesses like ours are already contending with. The current state of the facilities in the area is a reflection of neglect, and it has become increasingly clear that action is needed to breathe new life into Young Street. Since 2020, we have been actively engaged in communication with the local council, advocating for changes that will not only improve the infrastructure but also attract foot traffic to the area. We firmly believe that a vibrant and inviting Young Street Plaza will benefit all businesses along this thoroughfare. By investing in the upgrade of Young Street Plaza, we have an opportunity to create a more welcoming and dynamic environment for locals and visitors alike. A revitalized plaza</p>	<p>Strong support for the proposed Young Street Plaza Upgrade has been expressed on behalf of SoCal, Neutral Bay. As a local business, it is believed that this upgrade is crucial for revitalising the area. The road closure has added to the hospitality industry's challenges, reflecting neglect and necessitating action to rejuvenate Young Street. Since 2020, there has been active engagement with the local council to advocate for changes that improve infrastructure and attract foot traffic. A vibrant Young Street Plaza is seen as beneficial for all businesses along this thoroughfare. The upgrade is expected to create a more welcoming environment, enhance the area's appeal, and foster economic growth and community spirit. It should also alleviate some hardships faced by the hospitality industry, providing a much-needed boost to recovering businesses. In conclusion, the Young Street Plaza Upgrade is urged to be prioritised as a crucial step towards the neighbourhood's rejuvenation. Support and</p>	<p>* General support for the proposal noted.</p>	<p>N</p>	<p>2.D</p>

Submitter	Submission	Summary	Council's comments/response	Recommended Plan to be amended Y or N	Reason
	<p>will not only enhance the aesthetic appeal of the area but also serve as a catalyst for economic growth, fostering a sense of community and camaraderie among residents and business owners.</p> <p>Furthermore, we are confident that the proposed upgrade will help alleviate some of the hardships faced by the hospitality industry, providing a much-needed boost to businesses struggling to recover from the impacts of recent events.</p> <p>In conclusion, we urge you to prioritize the Young Street Plaza Upgrade as a crucial step towards the rejuvenation of our neighbourhood. We stand ready to support and collaborate with the council in any way possible to ensure the success of this endeavour.</p> <p>Thank you for considering our input and for your dedication to the betterment of our community.</p>	<p>collaboration with the council are offered to ensure the success of this endeavour.</p>			
Name withheld	<p>I want to comment on the proposed upgrade. I think the Young Street Plaza, as initially implemented, was an eyesore; a waste of resources and money.</p> <p>The proposal to have traffic turn left from Young Street into Military Road makes no sense. Traffic thus entering Military Road will confront buses stopping at the bus stop some 20 or so metres forward. The temptation will be to reach the outer lane, thereby heightening the risk of accidents.</p> <p>It will also entrench the current traffic pattern whereby large trucks involved with construction are compelled to use, an already congested, Grosvenor Street.</p> <p>I think it would make more sense to have traffic turning left from Military Road into Young Street.</p>	<p>The proposed upgrade has been noted. The Young Street Plaza, as initially implemented, is considered an eyesore and a waste of resources. The proposal for traffic to turn left from Young Street into Military Road is seen as illogical, as it would confront buses stopping ahead and increase accident risks. It would also force construction trucks to use the congested Grosvenor Street. It is suggested that traffic turn left from Military Road into Young Street instead. Appreciation is expressed for the opportunity to provide feedback.</p>	<p>* Proposed direction of traffic enhances pedestrian safety and reduces rear-end collision risks on Military Road.</p>	N	2.E
Name withheld	<p>Thank you for giving me the opportunity to respond.</p>			N	2.B
Name withheld	<p>Has the swept turn path for the LEFT TURN into Grosvenor Lane for 19m semi-trailers delivering to Woolworths been checked?</p>			N	2.A
Name withheld	<p>Called to complain about the parking in The Coles development and how the effect of the construction will affect the business and property owners.</p>			N	2.C
Neutral Precinct 10 Attendees 14 May 2023 Extract from the meeting 4 minutes	<p>The property owner on Young Street called to request more information about the project's timeline. The Council's project manager explained the details and provided a high-level overview of the schedule.</p> <p>Attendees at the Precinct meeting were given the background to the Young Street plaza and were shown the proposed plan for the plaza. The new plans propose to open Young Street to enable cars turning left onto Military Road.</p> <p>After some discussion, including the discussion from residents that Neutral Bay has very little green space and therefore a plaza is a welcome addition to the area, however, the residents expressed concerns about reopening the road to traffic as this would diminish the purpose of the plaza and some concerns were expressed regarding pedestrian safety utilizing the plaza.</p> <p>It was decided to submit the following motion to Council as feedback on the proposed</p>		<p>* Design suggestions will be considered during the detailed design stage.</p> <p>* Comments are outside the scope of this proposal.</p>	N	2.G

Submitter	Submission	Summary	Council's comments/response	Recommended Plan to be amended Y or N	Reason
	<p>upgrade:</p> <p>Motion: Residents are in total support for the Young Street Plaza. We are however, not in support of reopening Young Street to cars turning left onto Military Road.</p> <p>The motion was carried unanimously.</p> <p>Young St Plaza Proposal and Grosvenor Lane</p> <p>Following discussion, the following motions was proposed by GD:</p> <p>I. Parks Precinct supports the proposed upgrade of Young St Plaza on the basis that the left turn only between Grosvenor Lane and Young St is maintained in the proposal and enforced to the extent that physical barriers such as bollards are installed to prevent any circumvention of the Left turn only.</p> <p>The motion was seconded by ES and carried unanimously.</p> <p>II. Parks Precinct urge the North Sydney Council to use funds allocated to the Young St Plaza upgrade to modify the Grosvenor Lane pedestrian shared zone to minimise the comingling of pedestrians and vehicles. For the avoidance of doubt this means:</p> <p>a. removing the choke points that funnel pedestrians into the path of vehicles</p> <p>b. Redesigning the lane to ensure it is both wheelchair and pram accessible</p> <p>c. Installing a pedestrian crosswalk on the footpath at the intersection of Young St and Grosvenor Lane.</p> <p>The motion was seconded by ES and carried unanimously.</p> <p>Chair will note Precinct comments on Your Say.</p> <p>Residents are encouraged to comment individually. The proposal is open for comment on the North Sydney Council website until 12th June (https://yoursay.northsydney.nsw.gov.au/young-st-plaza-upgrade/surveys/young-street-plaza-upgrades).</p>	<p>* Small walls and garden beds will act as buffers, separating the plaza from nearby traffic</p> <p>* General support for the proposal noted.</p> <p>* Support for the proposed safety improvement for Grosvenor Lane</p> <p>* Design suggestions will be considered during the detailed design stage.</p>	N	2.B 2.D	
<p>Brightmore Precinct 10 Attendees 15 May 2014</p> <p>Extract from the meeting minutes</p>	<p>Precinct viewed and discussed the plans on exhibition. It was noted the kerb was to be redesigned to direct traffic to turn left into Young Street from Grosvenor Lane. One Precinct member was concerned this would direct traffic onto Grosvenor Street, but other Precinct members supported this change. Cr Spenceley advised TfNSW would not support fully reopening Young Street or allowing vehicles to turn left off Military Road into Young Street as this would slow the B-Line bus service. Precinct agreed to take two straw polls, the first including the option of fully reopening Young Street so that Precinct members could express their preference for this, and the second excluding that option on the basis that it would not be possible. In each poll there were two abstentions.</p> <p>Straw Poll 1</p> <ul style="list-style-type: none"> • Full reopening of Young St: 5 votes • One lane traffic as per exhibited plan: 5 votes 	<p>*Mixed opinions noted</p> <p>* Speed calming devices are included in the proposed road design to maintain low vehicle speeds.</p> <p>* Road to be reopened to due to existing Council resolution (Resolution 10.01 from 26 April 2022 Meeting https://www.northsydney.nsw.gov.au/ecm/download/document-9928007)</p>	N	2.C	

Submitter		Submission		Summary		Council's comments/response		Recommended Plan to be amended Y or N		Reason
		<ul style="list-style-type: none"> Fully closed, plaza only 	7 votes							
		<p>Straw Poll 2</p> <ul style="list-style-type: none"> One lane traffic as per exhibited plan: Fully closed, plaza only 	9 votes 8 votes							